



U.S. DEPARTMENT OF
ENERGY



WIPP Status and Plans - 2010

*National Transportation Stakeholders Forum
Chicago, Illinois*

May 26, 2010

Dr. Dave Moody
Manager
Carlsbad Field Office



EM Environmental Management
safety ♦ performance ♦ cleanup ♦ closure

www.em.doe.gov

Transportation Success



“...The [WIPP transportation] system is safer than that employed for any other hazardous material in the U.S....”

*National Academy of Sciences,
WIPP Panel*

- First shipment to WIPP departed Los Alamos National Laboratory on March 25, 1999
- WIPP honored with U.S. Transport Council award for transportation safety in January 2009
- More than 8,500 shipments have arrived safely
- Surpassed 10 million loaded miles to WIPP
- Many others



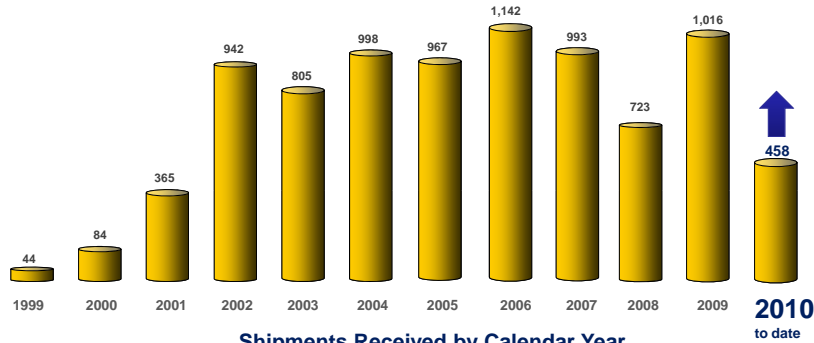
EM Environmental Management
safety ♦ performance ♦ cleanup ♦ closure

www.em.doe.gov

2

Shipments Received

Since Opening:
 Total shipments: 8,537
 Loaded miles traveled: 10,179,007



Shipments Received by Calendar Year

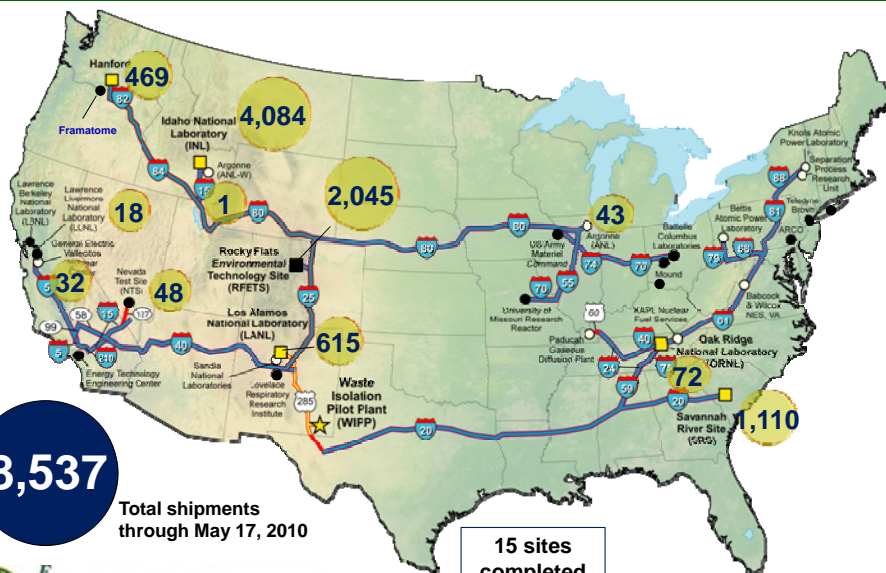
As of 5-17-10



www.em.doe.gov

3

Shipping Totals by Site



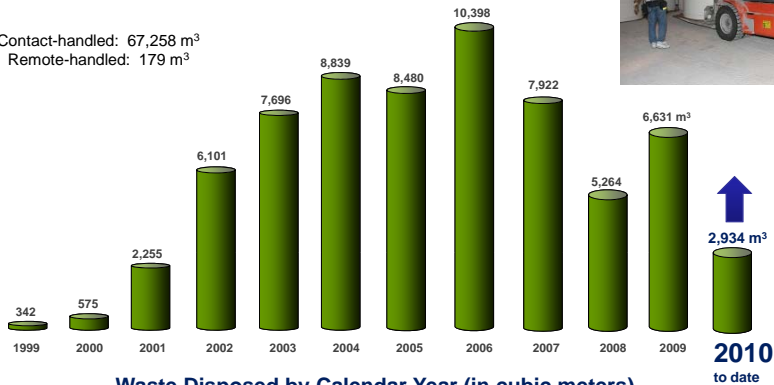
www.em.doe.gov

4

Disposal

Volume of waste disposed at WIPP to date:
67,437 m³

Contact-handled: 67,258 m³
Remote-handled: 179 m³



Waste Disposed by Calendar Year (in cubic meters)

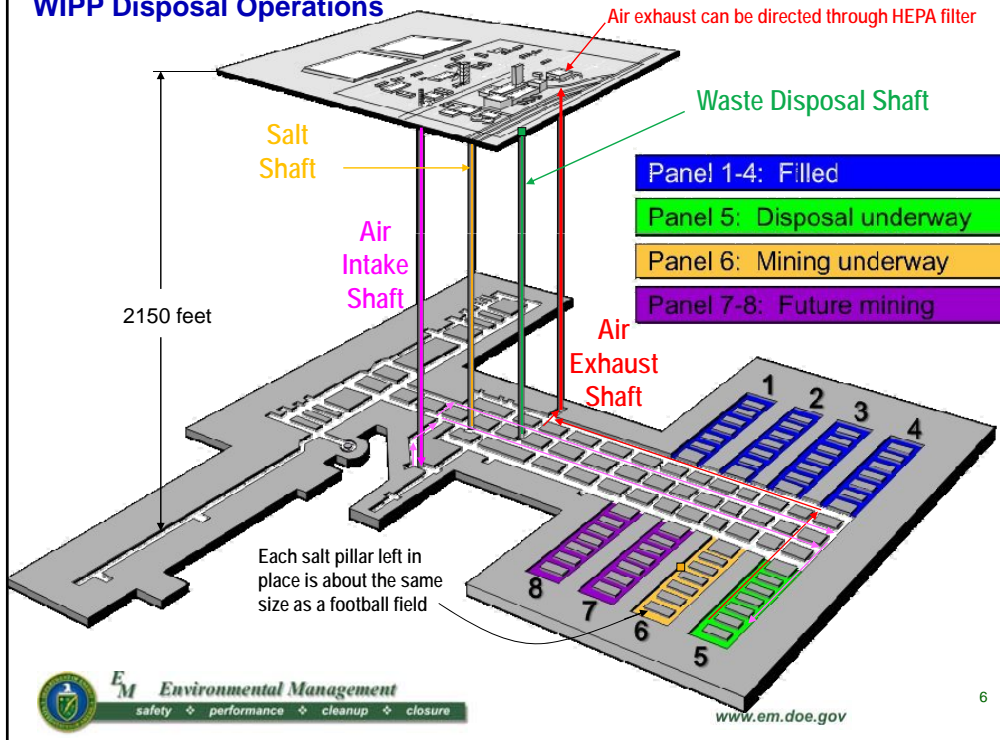
As of May 17, 2010



www.em.doe.gov

5

WIPP Disposal Operations

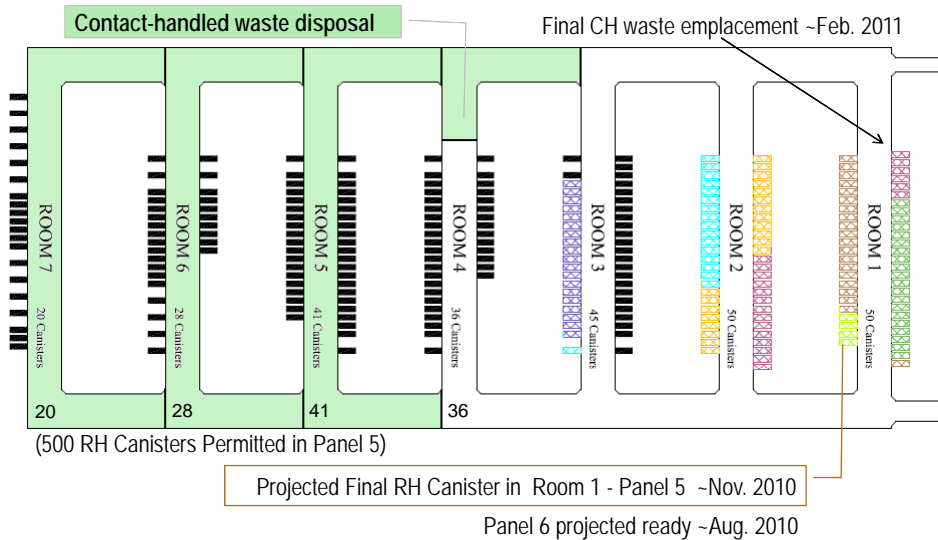


www.em.doe.gov

6

Panel 5 Disposal Status

As of May 1, 2010



www.em.doe.gov

7

Key Regulatory Activities



- Compliance Recertification Application (CRA)
 - Required every five years until closure (March 26, 1999)
 - CRA documents continued compliance with long-term disposal regulations
 - EPA to announce Completeness Determination June 2010
 - Re-certification approval expected ~Dec. 2010
- Hazardous Waste Facility Permit Renewal Application
 - Ten-year permit issued in October 1999
 - NMED issued draft permit April 27, 2010
 - Public comment period through June, 2010
 - Hearings ~August
 - New Permit approval expected ~Dec. 2010



www.em.doe.gov

8

WIPP drivers meet strict requirements



After hiring, WIPP drivers go through rigorous training before being allowed to transport waste to WIPP.

Sample hiring qualifications and requirements

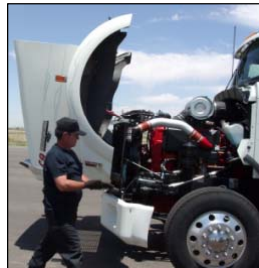
- Meet or exceed federal requirements
- Minimum 325,000 miles in semi-tractor trailer combination within the last five years or 100,000 miles per year in two of the last five years
- Excellent safety record (even in personal vehicles)
- Must pass background check for security



www.em.doe.gov

9

Commercial Vehicle Safety Alliance Level VI Inspection at Point of Origin (2-3 hours)



Drivers inspect rigs and loads every 3 hours or 150 miles. Some states require added inspections at their ports of entry.



www.em.doe.gov

10

Commercial Vehicle Safety Alliance Level VI Inspection Protocol



- Coupling devices
- Exhaust system
- Brake system
- Fuel system
- Suspension
- Tires/wheels/rims/hubs
- Lighting: headlamps, tail, brake, running, instrument, turn signals
- Trailer interconnection systems
- Windshield and wipers
- Emergency equipment
- Cargo securement
- Electrical system
- Frames/supports
- Steering linkage

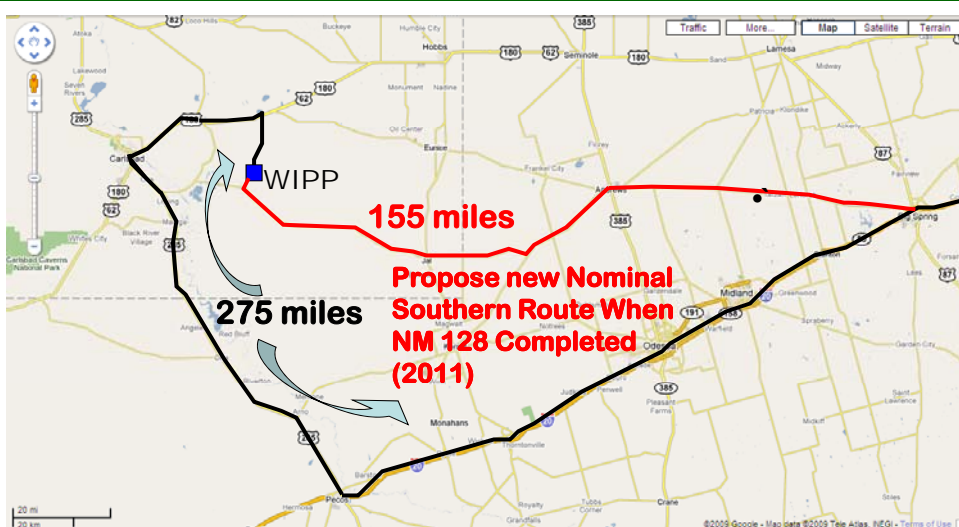


EM Environmental Management
safety ♦ performance ♦ cleanup ♦ closure

11

www.em.doe.gov

Potential New Southern Access Route



EM Environmental Management
safety ♦ performance ♦ cleanup ♦ closure

12

www.em.doe.gov

Upcoming Developments



TRUPACT-III
(for large boxes)

Standard Large Box - 2 (SLB-2)

Application submitted
Jan. 2010

NRC approval anticipated
Fall 2010

Permit and EPA approval still to come



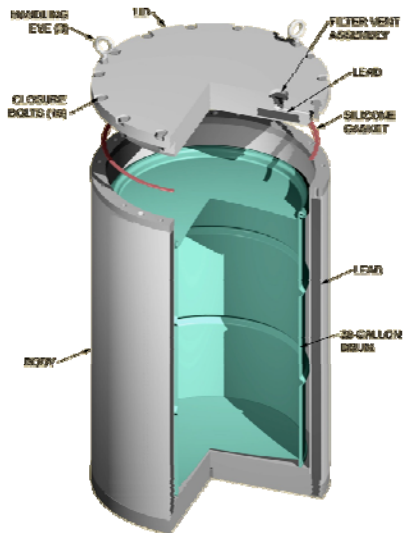
EM Environmental Management
safety ♦ performance ♦ cleanup ♦ closure

13

www.em.doe.gov

Shielded Containers

(Shipping RH waste in CH shipping containers)



VS.



EM Environmental Management
safety ♦ performance ♦ cleanup ♦ closure

14

www.em.doe.gov

Gamma Shielded Containers

- DOT-7A certified
- NRC license for shipping in HalfPACT issued March 2009
- ~1/3 fewer shipments than RH-72B for equivalent volume
- Much more operational flexibility when handled as CH



EM Environmental Management
safety ♦ performance ♦ cleanup ♦ closure

15

www.em.doe.gov

Shipping Status at Generator Sites



Idaho National Laboratory

- INL continues shipping with two certified programs:
 - AMWTP (CH only) and,
 - CCP (CH+RH supporting both ICP & AMWTP)



Los Alamos National Laboratory

- CCP support continues to characterize and certify CH+RH for as needed to support Area G cleanup



EM Environmental Management
safety ♦ performance ♦ cleanup ♦ closure

www.em.doe.gov

Shipping Status at Generator Sites *(continued)*



12,500 m³ emplaced
in WIPP

~5,200 m³ remains

Savannah River Site

- Continued deployment of CCP through FY12
- Majority of 5,200 m³ to be re-packaged into 55-gallon drums and SWBs
 - Shipment to WIPP over the next two years
- SRS to repackage large container into SWBs
 - SWB currently approved payload container for shipment in the TRUPACT-II
- Small part of inventory to be packaged into SLB-2 containers due to size reduction issues
 - May eventually be shipped from SRS in the TRPACT-III, once licensed



EM Environmental Management
safety ♦ performance ♦ cleanup ♦ closure

www.em.doe.gov

Shipping Status at Generator Sites *(continued)*



Oak Ridge National Laboratory

- TRU waste processing facility (TWPF) will continue to package both CH and RH
- CCP will continue to conduct characterization, certification, and mobile loading operations for the foreseeable future



Hanford

- CCP deployed to Hanford in 2010
- Initial goal to characterize & certify ~1000 existing over-packed drums (85-gallon)
- Shipment to INL for treatment & CCP certification (at INL) for disposal at WIPP
- FY11 - CCP at Hanford to support direct shipment of both CH and RH
- Dependent on funding



EM Environmental Management
safety ♦ performance ♦ cleanup ♦ closure

www.em.doe.gov

Questions & Answers



WIPP pilots safe and environmentally responsible waste management and energy solutions.