

# **NAVAL SPENT FUEL RAIL SHIPMENT ACCIDENT EXERCISE OBJECTIVES**

- **Familiarize stakeholders with the Naval spent fuel shipping container characteristics and shipping practices**
- **Gain understanding of how the NNPP escorts who accompany the spent fuel shipments will interact with civilian emergency services representatives**
- **Allow civilian emergency services agencies the opportunity to evaluate their response to a simulated accident**
- **Gain understanding of how the communications links that would be activated in an accident involving a Naval spent fuel shipment would work**

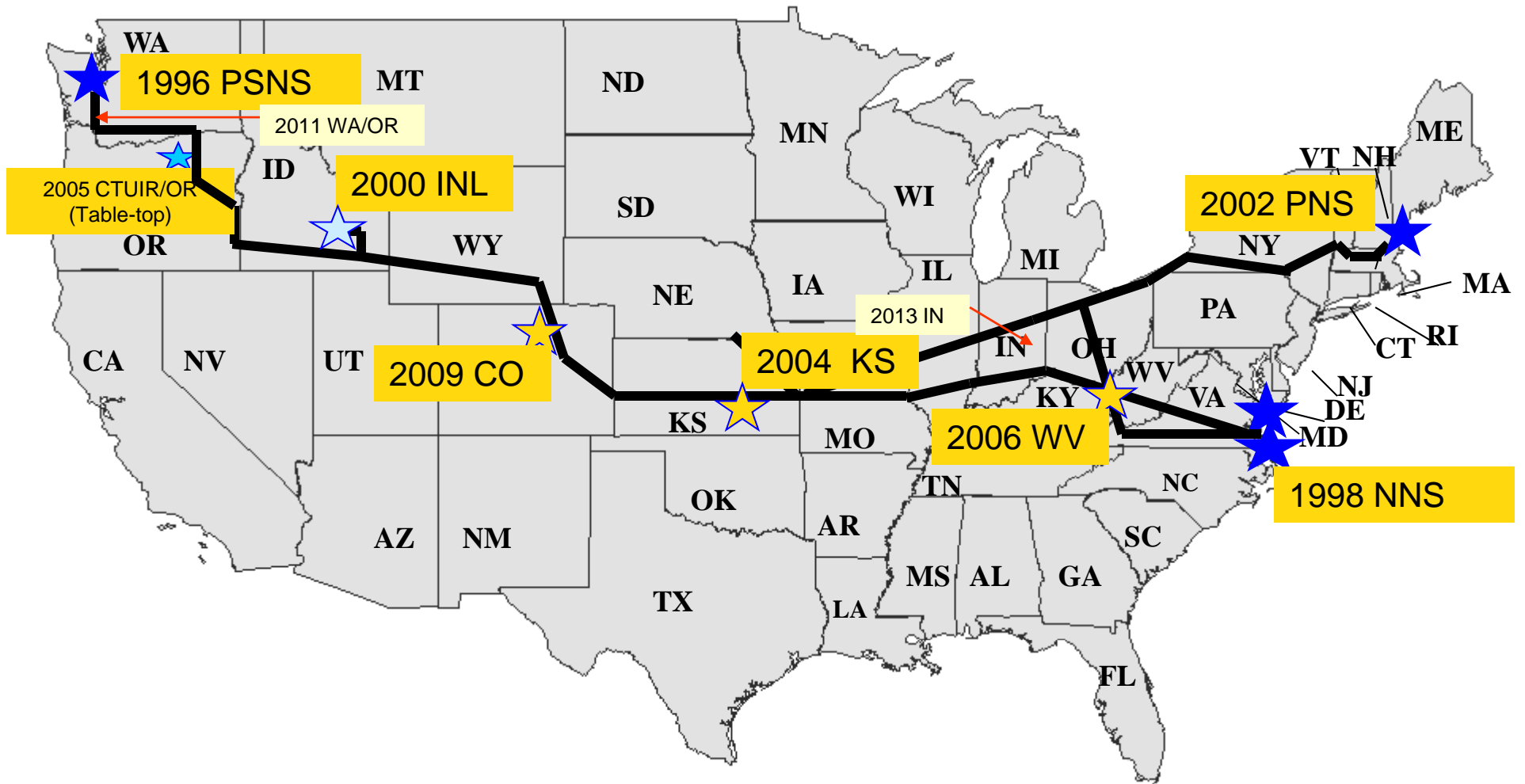
## ACCIDENT EXERCISE TYPICAL TIMELINE

- ***Conceptual/Organizational Meeting – April 6***
  - *Emergency Response Triad commitment to proceed*
- ***Detailed Planning Meeting – May 11***
  - *Scenario / Participating organizations*
- ***Table Top Meeting – July 12***
  - *Refine scenario / Role play*
- ***Comm link verification – August 2***
  - *Got all the right numbers?*
- ***Exercise/Dry Run – September 21***
  - *Participants only dress rehearsal*
- ***Exercise Demonstration – October 12***
  - *Observers from throughout region*

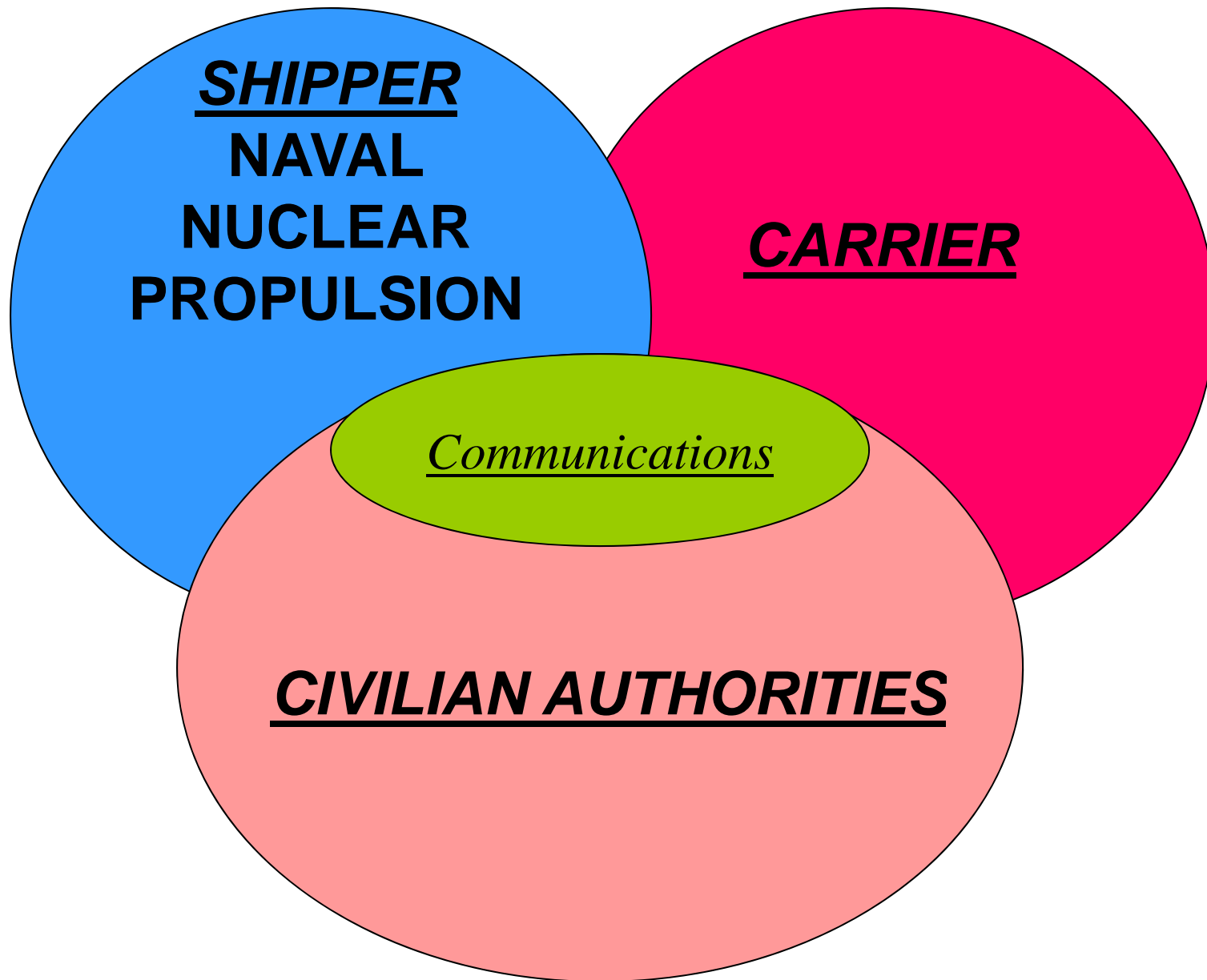
# **NAVAL SPENT FUEL RAIL SHIPMENT ACCIDENT EXERCISE SCENARIO**

- **Road crossing accident/container impact/derail container car**
- **Driver in truck injured**
- **Truck diesel fuel leak**
- **Radiation concern from passersby/citizens**
- **Calls to local authorities**
- **Local Fire/County EMA assume Incident Command (IC)**
- **NNPP escorts assist and advise IC –initial radiological surveys**
- **News media at scene**
- **State RAD Health radiological surveys**
- **Radiological condition normal – rerail – continue shipment**

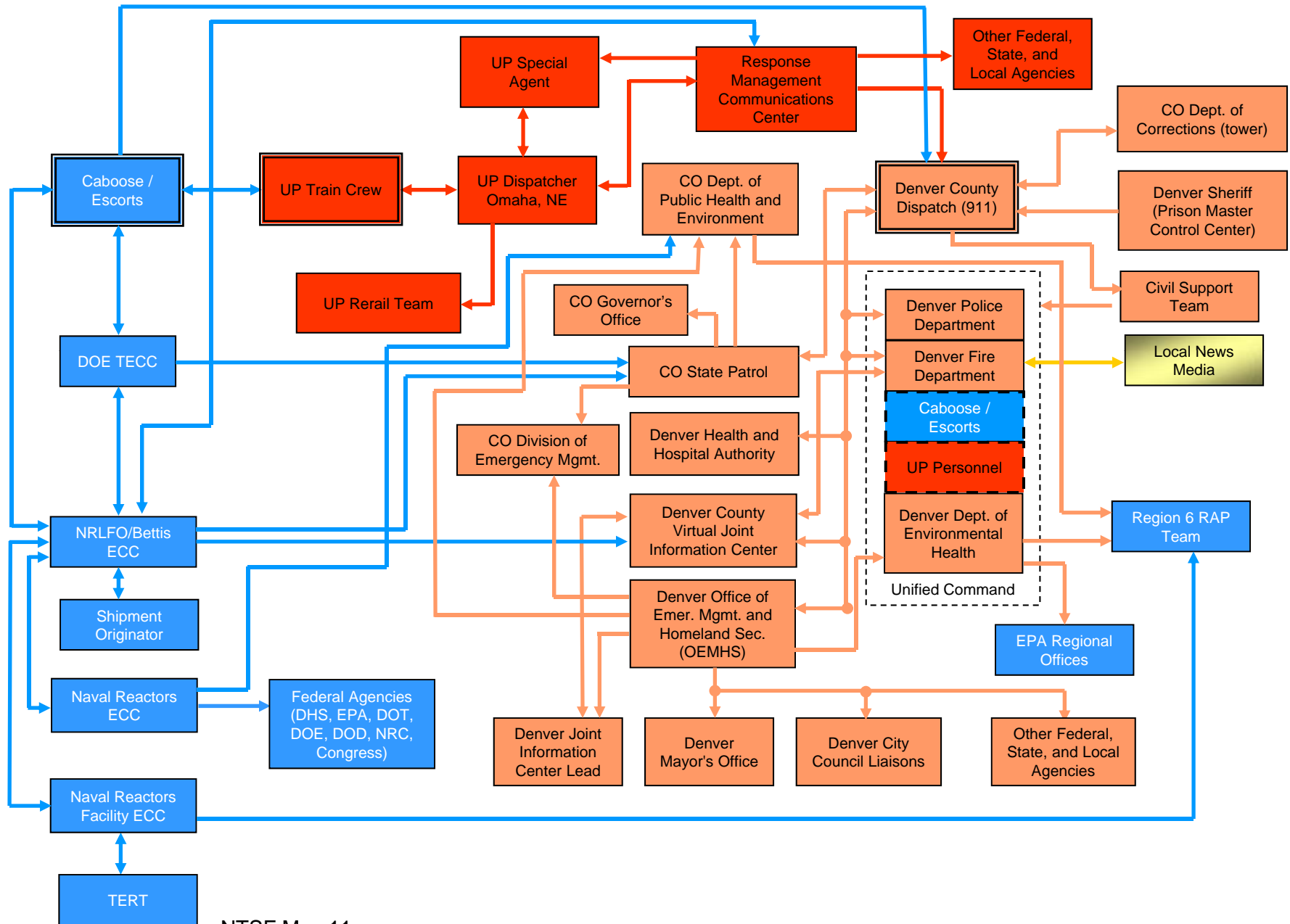
# NAVAL SPENT FUEL RAIL SHIPMENT REGIONAL ACCIDENT EXERCISES



# COORDINATED EMERGENCY RESPONSE



# DENVER, CO, NAVAL SPENT FUEL TRANSPORTATION EXERCISE COMPREHENSIVE COMMUNICATIONS DIAGRAM



# NAVAL SPENT FUEL RAIL SHIPMENT ACCIDENT EXERCISE CONCLUSIONS



- **Cooperative and professional escorts.**
- **Coordinated (shipper/carrier/civilian authorities) response is critical.**
- **Naval spent fuel shipments are safe.**

# NAVAL SPENT FUEL RAIL SHIPMENT ACCIDENT / EMERGENCY PUBLIC AFFAIRS

- Provide accurate information and proper perspective
- Mitigate rumors, minimize chance of panic
- Bettis Lab ECC manning includes Public Information Officers (PIOs)
  - Coordinate formal statements w/ State, railroad and NNPP HQ
    - Word-for-word agreement not required
  - Consistent message(s)
- Quick early statement – bare bones perspective
- Follow-on statement(s) provide more details
- Coordinate with on-scene PIOs