

Public Technical Conference
DOE Congestion Study and Criteria
Designation of National Interest
Electric Transmission Corridors

March 29, 2006

Comments of Edward D. Tatum, Jr.
Old Dominion Electric Cooperative

Constraint Area and Corridor Designation

- Corridors need to be “just right”
- Too broad a designation could frustrate Congress’ intent to facilitate licensing
- Identify specific facilities rather than a family of alternatives
 - Too many; too long
 - Recognize impact on existing facilities

Constraint Area and Corridor Designation

- Existing infrastructure points with generalized paths between
 - Need “off ramps”
 - Opportunity to upgrade existing facilities or utilize existing ROW
 - Need to deliver into congested area
 - Provide States necessary opportunity for final specific line siting

Constraint Area and Corridor Designation

- **Regional Plan**
 - Need to be the result of open, inclusive regional planning process (with predetermined criteria) to identify specific facilities and scope of corridor
 - Facilitate investment by non-traditional utilities

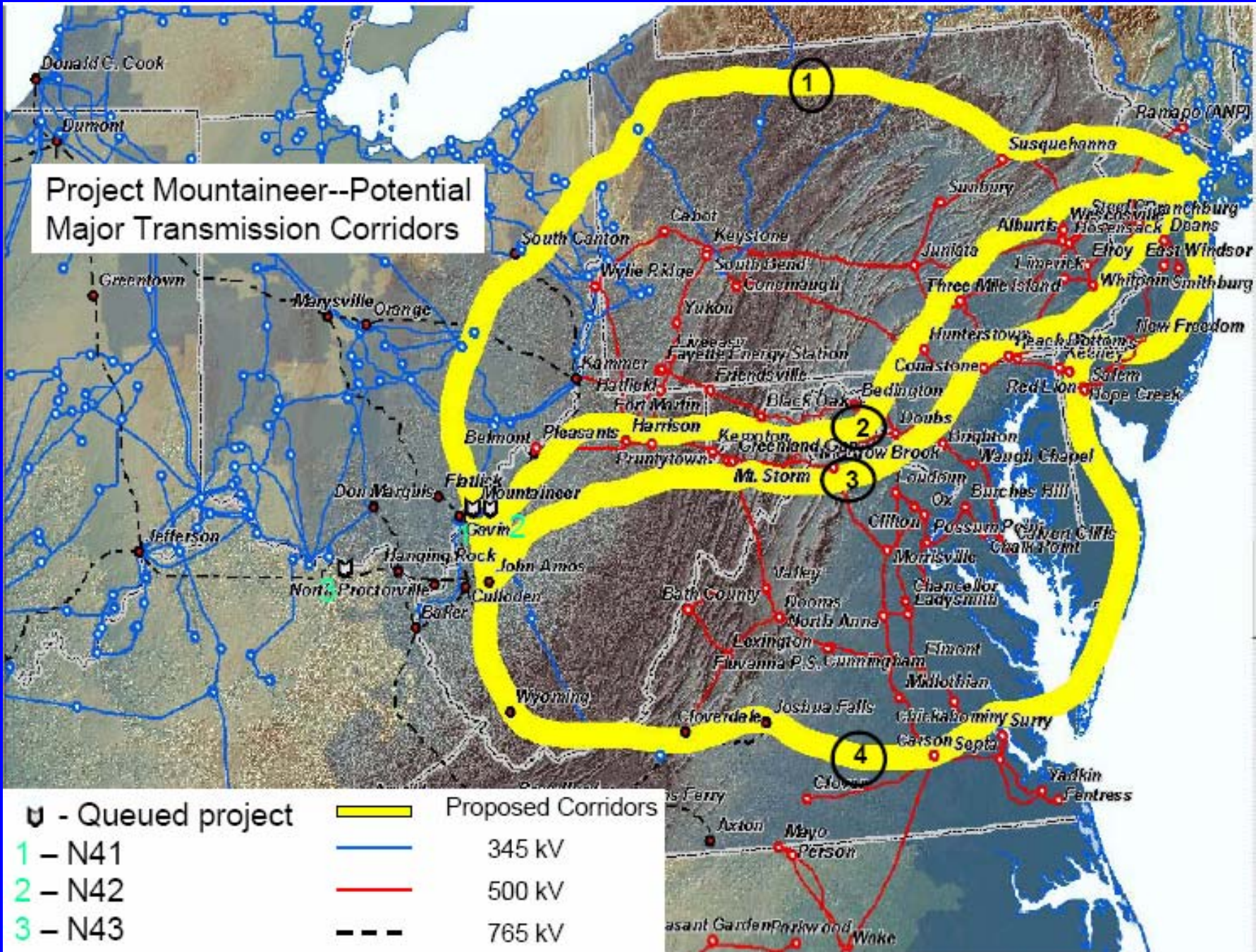
Constraint Area and Corridor Designation

- **Regional Plan**
 - Openness engenders buy in and facilitates solutions
 - Assess delivery and export regions
 - Economics and reliability equally important
 - Chronic load pockets and specific LSEs

Constraint Area and Corridor Designation

- **Regional Plan**
 - Include resource adequacy via deliverability of new and surplus base-load generation
 - Assure viability of long-term transmission rights

Project Mountaineer--Potential Major Transmission Corridors



U - Queued project	 Proposed Corridors
1 - N41	 345 kV
2 - N42	 500 kV
3 - N43	 765 kV

Criteria

- 2&3: Assess long term power supply planning impacts as well as existing conditions; sufficient granularity for load pockets
- 4&5: Should consider but have less direct impact on corridor selection
- 7: Give more weight to proven and dependable technologies

Criteria

- Criteria 8: Part of any planning process
 - Not in Sec 216(a)(4)
 - Transmission is *not* a commodity capable of competing with generation and demand response
 - “Enabler”; a necessary regulated transportation system to facilitate a competitive wholesale market