

Figure 2-18. View of BPA's Big Eddy Substation from Columbia View Drive (looking east)



Figure 2-19. View of Entrance to Big Eddy Substation (looking east)



Figure 2-20. View of Big Eddy Substation from Columbia View Drive (looking south)



Figure 2-21. View of Big Eddy Substation from The Dalles Dam Overlook (looking south)



Figure 2-22. View of BPA Transmission lines Exiting Big Eddy Substation (from Columbia View Drive, looking northeast)



Figure 2-23. View along Fifteen Mile Road (near E3/M3, looking northeast)



Figure 2-24. View along Moody Road (near E7/M7, looking north)



Figure 2-25. View along Washington SR 14 (near E9/M9, looking southwest)



Figure 2-26. View from Rattlesnake Road (near E16, looking north)



Figure 2-27. View from Cameron Road (near E17, looking east)



Figure 2-28. View from Intersection of Knight Road and Washington SR 142 (near E25/M23/W23, looking west)



Figure 2-29. View from Knight Road near proposed Knight Substation sites (looking southwest)



Figure 2-30. View from Knight Road near proposed Knight Substation sites (looking northeast)



Figure 2-31. View from intersection of Erickson Road and Dalles Mountain Road (near M13, looking south)



Figure 2-32. View from Olson Road (near M20/W20, looking southwest)



Figure 2-33. View from Dock Road (near W3, looking northeast)



Figure 2-34. View from Washington SR 14 (near W4, looking south)



Figure 2-35. View from Dalles Mountain Road (near W7, looking south)



Figure 2-36. View from Columbia Hills State Park (near W8, looking northeast)



Figure 2-37. View from Horseshoe Bend Road (near W17, looking southwest)



Figure 3-1. Photo Location 1. West Alternative Crossing of SR14 (from SR-14 near Dalles Mountain Road, Looking west, 0.2 mile east of line crossing)



Photo Location 1, continued. West Alternative Crossing of SR14 (from SR-14 near Dalles Mountain Road, Looking west, 0.2 mile east of line crossing)



Figure 3-2. Photo Location 2. West Alternative in Columbia Hills State Park (from Dalles Mountain Road, Looking South)

Existing View: from Dalles Mountain Road at Columbia Hills Natural Area Preserve trailhead

South



Simulated View: Single-Circuit Option, Parallel to Existing Line

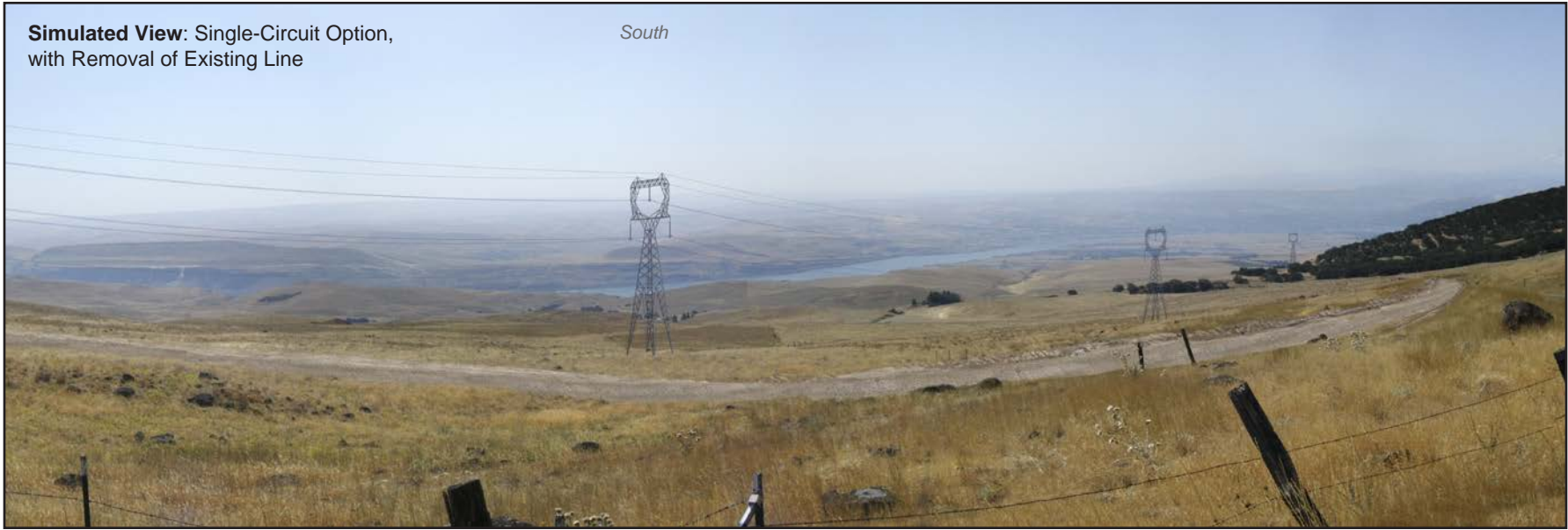
South



Photo Location 2, continued. West Alternative in Columbia Hills State Park (from Dalles Mountain Road, Looking South)

Simulated View: Single-Circuit Option,
with Removal of Existing Line

South



Simulated View: Double-Circuit Option,
with Removal of Existing Line

South

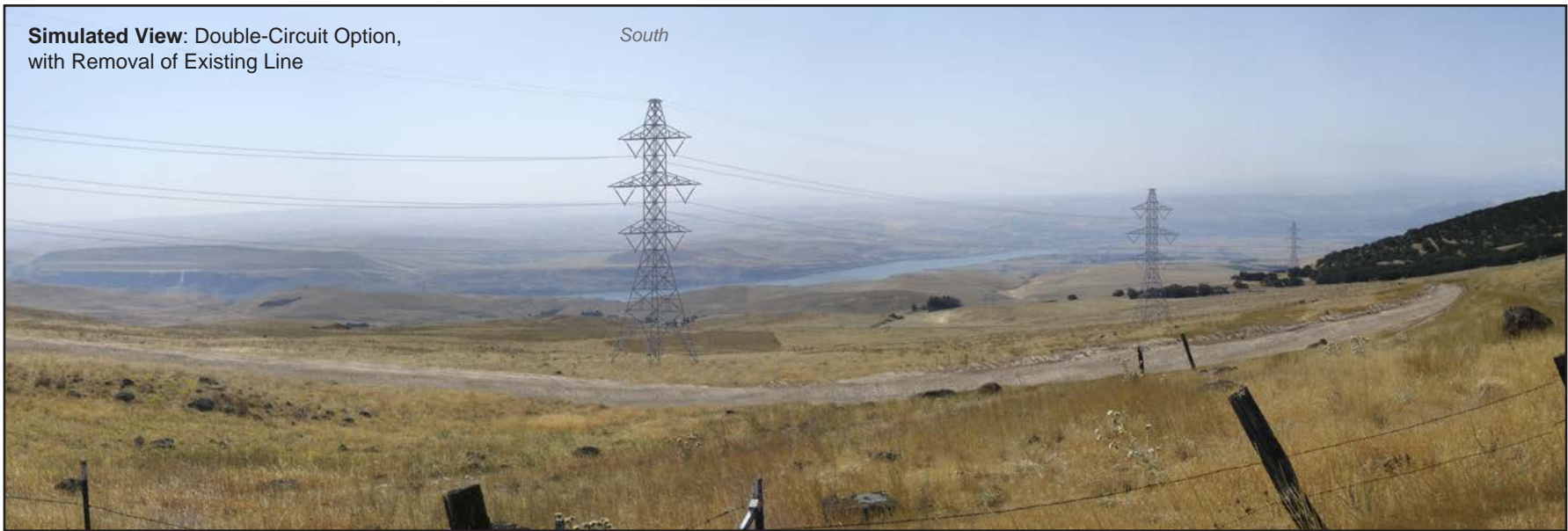


Figure 3-3. Photo Location 3. West Alternative in Columbia Hills State Park (from Dalles Mountain Road, Looking East)

Existing View: from Dalles Mountain Road at Columbia Hills Natural Area Preserve trailhead

East



Simulated View: Single-Circuit Option, Parallel to Existing Line

East



Photo Location 3, continued. West Alternative in Columbia Hills State Park (from Dalles Mountain Road, Looking East)

Simulated View: Single-Circuit Option,
with Removal of Existing Line

East



Simulated View: Double-Circuit Option,
with Removal of Existing Line

East



Figure 3-4. Photo Location 4. West Alternative at Klickitat Trailhead (Looking West)

Existing View: from the Klickitat Trail beside Swale Creek, just west of Harms Road

West



Simulated View: Single-Circuit Option, Parallel to Existing Line

West



Photo Location 4, continued. West Alternative at Klickitat Trailhead (Looking West)

Simulated View: Single-Circuit Option,
with Removal of Existing Line

West



Simulated View: Double-Circuit Option,
with Removal of Existing Line

West



Figure 3-5. Photo Location 5. West or Middle Alternative near Little Klickitat River (from Esteb Road, Looking Northwest toward Mt. Adams)

Existing View: from Esteb Road 0.66 mile north of Horseshoe Bend Road



Simulated View: Single-Circuit Option



Figure 3-6. Photo Location 6. West, Middle or East Alternative Heading North toward Knight Substation Sites (from Horseshoe Bend Road, Looking Northwest toward Mt. Adams)

Existing View: from Horseshoe Bend Road at Crafton Road



Simulated View: Single-Circuit Option



Figure 3-7. Photo Location 7. West, Middle or East Alternative Approaching Knight Substation Sites (from Knight Road, Looking Southwest)

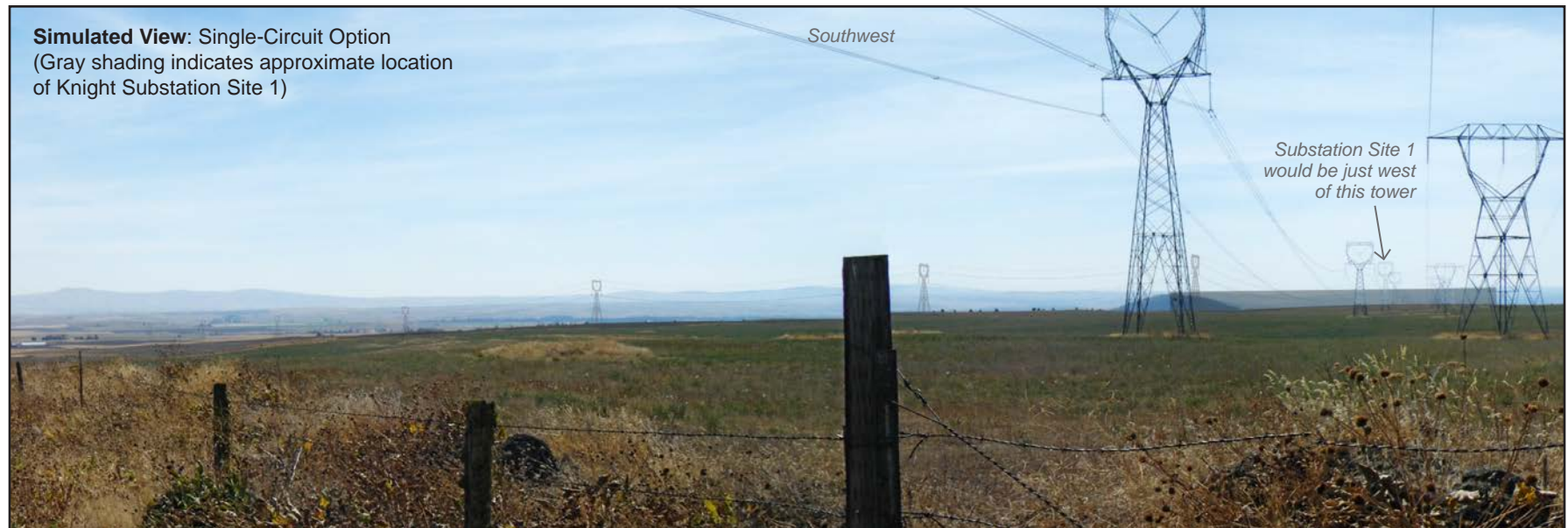


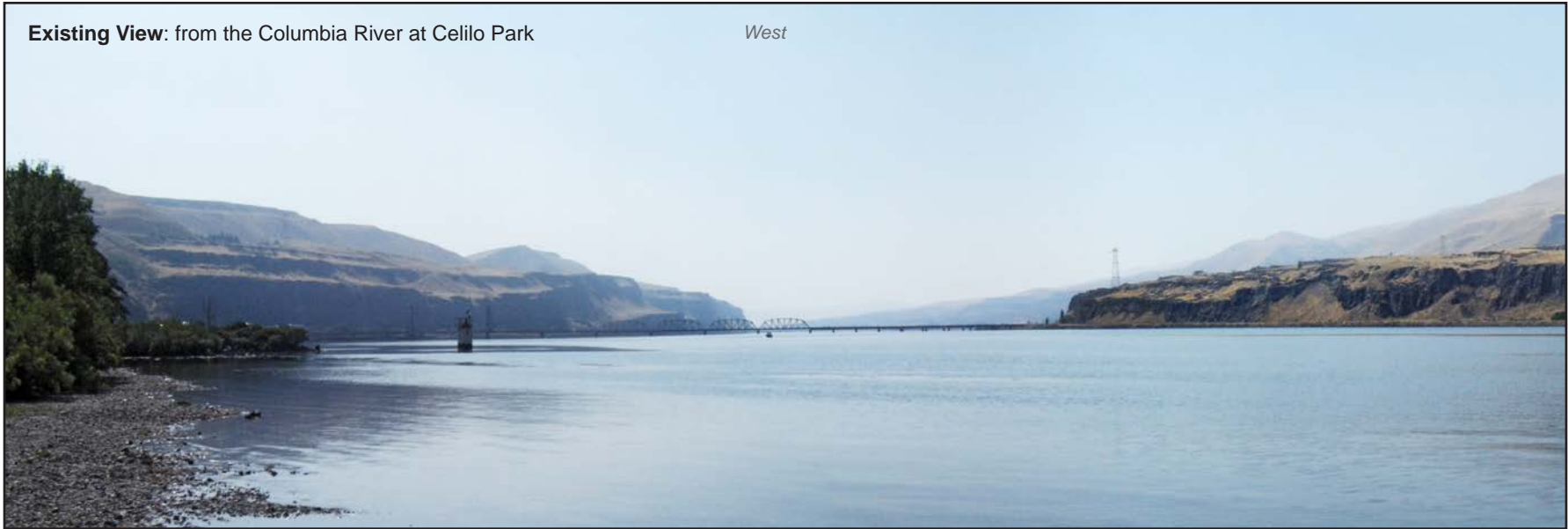
Photo Location 7, continued. West, Middle or East Alternative Approaching Knight Substation Sites (from Knight Road, Looking Southwest)



Figure 3-8. Photo Location 8. Middle or East Alternative Crossing of Columbia River (from Celilo Park Looking West; 1.15 miles from line crossing)

Existing View: from the Columbia River at Celilo Park

West



Simulated View: Single-Circuit Option,
Parallel to Existing Line

West

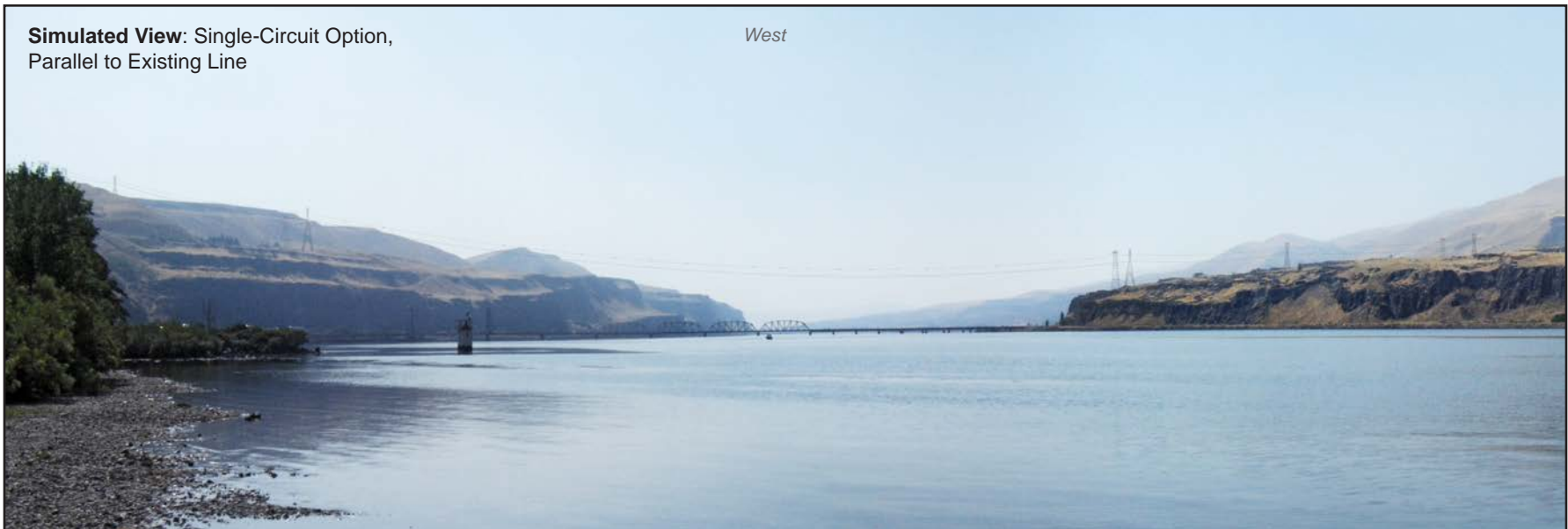


Photo Location 8, continued. Middle or East Alternative Crossing of Columbia River (from Celilo Park Looking West; 1.15 miles from line crossing)

Simulated View: Double-Circuit Option, with Removal of Existing Line

West



Figure 3-9. Photo Location 9. Middle or East Alternative along Columbia Hills (from Celilo Park, Looking North)



Photo Location 9, continued. Middle or East Alternative along Columbia Hills (from Celilo Park, Looking North)



Figure 3-10. Photo Location 10. Middle or East Alternative Crossing of SR14 (from SR14 Looking West; 0.12 mile from crossing)

3-50



Photo Location 10, continued. Middle or East Alternative Crossing of SR14 (from SR14 Looking West; 0.12 mile from crossing)



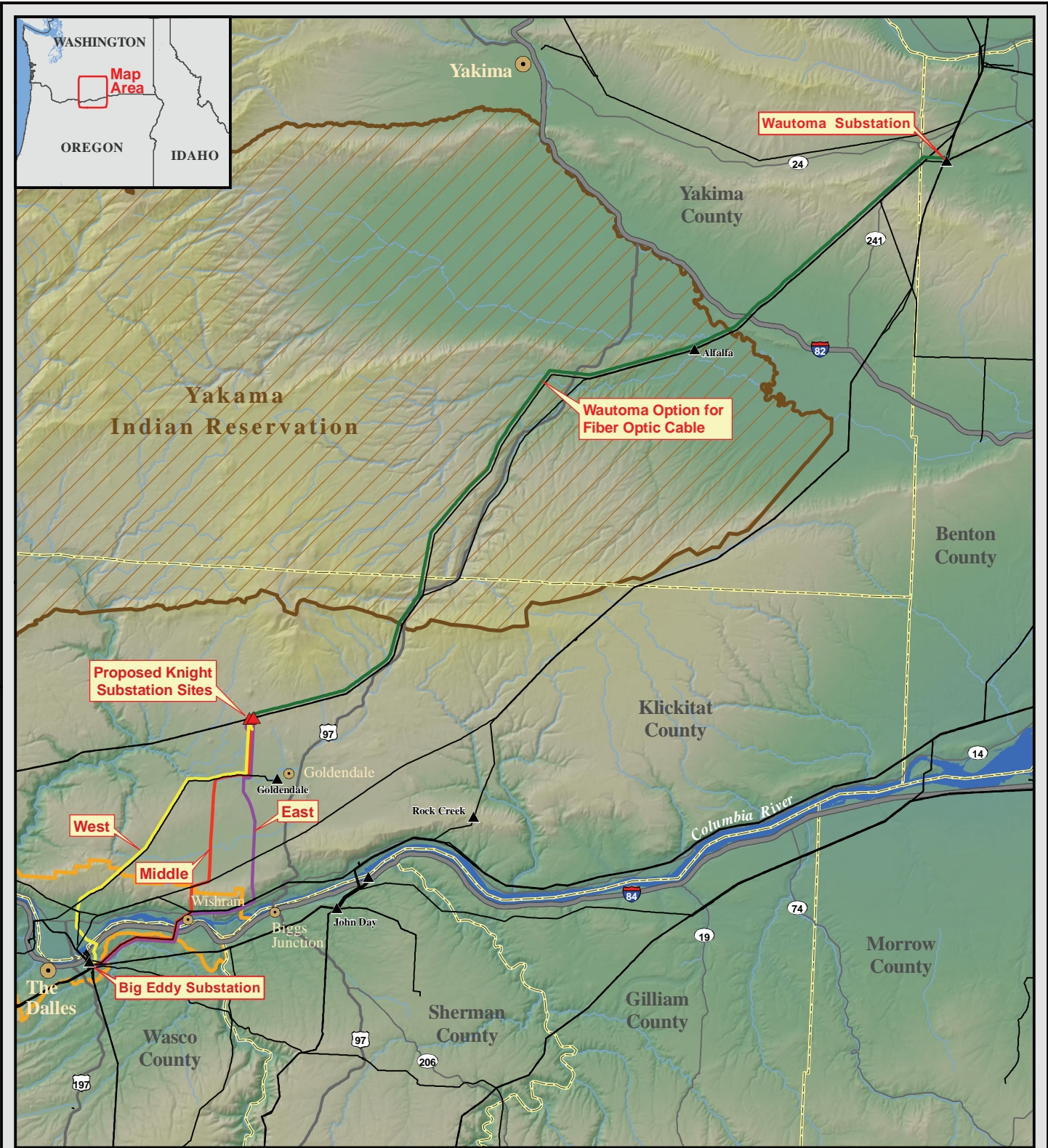
Figure 3-11. Photo Location 11. East Alternative along Columbia Hills (from SR14 at Wishram Road, Looking Northwest)

3-52



Photo Location 11, continued. East Alternative along Columbia Hills (from SR14 at Wishram Road, Looking Northwest)

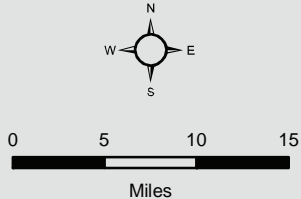




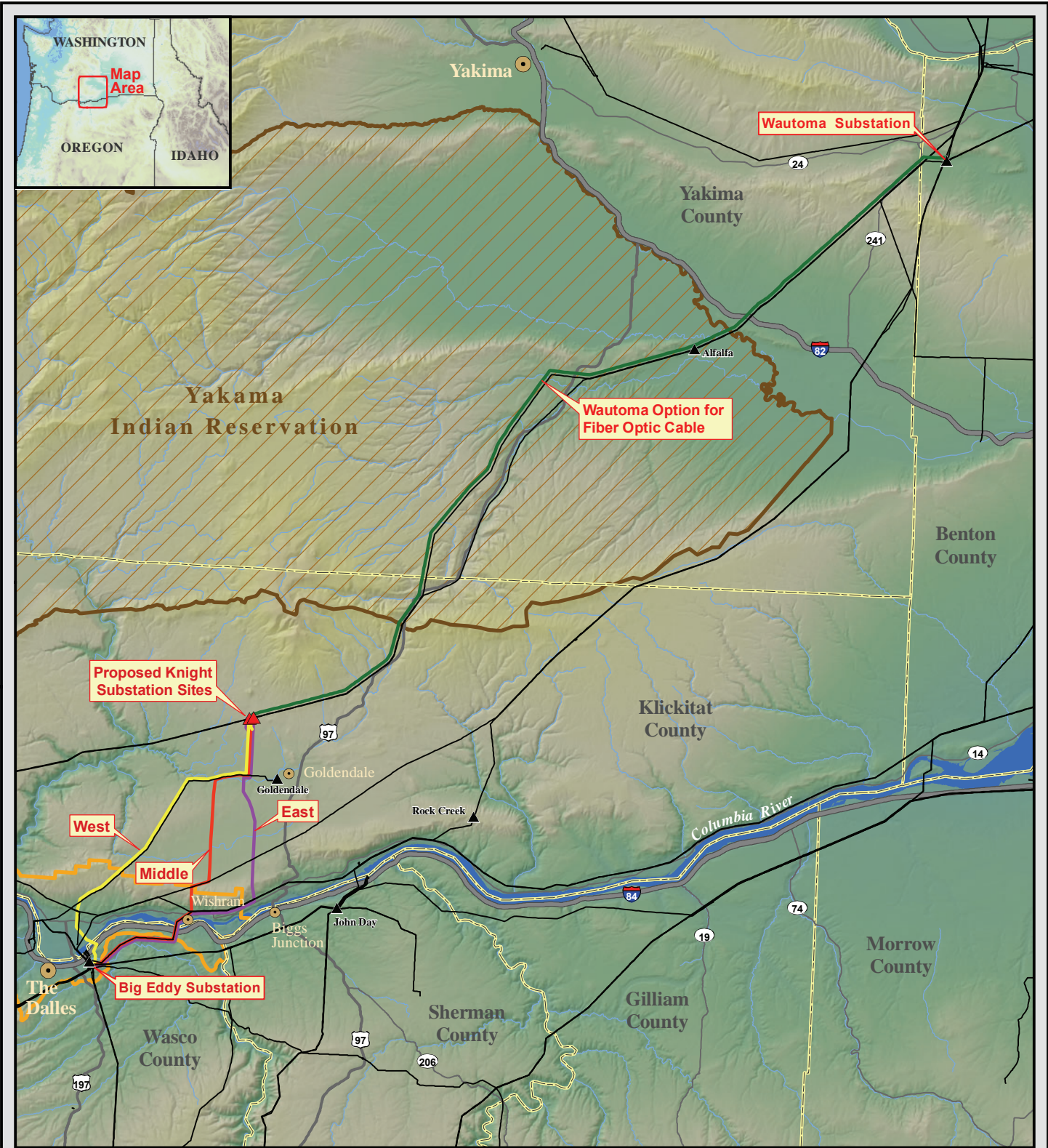
Proposed Facilities

- West Alternative
- Middle Alternative
- East Alternative
- Fiber Optic Cable
- ▲ Knight Substation Sites

- BPA Transmission Lines
- ▲ BPA Substations
- Columbia River Gorge National Scenic Area Boundary
- Indian Reservation
- County Boundary



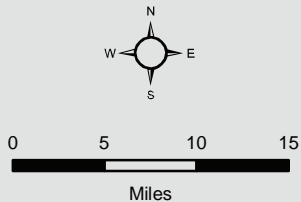
Map S-1. Project Overview



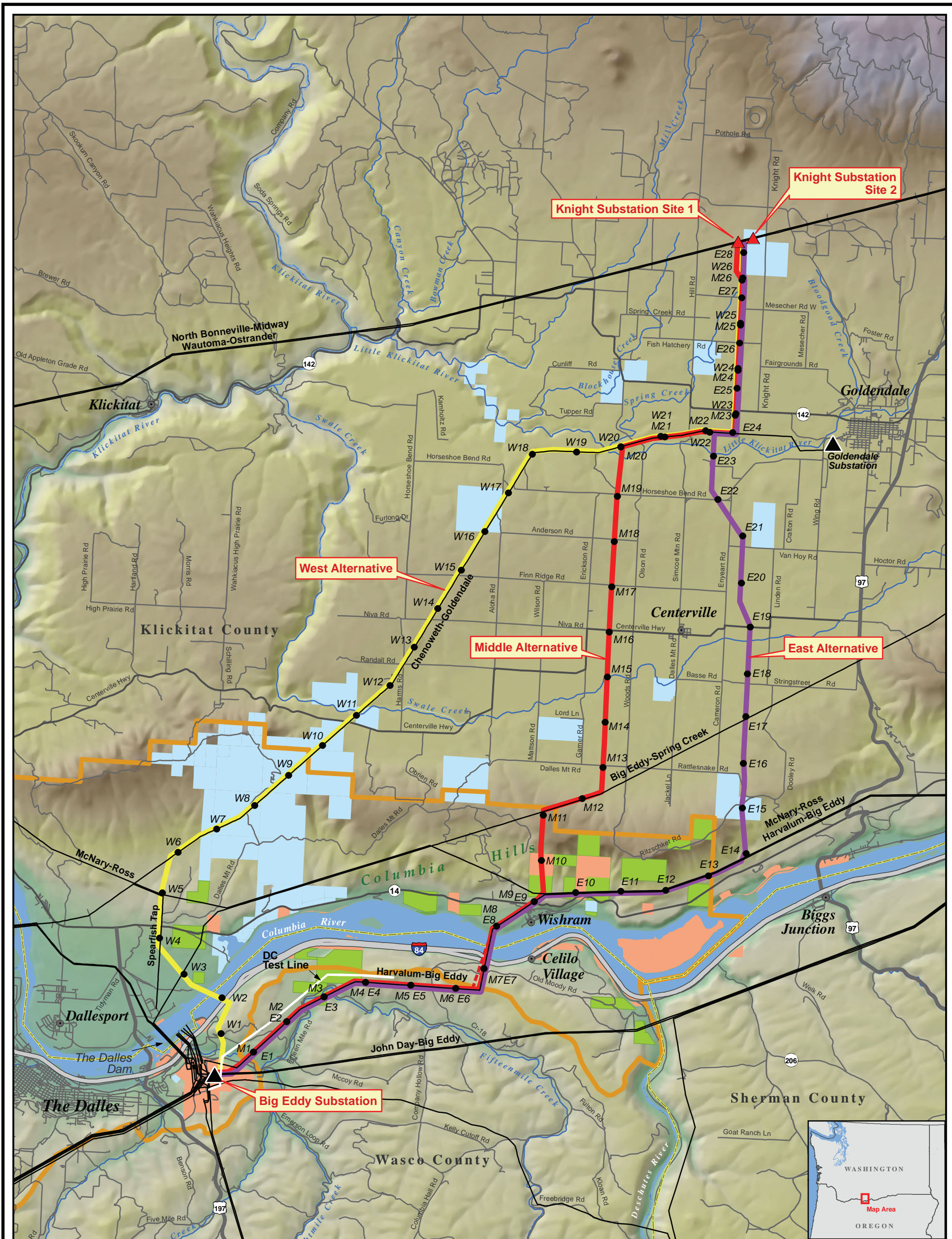
Proposed Facilities

- West Alternative
- Middle Alternative
- East Alternative
- Fiber Optic Cable
- ▲ Knight Substation Sites

- BPA Transmission Lines
- ▲ BPA Substations
- Columbia River Gorge National Scenic Area Boundary
- Indian Reservation
- County Boundary



Map 1-1. Project Overview



Existing Facilities

- ▲ BPA Substation
- BPA Transmission Lines

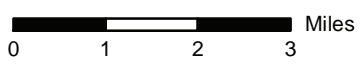
Proposed Facilities

- East Alternative
- Middle Alternative
- West Alternative
- - - Potential Route Adjustment

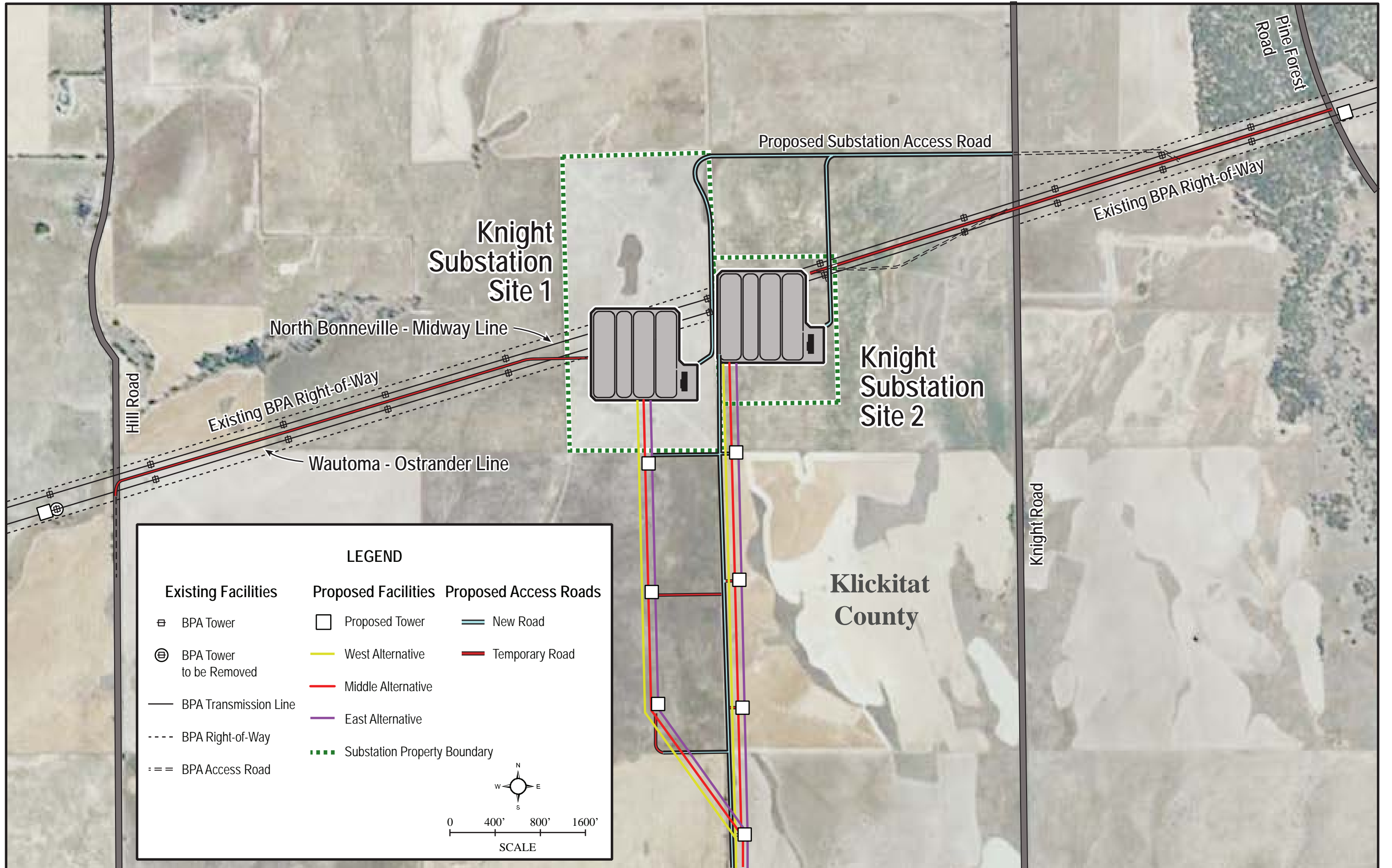
Proposed Facilities (cont'd)

- ▲ Knight Substation Sites
- Line Mile Markers

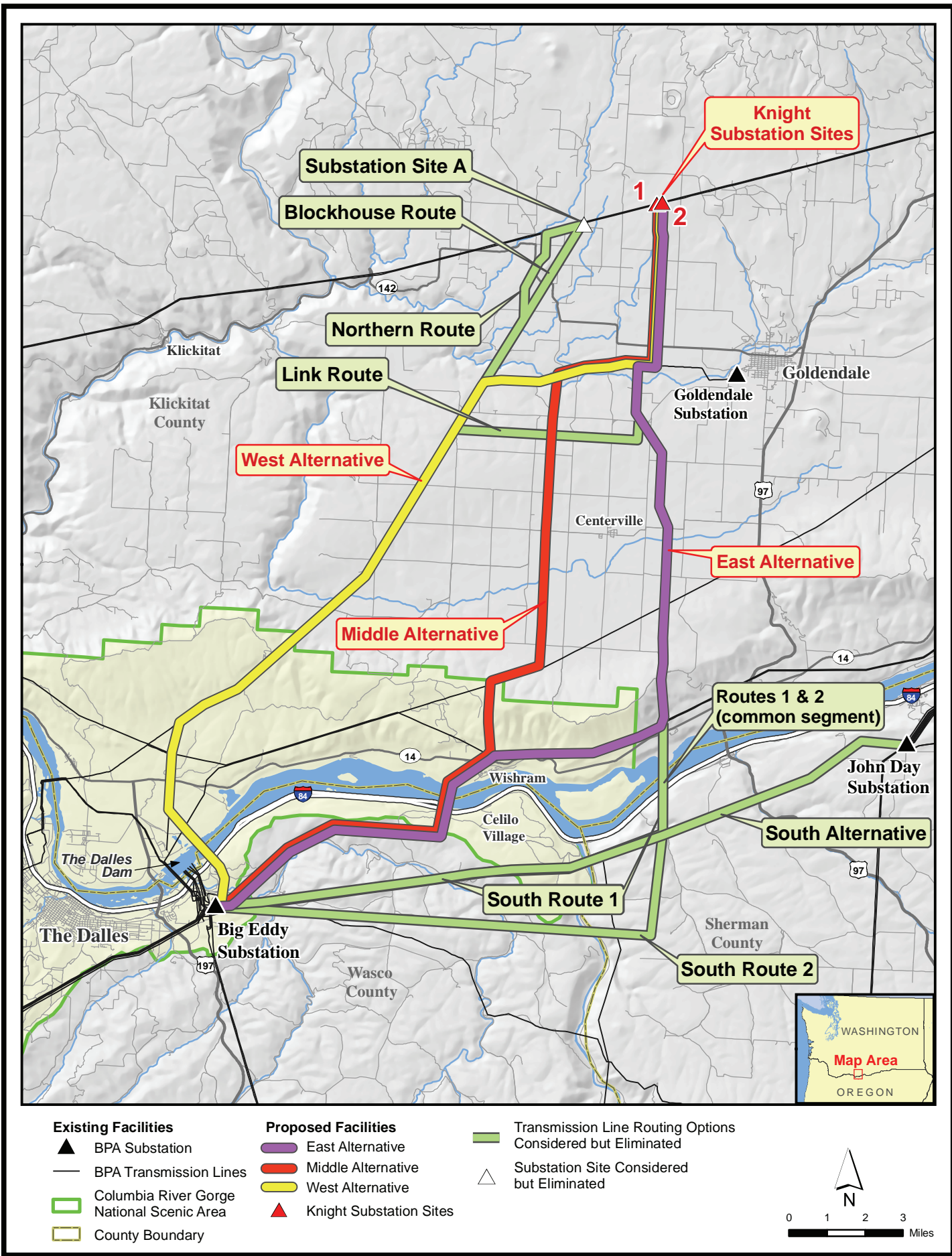
- Federal
- State
- Tribal Trust
- Columbia River Gorge National Scenic Area
- County Boundary



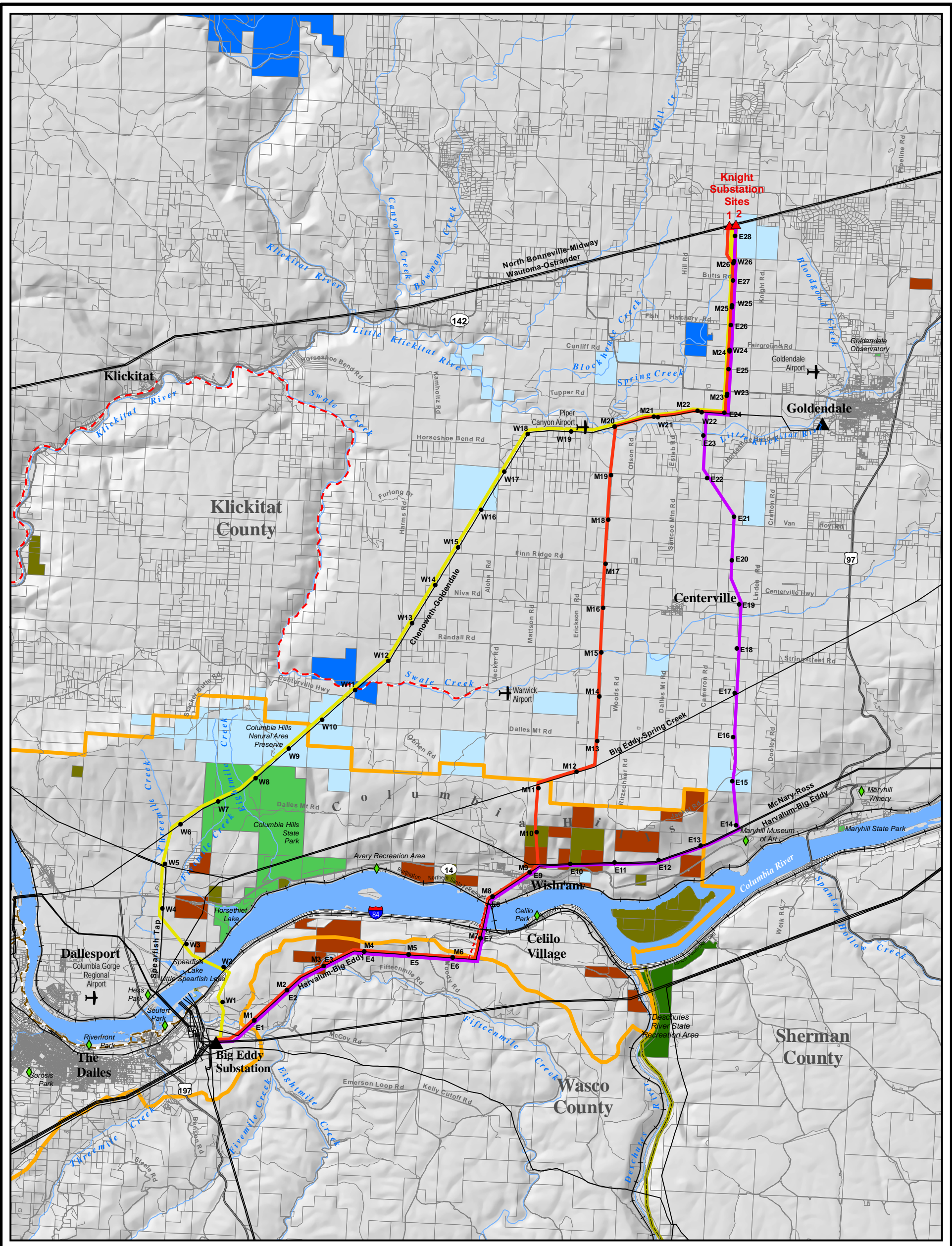
Map 2-1. Project Overview of Proposed Alternatives



Map 2-2. Knight Substation Options



Map 2-3. Options Considered but Eliminated from Detailed Study



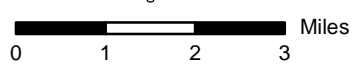
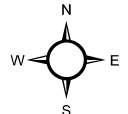
Existing Facilities

- ▲ BPA Substation
- Railroads
- BPA Transmission Lines
- - - Klickitat Trail
- - - Riverfront Trail
- ◆ Local Parks

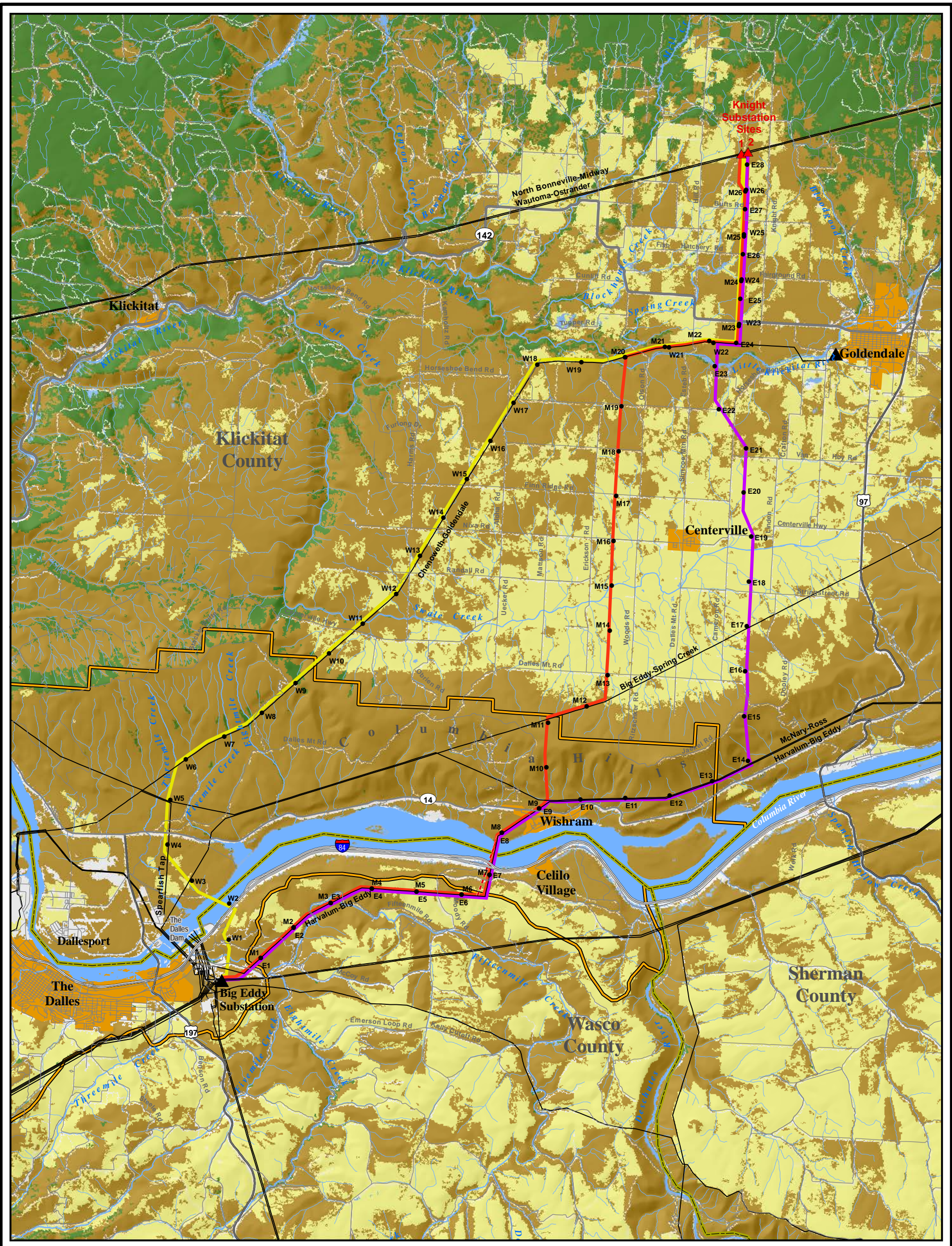
Proposed Facilities

- West Alternative
- Middle Alternative
- East Alternative
- - - Potential Route Adjustment
- ▲ Knight Substation Sites
- Line Mile Markers

- WA Department of Natural Resources
- WA Department of Fish and Wildlife
- Tribal Trust
- US Forest Service
- WA State Parks
- OR Parks and Recreation
- County Boundary
- Columbia River Gorge National Scenic Area



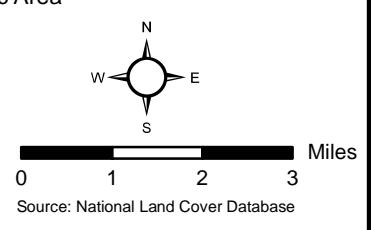
Map 3-1. Land Ownership



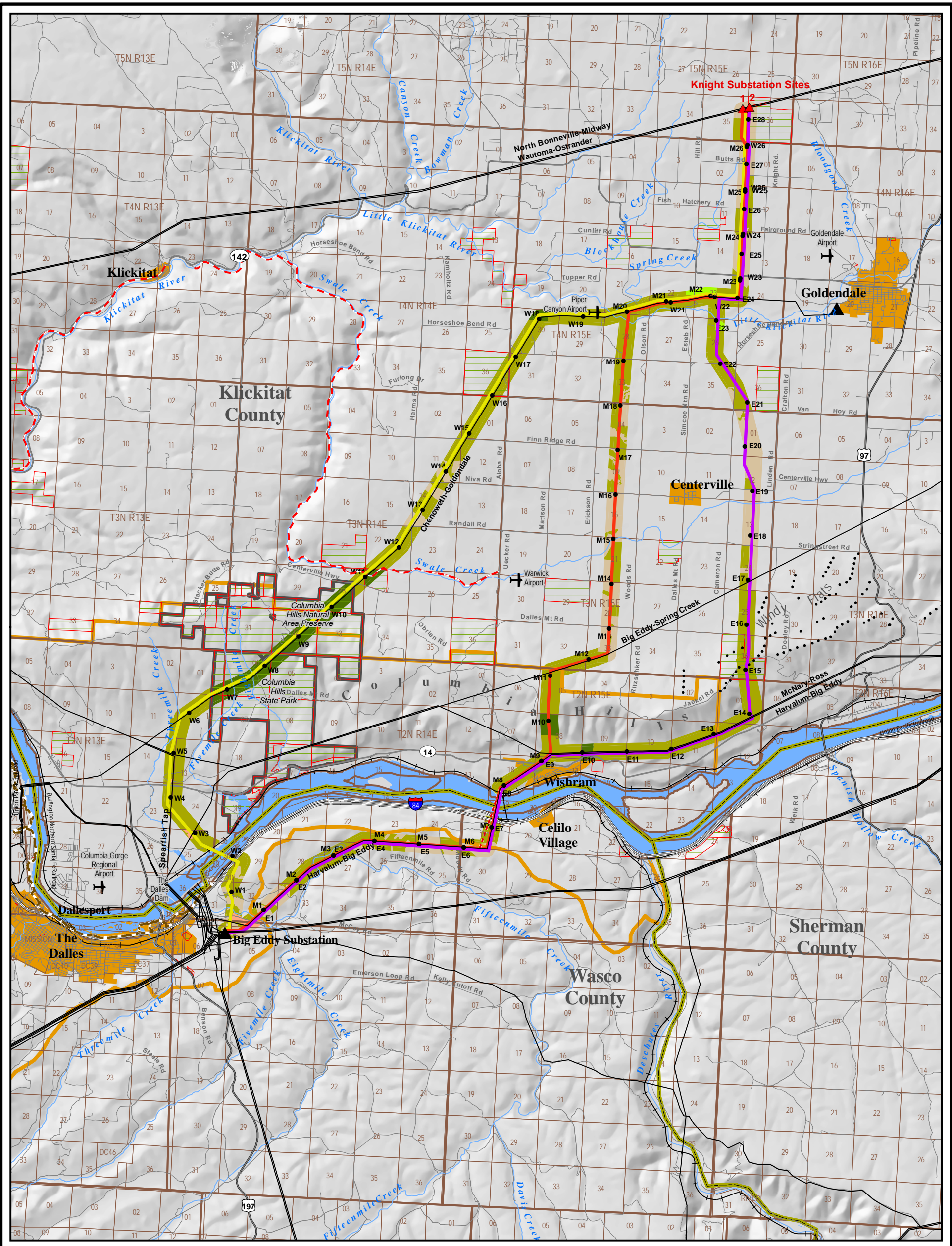
Existing Facilities
 ▲ BPA Substation
 — BPA Transmission Lines

Proposed Facilities
 — West Alternative
 — Middle Alternative
 — East Alternative
 - - - Potential Route Adjustment
 ▲ Knight Substation Sites
 • Line Mile Markers

■ Forest
 ■ Rangeland
 ■ Cultivated Crops
 ■ County Boundary
 ■ Columbia River Gorge National Scenic Area
 ■ Urban Areas



Map 3-2. Land Cover



Existing Facilities

- ▲ BPA Substation
- BPA Transmission Lines
- Railroads
- Wind Turbines

Proposed Facilities

- West Alternative
- Middle Alternative
- East Alternative
- - - Potential Route Adjustment
- ▲ Knight Substation Sites
- Line Mile Markers

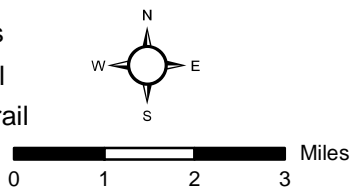
Land Use Survey*

- Rangeland
- Irrigated Cropland
- Non-Irrigated Crop
- Orchard/Vineyard
- Conservation/Recreation

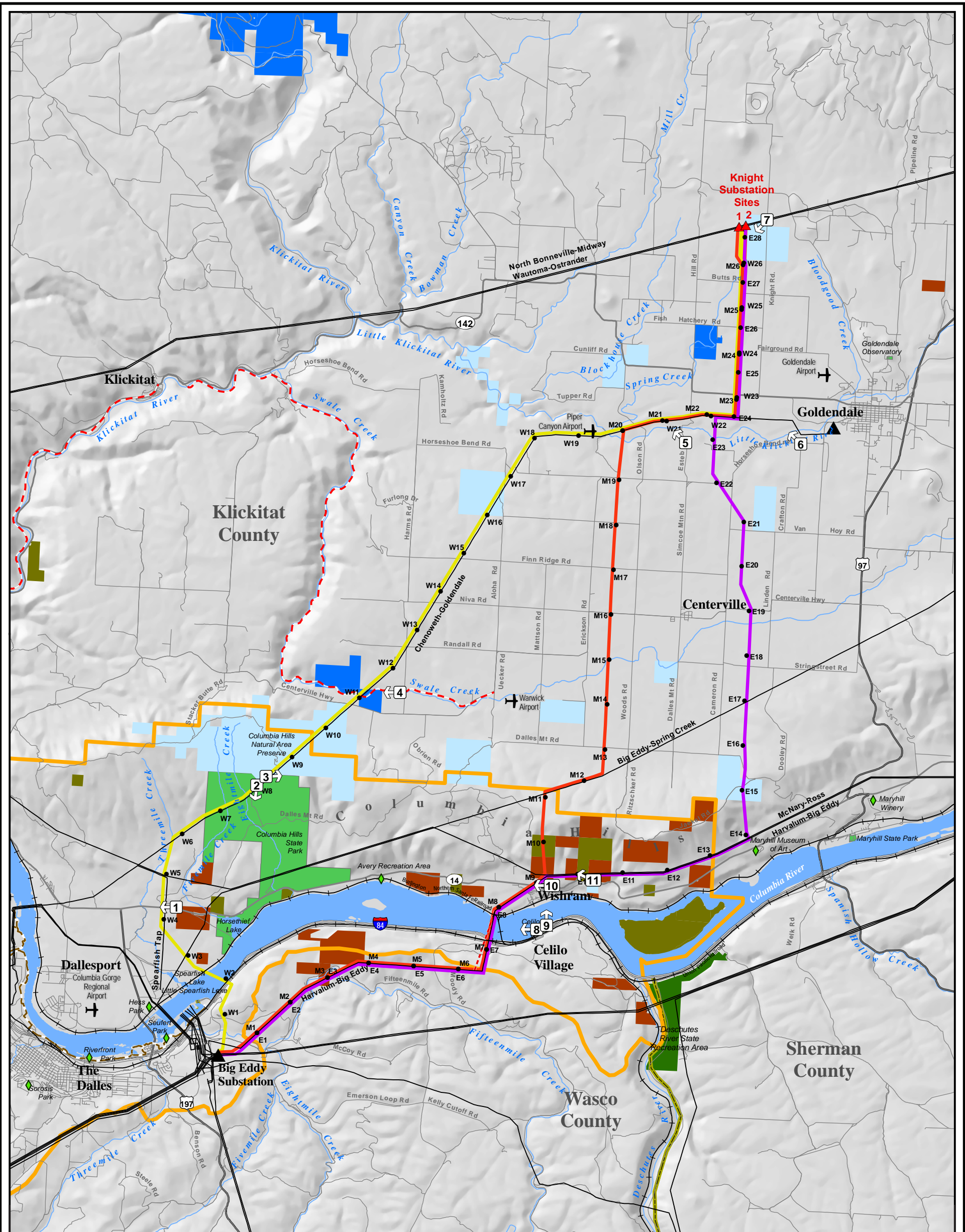
County Boundary

- State Land
- Columbia River Gorge National Scenic Area
- Sections
- Townships
- Urban Areas
- - - Klickitat Trail
- - - Riverfront Trail

* Land use data shown is enlarged for illustrative purposes. Land use shown is valid only for areas inside the transmission line right-of-way.



Map 3-3. Land Use



1 Photo Location and Direction

Existing Facilities

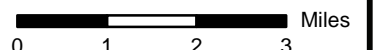
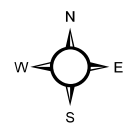
- ▲ BPA Substation
- Railroads
- BPA Transmission Lines
- - - Klickitat Trail
- - - Riverfront Trail
- ◆ Local Parks

Proposed Facilities

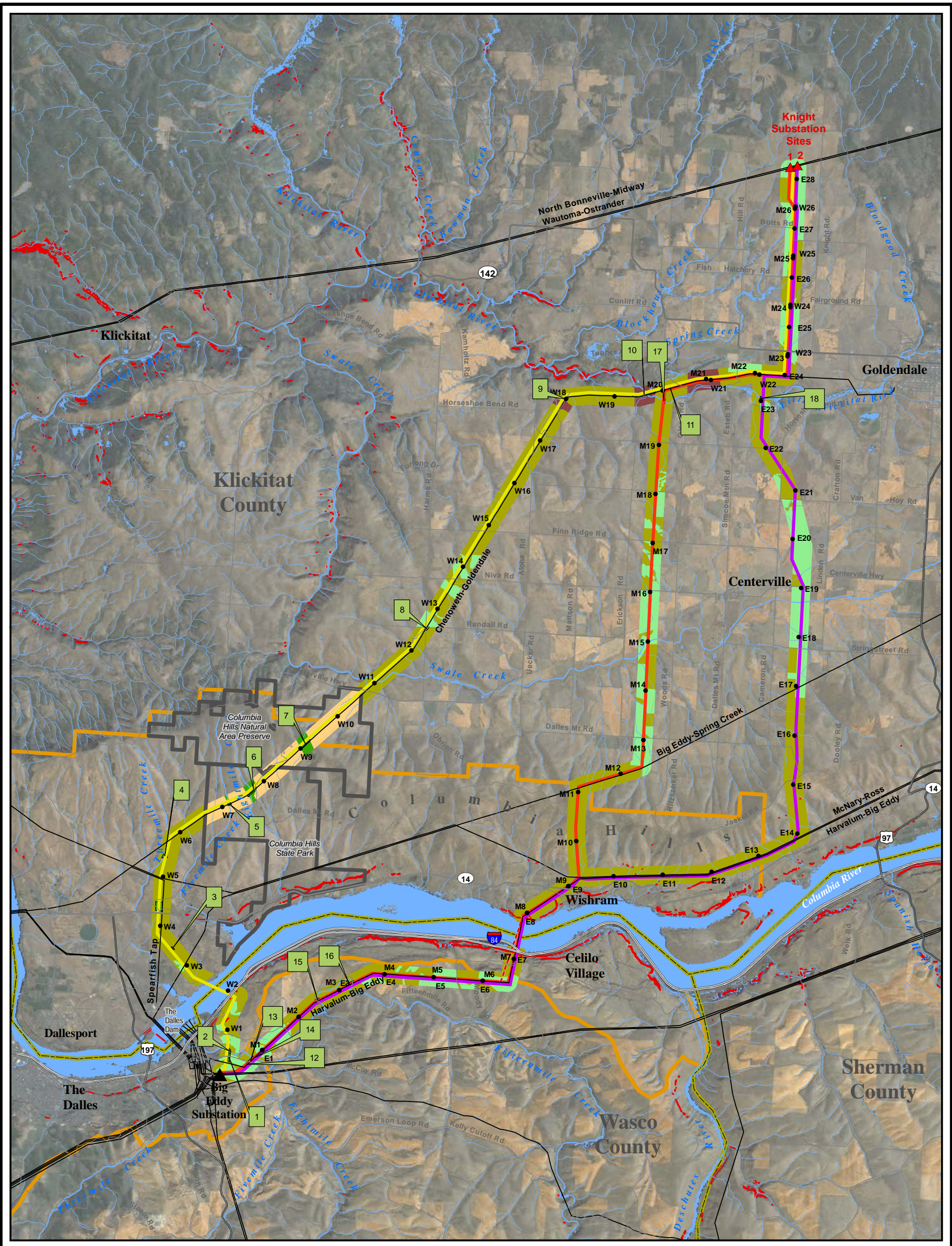
- West Alternative
- Middle Alternative
- East Alternative
- - - Potential Route Adjustment
- ▲ Knight Substation Sites
- Line Mile Markers

Land Ownership

- WA Department of Natural Resources
- WA Department of Fish and Wildlife
- Tribal Trust
- US Forest Service
- WA State Parks
- OR Parks and Recreation
- County Boundary
- Columbia River Gorge National Scenic Area



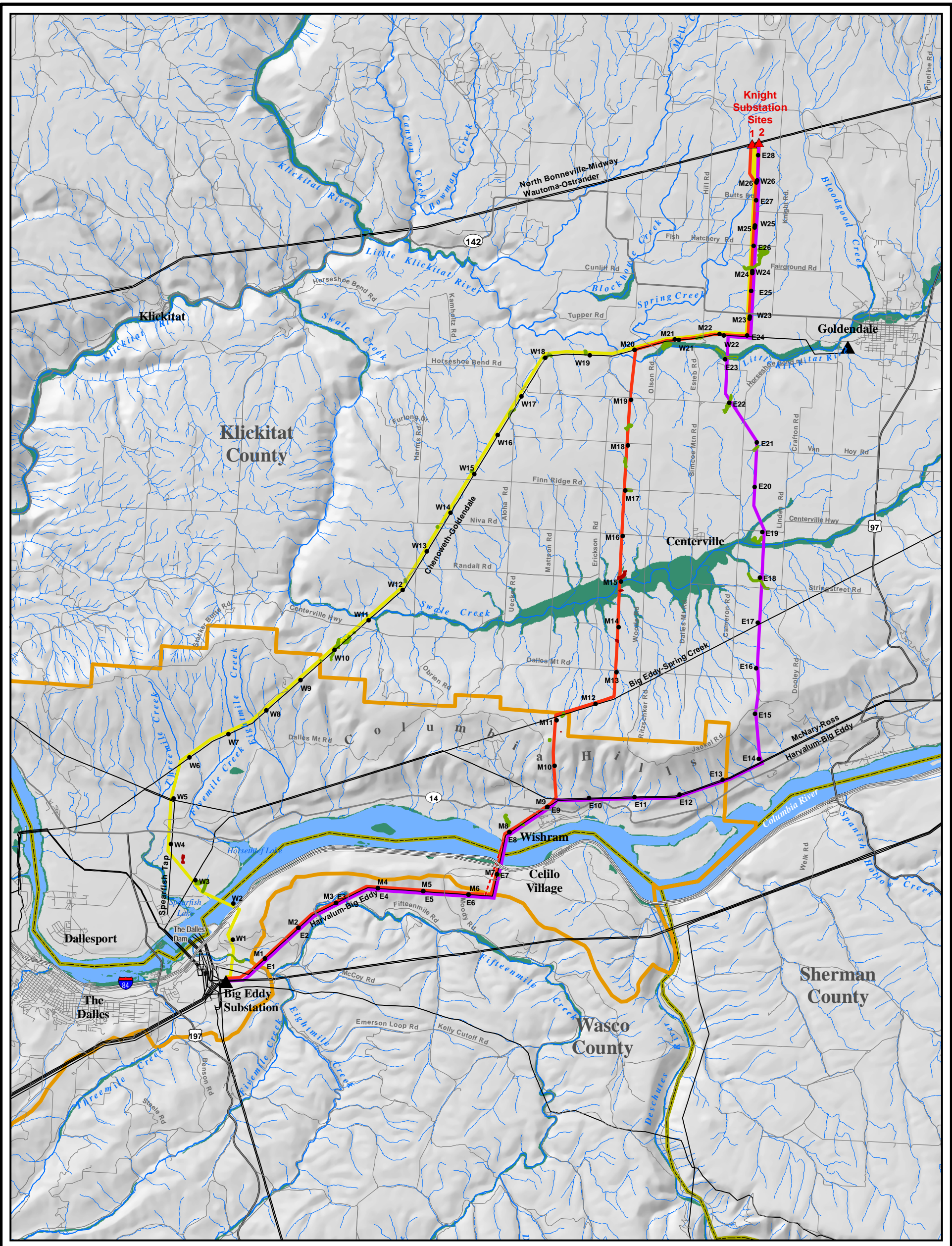
Map 3-4. Photo Locations



<p>Existing Facilities</p> <ul style="list-style-type: none"> ▲ BPA Substation — BPA Transmission Lines 	<p>Proposed Facilities</p> <ul style="list-style-type: none"> — West Alternative — Middle Alternative — East Alternative - - - Potential Route Adjustment ▲ Knight Substation Sites • Line Mile Markers 	<p>Vegetation Cover Survey*</p> <ul style="list-style-type: none"> Woodland Woodland Number Cropland Grassland Shrub-Steppe Disturbed Grassland/Shrub-Steppe Cliffs/Rock Outcrops 	<ul style="list-style-type: none"> County Boundary Columbia River Gorge National Scenic Area Parks and Preserves
----------------------------------------------------------------------------------------------------------------------------------------	----------------------------------------------------------------------------------------------------------------------------------------------------------------------------------------------------------------------------------------------------------------------------	------------------------------------------------------------------------------------------------------------------------------------------------------------------------------------------------------------------------------------------------------	---------------------------------------------------------------------------------------------------------------------------------------------------

* Vegetation cover data shown is enlarged for illustrative purposes. Vegetation cover shown is valid only for areas inside the transmission line right-of-way.

Map 3-5. Vegetation Types



Existing Facilities

- ▲ BPA Substation
- BPA Transmission Lines

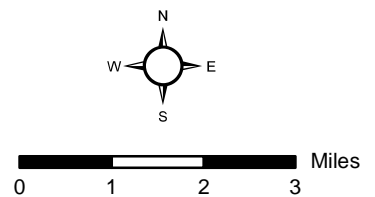
Proposed Facilities

- West Alternative
- Middle Alternative
- East Alternative
- - - Potential Route Adjustment
- ▲ Knight Substation Sites
- Line Mile Markers

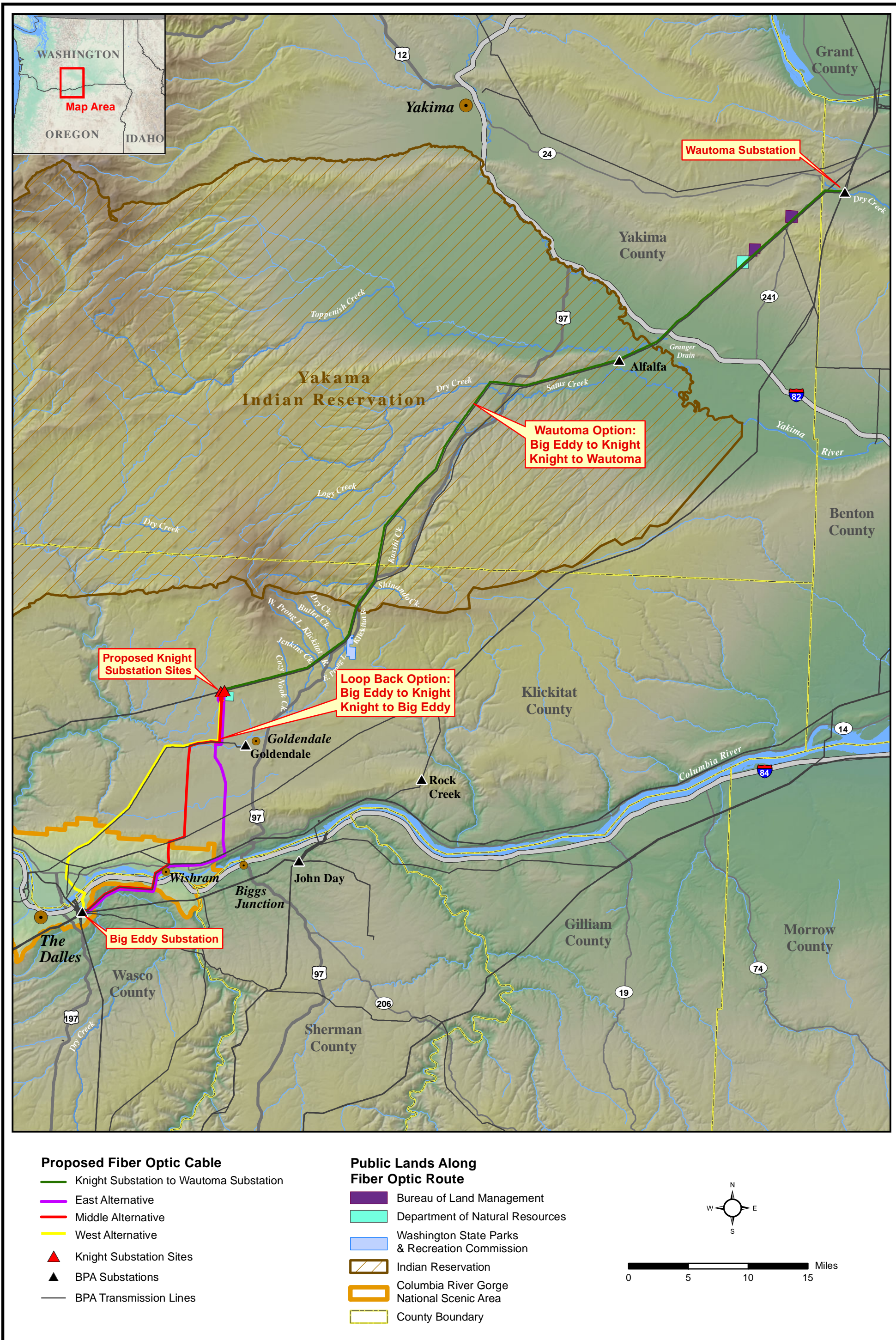
Wetland Survey

- Confirmed Wetlands
- Potential Wetlands

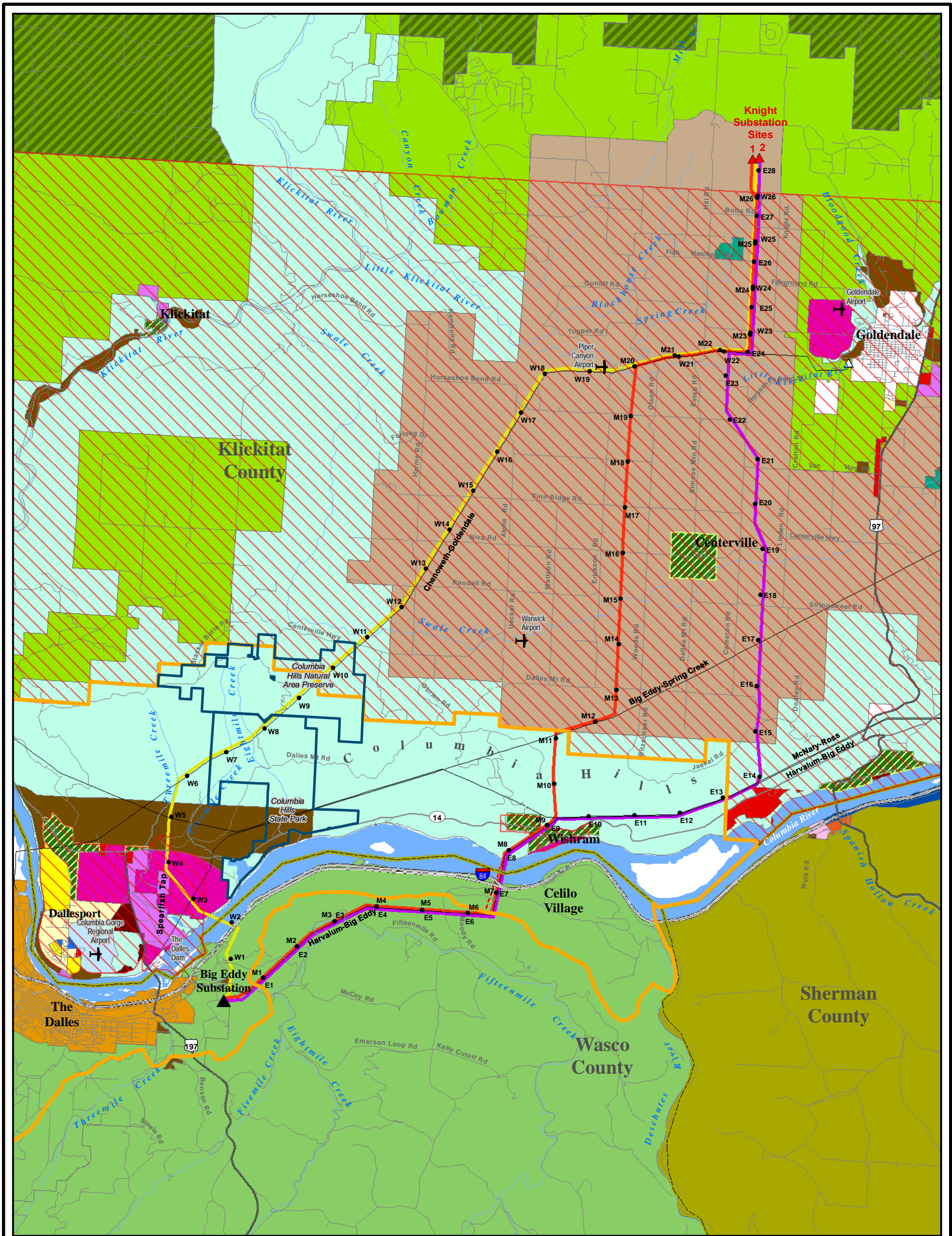
- County Boundary
- 100-yr floodplain



Map 3-7. Water Resources and Wetlands



Map 3-8. Fiber Optic Cable Overview



Existing Facilities

- ▲ BPA Substation
- △ Non-BPA Substation
- ✈ Airports
- BPA Transmission Lines
- State Parks and Preserves
- Columbia River Gorge National Scenic Area

Proposed Facilities

- West Alternative
- Middle Alternative
- East Alternative
- - - Potential Route Adjustment
- ▲ Knight Substation Sites
- Line Mile Markers

Wasco County Zoning

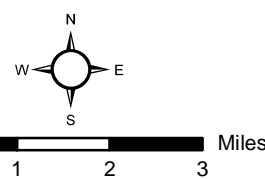
- Exclusive Farm Use (A-1)
- Rural Residential
- Urban
- Agriculture
- Natural Resource
- Rural Commercial
- Rural Industrial
- Rural Residential

Klickitat County Zoning

- Single Family Residential
- Suburban Residential
- Rural Residential
- General Rural
- Rural Center
- Open Space
- Forest Resource
- Extensive Agriculture

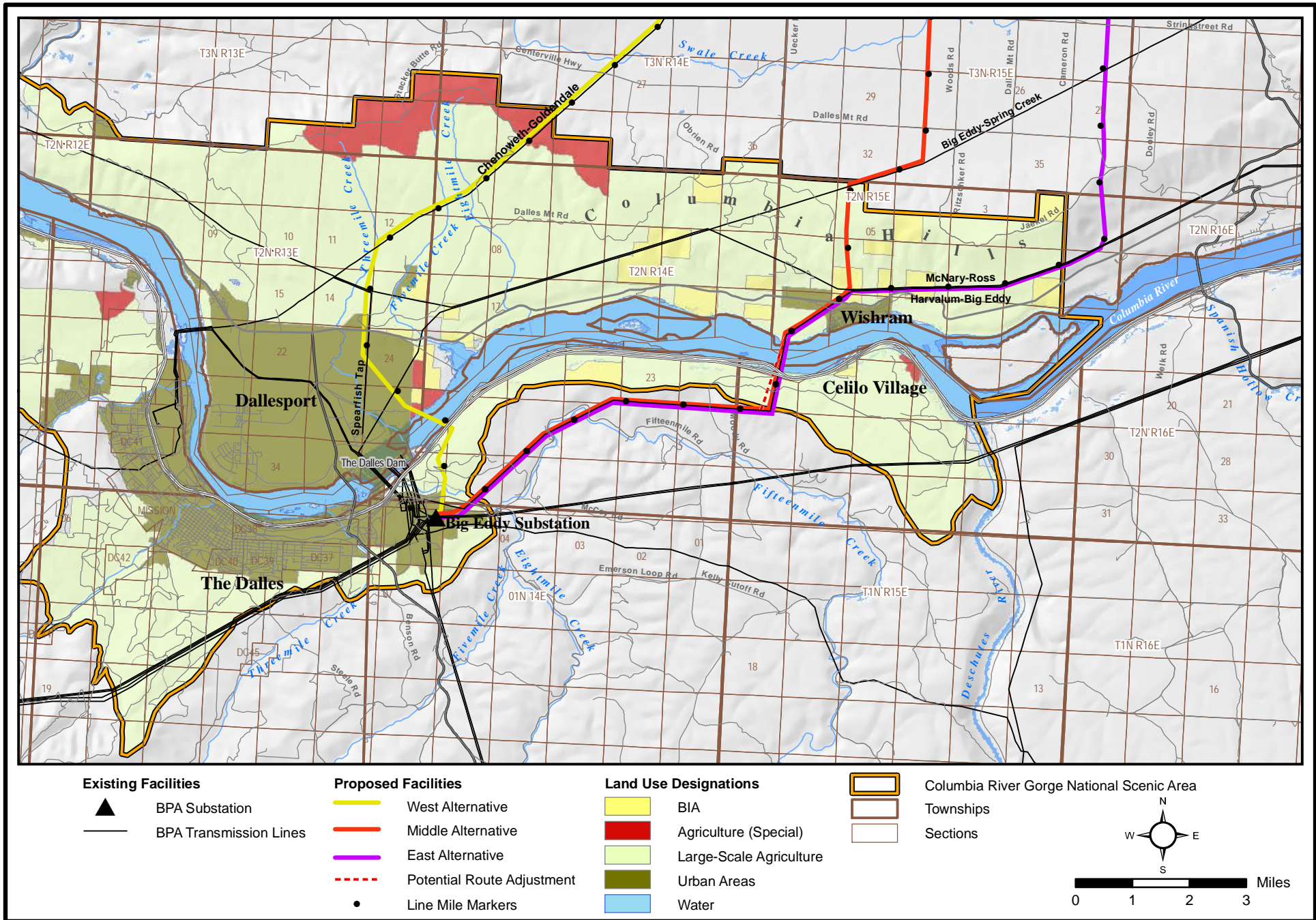
Energy Overlay Zones

- Extensive Agriculture - Cluster
- General Commercial
- Tourist Commercial
- General Industrial
- Industrial Park
- Public
- Airport Development
- Non-County Lands
- Energy Overlay Zone



E:\Seattle\PROJECTS\BPA\00588_09_BigEddy\2010\MapDocs\Figures\BPA_Zoning_GN.mxd

Map 5-1. County Zoning



Map 7-1. Columbia River Gorge National Scenic Area Land Use Designations