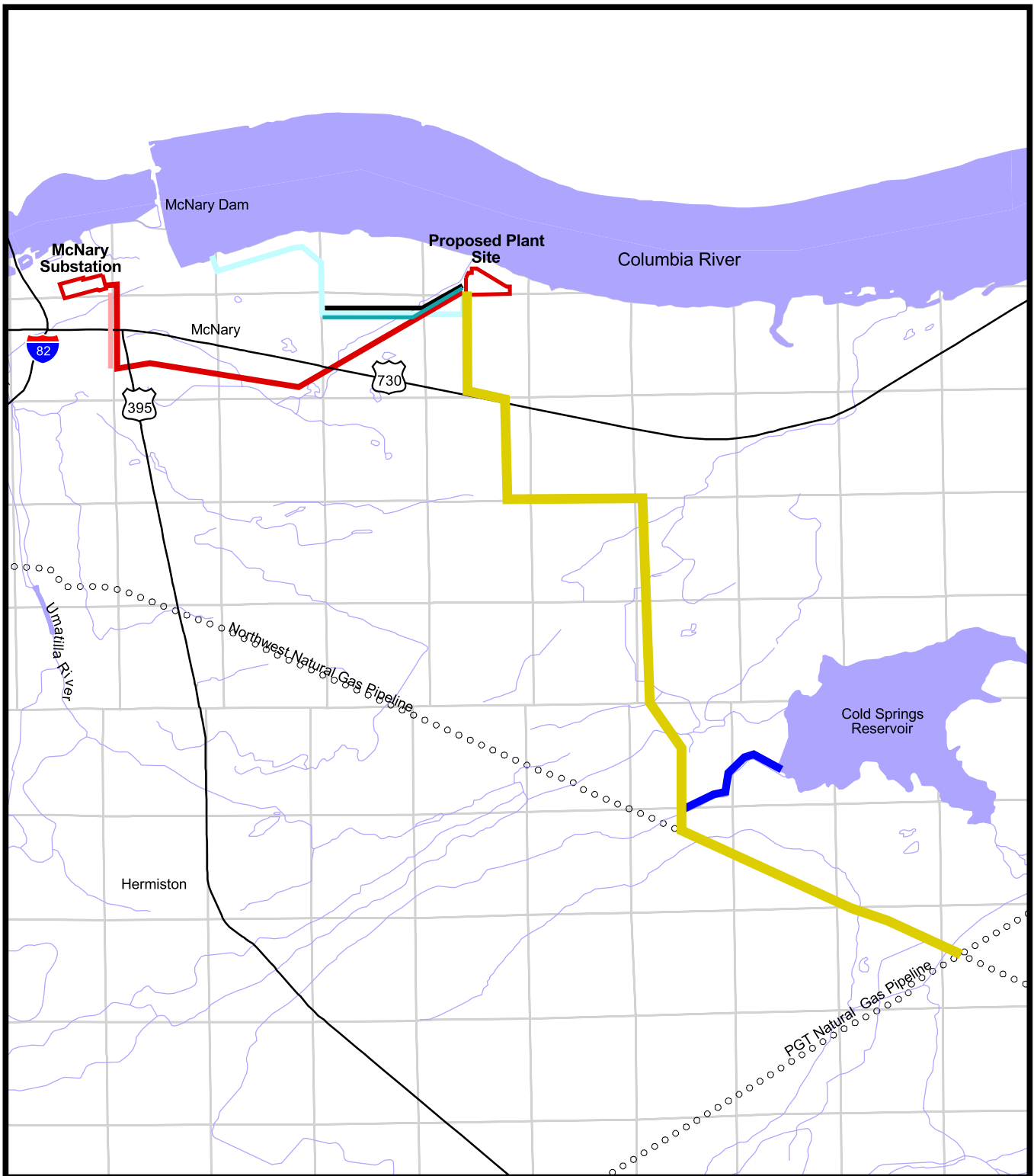









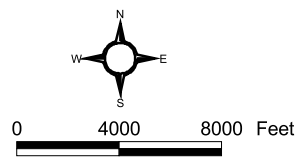
Wanapa Energy Center EIS

Figure 1.1-1
Project Location



Legend

-  Potable Water / Sanitary Sewer Lines
-  Natural Gas Supply and Plant Discharge Water Pipeline
-  Plant Discharge Water Lateral Pipeline
-  Lower Monumental-McNary Transmission Line Relocation
-  Single Circuit Electrical Transmission Line
-  Water Supply Pipeline
-  Plant Access Road

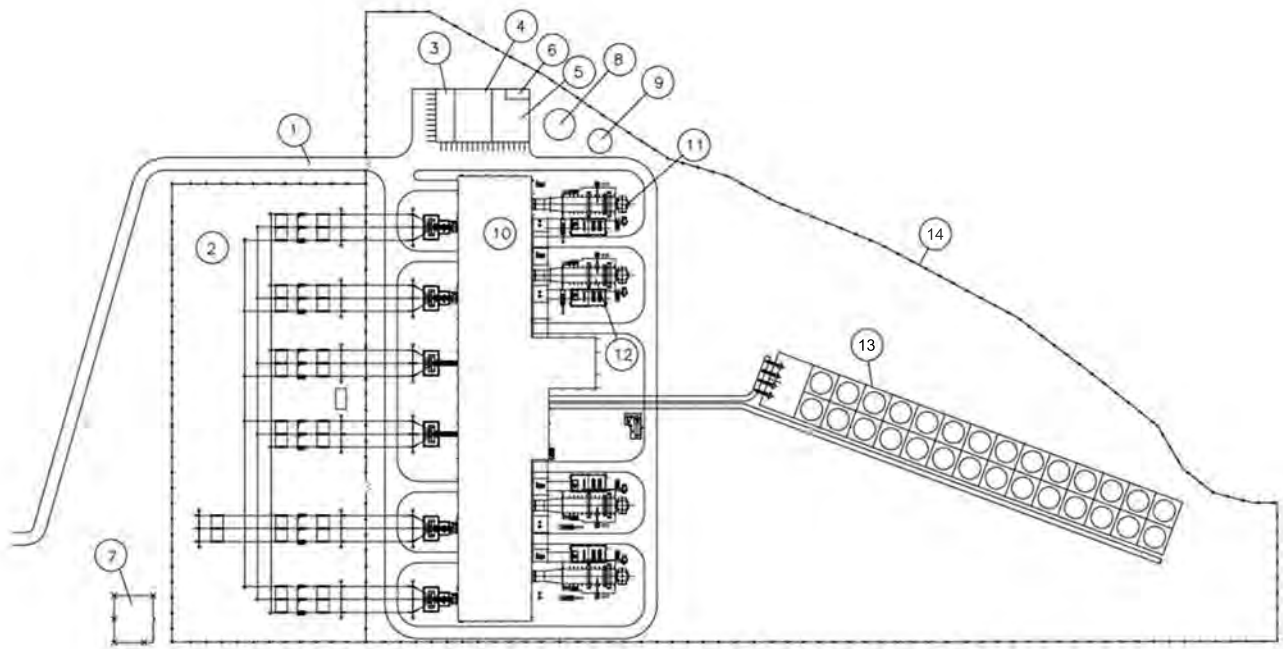


Wanapa Energy Center EIS

Figure 2.3-1

Proposed Action

FACILITIES LEGEND	
PT #	DESCRIPTION
1	ACCESS ROAD
2	SWITCHYARD
3	ADMINISTRATION BUILDING
4	WAREHOUSE/MAINTENANCE
5	WATER TREATMENT BUILDING
6	DIESEL FIRE PUMPS
7	SITE GAS METERING & CONDITIONING AREA
8	RAW WATER STORAGE TANK
9	DEMINERALIZED WATER STORAGE TANK
10	TURBINE BUILDING
11	EXHAUST STACK
12	HEAT RECOVERY STEAM GENERATOR
13	COOLING TOWER
14	SITE SECURITY FENCE



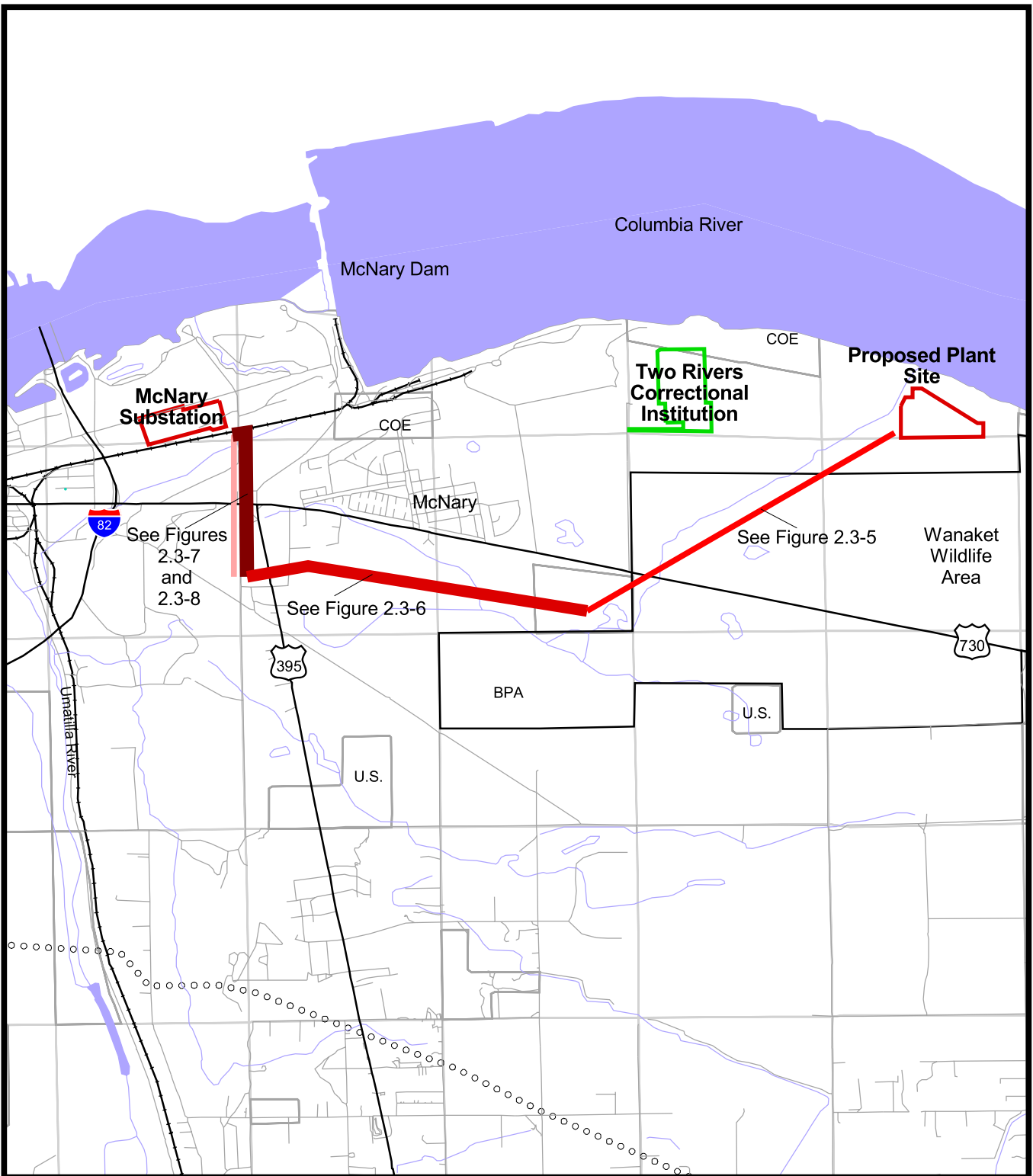
**Wanapa Energy
Center EIS**

Figure 2.3-2
Plant Site







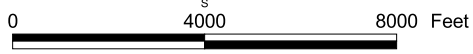
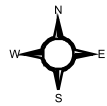
**Wanapa Energy
Center EIS**

Figure 2.3-3
Three-dimensional Ground
Level View of Plant Facilities



Legend

-  Single transmission line in new utility corridor
-  Proposed action plus one parallel transmission line
-  Proposed action plus two parallel transmission lines
-  Lower Monumental-McNary Transmission Line Relocation

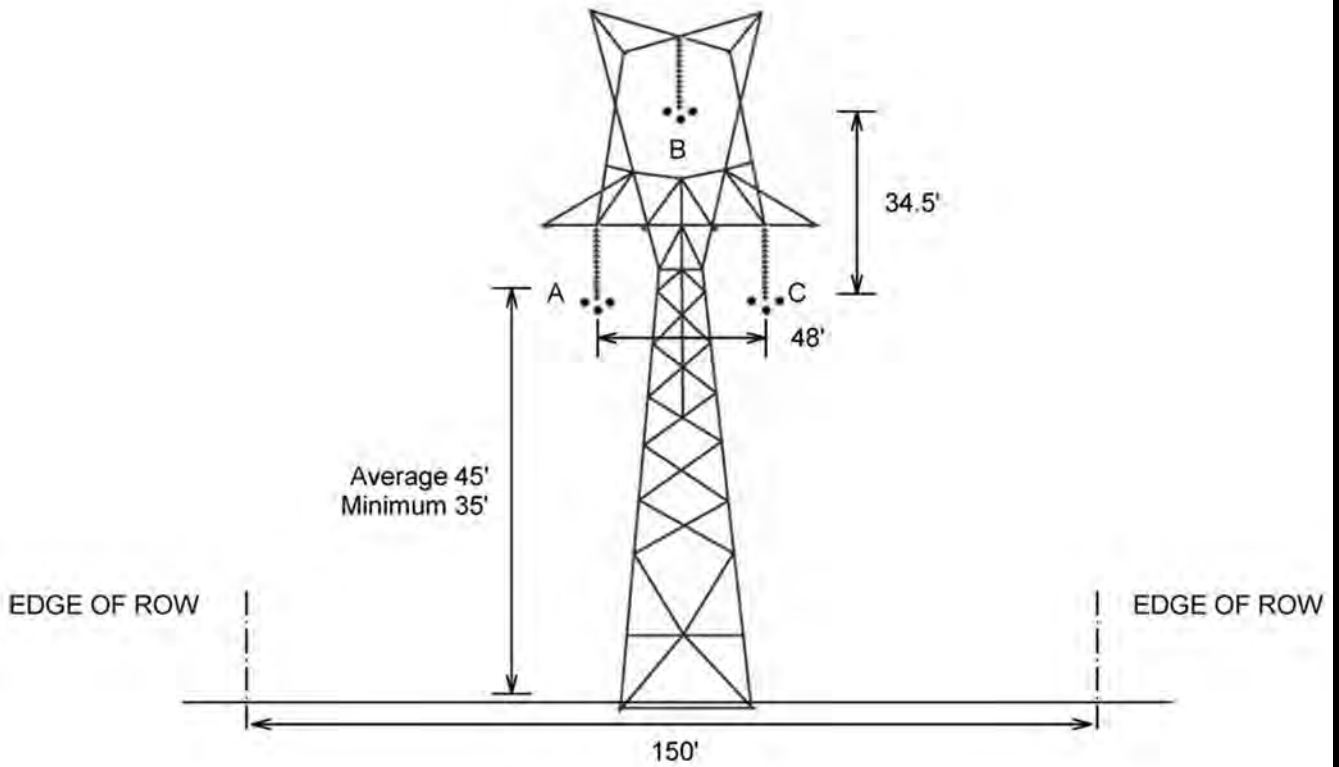


Wanapa Energy Center EIS

Figure 2.3-4

Proposed Action Electrical Transmission Line Route

Proposed Wanapa-McNary 500-kV Line
 Voltage: 540 kV (average), 550 kV (maximum)
 Peak current: 1445 (proposed)
 Conductors: 3 x 1.300 in., 17.04 in. spacing



**Wanapa Energy
Center EIS**

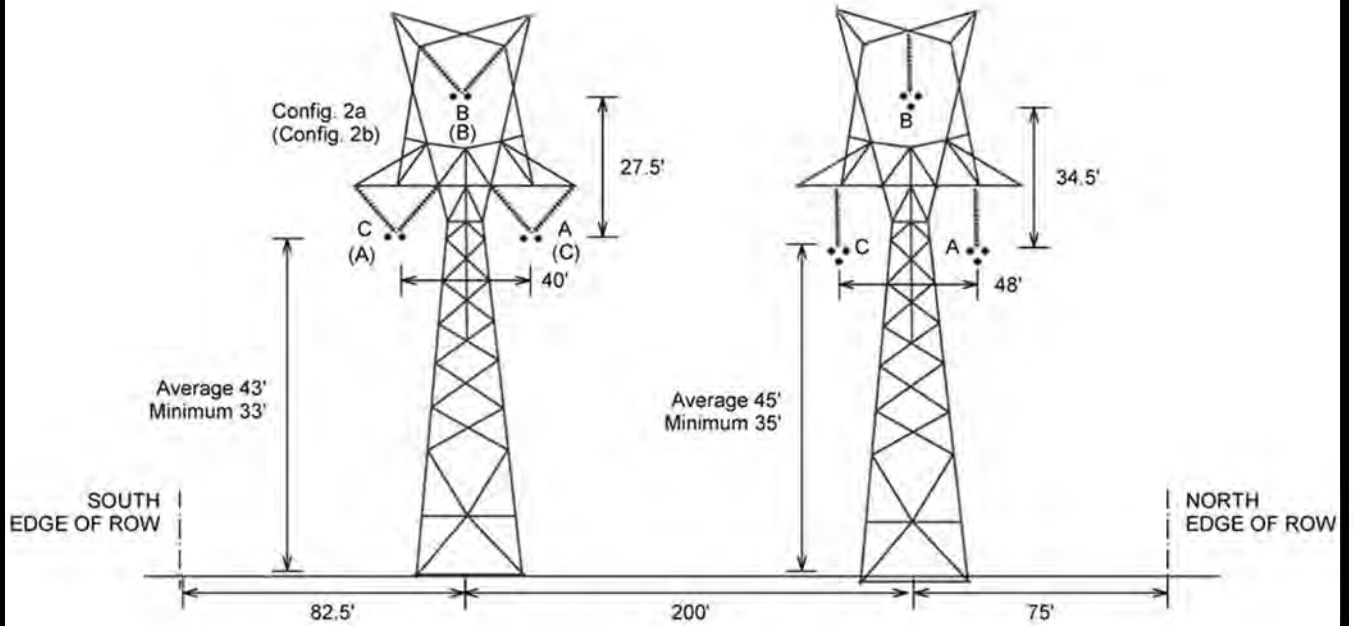
Figure 2.3-5

Configurations for the Proposed
Wanapa-McNary 500-kV Line
Proposed Line with No
Parallel Lines

Source: BPA, 2003.

Existing Lower Monumental-McNary 500-kV Line
 Voltage: 540-kV (average), 550-kV (maximum)
 Peak current: 1868/1532 A (existing/proposed)
 Conductors: 2 x 1.602 in., 18 in. spacing

Proposed Wanapa-McNary 500-kV Line
 Voltage: 540 kV (average), 550 kV (maximum)
 Peak current: 1445 (proposed)
 Conductors: 3 x 1.300 in., 17.04 in. spacing



**Wanapa Energy
Center EIS**

Figure 2.3-6

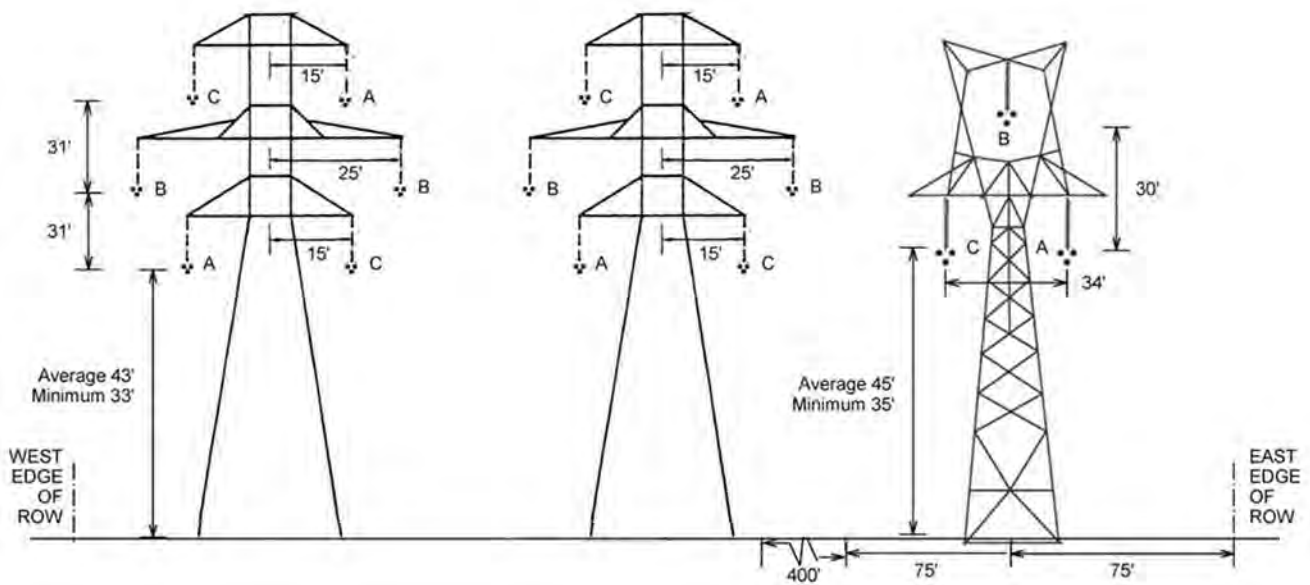
Configurations for the Proposed
Wanapa-McNary 500-kV Line
Proposed Line with One
Parallel Line

Source: BPA, 2003.

Existing McNary-Coyote (Slatt)/
 Calpine-McNary 500-kV Double-Circuit
 Voltage: 540-kV (average), 550-kV (maximum)
 Peak current: -1733/591 A (existing)
 -1803/591 A (proposed)
 Conductors: 3 x 1.302 in., 17.04 in. spacing

Alternative 1 BPA 500-kV line with
 relocated Lower Monumental-McNary 500-kV Line
 Voltage: 540-kV (average), 550-kV (maximum)
 Peak current: 1532 A (proposed)
 Conductors: 3 x 1.300 in., 17.04 in. spacing

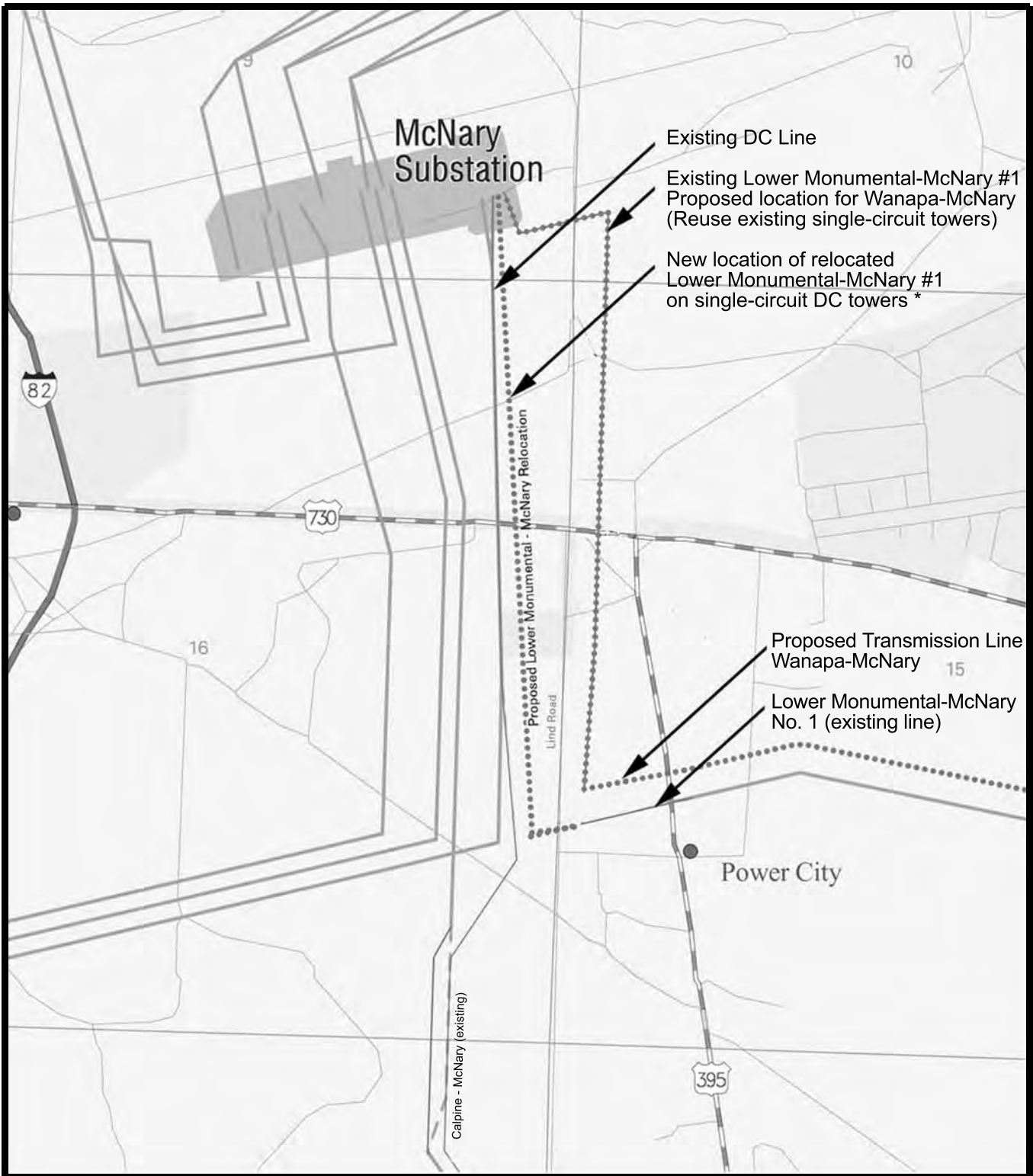
Replacement of Lower Monumental-McNary 500-kV Line with
 Proposed Wanapa-McNary 500-kV Line
 Voltage: 540-kV (average), 550-kV (maximum)
 Peak current: 1868/1445 A (existing/proposed)
 Conductors: 3 x 1.302 in., 17.04 in. spacing



**Wanapa Energy
 Center EIS**

Figure 2.3-7(a)
 Configurations for Alternative 1
 Wanapa-McNary
 500-kV Line Proposed Line
 with Two Parallel Lines

Source: BPA, 2003.



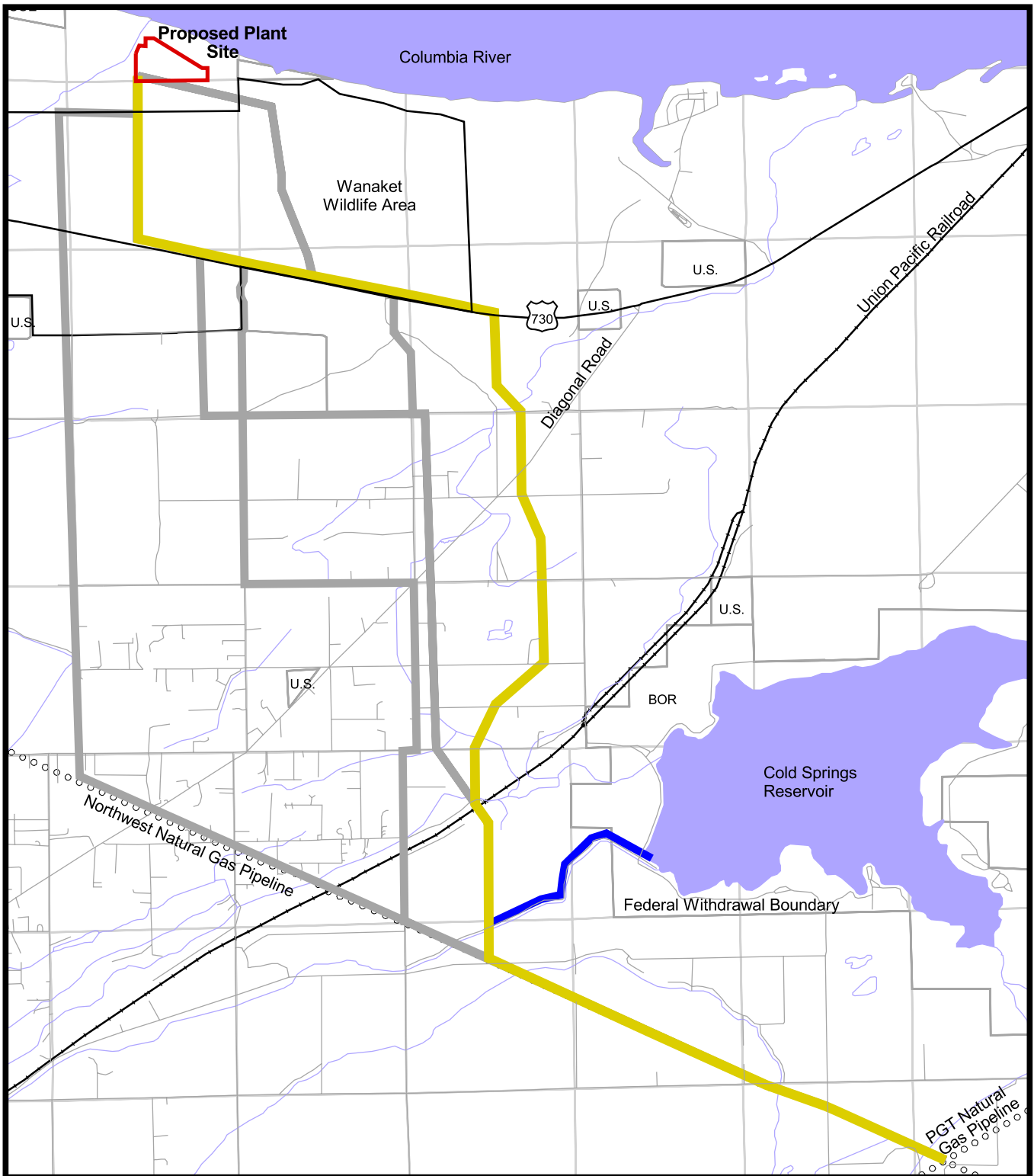
* See page 2.4.2 for description of optional transmission structure for Proposed Action and Line Alternative 1.

Wanapa Energy Center EIS



Figure 2.3-8

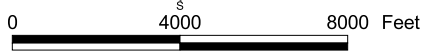
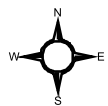
Electrical Transmission Line Modifications at McNary Substation to Accommodate the Wanapa Energy Center Project

Source: BPA, 2003.



Legend

-  Alternative 1 Natural Gas Supply and Plant Discharge Water Pipelines
-  Plant Discharge Water Lateral Pipeline

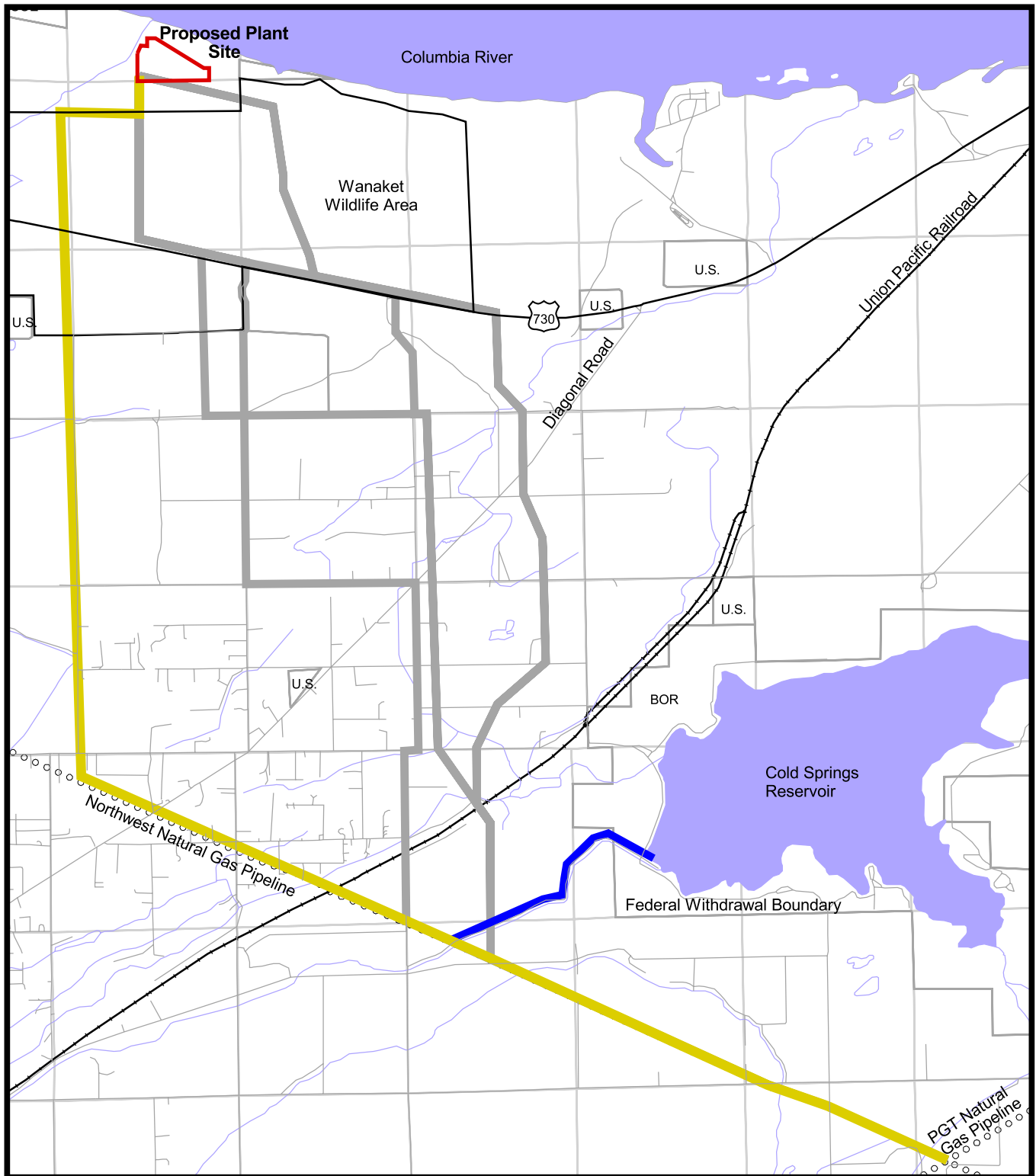


Source: ENSR, 2003.



Wanapa Energy Center EIS

Figure 2.4-1

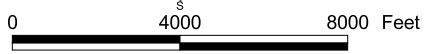
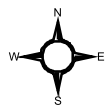
Alternative 1 Natural Gas Supply/Plant Discharge Water Pipeline Routes



Legend

-  Alternative 1 Natural Gas Supply and Plant Discharge Water Pipelines
-  Plant Discharge Water Lateral Pipeline

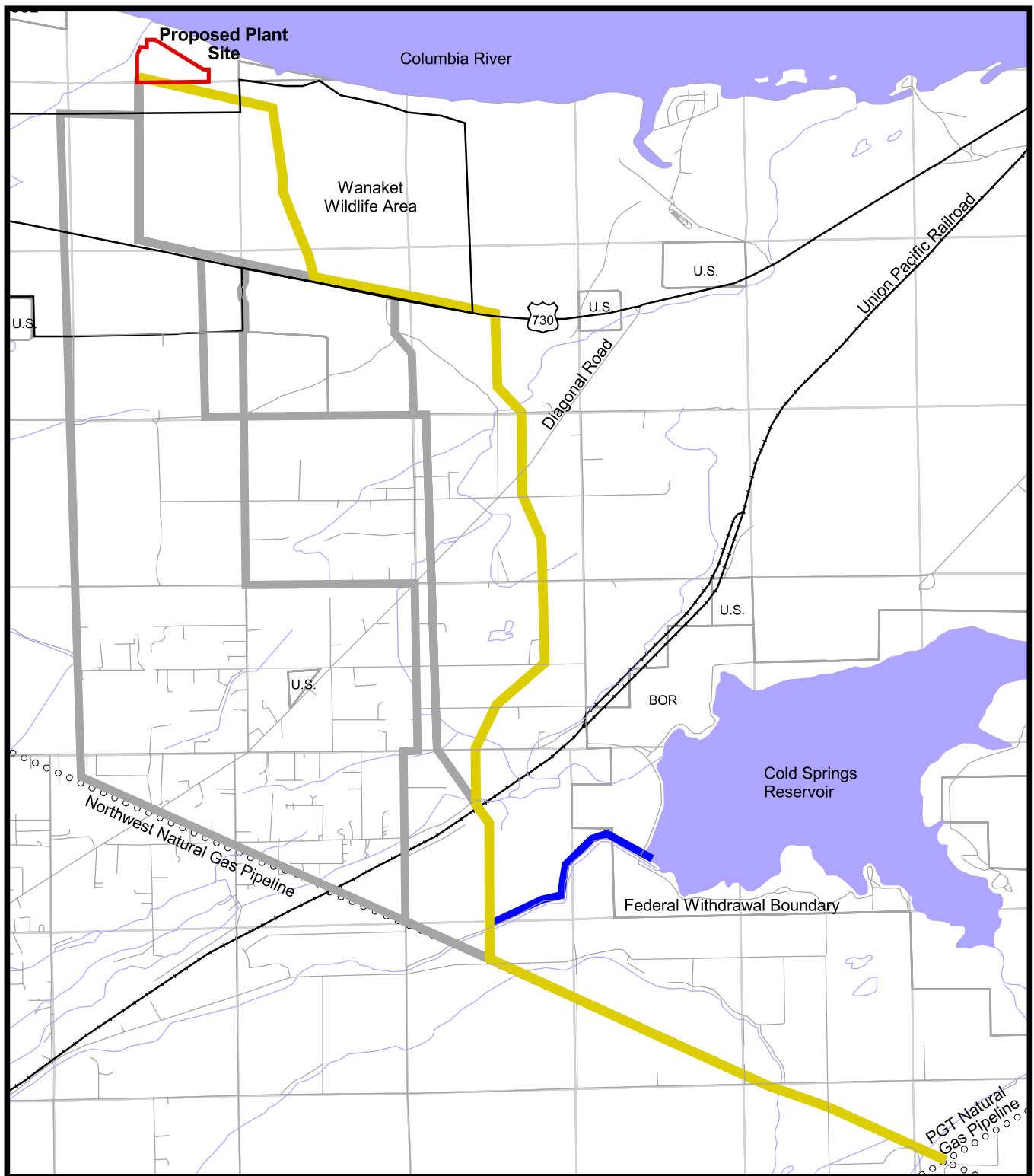
Source: ENSR, 2003.





Wanapa Energy Center EIS

Figure 2.4-2

Alternative 2 Natural Gas Supply/Plant Discharge Water Pipeline Routes



Legend

-  Alternative 1 Natural Gas Supply and Plant Discharge Water Pipelines
-  Plant Discharge Water Lateral Pipeline



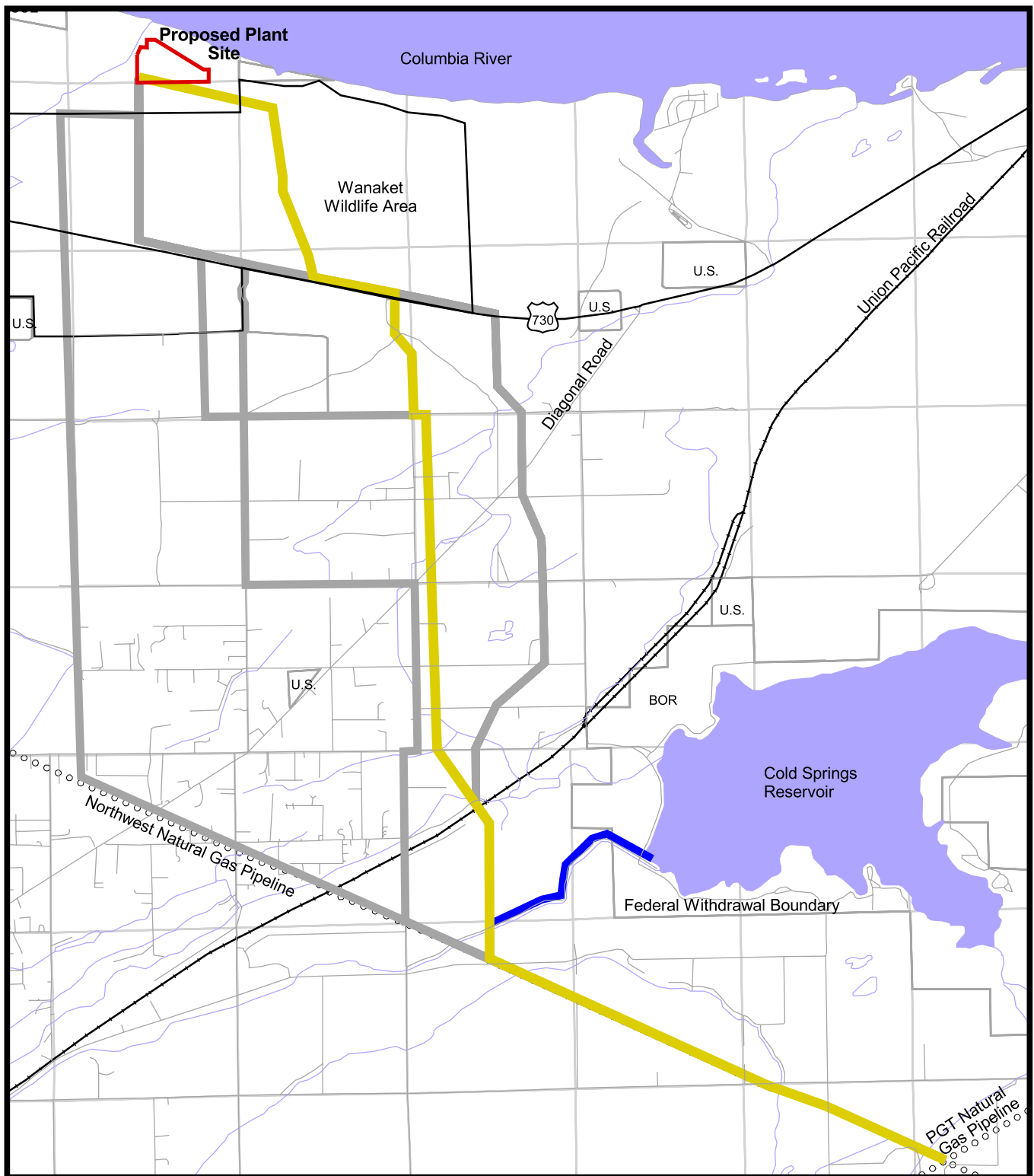
0 4000 8000 Feet

Source: ENSR, 2003.



Wanapa Energy Center EIS

Figure 2.4-3

Alternative 3 Natural Gas Supply/Plant Discharge Water Pipeline Routes



Legend

-  Alternative 1 Natural Gas Supply and Plant Discharge Water Pipelines
-  Plant Discharge Water Lateral Pipeline



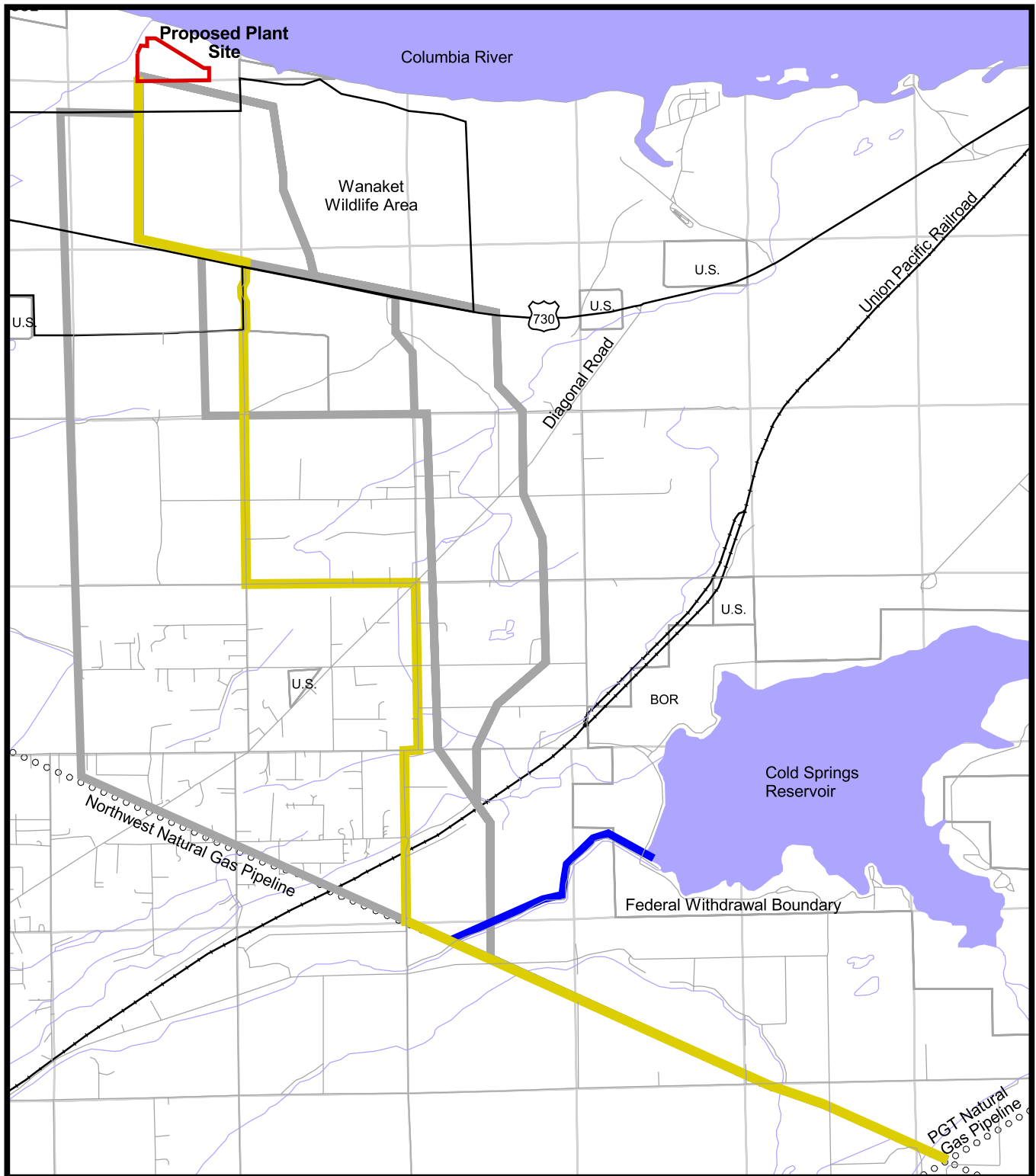
0 4000 8000 Feet

Source: ENSR, 2003.



Wanapa Energy Center EIS

Figure 2.4-4

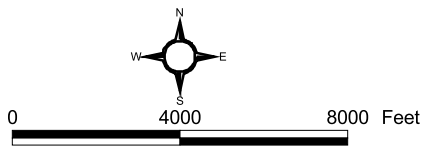
Alternative 4 Natural Gas Supply/Plant Discharge Water Pipeline Routes



Legend

-  Alternative 1 Natural Gas Supply and Plant Discharge Water Pipelines
-  Plant Discharge Water Lateral Pipeline

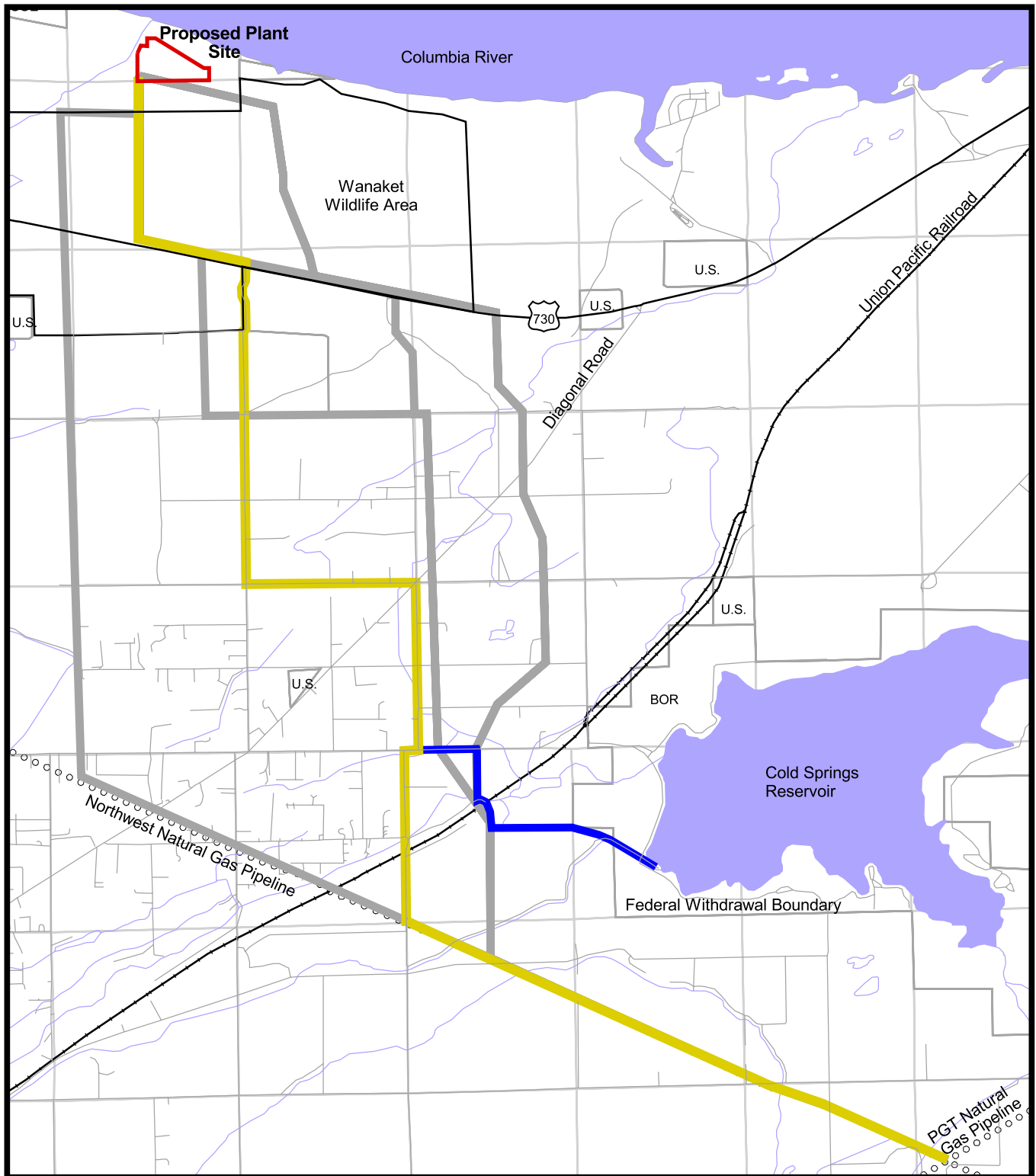
Source: ENSR, 2003.





Wanapa Energy Center EIS

Figure 2.4-5

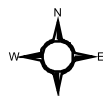
Alternative 5 Natural Gas Supply/Plant Discharge Water Pipeline Routes



Legend

-  Alternative 1 Natural Gas Supply and Plant Discharge Water Pipelines
-  Plant Discharge Water Lateral Pipeline

Source: ENSR, 2003.

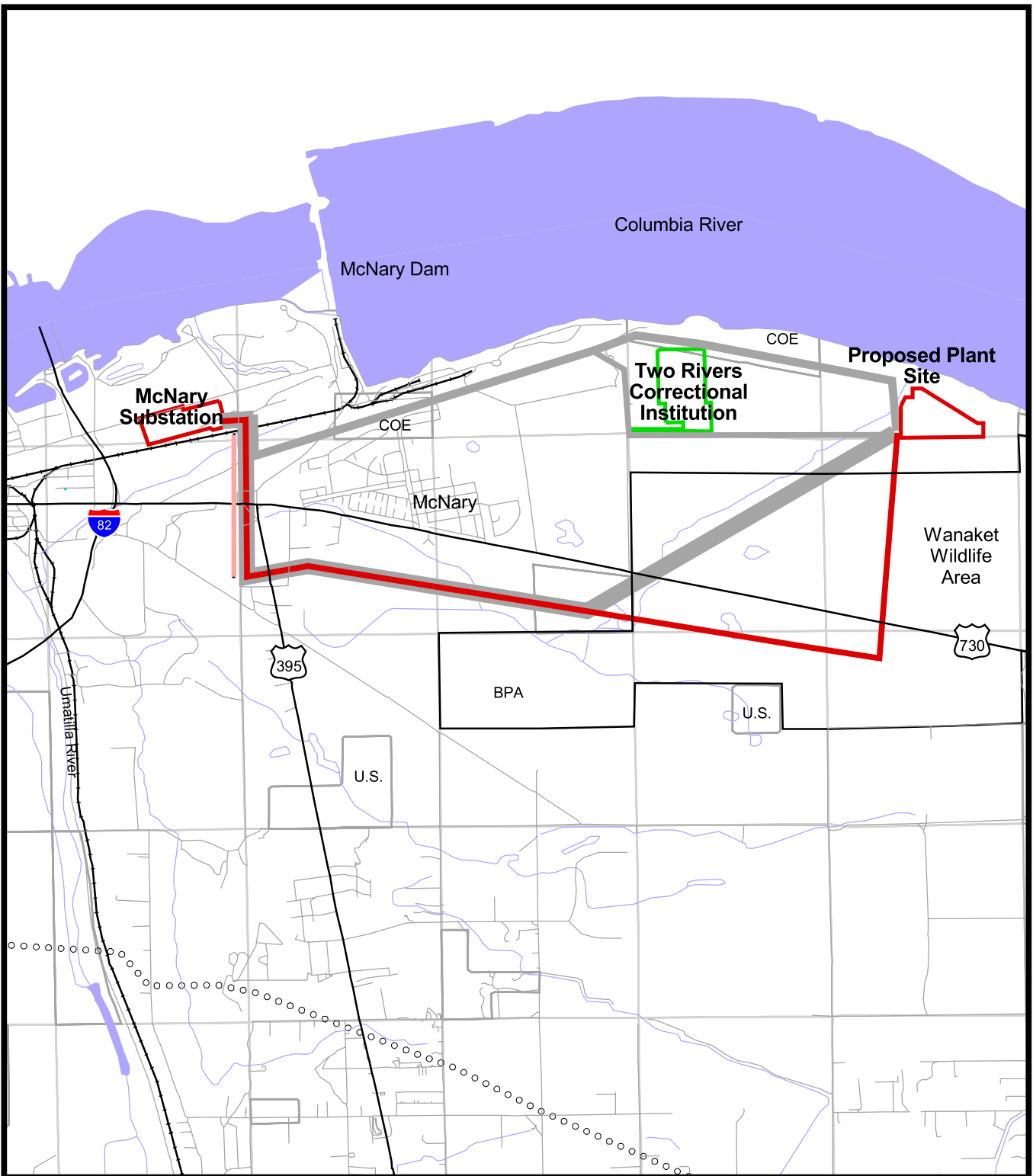


0 4000 8000 Feet



Wanapa Energy Center EIS

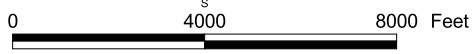
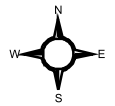
Figure 2.4-6

Alternative 6 Natural Gas Supply/Plant Discharge Water Pipeline Routes



Legend

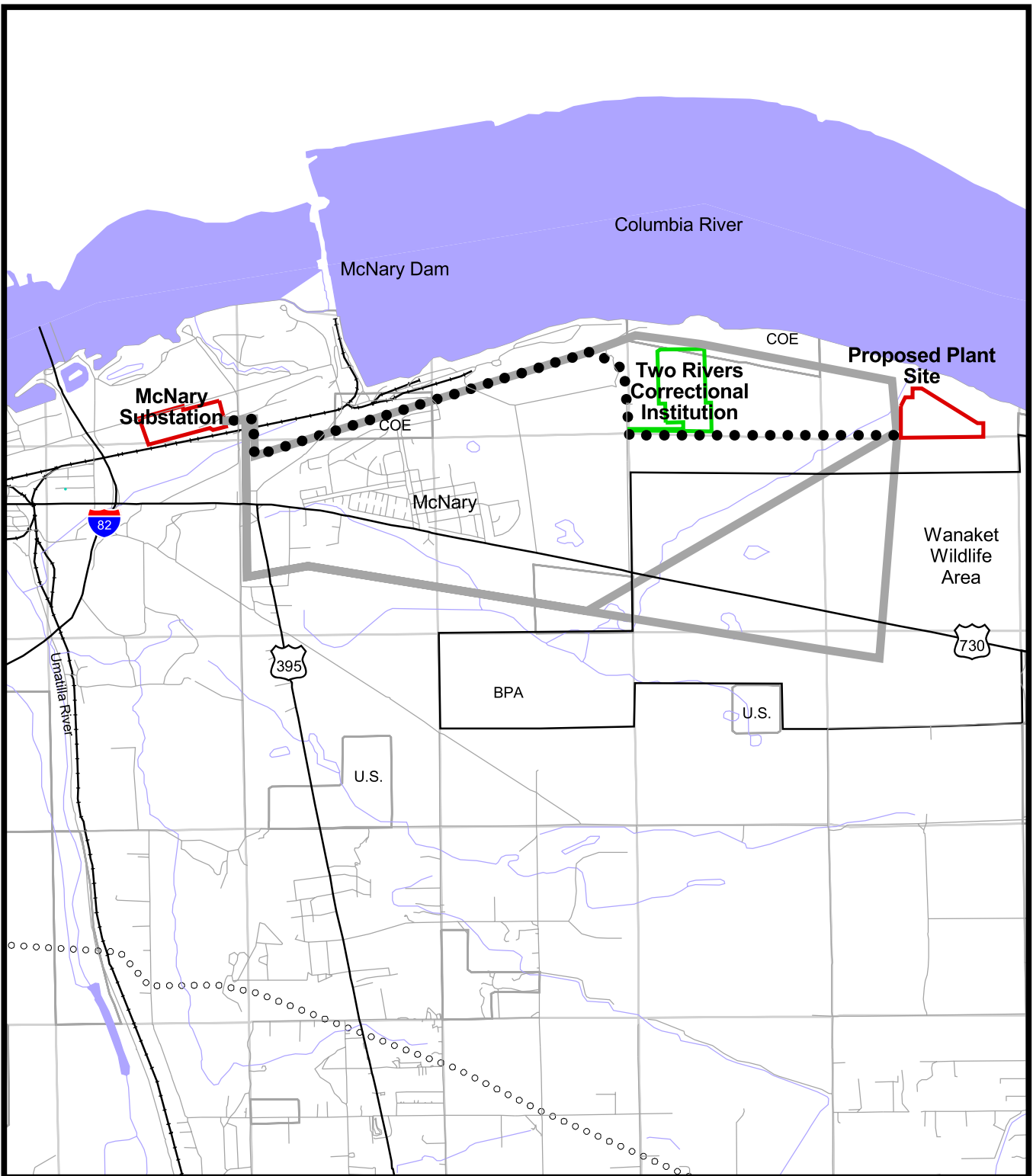
-  Single Circuit Electric Transmission Line
-  Lower Monumental-McNary Transmission Line Relocation




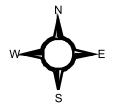
Wanapa Energy Center EIS

Figure 2.4-7

Alternative 1 Electrical Transmission Line Route



Legend
 Single circuit line (4.0 mi.)



0 4000 8000 Feet

Wanapa Energy Center EIS

Figure 2.4-8

Alternative 2 Electrical Transmission Line Route

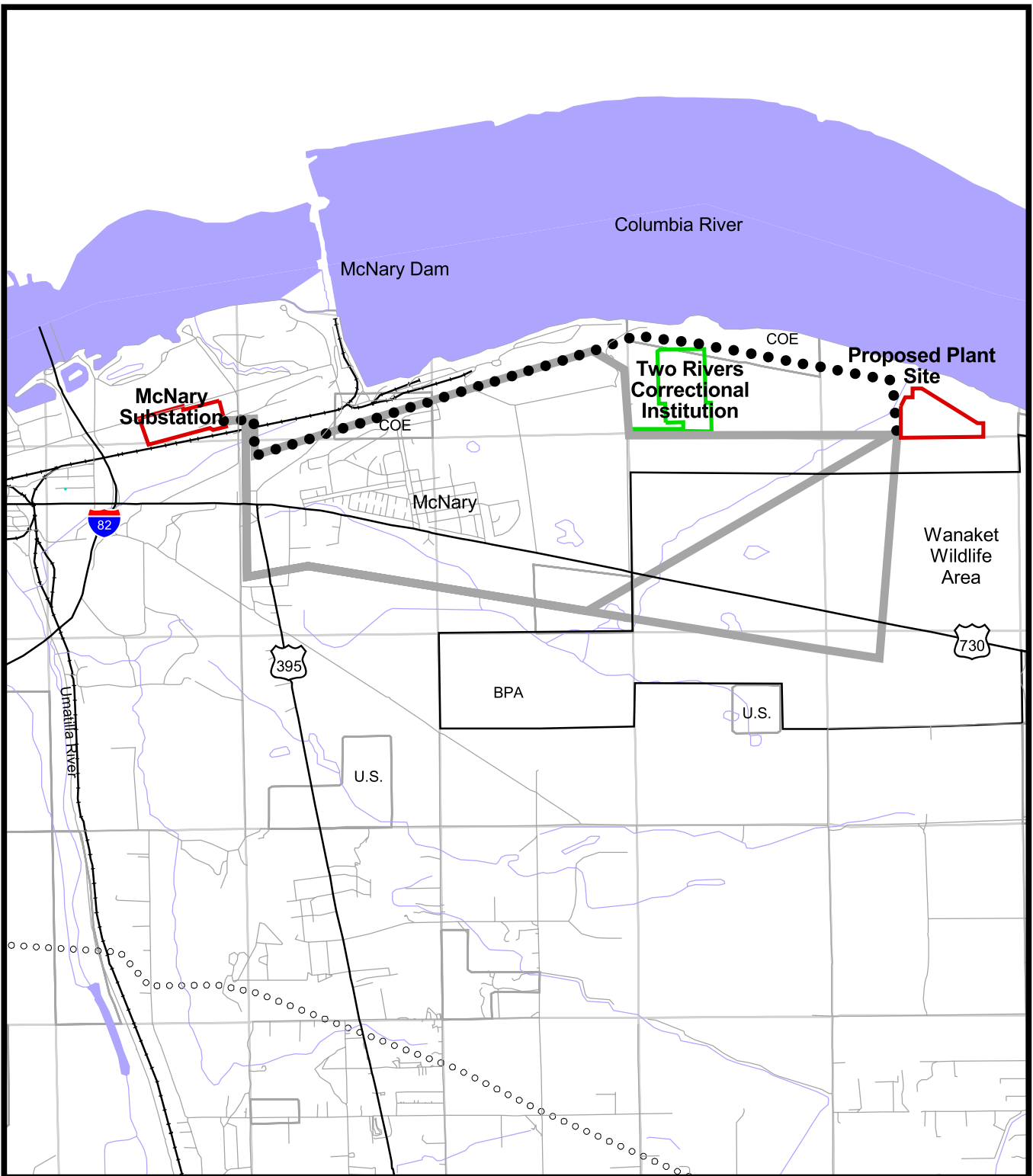


STRUCTURE TYPE	Single circuit 500 kV tubular
RIGHT-OF-WAY WIDTH	150 feet
AREA OF BASE	100 square feet
TYPICAL HEIGHT	135 feet
NUMBER OF STRUCTURES PER MILE (APPROX.)	4.8

Wanapa Energy Center EIS

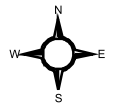
Figure 2.4-9
Single Shaft Steel Pole
Electrical Transmission
Structure

Source: BPA, 2003.



Legend

●● Single circuit line (3.7 mi.)

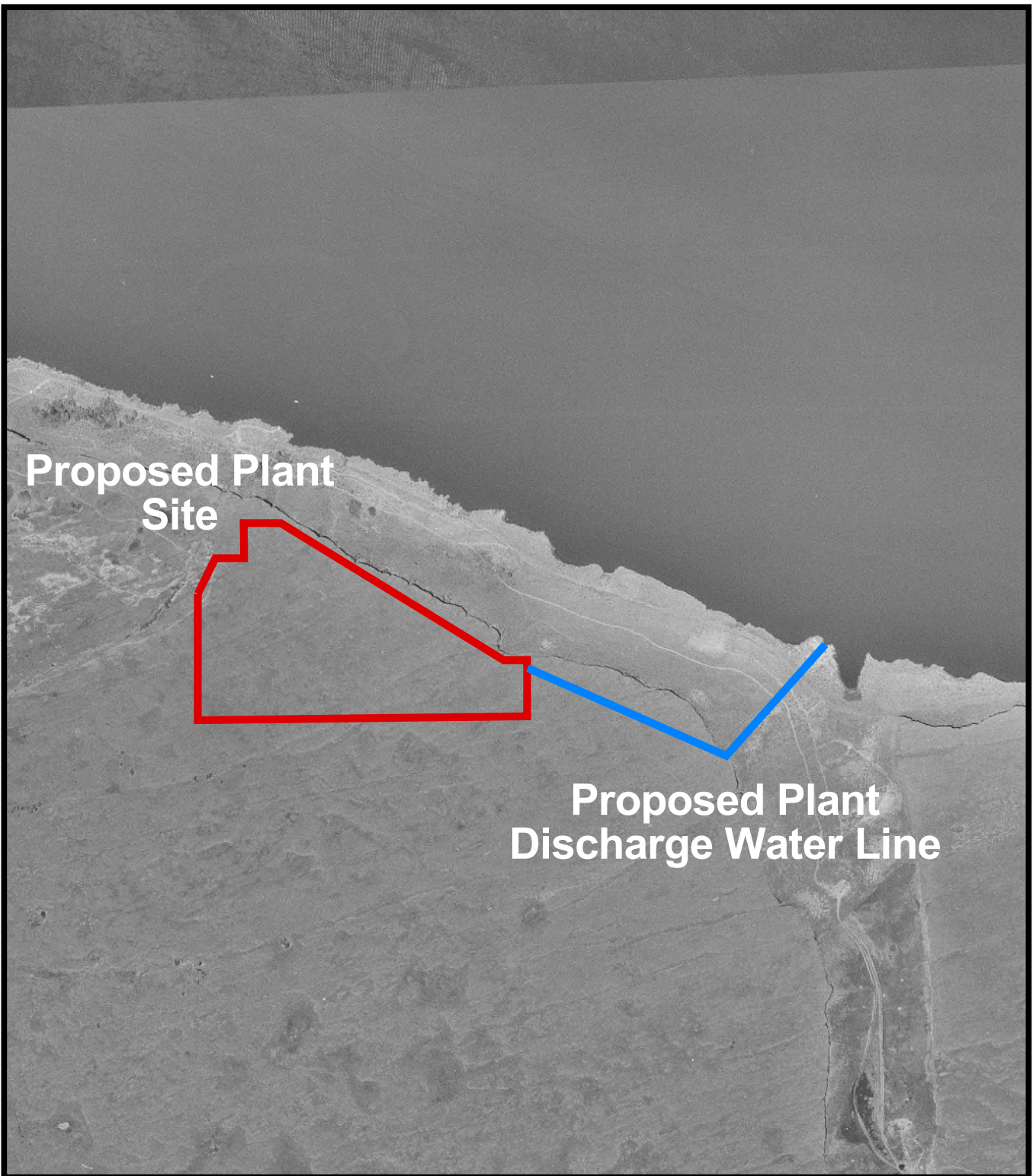


0 4000 8000 Feet



Wanapa Energy Center EIS

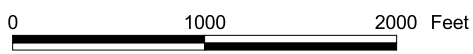
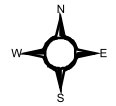
Figure 2.4-10

Alternative 3 Electrical Transmission Line Route



Legend

-  Plant Water Discharge Line
-  Proposed Plant Site

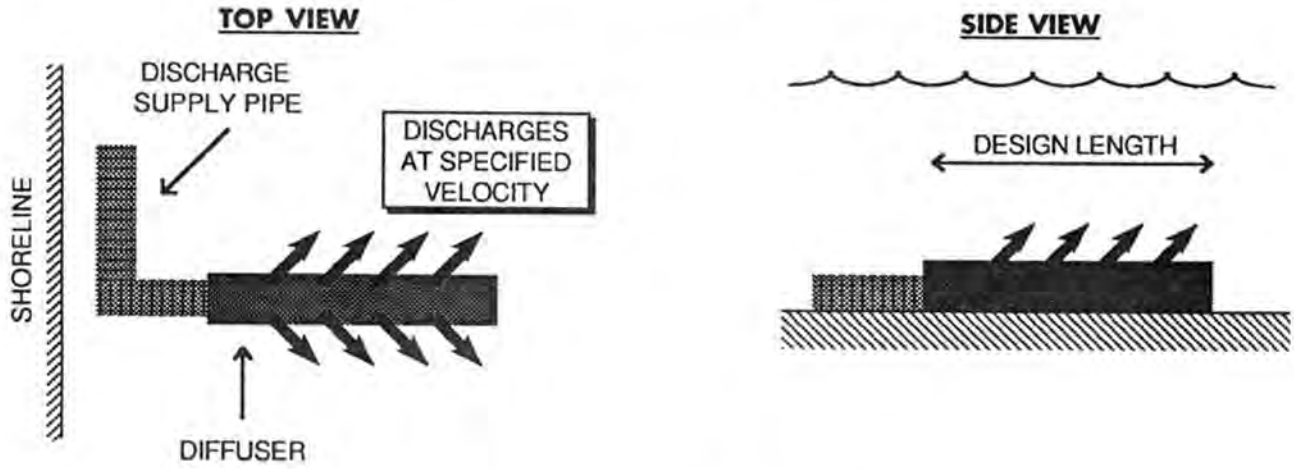


Wanapa Energy Center EIS

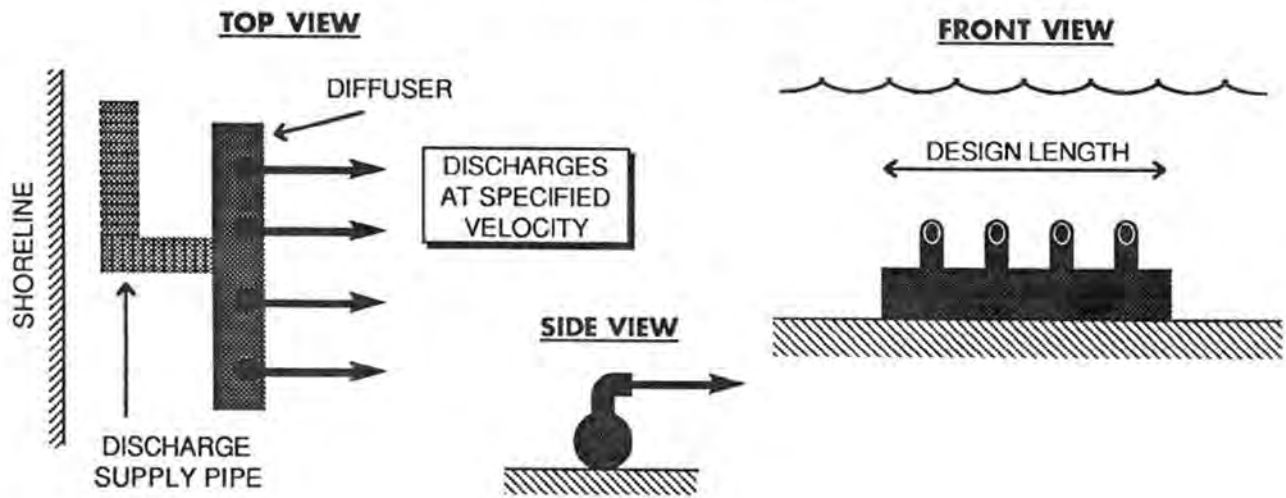
Figure 2.4-11

Plant Discharge Water Line

SUBMERGED STAGED DIFFUSER

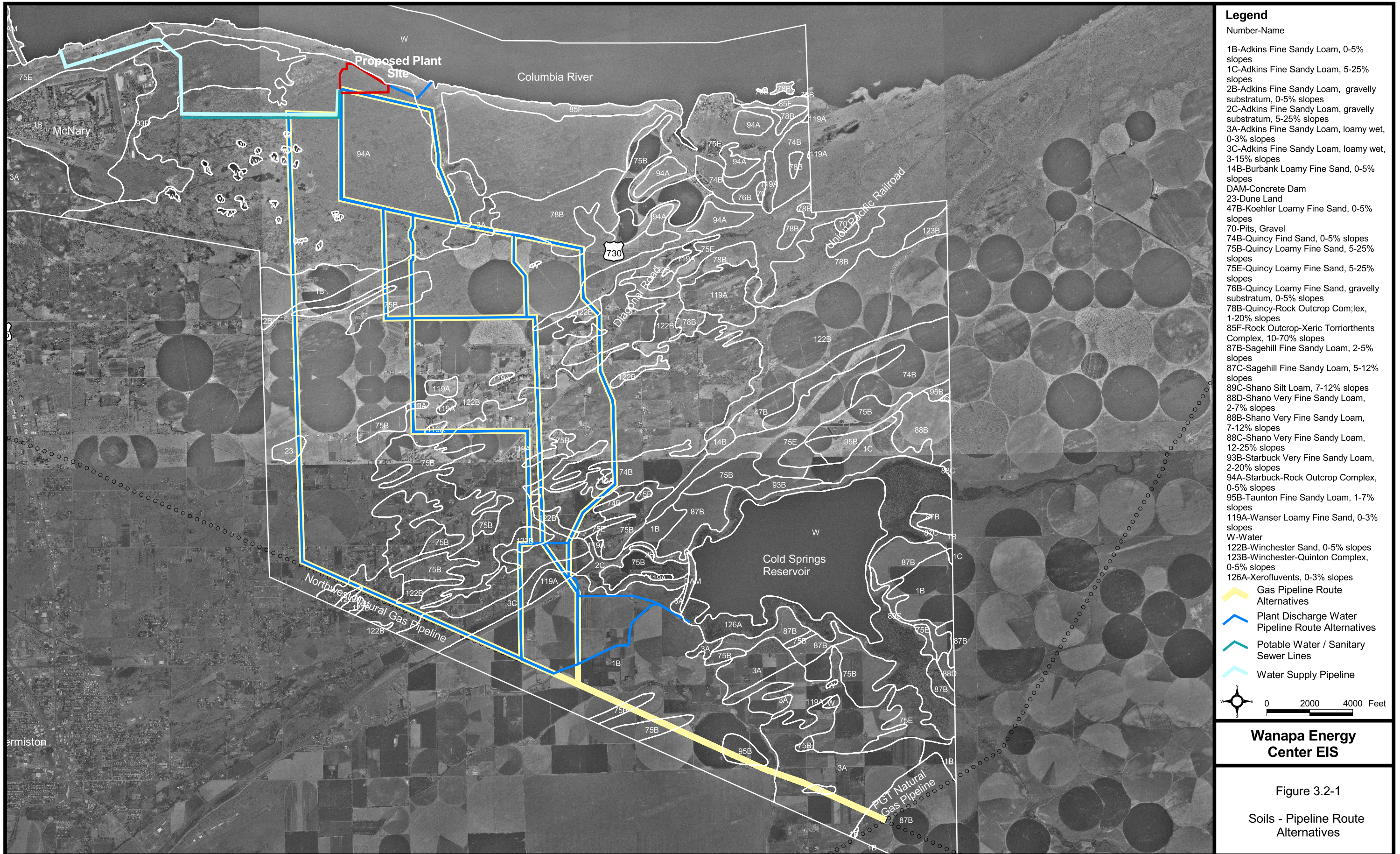


SUBMERGED TEE DIFFUSER



Wanapa Energy
Center EIS

Figure 2.4-12
Typical Diffuser Designs



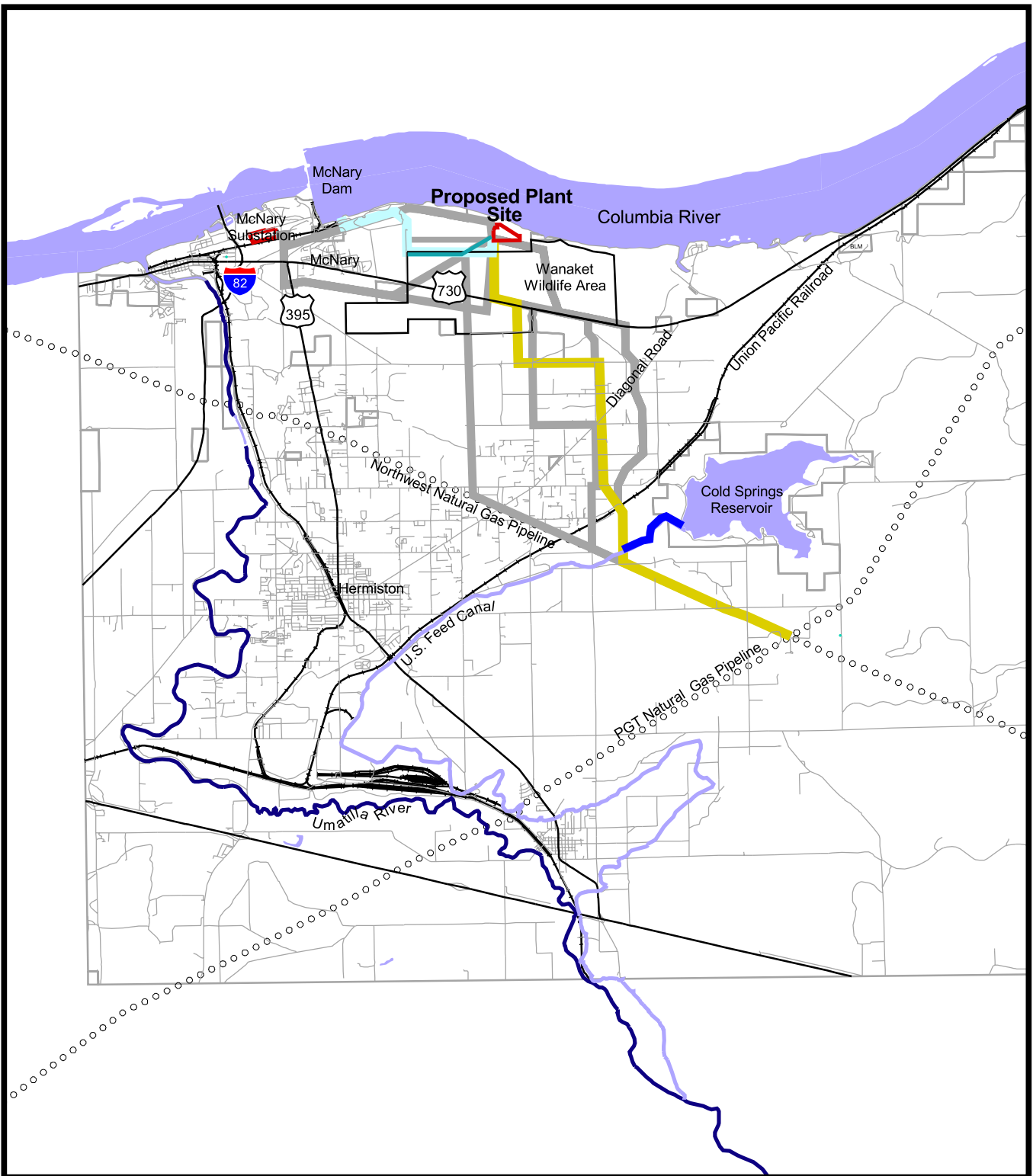
Legend

- Number-Name
- 1B-Adkins Fine Sandy Loam, 0-5% slopes
- 1C-Adkins Fine Sandy Loam, 5-25% slopes
- 2B-Adkins Fine Sandy Loam, gravelly substratum, 0-5% slopes
- 2C-Adkins Fine Sandy Loam, gravelly substratum, 5-25% slopes
- 3A-Adkins Fine Sandy Loam, loamy wet, 0-3% slopes
- 3C-Adkins Fine Sandy Loam, loamy wet, 3-15% slopes
- 14B-Burbank Loamy Fine Sand, 0-5% slopes
- DAM-Concrete Dam
- 23-Dune Land
- 47B-Koehler Loamy Fine Sand, 0-5% slopes
- 70-Pits, Gravel
- 74B-Quincy Find Sand, 0-5% slopes
- 75B-Quincy Loamy Fine Sand, 5-25% slopes
- 75E-Quincy Loamy Fine Sand, 5-25% slopes
- 76B-Quincy Loamy Fine Sand, gravelly substratum, 0-5% slopes
- 78B-Quincy-Rock Outcrop Complex, 1-20% slopes
- 85F-Rock Outcrop-Xeric Torriorthents Complex, 10-70% slopes
- 87B-Sagehill Fine Sandy Loam, 2-5% slopes
- 87C-Sagehill Fine Sandy Loam, 5-12% slopes
- 89C-Shano Silt Loam, 7-12% slopes
- 88D-Shano Very Fine Sandy Loam, 2-7% slopes
- 88B-Shano Very Fine Sandy Loam, 7-12% slopes
- 88C-Shano Very Fine Sandy Loam, 12-25% slopes
- 93B-Starbuck Very Fine Sandy Loam, 2-20% slopes
- 94A-Starbuck-Rock Outcrop Complex, 0-5% slopes
- 95B-Taunton Fine Sandy Loam, 1-7% slopes
- 119A-Wanser Loamy Fine Sand, 0-3% slopes
- W-Water
- 122B-Winchester Sand, 0-5% slopes
- 123B-Winchester-Quinton Complex, 0-5% slopes
- 126A-Xerofluvents, 0-3% slopes
- Gas Pipeline Route Alternatives
- Plant Discharge Water Pipeline Route Alternatives
- Potable Water / Sanitary Sewer Lines
- Water Supply Pipeline







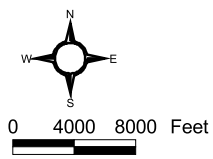
Wanapa Energy Center EIS

Figure 3.2-1
Soils - Pipeline Route Alternatives



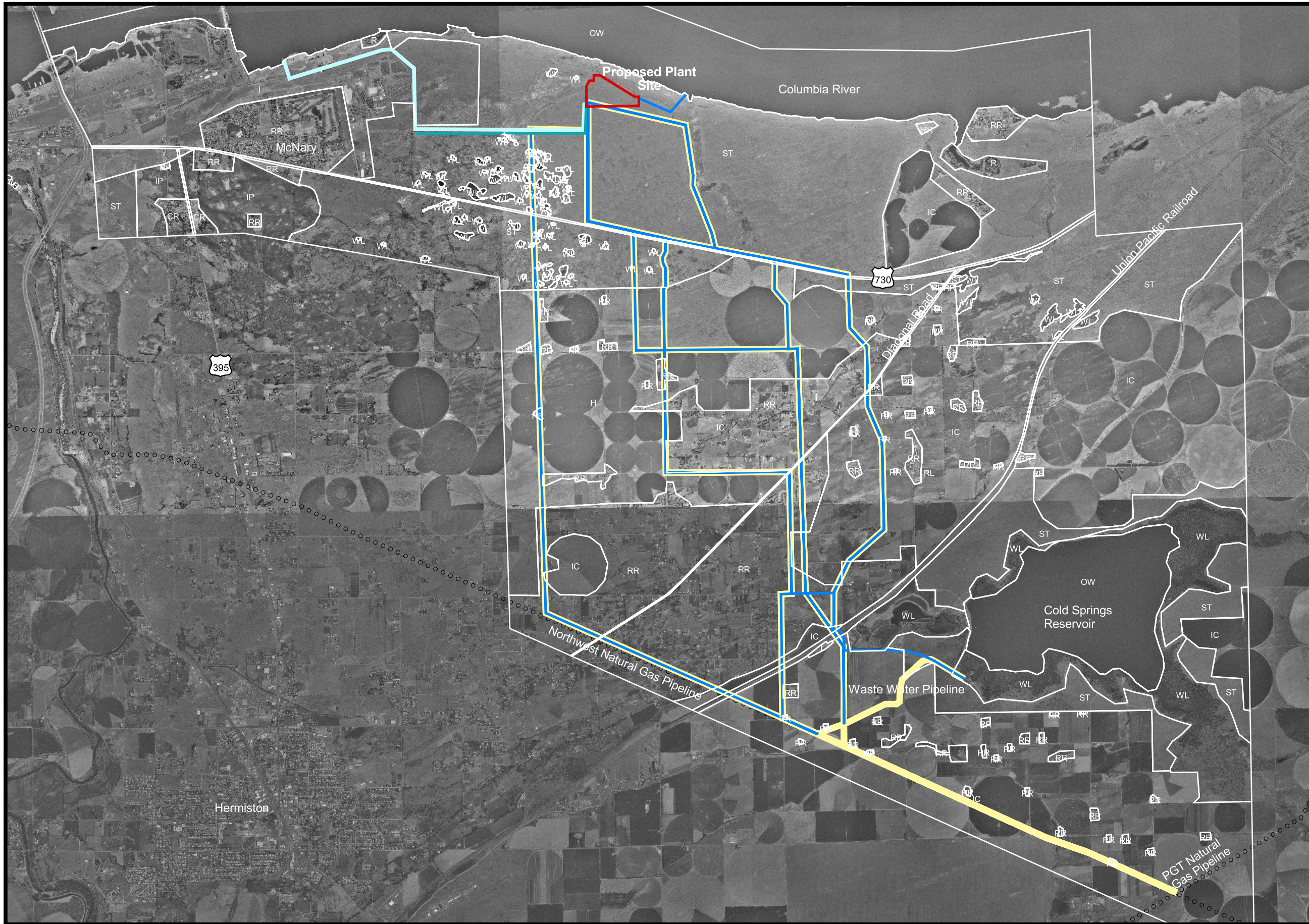
Legend

-  Natural Gas and Plant Discharge Water Pipelines
-  Plant Discharge Water Lateral Pipeline
-  Potable Water / Sanitary Sewer Lines
-  Water Supply Pipeline



Wanapa Energy Center EIS

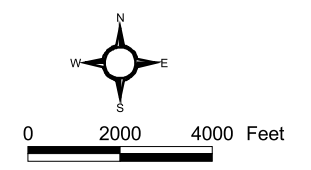
Figure 3.3-1
Surface Water Systems



Legend

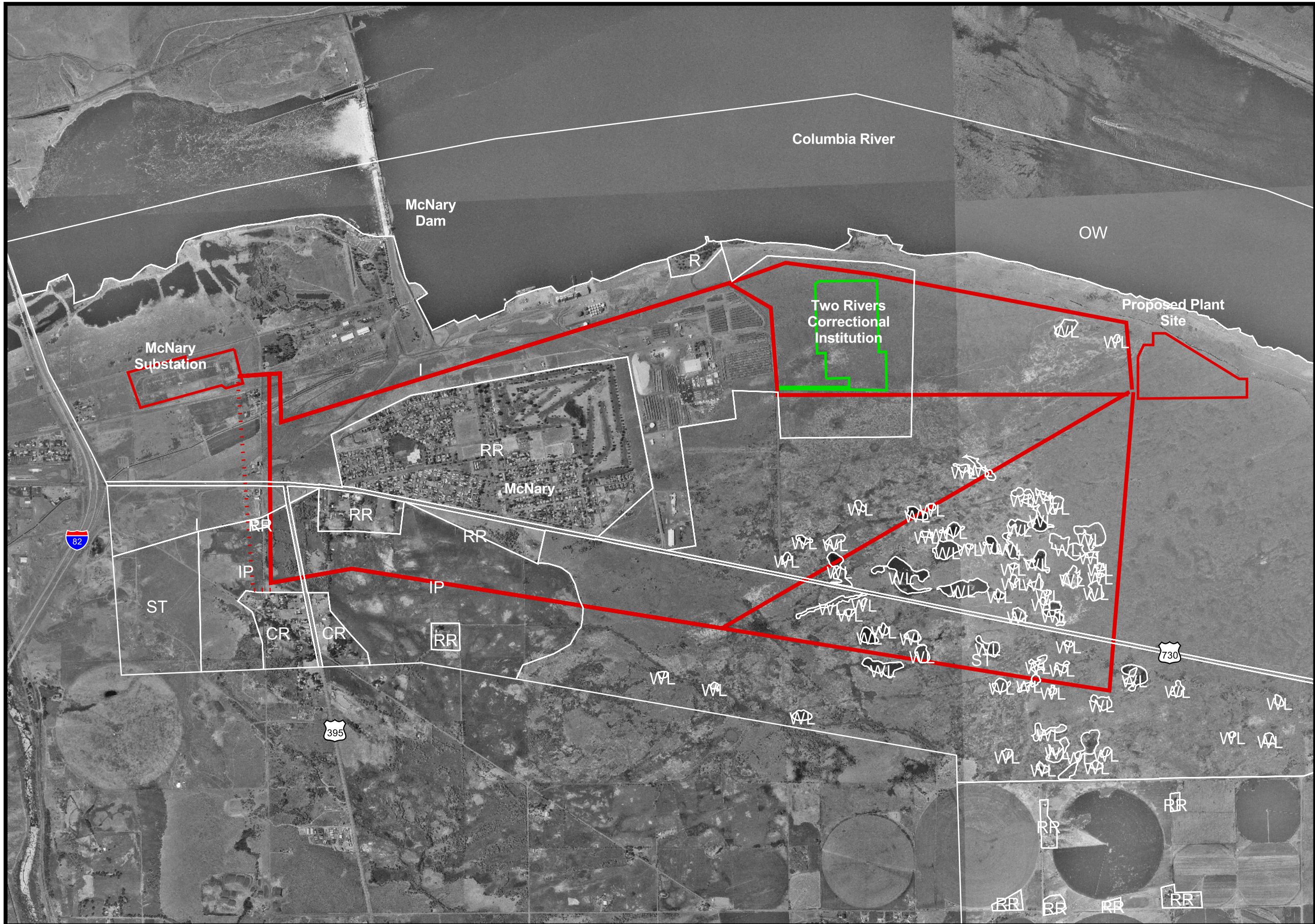
Abbreviation-Name
 CR - Commercial & Residential
 H - Highway
 I - Industrial
 IC - Irrigated Cropland
 IP - Irrigated Pasture
 OW - Water
 R - Recreation
 RL - Railroad
 RR - Rural Residential
 ST - Shrub Steppe
 WL - Wetland

Gas Pipeline Route Alternatives
 Plant Discharge Water Pipeline Route Alternatives
 Potable Water / Sanitary Sewer Lines
 Water Supply Pipeline



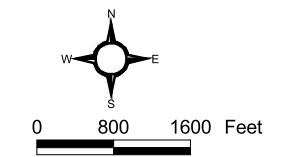
Wanapa Energy Center EIS

Figure 3.4-1
 Land Cover - Pipeline Route Alternatives



Legend

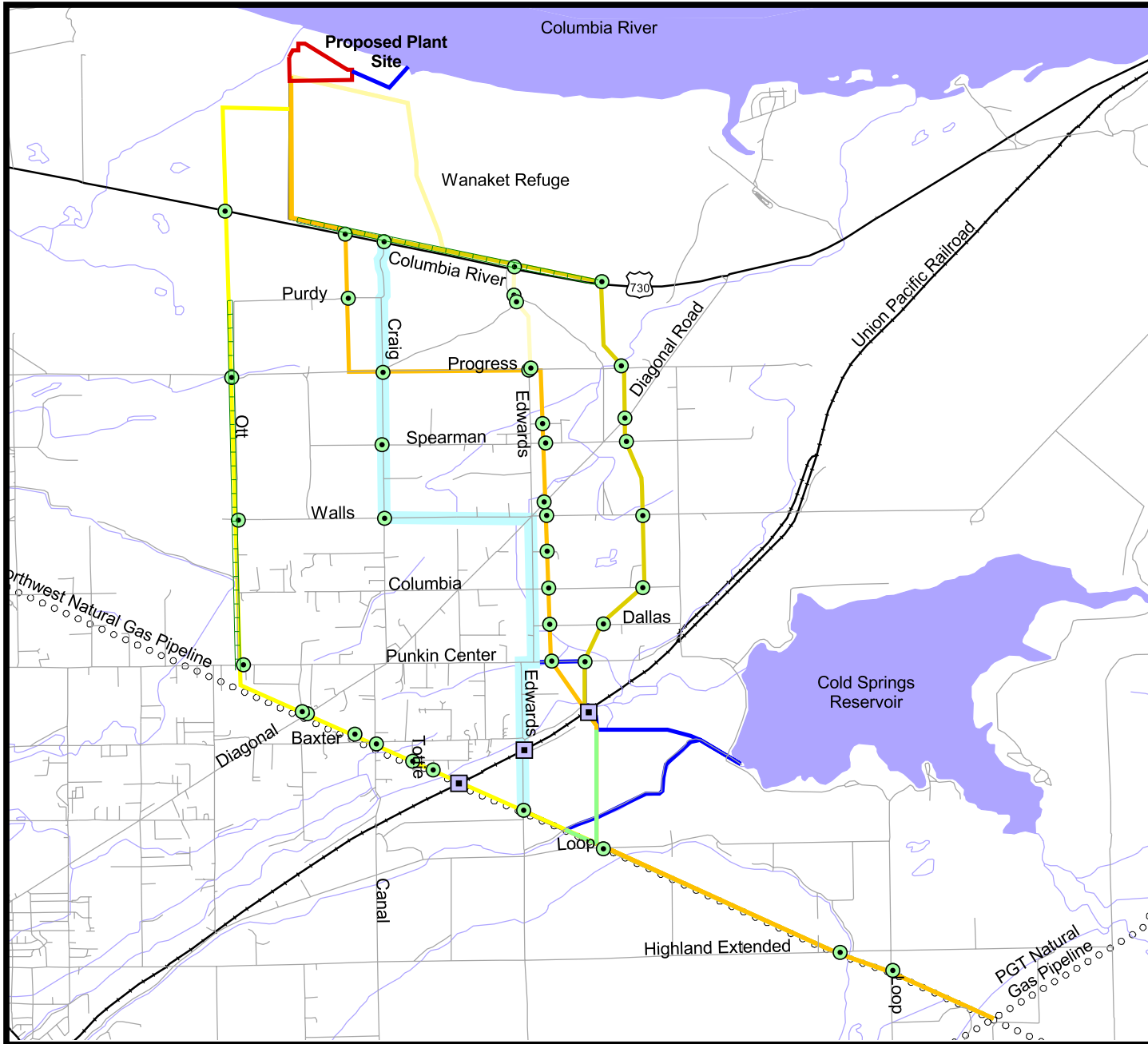
- Abbreviation-Name
 CR - Commercial & Residential
 H - Highway
 I - Industrial
 IC - Irrigated Cropland
 IP - Irrigated Pasture
 OW - Water
 R - Recreation
 RL - Railroad
 RR - Rural Residential
 ST - Shrub Steppe
 WL - Wetland
- Transmission Line Route Alternatives
- Lower Monumental-McNary Transmission Line Relocation



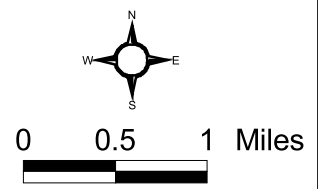
Wanapa Energy Center EIS

Figure 3.4-2
 Land Cover-Transmission Line Route Alternatives

3.6-6



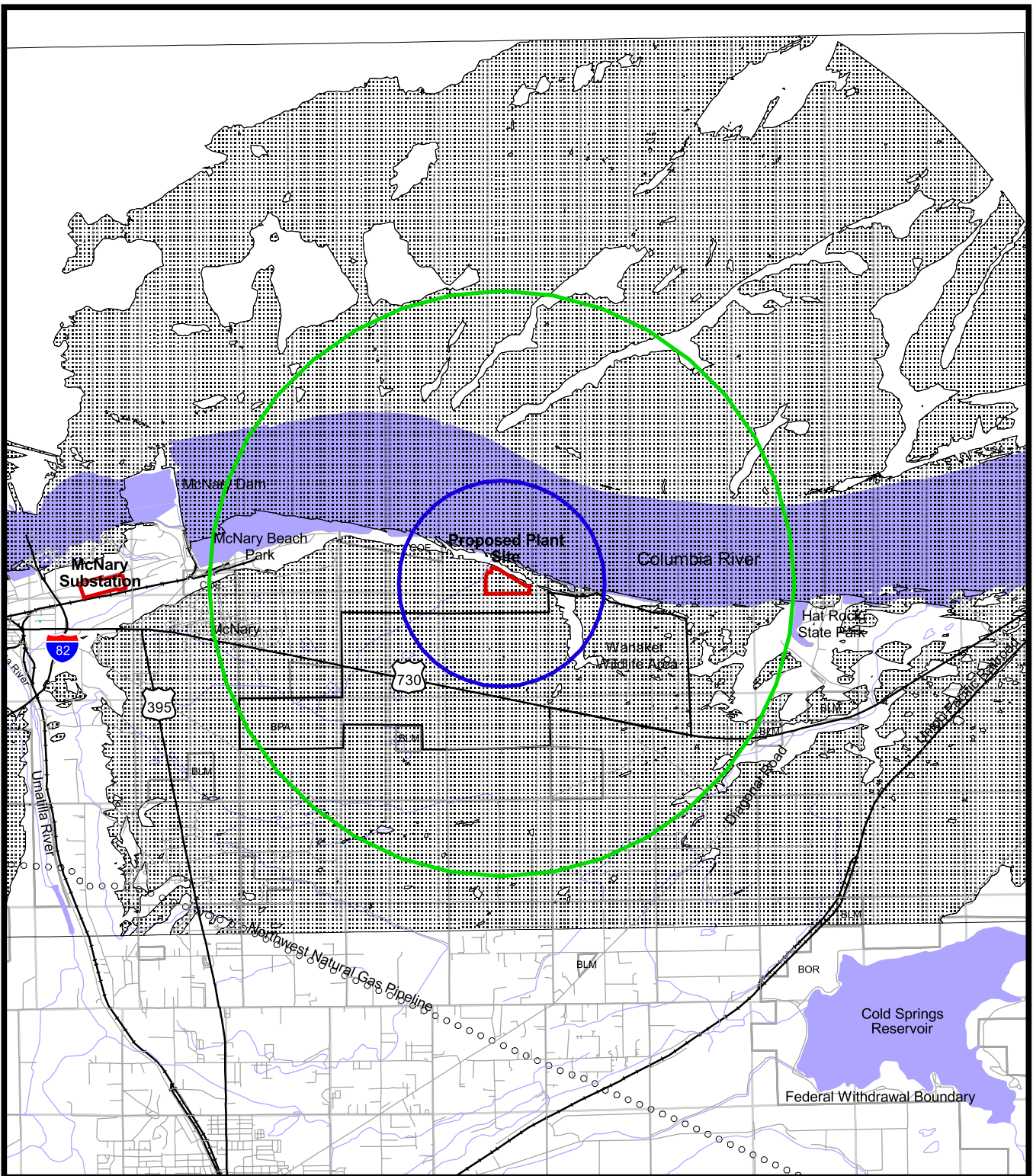
- Legend**
- Pipeline ROW Located Parallel to Road ROW
 - Railroad Crossing
 - Road Crossing
 - Pipeline ROW Located within Road ROW
 - Natural Gas / Plant Discharge Water Pipeline Alternative ROWs
 - Natural Gas Pipeline Alternative ROWs
 - Plant Discharge Water Pipeline Alternative ROWs
 - Channels
 - Railroads







Wanapa Energy Center EIS

Figure 3.6-1

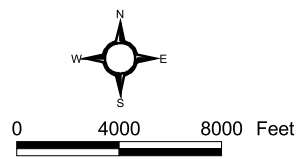
Pipeline Route Alternatives Interaction with Local Transportation System



Legend

-  The stacks are visible
-  The stacks are not visible
-  5,280 foot radius circle
-  15,000 foot radius circle

Source: ENSR, 2003.



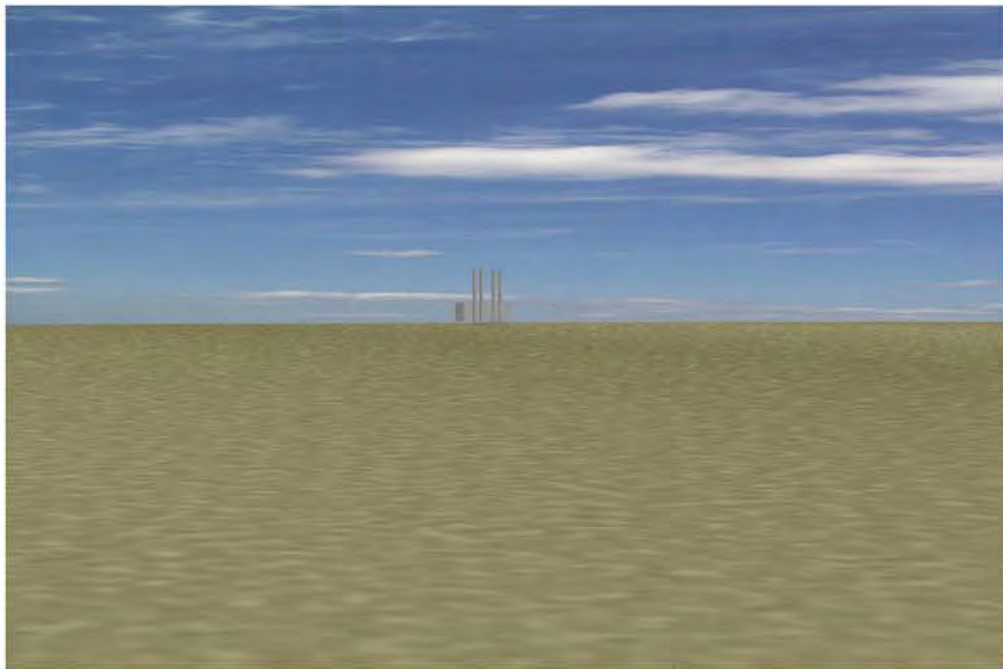
Wanapa Energy Center EIS

Figure 3.7-1

Visibility to Generating Facility Stacks



View of Generating Structures from 15,000 feet








View of Generating Structures from 5,280 feet

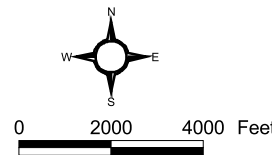
**Wanapa Energy
Center EIS**

Figure 3.7-2
Simulated Views of
Generating Facilities



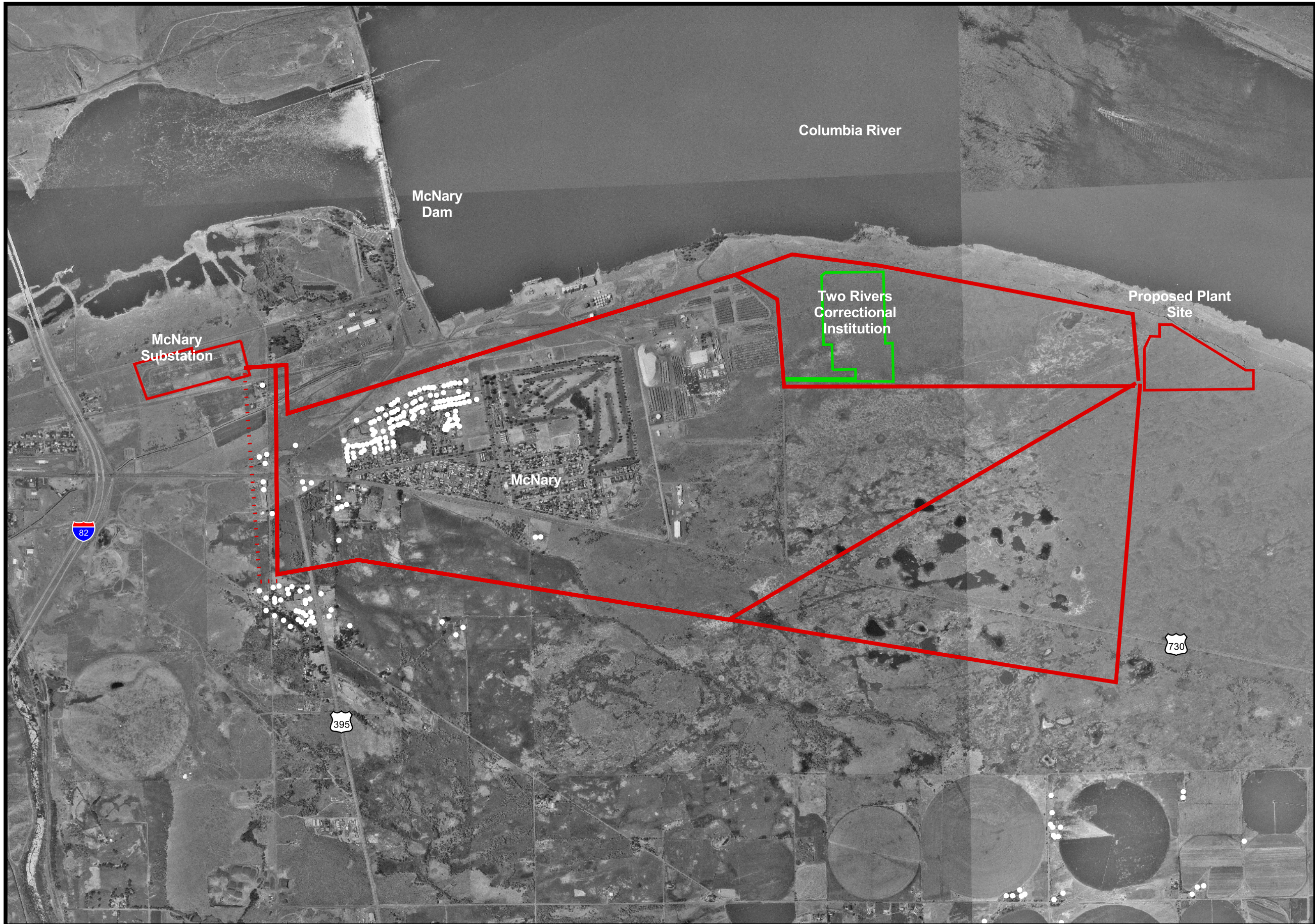
Legend

-  Location of structure within 1/4 mile of pipeline route alternatives
-  Gas Pipeline Route Alternatives
-  Plant Discharge Water Pipeline Route Alternatives
-  Potable Water / Sanitary Sewer Lines
-  Water Supply Pipeline



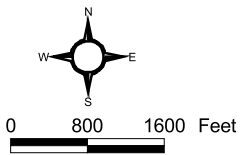
Wanapa Energy Center EIS

Figure 3.9-1
Structures
Pipeline Route Alternatives



Legend

- Location of structure within 1/4 mile of route alternatives
- Electrical Transmission Line Route Alternatives
- Lower Monumental-McNary Transmission Line Relocation



Wanapa Energy Center EIS

Figure 3.9-2
Structures
Plant Site to McNary Substation