

PK64-2PC

Figure 4-1. L-Lake and environs.

4-7

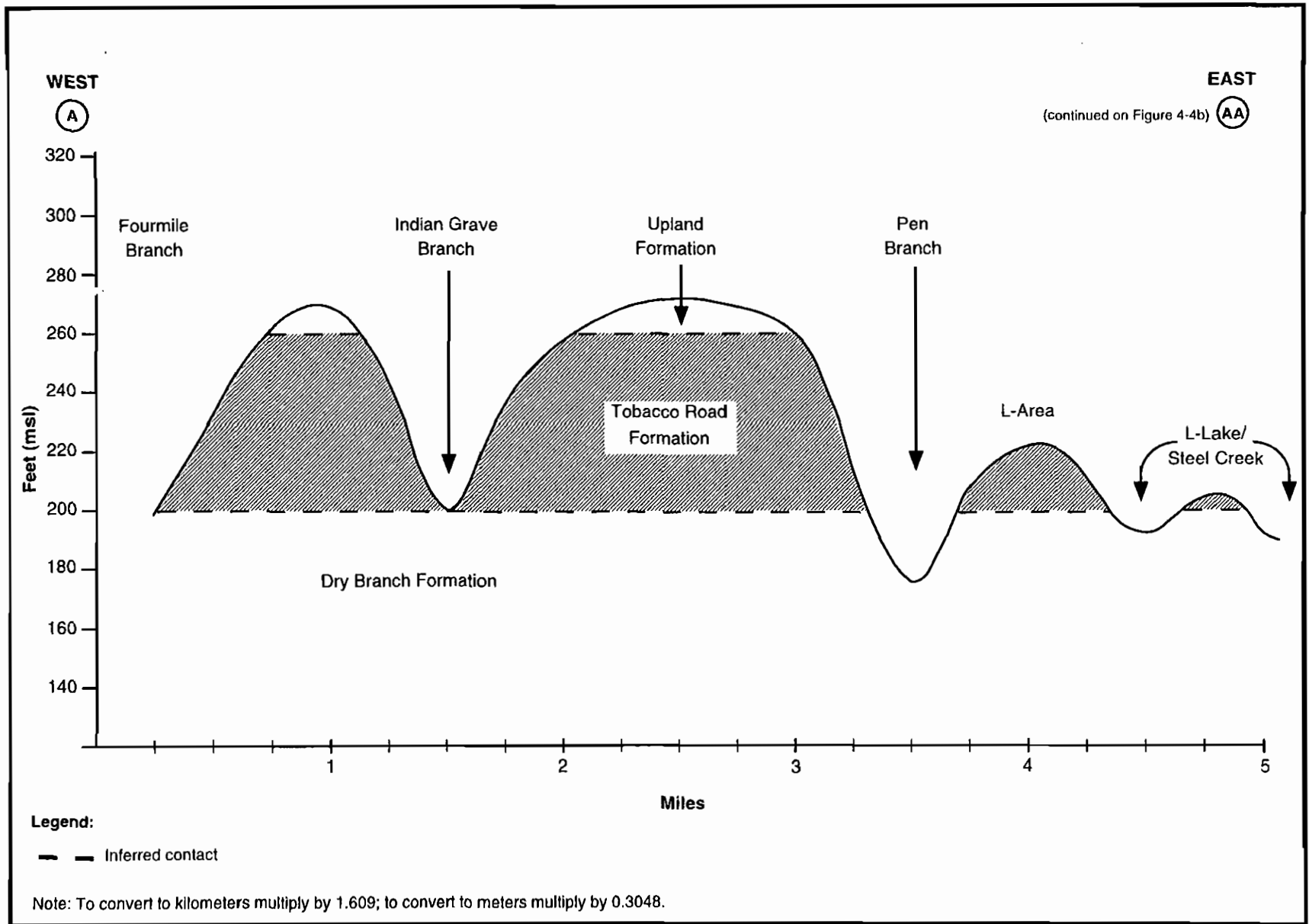
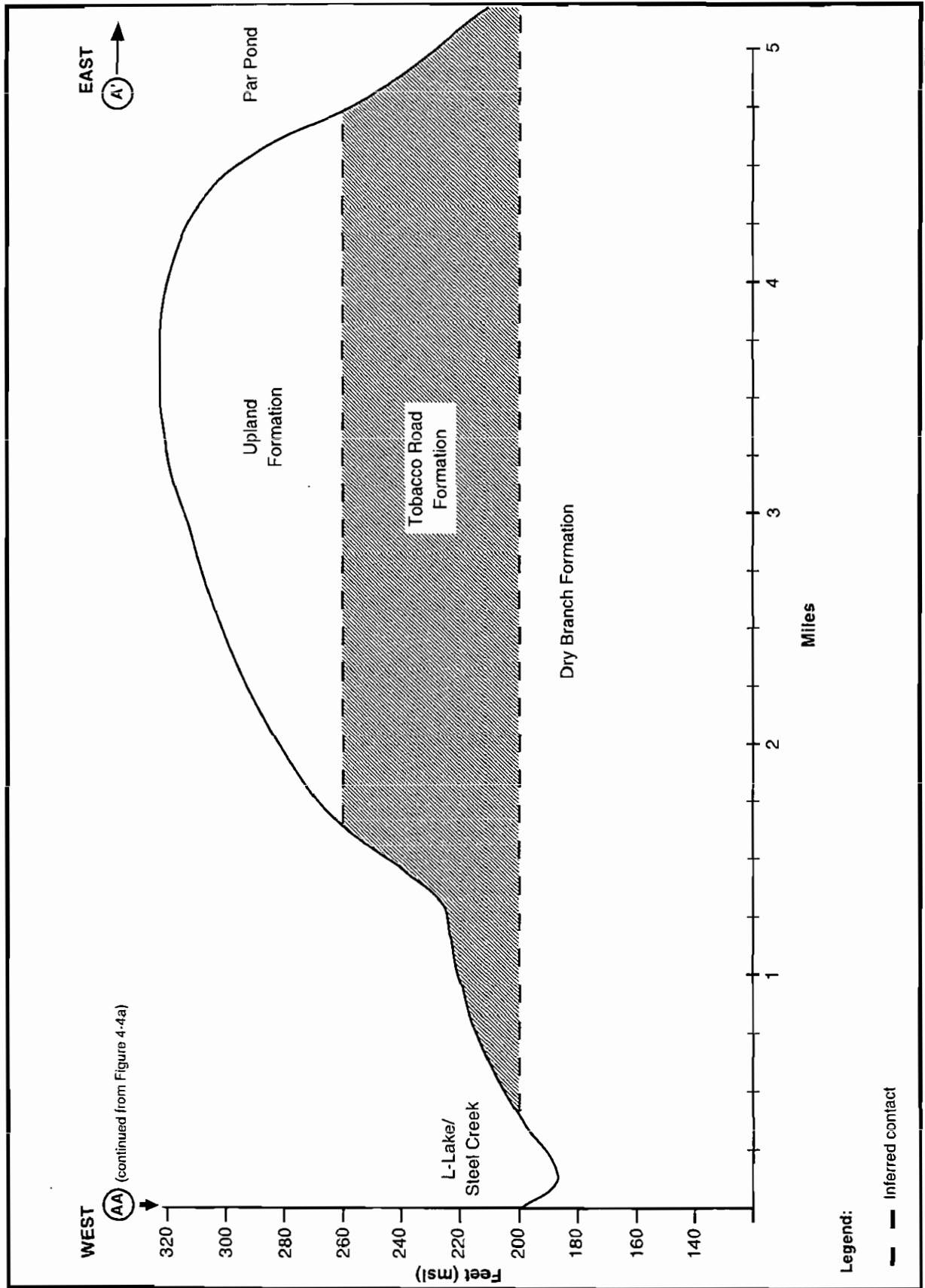


Figure 4-4a. Generalized geologic cross section from Fourmile Branch to L-Lake (west to east).

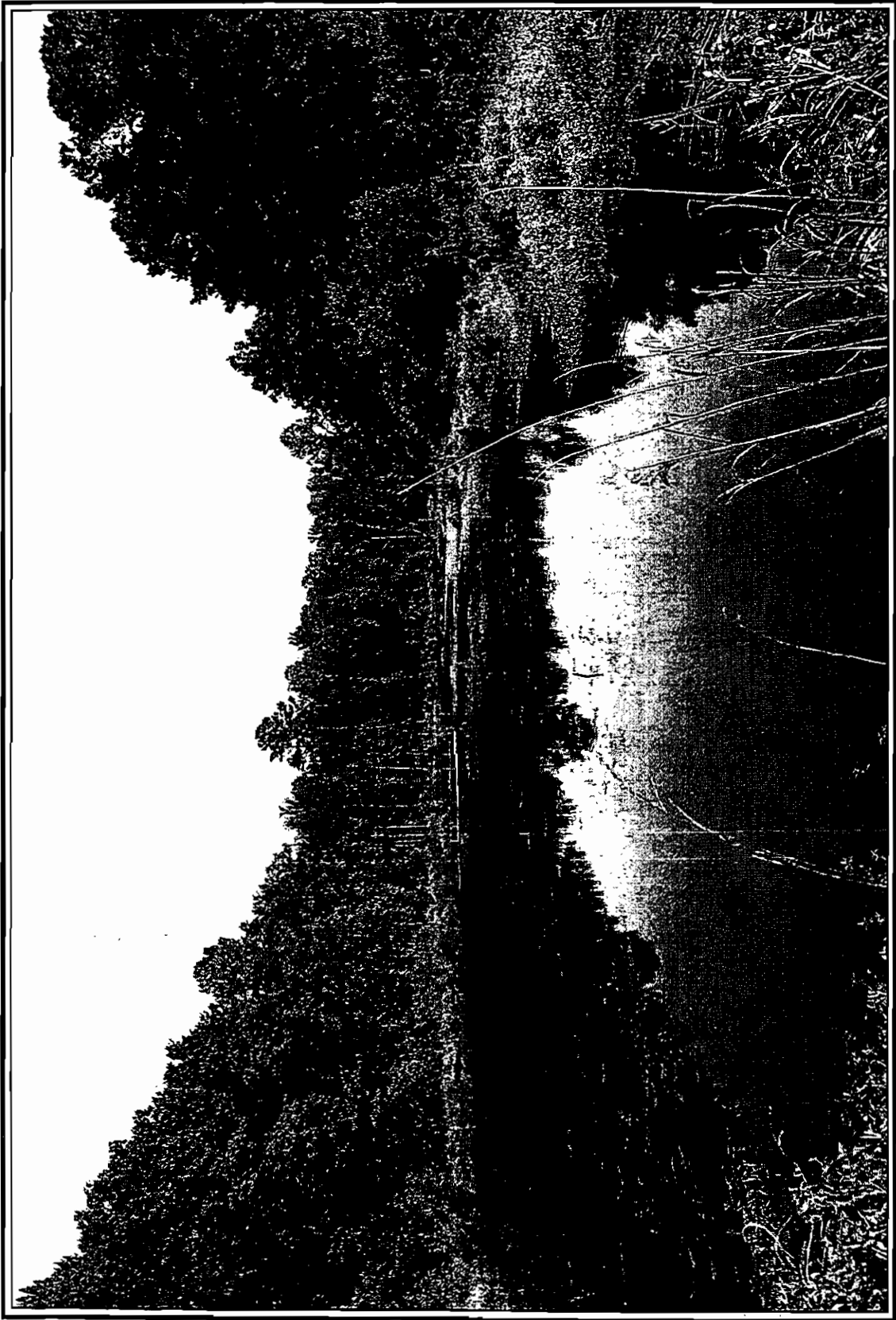
PK64-1PC

DOE/EIS-0268



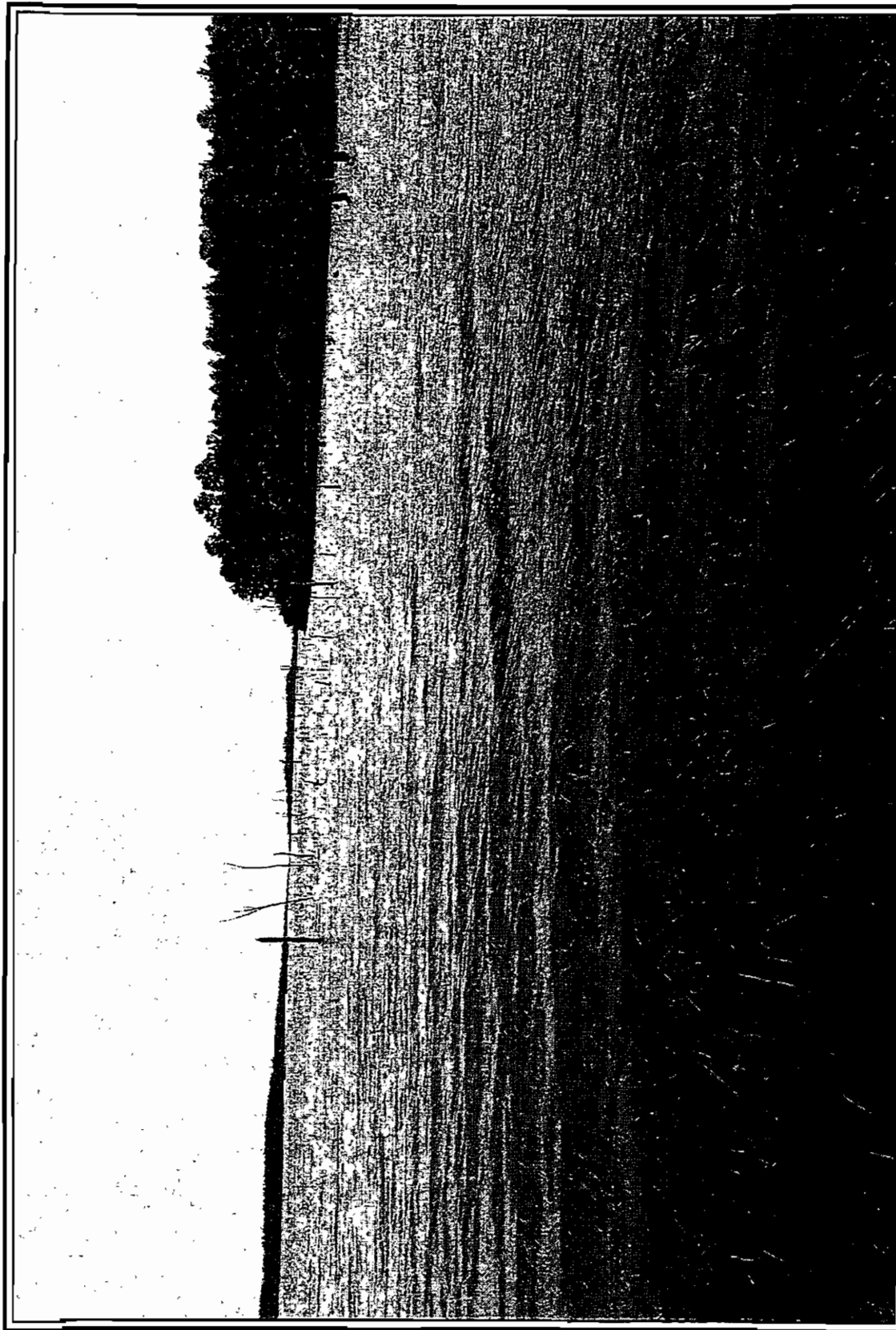
PK64-1PC

Figure 4-4b. Generalized geologic cross section from L-Lake to Par Pond (west to east).



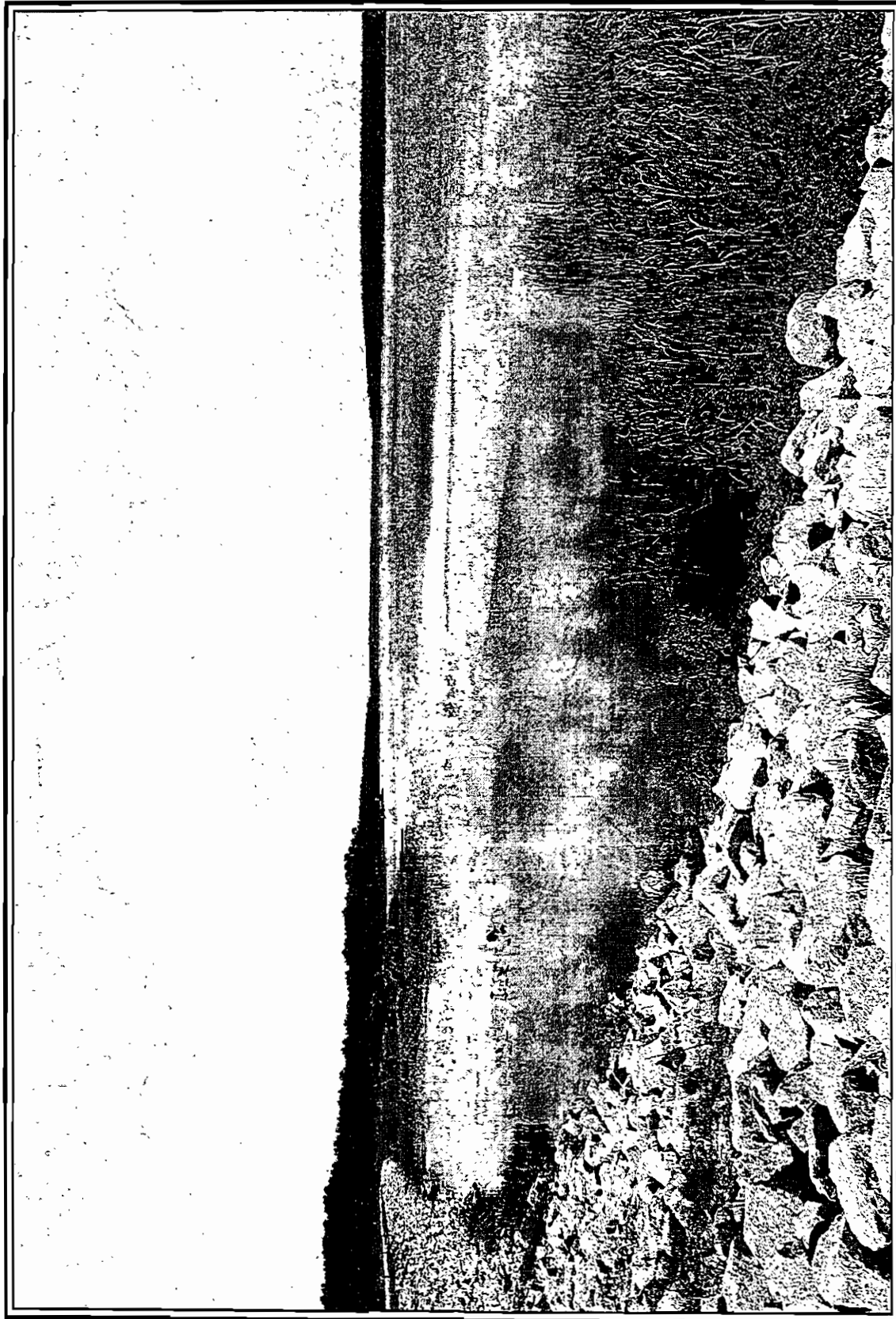
PK64-1CD

Figure 4-15. View of L-Lake/Steel Creek from north side of Road B.



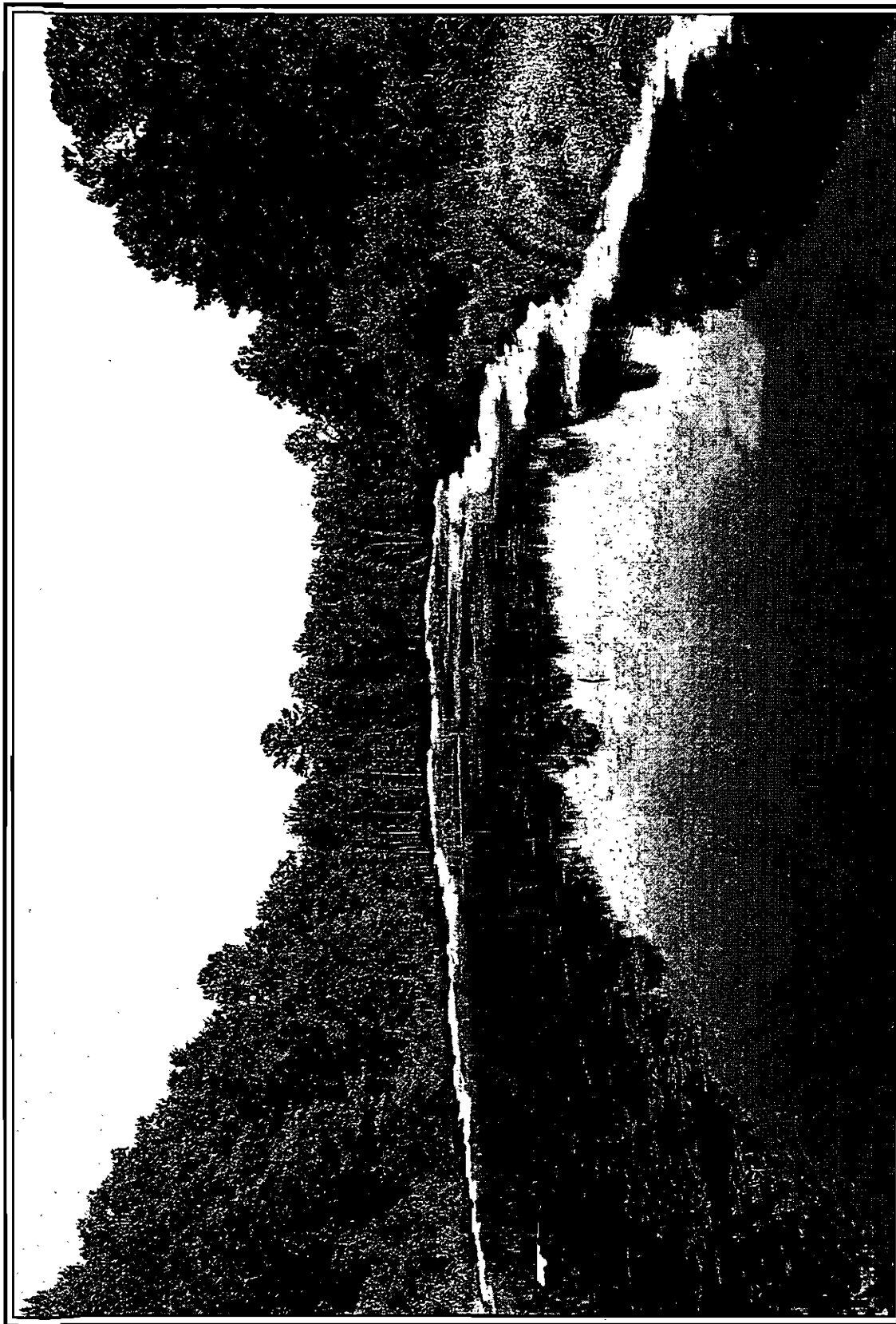
PK64-1CD

Figure 4-16. View of L-Lake from boat ramp on west side of L-Lake.



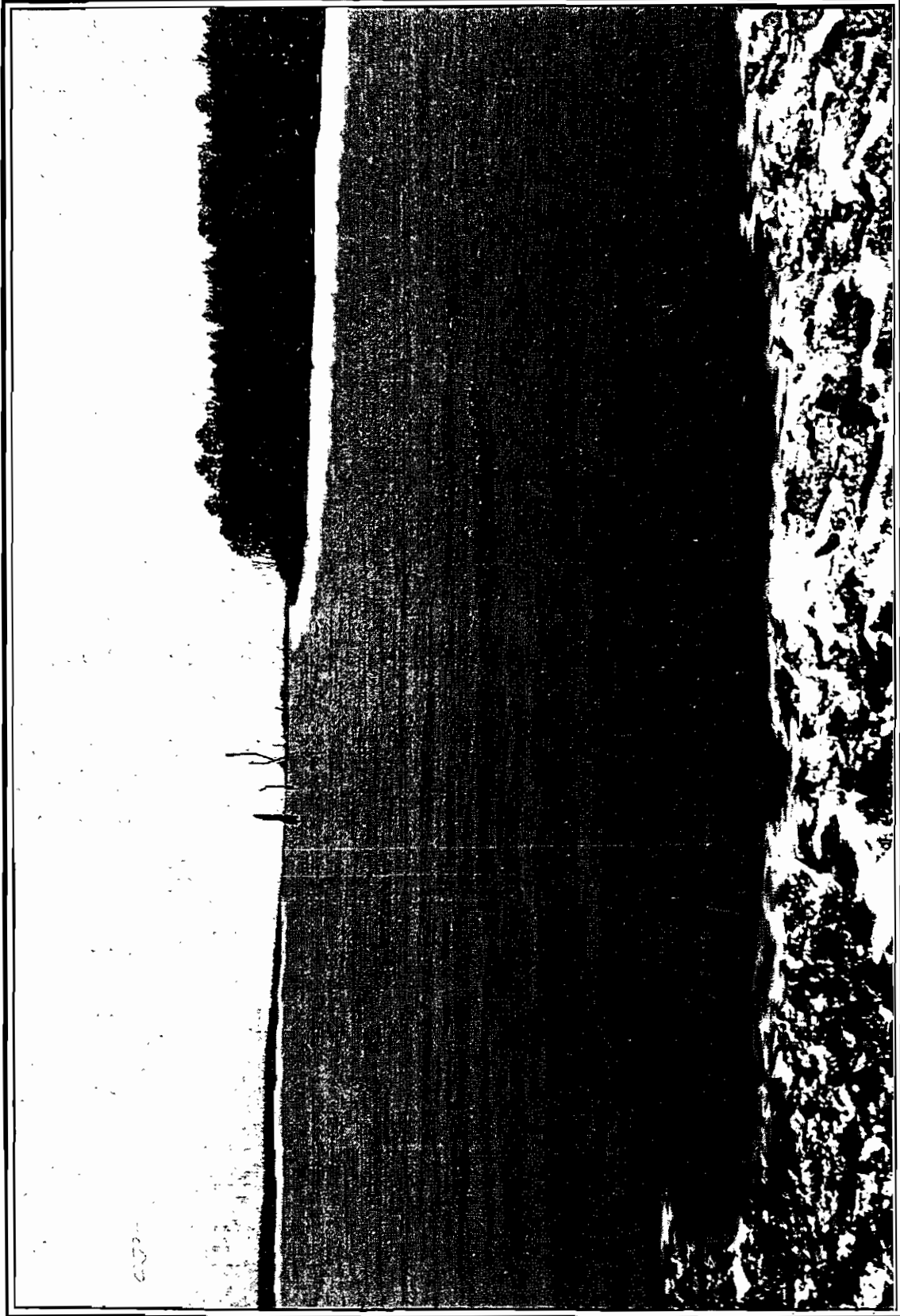
PK64-1CD

Figure 4-17. View of L-Lake from road across the dam at south end of lake.



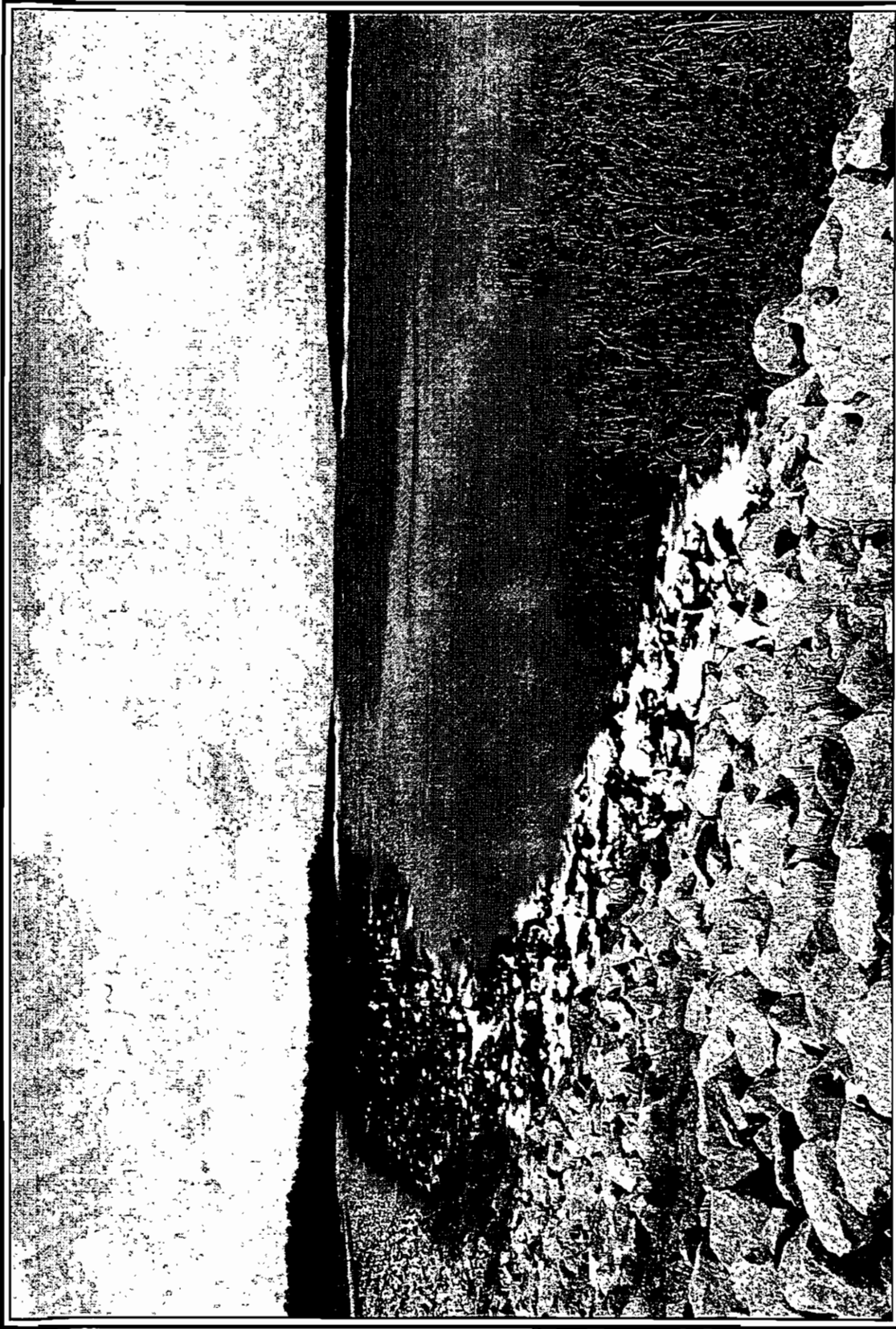
PK64-1CD

Figure 4-18. Artist's rendering of L-Lake/Steel Creek from Road B at partial pool.



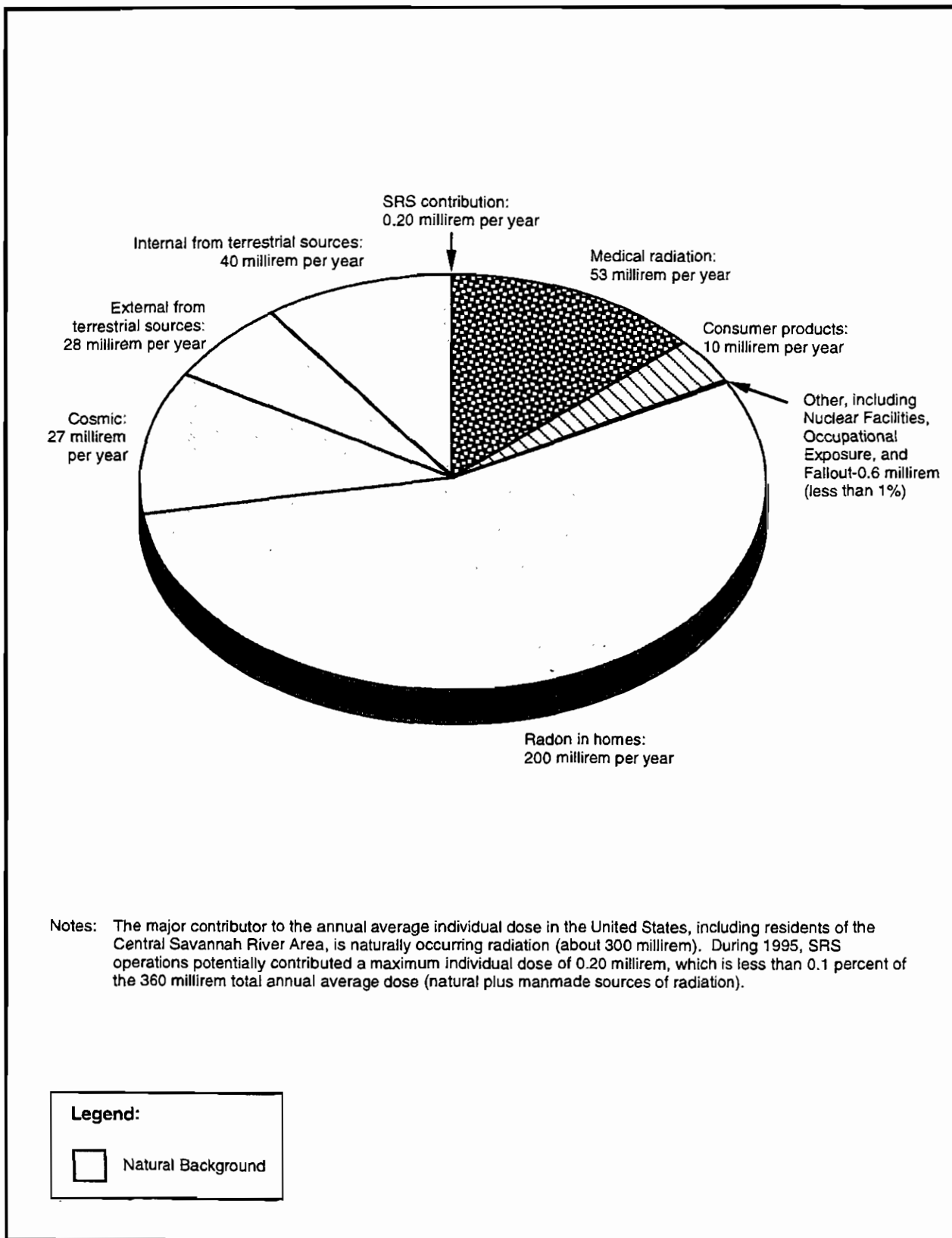
PK64-1CD

Figure 4-19. Artist's rendering of receding L-Lake from boat ramp.



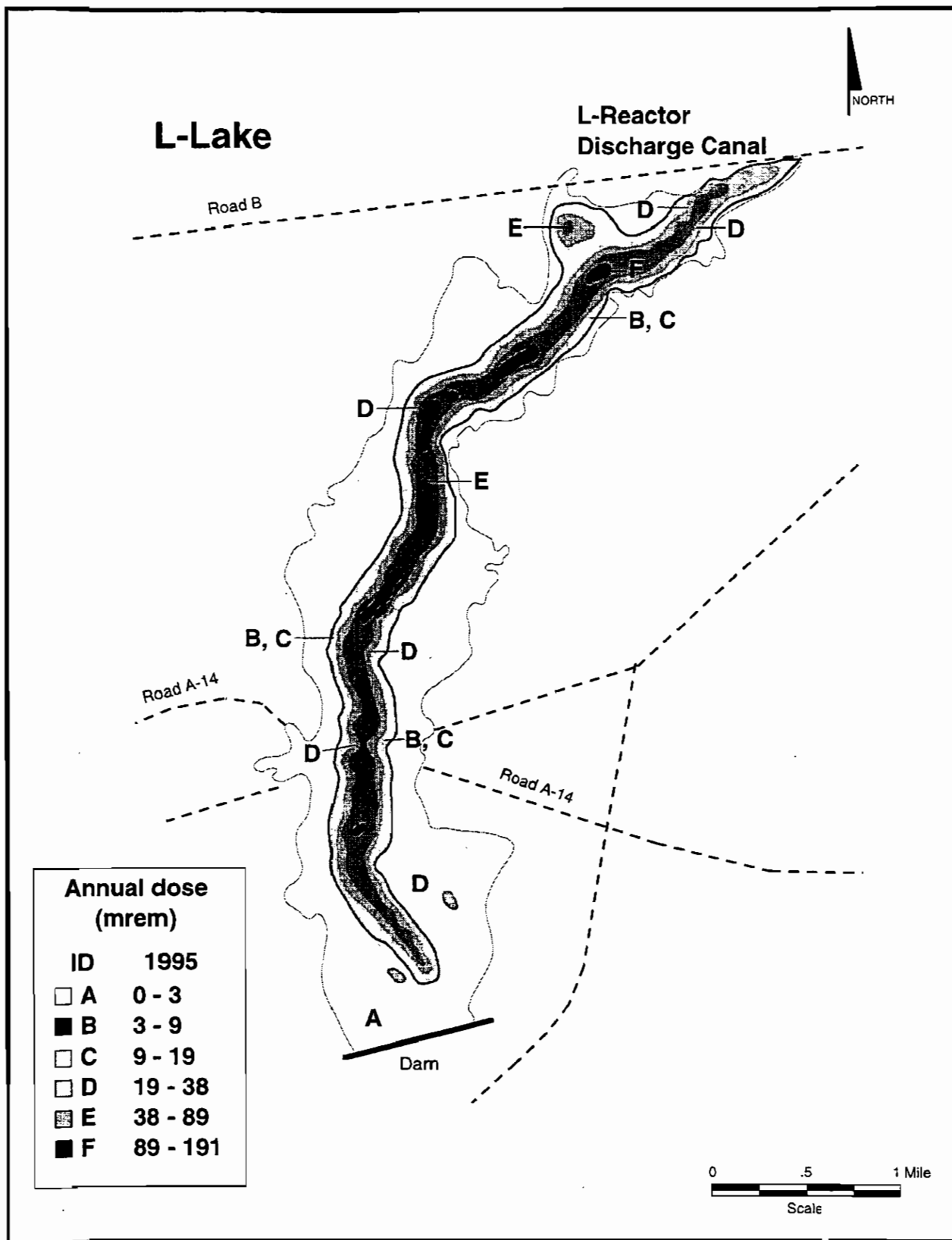
PK64-1CD

Figure 4-20. Artist's rendering of receding L-Lake from top of the dam.



PK64-2

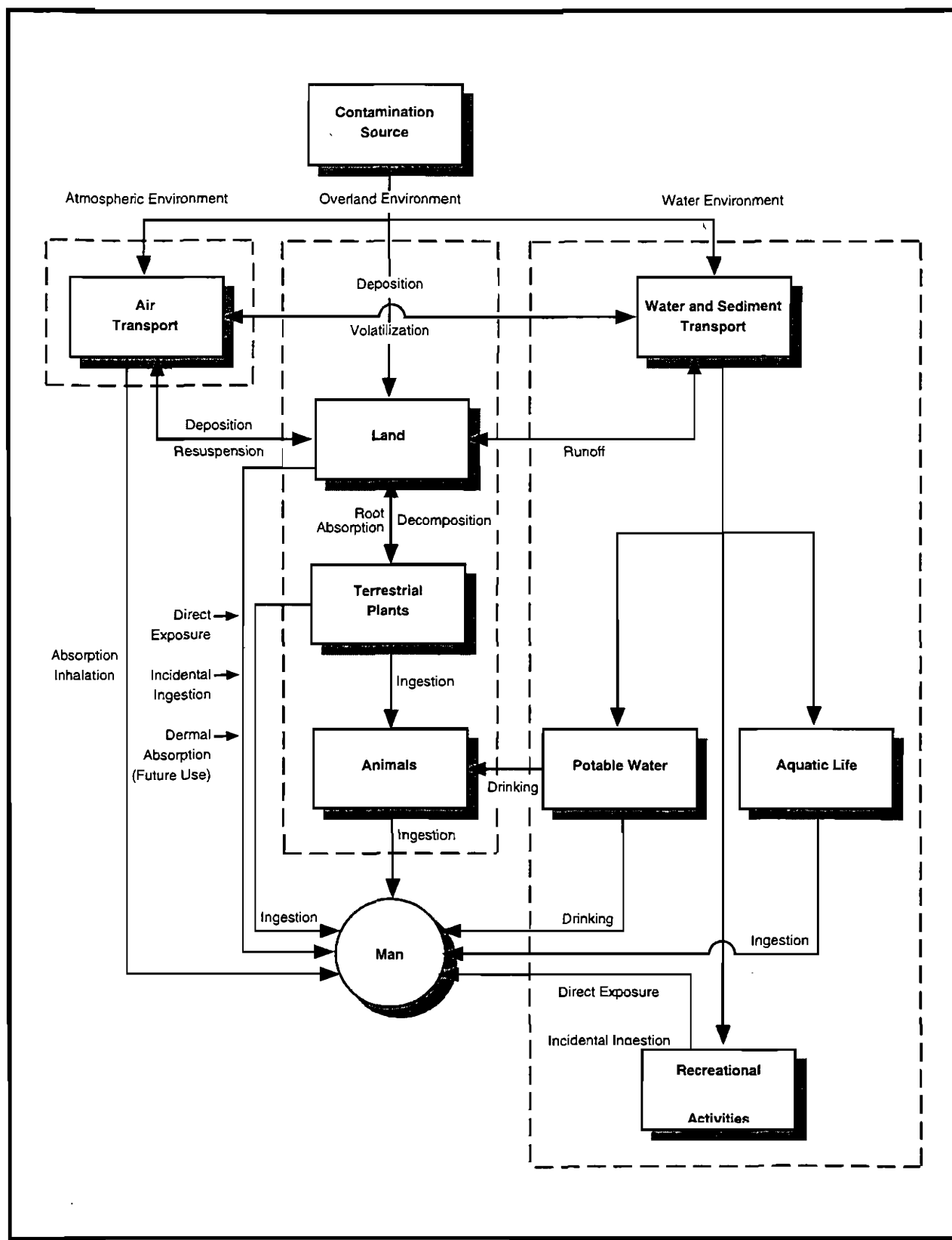
Figure 4-21. Major sources of radiation exposure in the vicinity of Savannah River Site.



TE Source: WSRC (1995c).

PK64-1PC

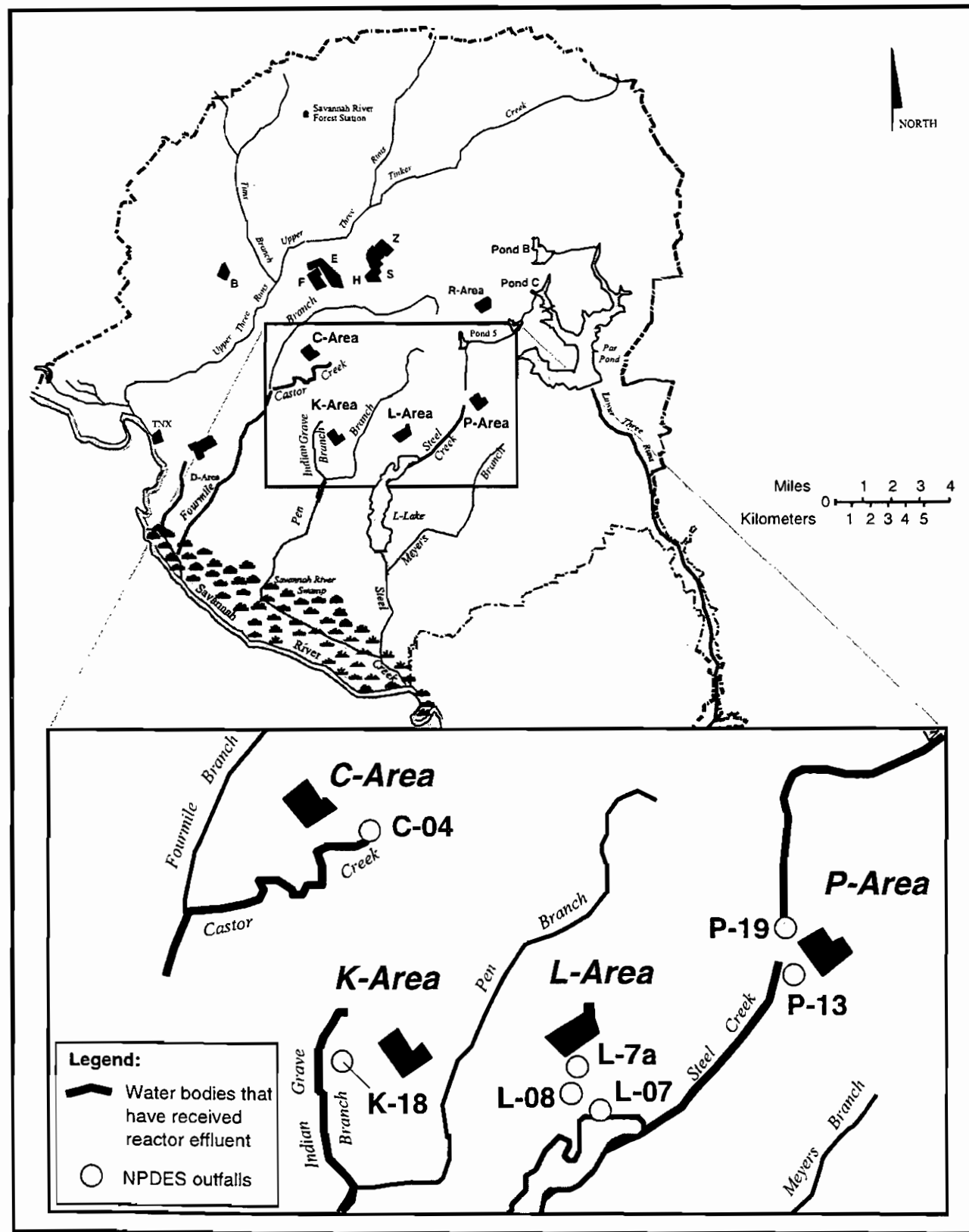
Figure 4-22. Cesium-137 conservative 1995 isodose contours.



PK64-2PC

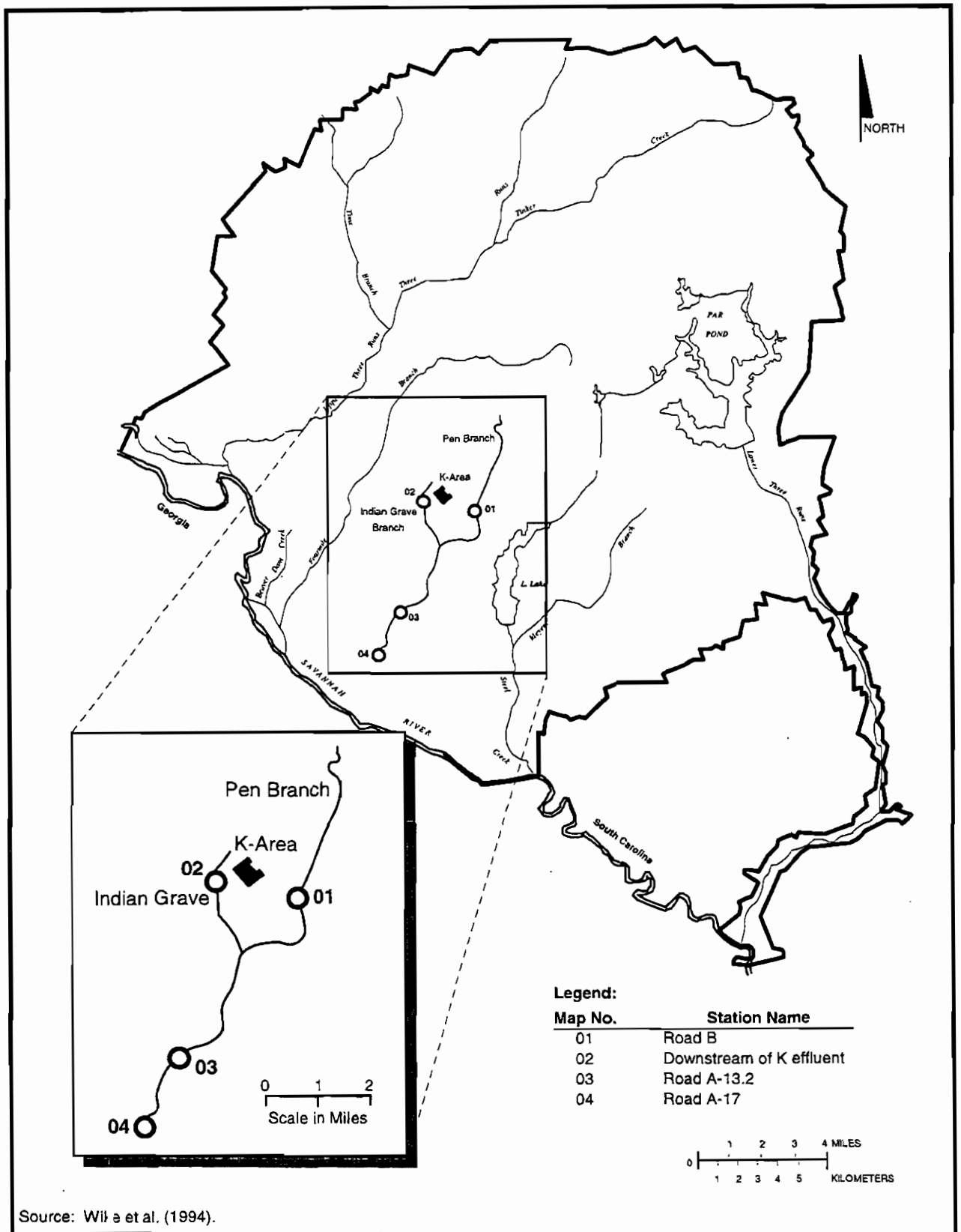
Figure 4-23. Public exposure pathways.

TC



PK64-6PC

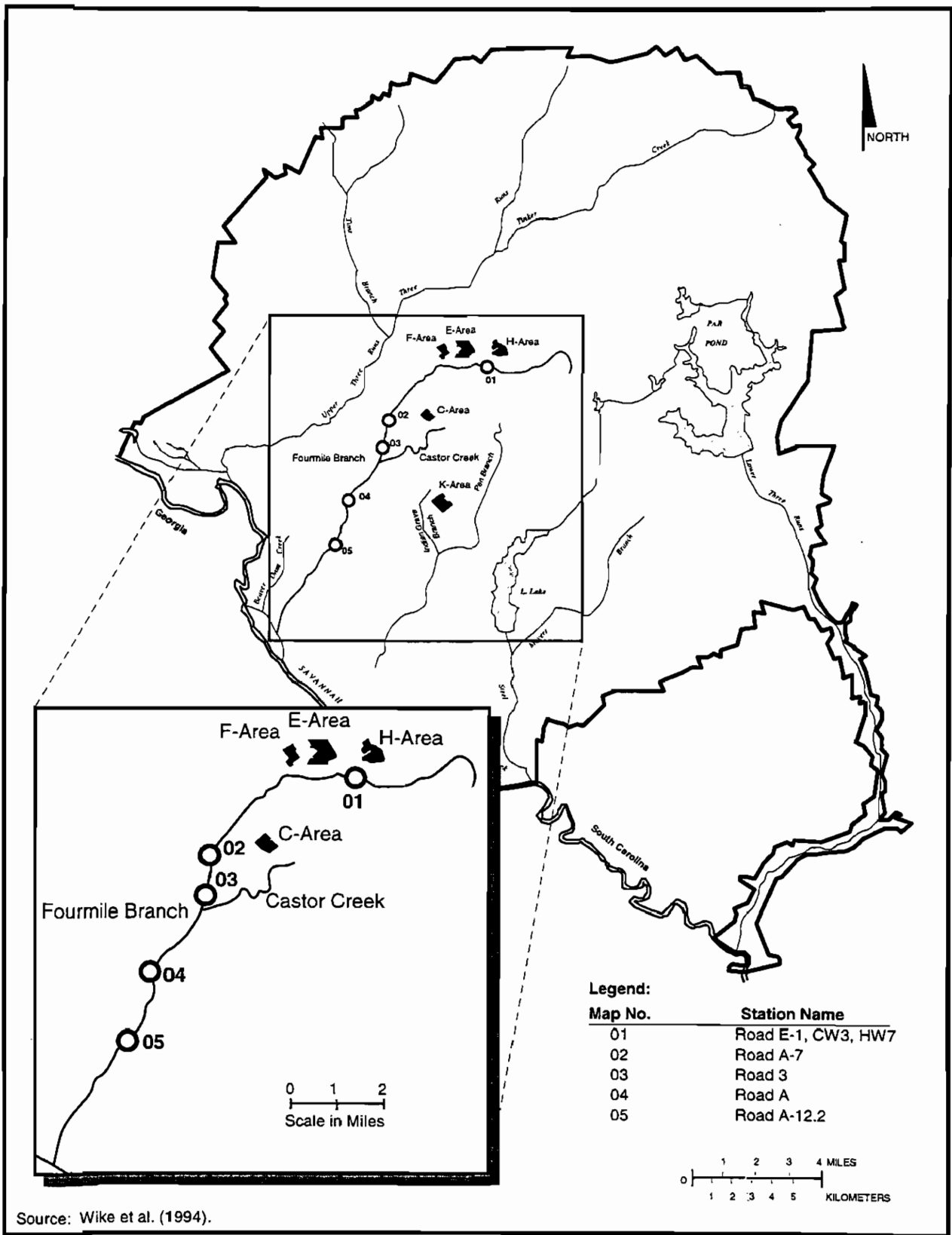
Figure 4-25. Surface water features at the Savannah River site showing water bodies that have received reactor effluent.



Source: Wil e et al. (1994).

PK64-2PC

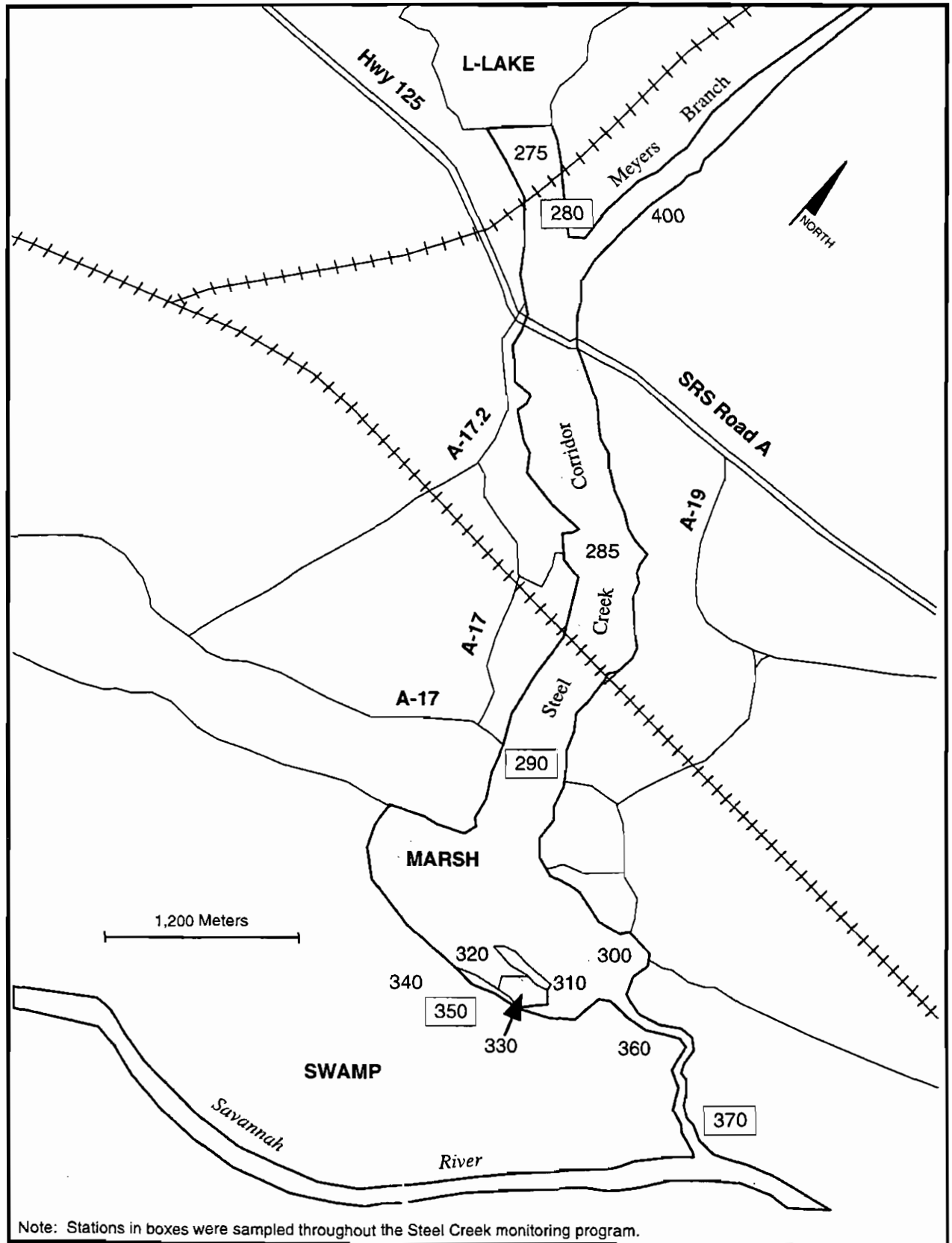
Figure 4-26. Flow measurement sampling stations for Pen Branch.



Source: Wike et al. (1994).

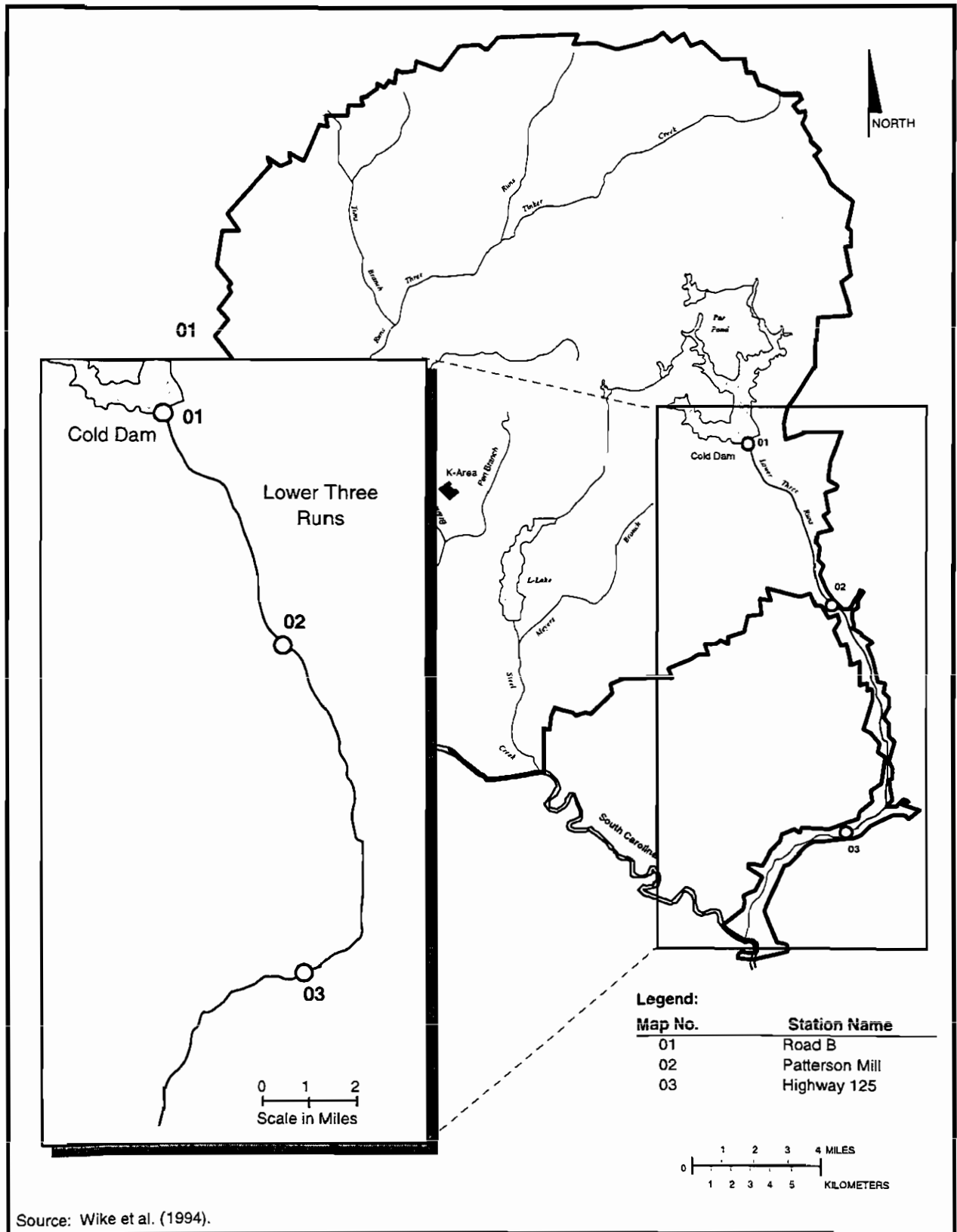
PK64-2PC

Figure 4-27. Flow measurement and water quality sampling stations on Fourmile Branch.



PK64-2PC

Figure 4-28. Locations of Steel Creek water quality sampling stations as indicated by station numbers 275-370.



Source: Wike et al. (1994).

PK64-2PC

Figure 4-29. Flow measurement and water chemistry sampling stations for Lower Three Runs.



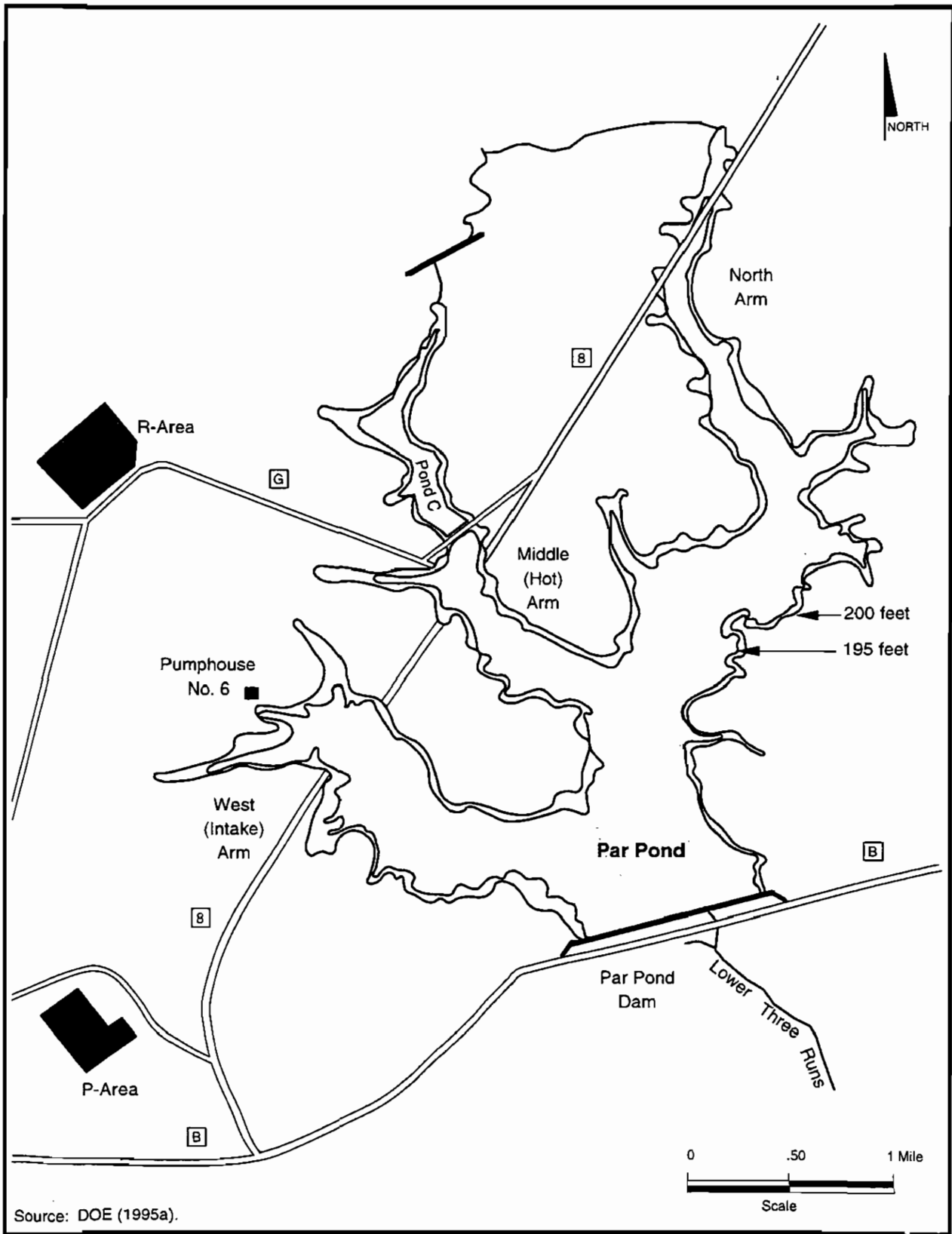
PK64-1CD

Figure 4-30. View of Lower Three Runs from just below the dam on Road B.



PK64-1CD

Figure 4-31. View of Steel Creek from below the dam at L-Lake.



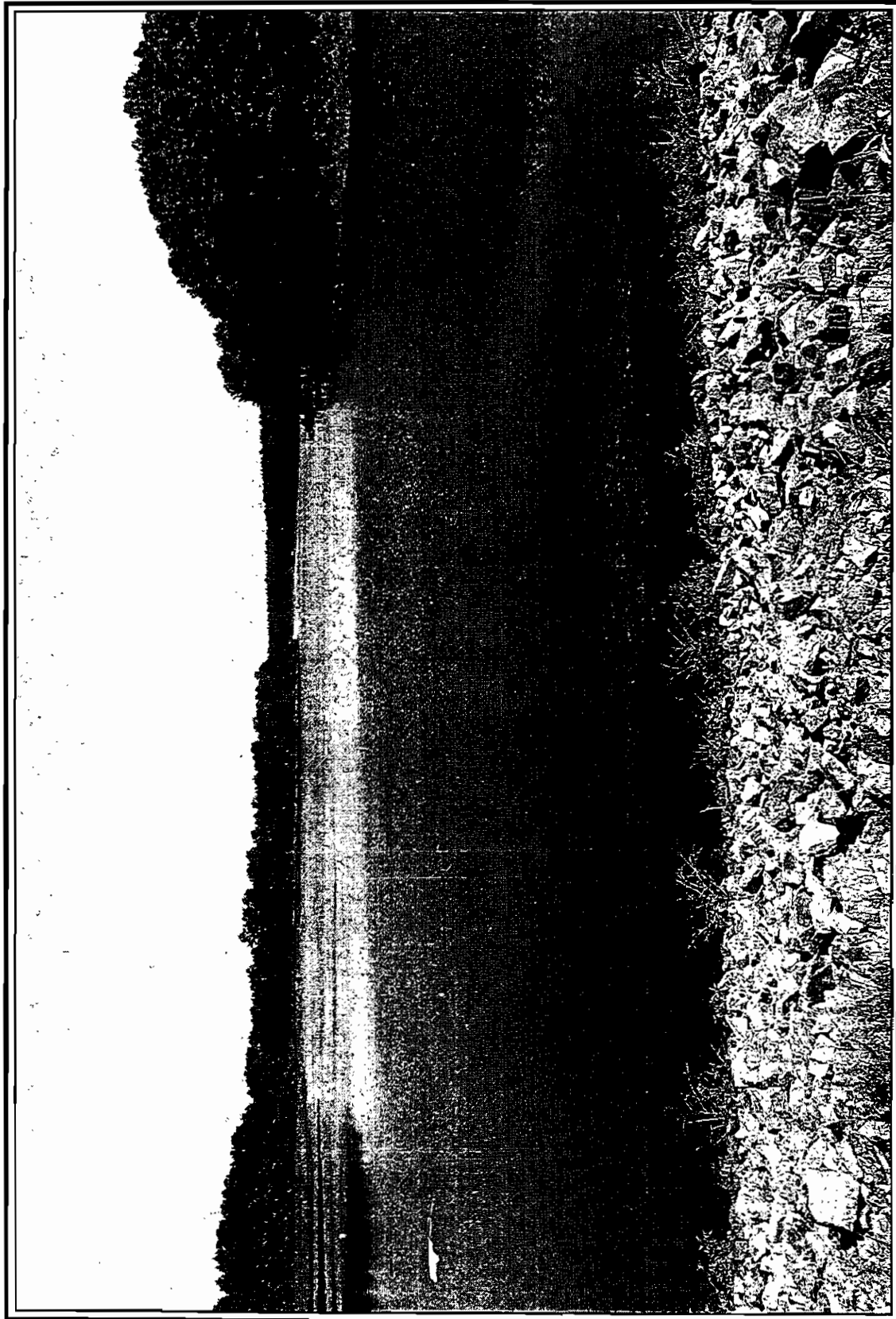
PK64-1PC

Figure 4-32. Par Pond and environs showing full pool contour of 200 feet above mean sea level and the 195 foot contour.



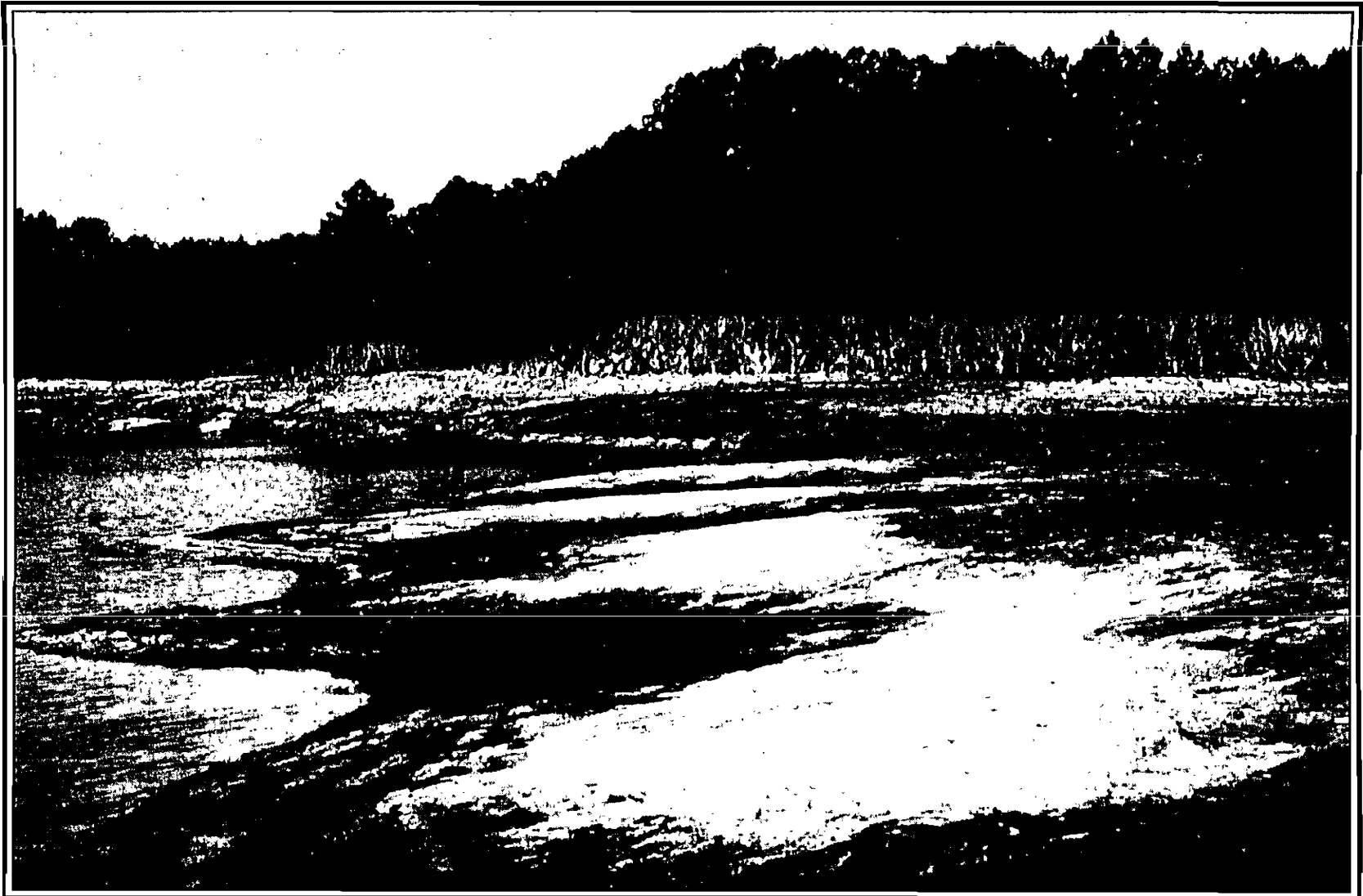
PK64-1C0

Figure 4-33. View of Par Pond looking north.



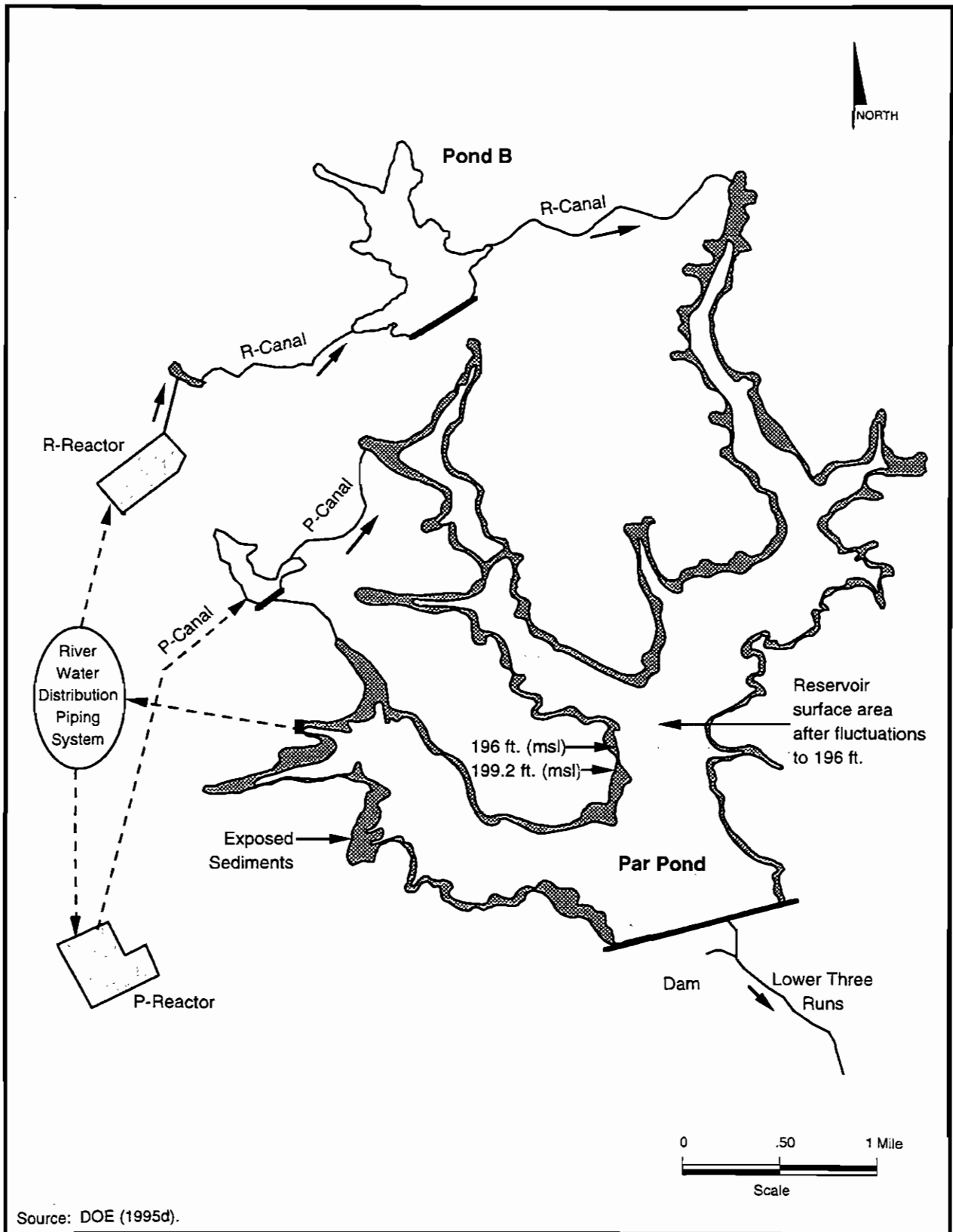
PK64-1CD

Figure 4-34. View of Par Pond at full pool.



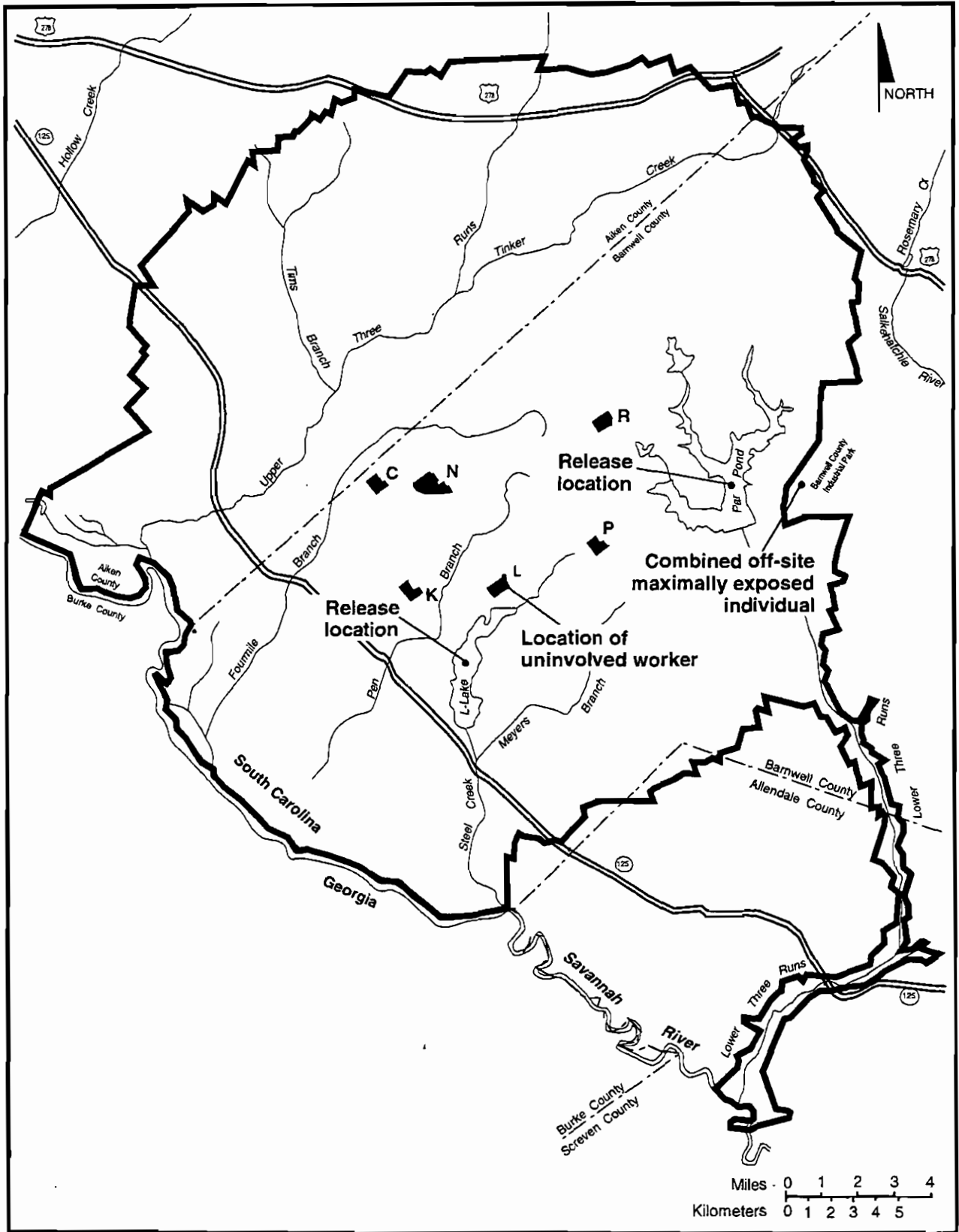
PK64-1CD

Figure 4-35. View of Par Pond at reduced water level (181 feet).



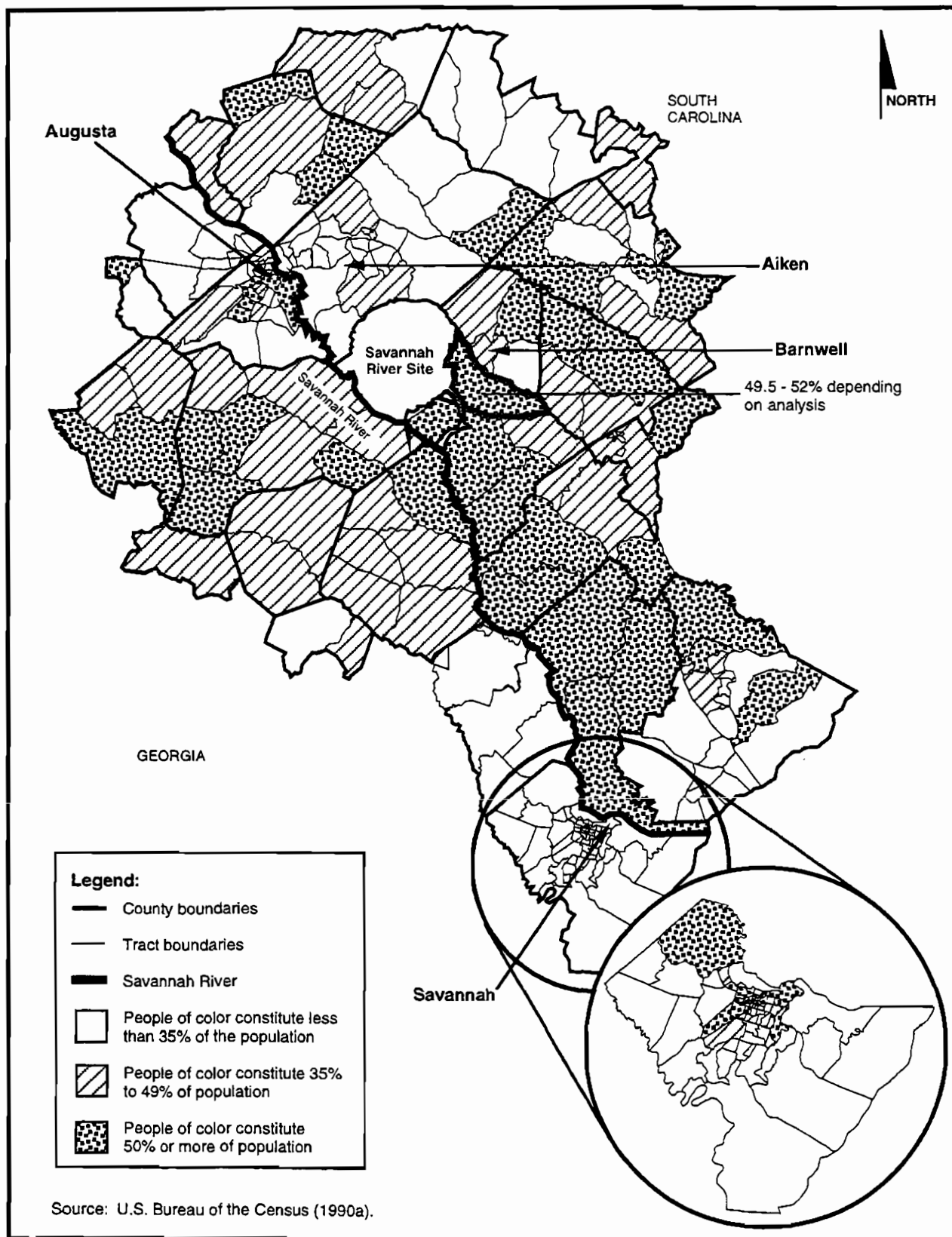
PK64-1PC

Figure 4-36. Exposed sediment areas in Par Pond at the 58.8-meter (196-foot) level and the P- and R-Reactor river water distribution system.



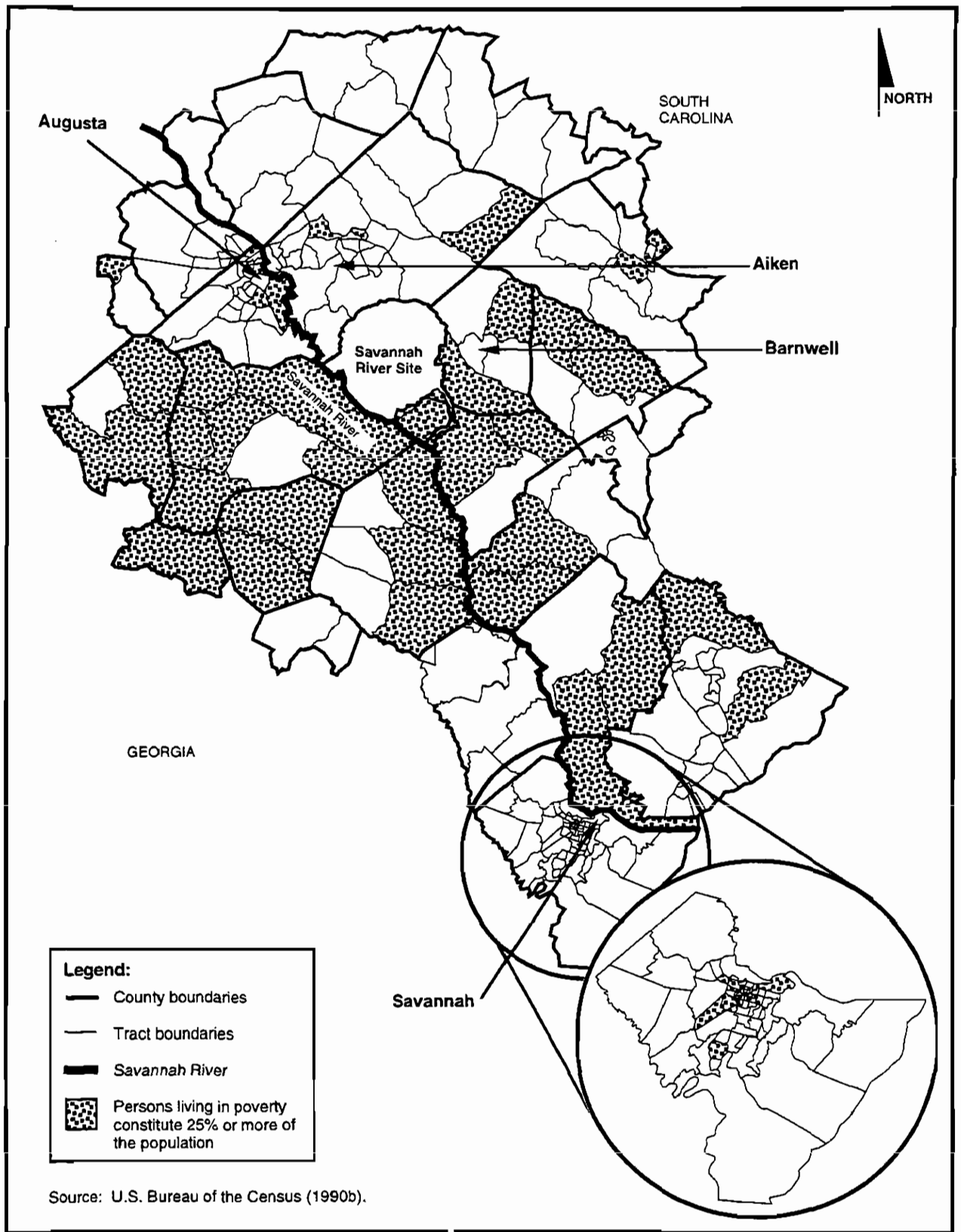
PK64-2

Figure 4-37. Atmospheric release locations.



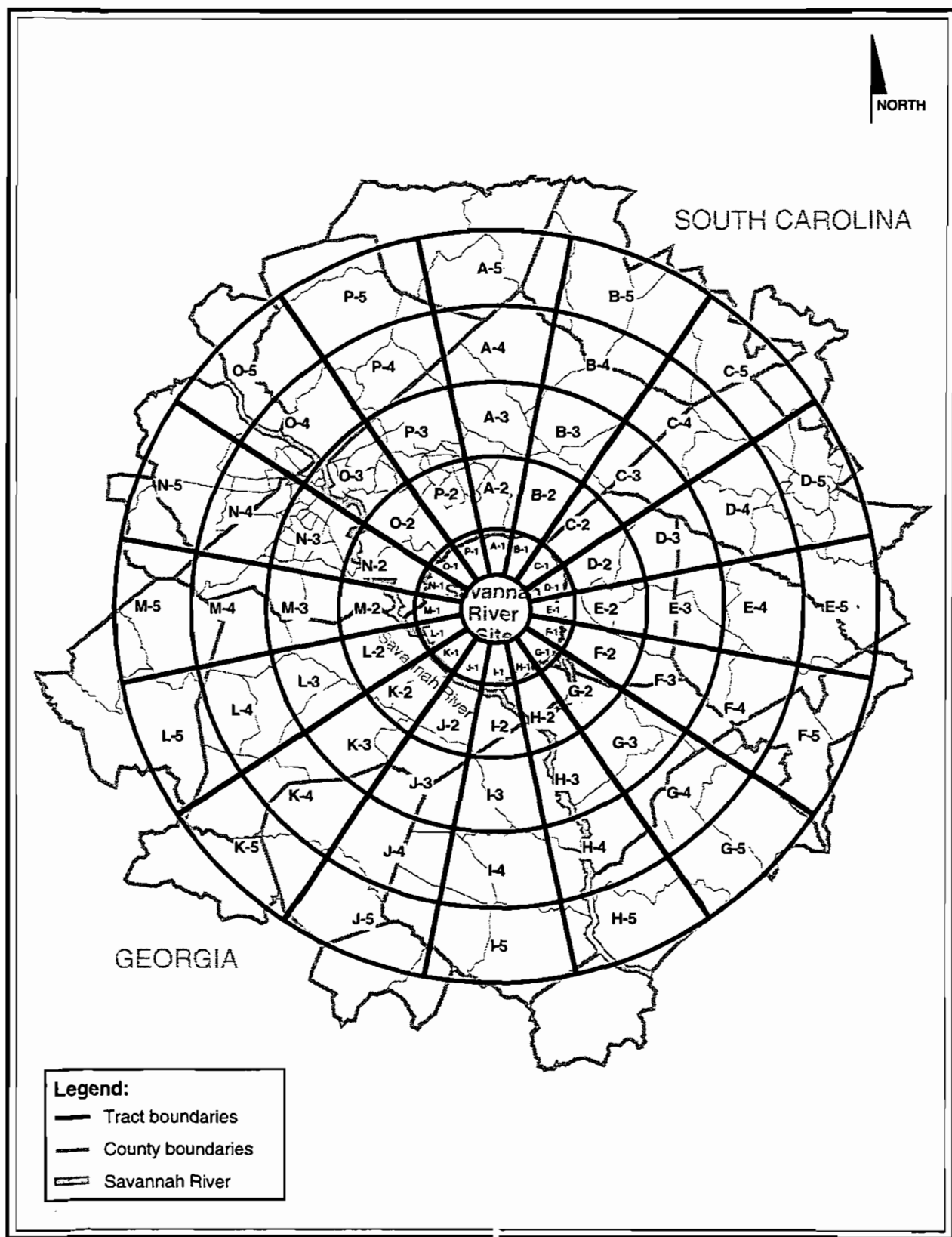
PK64-2

Figure 4-38. Distribution of people of color by census tract in the Savannah River Site region of analysis.



PK64-2

Figure 4-39. Distribution of low-income census tract in the Savannah River Site region of analysis.



PK64-1

Figure 4-40. Annular sectors around the Savannah River Site.