



SCC Emission-Free and Treaty Resource Protection Clean Energy Initiative

**Jeff Ackley, Jr., Sokaogon Chippewa Community
John Clancy, Godfrey & Kahn, S.C.**



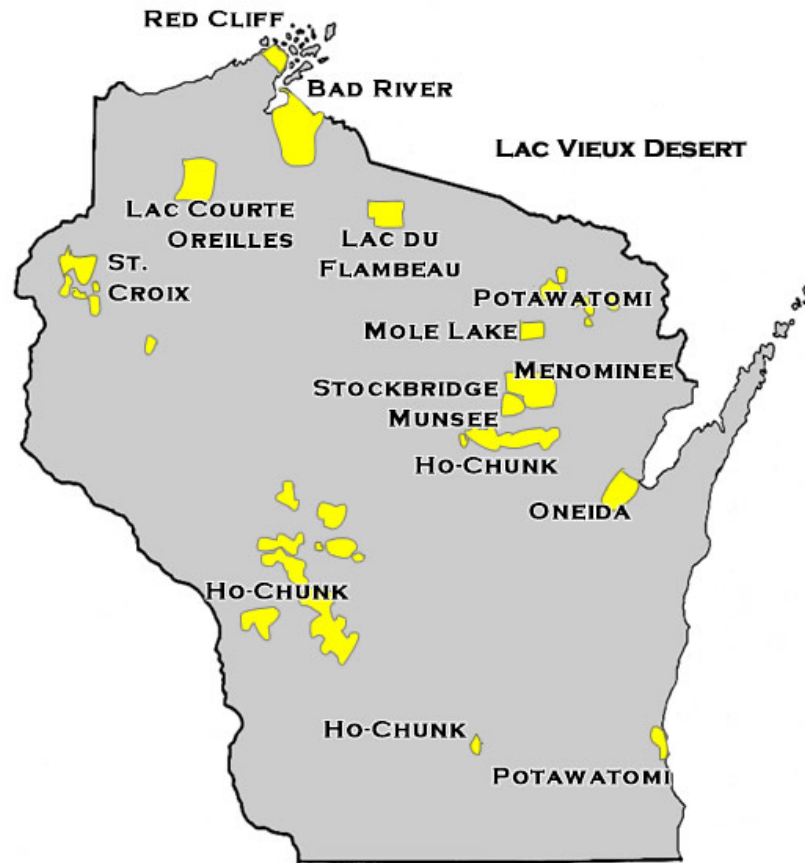
Project Overview

- The SCC Emission-Free and Treaty Resource Protection Clean Energy Initiative (the “Project”) goals include:
 - Installing approximately 606 kW of solar PV capacity that serves 17 Tribal buildings;
 - Significantly reducing the Tribe’s energy bills over the Project’s life; and
 - Lowering the Tribe’s carbon footprint.

Sokaogon Chippewa Community

- SCC's Reservation is located within its ancestral homelands in Forest County, Wisconsin.
- There are 1,377 Tribal members
 - 348 are 17 years old or younger.
 - 967 are between the ages of 18 and 64.
 - 62 are 65 years old or older.
- SCC has long been recognized as one of the poorest Tribes in the country.
 - A 2013 article in Indian Country Today indicated that SCC had the highest unemployment rate of any Tribe with a population over 1000 in the country.
 - Of those employed, 79% were living below the national poverty standards.

Map Showing SCC





SCC's Long-Term Energy Goals

- SCC has developed long-term energy goals and visions rooted in its strong commitment to protect Mother Earth, its environmentally-sensitive Reservation, and treaty resources.
- SCC has a strong environmental commitment to protecting its treaty fishing areas and sacred wild rice beds.



SCC's Long-Term Energy Goals

- The Tribe's goals and visions heavily focus on reducing the Tribe's environmental footprint, including sulfur, mercury, and other emissions.
- Because protecting its treaty rights and resources is important to the Tribe, SCC is committed to using energy technologies that are emission free.



Project Objectives

- The overall goals of the Project are to:
 - Decrease the Tribe's footprint;
 - Deploy renewable emission-free energy technology on the Tribe's Reservation;
 - Lower Tribal energy costs;
 - Provide substantial training and job opportunities to Tribal members; and
 - Provide a replicable model for other low-income Tribal communities.



Replicability of the Project

- The Project provides significant additional economic and environmental benefits due to replicability.
- The Project demonstrates that even Tribes facing significant financial limitations like SCC can use available grant and other funding sources to develop an emission-free renewable energy generation project that creates significant environmental and economic benefits.
- This replicability is especially important to SCC because it allows the environmental benefits of this project to multiply as other similar projects are implemented.



HUD Indian Community Development Block Grant

- Rooftop solar facilities on about 48 homes
- Total size: ~273 kW
- Net metering
- Total cost: \$900,000



ICDBG





ICDBG





DOE Project Summary

- The Project:
 - Combines DOE and private investor funds;
 - Installs large-scale solar facilities to provide affordable clean energy to a Tribe with limited financial resources and a strong environmental vision; and
 - Takes into account the available but limited (i.e., 20 kW) net metering available from Wisconsin Public Service Corporation, the utility that services the Tribe's Reservation.



DOE Project Summary

- The Project accomplishes this by:
 - Limiting the size of the installations to the maximum allowed under net metering; or
 - For larger energy-using buildings, designing the PV facility to ensure that essentially all of their energy will be used by the Tribal buildings they serve.



Expected Outcomes of the Project

- Generate approximately 21,014,108 kWh of clean energy over the Project life;
- Provide economic benefits, including the energy generated, training opportunities and jobs created during installation and over the life of the Project;
- Create a replicable project model for other tribes with limited financial resources;
- Advance the Tribe's environmental stewardship and protect sensitive wild rice beds and treaty fishing rights; and
- Advance the Tribe's long-term vision of becoming energy independent.



Summary of Project by Numbers

Summary of Project by Numbers

Total Project Size	606 kW
Buildings Served	17
Total Energy Produced by Project	21,014,108 kWh
Energy Savings	6.78%
Greenhouse Gas Emissions Avoided	542 metric tons/year
Federal funds	\$1,000,000
Cost-share	\$1,152,925
Total	\$2,152,925



Key Milestones & Deliverables

- Year 1:
 - Execute all agreements
 - Obtain all permits
 - Install/commission Project
 - Begin operation and monitor kWh production and building energy-use reduction
- Year 2:
 - Continue operation/monitoring of kWh production and building energy-use reduction



Task 1: RFPs

- Published invitation to Indian-owned economic enterprises to submit statement of intent to respond to bid announcement;
- Published request for proposals;
- Selected contractor/investor;
- Submitted selection to DOE; and
- DOE approved the selection.



Task 2: Approval of Detailed Site Layouts and Drawings

- Installer prepared site layouts and drawings of solar facilities.
- The Tribe reviewed and approved these documents.
- The Tribe provided drawings to DOE.
- DOE conducted NEPA review.



Task 3: Tribal LLC Legal Structure

- Prepared LLC formation documents for Sokaogon Chippewa Solar Authority, LLC.
- Drafted, negotiated and is finalizing an operating agreement.



Tribal LLC Operating Agreement

- Under the operating agreement,
 - SCC is initially 1% owner and Investor is 99% owner to maximize the value of the tax credits;
 - SCC receives the full value for tax credits received by the Investor;
 - Once the remaining amount due to the investor has been paid, any income to the Tribal LLC will be distributed to SCC, and when that occurs, electricity-related payments will be reduced to a nominal amount; and
 - If the Investor stays, all LLC net cash goes to SCC for many years and SCC has the option to purchase.



Task 4: Access Permit/Agreement

- The Tribal LLC applied for a permit from the Tribe.
- The application package included all required documentation for environmental and cultural review.
- The Tribe conducted its environmental and cultural review and is issuing the access permit.



Task 5: Electrical Services Agreement (“ESA”)

- The Tribe negotiated and will execute the ESA with the Tribal LLC.
- The ESA provides additional authority, direction and control of the Tribe over the operation of the facilities, including requirements that the facilities can only serve the designated buildings under this grant application and that all output from the facilities will be provided to buildings as determined by the Tribe.



Task 6: Design-Build Agreement

- The Tribe negotiated and will execute the Design-Build Agreement between the Tribal LLC and the Installer.
- The Agreement includes:
 - Fixed fee
 - Warranties
 - Insurance
 - Technical requirements, including roof analysis
 - Federal grant requirements
 - Indemnities



Task 6: Design-Build Agreement

- The Tribe is requiring the Installer to commit to a capped price and to provide a 6-year parts and labor warranty on the solar facilities and to pass through all of the warranties provided by the equipment manufacturer.
- Includes training and installation work by Sokaogon Chippewa Housing Authority employees.



Task 7: Environmental Permit

- The Installer submitted the necessary documentation to obtain the environmental permit from the Tribe.
- The Tribe issued environmental permits for the wastewater treatment facility, convenience store, and casino lodge sites.



Task 8: Interconnection Approval

- The Installer is applying for the interconnection approval on behalf of the Tribal LLC.



Task 9: Construction

- The Installer will mobilize construction personnel, coordinate material delivery, and install the Project.



Task 10: Commissioning

- The utility will inspect and approve the solar facilities.



Task 11: Monitoring Equipment

- The Installer will install monitoring equipment to ensure that it is functioning properly.

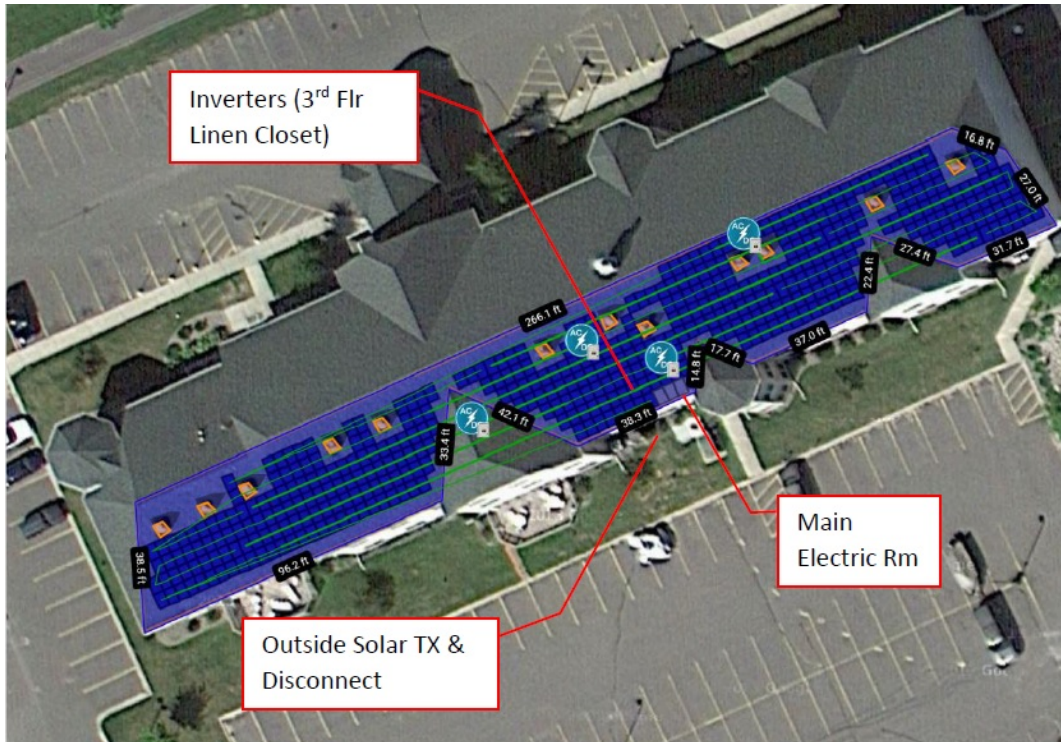


Task 12: Verification

- The Tribe will verify the reduction in fuel use by monitoring production from solar facilities and comparing it against energy usage of buildings from all sources.



Casino Lodge



- 105.7 kW
- 132,888 kWh/yr



Casino Central



- 26.4 kW
- 30,394 kWh/yr



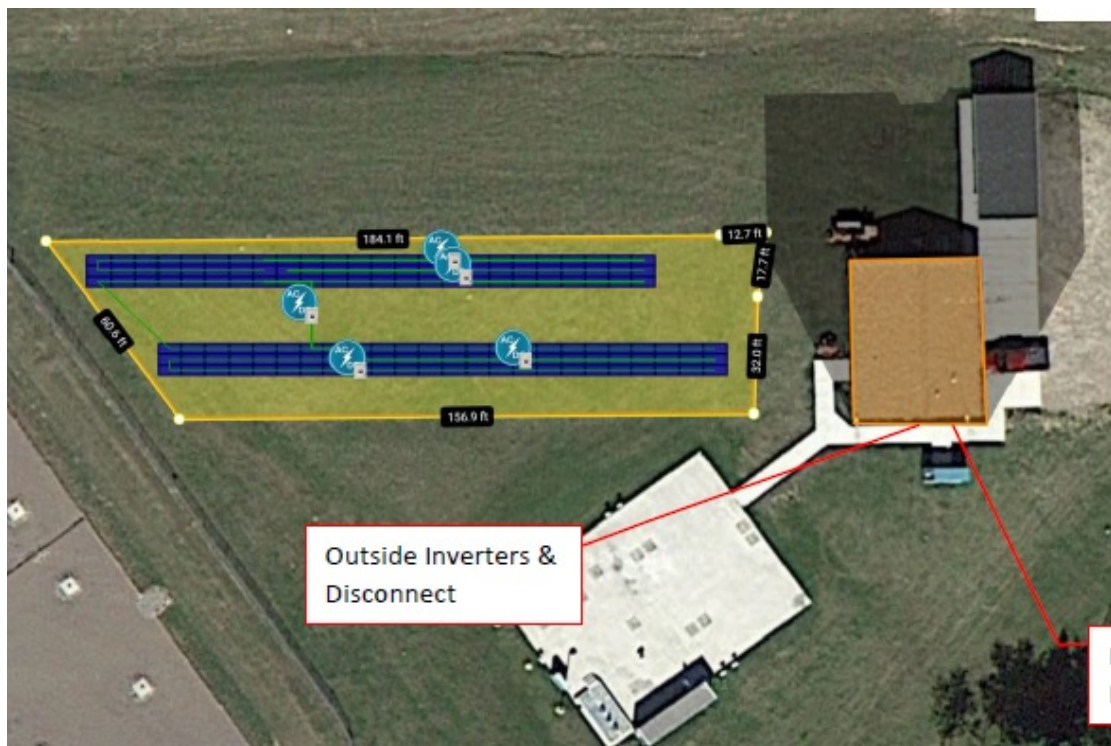
Casino North/Bingo



- 59.4 kW + 15.84 kW
- 80,797 kWh/yr



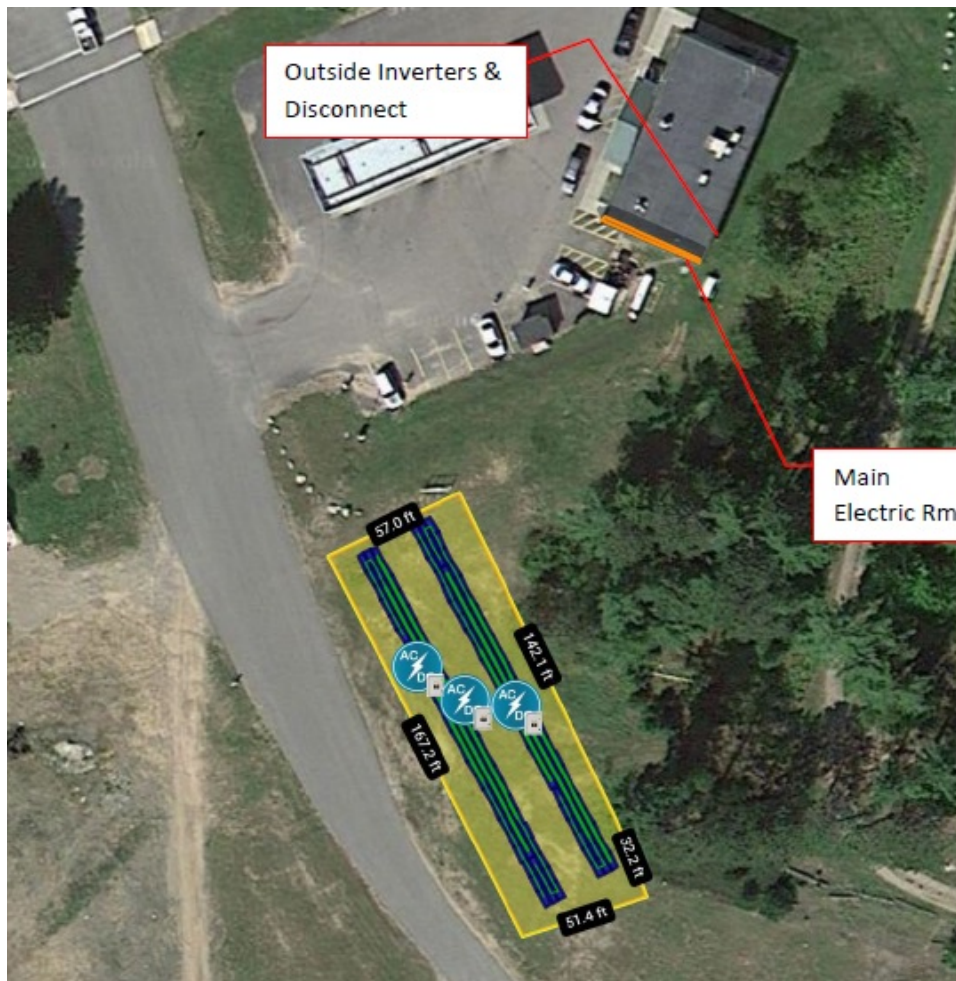
Wastewater Treatment



- 47.5 kW
- 62,232 kWh/yr



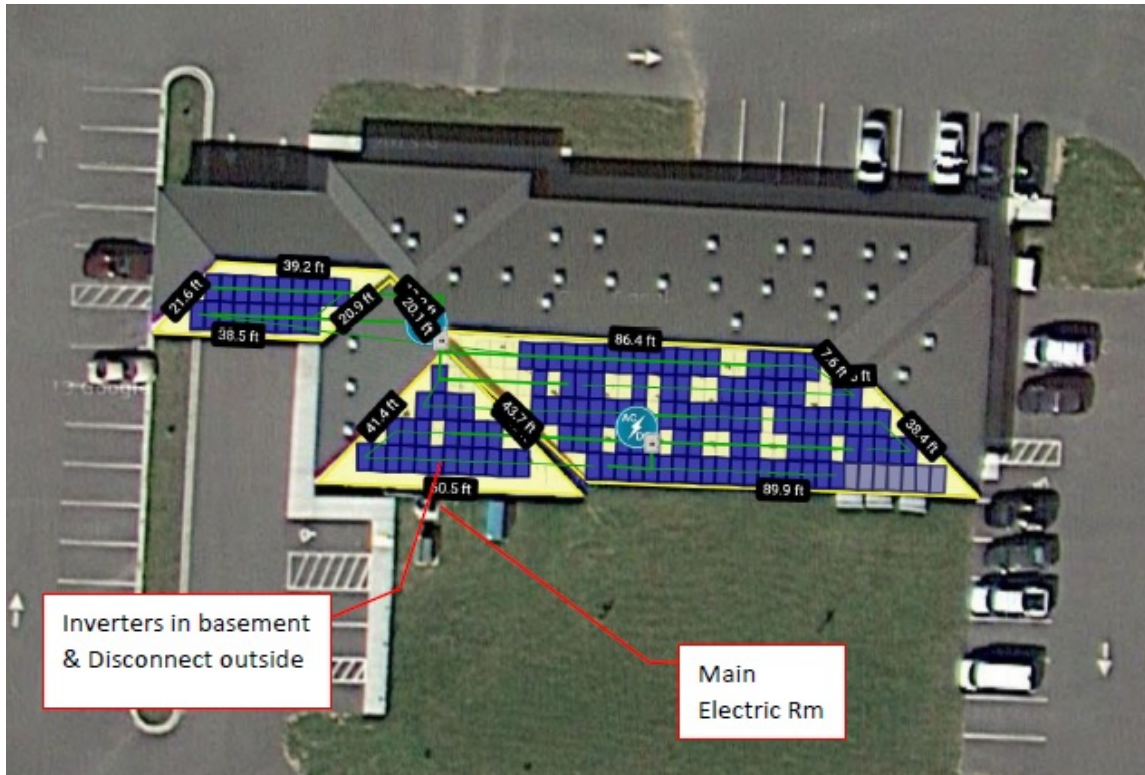
C-Store



- 47.5 kW
- 55,456 kWh/yr



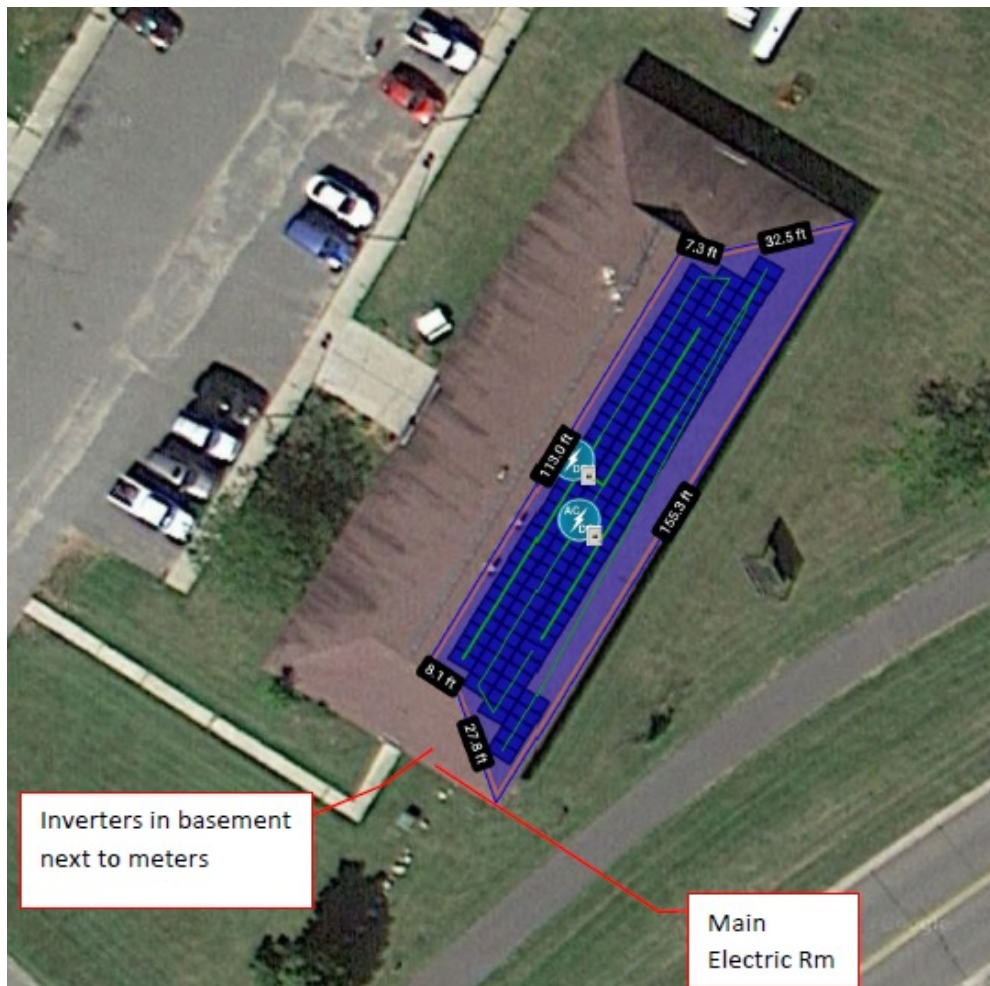
New Health Center



- 44.88 kW
- 55,224 kWh



Family Services



- 35.6 kW
- 40,640 kWh/yr



Wood Inc./Roads Building



- 26.4 kW
- 32,295 kWh/yr



Youth Rec Center



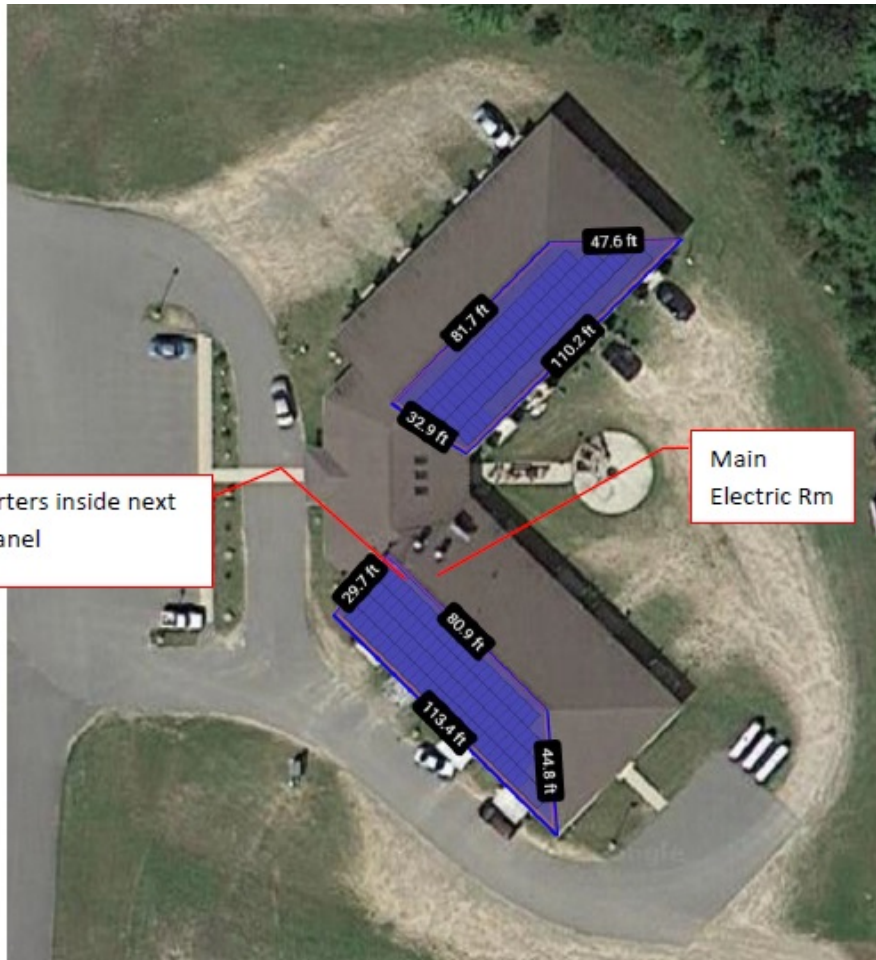
- 26.4 kW
- 32,220 kWh/yr

Main
Electric Rm

Inverters on exterior
wall next to array



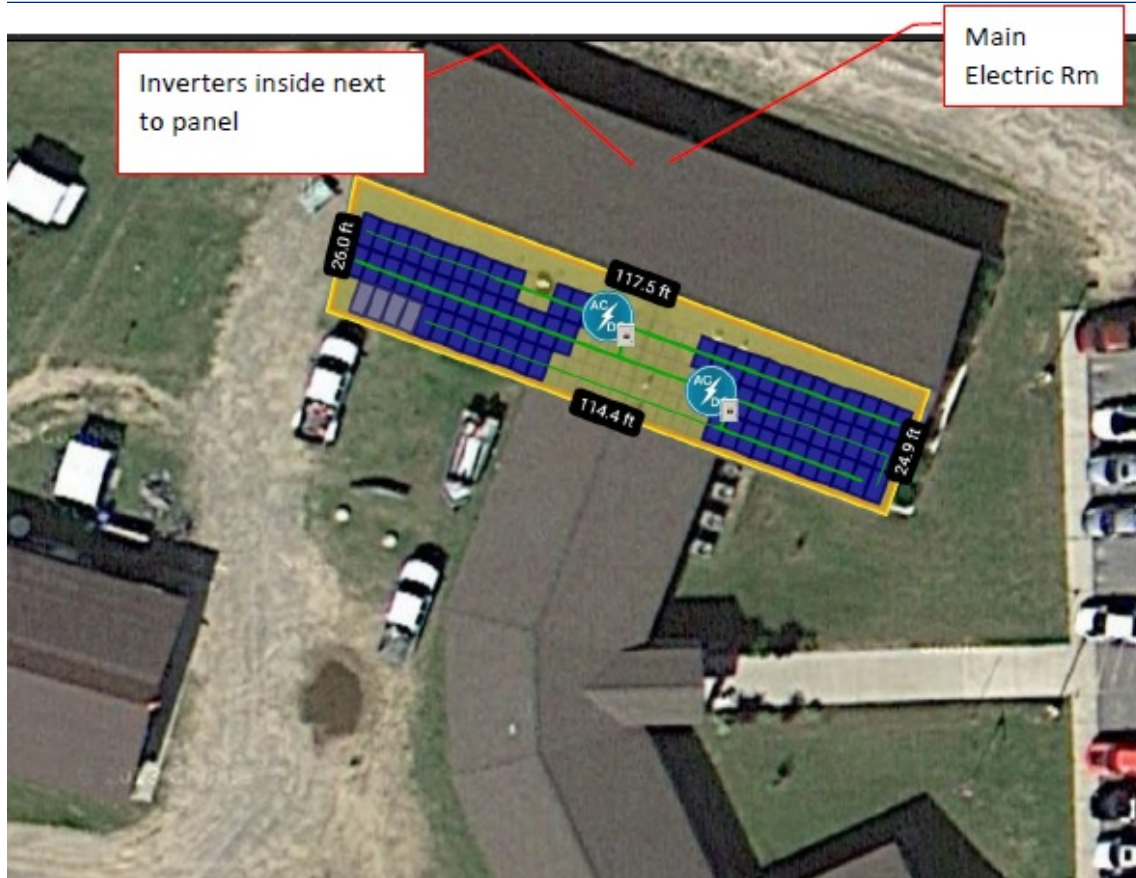
Elder/Senior Center



- 59.7 kW
- 84,885 kWh/yr



Tribal Administration



- 23.76 kW
- 28,483 kWh/yr



Apartment Complex



- 16.5 kW
- 18,795 kWh/yr



Housing Maintenance Building



- 15.84 kW
- 19,097 kWh/yr



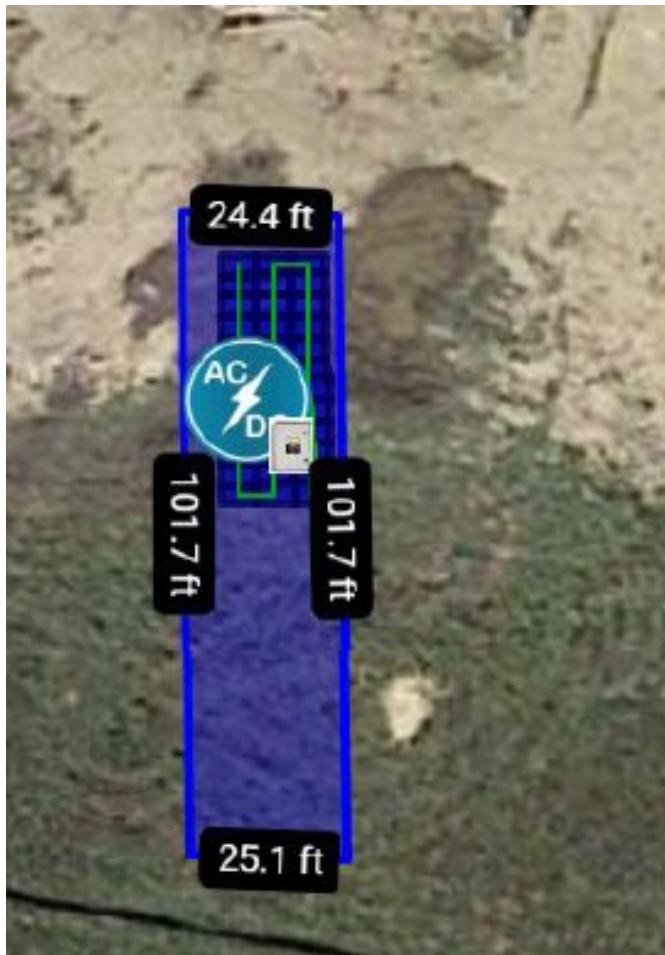
Recycling Building



- 11.88 kW
- 14,374 kWh/yr



Fish Hatchery Building



- 11.88 kW
- 11,930 kWh/yr



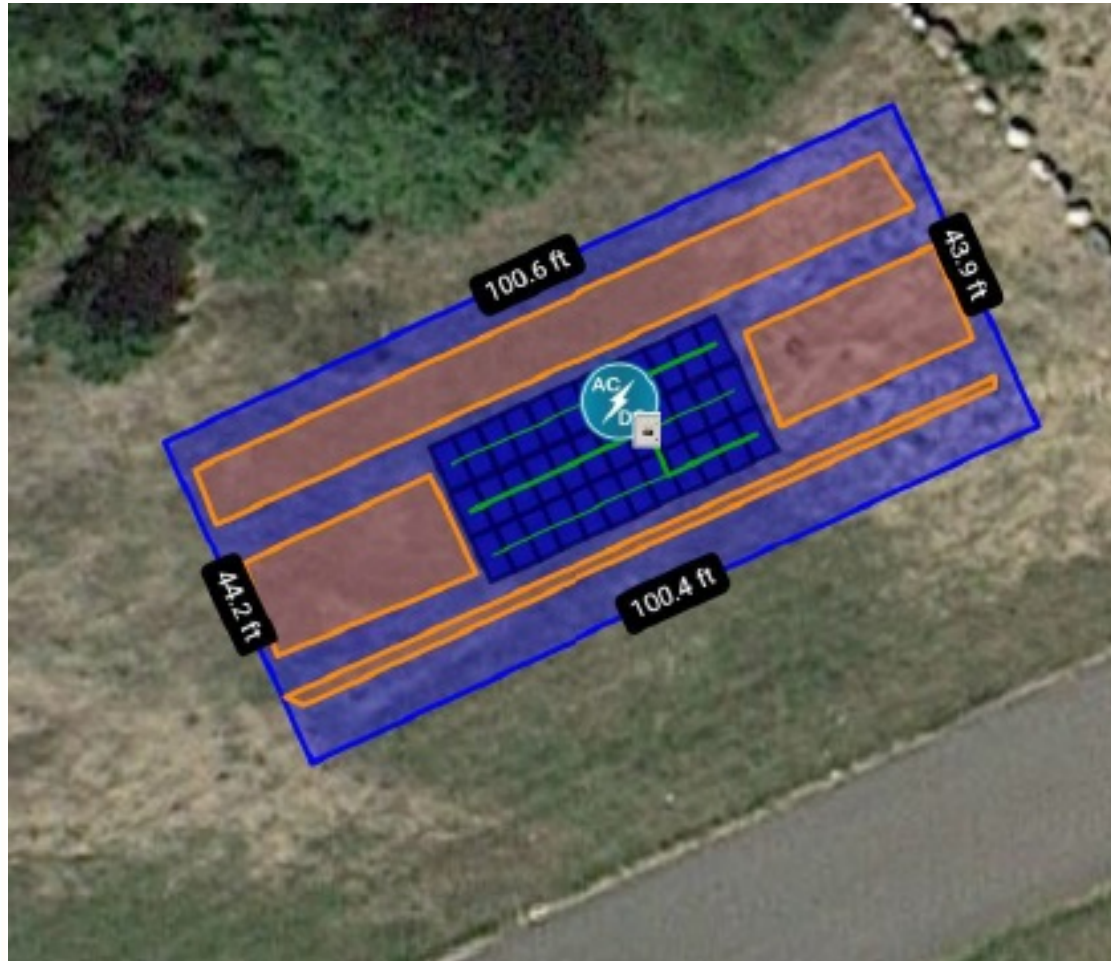
New Food Distribution Building



- 11.88 kW
- 14,374 kWh/yr



Cultural Building



- 11.88kW
- 13,925 kWh/yr



Housing Office



- 7.26 kW
- 8,708 kWh/yr

Thank You



Jeff Ackley, Jr
Jeff.ackley.jr@scc-nsn.gov
715-478-7628

John Clancy
jclancy@gklaw.com
414-287-9256

GODFREY & KAHN^{S.C.}

www • GKLAW.COM

**OFFICES IN MILWAUKEE, MADISON, WAUKESHA, GREEN BAY AND APPLETON, WISCONSIN
AND WASHINGTON, D.C.**

The presentation and materials are intended to provide information on legal issues and should not be construed as legal advice. In addition, attendance at a Godfrey & Kahn, S.C. presentation does not create an attorney-client relationship. Please consult the speaker if you have any questions concerning the information discussed during this seminar.