

Housing Energy Efficiency

AHFC Energy Programs and Resources

AHFC

Loans
Bonds
Financing
Public Housing
Energy
Grants

...and more!



HERS

Home Energy Rating System



BEES

Building Energy Efficiency Standard

BEES

Building Energy Efficiency
Standard

Promote construction of energy-
efficient buildings

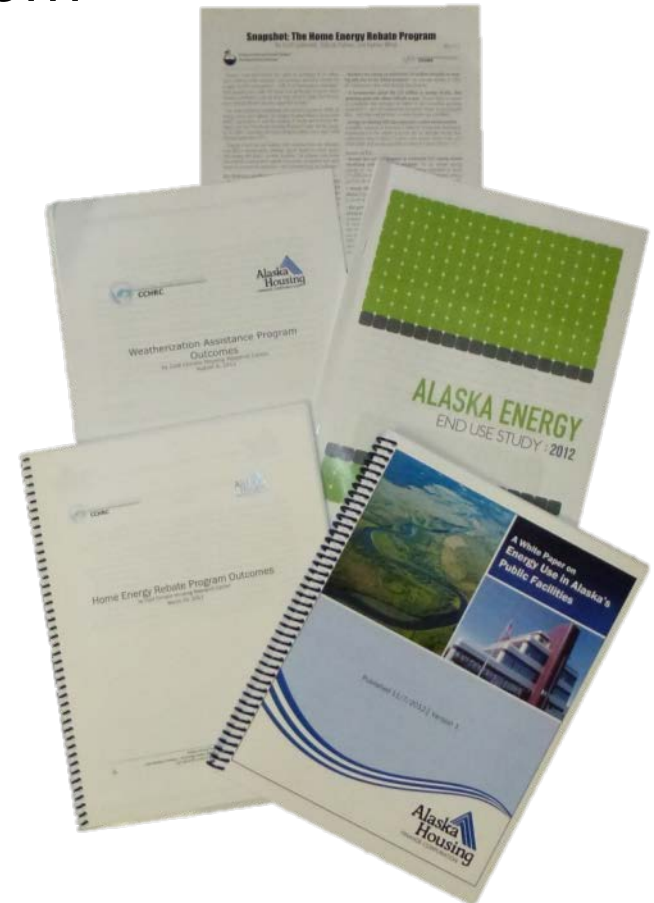
IECC 2012
ASHRAE 62.2
AK Amendments



ARIS

Alaska Retrofit Information System

- ❑ AHFC's ARIS database has become the clearinghouse for information on Alaska buildings
- ❑ More than 75,000 unique records
- ❑ Information from the database is used for policy decisions, research, program measurement, studies and reports, and much more



Energy Efficiency Home Valuation Tool



Outreach is underway to the industry including; Appraisers, Lenders, Realtors, Contractors, etc.

Energy Efficiency Education

Free workshops throughout the state and regularly in South-Central



Supplemental Housing Development Grant Program

Established 1981 to supplement HUD Indian Housing Development funds

Funds are used for:

- Water and sewer facilities
- Roads
- Electrical systems
- Energy efficiency measures

Employs local workers and buildings meet BEES



Weatherization Program

Health
and Safety

Energy
Efficiency

Homeowner
Education

Comfort

Building
Durability

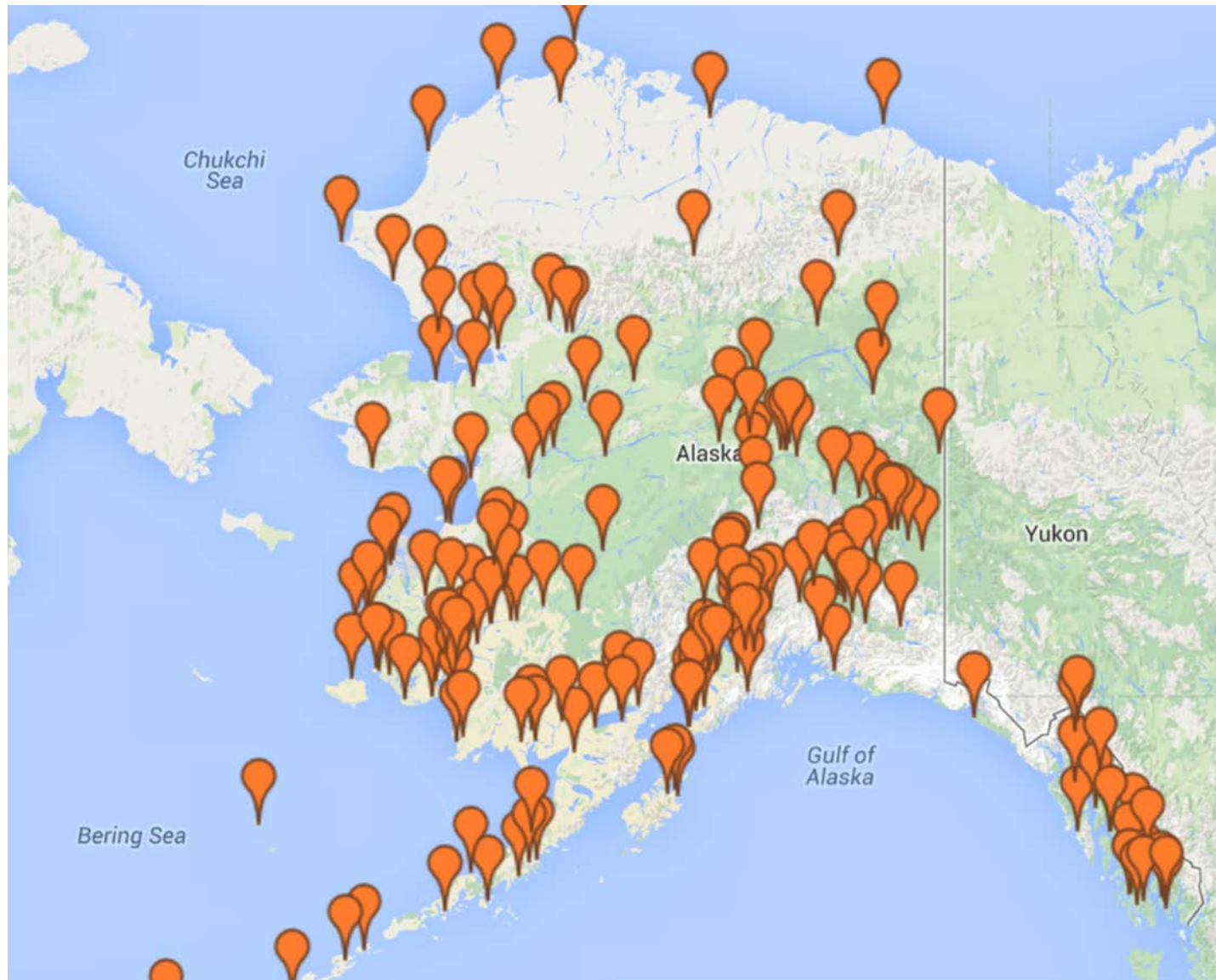


Photo Credit: Jimmy Ord

Weatherization Program by the Numbers



**13,380 homes are
more energy efficient
since 2008!**



FY 2014 INCOME LIMITS FOR ALASKA

Effective
December
18, 2013

Community Name	INCOME LIMIT - 1 PERSON	INCOME LIMIT - 2 PERSONS	INCOME LIMIT - 3 PERSONS	INCOME LIMIT - 4 PERSONS	INCOME LIMIT - 5 PERSONS	INCOME LIMIT - 6 PERSONS	INCOME LIMIT - 7 PERSONS	INCOME LIMIT - 8 PERSONS	EA ADDED FAMILY MEMBER
Anchorage Municipality Low Income Limit	59,500	69,900	76,500	84,900	91,700				
Aleutians East Borough Low Income Limit	51,700	59,100	66,500	73,800	79,800				
Aleutians West Census Low Income Limit	60,800	69,500	78,200	86,800	93,800				
Bethel Census Area Low Income Limit	55,200	63,100	71,000	78,800	85,200				
Bristol Bay Borough Low Income Limit	61,200	69,900	78,600	87,300	94,300				
Denali Borough Low Income Limit	64,000	73,100	82,200	91,300	98,700				
Dillingham Census Area Low Income Limit	51,700	59,100	66,500	73,800	79,800				
Fairbanks North Star Borough Low Income Limit	54,200	61,900	69,600	77,300	83,500	89,700	95,900	102,100	6,184
Haines Borough Low Income Limit	51,700	59,100	66,500	73,800	79,800	85,700	91,600	97,500	5,904
Hoonah-Angoon Census Area Low Income Limit	51,700	59,100	66,500	73,800	79,800	85,700	91,600	97,500	5,904
Juneau Borough Low Income Limit	66,600	76,100	85,600	95,100	102,800				
Kenai Peninsula Borough Low Income Limit	53,300	60,900	68,500	76,100	82,200				
Ketchikan Gateway Borough Low Income Limit	59,600	68,100	76,600	85,100	92,000				
Kodiak Island Borough Low Income Limit	51,700	59,100	66,500	73,800	79,800				
Lake and Peninsula Borough Low Income Limit	51,700	59,100	66,500	73,800	79,800				
Matanuska-Susitna Borough Low Income Limit	55,000	62,800	70,700	78,500	84,800				
Nome Census Area Low Income Limit	55,100	63,000	70,900	78,700	85,000				
North Slope Borough Low Income Limit	55,200	63,100	71,000	78,800	85,200	91,500	97,800	104,100	6,304
Northwest Arctic Borough Low Income Limit	51,700	59,100	66,500	73,800	79,800	85,700	91,600	97,500	5,904
Petersburg Census Area Low Income Limit	59,400	67,900	76,400	84,800	91,600	98,400	105,200	112,000	6,784
Prince of Wales-Hyder Census Low Income Limit	51,700	59,100	66,500	73,800	79,800	85,700	91,600	97,500	5,904
Sitka City & Borough Low Income Limit	55,100	63,000	70,900	78,700	85,000	91,300	97,600	103,900	6,296
Skagway Municipality Low Income Limit	61,000	69,700	78,400	87,100	94,100	101,100	108,100	115,000	6,968
Southeast Fairbanks Census Area Low Income Limit	51,700	59,100	66,500	73,800	79,800	85,700	91,600	97,500	5,904
Valdez-Cordova Census Low Income Limit	57,000	65,100	73,200	81,300	87,900	94,400	100,900	107,400	6,504
Wade Hampton Census Area Low Income Limit	51,700	59,100	66,500	73,800	79,800	85,700	91,600	97,500	5,904
Wrangell City and Borough Census Area Low Income Limit	51,700	59,100	66,500	73,800	79,800	85,700	91,600	97,500	5,904
Yakutat City & Borough Low Income Limit	59,200	67,600	76,100	84,500	91,300	98,100	104,800	111,600	6,760
Yukon-Koyukuk Census Area Low Income Limit	51,700	59,100	66,500	73,800	79,800	85,700	91,600	97,500	5,904
2014 DOE Poverty Income Levels-FINAL	29,160	39,320	49,480	59,640	69,800	79,960	90,120	100,280	10,160

\$59,500
1 Person in Anchorage

\$29,160
DOE Income Level

Home Energy Rebate Program

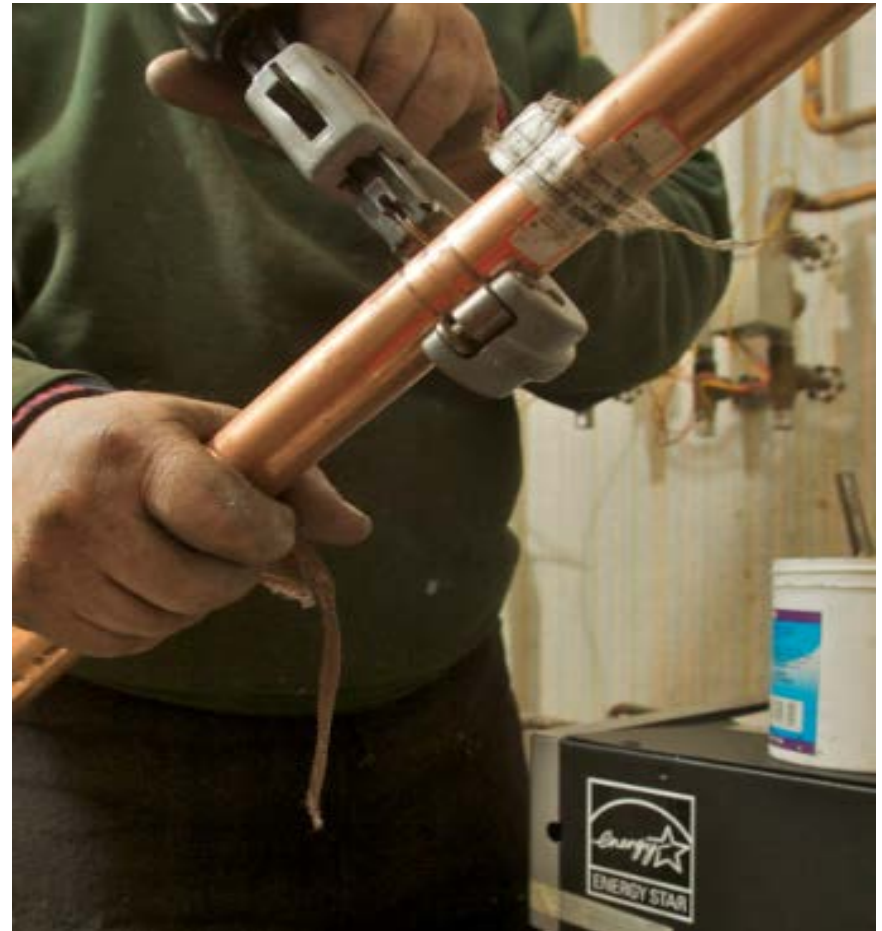
Open to all Alaskans

No income requirements

Owner-occupied, year-round residences

Homeowners pay upfront and are then rebated

“As-Is & Post” energy ratings



AHFC Stock Photo

Home Energy Rebate by the Numbers



20,859

Rebates for Existing
Homes

2,277

Rebates for Newly
Constructed Energy
Efficient Homes

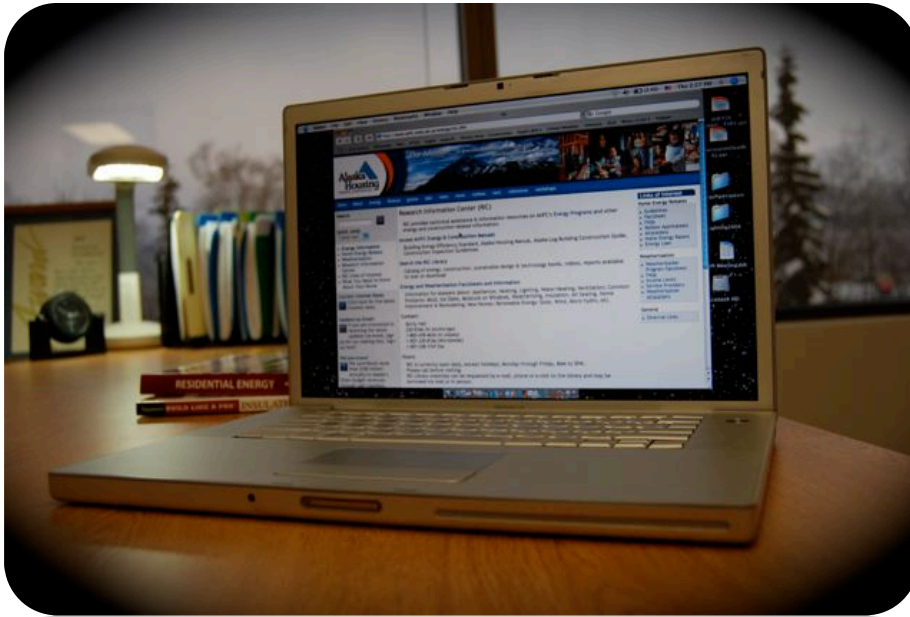
New Home Rebate for New Construction



Rebates
Total Expended

More than 2,173
\$15 million

Information on Energy-Efficiency



Good information makes for good decisions.
It's up to you!

Go online and search the library of
information:

AHFC Research Information Center

<http://www.ahfc.us/energy/ric.cfm>

Call 1-800-478-4636

or 1-907-330-8166

8AM-5PM, Monday–Friday,

except holidays

Appointment Recommended

Federal Tax Credits

www.energystar.gov

Federal Tax Credits for Consumer Energy Efficiency

Please note, not all ENERGY STAR qualified products qualify for a tax credit. ENERGY STAR distinguishes energy efficient products which, although they may cost more to purchase than standard models, will pay you back in lower energy bills within a reasonable amount of time, without a tax credit.

What You Need to Know

- ▾ What is included in the 2012 and 2013 Federal Tax Credit?
- ▾ How do I apply for my Federal Tax Credit?

What is included in the 2012 and 2013 Federal Tax Credit?

The following applies to the 6 product categories below:

Tax Credit: 10% of cost up to \$500 or a specific amount from \$50–\$300

Expires: December 31, 2013

Details: Must be an existing home & your [principal residence](#). New construction and rentals do not qualify.

- ▶ Biomass Stoves
- ▶ Heating, Ventilating, Air Conditioning (HVAC)
- ▶ Insulation
- ▶ Roofs (Metal & Asphalt)
- ▶ Water Heaters (non-solar)
- ▶ Windows & Doors

The following applies to the 3 product categories below:

Tax Credit: 30% of cost with no upper limit

Expires: December 31, 2016

Details: Existing homes & new construction qualify. Both [principal residences](#) and second homes qualify. Rentals do not qualify.

- ▶ Geothermal Heat Pumps
- ▶ Small Wind Turbines (Residential)
- ▶ Solar Energy Systems

The following applies to the single product category below:

Tax Credit: Credit Details: 30% of the cost, up to \$500 per .5 kW of power capacity

Expires: December 31, 2016

Details: Existing homes & new construction qualify. Must be your [principal residence](#). Rentals and second homes do not qualify.

- ▶ Fuel Cells (Residential Fuel Cell and Microturbine System)