

# Confederated Salish and Kootenai Tribes

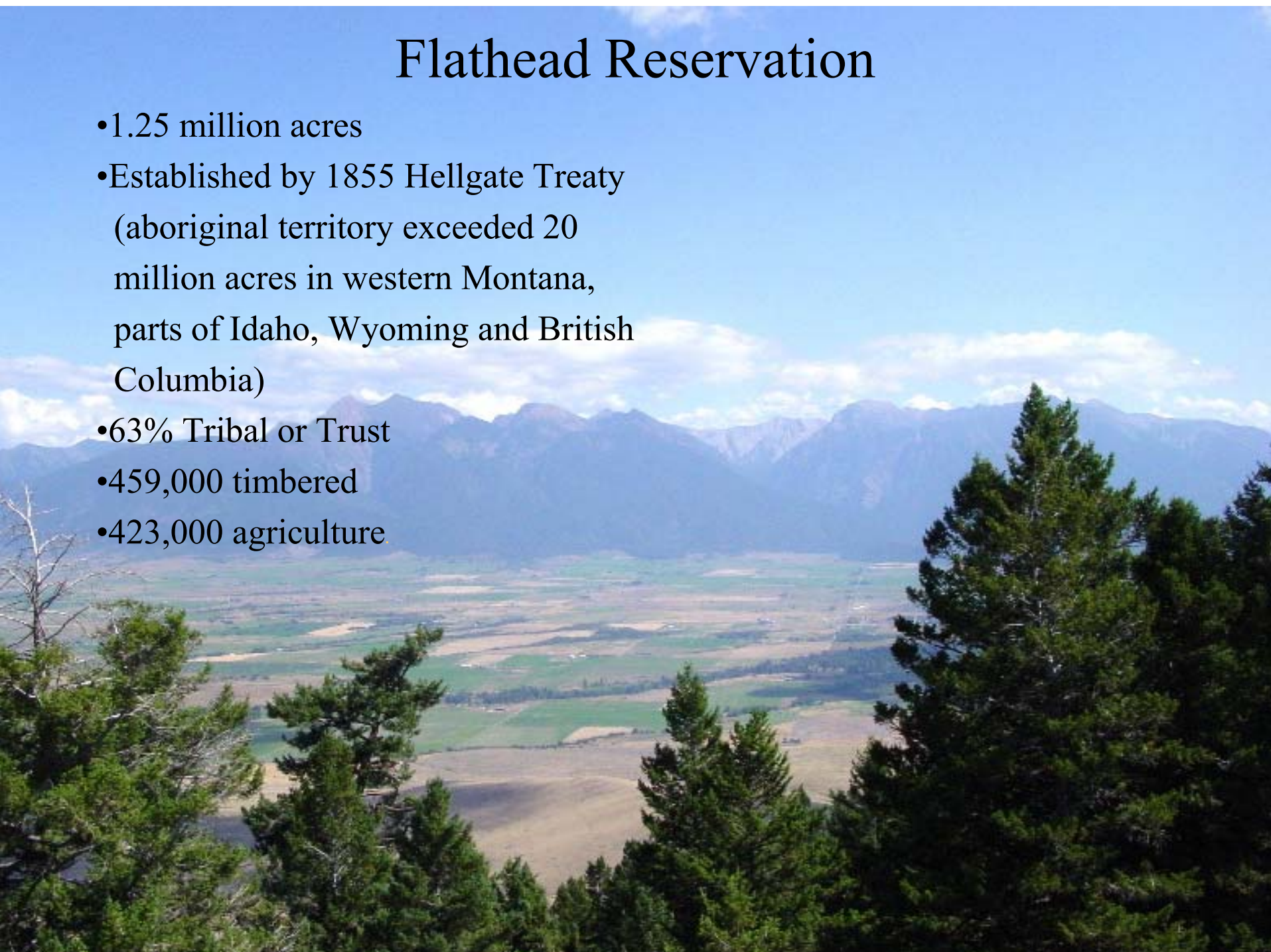
Comprised of:

- Bitterroot Salish
- Pend d' Oreille
- Kootenai



# Flathead Reservation

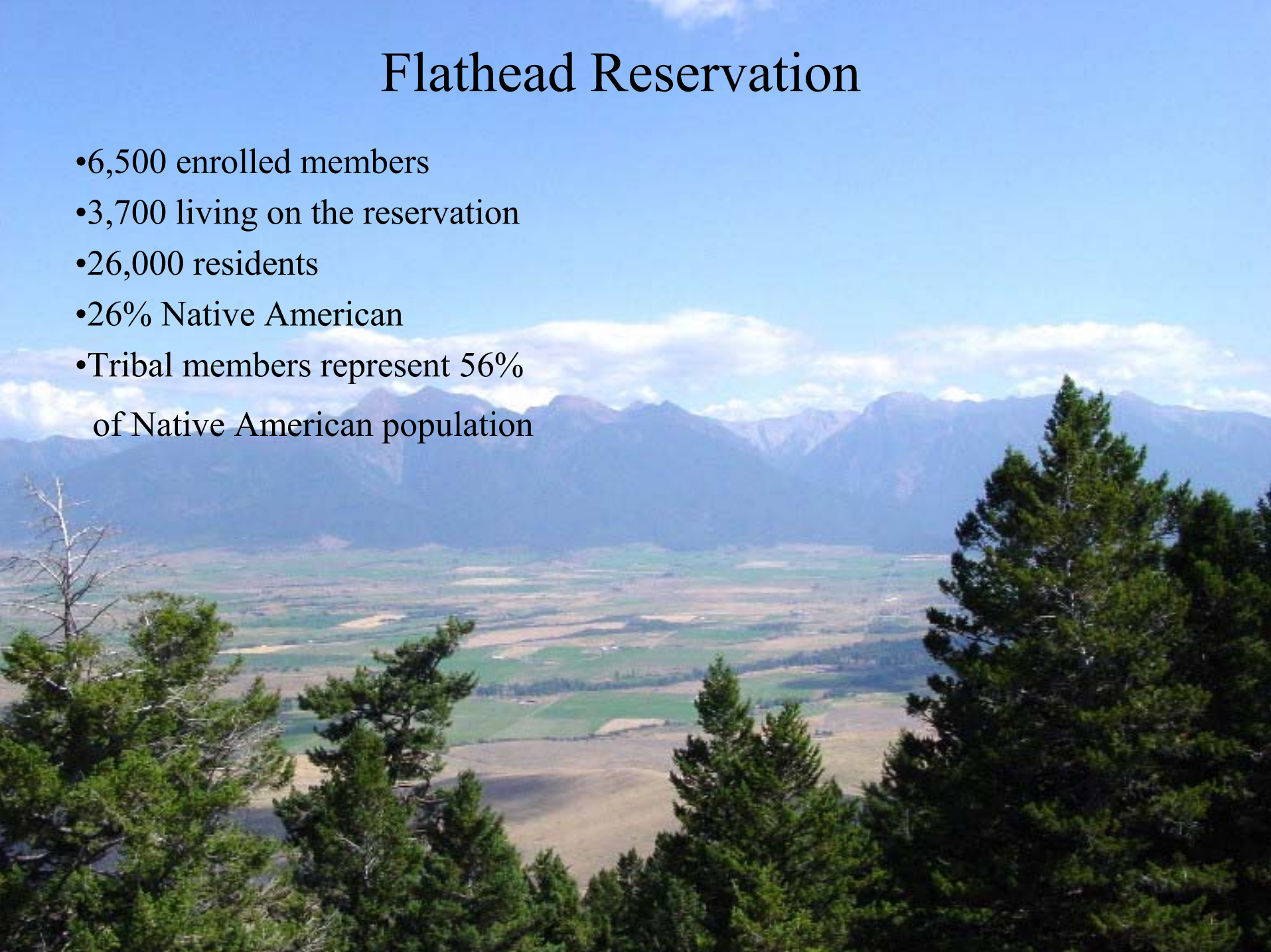
- 1.25 million acres
- Established by 1855 Hellgate Treaty (aboriginal territory exceeded 20 million acres in western Montana, parts of Idaho, Wyoming and British Columbia)
- 63% Tribal or Trust
- 459,000 timbered
- 423,000 agriculture





# Flathead Reservation

- 6,500 enrolled members
- 3,700 living on the reservation
- 26,000 residents
- 26% Native American
- Tribal members represent 56%  
of Native American population





Kalispell

**FLATHEAD RESERVATION**

Missoula

Helena

Butte

Bozeman

Billings

Miles City

Great Falls

Havre

MONTANA

93

2

90

3

15

20

200

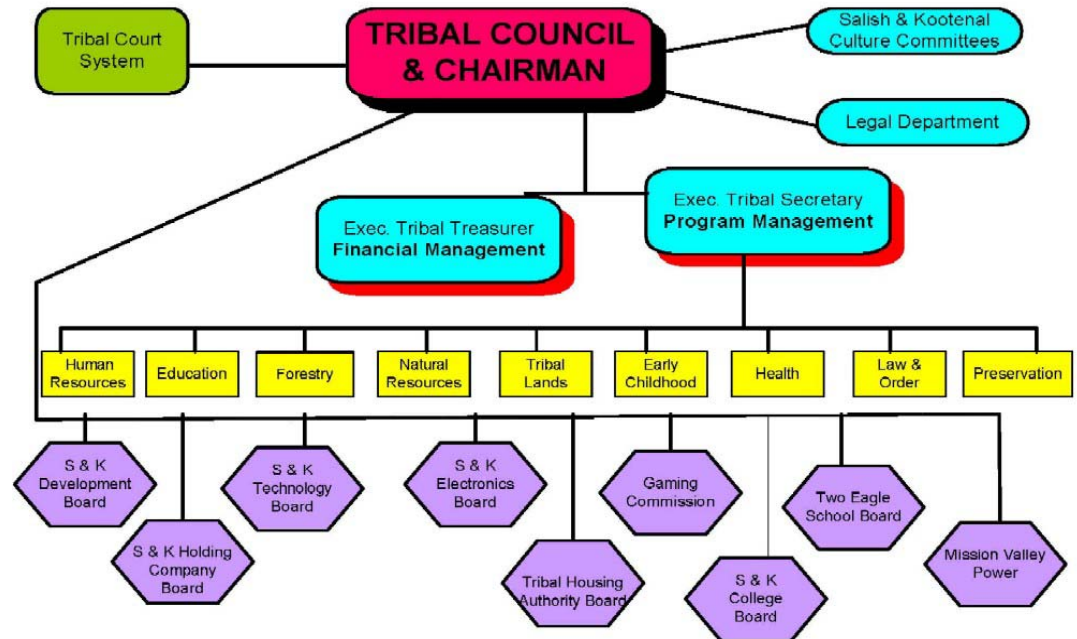
2

94

90

# Tribal Council

- 10 Tribal Council members
- 7 Districts
- 4 Year terms
- Staggered elections  
(5 positions every 2 years)



## CONFEDERATED SALISH & KOOTENAI TRIBAL GOVERNMENT

Approved: 29 March 2000

Tribal Lands Dept. Approved: 16 Oct. 2001

# S & K Holding Company, Inc.

- Created 1992 under Tribal Authority
- Promote economic independence by maximizing economic opportunities for the Tribe and Tribal members in a culturally appropriate manner.
- Focus efforts on creating economic opportunities for the most disadvantaged Tribal members. (TANF, GA)



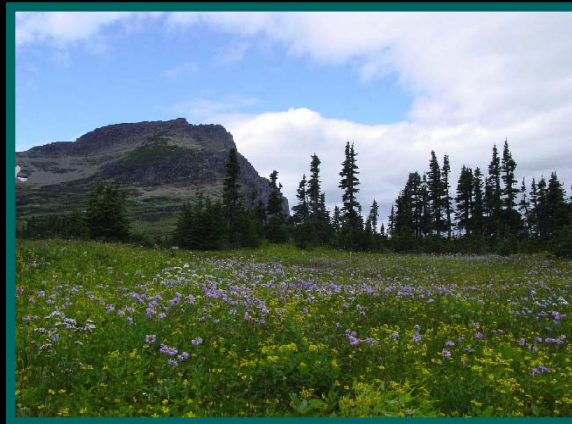




# S&K Electronics

---

53347 Hwy. 93  
Ronan, MT 59864  
(406) 883-6241  
Fax: (406) 883-6228  
Info@skecorp.com



## **A TDMS Company**

### ***“Technology Development Manufacturing Services”***

- Certified Small Disadvantaged and HUBZone Company, Established in 1984
- Corporate HQ Located on Flathead Indian Reservation in Montana
- Corporate Goals & Objectives Include Profitability with Long Term, Sustained Employment
- Product Solutions: Mechanical Design, SolidWorks, SolidDesign, AutoCAD, Catia & ProE, Experience Electronic/Electrical Design, Software Solutions



***S&K Technologies, Inc.***  
***P.O. Box 339***  
***St. Ignatius, MT 59865***

***406.745.7500***

***[www.skcorp.com](http://www.skcorp.com)***

- SBA 8(a) Certified
- Began as division of S & K Electronics in 1997
- 100% owned by Confederated Salish and Kootenai Tribes
- Incorporated in 1999
- Aerospace and Information Technology Markets Pursued Nationwide to Increase the Availability of On-Reservation Employment



FLATHEAD RENEWABLE ENERGY  
FEASIBILITY STUDY

Award Number DE-FG36-04G014024

Department of Energy  
Golden Field Office  
1617 Cole Boulevard  
Golden, CO 80401

# **DISGEN**

**Distributed Generation Systems, Inc.**

**DISGEN IS:**

**-A COLORADO BASED PRIVATE WIND POWER DEVELOPER WITH APPROXIMATELY 1500MW OF WIND PROJECTS IN DEVELOPMENT IN 11 STATES**

**-A WIND DEVELOPMENT CONSULTANT TO NATIVE AMERICAN TRIBES, UNITED STATES GOVERNMENT, STATE GOVERNMENTS, PRIVATE UTILITIES**



**Distributed Generation Systems, Inc.**

## **DISGEN'S CURRENT TRIBAL CLIENTS**

- KAW NATION/OKLAHOMA, COMPLETED FEASIBILITY STUDY**
- NORTHERN CHEYENNE/MONTANA, COMPLETED FEASIBILITY STUDY, CURRENT DEVELOPMENT STUDY/30MW WIND FARM**
- ROSEBUD SIOUX/SOUTH DAKOTA, ASSISTED IN DEVELOPMENT OF THE ROSEBUD SIOUX TURBINE PROJECT, CURRENT DEVELOPMENT STUDY/30MW WIND FARM**
- MENOMINEE/WISCONSIN, CURRENT RENEWABLE RESOURCE ASSESSMENT STUDY**
- FLATHEAD/MONTANA, CURRENT FEASIBILITY STUDY**
- 3 AFFILIATED TRIBES/NORTH DAKOTA, CURRENT FEASIBILITY STUDY**
- CROW NATION/MONTANA, WIND RESOURCE ASSESSMENT**
- SAGINAW CHIPPEWA TRIBE/MICHIGAN, CURRENT FEASIBILITY STUDY**
- ROCKY BOY/MONTANA, CURRENT FEASIBILITY STUDY**
- SEVERAL OTHER TRIBAL CONTRACTS**

## Project Objectives

1. Assess Wind, solar, biomass and pumped storage resources on tribal lands.
2. Assess the potential environmental impacts of renewable development.
3. Assess the transmission capacity and capability of renewable energy project.
4. Establish economic models for tribal consideration.
5. Define economic, cultural and social impacts to the Tribes.
6. Conduct, at tribal direction, discussions with power purchases and RUS.
7. Submit a final report on activity.



# Wind Assessment Accomplishments

- Surveyed reservation and selected 5 sites to evaluate for met tower placement
- Conducted two site visits for met tower placement evaluation and environmental work
- Selected the Salish Mountains (ridgeline) west of Flathead Lake to install met tower and equipment on a communications tower. The equipment will also include solar assessment sensors. Site is high, has transmission crossing it and good evidence of wind (tree flagging)
- Began Phase 1 Avian Assessment with a site visit and literature search. The Salish Mountains are a potential bird habitat thus the Tribe is requiring bird deflectors on the met tower guy wires
- Met tower to be installed the week of October 18, 2004
- Equipment to be installed on the communications tower the week of October 25, 2004







# Other Feasibility Study Accomplishments

- Held preliminary meetings with Mission Valley Power, the local utility
- Began evaluation of pumped hydro potential as well as beginning investigation into the use of the Kerr Dam tailrace as a potential source of energy production
- Made preliminary contact with the Tribe's Forestry division regarding the biomass aspect of the feasibility study
- Investigating potential for obtaining a small wind turbine from a University