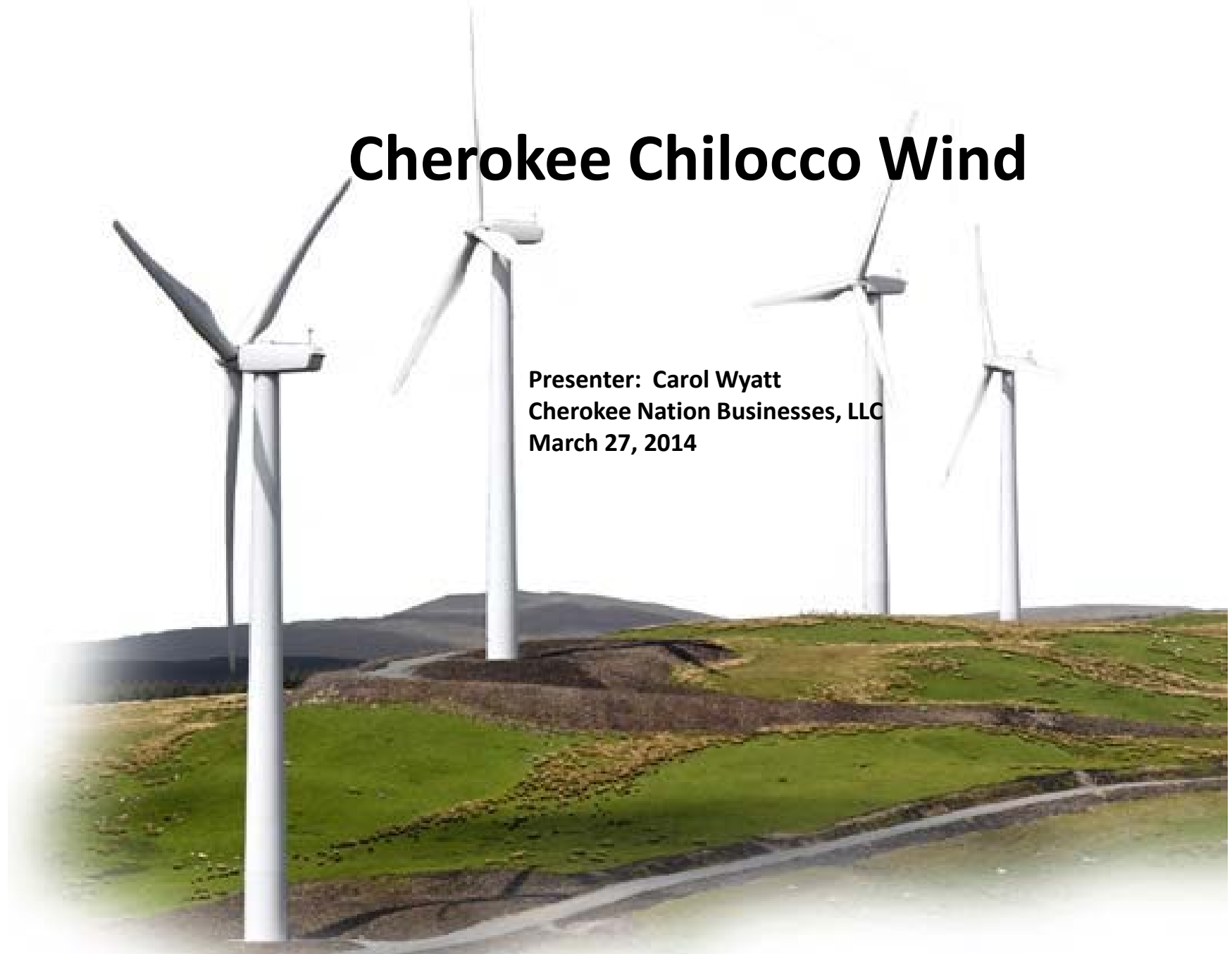
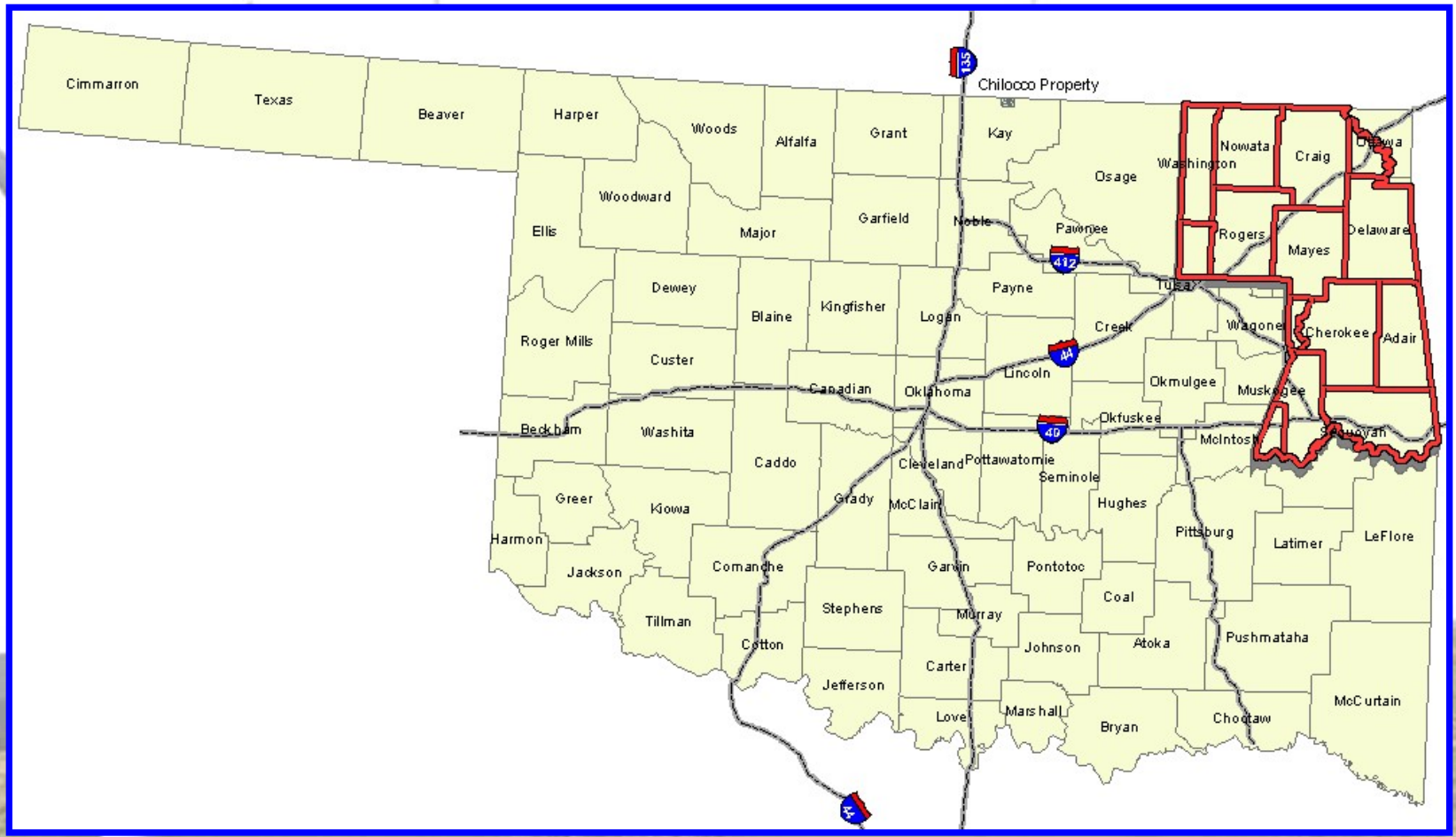
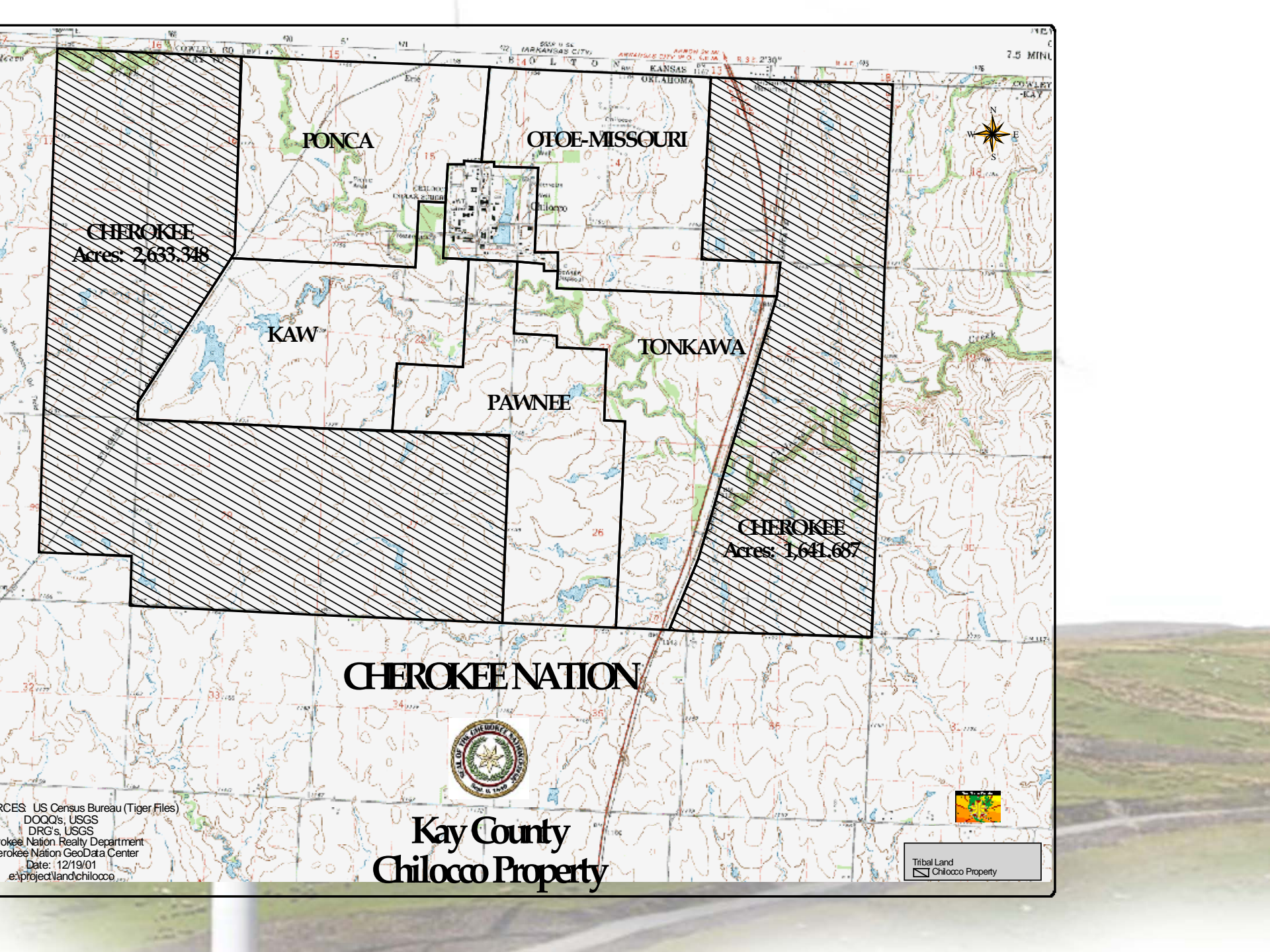


# Cherokee Chilocco Wind

**Presenter: Carol Wyatt  
Cherokee Nation Businesses, LLC  
March 27, 2014**







7.5 MINUTE

PONCA

OJOE-MISSOURI

CHEROKEE  
Acres: 2,633,348

KAW

TONKAWA

PAWNEE

CHEROKEE  
Acres: 1,641,687

CHEROKEE NATION



Kay County  
Chilocco Property

Tribal Land  
Chilocco Property

RCES: US Census Bureau (Tiger Files)  
DOQQ's, USGS  
DRG's, USGS  
Cherokee Nation Realty Department  
Cherokee Nation GeoData Center  
Date: 12/19/01  
e:\project\land\chilocco





## **Accomplishments:**

- **Feasibility study**
- **Business plan & white paper**
- **Completed wind resource assessment**
- **Conducted turbine comparison**
- **Southwest Power Pool interconnect**
- **Environmental studies**
- **Engaged PNE Wind for development**
  - **Power Purchase Agreements (PPAs)**
  - **Finalized firm transmission studies**

# ENVIRONMENTAL

- Spring Avian ✓
- ABB study ✓
- Fall Avian ✓
- Eagle study ✓
- Bat study ✓
- Archaeological / cultural studies ✓
- Section 7 – endangered species ✓
- Environmental assessment (EA) ✓
- Surveying / topographical ✓
- BIA approval - trust property



## **OBSTACLES:**

- **Leadership changes with developer**
- **Several changes in agreements**
  - **Contracts (leases, budgets, ownership)**
  - **Need to present again to Council**
- **Waiting for PTC extension**
- **Senate Bill 1440**
  - **Blocking wind farm development East of I-35**