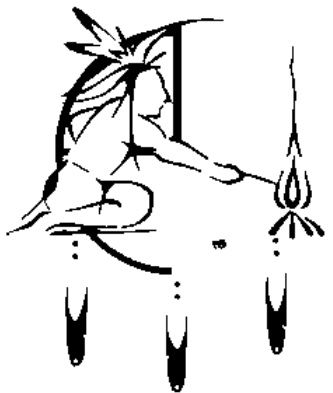

Potawatomi Bingo Casino Parking Structure Lighting Project

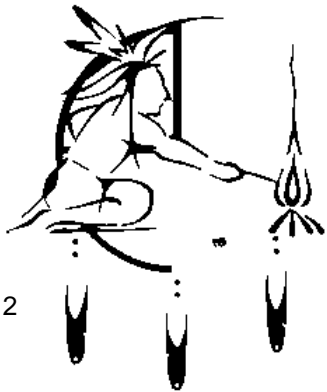
Department of Energy
Tribal Energy Program Review
October 27, 2010

Dave Brien
Director of Facilities
Potawatomi Bingo Casino
Milwaukee, Wisconsin



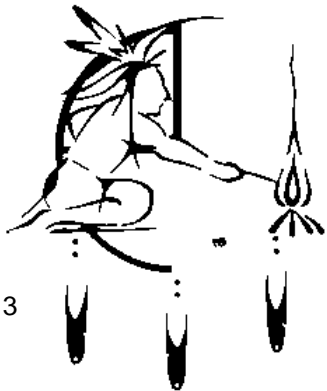
Forest County Potawatomi Community Potawatomi Bingo Casino

- In June 2008, the Tribe's Potawatomi Bingo Casino in Milwaukee completed its expansion, tripling the size of the Casino.
- The expansion incorporated energy efficient design. The Casino now uses 12.5% less energy per square foot than pre-expansion.



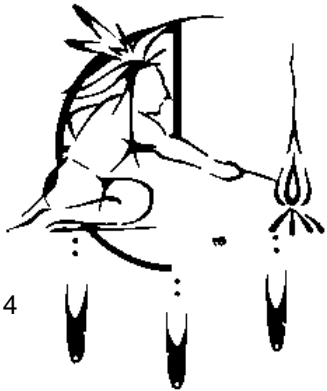
Parking Structure Lighting Project

- The Casino expansion more than doubled the size of its six-story parking structure to 1,046,640 sq. ft.
- The parking ramp is lit 24-hours/day.



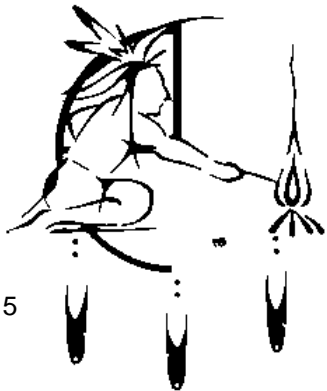
Parking Structure Lights

- The Project replaced the old 205W Metal Halide-type lights in the parking ramp area and in Valet Parking with . . .



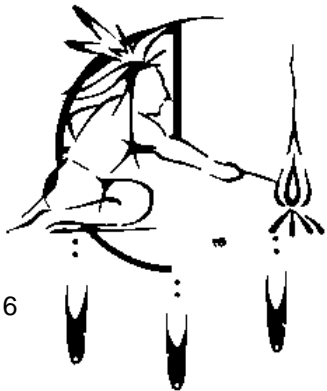
Parking Structure Lights

- 1,664 new energy-efficient 55W LED lights.



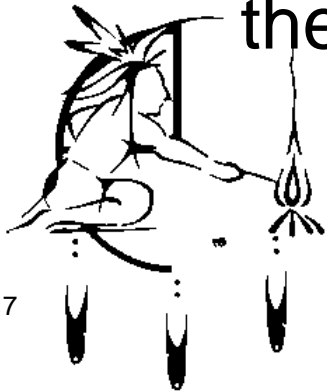
Parking Structure Lights

- Lighting fixtures include a 10-year warranty that reduces maintenance costs \$7,000 annually for 10 years.
- LED lights have a longer life that will reduce long-term maintenance costs.



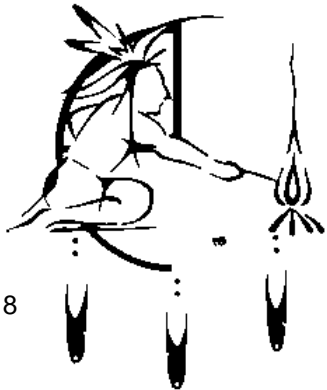
Parking Structure Lighting Project Budget

- Total project cost is \$945,712 with \$472,856 support from U.S. Department of Energy Tribal Energy Program.
- Leveraged DOE funding to receive a substantial rebate from the Wisconsin Focus on Energy program.
- Anticipated pay-back to Tribe for its portion of the costs will be within two years of installation.



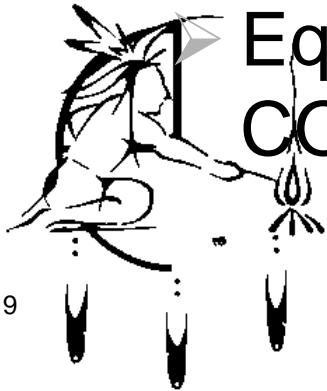
Parking Structure Lighting Project Status

- Project was approved on June 24, 2010.
- All lights in the ramp area of the Parking Structure were replaced by September 30.
- 56 light fixtures remain to be installed in other areas of the Parking Structure.
- Project will be complete by the end of 2010.

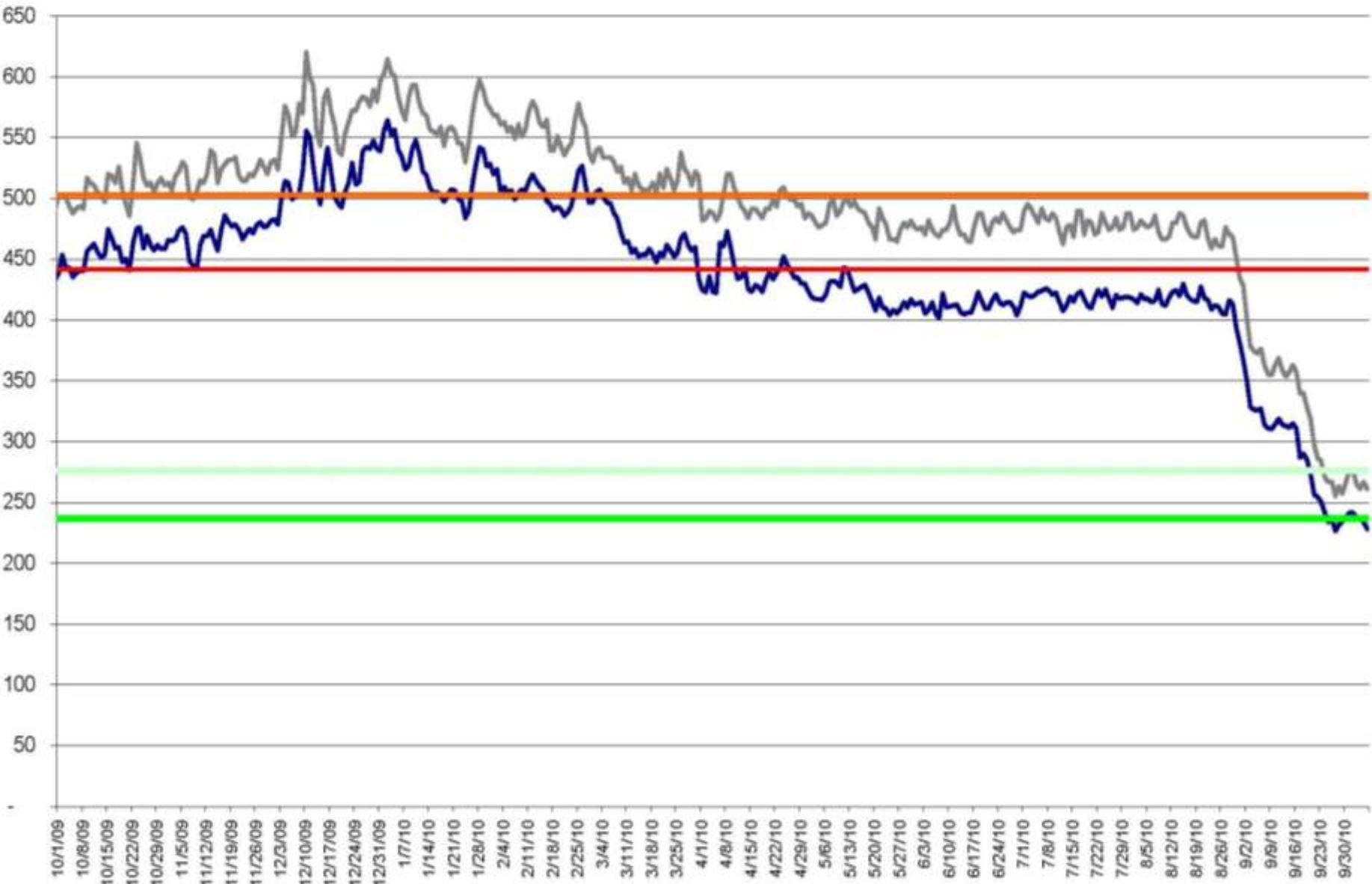


Parking Structure Lighting Energy Savings

- A 245.7 kW reduction in peak demand has already been measured.
- Total anticipated energy usage reduction of 2,260,080 kWhr/yr or 7,714 MMBtu/yr.
- Represents 54% reduction in energy use for the Parking Structure and 4% reduction in the Tribe's overall energy use.
- Equates to an annual reduction of 1,900 tons CO₂ emissions.



MKE Parking Structure Electric Profile - 10/1/2009 Week Compared to w/LED Week 9/30/2010



Potawatomi Bingo Casino

Next Steps

- **Since 2007, the Tribe has initiated 23 Casino energy efficiency projects valued at over \$2.5 million.**
- **These projects combined are expected to realize energy savings of 5,000,000 kWhr/yr and 50,000 therms.**
- **Equates to reduced emissions of approximately 5000 tons CO₂/year.**
- **Additional 17 projects are being studied or planned.**
- **Feasibility studies for two major renewable energy projects have been completed.**

