

# **Cherokee Wind**



**Presenter: Carol Wyatt**

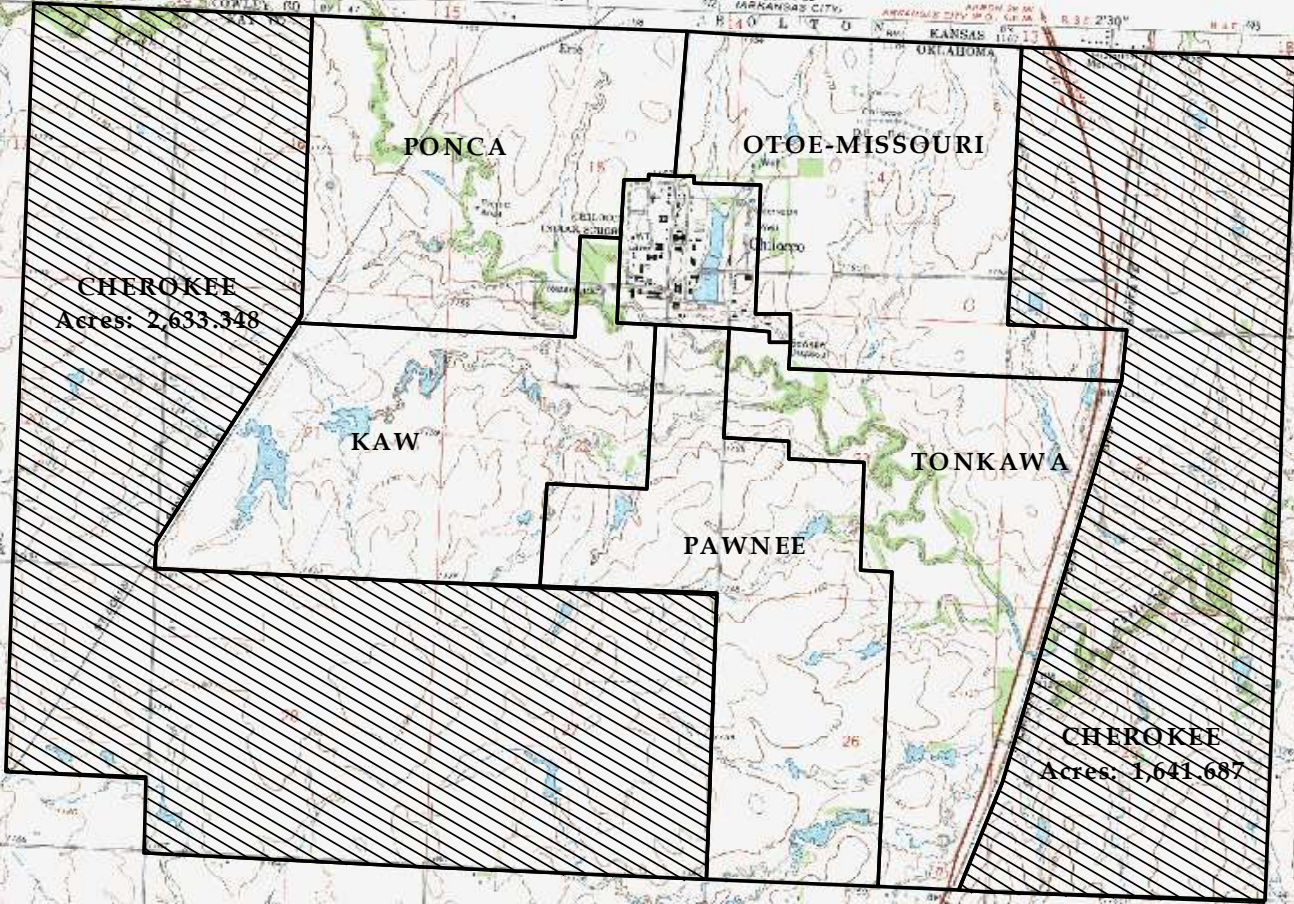
**Cherokee Nation Businesses, Inc.**

**DOE Tribal Energy Program**

**October 26, 2010**







# CHEROKEE NATION



## Kay County Chilocco Property



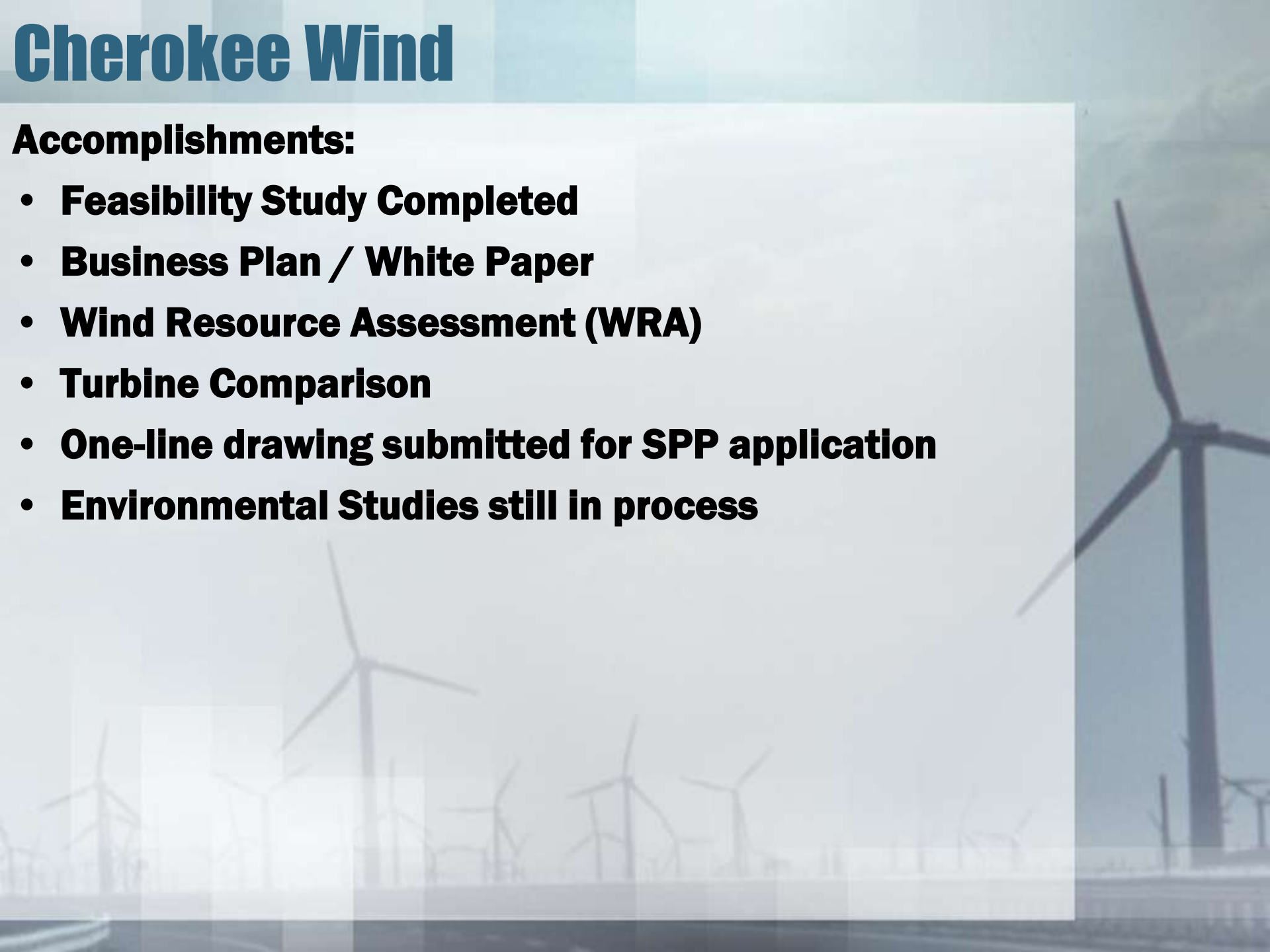
Tribal Land  
 Chilocco Property

DATA SOURCES: US Census Bureau (Tiger Files)  
 DOQQ's, USGS  
 DRG's, USGS  
 Cherokee Nation Realty Department  
 Cherokee Nation GeoData Center  
 Date: 12/19/01  
 e:\project\land\chilocco

# Cherokee Wind

## Accomplishments:

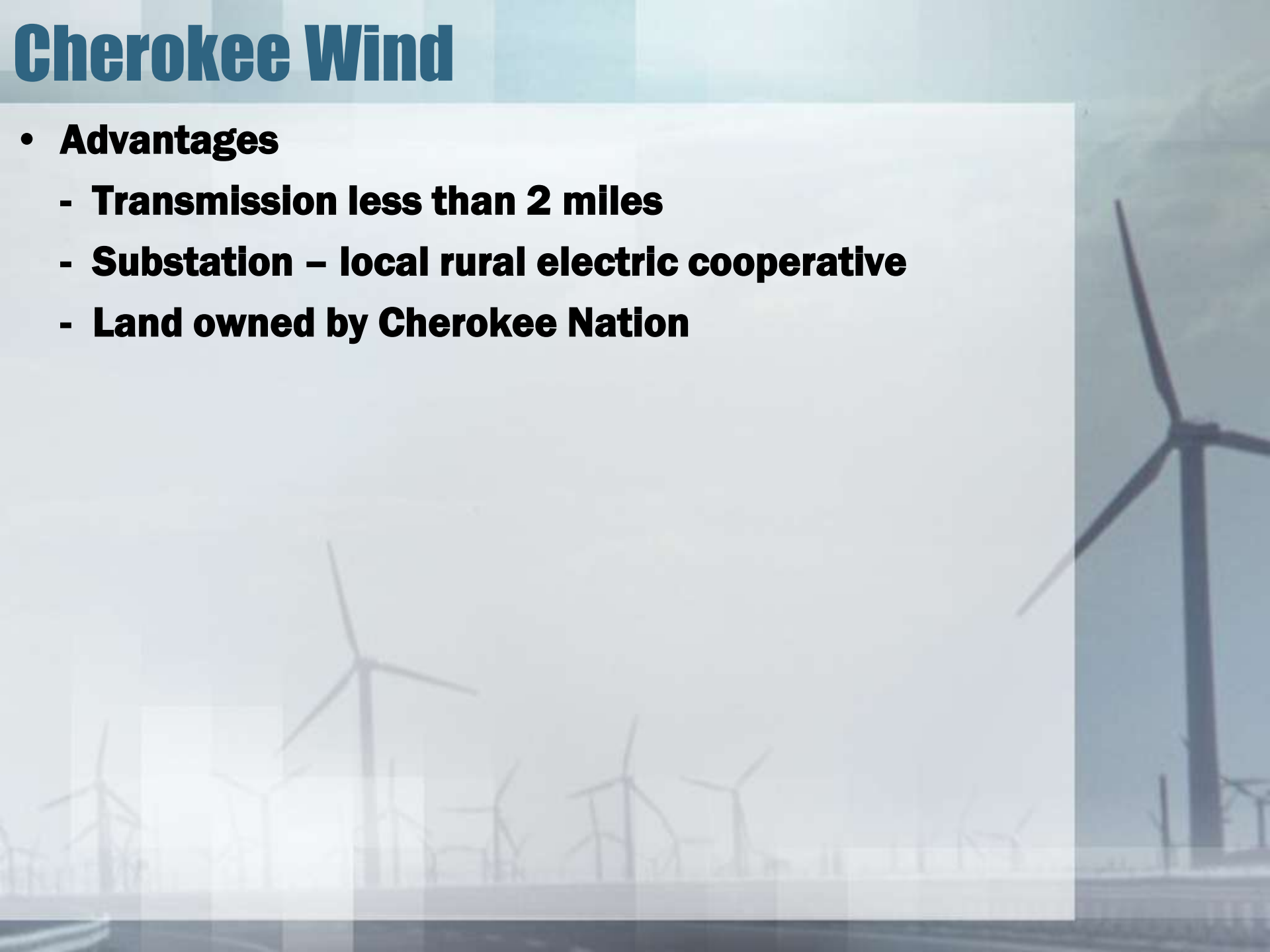
- **Feasibility Study Completed**
- **Business Plan / White Paper**
- **Wind Resource Assessment (WRA)**
- **Turbine Comparison**
- **One-line drawing submitted for SPP application**
- **Environmental Studies still in process**





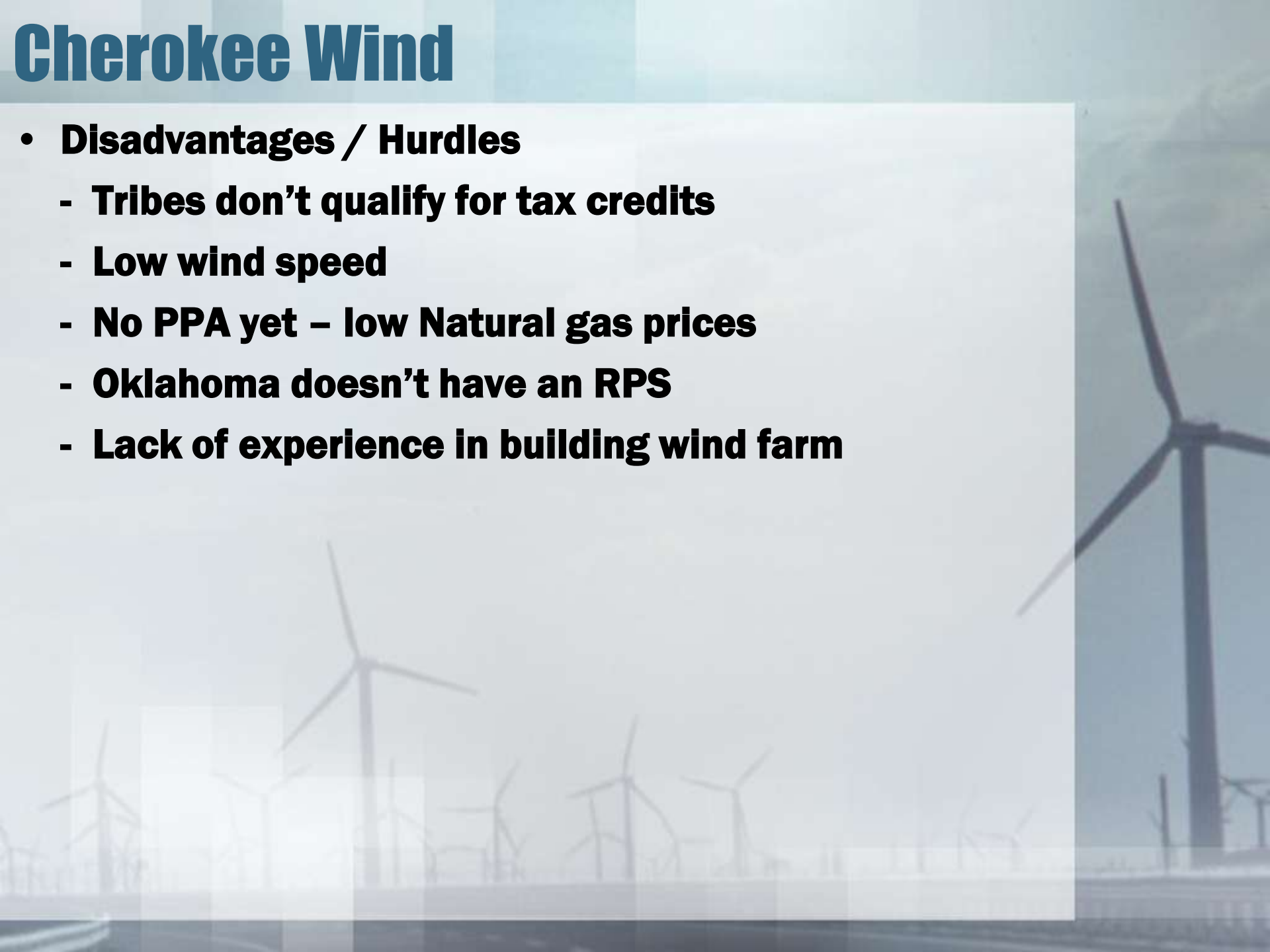
# Cherokee Wind

- **Advantages**
  - **Transmission less than 2 miles**
  - **Substation – local rural electric cooperative**
  - **Land owned by Cherokee Nation**



# Cherokee Wind

- **Disadvantages / Hurdles**
  - **Tribes don't qualify for tax credits**
  - **Low wind speed**
  - **No PPA yet – low Natural gas prices**
  - **Oklahoma doesn't have an RPS**
  - **Lack of experience in building wind farm**



# Cherokee Wind

## **Environmental – done**

### **Contracted consultant to oversee studies:**

- **Spring Avian**
- **ABB study**

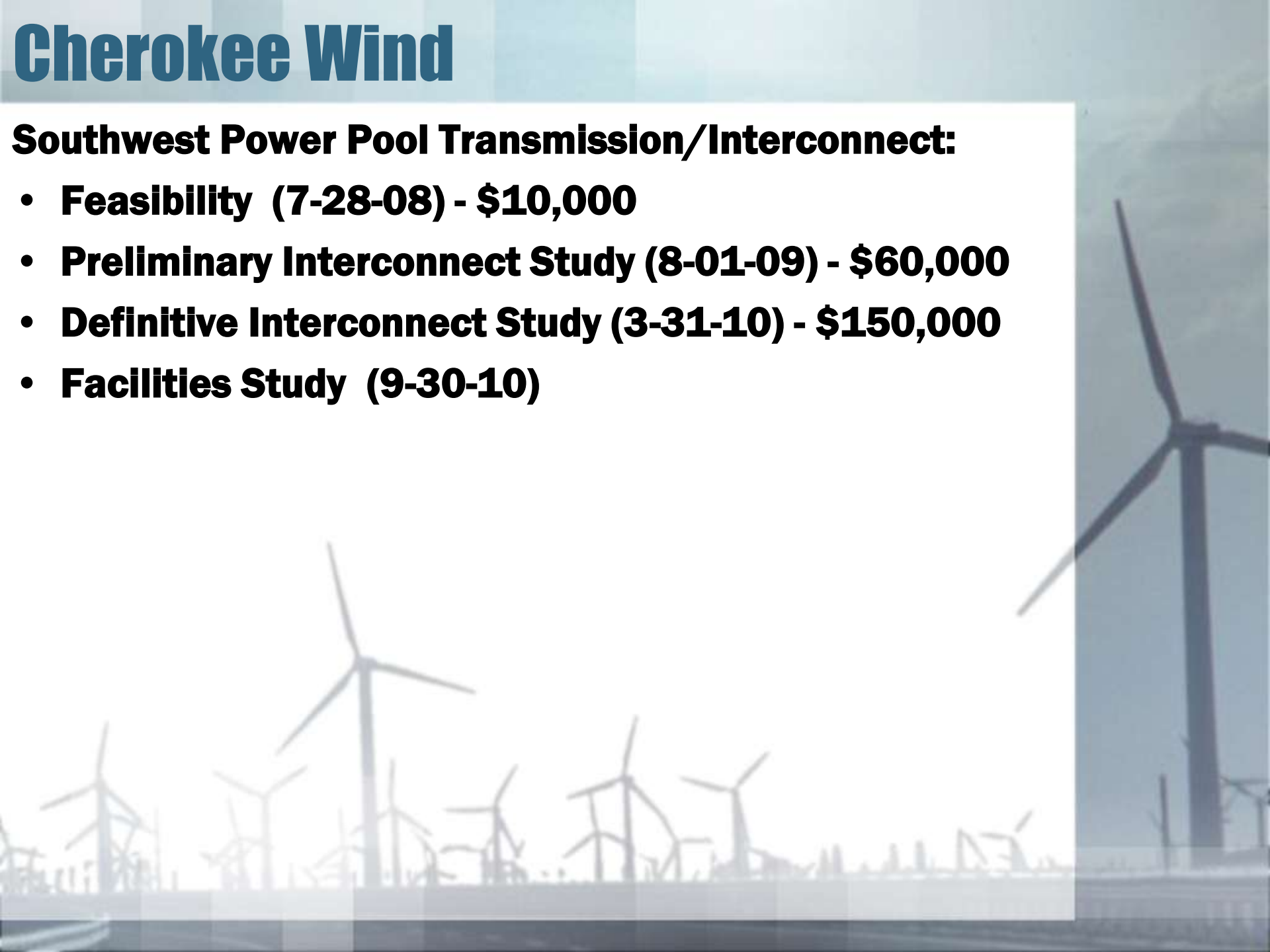
## **Environmental – to do**

- **Env. Assessment**
- **Section 7 –  
endangered species**
- **Fall Avian**
- **Bat study**
- **Archaeological/  
cultural studies**
- **Surveying / topo**

# Cherokee Wind

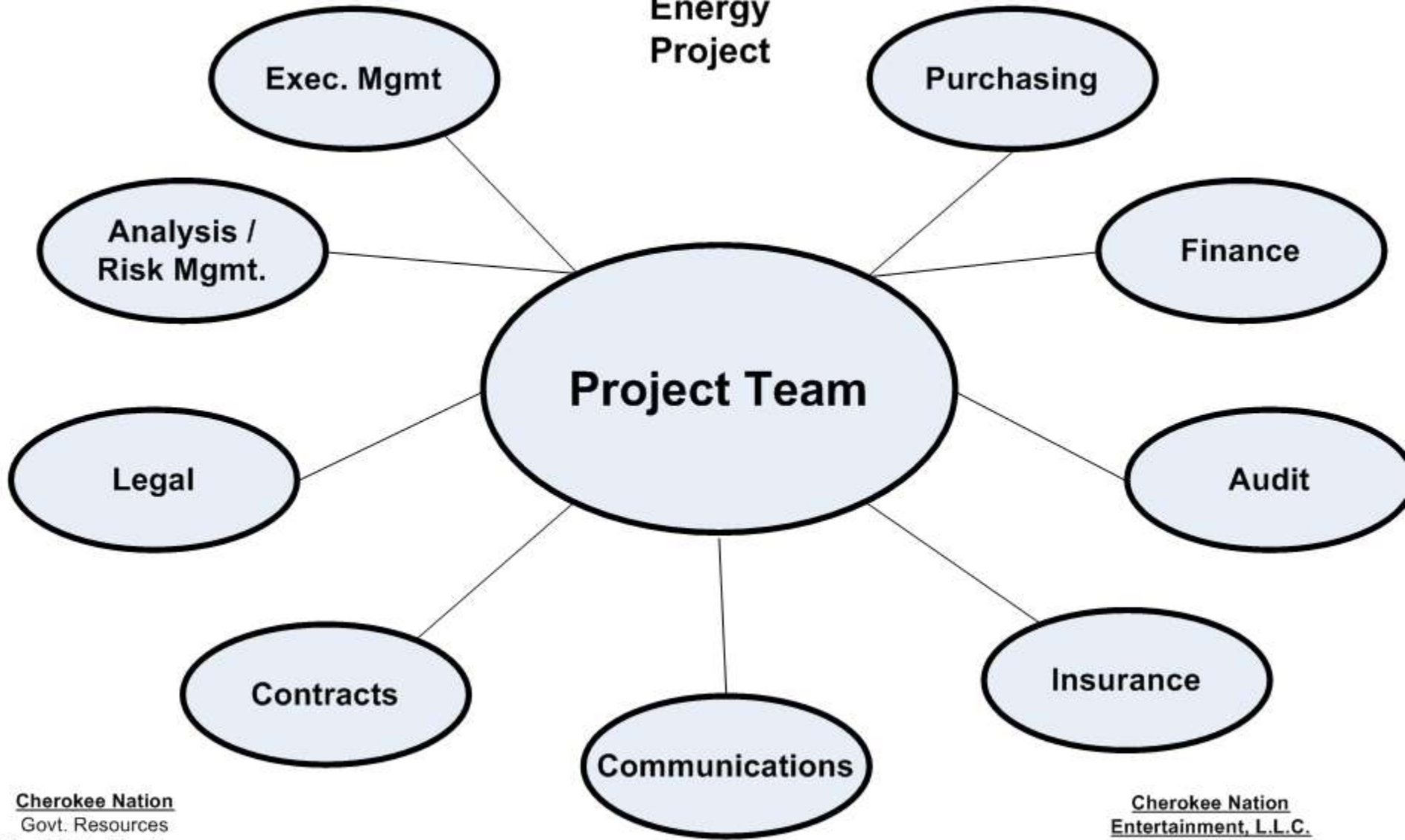
## **Southwest Power Pool Transmission/Interconnect:**

- **Feasibility (7-28-08) - \$10,000**
- **Preliminary Interconnect Study (8-01-09) - \$60,000**
- **Definitive Interconnect Study (3-31-10) - \$150,000**
- **Facilities Study (9-30-10)**





**Cherokee  
Wind  
Energy  
Project**

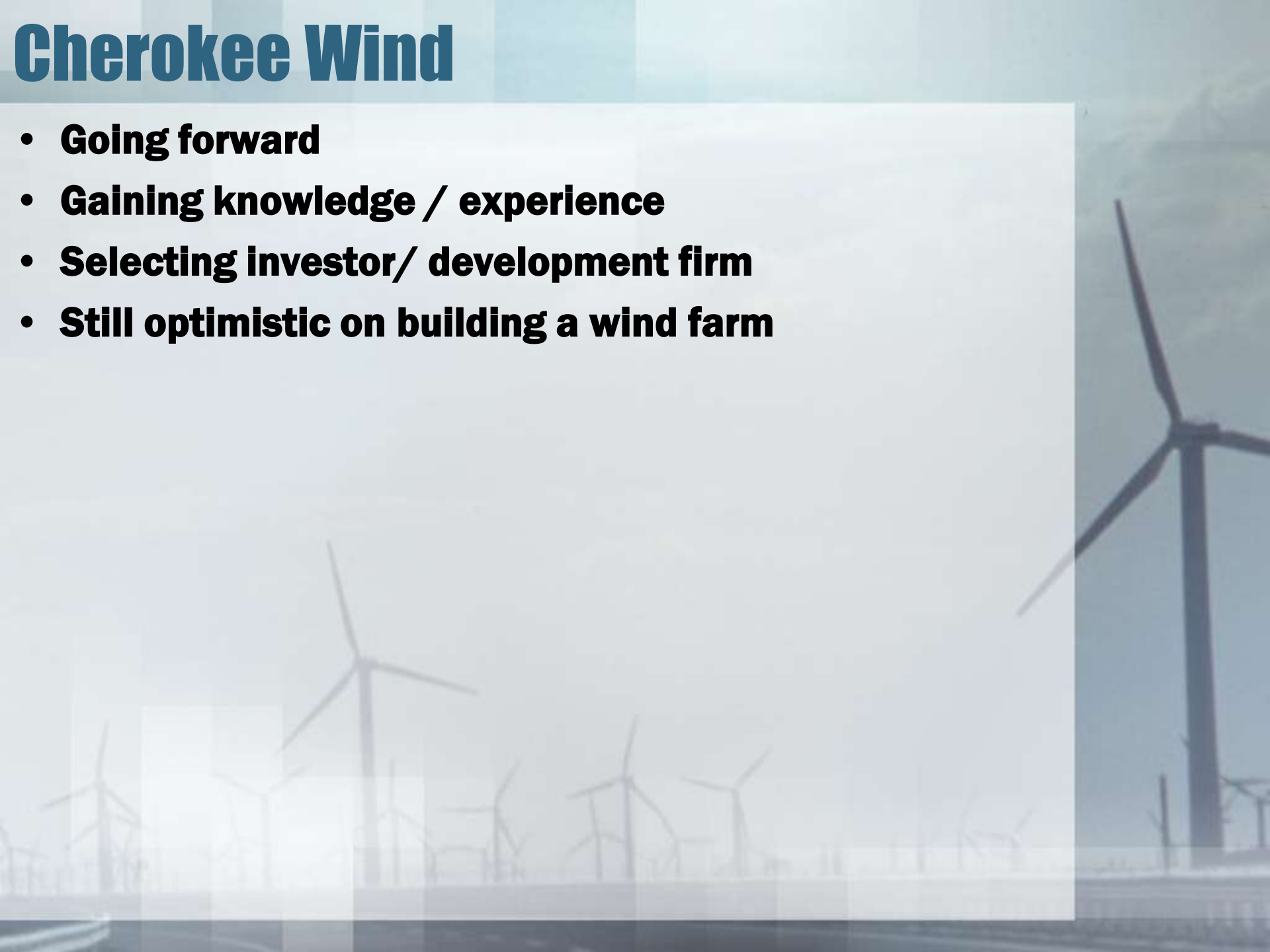


**Cherokee Nation**  
Govt. Resources  
Real Estate Services  
Natural Resources  
EPA  
Roads  
Construction

**Cherokee Nation  
Entertainment, L.L.C.**  
IT  
Safety  
Accounts Payable  
Human Resources  
Education & Training

# Cherokee Wind

- **Going forward**
- **Gaining knowledge / experience**
- **Selecting investor/ development firm**
- **Still optimistic on building a wind farm**



# Other Renewable Energy Project

- **W.D. Mayo Lock and Dam #14**
  - **30.9 MW hydroelectric power**
  - **Future income stream for 100 years**
  - **Estimated 138,000 MW of renewable power annually**
  - **Completed Phase I feasibility study**
  - **Phase II/III pre-construction engineering/cont. feasibility**
  - **Pending passage of amended federal legislation**
  - **Identify marketing opportunities**
  - **Power Purchase Agreements**
  - **Develop financing plan around available investors and incentive programs for hydro power projects.**

# W.D. Mayo Lock & Dam #14

