

TRIBAL ENERGY PROGRAM

Energy Efficiency and Renewable Energy Conference November 16-20, 2009



Chris Howard
Director of Economic Development,
Public Relations and Environmental Services

TRIBAL VISION



“It is the Vision of the Elk Valley Rancheria to have respect and dignity for all, preserve our culture, be self-sufficient and diversified for the good of the Tribe, Community, County and Region.”



RANCHERIA LOCATION



- North western most County in California situated in the heart of Redwood Country.
- Extremely Isolated and rugged.
- Isolation contributes to increased cost of goods and services.

Figure 1-3 Elk Valley Rancheria Overview Map



TRIBAL HISTORY



- Elk Valley Rancheria was established in 1909.
- Made up of Tolowa, Hoopa, Karuk and Yurok.
- The Tribe was terminated under the California Rancheria Act in 1962.
- Restored to recognition in 1984 under *Hardwick et al. vs. United States*.
- Lost much of its holdings during termination.



TRIBAL ENERGY PROGRAM GOALS



- How can the Tribe's Vision help achieve a level of self sufficiency for its members, facilities and businesses while maintaining or increasing quality of life?
- The Tribe is new to the Tribal Energy Program and we are committed to determine the best conservation options available to the Tribe.
- The Tribe is committed to responsible environmental stewardship balanced with the goal of economic self-sufficiency.



ENERGY EFFICIENCY



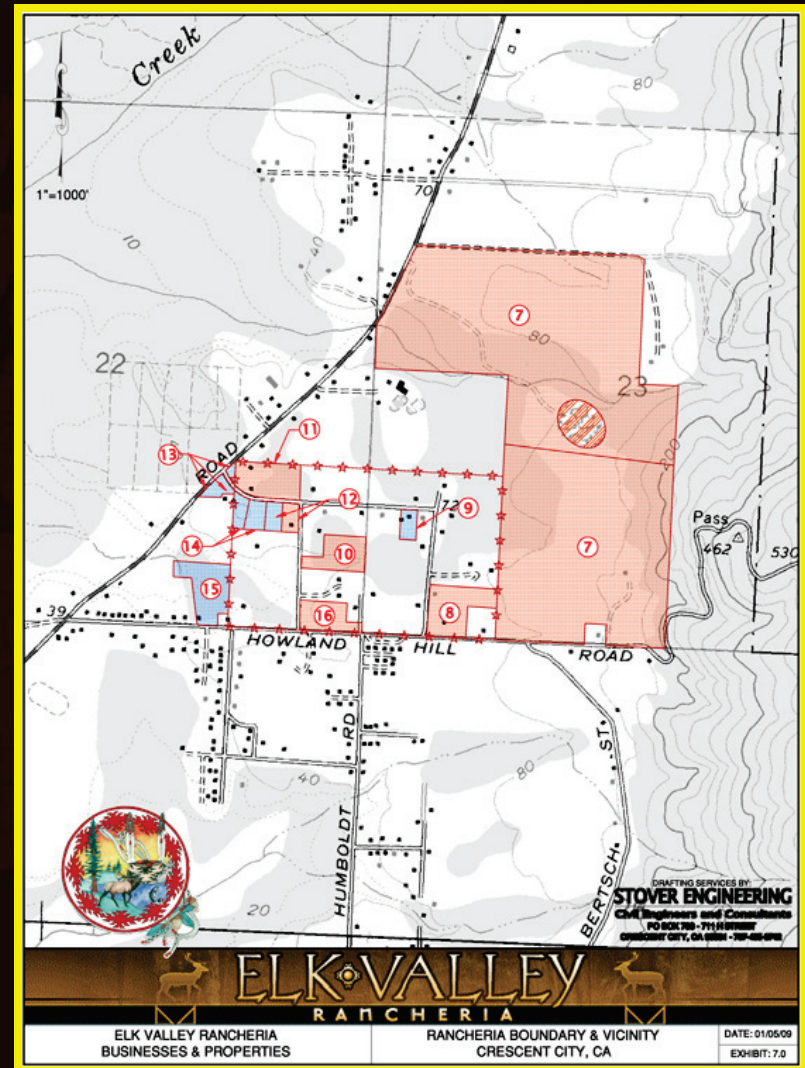
- Energy Efficiency is the Backbone of any Program
 - Conduct Baseline Assessment
 - Conduct Economic Screening Analysis
 - Conduct Energy Conservation Analysis



TRIBAL ENERGY AUDITS



- Energy Efficiency Audits will be occurring on four Rancheria Facilities
 - Tribal Administrative Offices
 - Headstart/Small Community Center
 - Tribal Gaming Commission Offices
 - Elk Valley Casino



TRIBAL ENERGY USEAGE



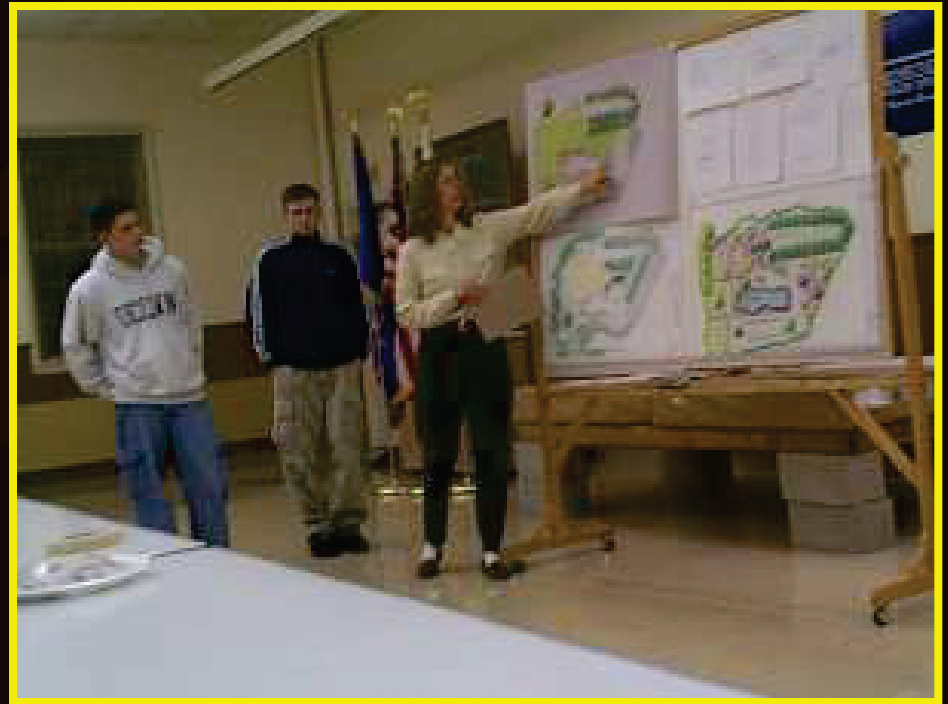
Facility	Annual Usage (gal)	Monthly Average (gal)
Administrative Offices	5,822	485
Small Community Center	185	15
Tribal Gaming Commission	0	0
Casino	11,870	989
Total	17,877	1,489

Facility	Annual Usage (kwh)	Monthly Average (kwh)
Administrative Offices	116,400	13,867
Small Community Center	76,299	6,358
Tribal Gaming Commission	14,901	1,242
Casino	2,430,300	202,525
Total	2,687,900	223,991

ALTERNATIVE ENERGY ASSESSMENT



- Renewable Energy Assessment
 - Research Alternative Energy Options
 - Conduct Preliminary Engineering for Energy Efficient Systems and Feasibility Work



Renewable Alternatives Assessment



Review Alternatives with Tribal Council

- Solar
 - Wind
 - Small Hydro
 - Geo Thermal
 - Wave Energy
 - Bio Mass
- Determine advantages and disadvantages of renewable energy sources, including their potential environmental, cultural and social impacts.



Renewable Alternatives Assessment



Selective Alternative and Assess Feasibility

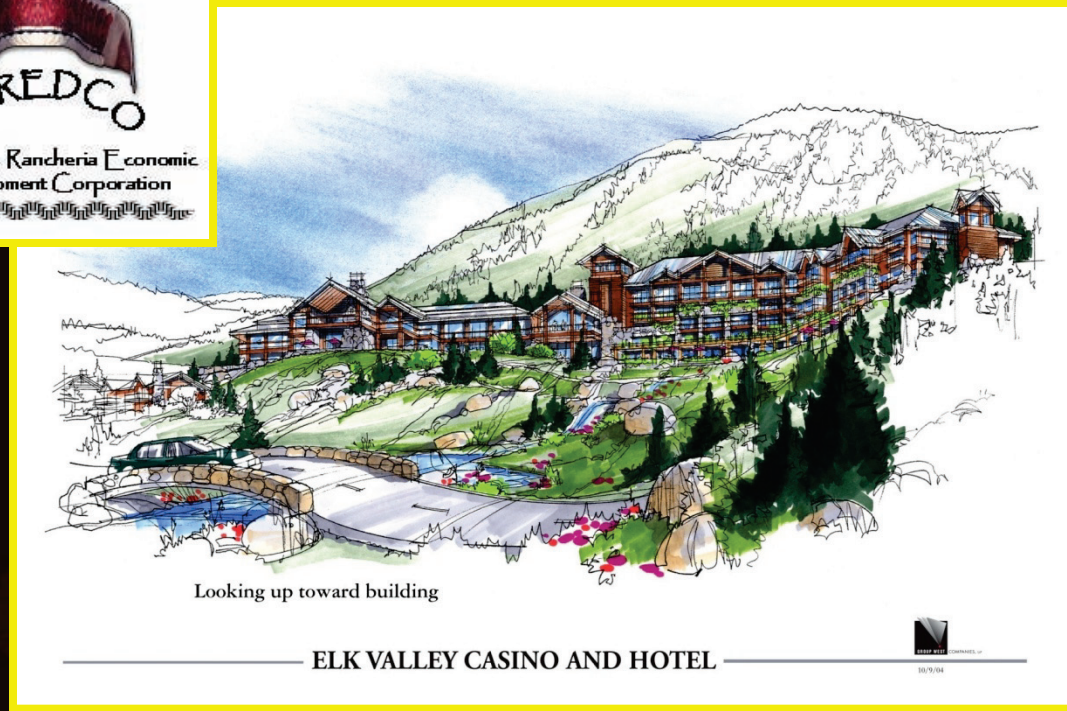
- Annual Casino Energy Consumption: 2,430,300 kWh
- Cost Per kWh: **Average 0.08 cents**
- EVR currently has very low energy cost compared to the rest of California; the majority of power produced in the pacific northwest comes from hydroelectric.
- Best case scenario if technology, regulatory framework, O&M, utility grid and if the community would support development of EVR Wave Energy Project, cost to EVR would equal **0.52 cents/kWh.**



GOALS AND TRANSFERABILITY



- Goals upon Project Completion
 - Development of an Action Plan
 - Adopt Action Plan through Council Resolution
- Develop what we have learned and apply to existing businesses



THE FUTURE IS IMPORTANT



Elk Valley
casino resort



Recently completed first step in analysis of incremental energy savings and cost associated with implementation of Energy Efficiency Measures.



© 2009