

PRESENTATION ON THE TO'HAJIILEE CHAPTER'S NEW SOLAR FARM TO BE BUILT ON CAÑONCITO BAND OF NAVAJO TRUST LAND



**Rob Burpo, President
First American Financial Advisors, Inc.
Albuquerque, New Mexico**

About To'Hajiilee

- **Located 60 miles from the Navajo Reservation**
- **One of 64 Navajo Nation Chapters**
- **One delegate out of 88 to the Navajo Tribal Council**
- **Surrounded by two counties and a Pueblo**
- **Have their own 36,000+ acres of trust land**
- **Trust land in their name – not Navajo Nation**
- **Population located about 35 miles from Albuquerque**
- **Site 21 miles from the heart of Albuquerque**
- **70+ % unemployment of adult population**

Mission statement

Establish the new To'Hajiilee solar farm as a modern institutional sized solar farm capable of producing up to 55 mgw of electricity.

Give To'Hajiilee the opportunity to position itself as a viable and sustainable business operation in U.S energy industries.

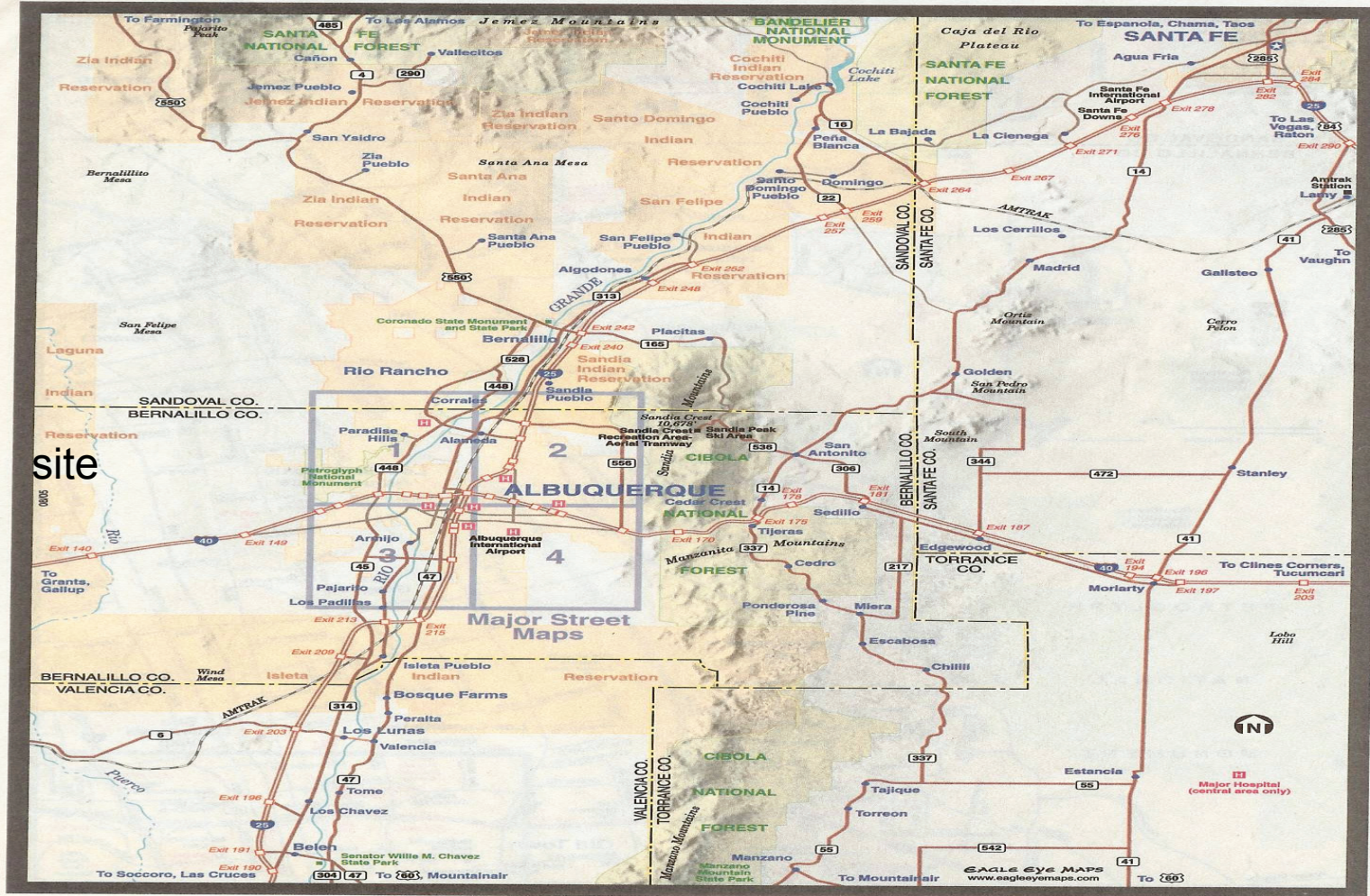
Create an employment base and economic resources to improve the standard of living on CBN lands.

Why This Site Was Picked

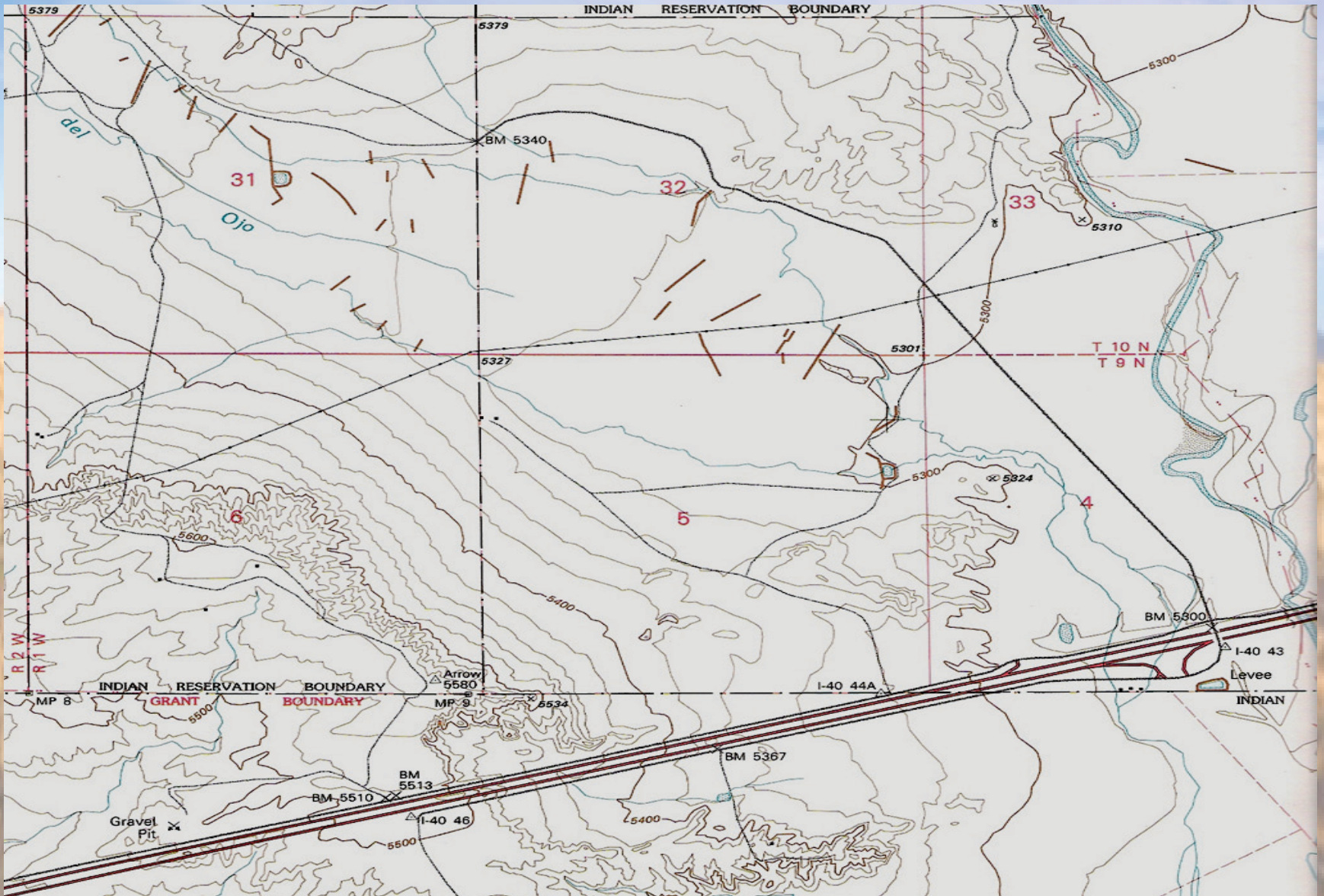
- ▣ **Bernalillo County will work with Chapter to get the road paved to trust land**
- ▣ **There is a current 115 KV transmission line going through the Trust land site that has existing capacity.**
- ▣ **Site reasonably flat, making land prep expenses minimal**
- ▣ **All of these items make east site realistic!**

Distance from Albuquerque

Albuquerque Vicinity Map



Site Map



Chapter Foresight

- **Separated Chapter/government activity from economic development efforts**
- **2002 created a non-profit Econ. Development Corp.**
- **2005 created a for-profit Econ. Development Corp. with the Navajo Nation as owner**
- **2009 took 100% ownership from the Navajo Nation = To'Hajiilee Economic Development, Inc. (TEDI)**

How TEDI Got This Far

Persistence:

Kissed a lot of toads

Worked with electric local utility

Worked with Lizana

Chapter's Economic Development

Company never quit

Met with Chapter members a lot

**Kept in touch with Congressional
delegation**

Recent Transmission Findings

- **Transmission line at site has commercial capacity**
- **Local line owner/electric utility open to negotiations**
- **No upgrade of line required**
- **Makes project more cost efficient**

To Do Items:

- ▣ Site survey and Environmental Assessment
- ▣ Draft Lease / finish and submit Lease to BIA
- ▣ Get name for your company
- ▣ Document new company to reflect ownership by To'Hajiilee and any non-tribal partners
- ▣ Submit corporate docs to Navajo Nation Corp. Div.
- ▣ Begin debt financing work
- ▣ Begin initial design and construction/costing
- ▣ Job fair for construction workers in late fall 2010

To'Hajiilee Team

- Chapter Officials and Membership
- TEDI Board
- Legal Team: Local and Doug McCourt
- DOE – Lizana Pierce
- RCI – feasibility contractor
- NREL
- WAPA
- Western States Energy Solutions
- BIA – lease work
- Local Utilities – PNM and Continental Coop.
- Bernalillo County – road issues

We hope you are as excited about
YOUR
new solar farm as your TEDI Board
members,
your partners and our firm are!

