

Hydro Power Feasibility Study

Hoopa Valley Tribe

Curtis Miller

cmiller@hoopa-nsn.gov

(530)-625-5515





Figure 1. Location of the Hoopa Valley Indian Reservation

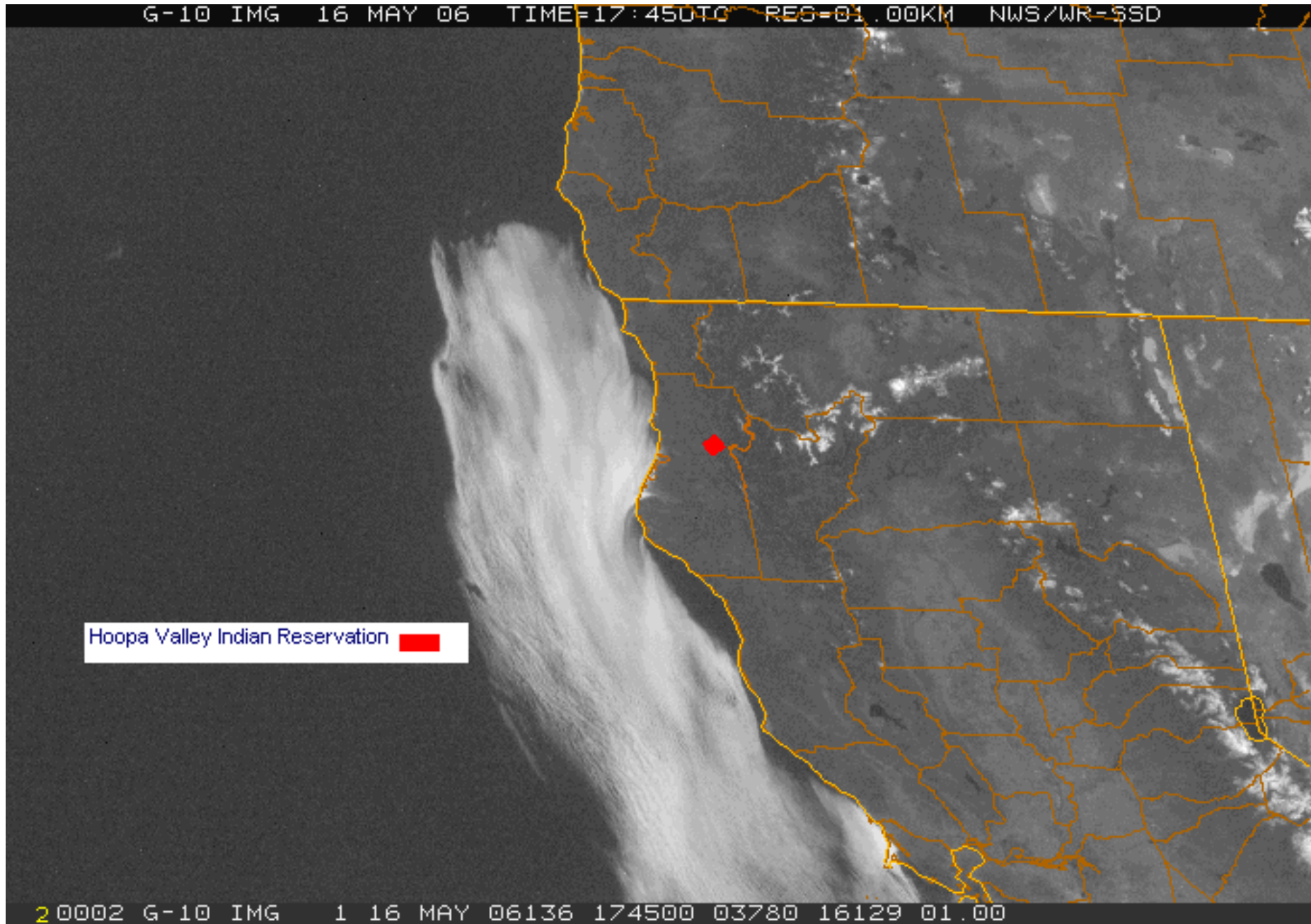
Hoopa Valley
Indian Reservation

California




San Francisco





Hoopa Valley Indian Reservation 

A wide-angle landscape photograph showing a river valley. In the foreground, there is a dry, sandy area with sparse vegetation. A river flows through the middle ground, surrounded by dense green and yellowish trees. In the background, there are several layers of blue-toned mountains under a clear sky. The text is overlaid on the lower-left portion of the image.

There are over 1200 miles of major streams within the Hoopa Valley Reservation many of which support Salmon, Steelhead and Rainbow trout. 50-60 inches of rainfall /year

In the beginning

In FY 2005 the Hoopa Tribal EPA received a grant from DOE to conduct a 2 year feasibility study for small scale hydropower on 7 major tributaries of the Reservation that flow into the Trinity River

Concept of Approach

- Road access to streams
 - Intake sites, pipeline construction and turbine sites
- Distance to Valley
 - produce enough power to get down to the valley and still have plenty for the community to use
- Proximity to power lines – connectivity
- Location for turbine
 - relatively flat, close to power lines
- Adequate head and majority of stream flows at intake site

Salmon are the life blood of the Hupa and Yurok and Karuk people



Issue(s)

In 2003 the Tribe won
it's case for 30% more
water from the
Lewiston dam to
support Salmon
fisheries in the Trinity
and Klamath Rivers
Negotiations annually
for water



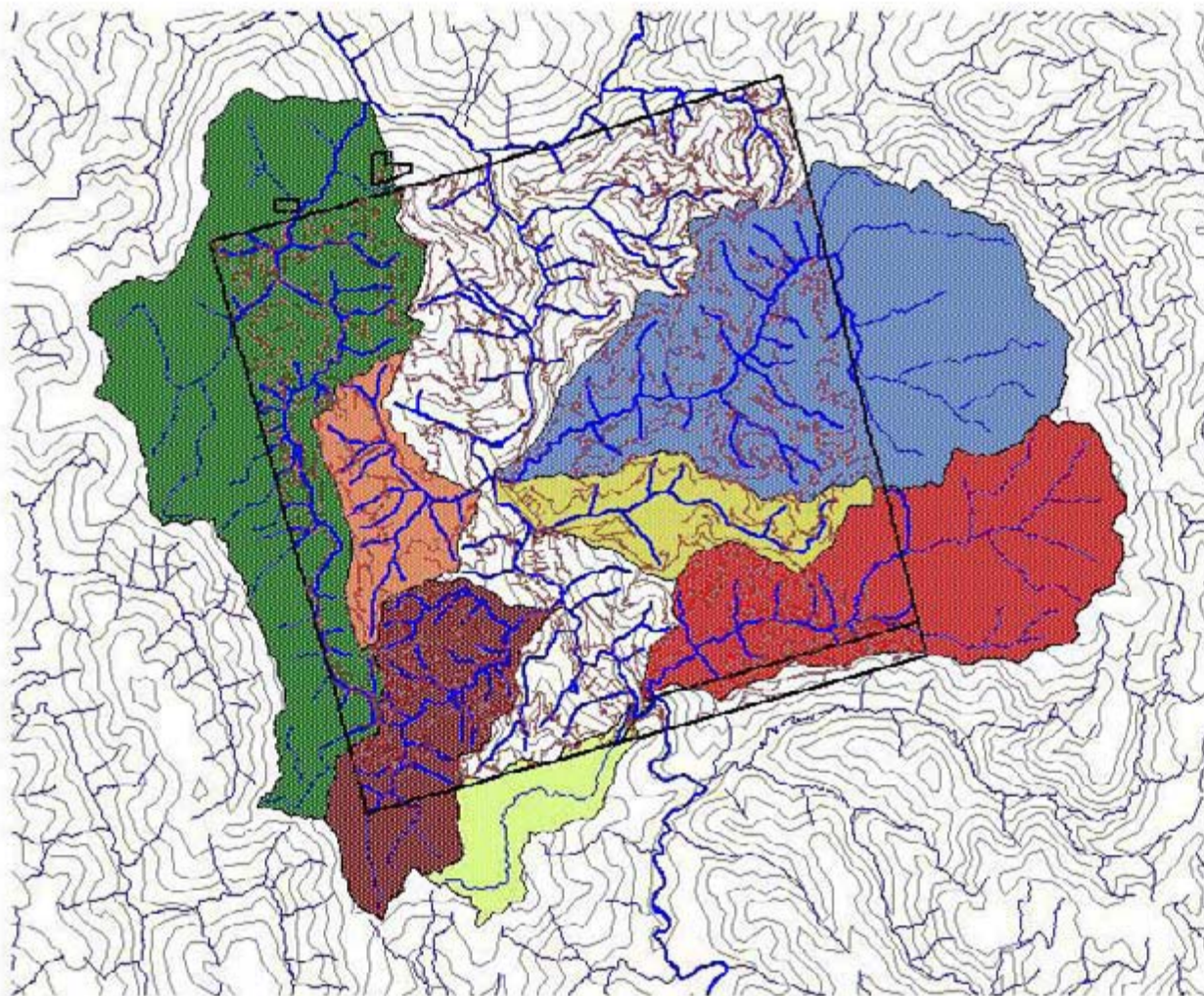
Lewiston Dam – Trinity River



Potential watersheds

- Pine Creek _____ 31,413 acres
- Mill Creek _____ 30,810 acres
- Tish Tang Creek _____ 19,131 acres
- Supply Creek _____ 10,254 acres
- Hostler Creek _____ 6,657 acres
- Soctish Creek _____ 5,924 acres
- Campbell Creek _____ 4,355 acres

Hoopa Valley Hydrosheds



- ⚡ Roads
- ▬ Trinity River
- ▭ Reservation boundary
- ⚡ Major streams
- ⚡ Reservation Streams
- ▭ Campbell_shed.shp
- ▭ Tish Tang Watershed
- ▭ Tish Tang Hydro Area
- ▭ Hostler Watershed
- ▭ Supply Creek Watershed
- ▭ Pine Creek Watershed
- ▭ Socktish Watershed
- ▭ Mill Creek Watershed
- ⚡ Contour at 500ft



Upper Campbell Creek Landslide Off Reservation Impacts



Campbell Creek Sediments



Hostler Creek

- Gross head, 39 feet
- Length of pipe, 375 feet
- Design flow, 10 cfs
- Flow duration 217 days
- Recommended pipe diameter, 16"
- Calculated net head, 35 feet
- Expected power, 19KW
- Revenue ~\$6,000 annually



Mill Creek

- Gross head, 72 feet
- Length of pipe, 6350 feet
- Flow range, 100 cfs
- Flow duration 182 days
- Recommended pipe diameter, 60"
- Calculated net head, 65 feet
- Expected power, 470KW
- Annual Revenue ~ \$150,000





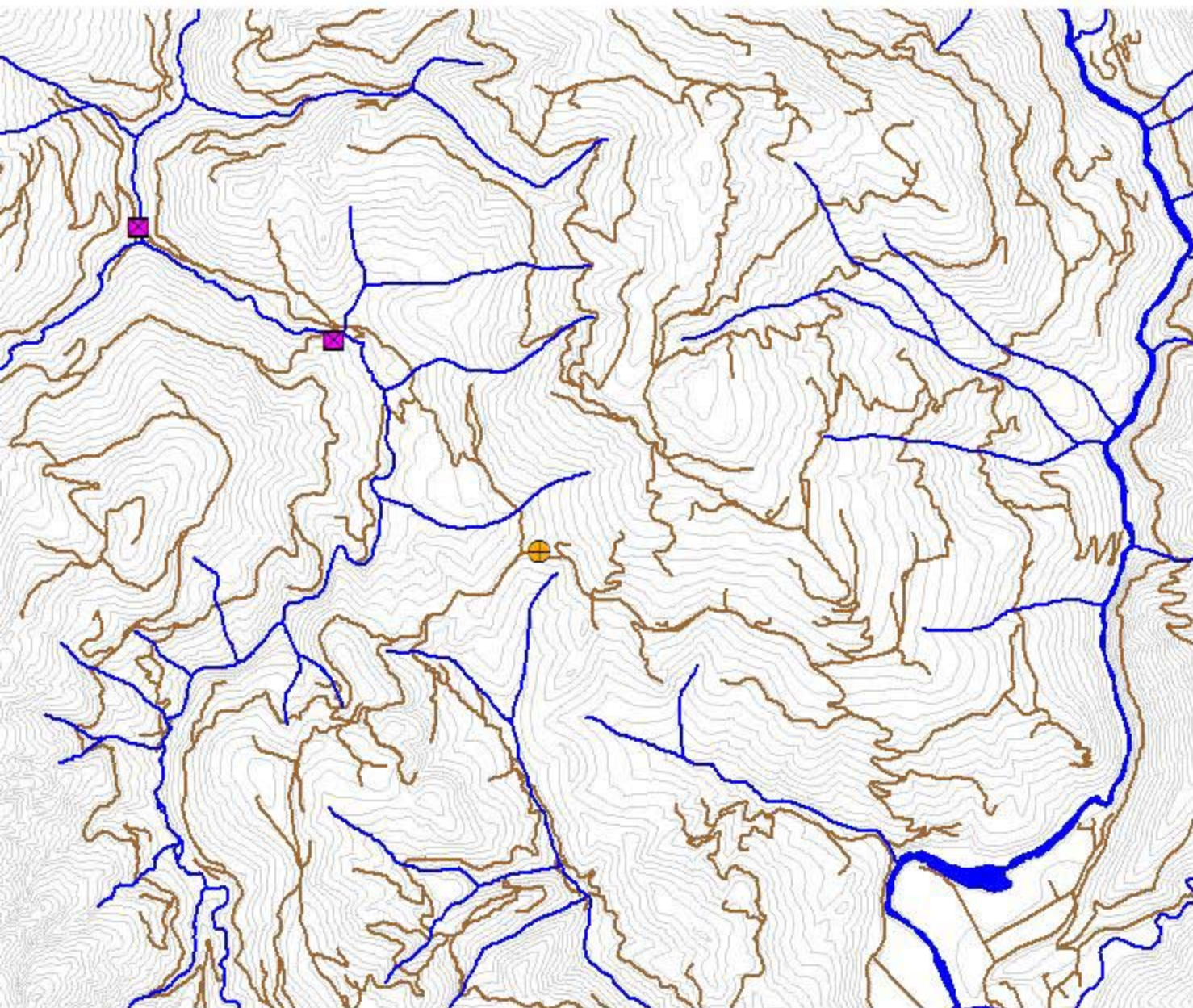


Pine Creek

- Gross head, 66 feet
- Length of pipe, 4500 feet
- Flow range, 50 cfs
- Duration 50cfs for 141 days
- Recommended pipe diameter, 48"
- Calculated net head, 62 feet
- Expected power, 220KW
- Annual Revenue ~ \$58,000



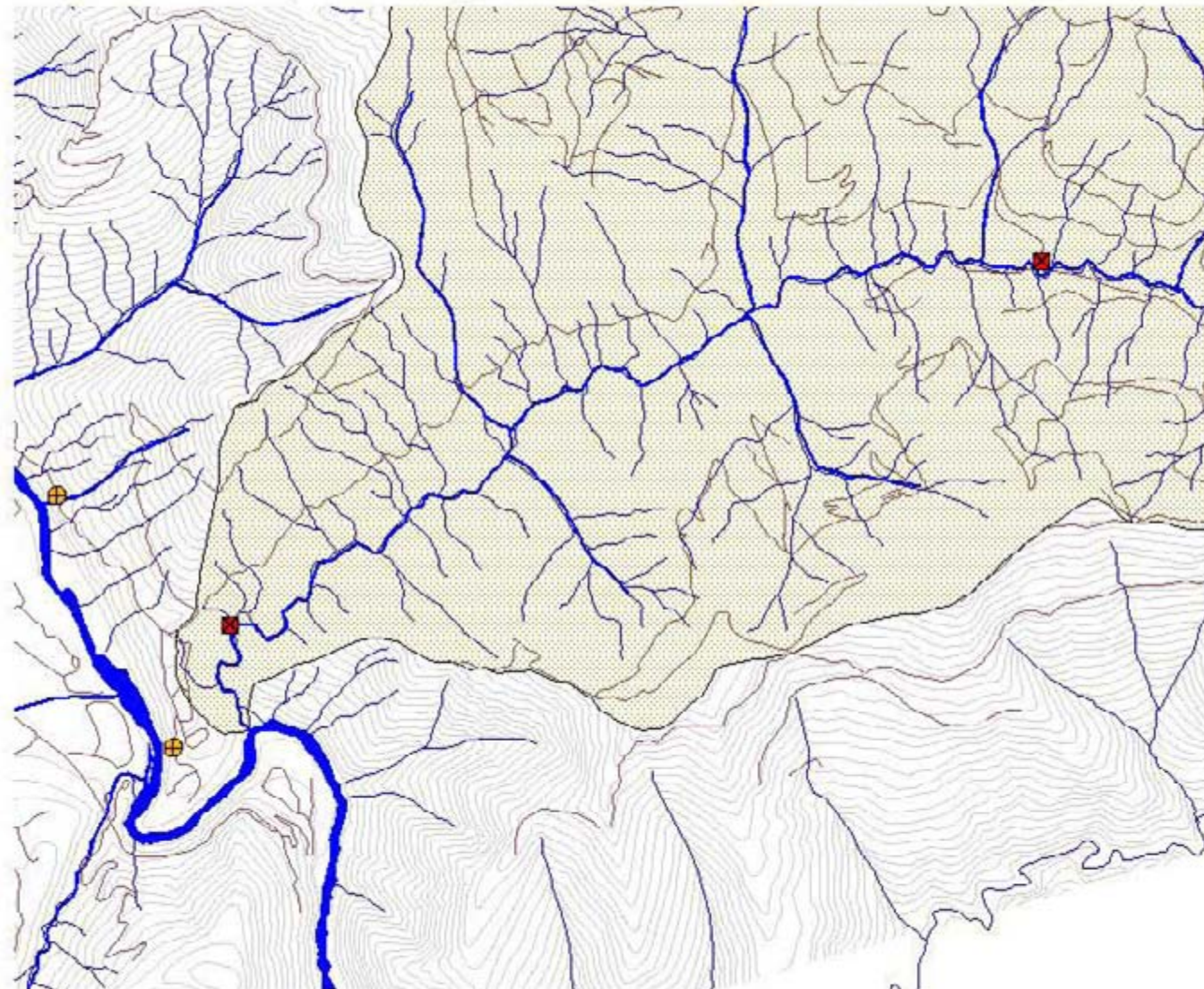
Pine Creek Hydropower



- Pine creek hydro si
- PG&E_connect
- △ Streams
- ▬ River
- ▬ Roads
- ▬ Contour



Lower Tish Tang Creek Hoopa Valley



- ⊕ Pge_connect.shp
- Tish Tang Hydro sites
- △ Creeks.shp
- ▬ Trinity River
- ▬ Roads
- ▬ Reservation Streams
- ▭ Tish Tang Watershed
- ▬ Contour at 80 ft.



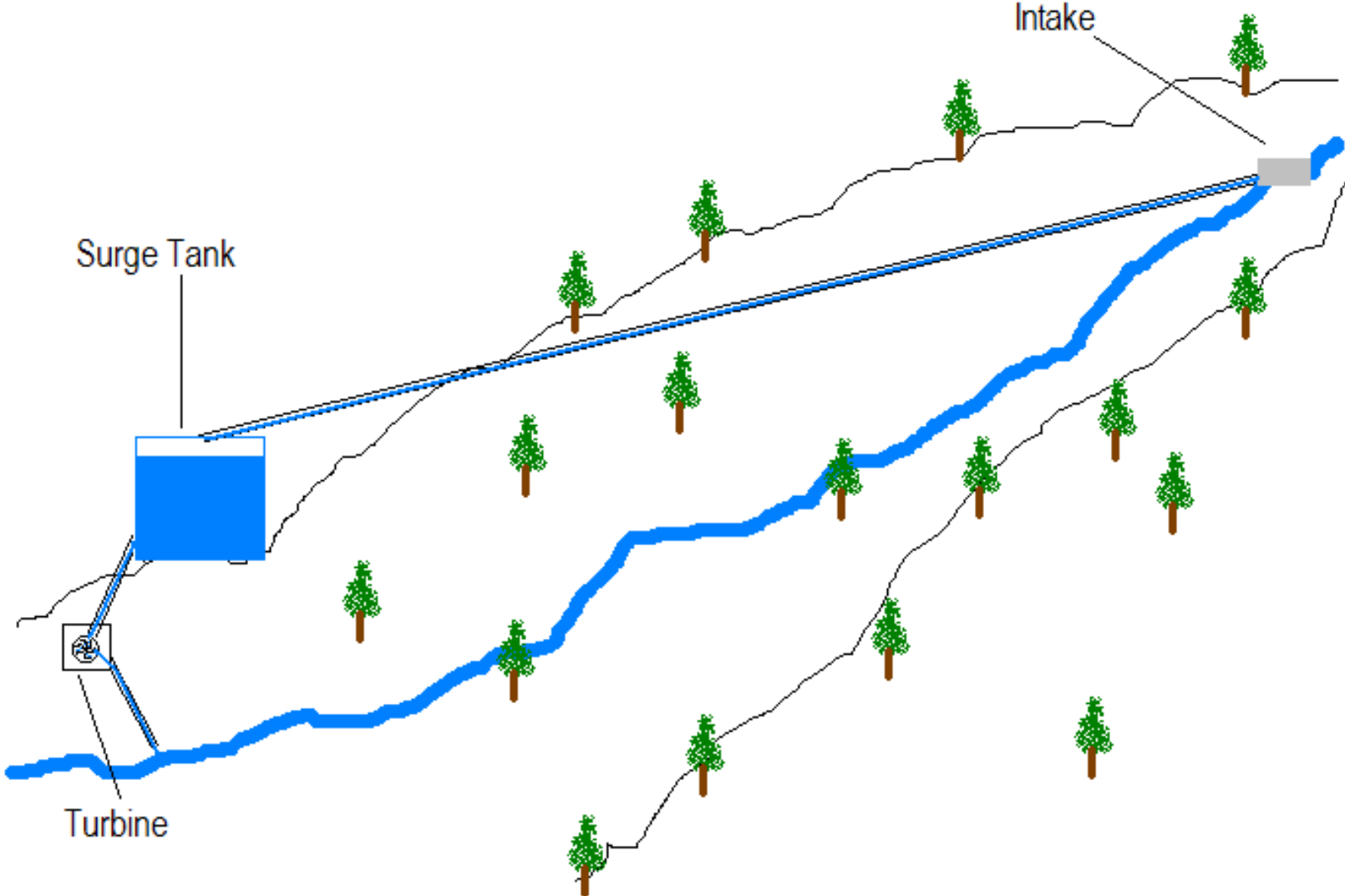
Instability







Alternative Concept



**Bottom Line
Hoopa Tribe Hydro Projects**

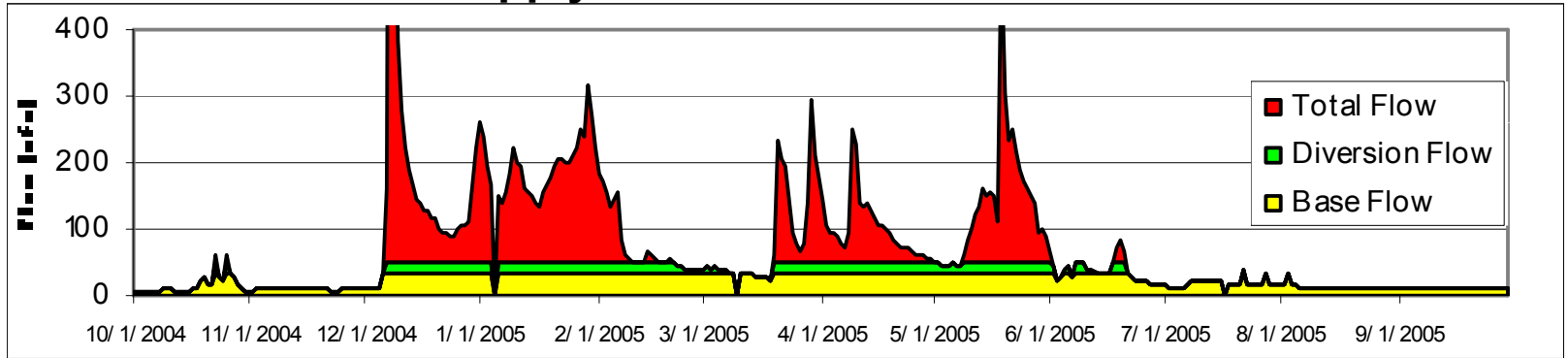
	KW Size of Turbine	Power Purchase / KWH	Annual Revenue	Total Cost of Installation	25% Down payment or Cost share	Loan Amt (Total Cost less down payment)	6% Note, amortized over 10 yr., annual payments	Revenue - Cost
Socotish Creek	1300	0.092	310,003	1,739,960	\$434,990	1,304,970	173,854	136,149
Supply Creek Option	1100	0.092	262,310	1,541,825	\$385,486	1,156,369	154,057	108,253



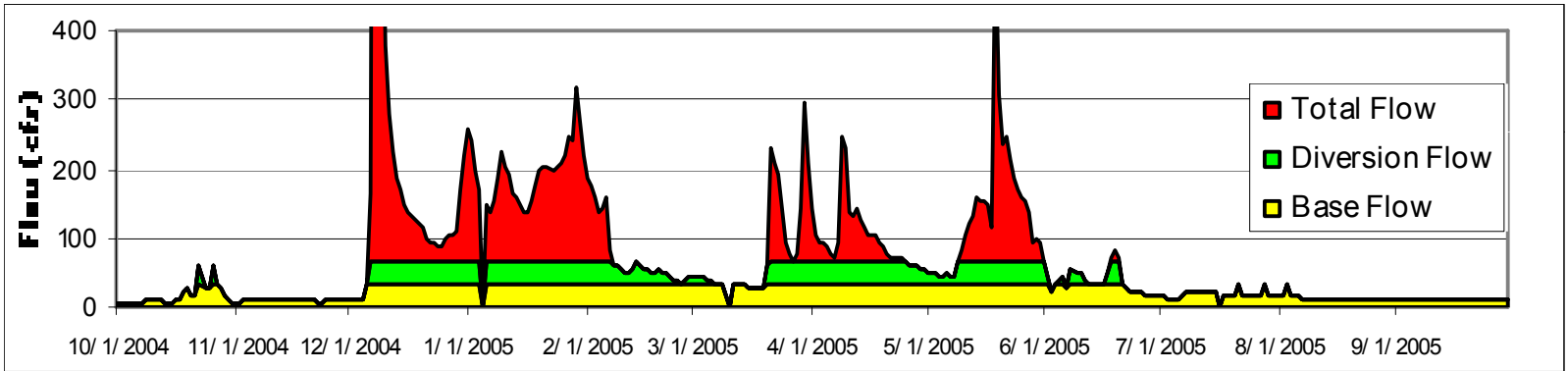
Collecting stream flow data

Supply Creek

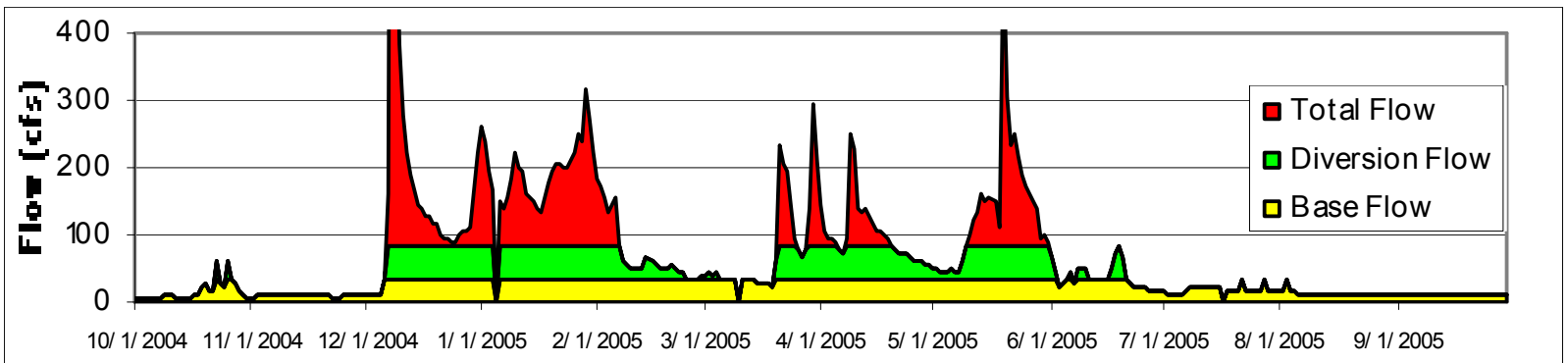
18"



24"

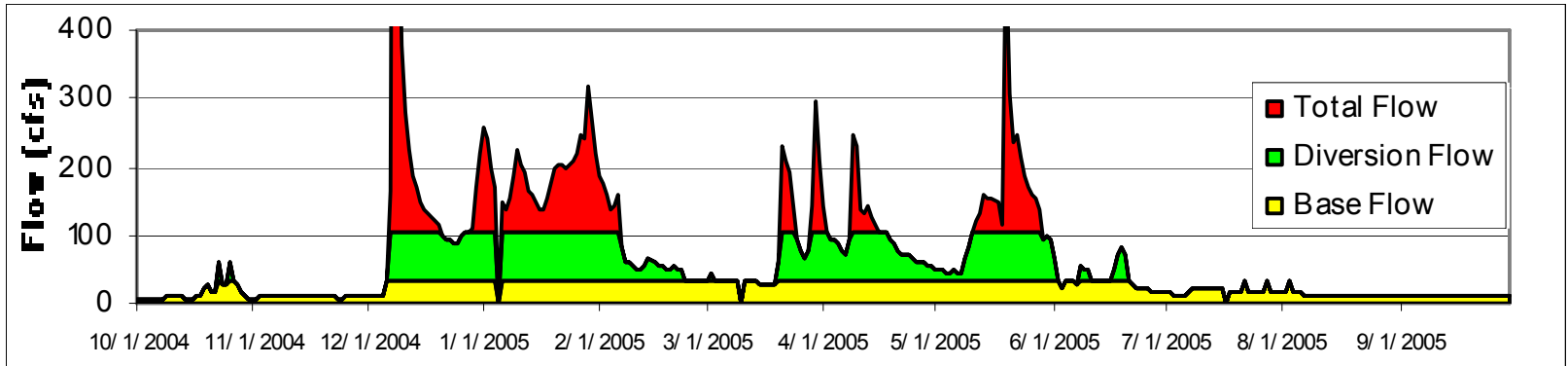


30"

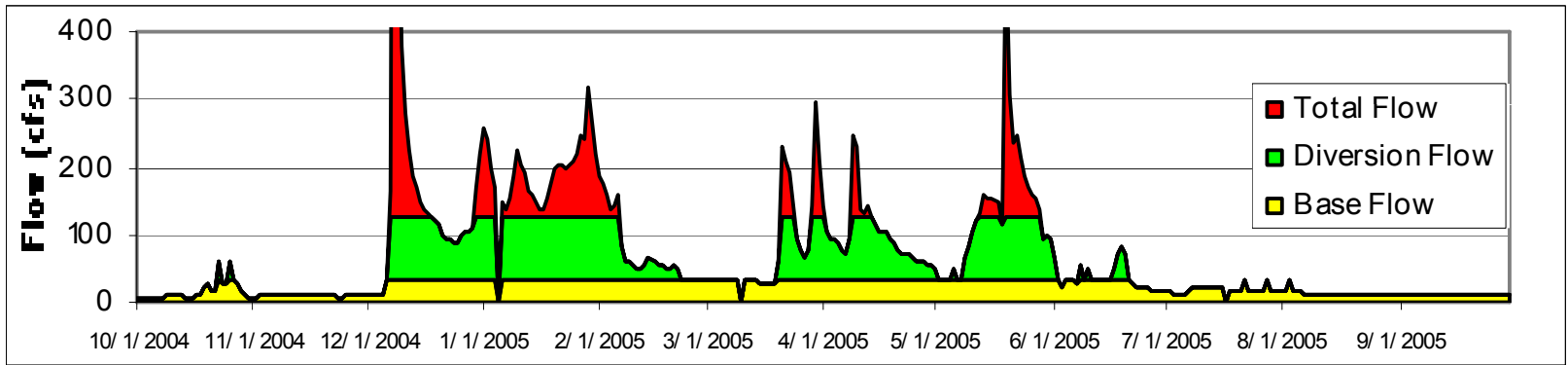


Supply Creek

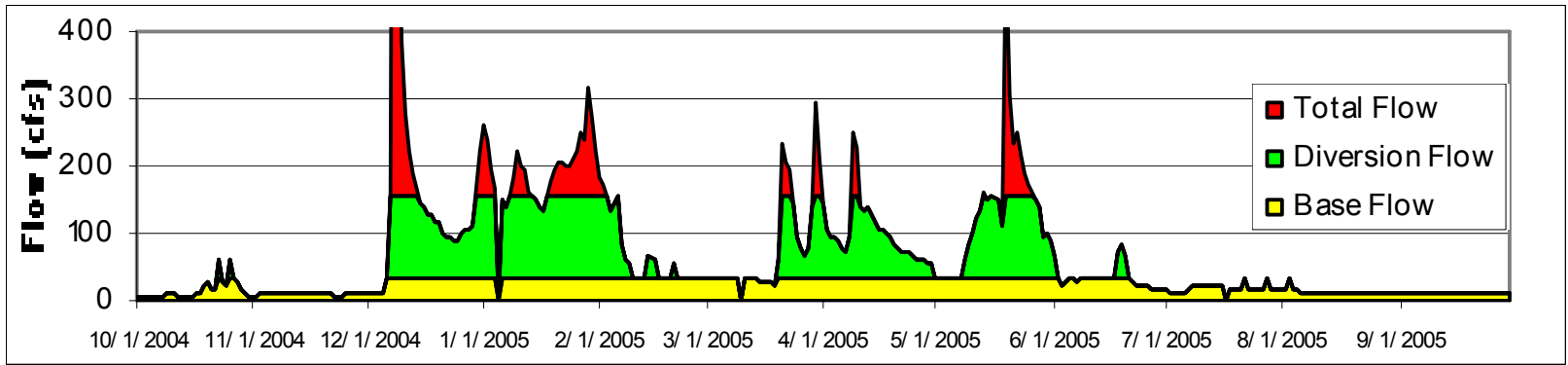
36"



42"

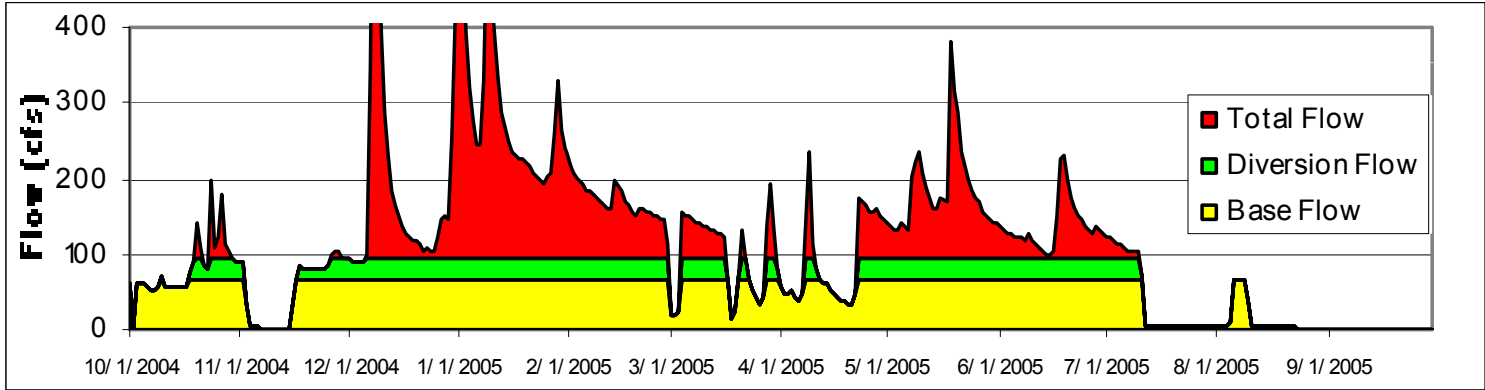


48"

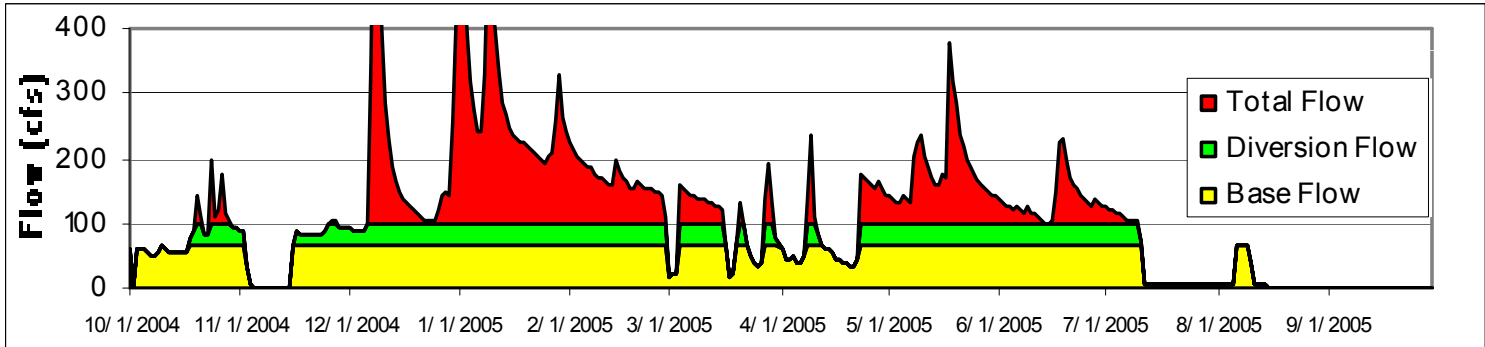


Soctish Creek

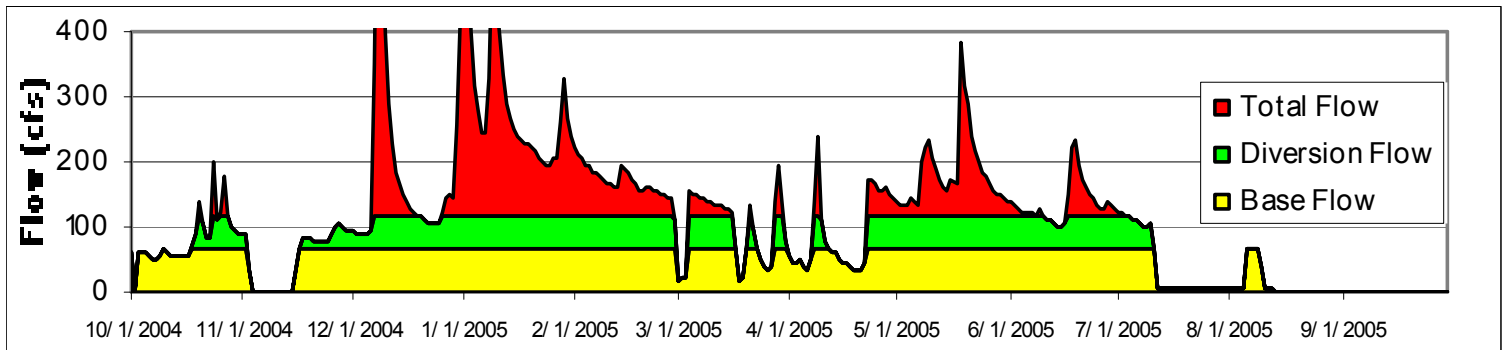
18''



24''

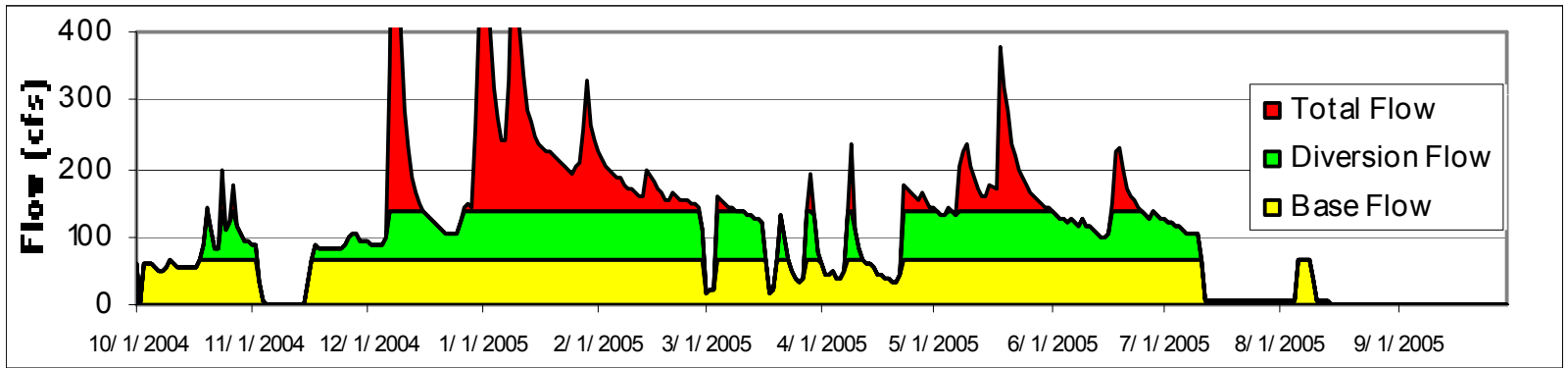


30''

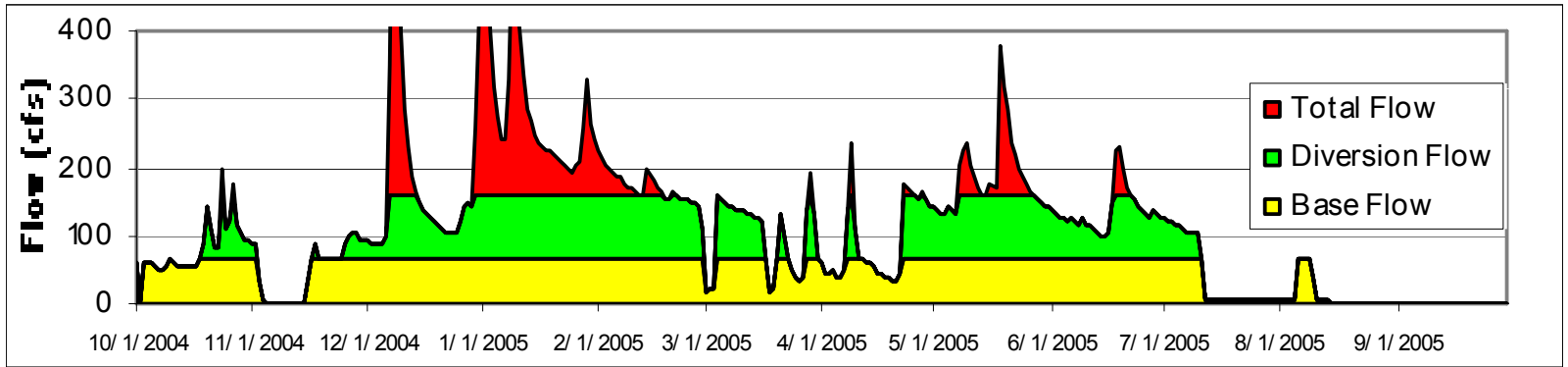


Soctish Creek

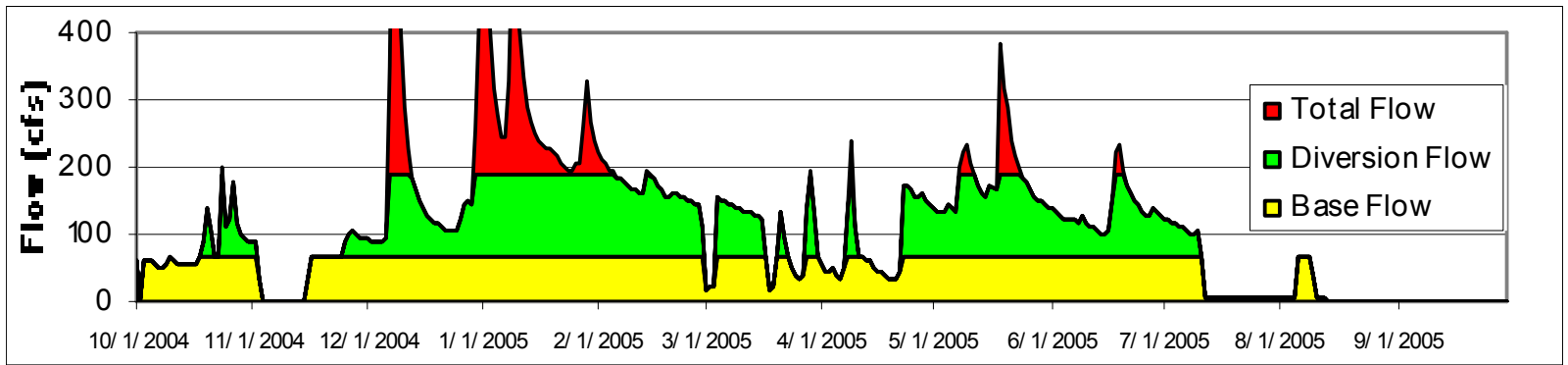
36"



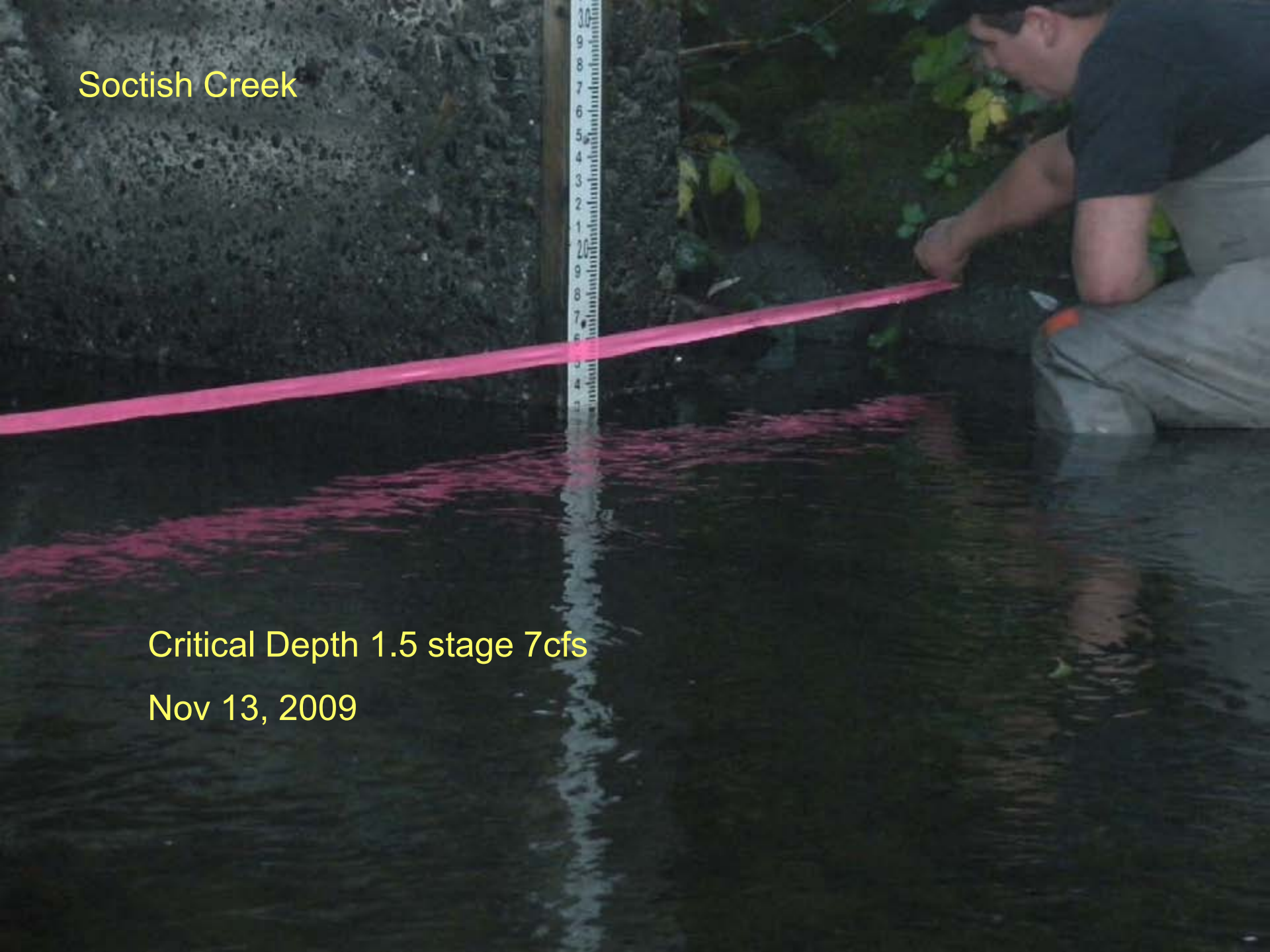
42"



48"

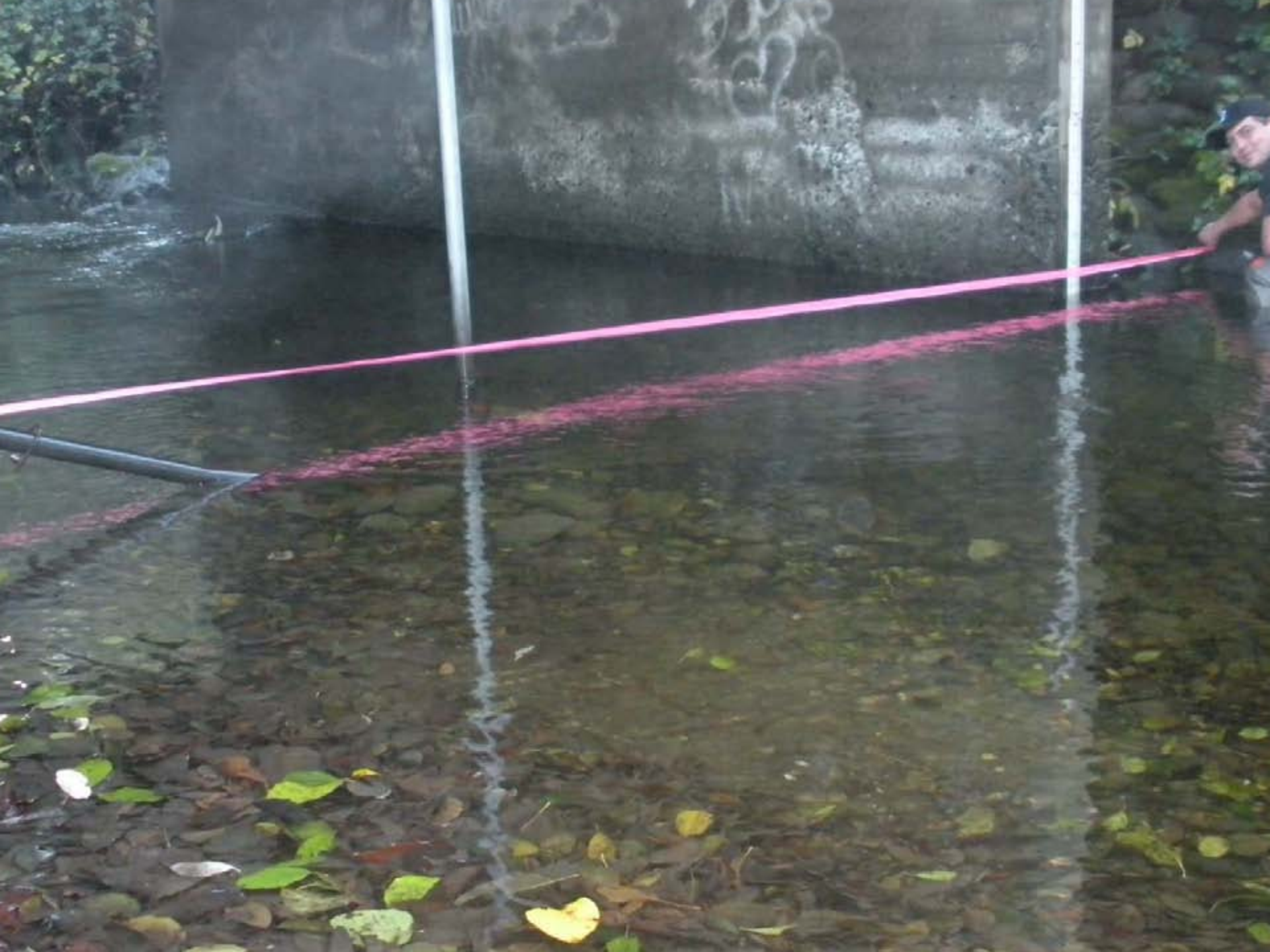


Soctish Creek

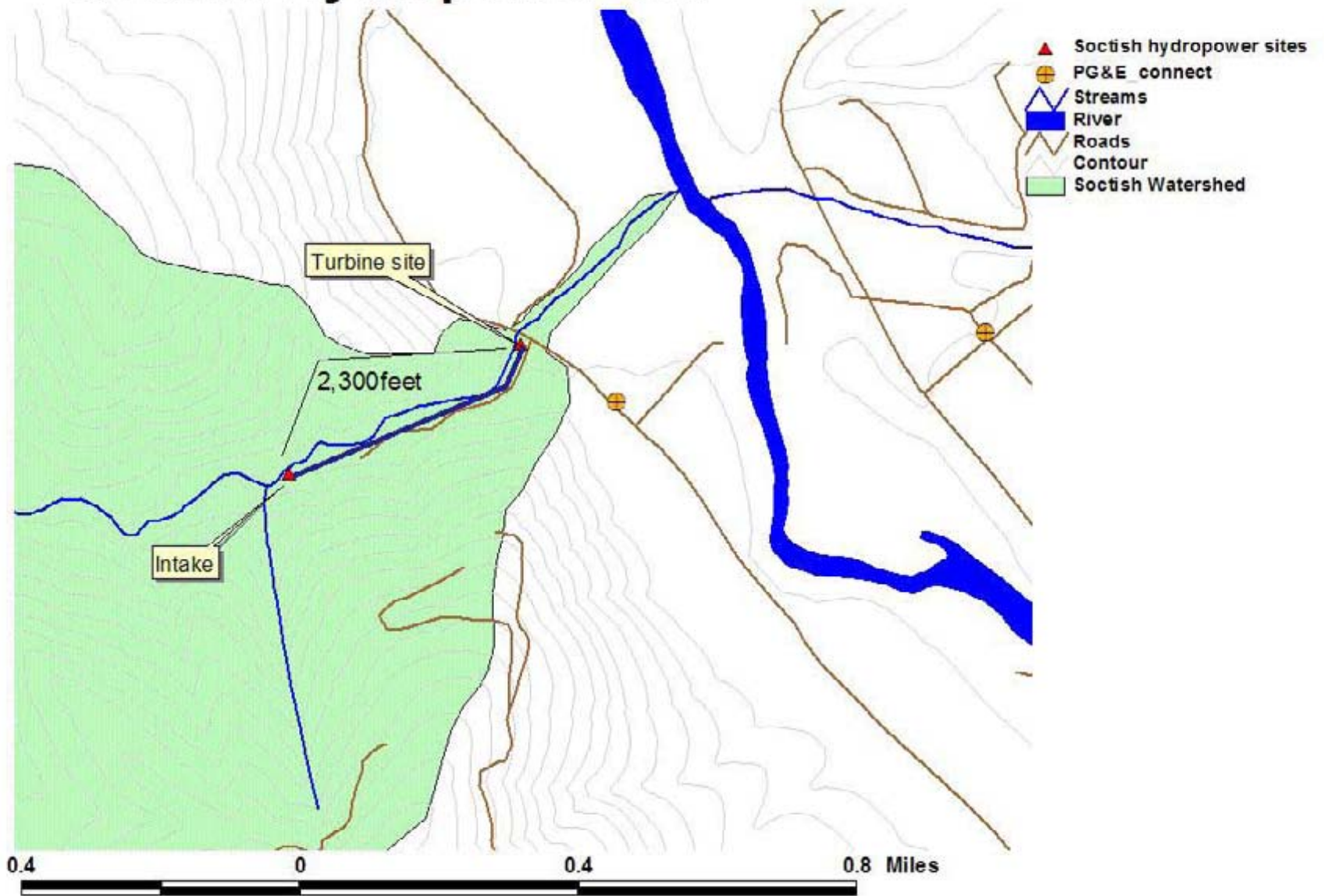


Critical Depth 1.5 stage 7cfs

Nov 13, 2009











Soctish Hydropower site



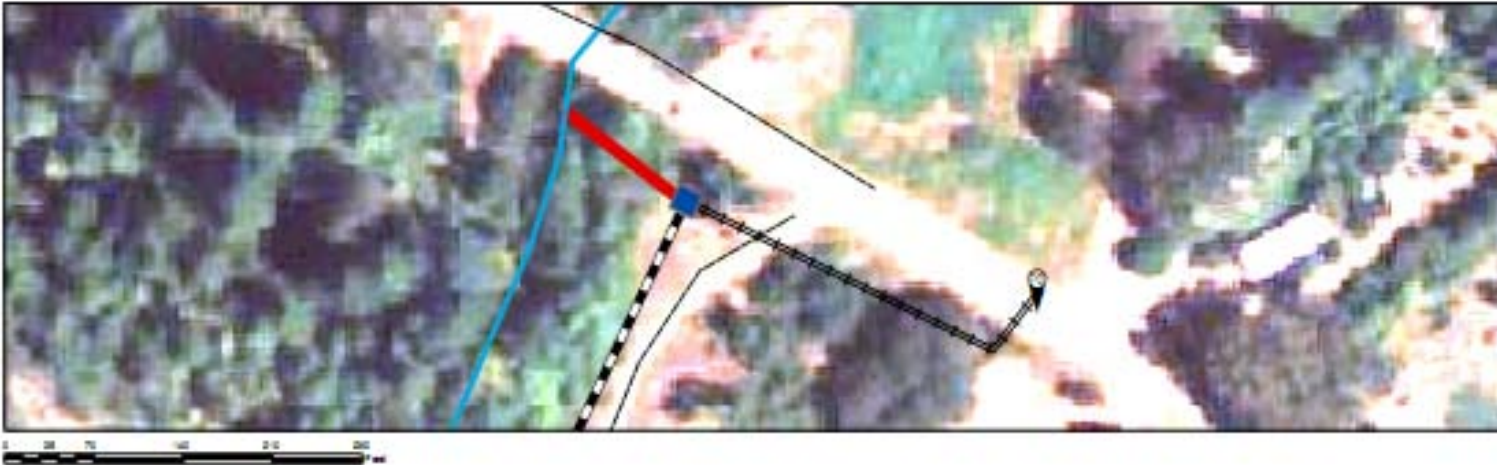


Concept Schematic for Socktish Creek

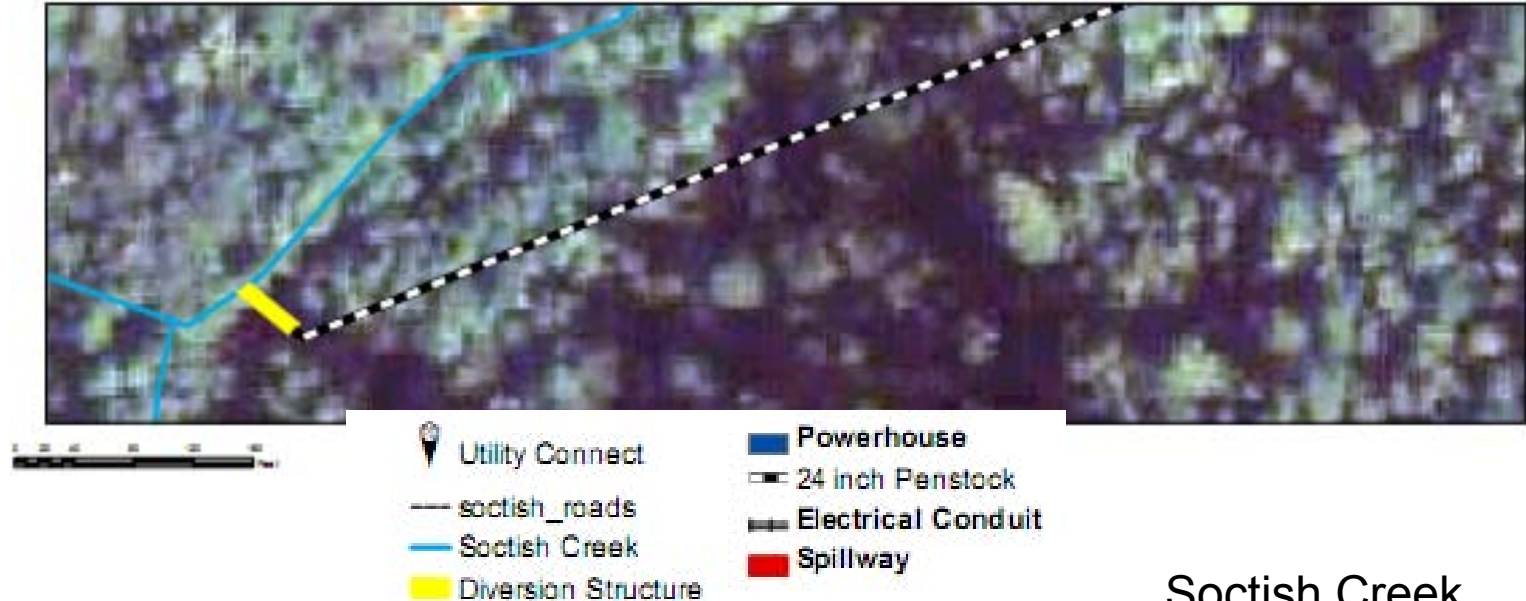
- | | |
|---|---|
|  Utility Connect |  Powerhouse |
|  socktish_roads |  24 inch Penstock |
|  Socktish Creek |  Electrical Conduit |
|  Diversion Structure |  Spillway |









Socktish Creek

Power House and Spillway Locations



Intake Structure Location



-  Utility Connect
-  soctish_roads
-  Soctish Creek
-  Diversion Structure
-  Powerhouse
-  24 inch Penstock
-  Electrical Conduit
-  Spillway

Soctish Creek

Characteristics of Hydropower for Soctish Creek

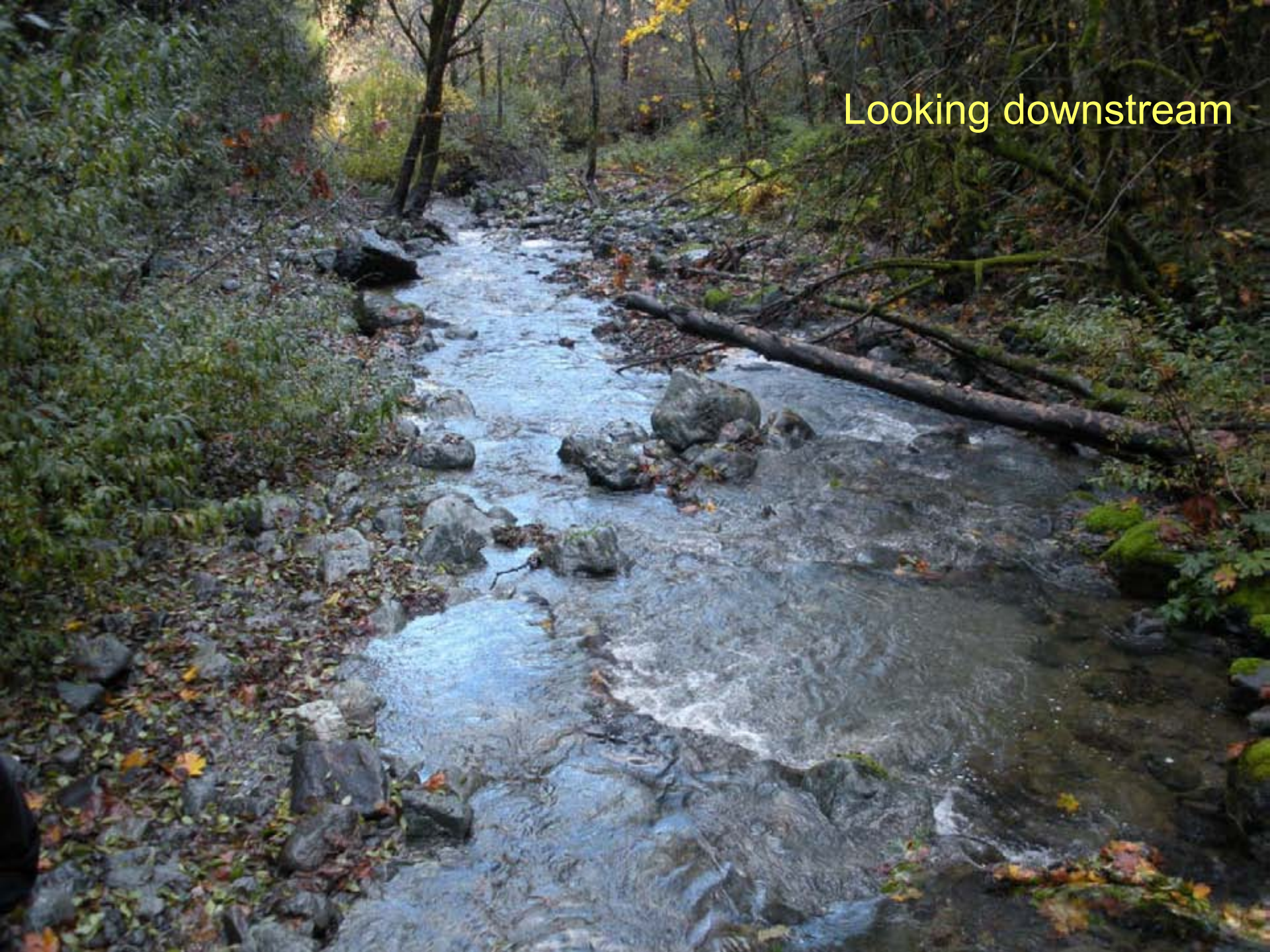
- Design Flow 32 CFS
- Base Flow for Fish 65 CFS
- Static head 80ft
- Net Head 57 ft
- Intake width 10ft
- Intake length 55ft
- Pipeline length 2350ft
- Pipe Diameter 24 inches
- Pipeline type – Epoxy Lined Steel (ELS)
- Turbine size 120kW
- Generator output 110kW
- Annual Revenue \$61,000
- Project costs \$1.514M
- Simple payback 25 years



Intake Location - Soctish Creek



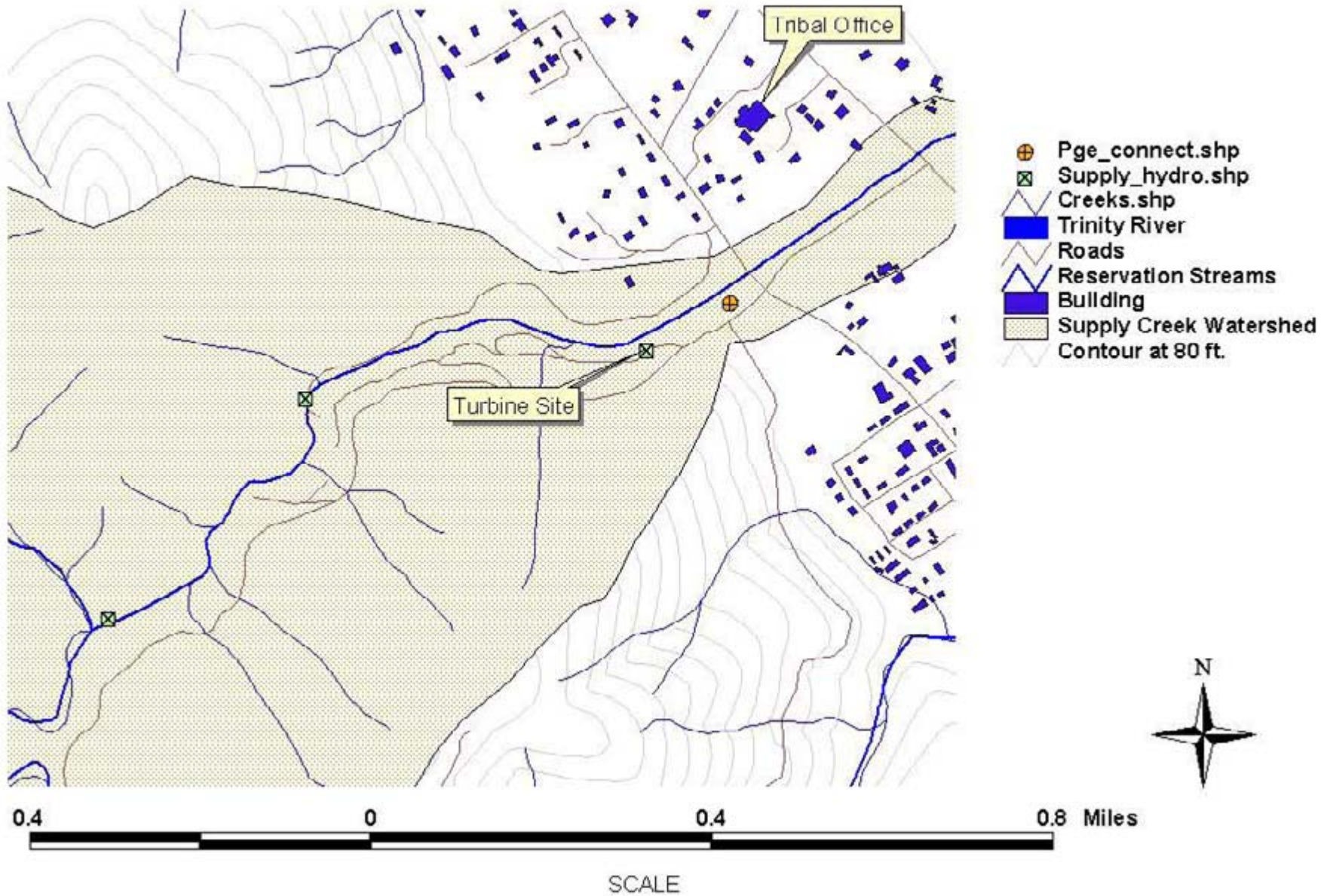
Looking downstream

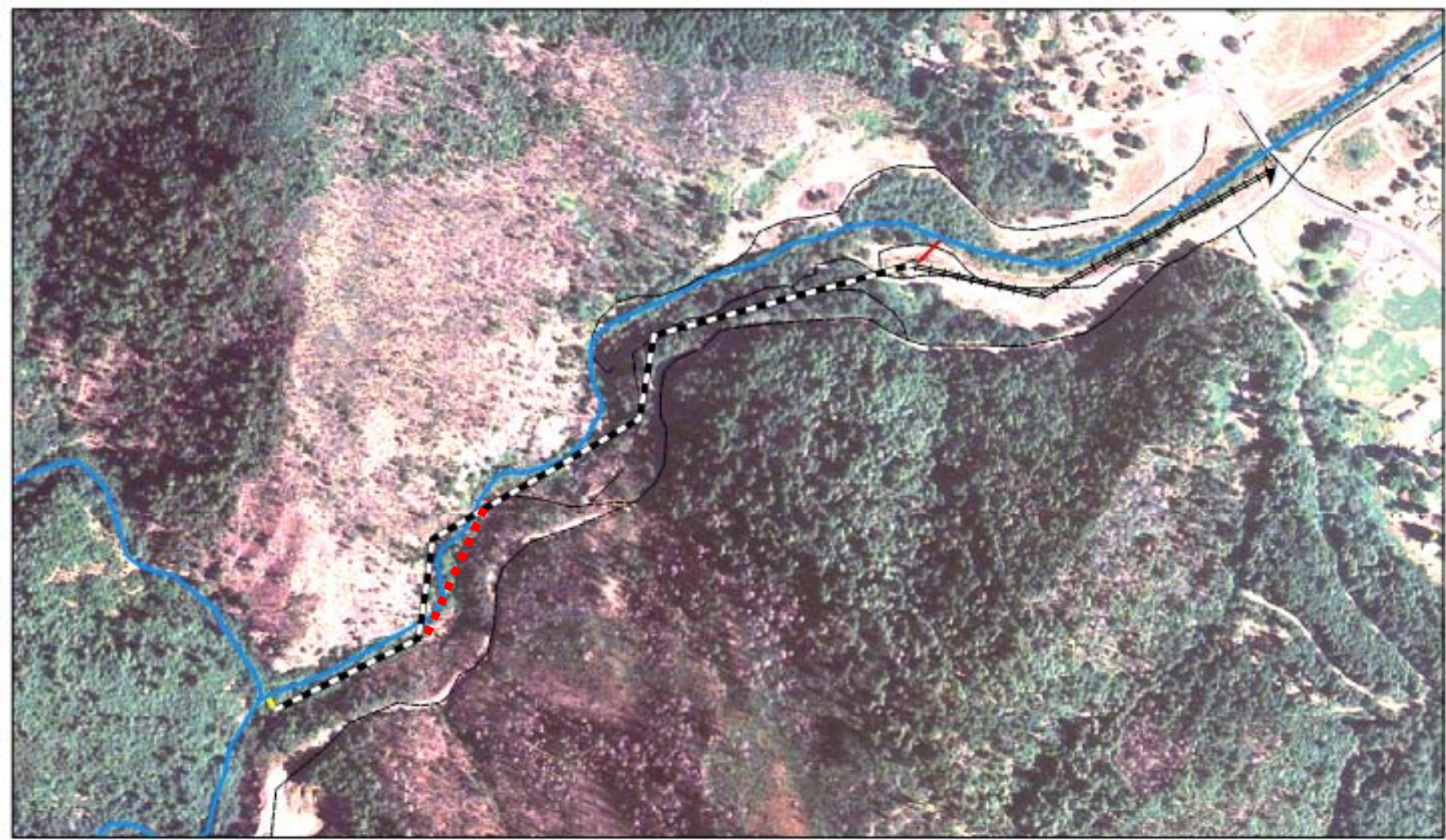














Supply creek hydro sites



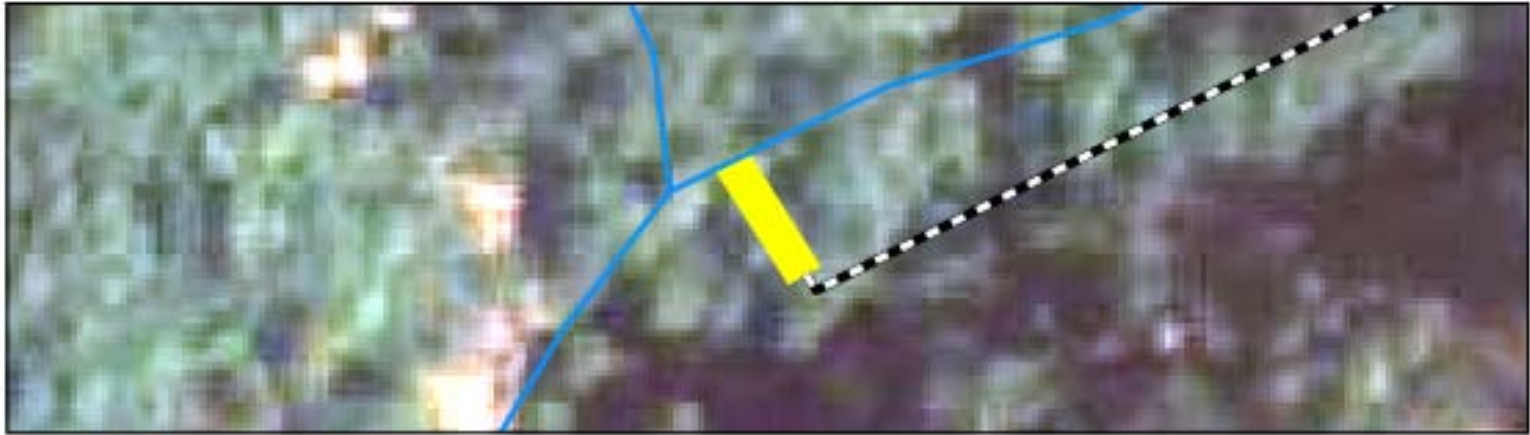


Concept Schematic for Supply Creek

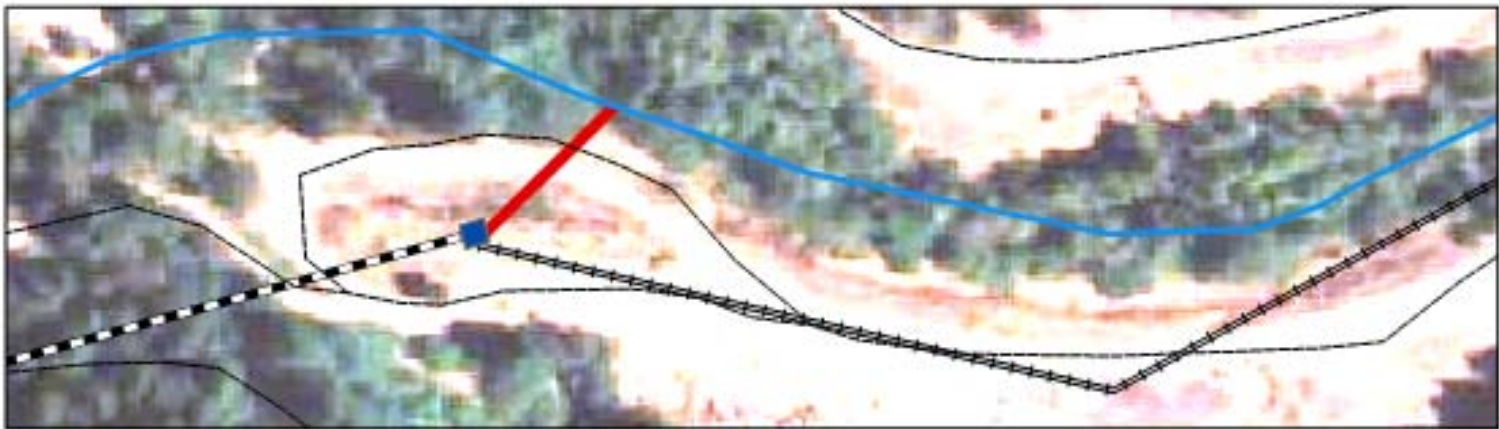
-  Utility Connect
-  Roads
-  Powerhouse
-  Supply Creek
-  30 Inch Penstock
-  Electric Conduit
-  Diversion Structure
-  Spillway









Supply Creek

Intake Structure Location



Power House and Spillway Locations



-  Utility Connect
-  Roads
-  Powerhouse
-  Supply Creek
-  30 inch Penstock
-  Electric Conduit
-  Diversion Structure
-  Spillway

Supply Creek

Characteristics of Hydropower Supply Creek

- Design flow 50cfs
- Base flow for fish 32cfs
- Intake width 15ft
- Intake length 55ft
- Static head 165ft
- Net head 146ft
- Pipeline diameter 30in
- Pipeline length 3400ft
- ELS pipe
- Turbine size 508kW
- Generator 475kW
- Annual revenue \$164,400
- Project cost \$2.347M
- Simple payback 14 years



Supply Creek Intake location











Landscape obstacle



Along pipeline route







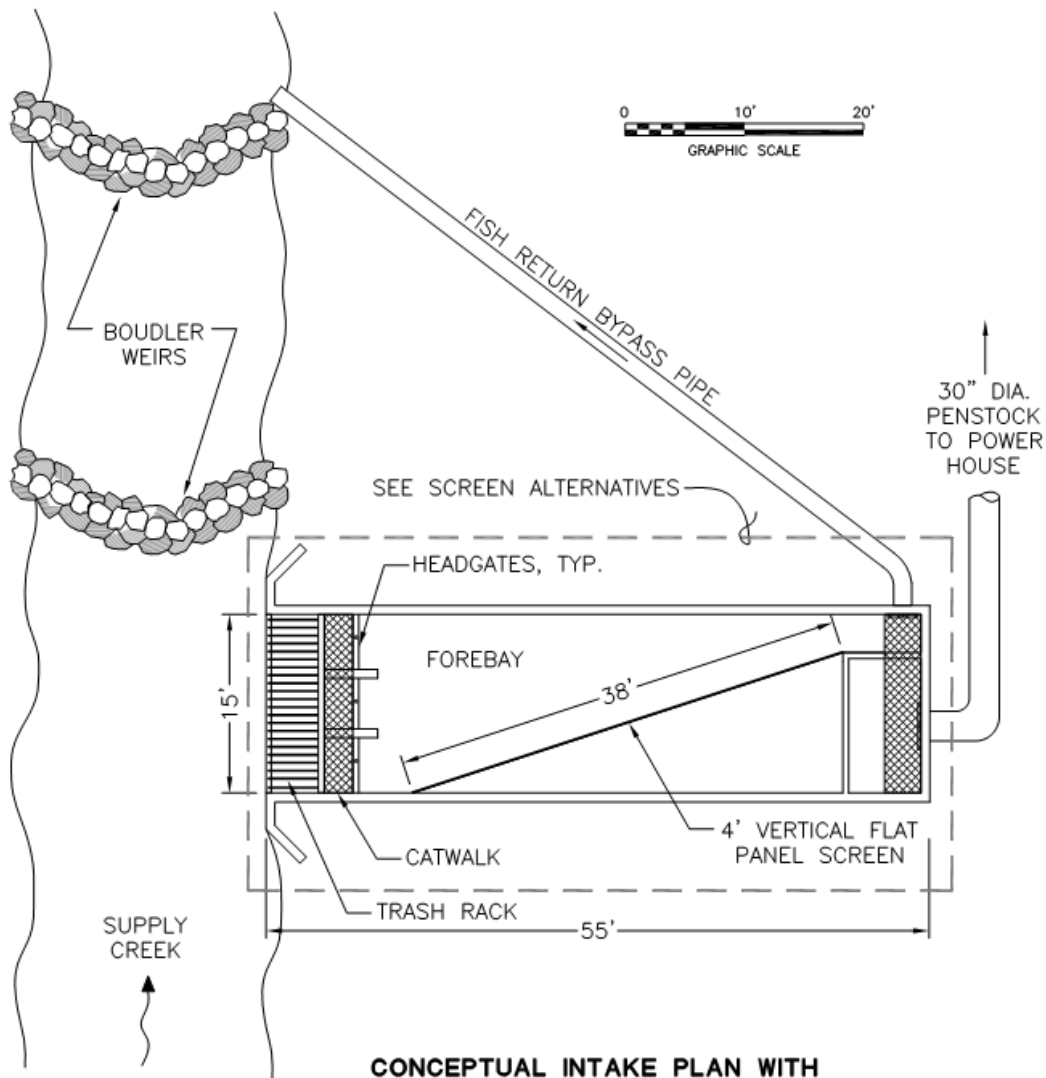


Turbine site



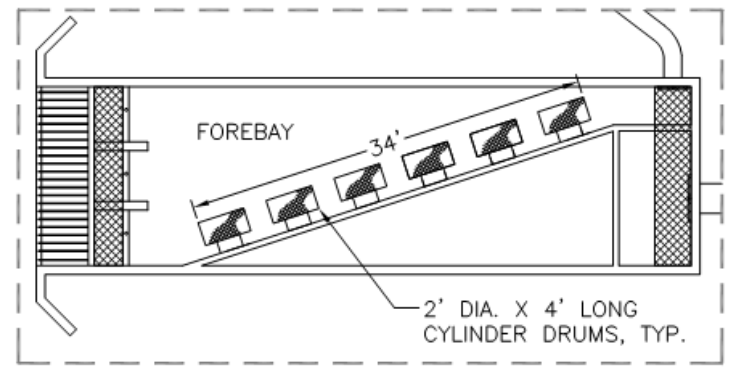
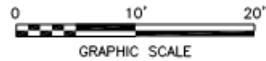
Supply Creek 1.5 ft stage 27cfs

Nov 13, 2008



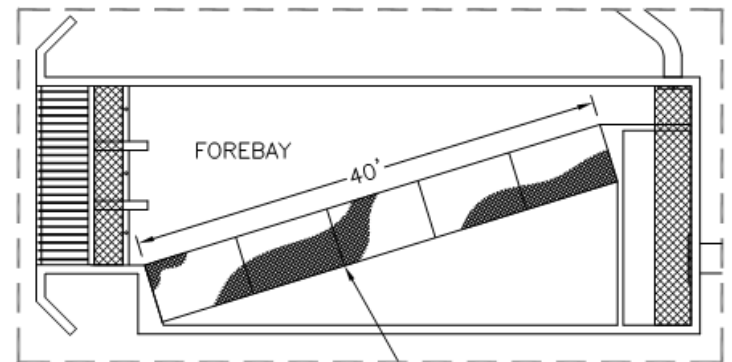
CONCEPTUAL INTAKE PLAN WITH VERTICAL FLAT PANEL SCREEN

SCALE: SEE SCALE BAR



CYLINDRICAL TEE SCREEN ARRAY

SCALE: SEE SCALE BAR



ROTARY DRUM SCREEN

SCALE: SEE SCALE BAR

SUPPLY CREEK
 CONCEPT INTAKE STRUCTURE
 FISH SCREEN ALTERNATIVES
 HOOPA VALLEY TRIBE SMALL HYDROELECTRIC
 FEASIBILITY ANALYSIS

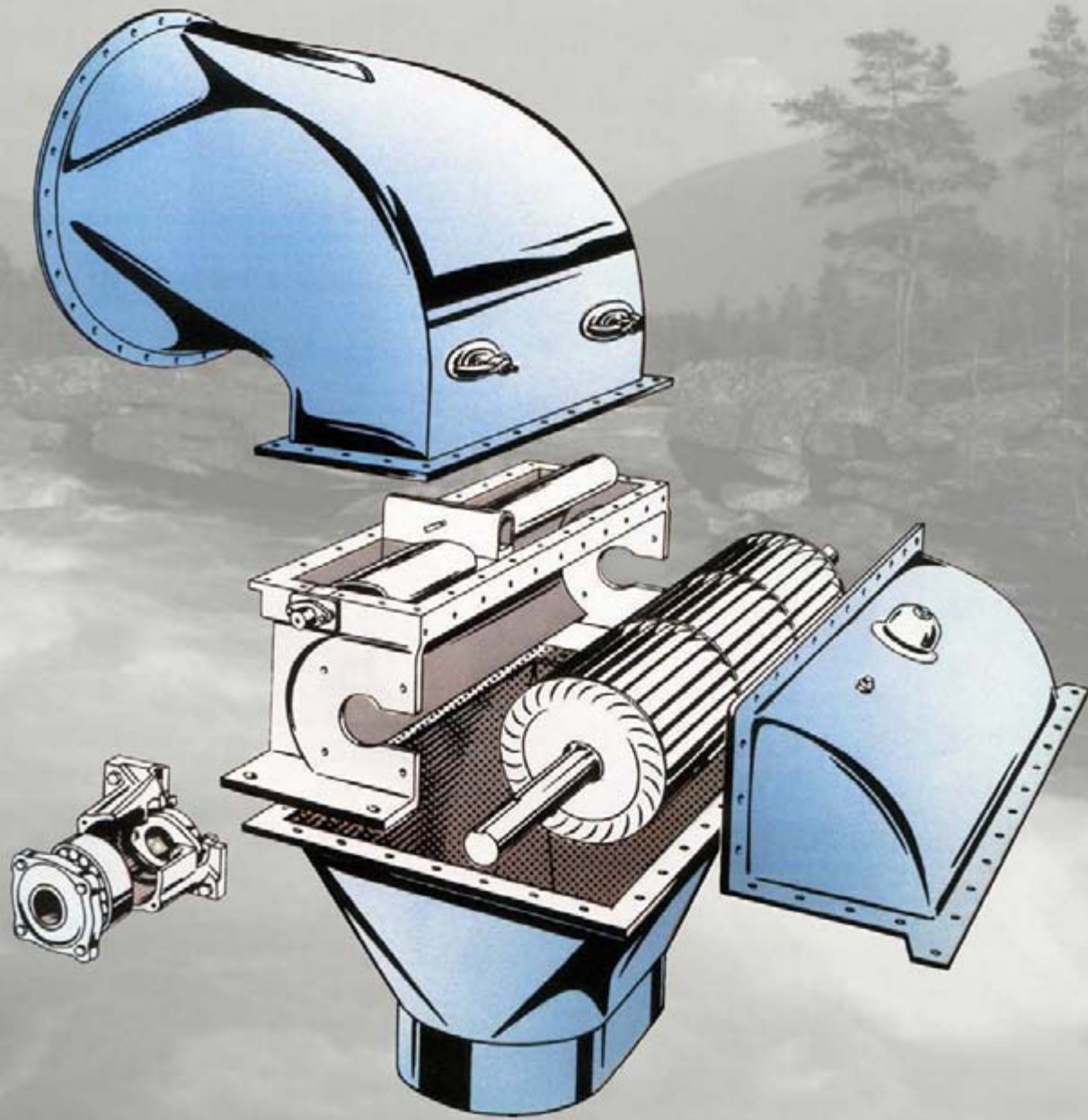


Fish Screen Specs

- 0.3 feet/sec flow through
- 1.7 feet/sec over flow



Ossberger Crossflow



Environmental Review

EIS for all projects

- comprehensive
- water quality/ quantity issues

Biological Assessment for Coho Salmon

- Endangered species

FERC license

Questions

