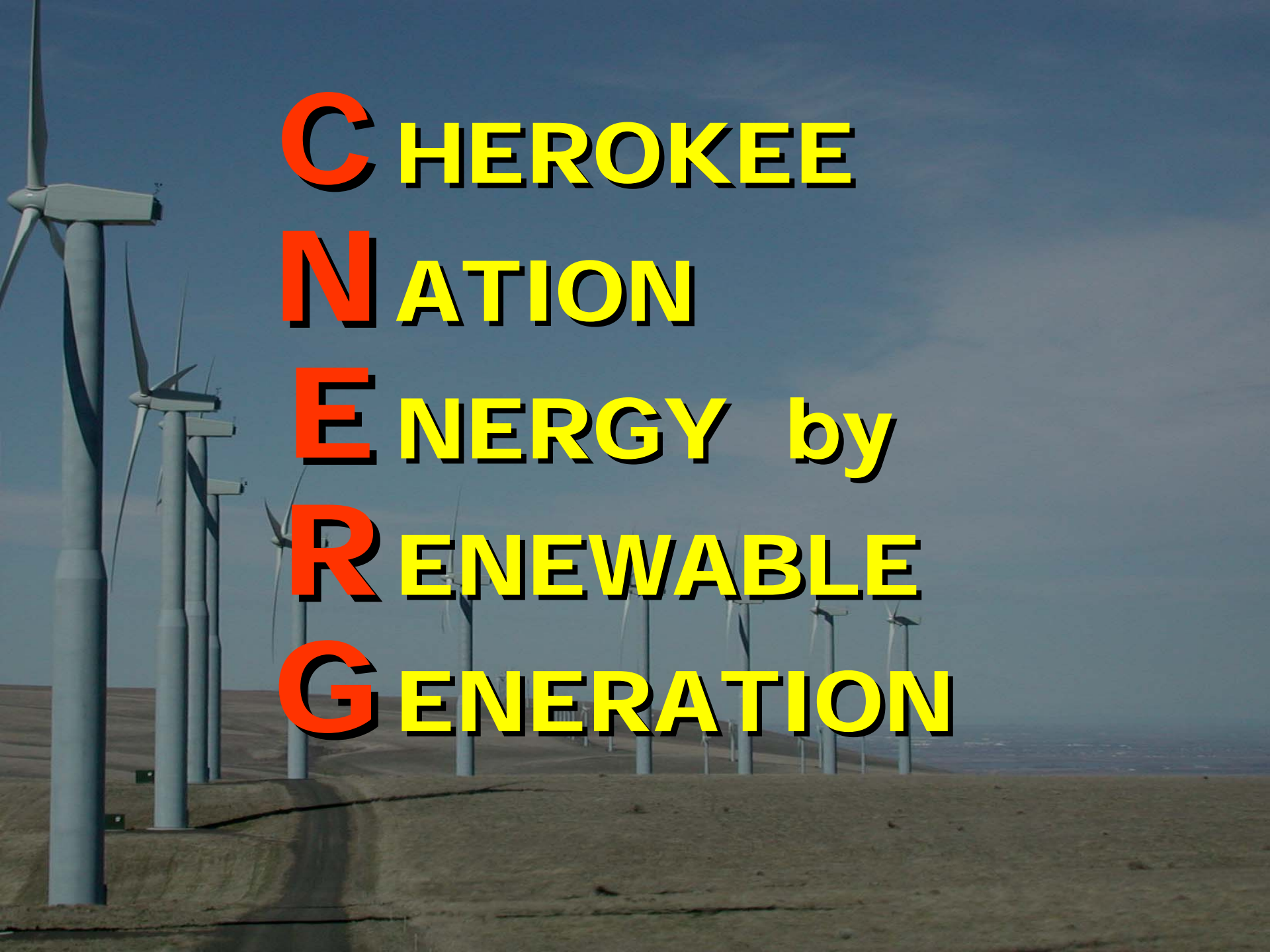


Department of Energy
Tribal Energy Program
November 6, 2007

Presented by: Carol Wyatt
Cherokee Nation Enterprises



CHEROKEE
NATION
ENERGY by
RENEWABLE
GENERATION

CNE-R-G¹

Pronounced: syn' er-gee

¹ **Cooperative interaction among groups, especially among the acquired subsidiaries or merged parts of an entity or corporation, that creates an enhanced combined effect.**



\$8,000,000+

CNE-R-G

**\$ 1.5 Million Annual Load and
Getting Bigger Every Day!**



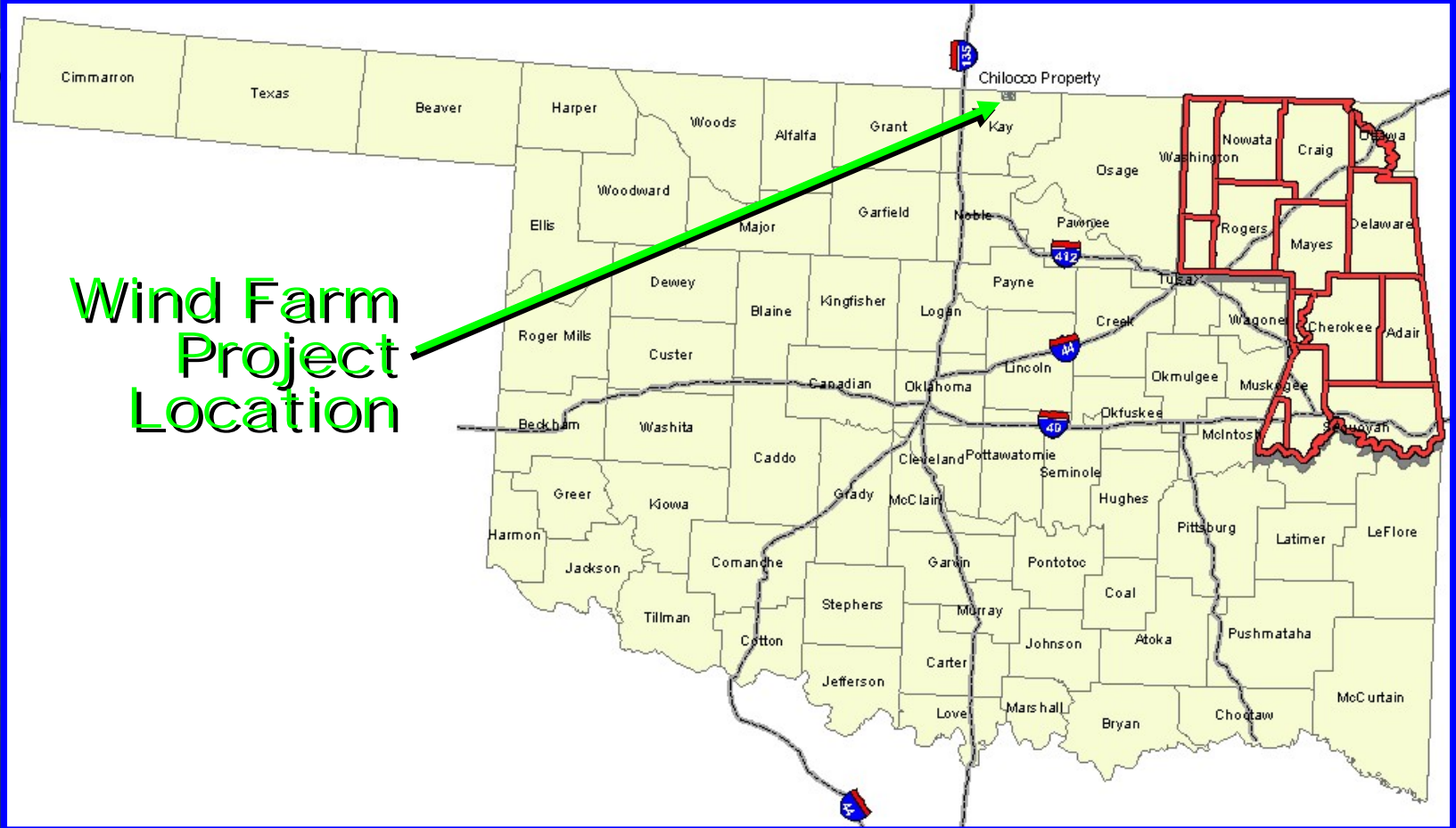
CNE-R-G

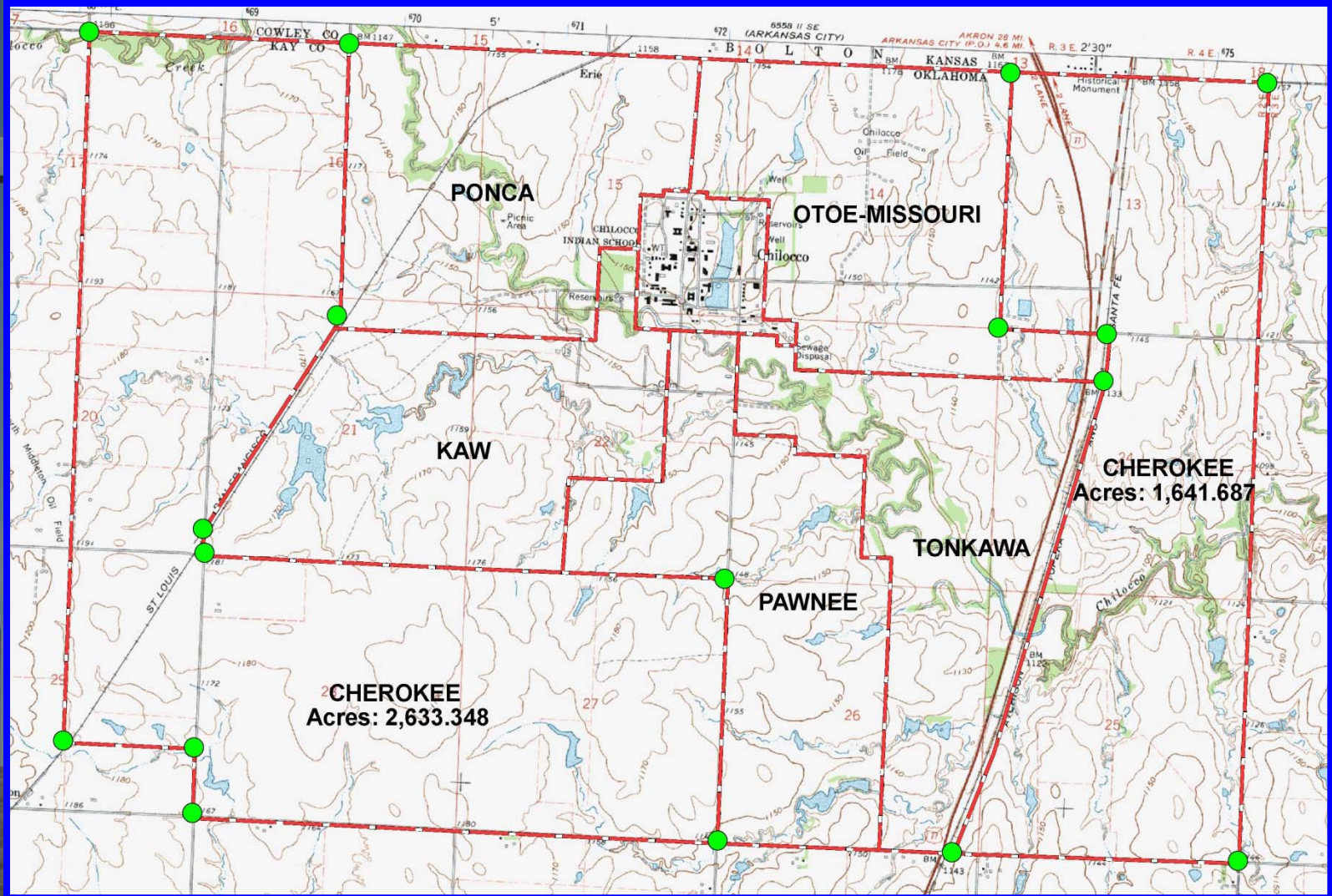


100 Meters
or 328 Feet

100 Meters
or 328 Feet

Wind Farm Project Location

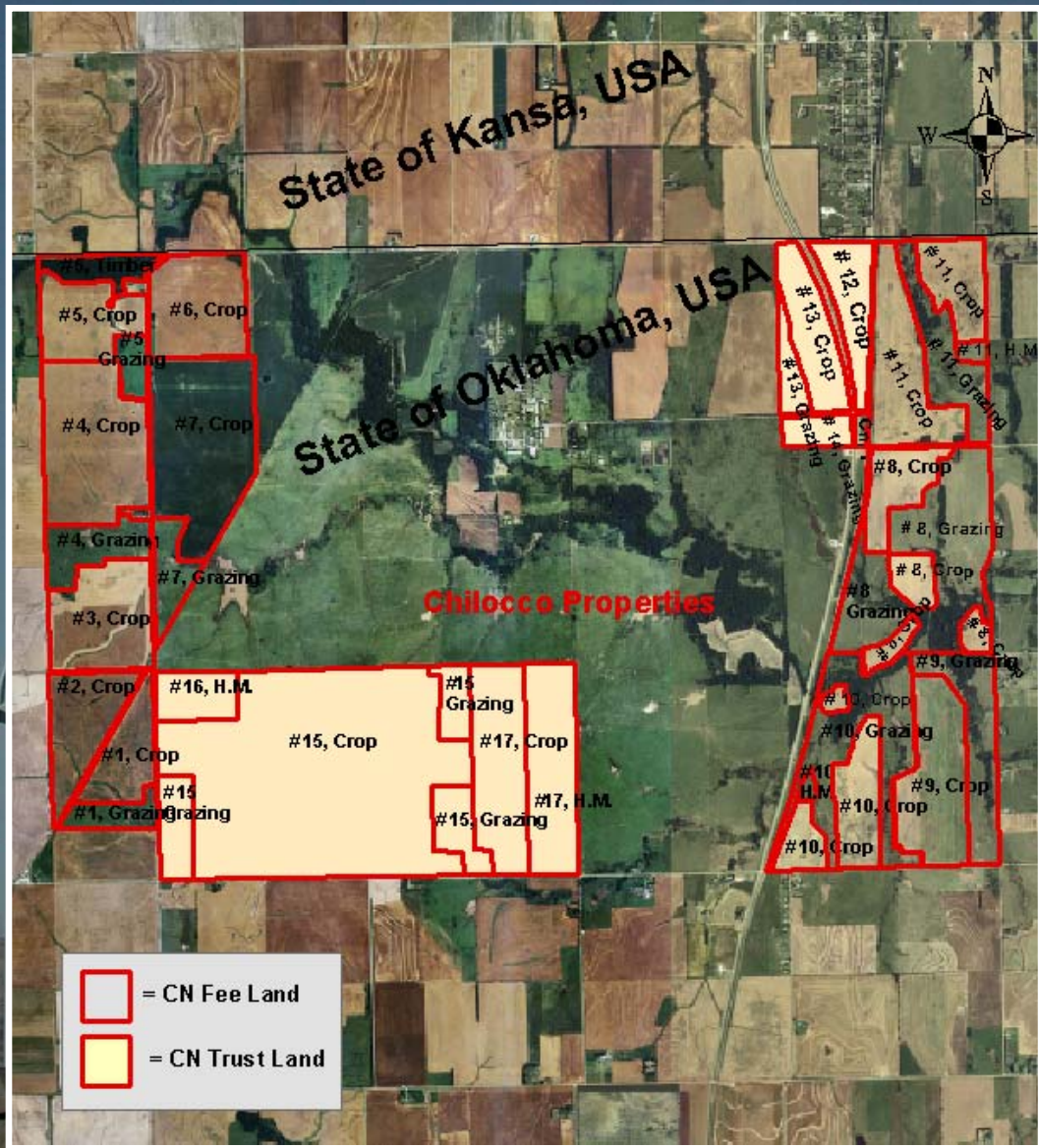




CNE-R-G

Tahlequah





Wind Speeds
Measured for
3 Years at
Chilocco. . .

Class III
Commercial
Wind!



CNE-R-G



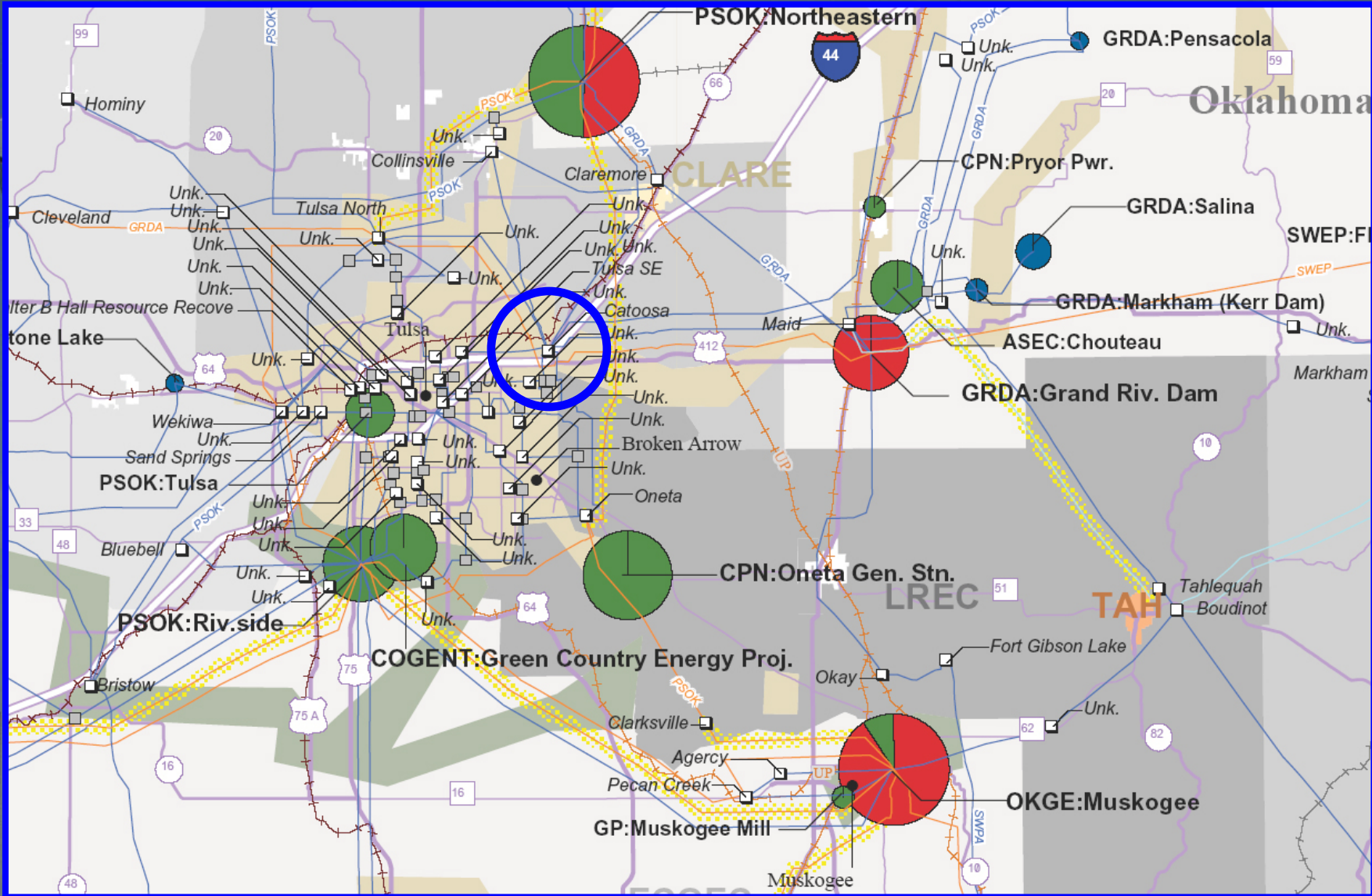
Environmental Studies





Transmission - Interconnect





CNE-R-G



Business Plan Complete

Turbine Selection

Transmission / Interconnect

Wind Energy Consultant / Developer, Joe Brignolo

CNE-R-G

Business Plan Complete

- Detailed Market Analysis
- Implementation Plan
- SWOT Analysis
 - Strengths
 - Weaknesses
 - Observations / Opportunities
 - Threats

Return on Investment Tables

The most important step in the process.

Cost of installed megawatt.

All income.


All Expenses.

= Go / No Go Decision



Cost of Installed Megawatt

A 350+ line spreadsheet which calculates the total project cost as it relates to the # of turbines and their installed capacity.



In the Cherokee Project
ROI in less than 6 years

\$393+ Million Profit after 20 years

ONLY if we own 100%

CNE-R-G

Precise Project Management

Vendor Reliability

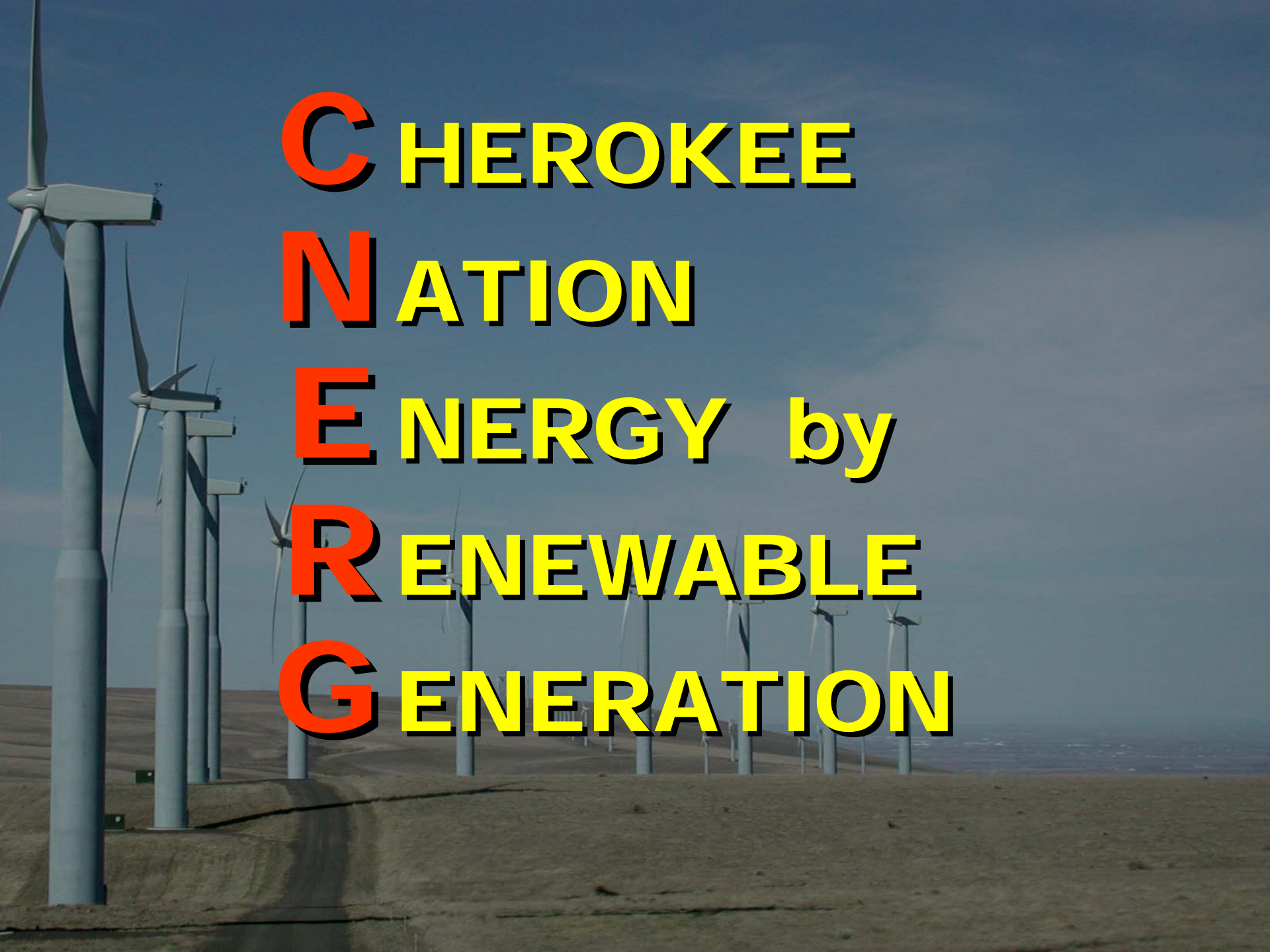
Knowledgeable Personnel

Timetables and Schedule Mgmt.

Risk Management

Risk Management

Risk Management



CHEROKEE
NATION
ENERGY by
RENEWABLE
GENERATION