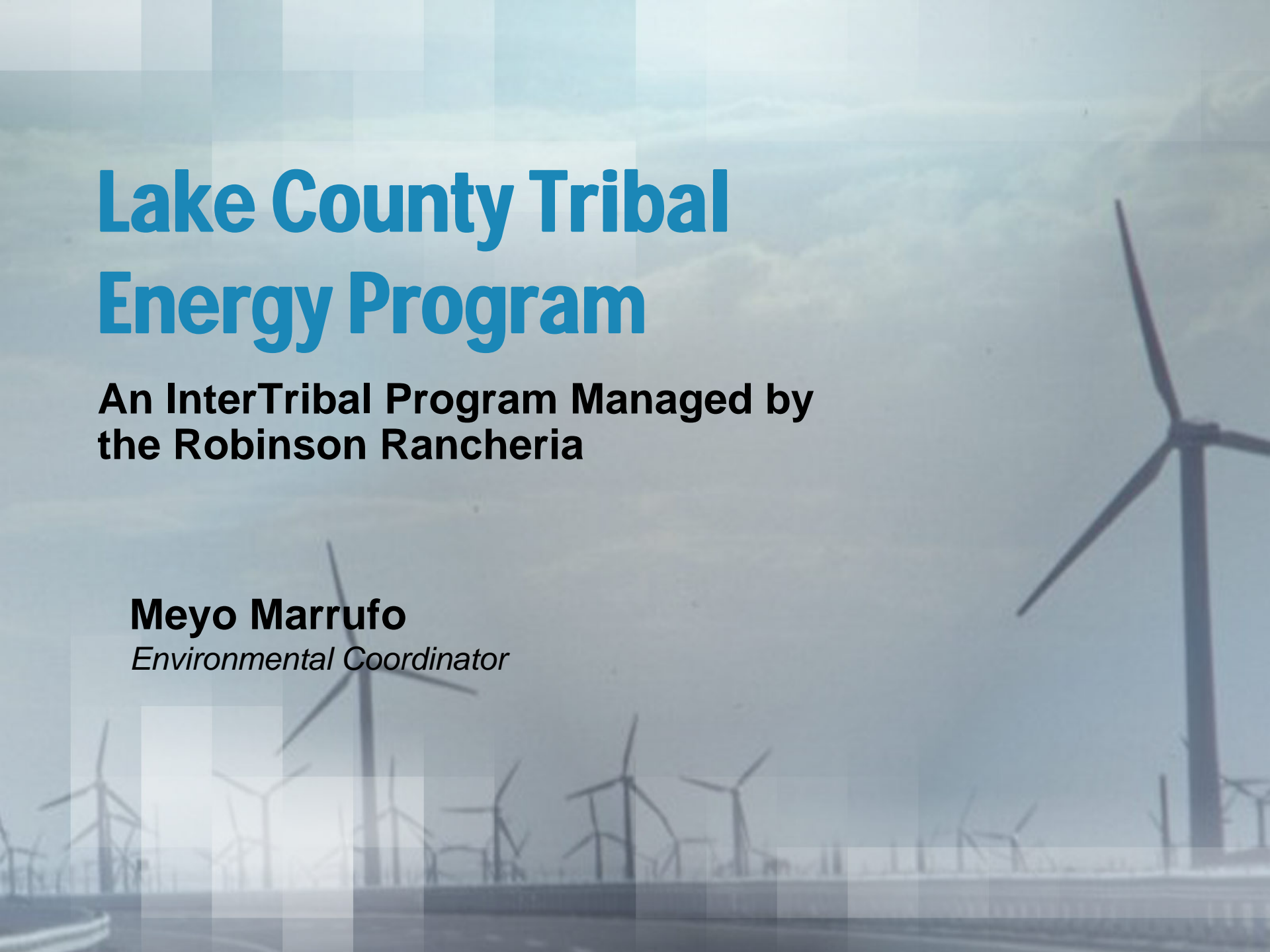


Lake County Tribal Energy Program

**An InterTribal Program Managed by
the Robinson Rancheria**

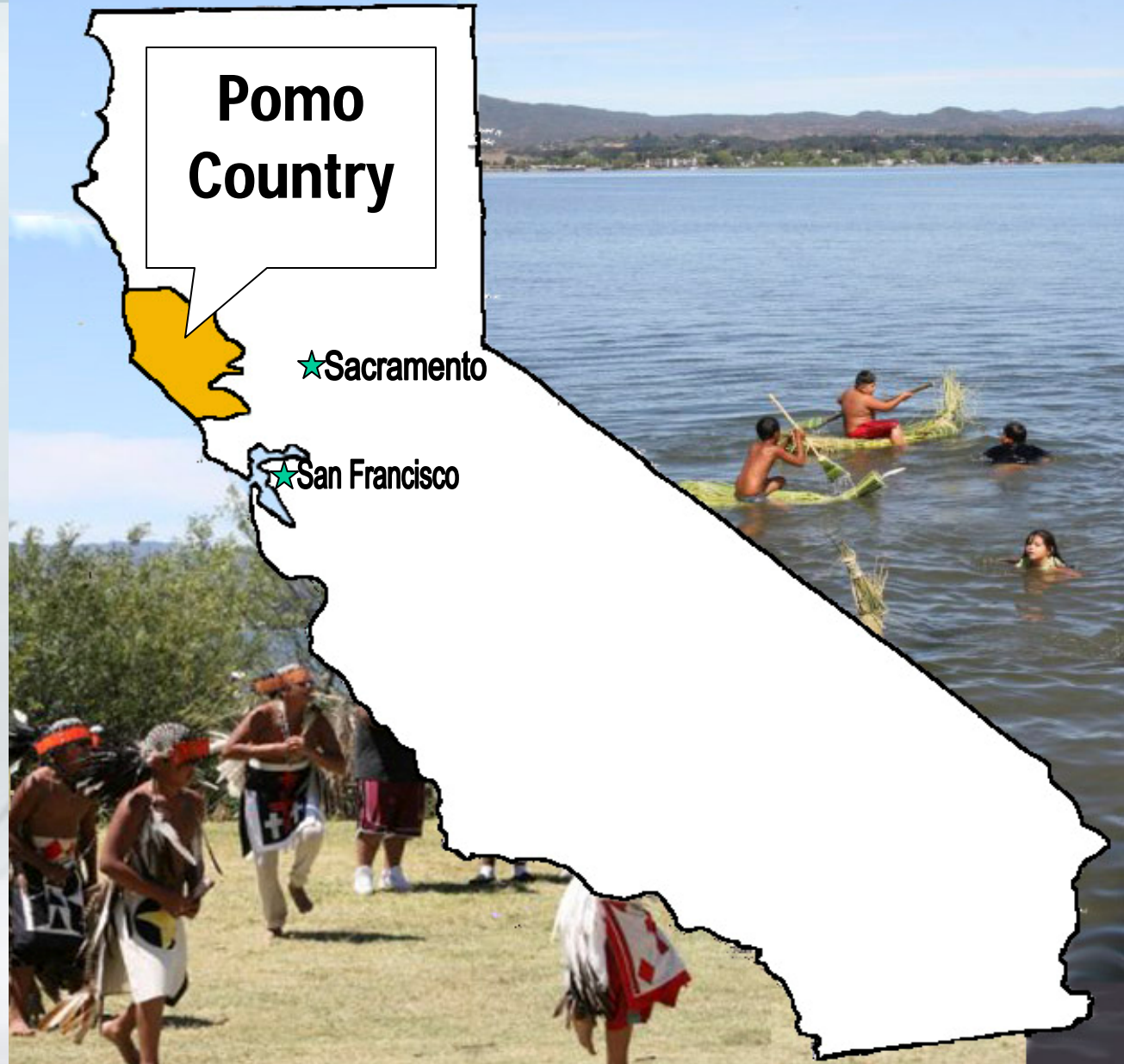
Meyo Marrufo

Environmental Coordinator



Where we are located

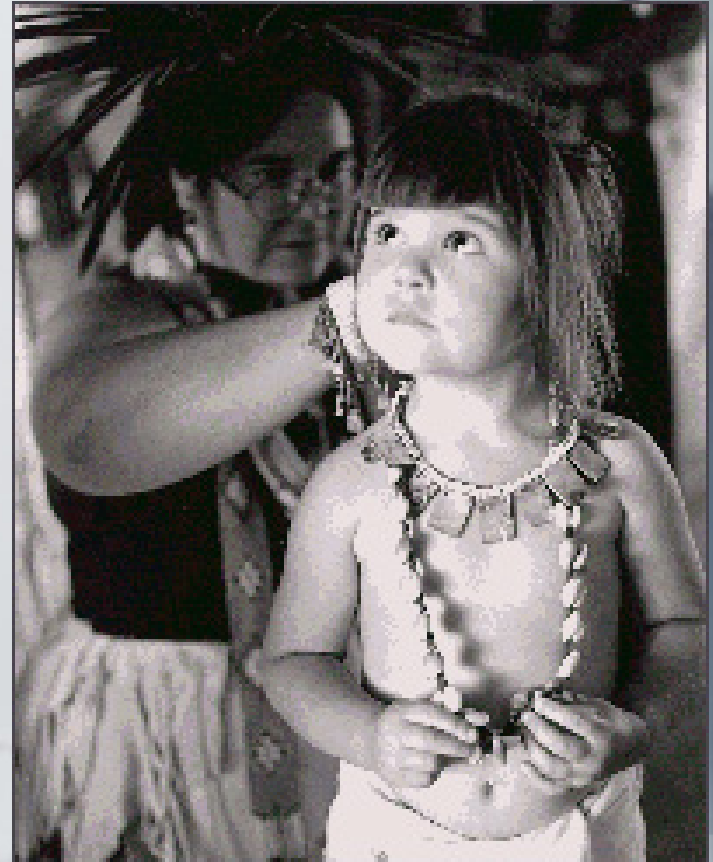
Pomo Territory covers Lake Pomo, Valley Pomo, and Coast Pomo. There are currently 26 federally recognized Pomo tribes. 6 of these tribes are Lake Pomo.



Lake County Tribal Energy Program

•A multi Tribal program to be directed by the Robinson Rancheria and include:

- Big Valley Rancheria
- Middletown Rancheria
- Elem Indian Colony
- Habematolel Pomo of Upper Lake
- Scotts Valley Pomo Tribe



Mission

Promote Tribal energy efficiency and create employment opportunities and economic opportunities on Tribal Lands through energy resource and energy efficiency development.



Objectives

- **Provide human capacity building by providing a project coordinator based at Robinson Rancheria.**
- **Compile regional data from the Tribal strategic plans for use by Tribal and local governments.**
- **Develop Strategic Energy Plans for each of the participating Tribe**

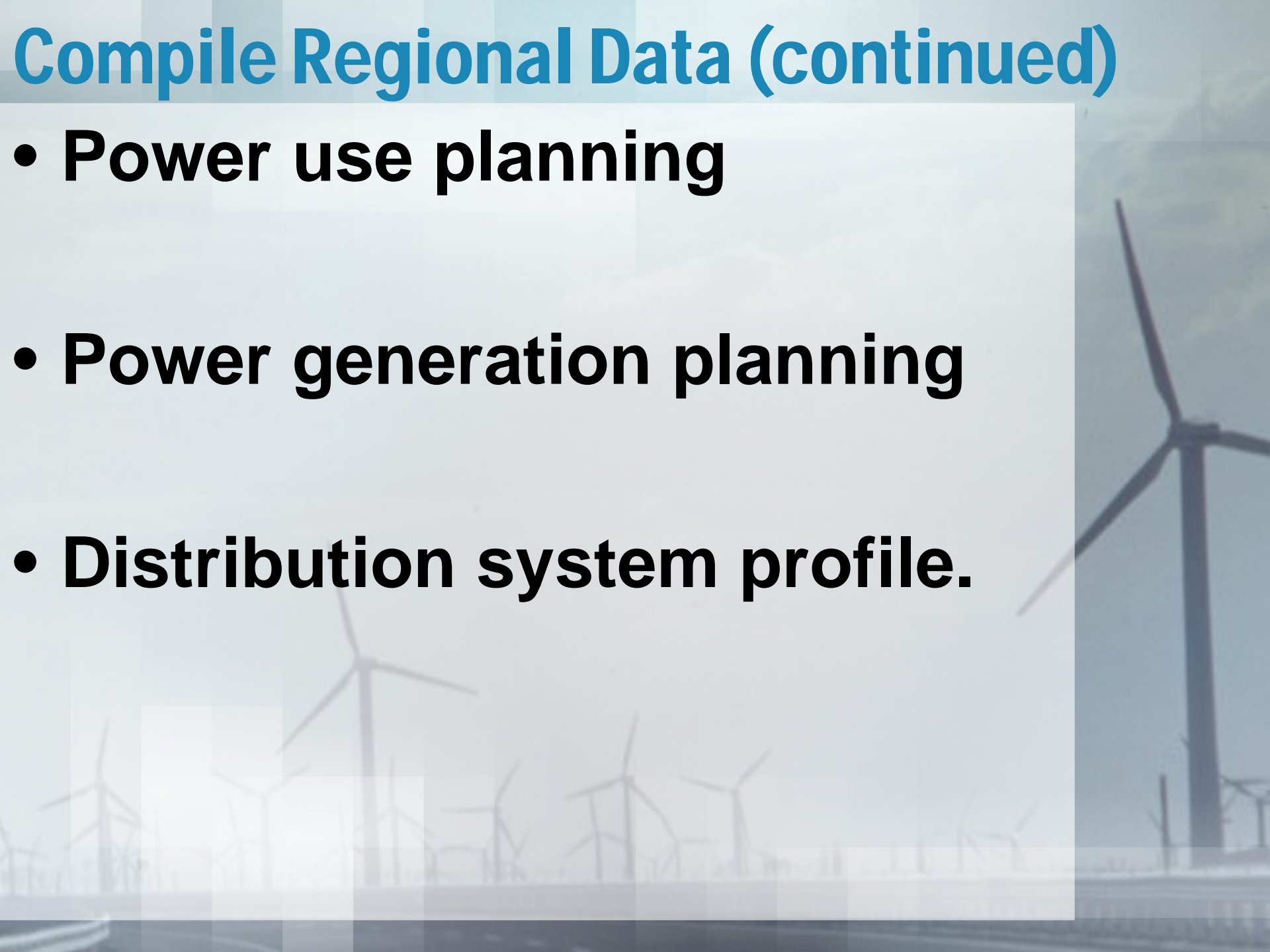
Compile Regional Data

- **Identifying current energy service providers**
- **Power use database**



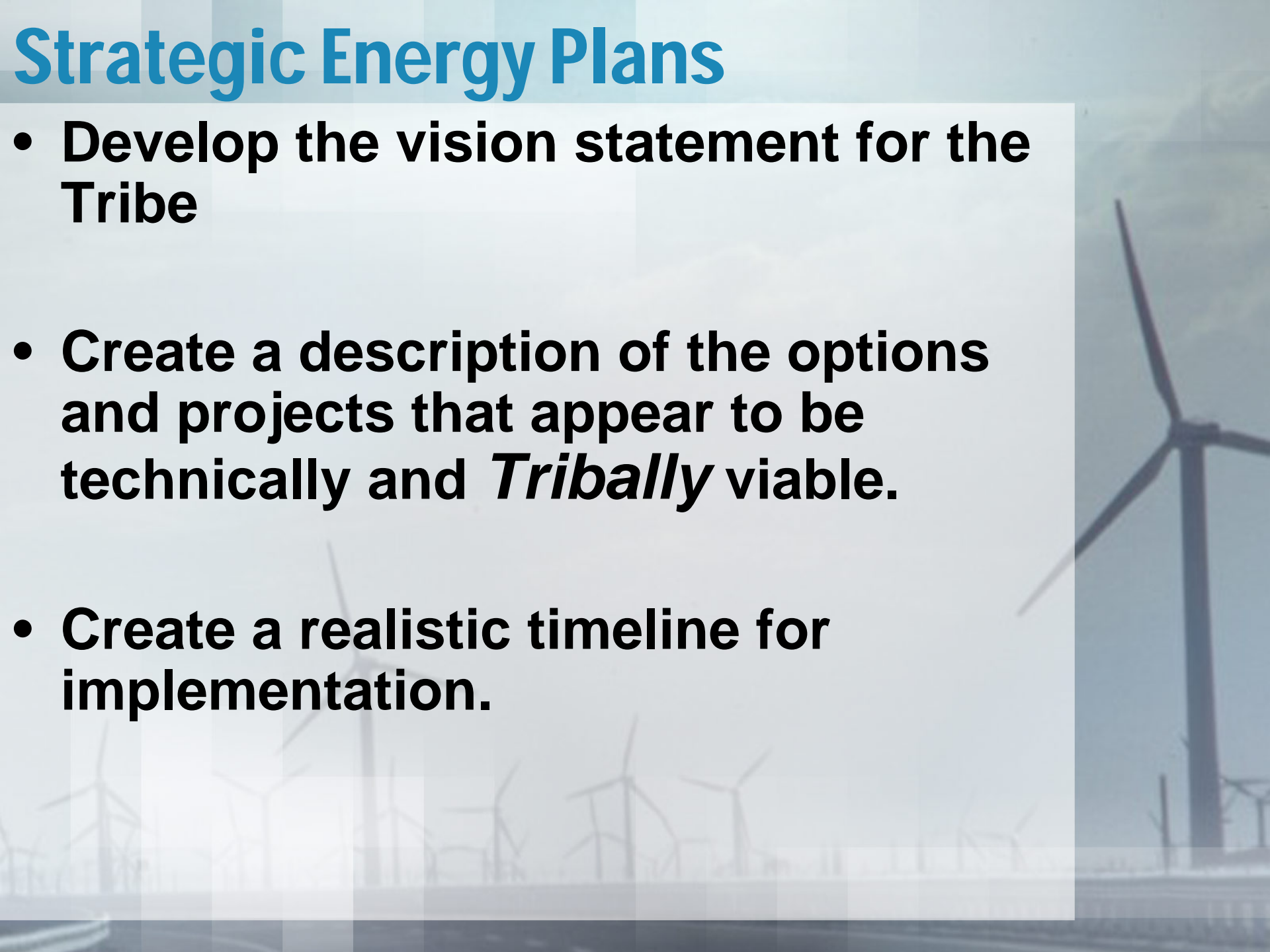
Compile Regional Data (continued)

- **Power use planning**
- **Power generation planning**
- **Distribution system profile.**



Strategic Energy Plans

- **Develop the vision statement for the Tribe**
- **Create a description of the options and projects that appear to be technically and *Tribally* viable.**
- **Create a realistic timeline for implementation.**



Similarities

- **All the Lake County Tribes share similar issues and resources**
- **All the Lake County Tribes are at the same place in planning – the beginning**



Lake County Tribal Energy Program

The background of the slide features a blurred image of a wind turbine field. A large wind turbine is prominent on the right side, with its three blades extending outwards. The rest of the field is visible in the background, creating a sense of depth. The overall color palette is muted, with greys and blues.

In summary, energy data is lacking from the tools available to Tribal decision makers. Energy use data, the real grunt work of good energy planning, is important to a number of Tribal planning needs from economic development to emergency preparedness and to meeting future energy needs.