

# Penobscot Indian Nation

Tribal Energy Program 2005 Program Review

## Strategic Energy Plan



Presented by: Mike Sockalexis

# Directions to Penobscot Nation



**Legend:**

- Buildings & Houses
- Major Route to PIN
- Fire Hydrants
- Roads & Streets
- Side Walk
- Driveway
- Parking & Paved
- Fence
- Cemetery

**Scale:**  
 0 100 200 300 400  
 15,000 1 inch equals 750 feet



Insert Map of the Business Area

**Wabanaki Way Business Area**  
 See detail or sketchup

Location of Indian Island

**Map Detail 1:**

- ①  
 Office Interiors  
 27  
 28  
 29  
 30  
 31  
 16  
 14  
 13  
 12  
 11  
 10  
 9  
 8  
 7  
 6  
 5  
 4  
 3  
 2  
 1  
 0  
 1  
 2  
 3  
 4  
 5  
 6  
 7  
 8  
 9  
 10  
 11  
 12  
 13  
 14  
 15  
 16  
 17  
 18  
 19  
 20  
 21  
 22  
 23  
 24  
 25  
 26  
 28  
 29  
 30  
 31  
 32  
 33  
 34  
 35  
 36  
 37  
 38  
 39  
 40  
 41  
 42  
 43  
 44  
 45  
 46  
 47  
 48  
 49  
 50  
 51  
 52  
 53  
 54  
 55  
 56  
 57  
 58  
 59  
 60  
 61  
 62  
 63  
 64  
 65  
 66  
 67  
 68  
 69  
 70  
 71  
 72  
 73  
 74  
 75  
 76  
 77  
 78  
 79  
 80  
 81  
 82  
 83  
 84  
 85  
 86  
 87  
 88  
 89  
 90  
 91  
 92  
 93  
 94  
 95  
 96  
 97  
 98  
 99  
 100
- ②  
 DNR  
 DTR  
 FRED  
 BCS

**Map Detail 2:**

- 10  
 11  
 12  
 13  
 14  
 15  
 16  
 17  
 18  
 19  
 20  
 21  
 22  
 23  
 24  
 25  
 26  
 27  
 28  
 29  
 30  
 31  
 32  
 33  
 34  
 35  
 36  
 37  
 38  
 39  
 40  
 41  
 42  
 43  
 44  
 45  
 46  
 47  
 48  
 49  
 50  
 51  
 52  
 53  
 54  
 55  
 56  
 57  
 58  
 59  
 60  
 61  
 62  
 63  
 64  
 65  
 66  
 67  
 68  
 69  
 70  
 71  
 72  
 73  
 74  
 75  
 76  
 77  
 78  
 79  
 80  
 81  
 82  
 83  
 84  
 85  
 86  
 87  
 88  
 89  
 90  
 91  
 92  
 93  
 94  
 95  
 96  
 97  
 98  
 99  
 100

**Map Detail 3:**

- 10  
 11  
 12  
 13  
 14  
 15  
 16  
 17  
 18  
 19  
 20  
 21  
 22  
 23  
 24  
 25  
 26  
 27  
 28  
 29  
 30  
 31  
 32  
 33  
 34  
 35  
 36  
 37  
 38  
 39  
 40  
 41  
 42  
 43  
 44  
 45  
 46  
 47  
 48  
 49  
 50  
 51  
 52  
 53  
 54  
 55  
 56  
 57  
 58  
 59  
 60  
 61  
 62  
 63  
 64  
 65  
 66  
 67  
 68  
 69  
 70  
 71  
 72  
 73  
 74  
 75  
 76  
 77  
 78  
 79  
 80  
 81  
 82  
 83  
 84  
 85  
 86  
 87  
 88  
 89  
 90  
 91  
 92  
 93  
 94  
 95  
 96  
 97  
 98  
 99  
 100



# Penobscot Indian Nation

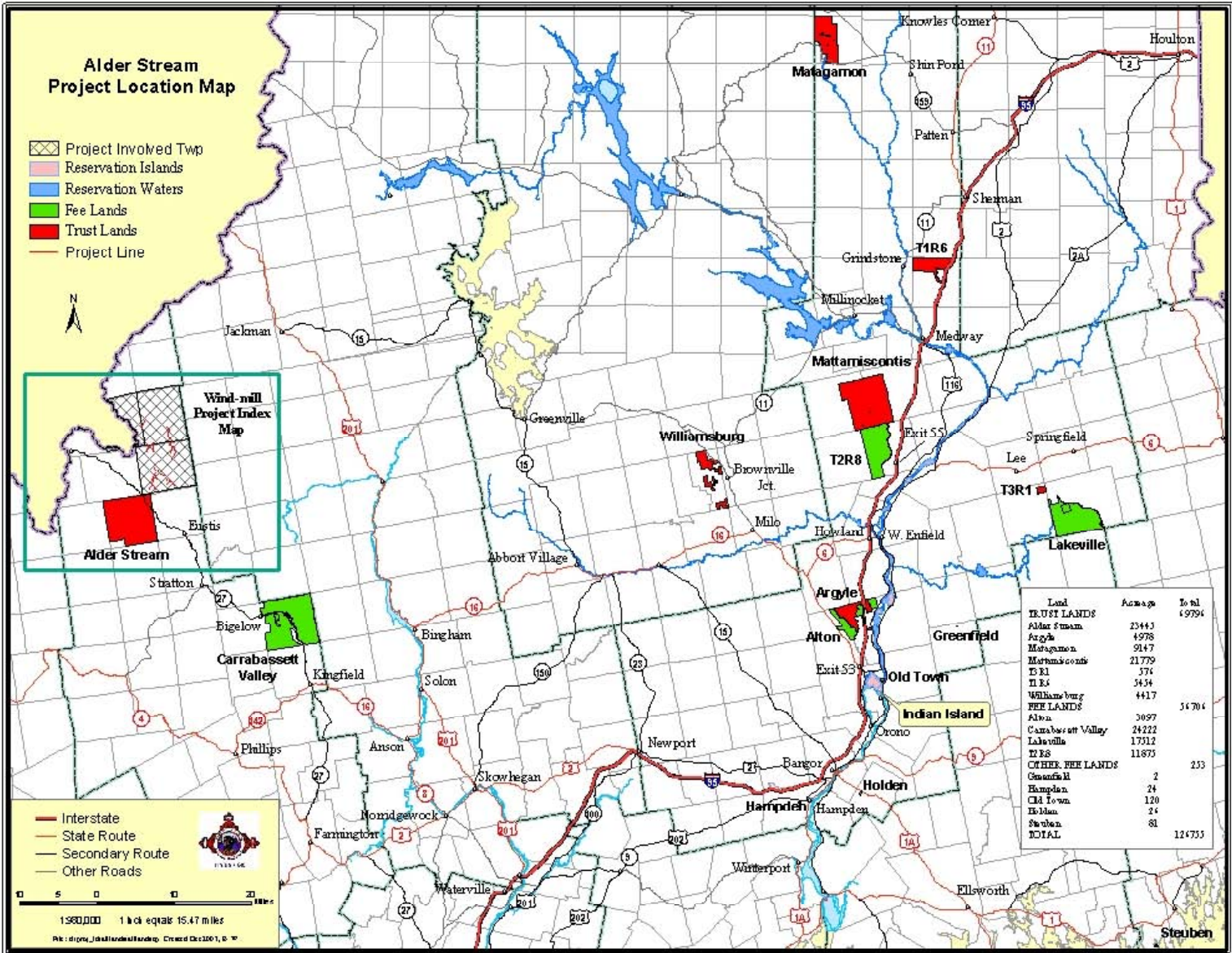
- 2,261 members
- 118,885 acres of land
- Significant water rights on the Penobscot River and its tributaries
- Significant wind potential on western Maine Trust Lands
- Biomass potential in our forest lands

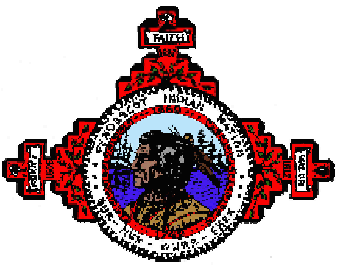
### Alder Stream Project Location Map

- Project Involved Twp
- Reservation Islands
- Reservation Waters
- Fee Lands
- Trust Lands
- Project Line



Land	Acres	Total
<b>TRUST LANDS</b>		6,979.4
Alder Stream	2,344.3	
Argyle	4,978	
Maragamon	914.7	
Mattamiscotic	21,779	
E.K.I.	574	
T.I.E.s	54.54	
Williamsburg	441.7	
<b>FEE LANDS</b>		34,704
Alma	3,097	
Carrabassett Valley	24,222	
Lakeville	17,512	
T.I.E.s	11,875	
<b>OTHER FEE LANDS</b>		253
Commercial	2	
Hamden	24	
Old Town	120	
Holden	24	
Steuben	81	
<b>TOTAL</b>		124,753





# Background of Application

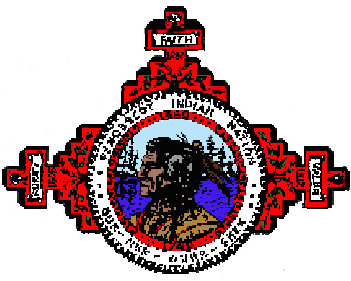
---

- Tribe requested funds under: “First Steps Toward Developing Renewable Energy and Energy Efficiency on Tribal Lands”
- Application developed by Tribe and North Atlantic Energy Advisors
- Grant awarded in June, 2005
- Start date: September 1, 2005



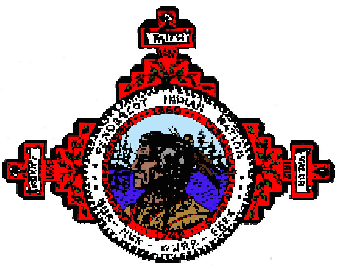
# Expected Outcome

- Strategic energy plan, including:
  - Baseline assessment, or “Where we are”
  - Vision, goals and objectives, or “Where we want to be”
  - Action plan, or “How you’re going to get there”
- Our focus is on renewable energy and energy efficiency options
- Result: Long-term sustainable plan for energy self-sufficiency or energy development on tribal lands



# Consultant Roles

- Provide technical and process guidance for developing the Strategic Energy Plan
- Help match national lab resources to tribal needs
- Help identify additional contractors as necessary
  - Develop RFQ(s)
  - Assist Energy Committee in selection process
  - Provide input on contractor work product and deliverables
- Help develop a function statement and position description for a Tribal Energy Director
- Assist the Tribal Energy Director in the performance of his duties

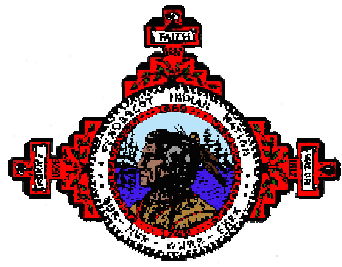


# Energy Committee Roles

---

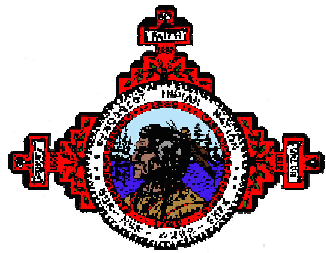
- Provide access to data (energy audits, resource assessments, etc) already completed
- Participate in creating energy vision, goals and objectives
- Review and comment on consultant drafts





# Initial Steps - 1

- We are collecting data, reports etc. already completed for consultants to review as background
- Beginning the visioning process
  - Vision, goals and objectives
- Developing Action Plan
  - Identify and assess specific opportunities
  - Identify funding required and funding sources



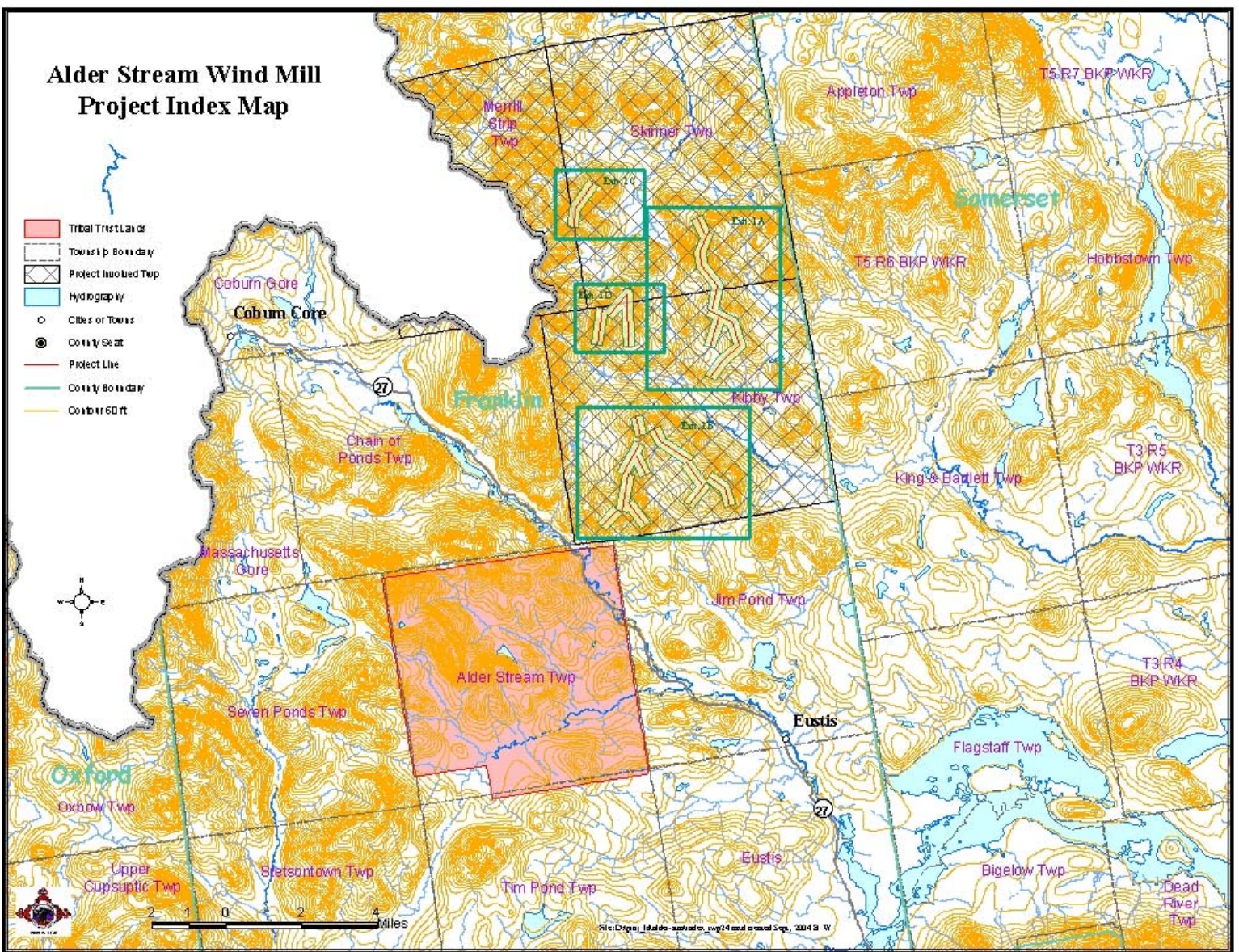
# Initial Steps - 2

- Prepare RFQs for specific technical work as needed, e.g.
  - Building and process energy audits
  - Hydro-electric turbine technology and stream flow assessment
  - Wind resource assessment and early project development
  - Biomass feasibility analysis

**The Strategic Energy Plan is a framework—the assessments may not be implemented in this phase**

# Alder Stream Wind Mill Project Index Map

-  Tribal Trust Lands
-  Township Boundary
-  Project Involved Twp
-  Hydrography
-  Cities or Towns
-  County Seat
-  Project Line
-  County Boundary
-  Contour 50 ft

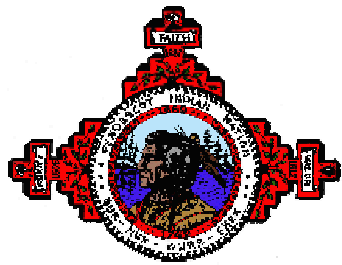


File: D:\proj\_10446-2014\mxd\proj24.mxd created Sep. 2014 9:10 W

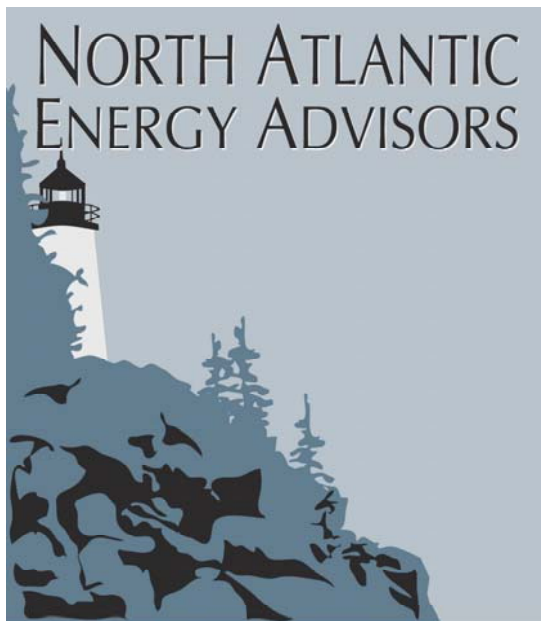


# Additional Tasks

- Energy efficiency
  - Identify sources of funding to conduct facility surveys
  - Assess tribal facilities
  - Identify and prioritize specific efficiency improvements
  - Identify sources of potential funding for improvements
  - Reduce cost of energy consumed by Tribe
- Energy purchase economies through bulk purchases
- Renewable energy
  - Identify sources of funding to conduct resource assessments (biomass, wind and hydro)
  - Assess environmental and economic viability
  - Develop energy resources in an environmentally acceptable and economically viable manner
  - Maximize both revenue to the Tribe and tribal control over its own resources



# Tribal Consultants



**ED HOLT  
& Associates, Inc.**

*Energy Smart Consulting*

Presented by: Mike Sockalexis