



# Next Step for STEP

Tribal Energy Program Review  
Denver, Colorado  
November 13, 2012  
Siletz Tribal Energy Program (STEP)  
Claire Wood, Project Coordinator  
[clairew@ctsi.nsn.us](mailto:clairew@ctsi.nsn.us)



# Outline

- Overview
  - Siletz Tribe
  - Siletz Tribal Energy Program (STEP)
- Summary of objectives of First Steps grant
- Progress to date
- Activities to come
- Lessons learned
- Next steps



# Overview

- Tribal Description
- Grants
  - ANA-ACF/DHHS
  - EECBG-DOE ARRA
  - Low Income Weatherization from DOE as a sub grantee of the state of Oregon
  - BPA
  - Climate Showcase Communities-EPA
  - First Steps-DOE



# Overview continued

- General energy efficiency and conservation education for tribal members and employees
- Specialized Training
- Energy Audit
- Retrofit
- Plans and codes
- GHG inventory
- Renewable energy demonstration project



# Description of CTSI

- CTSI is a federally recognized tribe composed of at least 27 bands originally in Western Oregon
- Current membership is 4,907
- 9 member Tribal Council





# Description of CTSI

- Each Council representative serves a three year term, 3 elected each year
- Removed from Southern Oregon to Coast Reservation in 1856
- Land base continued to be reduced





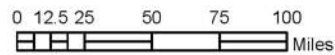
# United States



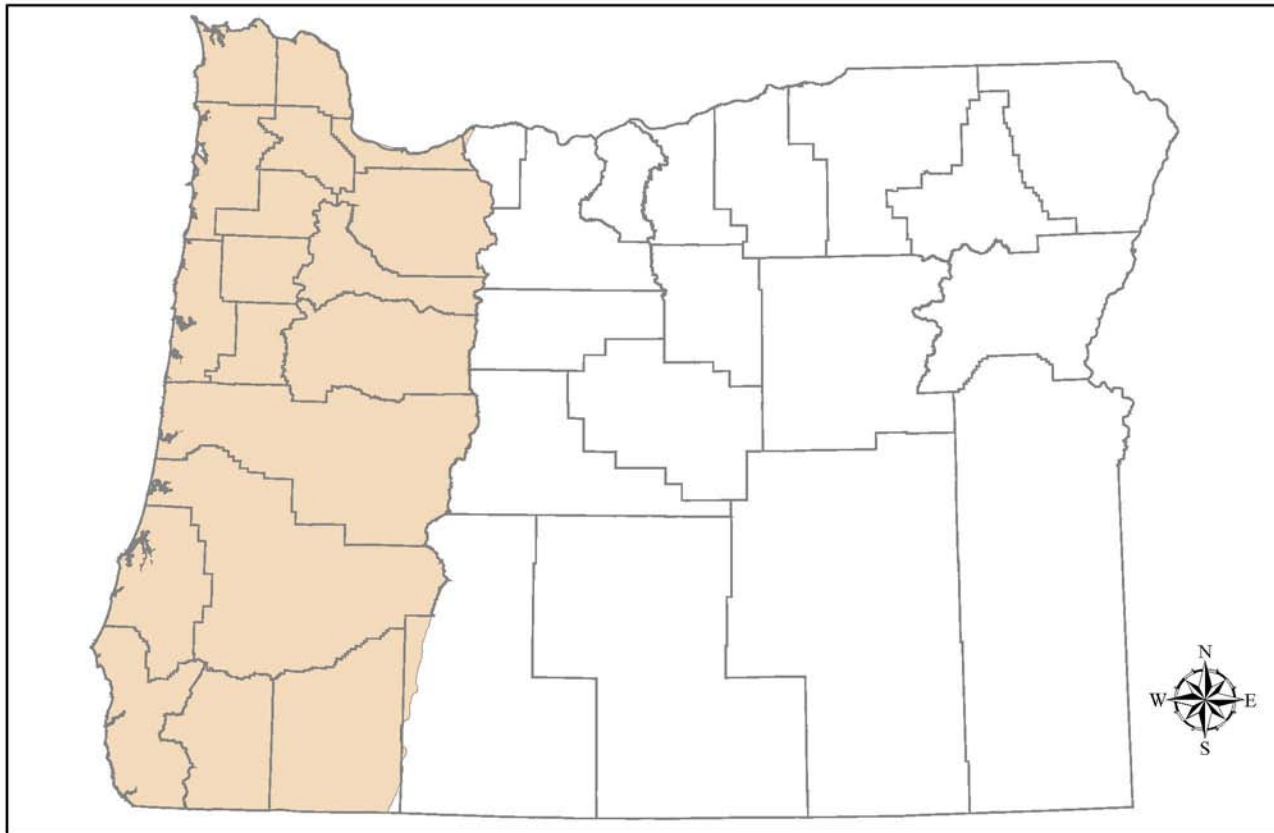


# Map of aboriginal lands

Aboriginal Lands in Oregon



Data was collected from the Oregon Geospatial Data Clearinghouse. Map is displayed on Oregon Lambert Projection with NAD 1983 datum. Created by Brady Smith on May 2, 2005.



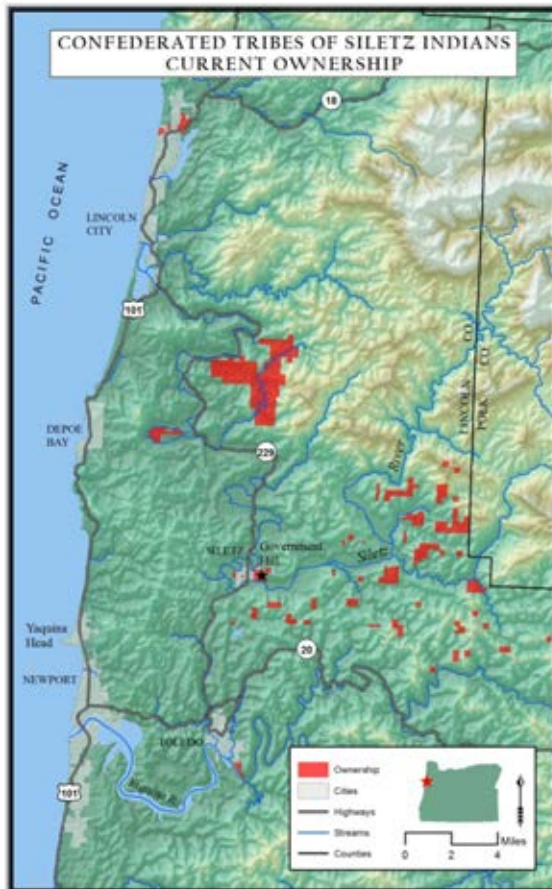


# Ancestral Homelands





# Current reservation and 11 county service area



Confederated Tribes of Siletz Indians  
11 County Service Area



# Tribal History



- Termination in 1954
- Restoration in 1977
  - first in Oregon
  - second in Nation
- Services
  - Housing
  - Education
  - Health Care
  - Employment and Training
  - Social services





# Tribal Goals

- Health and wellness
- Self sufficiency
- Care for, protect, enhance and provide for the wise use of all the Tribe's natural resources in a manner which will ensure that all generations to come will benefit from these resources.



# Community Health Clinic



# Sprung Structure and Fitness Center



# Sustainable and traditional foods





# First Steps Grant

- Hire data coordinator
- Collect, enter, analyze and store
  - Energy efficiency data
  - Renewable energy data
- Provide training for tribal members to learn how to install and maintain solar panels and solar hot water





# While not usually this cold



# ANA SEDS Goals



- Form Siletz Tribal Energy Program (STEP)
- Specialized Training
- Form Partnerships
- Public Education
- Plans and Codes



# STEP Staff





# EECBG Activities

- Education and plan
  - In community
  - At office
- Energy Audits
- Retrofits



# Low Income Weatherization



- Ramp up program and buy supplies
- Specialized training of employees
- Energy Audits
- Retrofits



# Bonneville Power Administration (BPA)



- Specialized training for tribal members
  - Infrared training and purchase of IR camera and other supplies
- Public outreach and education
- CFLs
- Energy Star Appliances



# ANA funded training

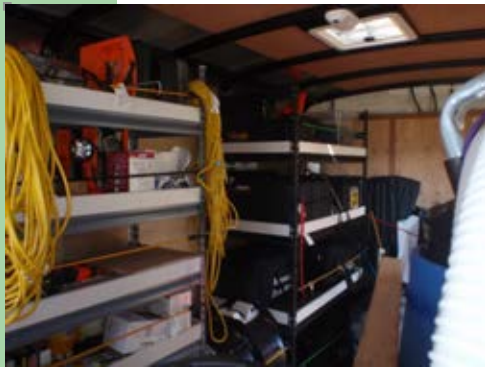


# ANA funded training



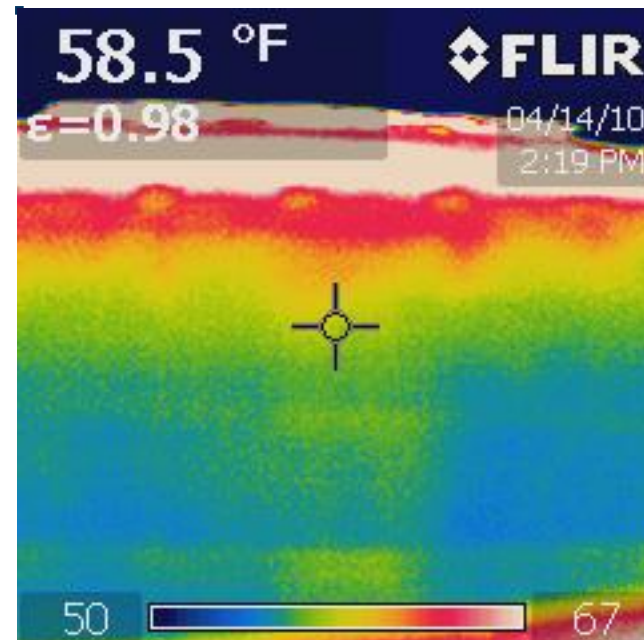
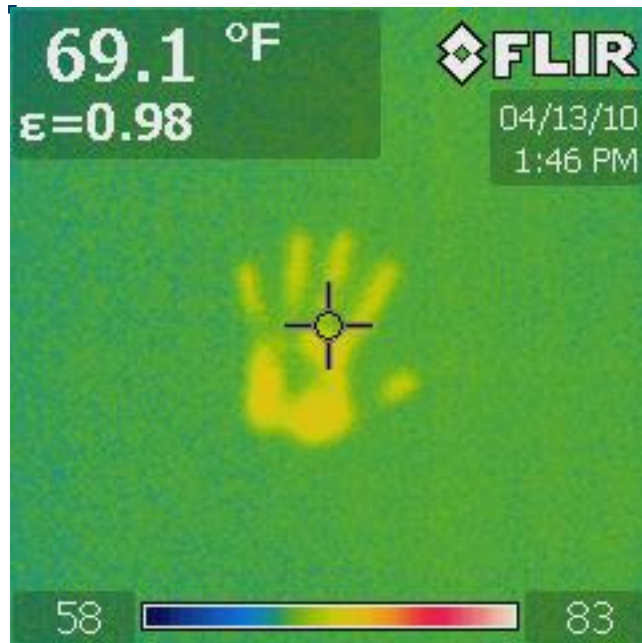


# Weatherization trailer and supplies





# Infrared training





# Energy Audits

- Commercial
  - Sponsored by BPA and local power companies
- Residential
  - Conducted by trained tribal members



# 2012 Retrofits: LED lights in Community Center and Gym





# Solar LED streetlights in Siletz



# Residential Audits





# Residential Retrofit: new furnace and dehumidifier and ductwork



# CFLs



- Thanks to the BPA and local electric companies







# Energy Star Appliances

- Refrigerators
- Washing machines
- Microwaves
- Thanks to the BPA





# Education and supplies

- CO detectors
- Smoke detectors
- Reusables (bags, water bottles)
- Aerators/low flow showerheads
- Fire extinguishers
- Educational material- pamphlets, coloring books, calendars, tip wheels, movies, books about EE, conservation, mold and mildew



# Community Events: Earth Day 2012



# Culture Camp 2012



# Demonstration Garden 2011-12



- Solar fountain(s)
- Reuse of materials
- Rainwater use
- Composting



# Demonstration garden 2012

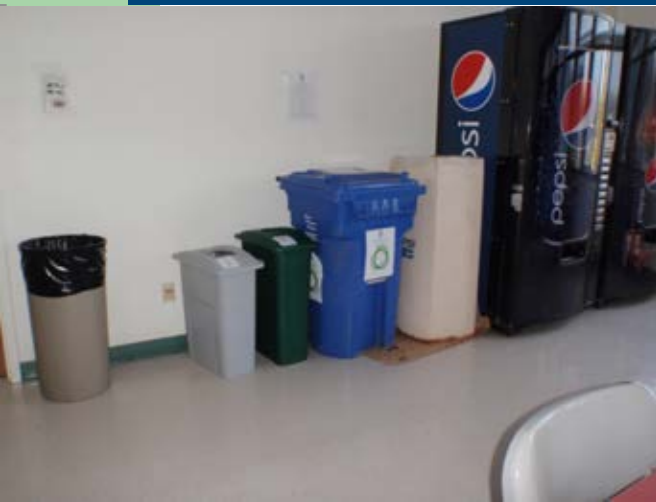


# Demonstration garden 2012





# Recycling at work







# Recycling in the community

- Costume swap
- America Recycles Day
  - Siletz Collection Event



# Composting



# Rain barrels



# EPA Climate Showcase Communities Grant



- Continue education of community and employees
  - 4<sup>th</sup> of July decorating contest with recycled material
  - Calendar contest among youth
  - Small Measure Weatherization workshops
- Solar PVT on roof of Wellness Center
- GHG inventory of community



# 4<sup>th</sup> of July Decorating Contest





# Calendar contest



# Education at 2012 Parade and Pow Wow





# Small Measure Weatherization Workshops



- Modeled after the Community Energy Project in Portland, Oregon
- Simple measures people can take themselves
- Added CFLs, smoke and CO detectors, fire extinguishers, faucet aerators, low flow showerheads to options





**Rope Caulk**



**Caulk Gun**

**Siliconized Caulk**



**Foam Gaskets**



**Pully Seals**



**Reusable Plastic Storm Window Kits**



**Oversize Custom Kits**

# Small Measure Weatherization Workshops



- Portland
- Salem
- Eugene
- Siletz
  
- Combine with other events.





# Solar hot water on Gwee Shut



# Solar on Fitness Center- Planned





# First Steps Grant- recap

- Hire data coordinator
- Collect, enter, analyze and store
  - Energy efficiency data
  - Renewable energy data
- Provide training for tribal members to learn how to install and maintain solar panels and solar hot water





# Project update

- Data personnel hired
- Data from all grants has been collected but not completely entered or analyzed
- Supported entry of data in Portfolio Manager
- Supported development of internal database in MS Access and data entry

# Project benefits and activities to come



- Accurate data will indicate progress towards goals, indicate current and future utility loads and help guide future decisions
- Formal training in renewable energy installation will continue to build capacity in tribe and tribal members





# Lessons learned

- Personnel turnover slows progress
- Data software not always cheap or easy
- Change in training venue may be possible



# Next steps

- No cost extension
- More data entered and analyzed
- Training may be on site in Siletz
- Continue with original goals of all remaining grants

# Thanks to the DOE for continued funding



Siletz Tribal Energy Program  
Claire Wood, Project Coordinator  
800-922-1399 x1276

Fawn Metcalf, Energy Analyst  
Marleen Wynn, Weatherization Coordinator  
[step@ctsi.nsn.us](mailto:step@ctsi.nsn.us)