

State of Minnesota ENERGY SECTOR RISK PROFILE

This State Energy Risk Profile examines the relative magnitude of the risks that the State of Minnesota’s energy infrastructure routinely encounters in comparison with the probable impacts. Natural and man-made hazards with the potential to cause disruption of the energy infrastructure are identified.

The Risk Profile highlights risk considerations relating to the electric, petroleum and natural gas infrastructures to become more aware of risks to these energy systems and assets.

MINNESOTA STATE FACTS

State Overview

Population: 5.42 million (2% total U.S.)
Housing Units: 2.37 million (2% total U.S.)
Business Establishments: 0.15 million (2% total U.S.)

Annual Energy Consumption

Electric Power: 68.0 TWh (2% total U.S.)
Coal: 13,400 MSTN (2% total U.S.)
Natural Gas: 409 Bcf (2% total U.S.)
Motor Gasoline: 53,900 Mbarrels (2% total U.S.)
Distillate Fuel: 28,300 Mbarrels (2% total U.S.)

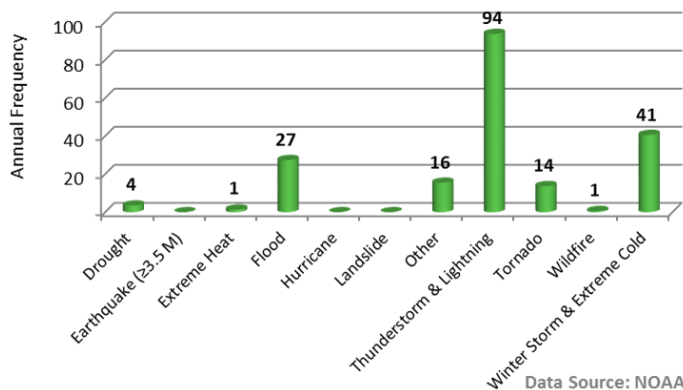
Annual Energy Production

Electric Power Generation: 52.2 TWh (1% total U.S.)
Coal: 22.7 TWh, 44% [5.3 GW total capacity]
Petroleum: 0 TWh, <1% [0.9 GW total capacity]
Natural Gas: 7.1 TWh, 14% [5.9 GW total capacity]
Nuclear: 11.9 TWh, 23% [1.9 GW total capacity]
Hydro: 0.6 TWh, 1% [0.2 GW total capacity]
Other Renewable: 7.6 TWh, 15% [3.1 GW total capacity]

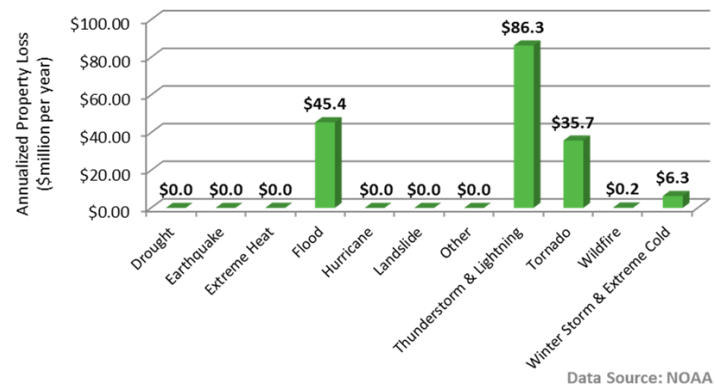
Coal: 0 MSTN (0% total U.S.)
Natural Gas: 0 Bcf (0% total U.S.)
Crude Oil: 0 Mbarrels (0% total U.S.)
Ethanol: 25,200 Mbarrels (8% total U.S.)

NATURAL HAZARDS OVERVIEW

Annual Frequency of Occurrence of Natural Hazards in Minnesota (1996–2014)



Annualized Property Loss due to Natural Hazards in Minnesota (1996–2014)



- According to NOAA, the most common natural hazard in Minnesota is Thunderstorm & Lightning, which occurs once every 3.9 days on the average during the months of March to October.
- The second-most common natural hazard in Minnesota is Winter Storm & Extreme Cold, which occurs once every 9 days on the average during the months of October to March.

- As reported by NOAA, the natural hazard in Minnesota that caused the greatest overall property loss during 1996 to 2014 is Thunderstorm & Lightning at \$86.3 million per year.
- The natural hazard with the second-highest property loss in Minnesota is Flood at \$45.4 million per year.

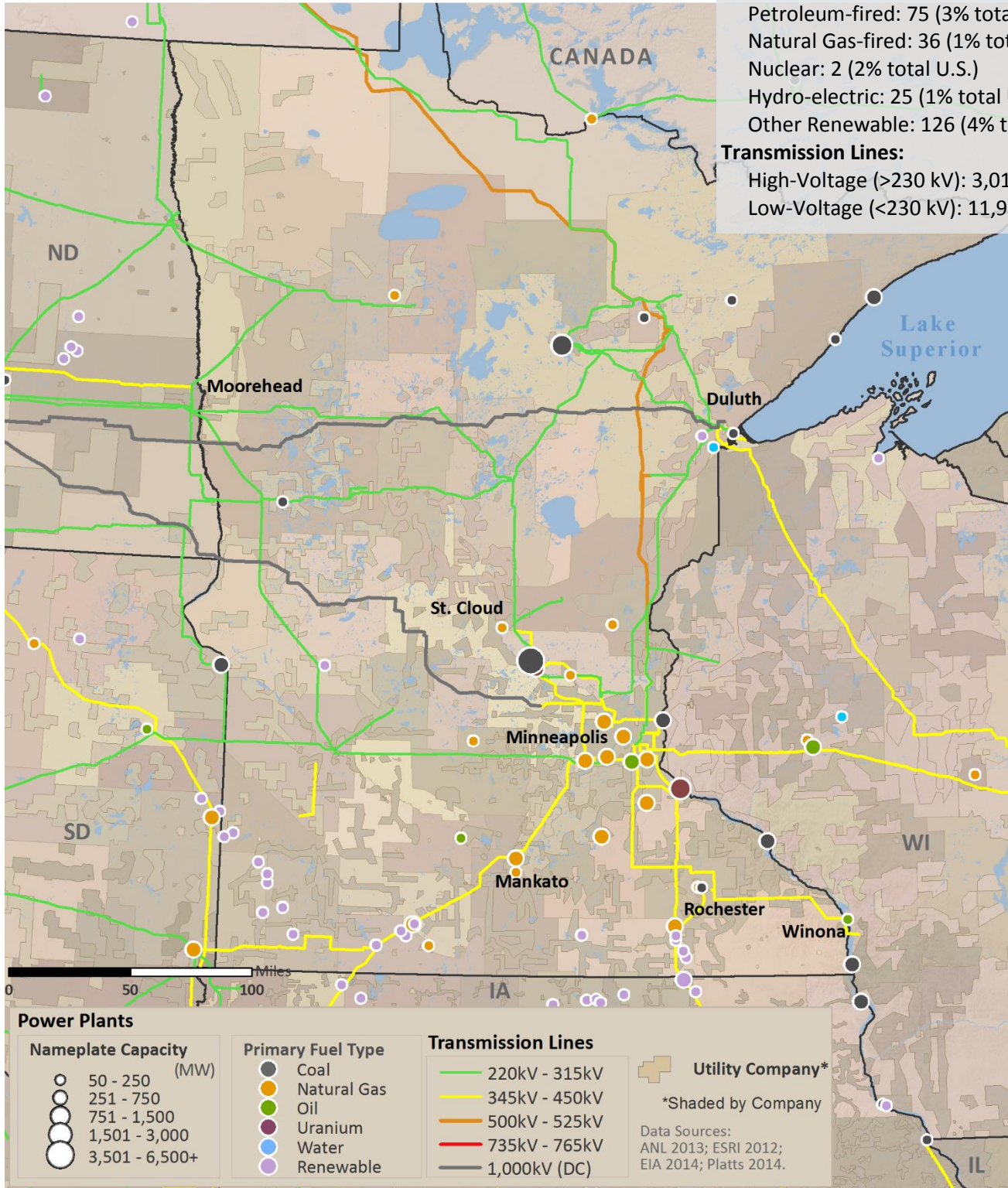
ELECTRIC

Electric Power Plants: 282 (2% total U.S.)

- Coal-fired: 18 (2% total U.S.)
- Petroleum-fired: 75 (3% total U.S.)
- Natural Gas-fired: 36 (1% total U.S.)
- Nuclear: 2 (2% total U.S.)
- Hydro-electric: 25 (1% total U.S.)
- Other Renewable: 126 (4% total U.S.)

Transmission Lines:

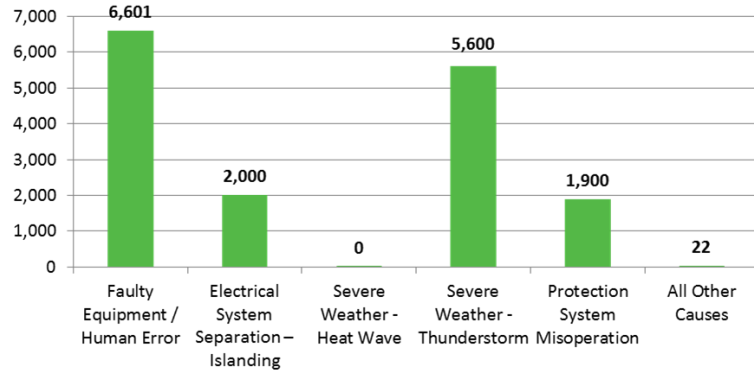
- High-Voltage (>230 kV): 3,019 Miles
- Low-Voltage (<230 kV): 11,945 Miles



Electric Transmission

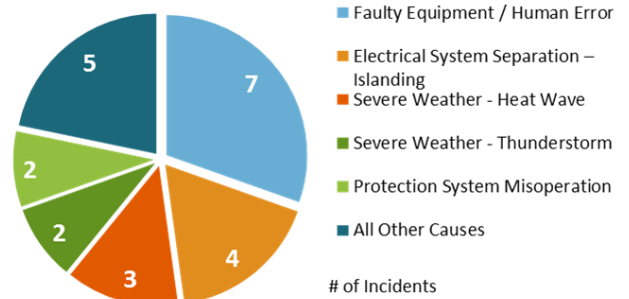
- › According to NERC, the leading cause of electric transmission outages in Minnesota is **Faulty Equipment/Human Error**.
- › Minnesota experienced **23 electric transmission outages** from 1992 to 2009, affecting a total of **16,123** electric customers.
- › **Faulty Equipment/Human Error** affected the largest number of electric customers as a result of electric transmission outages.

Electric Customers Disrupted by NERC-Reported Electric Transmission Outages by Cause (1992–2009)



Data Source: NERC

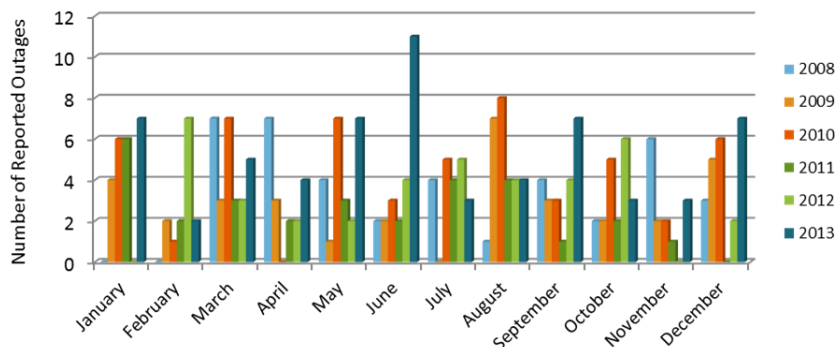
Number of NERC-Reported Electric Transmission Outages by Cause (1992–2009)



Data Source: NERC

Electric Distribution

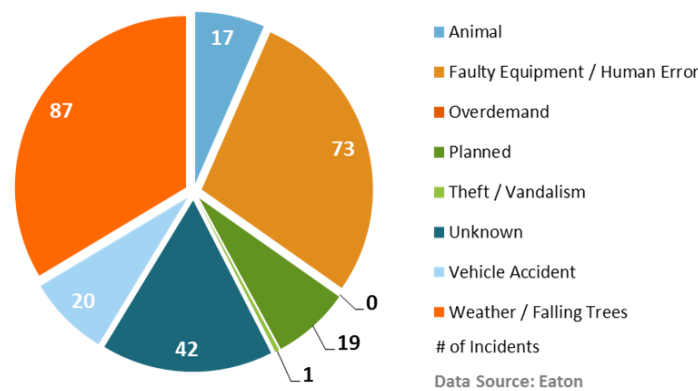
Electric-Utility Reported Power Outages by Month (2008–2013)



Data Source: Eaton

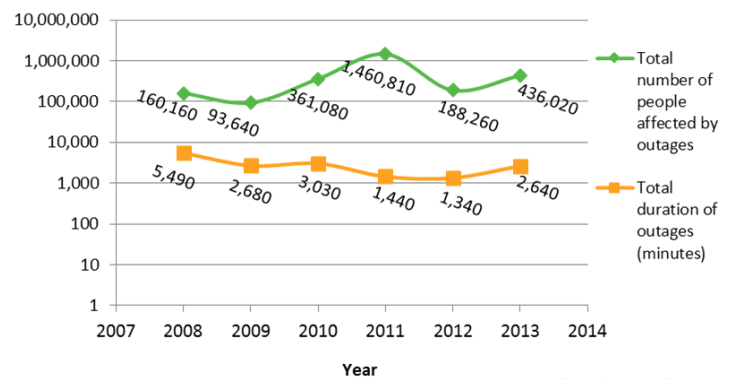
- › Between 2008 and 2013, the greatest number of electric outages in Minnesota has occurred during the month of **March**.
- › The leading cause of electric outages in Minnesota during 2008 to 2013 was **Weather/Falling Trees**.
- › On average, the number of people affected annually by electric outages during 2008 to 2013 in Minnesota was **449,995**.
- › The average duration of electric outages in Minnesota during 2008 to 2013 was **2,770 minutes or 46.2 hours a year**.

Causes of Electric-Utility Reported Outages (2008–2013)



Data Source: Eaton

Utility Outage Data (2008–2013)



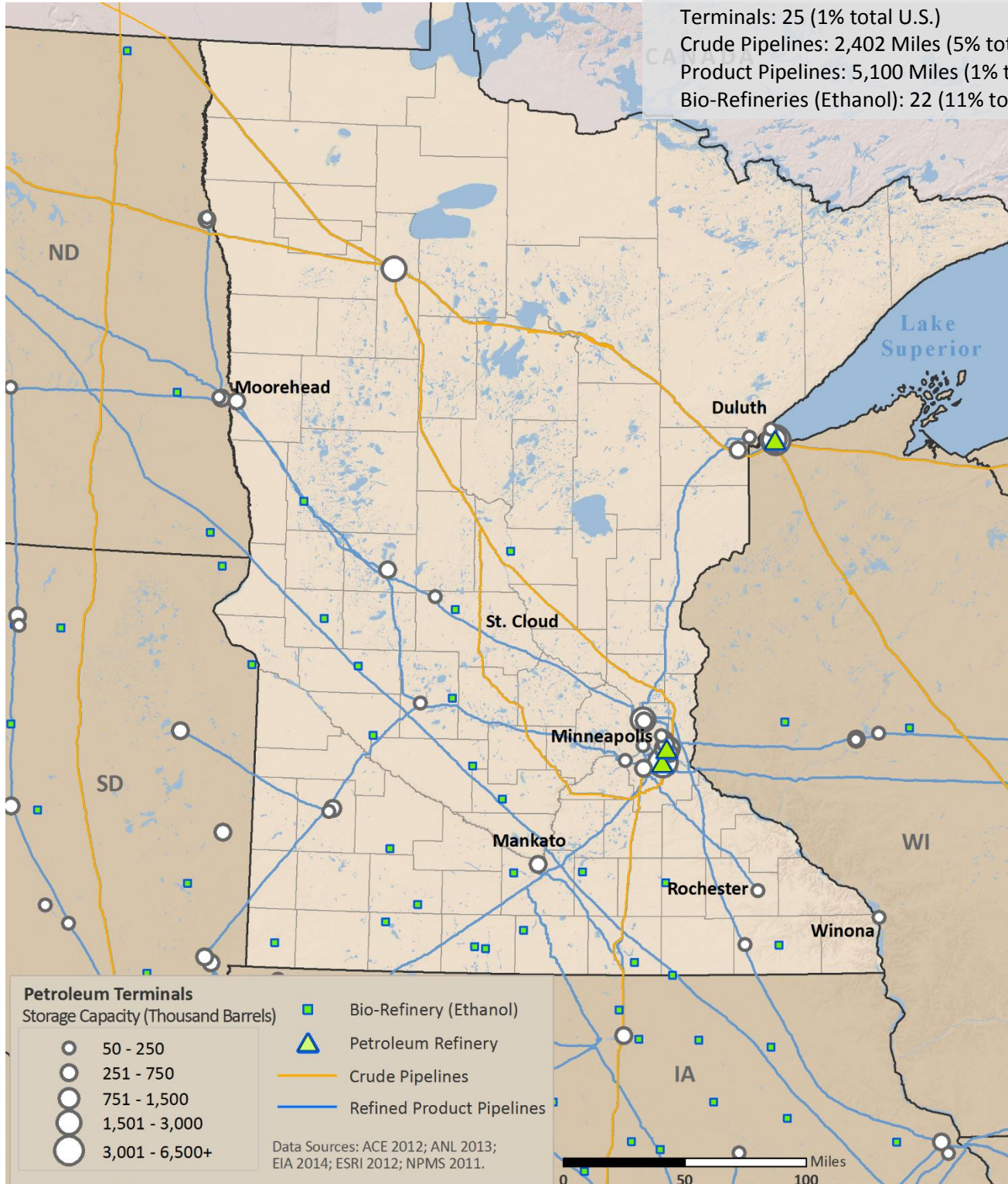
Data Source: Eaton

› NOTE: # of Incidents – The number within each pie slice is the number of event incidents attributable to each cause.

PETROLEUM

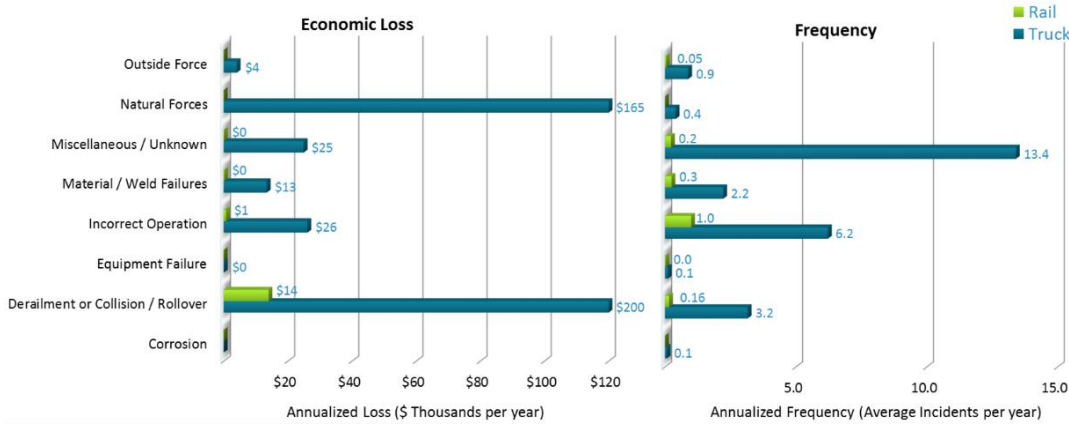
Petroleum Infrastructure Overview

Refineries: 2 (1% total U.S.)
 Terminals: 25 (1% total U.S.)
 Crude Pipelines: 2,402 Miles (5% total U.S.)
 Product Pipelines: 5,100 Miles (1% total U.S.)
 Bio-Refineries (Ethanol): 22 (11% total U.S.)



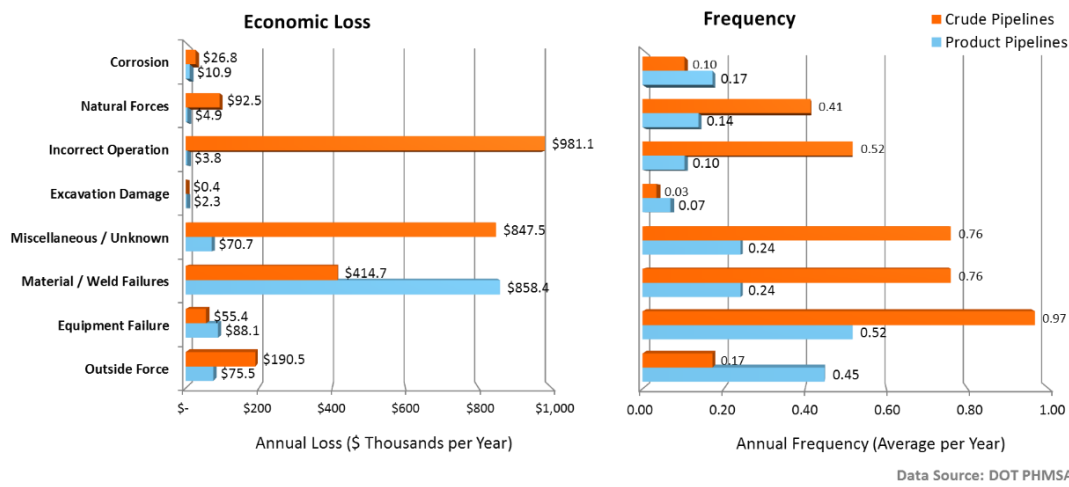
Petroleum Transport

Top Events Affecting Petroleum Transport by Truck and Rail (1986–2014)



The leading event type affecting the **transport of petroleum product by rail and truck** in Minnesota during 1986 to 2014 was **Incorrect Operation** for rail transport and **Miscellaneous/Unknown** for truck transport, with an average **1.0 and 13.4 incidents** per year, respectively.

Top Events Affecting Crude Oil and Refined Product Pipelines in Minnesota (1986–2014)

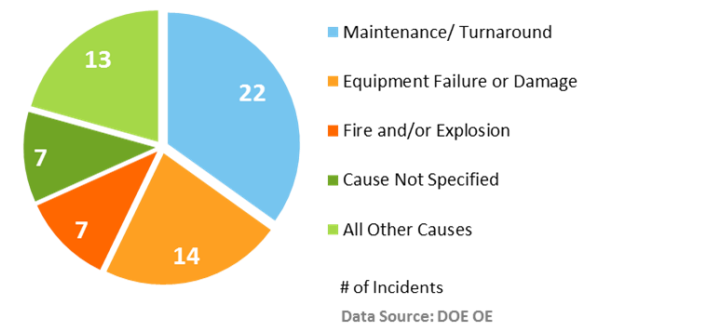


The leading event type affecting **crude oil pipeline and petroleum product pipelines** in Minnesota during 1986 to 2014 was **Equipment Failure** for crude oil pipelines and **Equipment Failure** for product pipelines, with an average **0.97 and 0.52 incidents** per year (or one incident every 1 and 1.9 years), respectively.

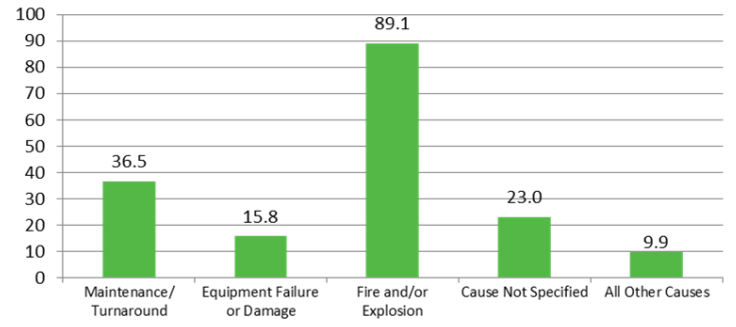
Petroleum Refinery

The leading cause of petroleum refinery disruptions in Minnesota from 2003 to 2014 was **Maintenance/Turnaround**. Minnesota's petroleum refineries experienced **63 major incidents** from 2003 to 2014. The average production impact from disruptions of Minnesota's refineries from 2003 to 2014 is **30.8 thousand barrels per day**.

Top-Five Causes of Petroleum Refinery Disruptions in Minnesota (2003–2014)

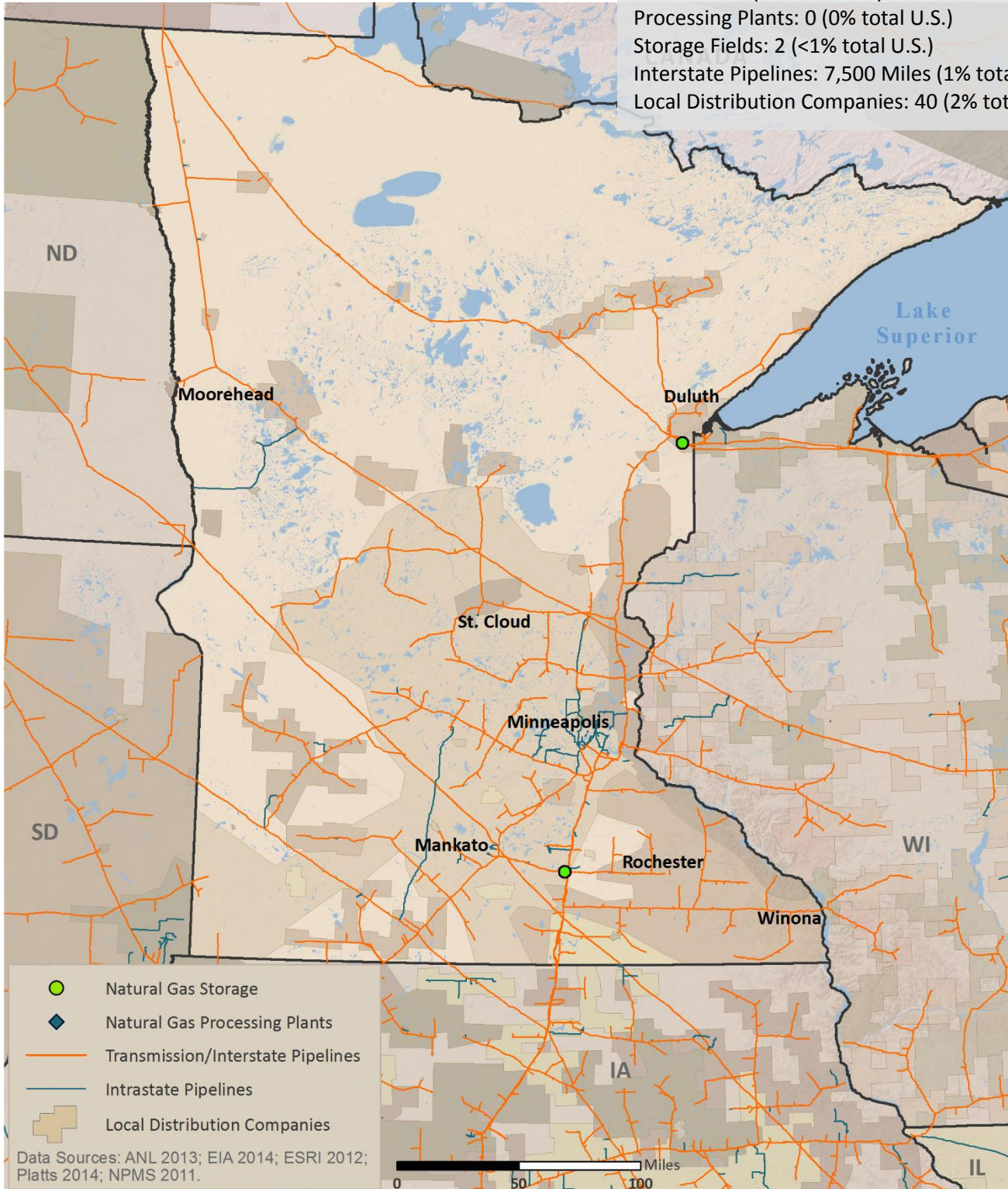


Average Production Impact (thousand barrels per day) from Petroleum Refinery Outages in Minnesota (2003–2014)



NATURAL GAS

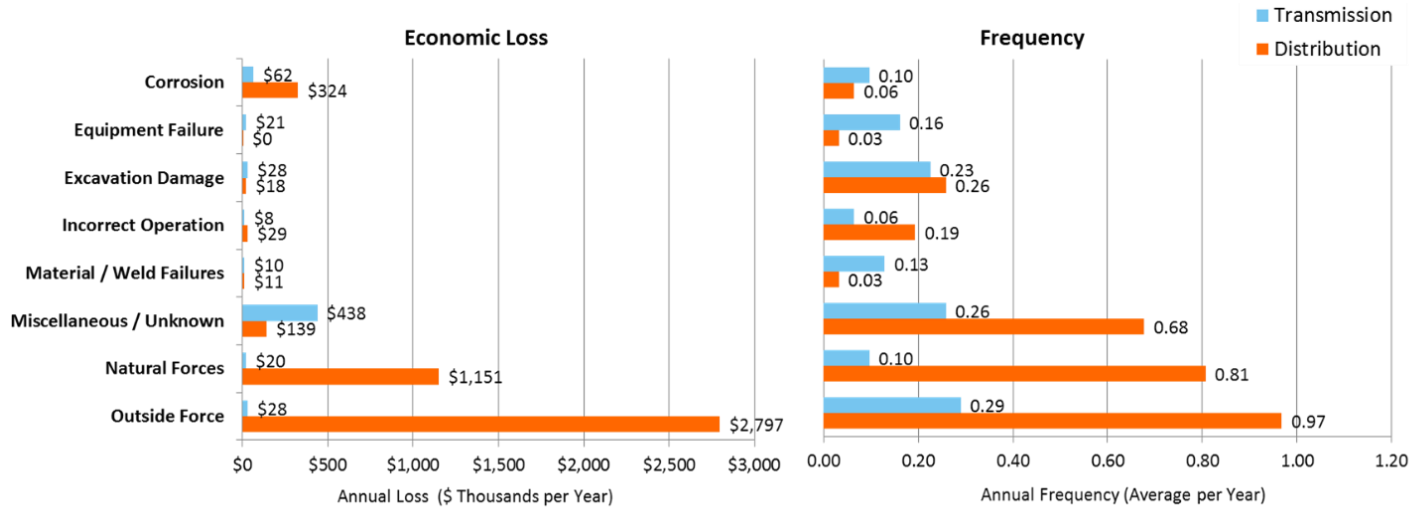
Natural Gas Infrastructure Overview
Gas Wells: 0 (0% total U.S.)
Processing Plants: 0 (0% total U.S.)
Storage Fields: 2 (<1% total U.S.)
Interstate Pipelines: 7,500 Miles (1% total U.S.)
Local Distribution Companies: 40 (2% total U.S.)



Natural Gas Transport

› The leading event type affecting natural gas transmission and distribution pipelines in Minnesota during 1986 to 2014 was **Outside Force** for Transmission Pipelines and **Outside Force** for Distribution Pipelines, with an average **0.29 and 0.97 incidents** per year (or one incident every 3.4 and 1 years), respectively.

Top Events Affecting Natural Gas Transmission and Distribution in Minnesota (1986–2014)



Data Source: DOT PHMSA



DATA SOURCES

Overview Information

- › NOAA (2014) Storms Events Database [www.ncdc.noaa.gov/data-access/severe-weather]
- › Census Bureau (2012) State and County QuickFacts [http://quickfacts.census.gov/qfd/download_data.html]

Production Numbers

- › EIA (2012) Table P1 Energy Production Estimates in Physical Units [http://www.eia.gov/state/seds/sep_prod/pdf/P1.pdf]
- › EIA (2013) Natural Gas Gross Withdrawals and Production [http://www.eia.gov/dnav/ng/ng_prod_sum_a_EPG0_VGM_mmcfc_a.htm]
- › EIA (2012) Electric Power Annual, Table 3.6. Net Generation by State, by Sector, 2012 and 2011 (Thousand Megawatt hours) [<http://www.eia.gov/electricity/annual/pdf/epa.pdf>]
- › EIA (2012) Electric Power Annual, Existing Nameplate and Net Summer Capacity by Energy Source, Producer Type and State (EIA-860) [<http://www.eia.gov/electricity/data/state/>]

Consumption Numbers

- › EIA (2012) Electric Power Annual, Fossil Fuel Consumption for Electricity Generation by Year, Industry Type and State (EIA-906, EIA-920, and EIA-923) [<http://www.eia.gov/electricity/data/state/>]
- › EIA (2013) Prime Supplier Sales Volumes [http://www.eia.gov/dnav/pet/pet_cons_prim_dcu_nus_m.htm]
- › EIA (2012) Adjusted Sales of Fuel Oil and Kerosene [<http://www.eia.gov/petroleum/data.cfm#consumption>]
- › EIA (2012) Annual Coal Consumption [<http://www.eia.gov/coal/data.cfm>]

Electricity

- › EIA (2013) Form-860 Power Plants [<http://www.eia.gov/electricity/data/eia860/>]
- › Platts (2014 Q2) Transmission Lines (Miles by Voltage Level)
- › Platts (2014 Q2) Power Plants (Production and Capacity by Type)

Petroleum

- › Argonne National Laboratory (2012) Petroleum Terminal Database
- › Argonne National Laboratory (2014) Ethanol Plants
- › EIA (2013) Petroleum Refinery Capacity Report [<http://www.eia.gov/petroleum/refinerycapacity/>]
- › NPMS (2011) Petroleum Product Pipeline (Miles of Interstate Pipeline)
- › NPMS (2011) Crude Pipeline (Miles of Interstate Pipeline)

Natural Gas

- › EIA (2013) Form-767 Natural Gas Processing Plants [http://www.eia.gov/cfapps/ngqs/ngqs.cfm?f_report=RP9]
- › EIA (2013) Number of Producing Gas Wells [http://www.eia.gov/dnav/ng/ng_prod_wells_s1_a.htm]
- › NPMS (2011) Natural Gas Pipeline (Miles of Interstate Pipeline)
- › Platts (2014 Q2) Local Distribution Companies (LDCs)

Event Related

- › DOE OE (2014) Form 417 Electric Disturbance Events [http://www.oe.netl.doe.gov/OE417_annual_summary.aspx]
 - › DOE OE (2014) Energy Assurance Daily (EAD) [<http://www.oe.netl.doe.gov/ead.aspx>]
 - › Eaton (2014) Blackout and Power Outage Tracker [http://powerquality.eaton.com/blackouttracker/default.asp?id=&key=&Quest_user_id=&leadg_Q_QRequired=&site=&menu=&cx=3&x=16&y=11]
 - › DOT PHMSA (2013) Hazardous Material Incident System (HMIS) [<https://hazmatonline.phmsa.dot.gov/IncidentReportsSearch/search.aspx>]
 - › NERC (2009) Disturbance Analysis Working Group [<http://www.nerc.com/pa/rmm/ea/Pages/EA-Program.aspx>]*
- *The NERC disturbance reports are not published after 2009.

Notes

- › Natural Hazard, Other, includes extreme weather events such as astronomical low tide, dense smoke, frost/freeze, and rip currents.
- › Each incident type is an assembly of similar causes reported in the data source. Explanations for the indescribable incident types are below.
 - › Outside Force refers to pipeline failures due to vehicular accident, sabotage, or vandalism.
 - › Natural Forces refers to damage that occurs as a result of naturally occurring events (e.g., earth movements, flooding, high winds, etc.)
 - › Miscellaneous/Unknown includes releases or failures resulting from any other cause not listed or of an unknowable nature.
 - › Overdemand refers to outages that occur when the demand for electricity is greater than the supply, causing forced curtailment.
- › Number (#) of Incidents – The number within each pie chart piece is the number of outages attributable to each cause.

Bcf – Billion Cubic Feet

GW – Gigawatt

kV – Kilovolt

Mbarrels – Thousand Barrels

Mbpd – Thousand Barrels per Day

MMcfd – Million Cubic Feet per Day

MSTN – Thousand Short Tons

TWh – Terawatt hours

FOR MORE INFORMATION CONTACT:

Alice Lippert

Senior Technical Advisor

Office of Electricity Delivery and Energy Reliability

U.S. Department of Energy

email: energyanalysis@hq.doe.gov