

## Plainsandeastern

---

**From:** J D Dyer <arkjddyer@yahoo.com>  
**Sent:** Wednesday, June 03, 2015 8:23 PM  
**To:** Plainsandeastern  
**Subject:** PECL 1222 comment

Comment on the 1222 application for the proposed Plains and Eastern HVDC transmission line:

My comment relates to the economics of the proposed transmission line, specifically the litigation costs. In this comment, I will not delve into the legal arguments to be made. I simply want to impress upon the DOE the absolute certainty that the DOE will face numerous lawsuits. The conduct of the DOE and Clean Line Energy has made this inevitable.

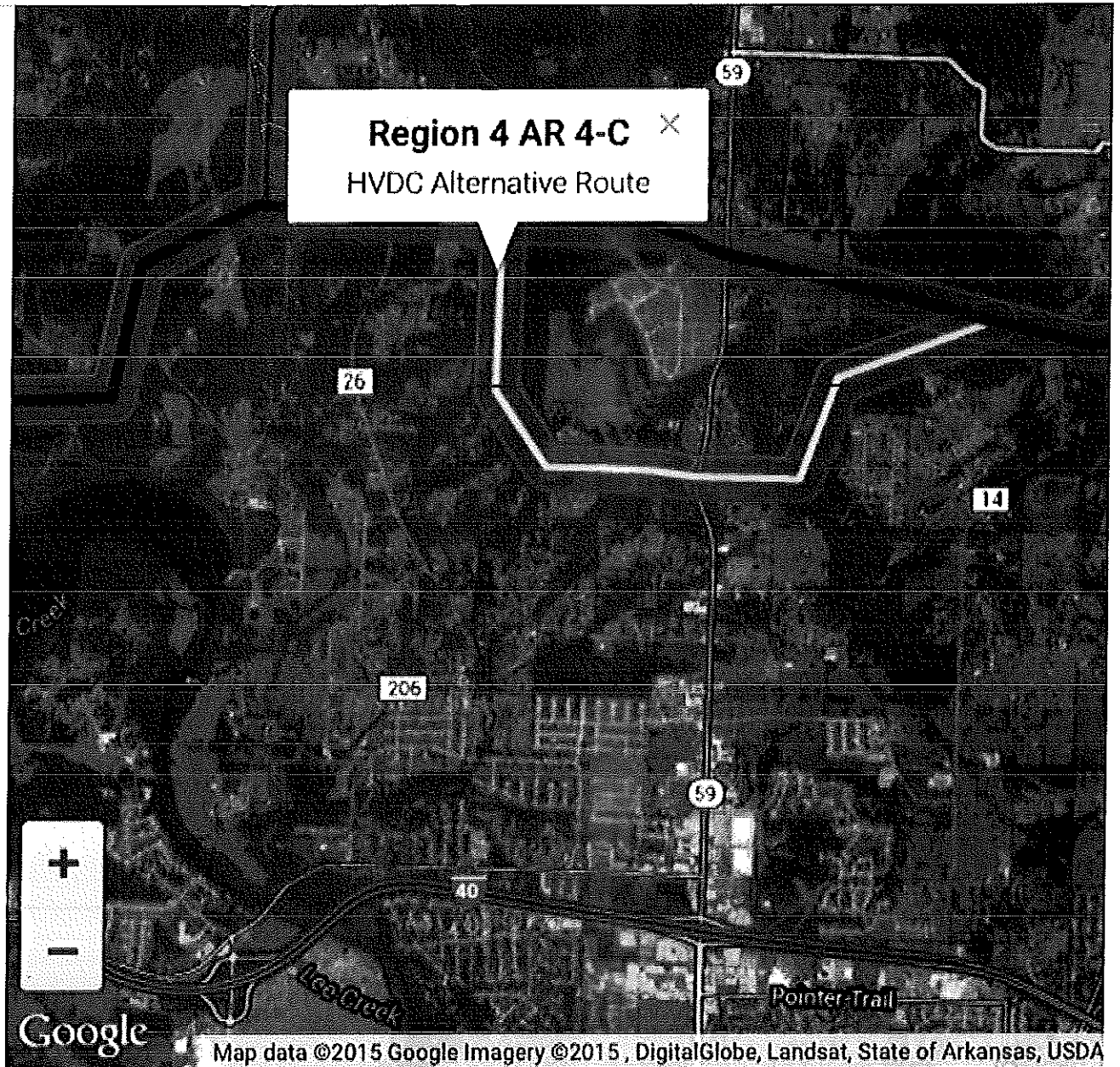
Fairness is a highly subjective concept, but the perception of unfairness seems to be universally recognized. There are many instances of perceived unfairness in the route selection process for the transmission line. This perceived unfairness is only one of many reasons numerous lawsuits are inevitable.

One of the most egregious instances of unfairness in the route selection that I am aware of is the alternate route AR 4-C. This alternate route makes a detour around an exclusive real estate development known as the Scott Farm, north of Van Buren. The specious rationalization for this detour is "Proposed Alternative 4-C is a short route that parallels parcel lines to the extent practicable". The same rationale could be used to zigzag the transmission line from western Oklahoma to eastern Tennessee. I have included, at the end of my comment, a couple of screen shots of the detour. The "preferred" route passes along the north side of the Scott Farm development, but is never any closer than 1000' to any of the existing McMansion homes. Unfortunately, the alternate route AR 4-C passes very close to several less expensive homes.

The obvious reason for the AR 4-C alternate route is to avoid expensive homes, and place the burden upon less affluent homeowners. Hence, the perceived unfairness. If the final draft of the Plains and Eastern EIS were to recommend the use of alternative route AR 4-C, it would undermine the justification of the entire transmission line. How could the DOE expect any homeowner to quietly accept property devaluation, health concerns, and loss of quality of life when the same is not expected of more affluent homeowners?

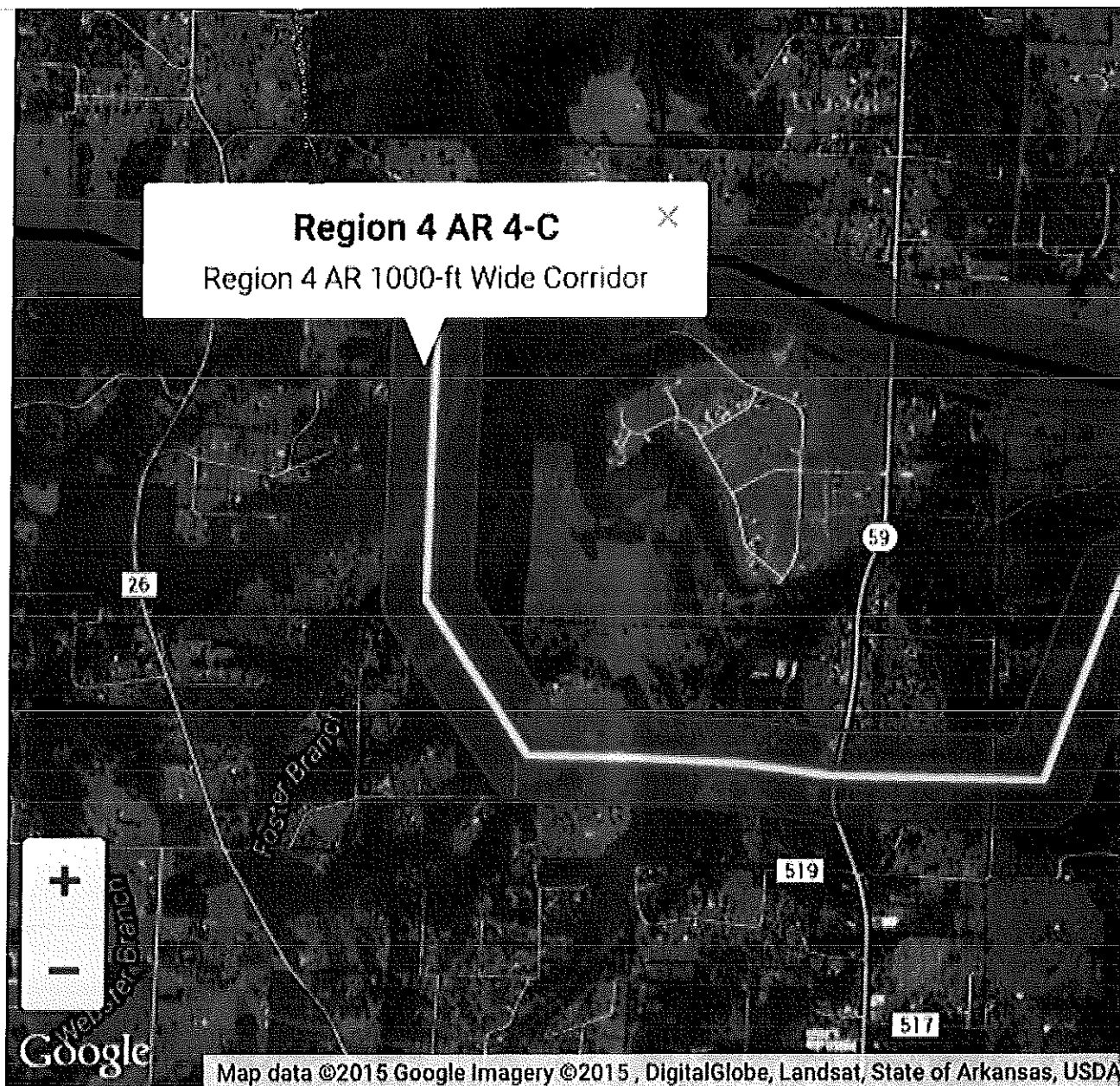
The perceived unfairness of the route selection has contributed to the public's hatred of this project. The Plains and Eastern project should become a textbook example of mismanagement of the development of a transmission line.

Joel Dyer



**NOTES:**

Some of the descriptors of the symbology provided in the legend are provided as acronyms or abbreviations in the Table of Contents of the Draft EIS.



**NOTES:**

Some of the descriptors of the symbology provided in the legend are provided as acronyms or abbreviations. Acronyms in the Table of Contents of the Draft EIS.