

Electric Drive and Advanced Battery and Components Testbed (EDAB)

March 5, 2012 through May 17, 2012

Description / Specification

Vehicle

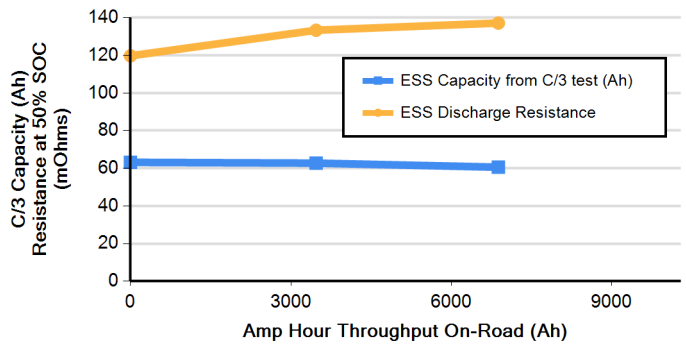
| | |
|----------------|-----------------------------------|
| Configuration | Series PHEV |
| Traction Motor | UQM 145 kW / single-speed gearbox |
| APU | UQM 145 kW / 5.3L gasoline engine |



Battery Pack

| | |
|---------------------|--------------------------------|
| Manufacturer | EnerDel |
| Model | Type I EV Pack (A306) |
| Chemistry | Li-ion |
| Cathode | Mixed Oxide (Modified NMC) |
| Anode | Amorphous Hard Carbon |
| Configuration | 4 parallel strings of 96 cells |
| Rated Capacity (Ah) | 70 |
| Nominal Voltage (V) | 345 |
| Pack mass (kg) | 285 |
| Cooling Type | Passive (sealed enclosure) |

ESS Capacity and Resistance from RPT



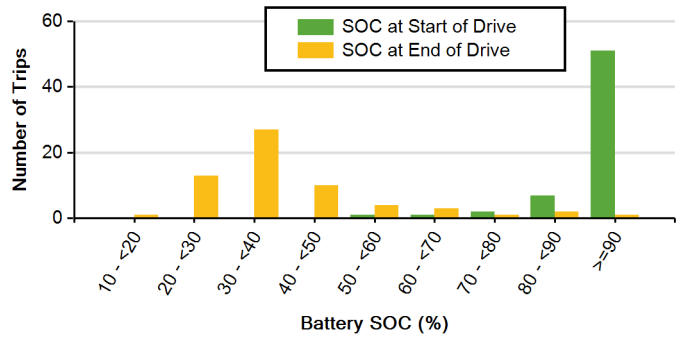
ESS Reference Performance Testing Results

| | |
|--------------------------------------|------|
| Initial Measured Capacity (BOL) (Ah) | 63.2 |
| Present Measured Capacity (Ah) | 60.6 |

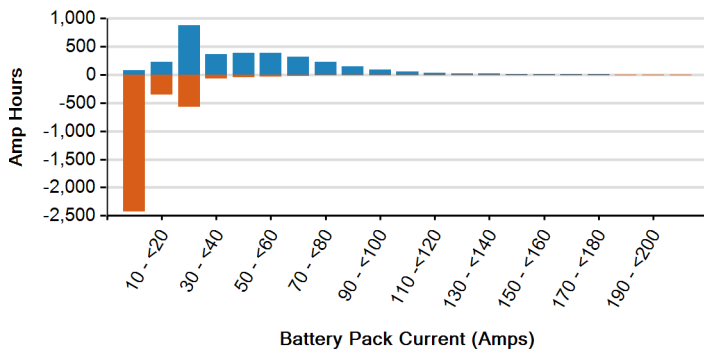
ESS On-road Testing Results

| | |
|------------------------------------|---------|
| Miles driven | 3,679.0 |
| City % of miles | 54% |
| Hwy % of miles | 46% |
| Amp Hours throughput lifetime | 6,881.0 |
| Avg. energy consumption (DC Wh/mi) | 240.3 |

ESS SOC at Start and End of Drives



Lifetime Ah throughput On-road



Lifetime Ah throughput On-road

