



700 Milam Street, Suite 800  
 Houston, Texas 77002  
 phone: 713.375.5000  
 fax: 713.375.6000

**RECEIVED**  
 By via email at DOE/FE 09/29/14

September 29, 2014

The Office of Fossil Energy  
 Natural Gas Regulatory Activities  
 U.S. Department of Energy  
 Attention: Larine Moore, Docket Room Manager  
 Docket Room FE-34  
 P.O. Box 44375  
 Washington, DC 20026-4375

Re: Sabine Pass Liquefaction, LLC  
 DOE Semi-annual Report  
 DOE/FE Order Nos. 2833, 2961, 3384, and 3442  
 FE Docket Nos. 10-85-LNG, 10-111-LNG, 13-121-LNG and 14-31-LNG

Dear Ms. Moore:

Pursuant to the above-referenced Orders, Sabine Pass Liquefaction, LLC ("Sabine Pass"), herein submits documents describing the progress of the Sabine Pass Liquefaction Project ("Project") for March 1, 2014, through August 31, 2014. During this period, Project activities focused on soils improvement, pile driving, pouring of foundations, and erecting structural steel. Please refer to Table 1 below for a summary of activities during this period. Please refer to Attachment A for the Monthly Reports submitted to Federal Energy Regulatory Commission ("FERC") during the reporting period.

<b>Sabine Pass LNG, L.P. and Sabine Pass Liquefaction, LLC Construction Report for Period: March 1, 2014, through August 31, 2014</b>	
<b>Area</b>	<b>Comments</b>
Liquefaction Stage 1 Area – Train 1	<ul style="list-style-type: none"> <li>• Constructing foundations, erected structural steel and installed above ground and underground piping.</li> <li>• Installed molecular sieve dehydrator &amp; mercury removal beds.</li> <li>• Installed the sole plates for the propane and ethylene compressors.</li> <li>• Erected amine surge tank.</li> <li>• Major equipment set.</li> <li>• Installing air coolers.</li> <li>• Installed electrical cable tray.</li> </ul>
Liquefaction Stage 1 Area – Train 2	<ul style="list-style-type: none"> <li>• Constructing foundations, erecting structural steel, installing electrical cable tray and installing above ground and underground piping.</li> <li>• Erection commenced on the amine surge tank.</li> <li>• Commenced work in substation HVAC/ Transformer pads, and hot oil surge drum foundation.</li> <li>• Major equipment set.</li> </ul>
Liquefaction Stage 2 Area – Train 3	<ul style="list-style-type: none"> <li>• Completed soil stabilization and pile driving activities.</li> <li>• Constructing foundations, erecting structural steel, installing electrical cable tray and installing above ground and underground piping.</li> <li>• Constructed the Amine and Hot Oil Sumps.</li> <li>• Commenced the placement of area paving concrete.</li> <li>• Continued the construction of cast in place columns.</li> </ul>

September 29, 2014  
 U.S. Department of Energy  
 Ms. Larine Moore

<b>Sabine Pass LNG, L.P. and Sabine Pass Liquefaction, LLC</b>	
<b>Construction Report for Period: March 1, 2014, through August 31, 2014</b>	
<b>Area</b>	<b>Comments</b>
Liquefaction Stage 2 Area – Trains 4	<ul style="list-style-type: none"> <li>• Conducted soil stabilization and pile driving activities.</li> <li>• Continued construction of base slabs.</li> <li>• Continued fabrication of underground pipe along the propane condenser.</li> </ul>
OSBL	<ul style="list-style-type: none"> <li>• Conducted soil stabilization and pile driving activities.</li> <li>• Constructing pipe racks in the LNG Tank 3 and 5 areas.</li> <li>• Constructing the marine flare and wet/dry flares.</li> <li>• Constructing foundations, erecting structural steel, installing electrical cable tray and installing above ground and underground piping.</li> <li>• Work commenced on the BOG compressors sole plates.</li> <li>• Erection commenced on the RO water storage tank.</li> <li>• Completed erection of the wastewater storage tank.</li> <li>• Sump structural concrete completed.</li> <li>• Setting major equipment.</li> </ul>
Support Buildings	<ul style="list-style-type: none"> <li>• Continued construction of the warehouse.</li> <li>• Completed renovations of the control room.</li> </ul>
Access Roads, Waterline	<ul style="list-style-type: none"> <li>• Water trucks were operated for dust control, as necessary.</li> </ul>
Laydown, Staging Areas	<ul style="list-style-type: none"> <li>• Contractors continue to mobilize personnel and equipment.</li> <li>• Mixing for soil stabilization and began laying rock in the area north of Trains 3 and 4.</li> </ul>
Construction Dock (Ro-Ro)	<ul style="list-style-type: none"> <li>• Maintenance dredging occurred in February.</li> <li>• Received and offload piles and equipment at the construction dock.</li> </ul>
Revamp Area	<ul style="list-style-type: none"> <li>• Completed valve replacements.</li> <li>• Completed modification of motor starters.</li> <li>• Revamp pedestals completed.</li> <li>• Erected structural steel.</li> <li>• Installed electrical cable tray.</li> </ul>

Please call me if you have any questions.

Sincerely,

/s/ *Karri Mahmoud*

Karri Mahmoud  
 Sabine Pass Liquefaction, LLC

Sabine Pass Liquefaction, LLC  
DOE Semi-Annual Report  
DOE/FE Order Nos. 2833, 2961, 3384, and 3442  
FE Docket Nos. 10-85-LNG, 10-111-LNG, 13-121-LNG, and 14-31-LNG

## **Attachment A (part 1)**



Cheniere Energy, Inc.  
700 Milam Street, Suite 800  
Houston, Texas 77002  
phone: 713.375.5000  
fax: 713.375.6000

April 22, 2014

Ms. Kimberly D. Bose, Secretary  
Federal Energy Regulatory Commission  
888 First Street, N.E.  
Washington, D.C. 20426

**Re: Sabine Pass LNG, L.P. and Sabine Pass Liquefaction, LLC  
Monthly Construction Progress Report for Sabine Pass Liquefaction Project  
Docket Nos. CP11-72-000 & CP13-2-000**

Dear Ms. Bose:

On April 16, 2012, the Federal Energy Regulatory Commission ("FERC") issued an Order Granting Authorization under Section 3(a) of the Natural Gas Act ("April 16 Order") in the above-captioned docket. The Order authorizes Sabine Pass LNG, L.P. and Sabine Pass Liquefaction, LLC ("Sabine Pass") to site, construct, and operate the Sabine Pass Liquefaction Project at the Sabine Pass LNG Terminal, located in Cameron Parish, Louisiana. On August 2, 2013, the FERC issued an Order Amending Section 3 Authorization ("August 2 Order") for the Sabine Pass Modification Project.

Pursuant to Condition 7 in Appendix D of the April 16 Order, and Condition 7 of the August 2 Order, Sabine Pass is herein submitting its monthly construction progress report for March 2014.

Should you have any questions about this filing, please feel free to contact the undersigned at (713) 375-5000.

Thank you,

/s/ Karri Mahmoud

Karri Mahmoud  
Sabine Pass LNG, L.P.  
Sabine Pass Liquefaction, LLC

cc: Ms. Senth White, Federal Energy Regulatory Commission  
Ms. Karla Bell, Federal Energy Regulatory Commission  
Ms. Magdalene Suter, Federal Energy Regulatory Commission  
Mr. Stephen Kusy, Federal Energy Regulatory Commission

# **SABINE PASS LIQUEFACTION PROJECT**

**Cameron Parish, Louisiana**

**Monthly Progress Report**

**March 2014**

**Table of Contents**

1.0	Executive Summary.....	3
2.0	Project Highlights .....	3
3.0	Safety & Health Progress .....	4
4.0	Schedule .....	4
5.0	Construction.....	4
6.0	Permitting and Environmental.....	6
7.0	Progress Pictures.....	7

## 1.0 Executive Summary

This report covers activities of the SPL Stage 1 and SPL Stage 2 projects occurring during the month of March 2014. Stage 1 Engineering is 96.0% complete, Procurement is 94.6%, and Subcontract and direct hire Construction work are 37.7% and 21.0% complete, respectively, for the period. Stage 1 overall project completion is 63.3% against the plan of 65.1%.

Stage 2 Engineering is now 55.3% complete, Procurement is 44.6%, and Subcontract and direct hire Construction work are 14.0% and 0.6% complete, respectively. Overall project completion for Stage 2 is 27.1% against the plan of 24.5%.

Actual project progress continues to support the achievement of the scheduled Substantial Completion Dates for Trains 1 and 2, which remain as February 2016 and June 2016, respectively. Trains 3 and 4 Substantial Completion Dates are April 2017 and August 2017.

## 2.0 Project Highlights

In March, Stage 1 Engineering continued with remaining punch list items. For Stage 2, Engineering completed the IFC of foundations for Train 3 ISBL.

The first set of refrigeration compressors arrived at the Port of Houston, and will be delivered to site in early April. The second set of refrigeration compressors are in transit. Additional Stage 1 deliveries included the BOG compressors and the first of the Train 1 cryo-rack air coolers. Procurement continues to support construction activities at the jobsite through delivery of piping and structural steel items.

During the month of March, Subcontracts managed the following major subcontracts for Trains 1 and 2: soil improvement, field erected tanks, onsite concrete batch plant, offsite equipment insulation, permanent telecommunications, and fire/gas detection. Recon completed the soil mixing portion of their work in the northern portion of the site, in March. The control room/water treatment building remodel and NDE subcontracts were awarded. For Trains 3 and 4, Subcontracts managed efforts for pile fabrication and installation, field erected tanks, and busing.

Construction in Train 1 continued work on structural and paving concrete, structural steel erection, installation of underground and aboveground piping, electrical grounding, cable tray and mechanical equipment. Train 2 continued work on structural and paving concrete, structural steel erection, electrical grounding, installation of underground and aboveground pipe and cable tray installation. Construction in the OSBL area continued work on structural and paving concrete, structural steel erection, electrical grounding, installation of underground and aboveground pipe, cable tray installation and mechanical equipment installation. The Revamp area continued work on structural concrete, structural steel erection, underground and aboveground piping, and electrical cable and tray installation. Construction in Train 3 continued with concrete works in area 233N01 and U/G firewater piping installation.

### 3.0 Safety & Health Progress

During the month of March, the project had 56 first aid, 24 near misses, and 3 OSHA recordable cases, and 2 LWDC.

	Near Miss Cases		First Aid		OSHA Cases		LWDC Cases	
	Month	ITD <sup>1,2</sup>	Month	ITD <sup>1,2</sup>	Month	ITD <sup>1,2</sup>	Month	ITD <sup>1</sup>
Bechtel	22	129	56	323	3	12	2	2
Subcontractors	2	28	0	21	0	5	0	0
<b>Total</b>	<b>24</b>	<b>157</b>	<b>56</b>	<b>344</b>	<b>3</b>	<b>17</b>	<b>2</b>	<b>2</b>

<sup>1</sup> ITD = Project totals reflect inception to date and are combined for Stage 1 & 2.

<sup>2</sup> Corrected ITD number to account for Stage 2 cases not reported in February: 1 Near Miss – Bechtel; 1 first Aid – Subcontractor; 1 OSHA case – Bechtel.

### 4.0 Schedule

Overall, Train 1 & 2 project progress is 63.3% complete against a plan of 65.1%. Overall Train 3 & 4 project progress is 27.1 % complete against a plan of 24.5 %.

### 5.0 Construction

Area	Comments	Planned Work for Next Reporting Period
Liquefaction Stage 1 Area – Train 1	<ul style="list-style-type: none"> <li>Continued constructing foundations, erecting structural steel and installing above ground and underground piping.</li> <li>Continued installing mechanical equipment.</li> <li>Continued installing electrical cable tray in the propane condenser rack.</li> <li>Completed erection of the amine surge tank.</li> <li>Molecular sieve dehydrator &amp; mercury removal beds were set.</li> <li>Installation continued on the sole plates for the propane and ethylene compressors.</li> <li>Installation continued on sole plates for the methane compressors.</li> <li>Erection of the amine surge tank completed.</li> </ul>	<ul style="list-style-type: none"> <li>Continue activities to support Train 1 construction.</li> </ul>
Liquefaction Stage 1 Area – Train 2	<ul style="list-style-type: none"> <li>Continued constructing foundations, erecting structural steel and installing above ground and underground piping.</li> <li>Installing mechanical equipment</li> <li>Feed gas heater was set.</li> </ul>	<ul style="list-style-type: none"> <li>Continue activities to support Train 2 construction.</li> </ul>



Sabine Pass LNG, L.P. and Sabine Pass Liquefaction, LLC  
March 2014 Monthly Progress Report

Area	Comments	Planned Work for Next Reporting Period
	<ul style="list-style-type: none"> <li>• Debutanizer condenser, debutanizer reflux drum &amp; heavies removal column drum were set.</li> <li>• Erection commenced on the amine surge tank.</li> <li>• Installation of the electrical cable tray continued.</li> </ul>	
Liquefaction Stage 2 Area – Train 3	<ul style="list-style-type: none"> <li>• Placement of the seal slab in the Train 3 propane Area.</li> <li>• Train 3 piles reached substantial completion.</li> <li>• Started placement of structural concrete.</li> <li>• Started excavation for the hot oil sump.</li> <li>• Started underground piping installation in the Train 3 area.</li> <li>• Mud mat placement commenced.</li> </ul>	<ul style="list-style-type: none"> <li>• Continue soil stabilization.</li> <li>• Continue pile driving.</li> <li>• Continue activities to support Train 3 construction.</li> </ul>
Liquefaction Stage 2 Area – Trains 4	<ul style="list-style-type: none"> <li>• Soil Stabilization</li> <li>• Continue pile driving activities.</li> </ul>	<ul style="list-style-type: none"> <li>• Continue soil stabilization.</li> <li>• Continue pile driving.</li> </ul>
OSBL	<ul style="list-style-type: none"> <li>• Constructing pipe racks in the LNG Tank 3 and 5 areas.</li> <li>• Constructing the marine flare.</li> <li>• Continued constructing foundations and erecting structural steel.</li> <li>• Completed sump base with work continuing on the walls.</li> <li>• Installing the electrical cable tray.</li> <li>• Work commenced on the BOG compressors sole plates.</li> <li>• The RO water feed pumps, potable water booster pump and the demin water pumps were set.</li> <li>• Erection commenced on the RO water storage tank.</li> <li>• Completed erection of the wastewater storage tank.</li> <li>• Continue pile driving activities.</li> </ul>	<ul style="list-style-type: none"> <li>• Continue activities to support OSBL construction.</li> </ul>
Support Buildings Area	<ul style="list-style-type: none"> <li>• Continued construction of the warehouse and control room.</li> <li>• Continued constructing pipe racks in the Tank 3 and 5 areas.</li> <li>• Continued constructing the marine flare.</li> </ul>	<ul style="list-style-type: none"> <li>• Continue warehouse and control room work.</li> </ul>
Access Roads, Waterline	<ul style="list-style-type: none"> <li>• Water trucks were operated for dust control, as necessary.</li> </ul>	<ul style="list-style-type: none"> <li>• Dust control will continue.</li> </ul>

Area	Comments	Planned Work for Next Reporting Period
Laydown, Staging Areas	<ul style="list-style-type: none"> <li>Continued mixing for soil stabilization and began laying rock in the area north of Trains 3 and 4.</li> </ul>	<ul style="list-style-type: none"> <li>Contractors will continue to mobilize personnel and equipment.</li> </ul>
Construction Dock (Ro-Ro)	<ul style="list-style-type: none"> <li>Received and offload pile barges at the construction dock.</li> <li>Receiving and offloading heavy equipment at the Ro-Ro.</li> <li>Dredging occurred this period.</li> </ul>	<ul style="list-style-type: none"> <li>Continue to receive pile barges.</li> </ul>
Revamp Area	<ul style="list-style-type: none"> <li>Erected pedestals.</li> <li>Erecting structural steel.</li> <li>Install electrical cable tray.</li> </ul>	<ul style="list-style-type: none"> <li>Continue activities to support revamp.</li> </ul>

## 6.0 Permitting and Environmental

### Summary of Problems, Non-Compliances, and Corrective Actions.

Date	Description
None.	

### Agency Contacts/Inspections

Agency	Name	Date	Location/Activity
FERC	Steven Kusy	03/11/14	Construction Inspection

### Proposed Changes to Schedule or Scope:

- None.

## 7.0 Progress Pictures



*Train 1 installing stairs and platform on water tank.*



*Train 1 scaffolding and pipe installation.*



*Train 1 ethylene turbine & compressor sole plates.*



*Train 1 installing cable tray to Compressor Substation.*



Sabine Pass LNG, L.P. and Sabine Pass Liquefaction, LLC  
March 2014 Monthly Progress Report



*Train 2 installed feed gas heater.*



*Train 2 setting equipment.*



*OSBL grouting BOG compressors sole plates.*



*OSBL installing pipe to BOG Recycle KO Drum.*



Cheniere Energy, Inc.  
700 Milam Street, Suite 800  
Houston, Texas 77002  
phone: 713.375.5000  
fax: 713.375.6000

May 20, 2014

Ms. Kimberly D. Bose, Secretary  
Federal Energy Regulatory Commission  
888 First Street, N.E.  
Washington, D.C. 20426

**Re: Sabine Pass LNG, L.P. and Sabine Pass Liquefaction, LLC  
Monthly Construction Progress Report for Sabine Pass Liquefaction Project  
Docket Nos. CP11-72-000 & CP13-2-000**

Dear Ms. Bose:

On April 16, 2012, the Federal Energy Regulatory Commission ("FERC") issued an Order Granting Authorization under Section 3(a) of the Natural Gas Act ("April 16 Order") in the above-captioned docket. The Order authorizes Sabine Pass LNG, L.P. and Sabine Pass Liquefaction, LLC ("Sabine Pass") to site, construct, and operate the Sabine Pass Liquefaction Project at the Sabine Pass LNG Terminal, located in Cameron Parish, Louisiana. On August 2, 2013, the FERC issued an Order Amending Section 3 Authorization ("August 2 Order") for the Sabine Pass Modification Project.

Pursuant to Condition 7 in Appendix D of the April 16 Order, and Condition 7 of the August 2 Order, Sabine Pass is herein submitting its monthly construction progress report for April 2014.

Should you have any questions about this filing, please feel free to contact the undersigned at (713) 375-5000.

Thank you,

/s/ Karri Mahmoud

Karri Mahmoud  
Sabine Pass LNG, L.P.  
Sabine Pass Liquefaction, LLC

cc: Ms. Senth White, Federal Energy Regulatory Commission  
Ms. Karla Bell, Federal Energy Regulatory Commission  
Ms. Magdalene Suter, Federal Energy Regulatory Commission  
Mr. Stephen Kusy, Federal Energy Regulatory Commission

**SABINE PASS LIQUEFACTION PROJECT**  
**Cameron Parish, Louisiana**

**Monthly Progress Report**  
**April 2014**



Sabine Pass LNG, L.P. and Sabine Pass Liquefaction, LLC  
April 2014 Monthly Progress Report

**Table of Contents**

<b>1.0</b>	<b>Executive Summary .....</b>	<b>3</b>
<b>2.0</b>	<b>Project Highlights .....</b>	<b>3</b>
<b>3.0</b>	<b>Environmental, Safety &amp; Health Progress.....</b>	<b>3</b>
<b>4.0</b>	<b>Schedule.....</b>	<b>4</b>
<b>5.0</b>	<b>Construction.....</b>	<b>4</b>
<b>6.0</b>	<b>Permitting and Environmental .....</b>	<b>5</b>
<b>7.0</b>	<b>Progress Pictures.....</b>	<b>6</b>

## 1.0 Executive Summary

This report covers activities of the SPL Stage 1 and SPL Stage 2 projects occurring during the month of April 2014. Stage 1 Engineering is 97.4% complete, Procurement is 95.5%, and Subcontract and direct hire Construction work are 40.7% and 23.9% complete, respectively, for the period. Stage 1 overall project completion is 65.2% against the plan of 66.6%.

Stage 2 Engineering is now 63.4% complete, Procurement is 47.6%, and Subcontract and direct hire Construction work are 17.3% and 1.3% complete, respectively. Overall project completion for Stage 2 is 29.7% against the plan of 27.2%.

Actual project progress continues to support the achievement of the scheduled Substantial Completion Dates for Trains 1 and 2, which remain as February 2016 and June 2016, respectively. Trains 3 and 4 Substantial Completion Dates are April 2017 and August 2017.

## 2.0 Project Highlights

In April, Stage 1 Engineering continued with remaining punch list items. For Stage 2, Engineering completed 50% model review of the GTG fuel gas heater area. Engineering also completed the IFC of Train 4 concrete.

The first two sets of Train 1 refrigeration compressors arrived at site in April, as did the Train 1 CO<sub>2</sub> absorber, and the first Train 1 cryo rack air coolers. First rebar for Train 4 was delivered. Procurement continues to support construction activities at the jobsite through delivery of piping and structural items.

During April, Subcontracts managed the following major subcontracts for Trains 1 and 2: soil improvement, field erected tanks, onsite concrete batch plant, offsite equipment insulation, permanent telecommunications, fire and gas detection and the erection and supervision of refrigeration compressors. Recon is assisting with maintenance of perimeter and finger roads/access ways leading into the ISBL units. For Trains 3 and 4, Subcontracts managed efforts for pile fabrication and installation, field erected tanks, and busing.

Construction in Train 1 continued working in structural and paving concrete, structural steel erection, installation of underground and aboveground piping, testing of aboveground pipe, installation of electrical grounding, cable tray, cable pulling, lighting and mechanical equipment.

Construction in Train 2 continued working in structural and paving concrete, structural steel erection, electrical grounding, installation of underground and aboveground pipe and cable tray installation. Construction in the OSBL area continued with structural and paving concrete, structural steel erection, electrical grounding, installation of underground and aboveground pipe, cable tray installation and mechanical equipment installation. Structural concrete completed in Revamp area and work continued with structural steel erection, underground and aboveground piping, and electrical cable and tray.

Construction in Train 3 continued working in structural concrete, installation of underground piping, and preparation for structural steel erection. Train 4 continued working in piling, and prepared to start structural concrete. Construction in the OSBL area completed piling, and started structural concrete.

## 3.0 Environmental, Safety & Health Progress

During the month of April, the project had 65 first aid, 22 near misses, and 4 OSHA recordable cases, and 0 LWDC.

Sabine Pass LNG, L.P. and Sabine Pass Liquefaction, LLC  
April 2014 Monthly Progress Report

	Near Miss Cases		First Aid		OSHA Cases		LWDC Cases	
	Month	ITD <sup>1</sup>	Month	ITD <sup>1</sup>	Month	ITD <sup>1</sup>	Month	ITD <sup>1</sup>
Bechtel	21	150	63	386	4	16	0	2
Subcontractors	1	29	2	23	0	5	0	0
<b>Total</b>	<b>22</b>	<b>179</b>	<b>65</b>	<b>409</b>	<b>4</b>	<b>21</b>	<b>0</b>	<b>2</b>

<sup>1</sup> ITD = Project totals reflect inception to date and are combined for Stage 1 & 2.

#### 4.0 Schedule

Overall, Train 1 & 2 project progress is 65.2% complete against a plan of 66.6%. Overall Train 3 & 4 project progress is 29.7% complete against a plan of 27.2%.

#### 5.0 Construction

Area	Comments	Planned Work for Next Reporting Period
Liquefaction Stage 1 Area – Train 1	<ul style="list-style-type: none"> <li>• Completed surge drum foundation.</li> <li>• Continued to erect structural steel.</li> <li>• Continued pipe installation.</li> <li>• Continue installing electrical cable tray.</li> <li>• Continue setting major equipment: C02 absorber, H/ I/ L stage propane suction drums, LS propane-ethylene cond / feed chillers, and heavies removal column.</li> </ul>	<ul style="list-style-type: none"> <li>• Continued to erect structural steel.</li> <li>• Continued pipe installation.</li> <li>• Continue installing electrical cable tray.</li> <li>• Continue setting major equipment.</li> <li>• Continue constructing foundations.</li> </ul>
Liquefaction Stage 1 Area – Train 2	<ul style="list-style-type: none"> <li>• Completed foundations in upper deck pads and pedestals, and substation foundations/ pedestals.</li> <li>• Commenced work in substation HVAC/ Transformer pads, and hot oil surge drum foundation.</li> <li>• Continued to erect structural steel.</li> <li>• Continued pipe installation.</li> <li>• Continue installing electrical cable tray.</li> <li>• Continue setting major equipment: collection tank, thermal oxidizer KO drum, and amine surge tank.</li> </ul>	<ul style="list-style-type: none"> <li>• Continued to erect structural steel.</li> <li>• Continued pipe installation.</li> <li>• Continue installing electrical cable tray.</li> <li>• Continue setting major equipment.</li> <li>• Continue constructing foundations.</li> </ul>
Liquefaction Stage 2 Area – Train 3	<ul style="list-style-type: none"> <li>• Continue soil improvement activities.</li> <li>• Continued construction of foundations, slabs, pedestals and columns.</li> <li>• Continued to install underground pipe.</li> <li>• Continued to erect structural steel.</li> </ul>	<ul style="list-style-type: none"> <li>• Continue soil stabilization.</li> <li>• Continue pile driving.</li> <li>• Continue activities to support construction.</li> </ul>
Liquefaction Stage 2 Area – Trains 4	<ul style="list-style-type: none"> <li>• Continued driving/cutting piles.</li> </ul>	<ul style="list-style-type: none"> <li>• Continue soil stabilization.</li> <li>• Continue pile driving.</li> </ul>

Sabine Pass LNG, L.P. and Sabine Pass Liquefaction, LLC  
April 2014 Monthly Progress Report

Area	Comments	Planned Work for Next Reporting Period
OSBL	<ul style="list-style-type: none"> <li>• Sump structural concrete completed.</li> <li>• Pile caps continued.</li> <li>• Continued paving concrete trenches.</li> <li>• Continued to erect structural steel.</li> <li>• Continued pipe installation.</li> <li>• Began installing electrical cable tray.</li> <li>• Continue setting major equipment: BOG compressors, air and nitrogen receivers, RO water feed pumps, potable water booster pump, and the demin water pumps were set.</li> <li>• Erection continued on the RO water storage tank.</li> <li>• Continued preassembly of the wet/dry flares.</li> <li>• Completed pile driving in all areas.</li> <li>• All accessible tension connectors were installed and piles were cut.</li> <li>• Continued base slab in water treatment area.</li> </ul>	<ul style="list-style-type: none"> <li>• Continue activities to support construction.</li> </ul>
Support Buildings Area	<ul style="list-style-type: none"> <li>• Continued construction of the warehouse and control room.</li> </ul>	<ul style="list-style-type: none"> <li>• Continue warehouse and control room work.</li> </ul>
Access Roads, Waterline	<ul style="list-style-type: none"> <li>• Water trucks were operated for dust control, as necessary.</li> </ul>	<ul style="list-style-type: none"> <li>• Dust control will continue.</li> </ul>
Laydown, Staging Areas	<ul style="list-style-type: none"> <li>• Continued mixing for soil stabilization and began laying rock in the area north of Trains 3 and 4.</li> </ul>	<ul style="list-style-type: none"> <li>• Contractors will continue to mobilize personnel and equipment.</li> </ul>
Construction Dock (Ro-Ro)	<ul style="list-style-type: none"> <li>• Received and offload piles and equipment at the construction dock.</li> </ul>	<ul style="list-style-type: none"> <li>• Continue to receive piles and equipment.</li> </ul>
Revamp Area	<ul style="list-style-type: none"> <li>• Revamp pedestals completed.</li> <li>• Continued to erect structural steel.</li> <li>• Revamp sync bus substation was set.</li> <li>• Control room modification started.</li> <li>• Continued installing electrical cable tray.</li> </ul>	<ul style="list-style-type: none"> <li>• Continue activities to support construction.</li> </ul>

**6.0 Permitting and Environmental  
Summary of Problems, Non-Compliances, and Corrective Actions.**

Date	Description
None.	

**Agency Contacts/Inspections**

Agency	Name	Date	Location/Activity
None.			

**Proposed Changes to Schedule or Scope:**

- None.

## 7.0 Progress Pictures



*Train 1 lean solvent charge pumps set in place*



*Train 1 setting LS propane-ethylene cond/feed chiller*

Sabine Pass LNG, L.P. and Sabine Pass Liquefaction, LLC  
April 2014 Monthly Progress Report



*Train 1 setting propane substation transformers*



*Train 2 setting of lean solvent booster pumps*





*Train 2 setting regenerator reboiler*



*OSBL installation of instrument air receiver*



*OSBL setting nitrogen receiver tank*



*OSBL setting BOG compressors and BOG compressor lube oil coolers*





*OSBL setting of BOG compressor*



*OSBL installing platforms on BOG recycle KO drum*



Cheniere Energy, Inc.  
700 Milam Street, Suite 800  
Houston, Texas 77002  
phone: 713.375.5000  
fax: 713.375.6000

June 23, 2014

Ms. Kimberly D. Bose, Secretary  
Federal Energy Regulatory Commission  
888 First Street, N.E.  
Washington, D.C. 20426

**Re: Sabine Pass LNG, L.P. and Sabine Pass Liquefaction, LLC  
Monthly Construction Progress Report for Sabine Pass Liquefaction Project  
Docket Nos. CP11-72-000 & CP13-2-000**

Dear Ms. Bose:

On April 16, 2012, the Federal Energy Regulatory Commission ("FERC") issued an Order Granting Authorization under Section 3(a) of the Natural Gas Act ("April 16 Order") in the above-captioned docket. The Order authorizes Sabine Pass LNG, L.P. and Sabine Pass Liquefaction, LLC ("Sabine Pass") to site, construct, and operate the Sabine Pass Liquefaction Project at the Sabine Pass LNG Terminal, located in Cameron Parish, Louisiana. On August 2, 2013, the FERC issued an Order Amending Section 3 Authorization ("August 2 Order") for the Sabine Pass Modification Project.

Pursuant to Condition 7 in Appendix D of the April 16 Order, and Condition 7 of the August 2 Order, Sabine Pass is herein submitting its monthly construction progress report for May 2014.

Should you have any questions about this filing, please feel free to contact the undersigned at (713) 375-5000.

Thank you,

/s/ Karri Mahmoud

Karri Mahmoud  
Sabine Pass LNG, L.P.  
Sabine Pass Liquefaction, LLC

cc: Ms. Senth White, Federal Energy Regulatory Commission  
Ms. Karla Bell, Federal Energy Regulatory Commission  
Ms. Magdalene Suter, Federal Energy Regulatory Commission  
Mr. Stephen Kusy, Federal Energy Regulatory Commission

**SABINE PASS LIQUEFACTION PROJECT**  
**Cameron Parish, Louisiana**

**Monthly Progress Report**  
**May 2014**

Sabine Pass LNG, L.P. and Sabine Pass Liquefaction, LLC  
May 2014 Monthly Progress Report

**Table of Contents**

<b>1.0</b>	<b>Executive Summary.....</b>	<b>3</b>
<b>2.0</b>	<b>Project Highlights.....</b>	<b>3</b>
<b>3.0</b>	<b>Environmental, Safety &amp; Health Progress.....</b>	<b>3</b>
<b>4.0</b>	<b>Schedule.....</b>	<b>4</b>
<b>5.0</b>	<b>Construction .....</b>	<b>4</b>
<b>6.0</b>	<b>Permitting and Environmental.....</b>	<b>5</b>
<b>7.0</b>	<b>Progress Pictures .....</b>	<b>7</b>

## 1.0 Executive Summary

This report covers activities of the SPL Stage 1 and SPL Stage 2 projects occurring during the month of May 2014. Stage 1 Engineering is 98.5% complete, Procurement is 95.6%, and Subcontract and direct hire Construction work are 42.8% and 28.0% complete, respectively, for the period. Stage 1 overall project completion is 67.0% against the plan of 68.4%.

Stage 2 Engineering is now 71.5% complete, Procurement is 51.8%, and Subcontract and direct hire Construction work are 21.6% and 2.6% complete, respectively. Overall project completion for Stage 2 is 33.1% against the plan of 30.8%.

Actual project progress continues to support the achievement of the scheduled Substantial Completion Dates for Trains 1 and 2, which remain as February 2016 and June 2016, respectively. Trains 3 and 4 Substantial Completion Dates are April 2017 and August 2017.

## 2.0 Project Highlights

In May, Stage 1 Engineering continued with remaining punch list items. For Stage 2, Engineering completed the IFC of Equipment Location Plans (ELP's) and piling.

The final set of Train 1 refrigeration compressors arrived on site in May, as did the Train 2 CO<sub>2</sub> Absorber, and the Train 2 heavy wall vessels. The first Stage 2 columns & vessels departed the factory in May, and are scheduled to arrive at the site in July. Procurement continues to support construction activities at the jobsite through delivery of piping and structural items.

During the month of May, Subcontracts managed the following major subcontracts for Trains 1 and 2: soil improvement, field erected tanks, onsite concrete batch plant, offsite and onsite equipment insulation, permanent telecommunications, fire & gas detection, and the erection and supervision of GE equipment installation. Min/max trailer services for electrical supply and two onsite mechanics subcontracts were awarded. For Trains 3 and 4, Subcontracts managed the efforts for pile fabrication and installation, field erected tanks, and busing.

Construction in Train 1 continued working in structural and paving concrete, structural steel erection, installation of underground and aboveground piping, testing of aboveground pipe, installation of electrical grounding, cable tray, lighting, control cable, and mechanical equipment. Train 2 continued working in structural and paving concrete, structural steel erection, electrical grounding, installation of underground and aboveground pipe, and cable tray installation. Construction in the Stage 1 OSBL area continued with structural and paving concrete, structural steel erection, electrical grounding, installation of underground and aboveground pipe, testing of aboveground pipe, cable tray installation and mechanical equipment installation. In the Revamp area, structural steel erection continued along with aboveground piping, electrical conduit, cable, and tray.

Construction in Train 3 continued working in structural concrete, installation of underground piping, and commenced erection of structural steel. Train 4 continued working in piling, and commenced structural concrete and installation of underground piping. Construction in the Stage 2 OSBL continued with the placement of structural concrete and commencement of underground piping fabrication.

## 3.0 Environmental, Safety & Health Progress

During the month of May, the Project had 67 First-Aids, 28 Near Misses, 5 OSHA recordable cases, and 1 LWDC.

Sabine Pass LNG, L.P. and Sabine Pass Liquefaction, LLC  
May 2014 Monthly Progress Report

	Near Miss Cases		First Aid		OSHA Cases		LWDC Cases	
	Month	ITD <sup>1</sup>	Month	ITD <sup>1</sup>	Month	ITD <sup>1</sup>	Month	ITD <sup>1</sup>
Bechtel	28	179	67	455	4	20	0	2
Subcontractors	0	29	0	23	1	6	1	1
<b>Total</b>	<b>28</b>	<b>208</b>	<b>67</b>	<b>478</b>	<b>5</b>	<b>26</b>	<b>1</b>	<b>3</b>

<sup>1</sup> ITD = Project totals reflect inception to date and are combined for Stage 1 & 2.

#### 4.0 Schedule

Overall, Train 1 and 2 project progress is 67.0% complete against a plan of 68.4%. Overall Train 3 & 4 project progress is 33.1% complete against a plan of 30.8% complete.

#### 5.0 Construction

Area	Comments	Planned Work for Next Reporting Period
Liquefaction Stage 1 Area – Train 1	<ul style="list-style-type: none"> <li>• Continued to install foundations.</li> <li>• Continued to erect structural steel.</li> <li>• Continued pipe installation.</li> <li>• Continue installing electrical cable tray.</li> <li>• Continue setting major equipment: compressors and turbines, reflux drum, HS propane-methane/ethylene chiller and hot oil surge drum.</li> <li>• Setting of air coolers continued.</li> </ul>	<ul style="list-style-type: none"> <li>• Continue to erect structural steel.</li> <li>• Continue pipe installation.</li> <li>• Continue installing electrical cable tray.</li> <li>• Continue setting major equipment.</li> <li>• Continue constructing foundations.</li> </ul>
Liquefaction Stage 1 Area – Train 2	<ul style="list-style-type: none"> <li>• Completed surge drum foundation.</li> <li>• Commenced work in substation HVAC/Transformer pads.</li> <li>• Continued to erect structural steel.</li> <li>• Continued pipe installation.</li> <li>• Continue installing electrical cable tray.</li> <li>• Continue setting major equipment: preheater, solvent regenerator reflux drum, analyzer shelters, regeneration gas compress and regeneration knock out drum, and H2S removal skids.</li> </ul>	<ul style="list-style-type: none"> <li>• Continue to erect structural steel.</li> <li>• Continue pipe installation.</li> <li>• Continue installing electrical cable tray.</li> <li>• Continue setting major equipment.</li> <li>• Continue constructing foundations.</li> </ul>
Liquefaction Stage 2 Area – Train 3	<ul style="list-style-type: none"> <li>• Completed base slab construction in several areas.</li> <li>• Continued the construction of cast in place columns.</li> <li>• Train 3 continued construction of the Amine and Hot Oil Sumps.</li> <li>• Commenced the placement of area paving concrete.</li> <li>• Completed underground pipe installation along the western portion of the unit.</li> <li>• Commenced erection of structural steel for propane condenser.</li> <li>• Commenced bolt-up of structural steel for the cryo rack.</li> </ul>	<ul style="list-style-type: none"> <li>• Continue soil stabilization.</li> <li>• Continue pile driving.</li> <li>• Continue activities to support construction.</li> </ul>

Sabine Pass LNG, L.P. and Sabine Pass Liquefaction, LLC  
May 2014 Monthly Progress Report

Area	Comments	Planned Work for Next Reporting Period
Liquefaction Stage 2 Area – Trains 4	<ul style="list-style-type: none"> <li>• Continued driving/cutting piles.</li> <li>• Commenced fabrication of underground pipe along the southern portion of the unit.</li> </ul>	<ul style="list-style-type: none"> <li>• Continue soil stabilization.</li> <li>• Continue pile driving.</li> </ul>
OSBL	<ul style="list-style-type: none"> <li>• Completed foundations.</li> <li>• Pile caps continued.</li> <li>• Continued paving concrete trenches.</li> <li>• Continued to erect structural steel.</li> <li>• Continued pipe installation.</li> <li>• Began installing electrical cable tray.</li> <li>• Continue setting major equipment: water treatment package.</li> <li>• Wet/dry flares will continue with the preassembly and dress-out.</li> <li>• Epoxy grout of mechanical equipment will continue in the different areas.</li> </ul>	<ul style="list-style-type: none"> <li>• Continue activities to support construction.</li> </ul>
Support Buildings	<ul style="list-style-type: none"> <li>• Continued construction of the warehouse and control room.</li> </ul>	<ul style="list-style-type: none"> <li>• Continue warehouse and control room work.</li> </ul>
Access Roads, Waterline	<ul style="list-style-type: none"> <li>• Water trucks were operated for dust control, as necessary.</li> </ul>	<ul style="list-style-type: none"> <li>• Dust control will continue.</li> </ul>
Laydown, Staging Areas	<ul style="list-style-type: none"> <li>• Continued mixing for soil stabilization and began laying rock in the area north of Trains 3 and 4.</li> </ul>	<ul style="list-style-type: none"> <li>• Contractors will continue to mobilize personnel and equipment.</li> </ul>
Construction Dock (Ro-Ro)	<ul style="list-style-type: none"> <li>• Received and offload piles and equipment at the construction dock.</li> </ul>	<ul style="list-style-type: none"> <li>• Continue to receive piles and equipment.</li> </ul>
Revamp Area	<ul style="list-style-type: none"> <li>• Revamp pedestals completed.</li> <li>• Continued to erect structural steel.</li> <li>• Continued installing electrical cable tray.</li> </ul>	<ul style="list-style-type: none"> <li>• Continue activities to support construction.</li> </ul>

## 6.0 Permitting and Environmental

### Summary of Problems, Non-Compliances, and Corrective Actions.

Date	Description
None.	

### Agency Contacts/Inspections

Agency	Name	Date	Location/Activity
None.			

### Proposed Changes to Schedule or Scope:

Sabine Pass is adding three additional buildings to support Liquefaction operations. They include a second warehouse, a maintenance building and the RTFC (Refinery Terminal Fire Company) building. Each building will provide support for the additional equipment and staff required for the Liquefaction facilities. Please refer to the attached plot plan for the locations of the new buildings.

- Warehouse Building (#20B) is a second warehouse and will be approximately 250' X 100'. It will support equipment spare part inventory programs for the terminal facilities.
- Maintenance Building (#57) will be approximately 150' X 83' and used to support liquefaction operations.

Sabine Pass LNG, L.P. and Sabine Pass Liquefaction, LLC  
May 2014 Monthly Progress Report

- RTFC Building (#58) will be approximately 60' X 30' and used to support liquefaction operations and store/maintain/inspect emergency and safety supplies.

All buildings will be located near the existing administrative buildings in the already approved industrial landuse of the Operating Facility. There will be no additional emission sources, and no proposed conversion of existing landuse; therefore no additional environmental permits are necessary. Once the building designs are finalized, Sabine Pass will obtain the appropriate building permits from the Office of State Fire Marshal Code Enforcement and Building Safety prior to occupancy.



## 7.0 Progress Pictures



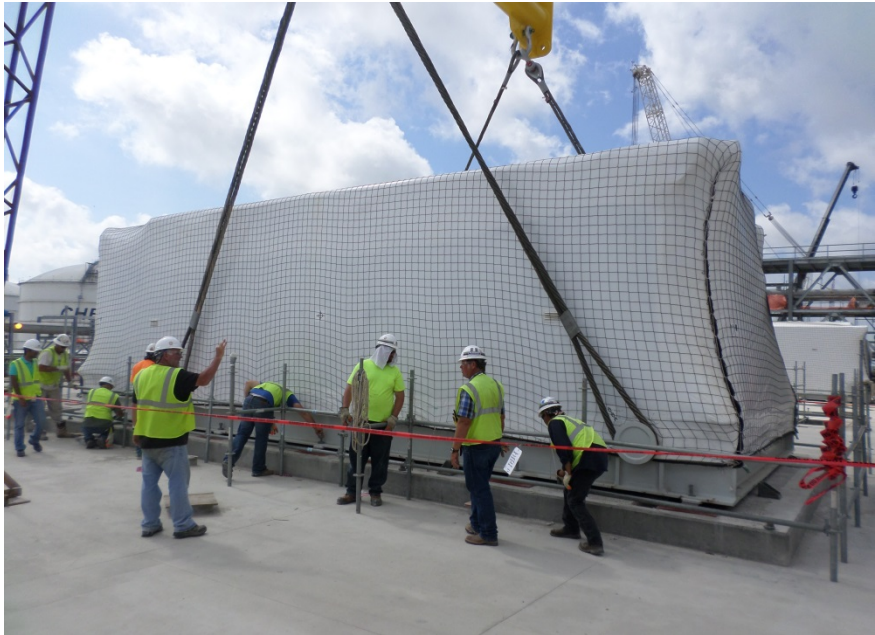
*Train 1 installing steel around HS propane methane ethylene chiller*



*Train 1 installing platforms on heavies removal column*



*Train 1 H2S removal package skids installed*



*Train 1 gas turbine skid setting*



Sabine Pass LNG, L.P. and Sabine Pass Liquefaction, LLC  
May 2014 Monthly Progress Report



*Train 1 installing pipe on solvent charge pumps*



*Train 2*



*Train 2 steel installation*



*OSBL setting dry gas flare vaporizer*



*OSBL setting utility substation*



*OSBL installing pipe*