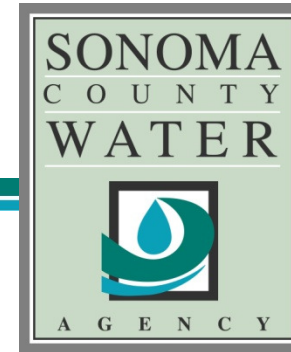


# Farms to Fuel

---



Amy Bolten

Public Information Officer

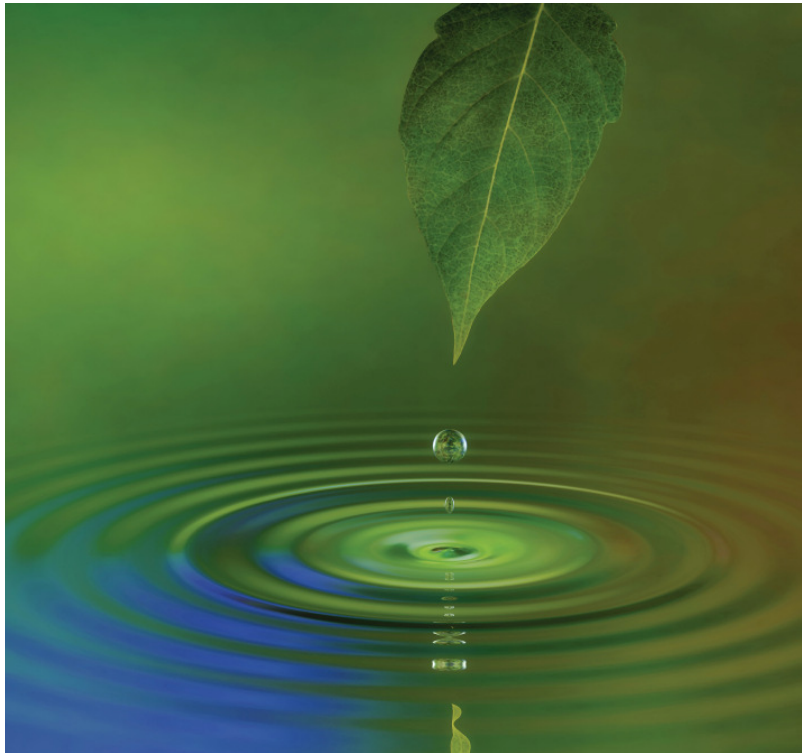
[Amy.Bolten@scwa.ca.gov](mailto:Amy.Bolten@scwa.ca.gov)



# Farms to Fuel

---

- Carbon Free Water by 2015



- One of the largest energy users in Sonoma County
- Goal of operating Carbon Free Water system by 2015
- Diverse energy portfolio

# Farms to Fuel

---

- Agriculture big part of Sonoma County
  - Poultry and eggs ranked 6<sup>th</sup> in the state



# Farms to Fuel

---

- Local Agriculture Statistics
  - 2007 Census of Agriculture – Sonoma County
    - -1% change # of Farms
    - -15% change Land in Farms
    - -15% change in avg. size of farm



# Farms to Fuel

---

- RCM Study  
Dairy vs. Chickens



“Chicken manure provides the highest consistent biogas potential of all available feedstocks.”

– RCM Report January 2010

# Farms to Fuel

---

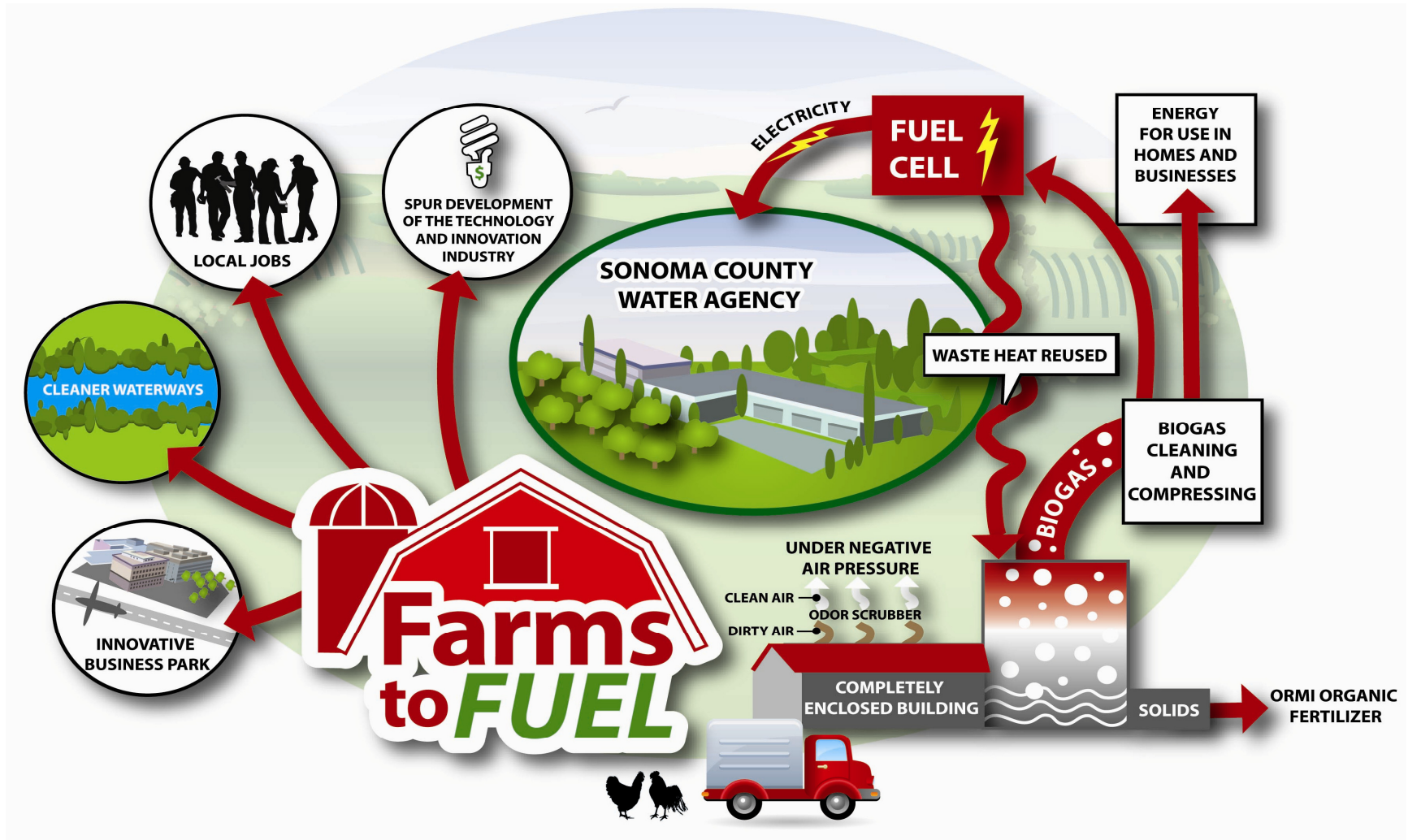
## BioStar Partnership

- Organic Waste Management
- Renewable Energy
- Organic Fertilizer, NPK

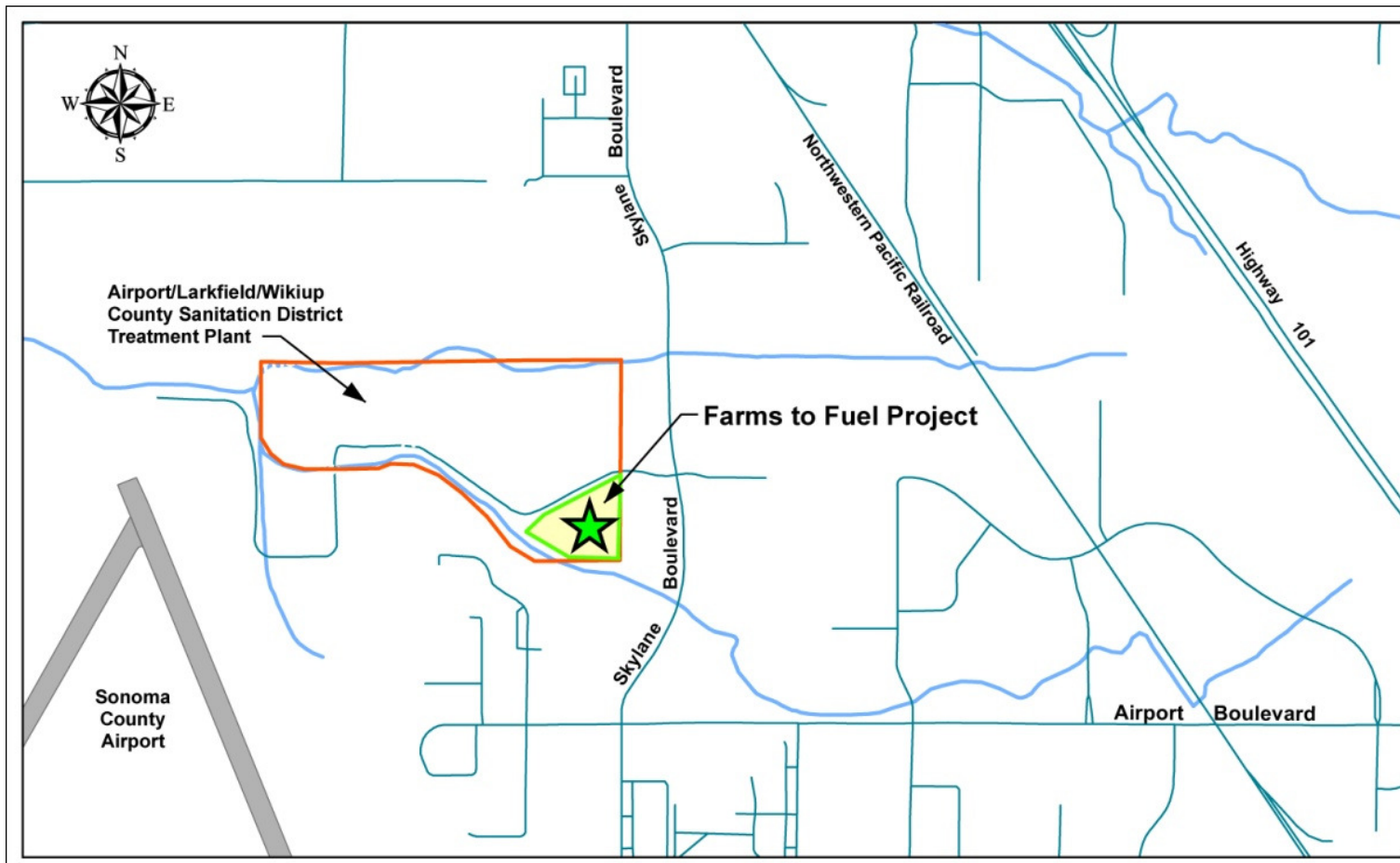




# Farms to Fuel



# Farms to Fuel - Location





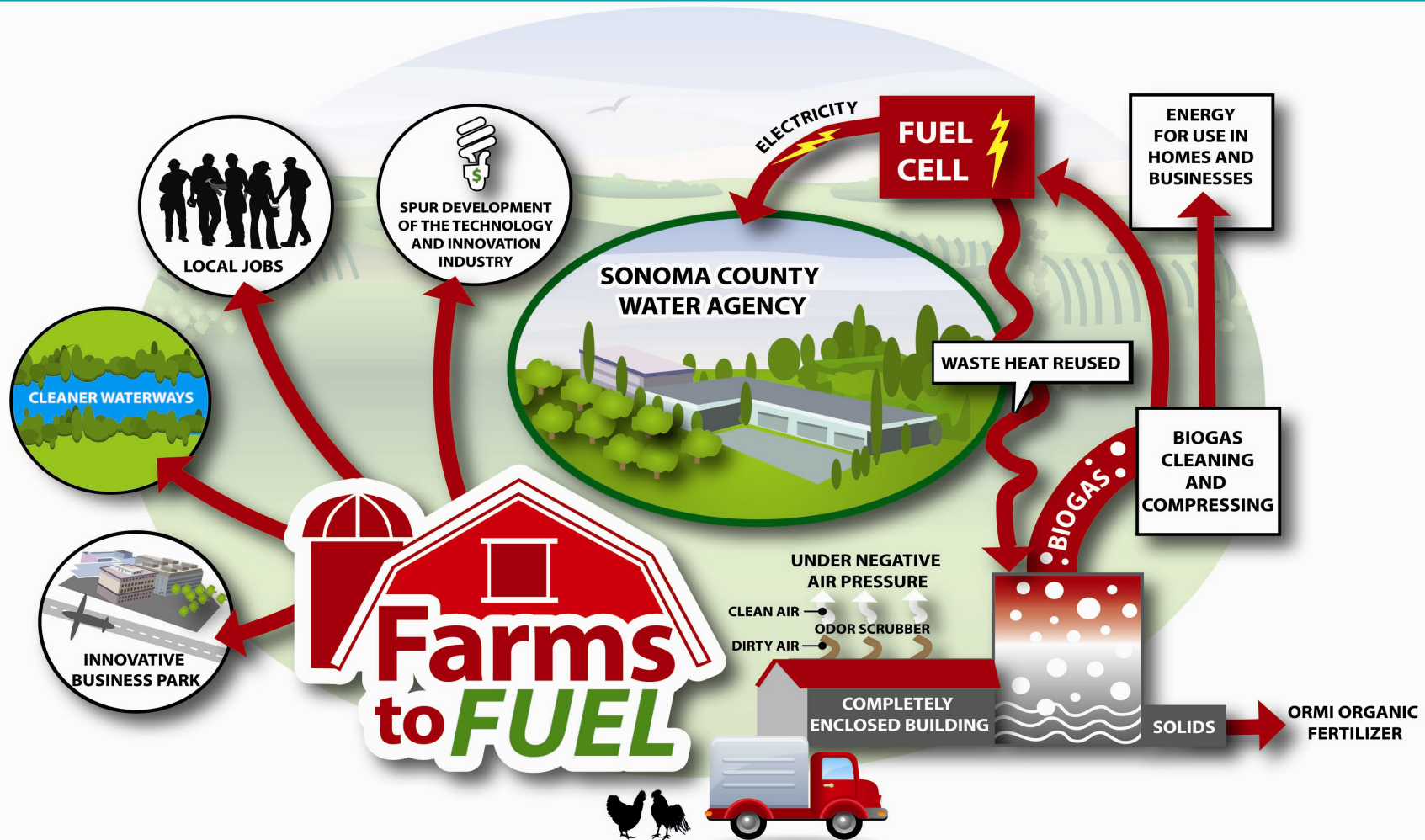
# Environmental Impacts

---



- 5 covered trucks per day entering the facility with chicken manure
- 21 additional vehicles for employees and operations

# Farms to Fuel



# Environmental Impacts

---

- Air drawing from the processing buildings would be passed through odor scrubbers to eliminate odors.



# Environmental Benefits

---

- Reduces Water Agency's dependence on fossil fuels



- Byproduct of anaerobic digestion
  - ORMI organic fertilizer



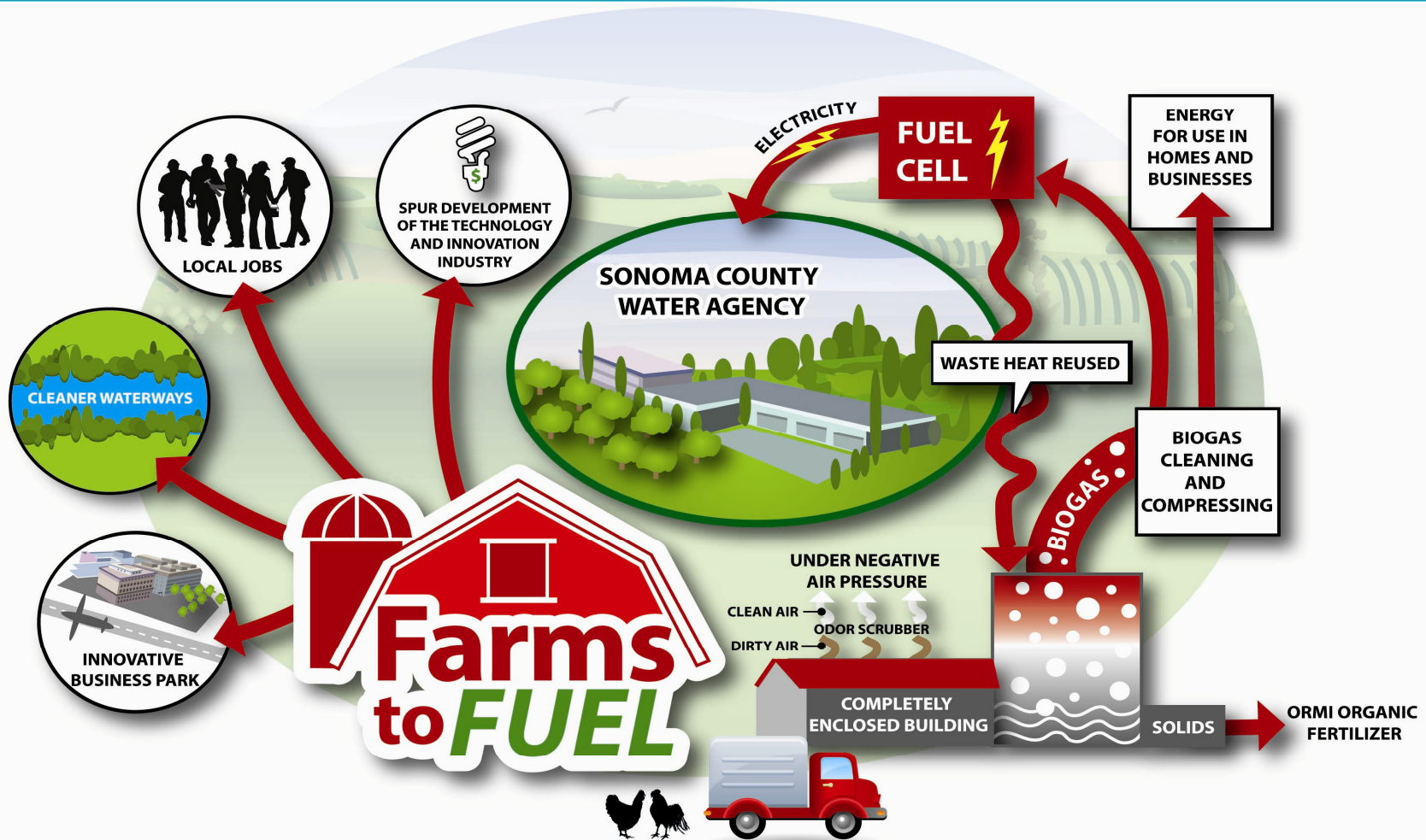
# Environmental-Economic Benefits

---

- 820,000 cubic feet of BioMethane per day
- 5.2 MW of electricity annually
- Reduce GHG by 41,300 tons per year



# Farms to Fuel





# Economic Benefits

---

- Represents up to \$55M direct capital investment in the business park.
- Assists in developing the Clean Tech industry in Sonoma County.



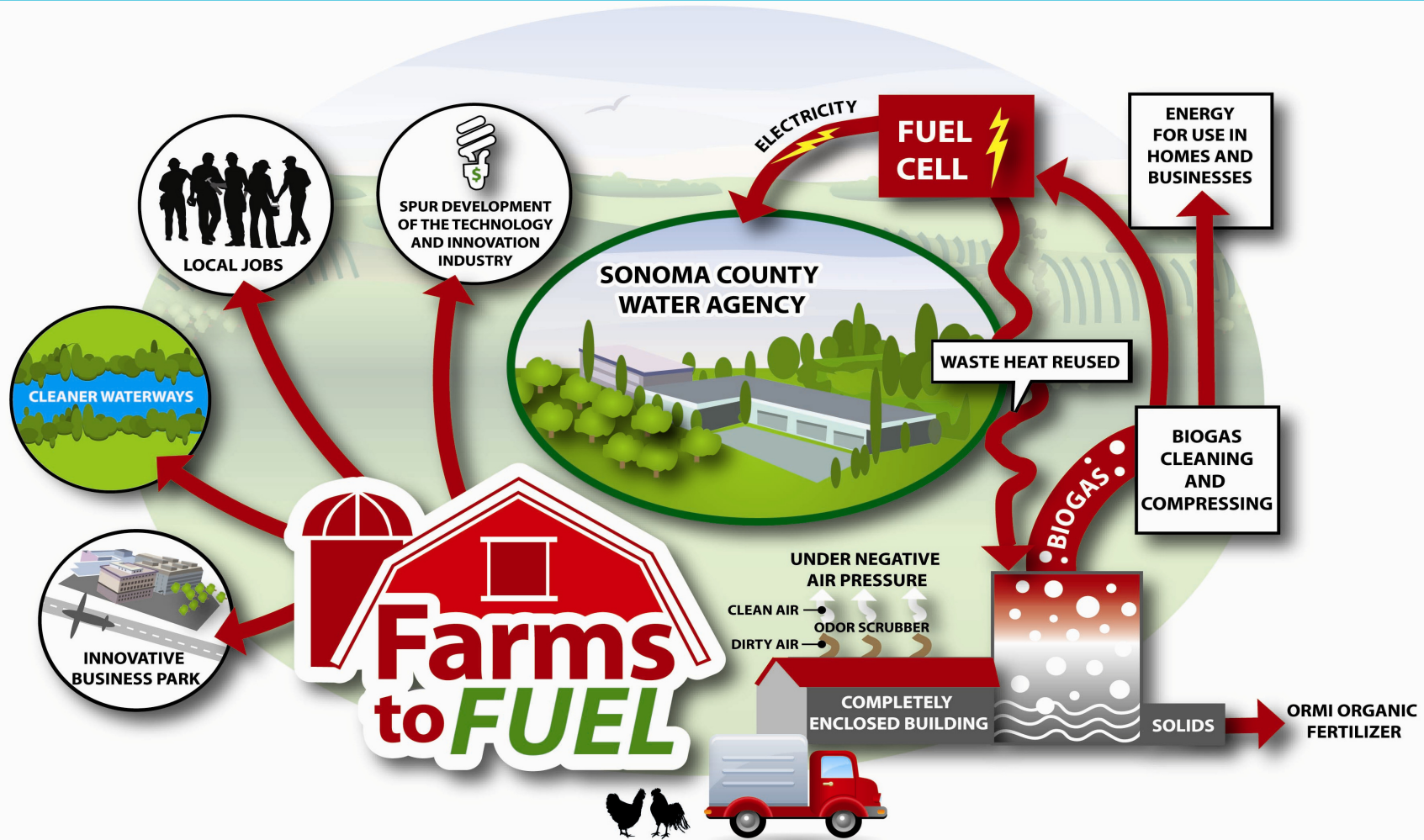
# Economic Benefits

---

- Provides 36 permanent jobs and 94 temporary jobs during construction

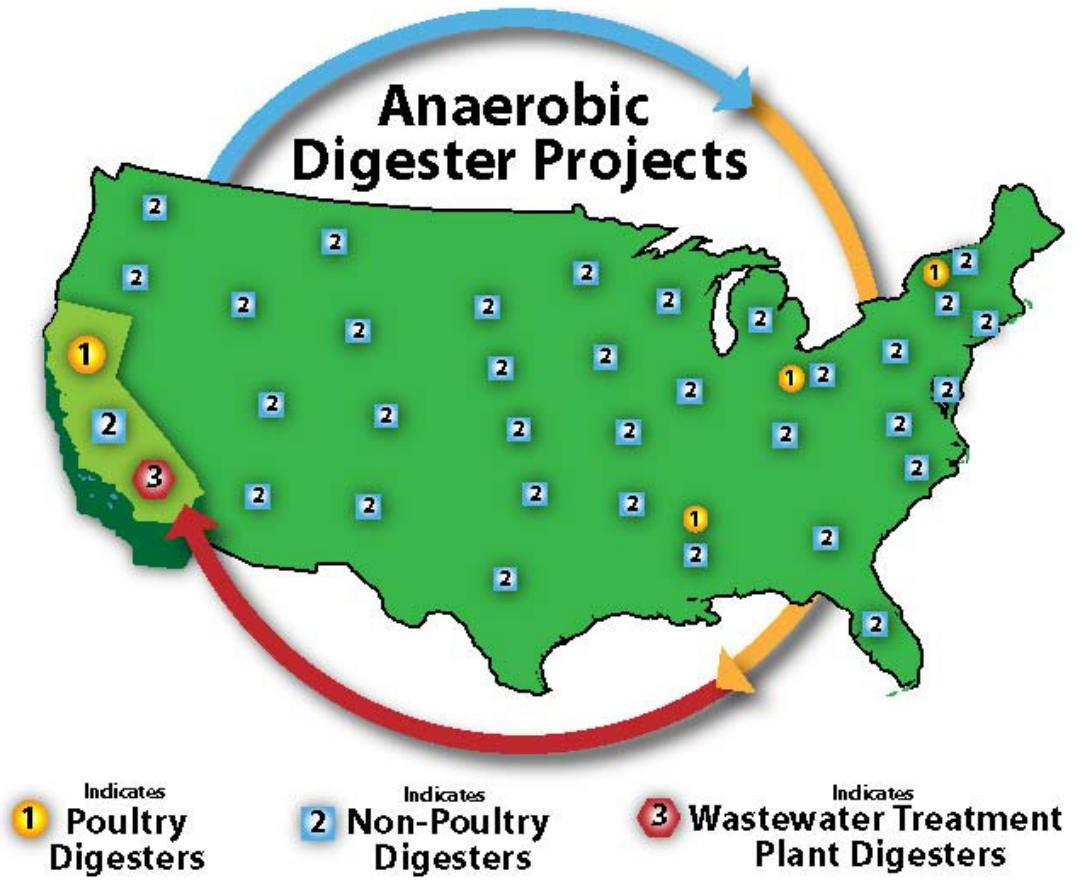


# Farms to Fuel



# Farms to Fuel - established technology

---



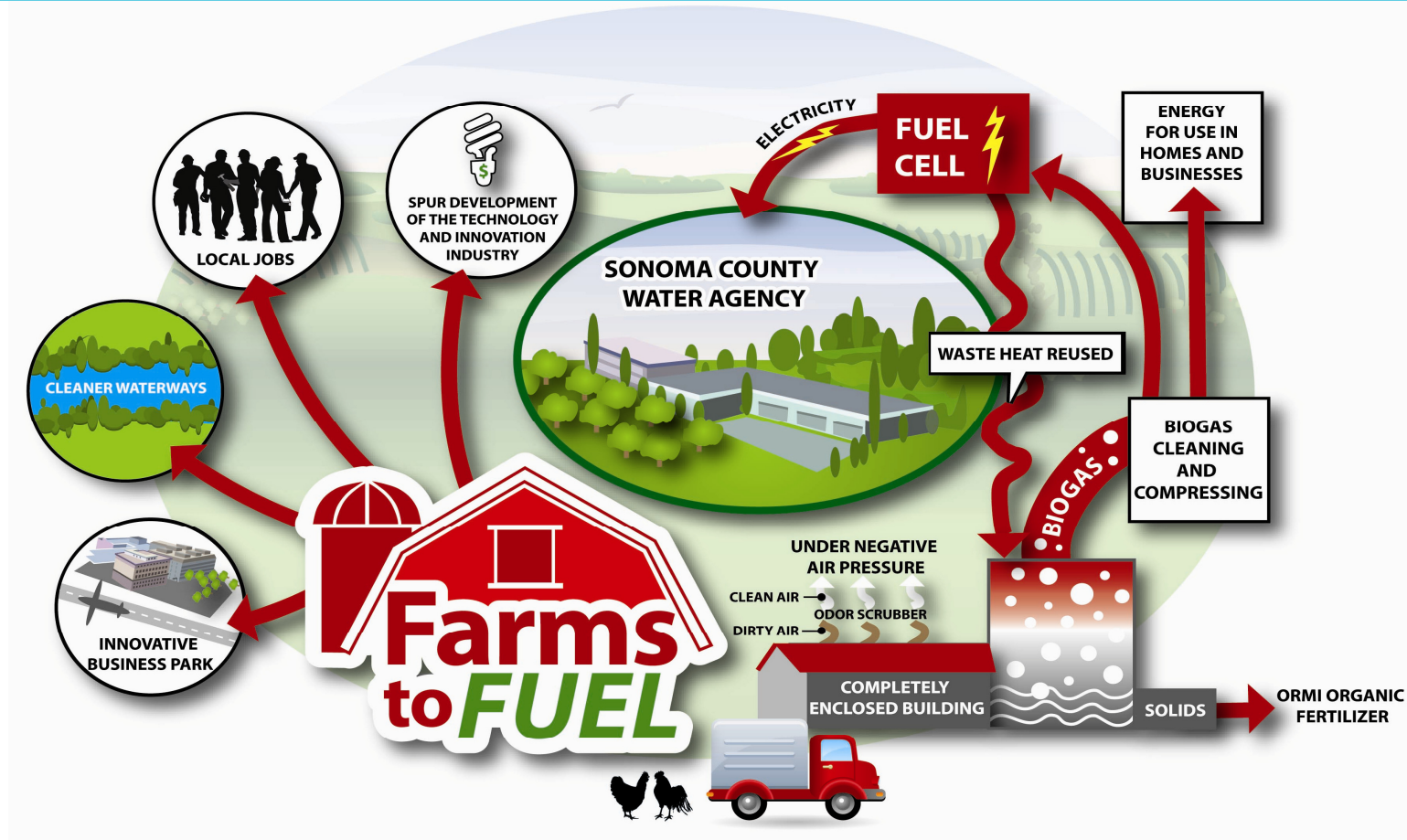
# Timeline

---





# Farms to Fuel



Amy Bolten

Public Information Officer