



## Validation of Innovative Exploration Technologies for Newberry Volcano

Principal Investigator and  
Presenter: Albert Waibel  
Columbia GeoScience  
for  
Davenport Newberry ("Davenport")

- Newberry Volcano is a blind resource location (no surface features such as hot springs, fumaroles, faults or surface geochemical sampling targets) and has a deep water table
- Test a combination of 8 new and traditional exploration techniques to identify and develop blind hot plutons and geothermal resources in young volcanic terra.
- Integrate new and existing data, identify target and validate by drilling an exploration well.
- Apex HiPoint conducted a 4-D passive seismic test using their patent pending LASEA (Low Amplitude Seismic Emission Analysis) technology
- Using the right combination of technologies will assist Davenport in locating hundreds of megawatts of potential geothermal resources at Newberry for use in future hydrothermal and EGS plants.
- This approach can be deployed in other areas (i.e. Cascade, Alaska and Aleutian Range) with similar geologic characteristics

- This project allowed for the systematic analysis by the scientific team to evaluate, find strengths and flaws, in the application and interpretation of each geophysical technique as a functioning contribution to the whole.

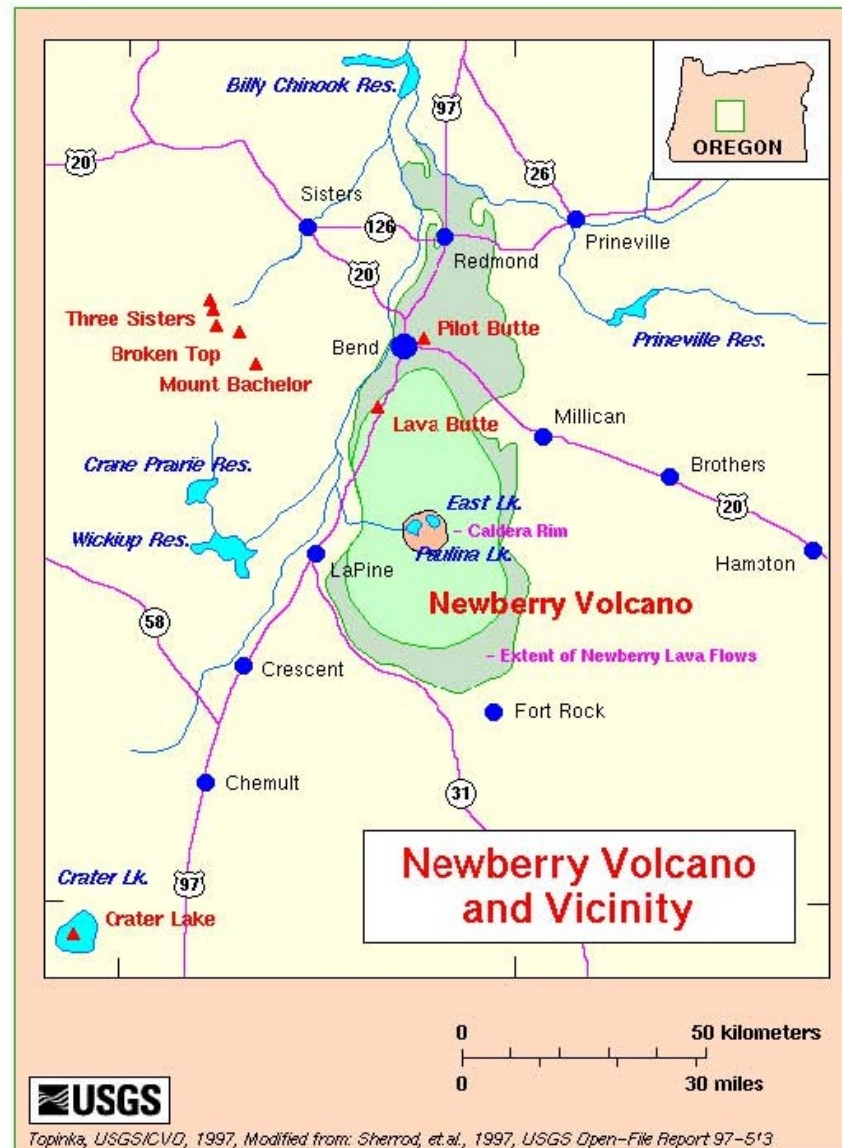
The assumptions of interpretation and the data processing were re-evaluated in light of data from other techniques.

Geology, Volcanology, Gravity, MT, Aeromagnetic, LIDAR, Seismic (LASEA), Well Data, Volcanic-Hosted Hydrothermal Mineral Deposits

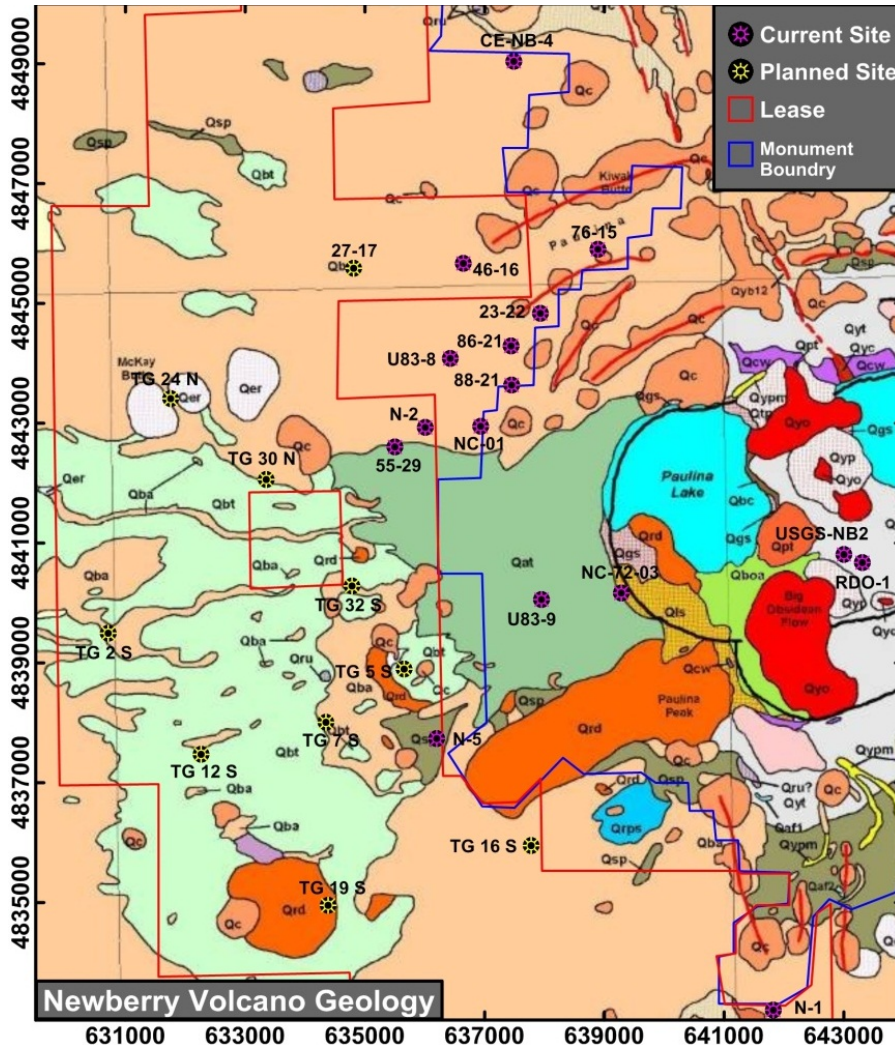
Markedly different understanding of the structure and history of Newberry Volcano

- Continued reprocessing MT data with Zonge: integration of MT, gravity, well logs and LIDAR producing a better understanding of hydrothermal targets and exploration strategies (Stanford Geothermal Workshop publication, 2013)
- **Sigma<sup>3</sup>** (Apex HiPoint) completed final processing of the LASEA (Low Amplitude Seismic Emission Analysis) data on four wells
- The complete Davenport scientific team, including contractors, convened a multi-day meeting to discuss data and to share insights into their views of the volcano and to advance the multi-disciplinary strategy for geothermal exploration on the volcano.

# Newberry Volcano Project Location

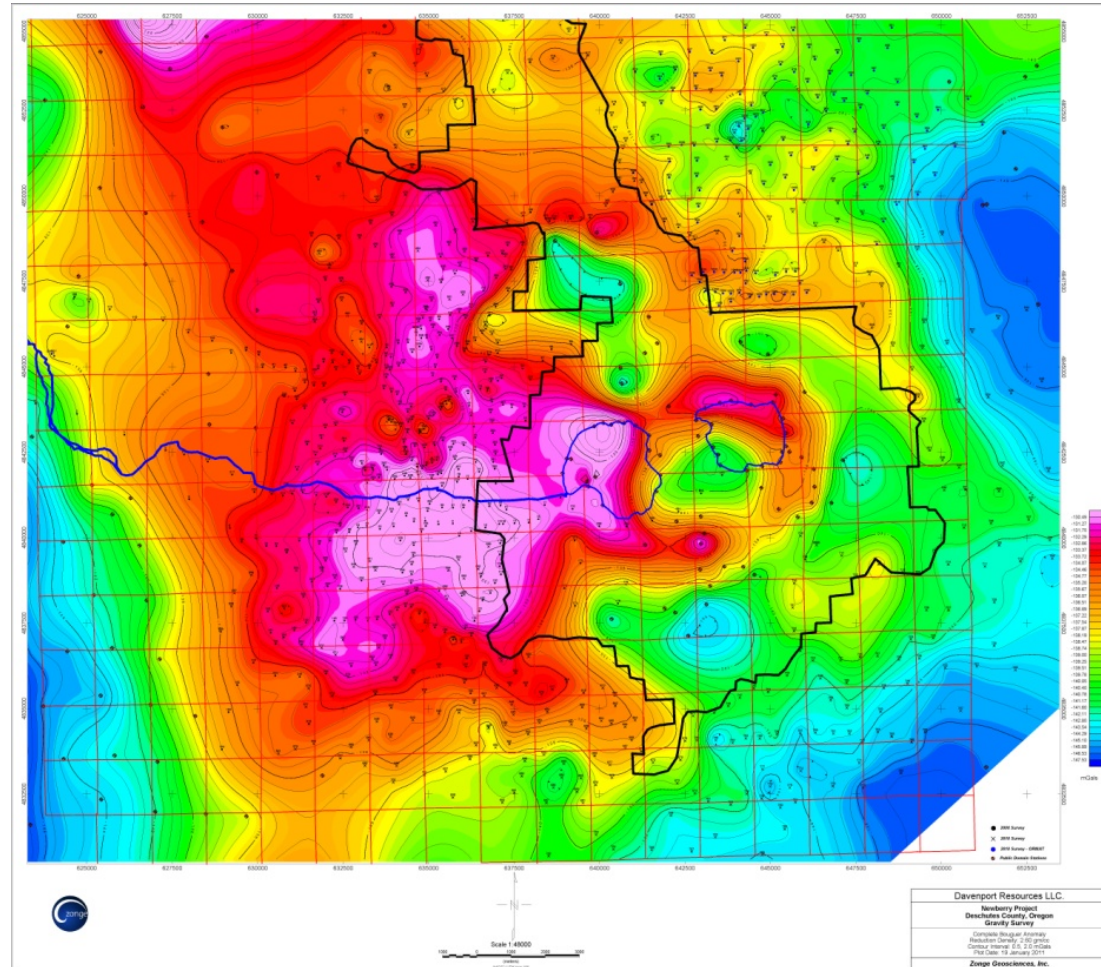


## Geologic Map of Newberry

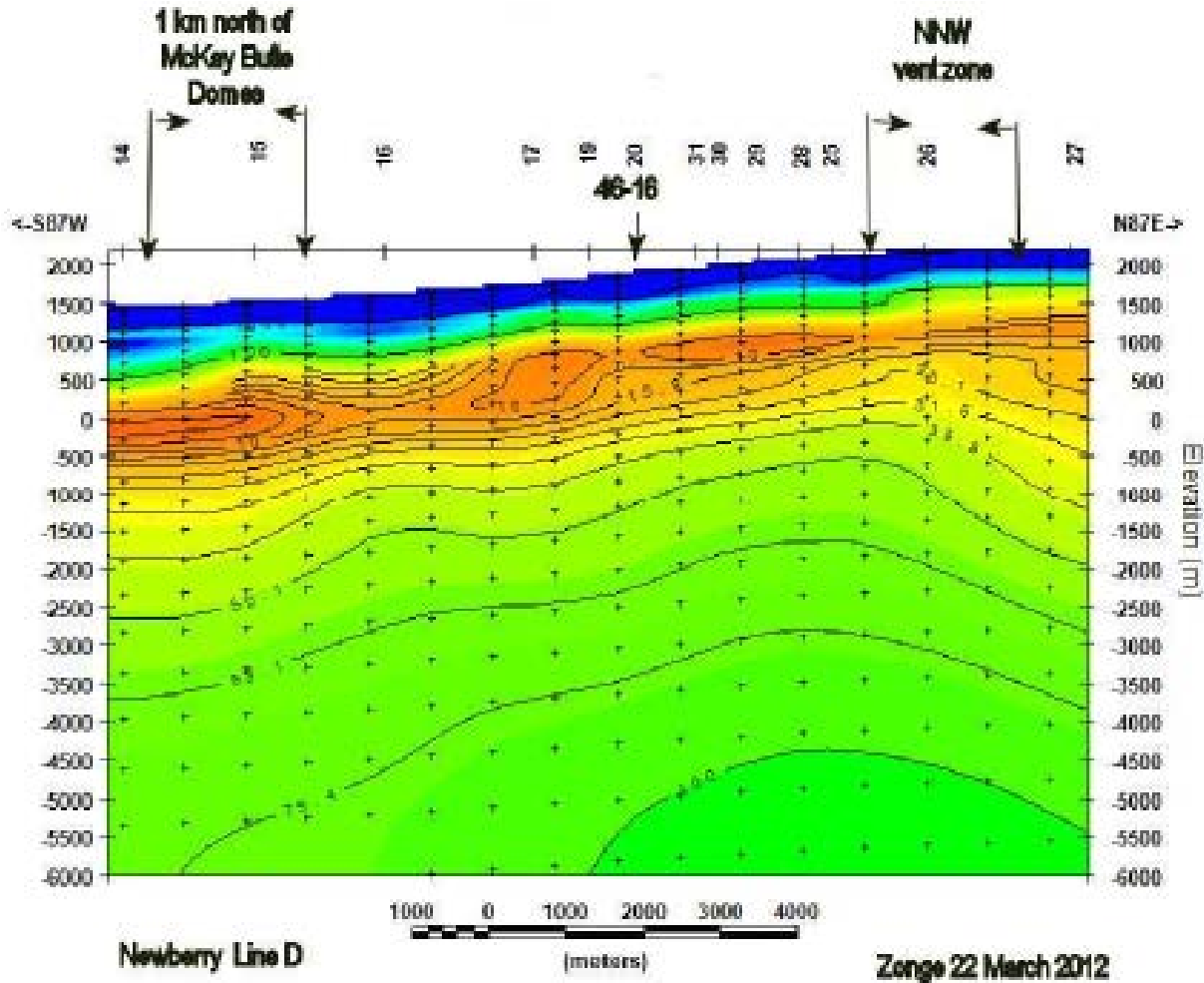


- Qsp Sedimentary and pyroclastic deposits (Pleistocene)
- Qyo Young obsidian flows of the caldera (Holocene)
- Qboa Deposits of Big Obsidian eruptive period (Holocene)
- Qyt Young rhyolitic tephra (Holocene and Pleistocene?)
- Qyp Pumice-cone and ring deposits of the caldera (Holocene and Pleistocene?)
- Qrd Rhyodacite domes and flows (Pleistocene)
- Qat Andesitic tuff (Pleistocene)
- Qbt Basaltic andesite lapilli tuff (Pleistocene)
- Qer Early rhyolite domes and flows (Pleistocene)
- Qba Basaltic andesite (Holocene? and Pleistocene)
- Qc Cinder cone and fissure-vent deposits (Holocene? and Pleistocene)

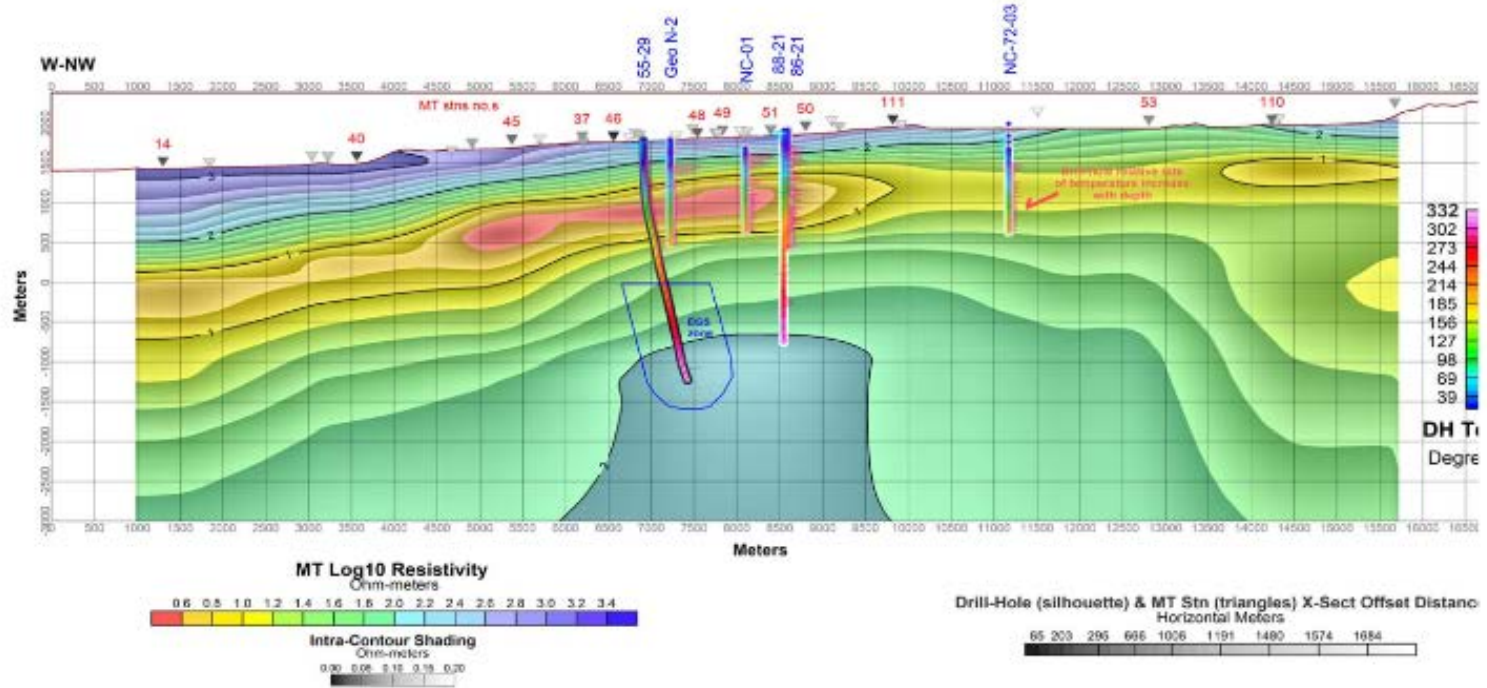
## Gravity Map



*Complete Bouguer Anomaly with a reduction density value of 2.60 gm/cc.  
East Lake, Paulina Lake and Paulina Creek are shown in blue. The Monument boundary is outlined in black.*





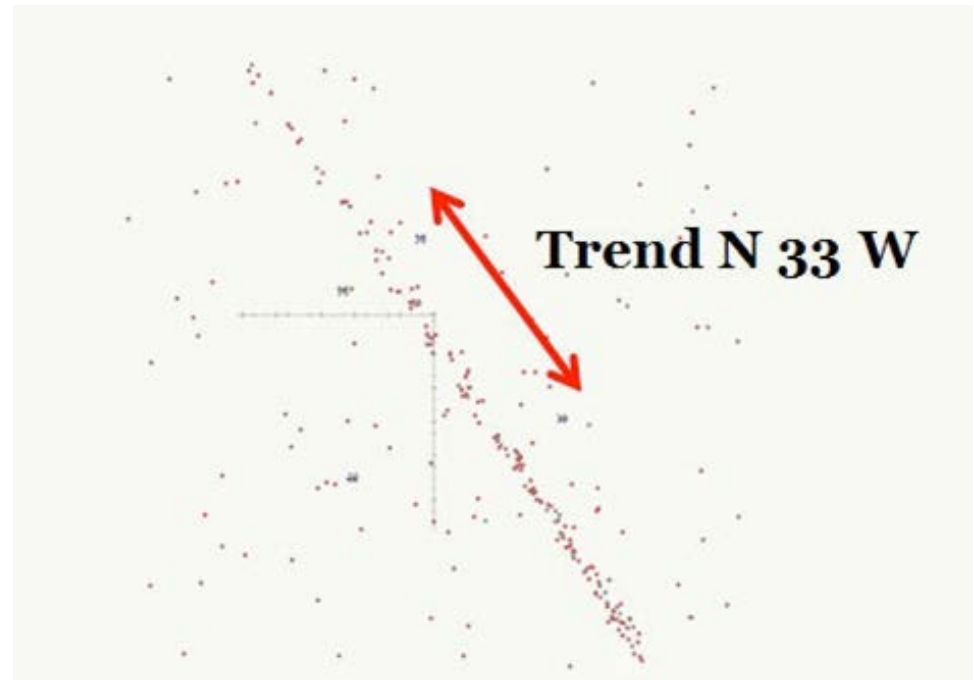


- **Location of Sigma<sup>3</sup> LASEA seismic study**



Episodic signal pattern due to:

- Fluid movement along structure.
- Micro-structural movement.
- Signal reflection from distal sources, reflected along a linear structure.



# Accomplishments, Results and Progress

Original Planned Milestone/ Technical Accomplishment	Actual Milestone/Technical Accomplishment	Date Completed
<p>Complete Temperature gradient holes</p> <p>Complete Microseismic surveys</p> <p>Complete MT data processing</p> <p>Complete Microseismic data processing</p> <p>Scientific Team Collaboration</p>	<p>Only shallow cased portions were completed</p> <p>Completed southern 4-hole survey</p> <p>Completed MT data processing</p> <p>Completed Microseismic data processing</p> <p>Scientific Team Collaboration</p>	<p></p> <p>Dec. 2012</p> <p>Nov. 2012</p> <p>Dec. 2012</p> <p>Apr.-Sept.- Dec. 2012</p>
<p>Well Cuttings Chem-Petrography Publication, Public Outreach</p>	<p>Well Cuttings Chem-Petrography Publication, GRC Trans. Meetings, Field Trip, Univ. Lectures</p>	<p>ongoing</p> <p>Oct. 2012</p> <p>Mar-Apr- June-Aug 2012</p>
<p>Temperature</p>	<p>Measured Temp. in shallow cased wells</p>	<p>Aug. 2012</p>

- All data are shared with the Alta Rock EGS sister project.
- MT and other data have been shared with Oregon State Univ. geophysical team conducting research on Newberry Volcano.
- Partial data has been given to the DOE Geothermal Data Repository. As the program progresses and after analysis and integration of data is completed, additional data will be provided to DOE

- Davenport Newberry is now administered by Alta Rock Energy.
- Davenport anticipates the cumulative results of this program will facilitate identification of deep geothermal exploration drill targets.
- Davenport is applying the new integrated model to plan next-step actions in the vicinity of well 46-16 (with hydrothermal intersects) and to plan step-out exploration beyond the western flank of the volcano.
- Davenport's short term (summer 2013) priority is to complete the microseismic survey in the northern well set.
- Continue Publications and University and Public outreach.

- DONOT Rely on Kneejerk interpretations of data.
- Integrate all aspects of geology into the combined interpretation of data for each unique location.
- Exploration is teamwork.
- Changes in commodities and the economy can trump best intentions.
- *A priori* logic can lead to bankrupt companies.

Federal Share	Cost Share	Planned Expenses to Date	Actual Expenses to Date	Value of Work Completed to Date	Funding needed to Complete Work
1,399,269	1,532,057	10,132,664	2,931,269	30%	7,434,883

Active communication with stakeholders, communities, government agencies and various organizations

- Public meetings, annual public field trip, open office, newsletters, team meetings, Geothermal Resources Council meeting presentation and publication, SMU lectures

Coordination with BLM and USFS schedules and restraints

Coordination / sharing information with EGS demo project

- Providing full technical data base, supervision, public relations, permitting, scheduling

Managing delays

- Economics of Renewable Energy vs. Natural Gas