

# HEV Fleet Testing



**2010 Ford  
Fusion**  
VIN: 4699

## Fleet Testing Results To Date

### Operating Statistics

Distance Driven<sup>1</sup>: 73,490  
Average Trip Distance<sup>2</sup>: 10.8 mi  
Stop Time with Engine Idling<sup>2</sup>: 13%  
Trip Type City/Highway<sup>2</sup>: 86%/14%

### Operating Performance

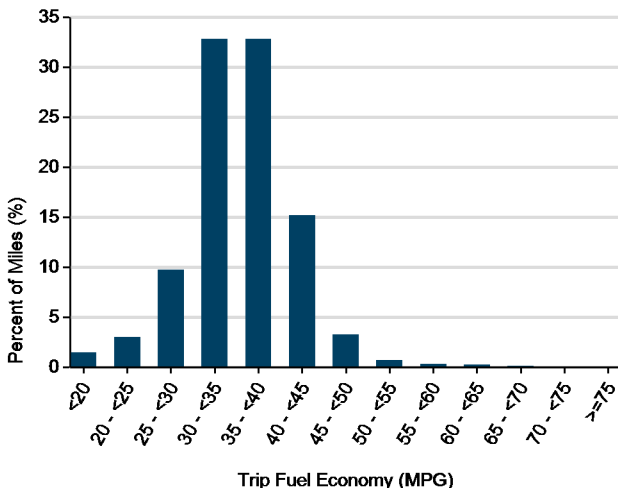
Cumulative MPG<sup>1</sup>: 33.8

*See HEV America Baseline Performance and Fleet Testing Fuel Economy fact sheets for more information on vehicle specifications and fuel usage reporting, available at <http://avt.inl.gov/>*

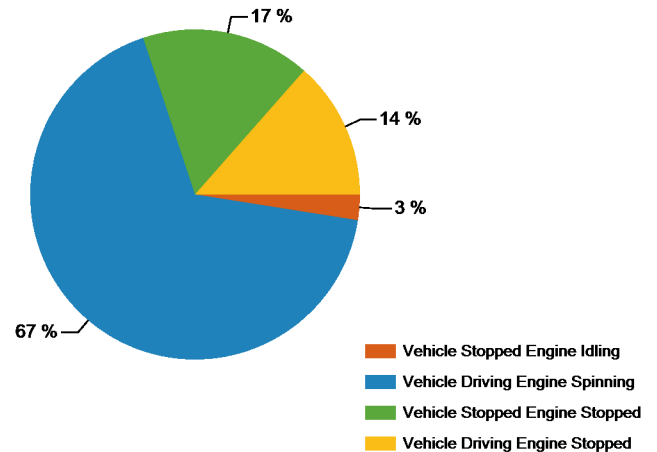
### Test Notes

1. Calculated over the life of the vehicle based on odometer reading and fuel logs. More information available in Fleet Testing Fuel Economy sheet.
2. Calculated from electronic data logged over a subset of total miles traveled equal to 70,043 miles.
3. Fuel economy calculated for this figure using mass air flow over dynamic vehicle operation.
4. Calculated from battery current data logged over a subset of total miles traveled, equal to 37,047 miles.

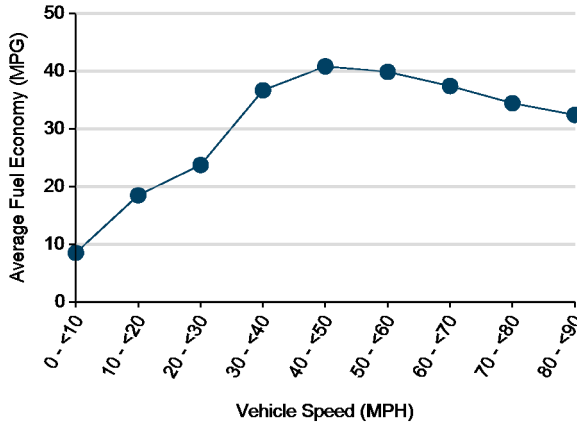
Distribution of Trip Fuel Economy<sup>2, 3</sup>



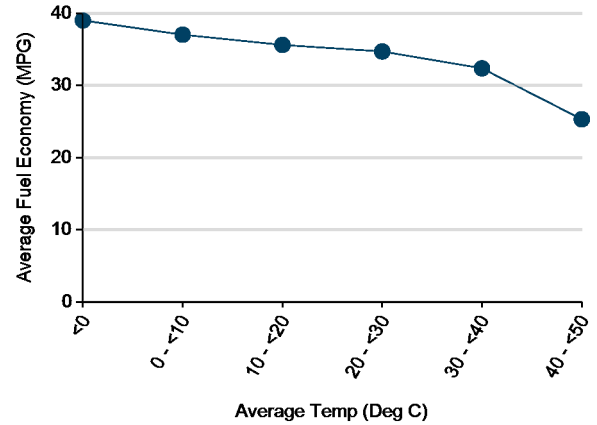
Percent of Drive Time by Operating Mode<sup>2</sup>



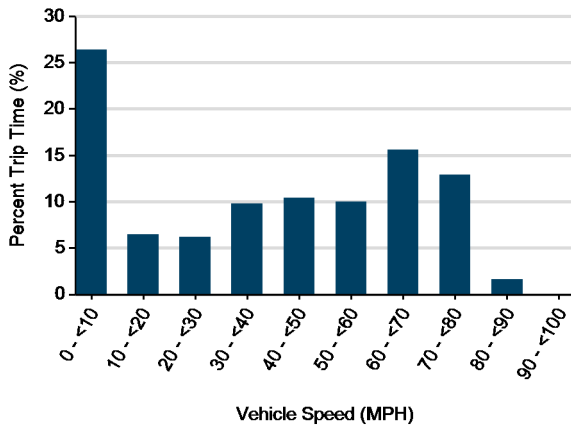
Average Fuel Economy at Speed<sup>2 3</sup>



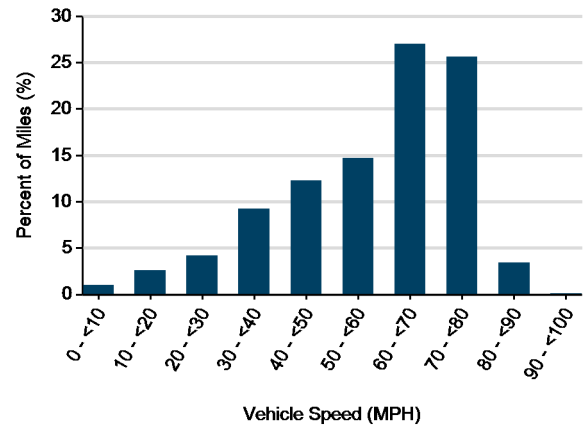
Average Fuel Economy vs Average Temp<sup>2 3</sup>



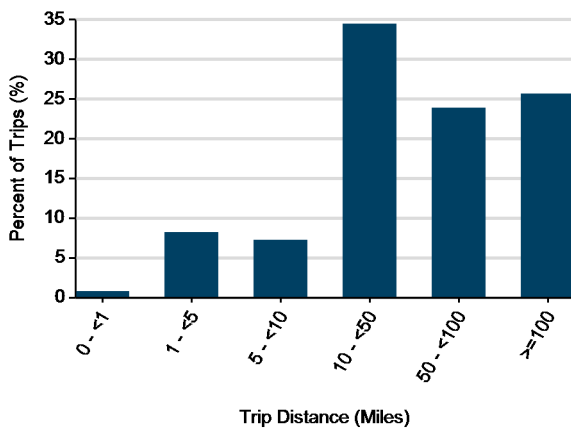
Distribution of Vehicle Speed<sup>2</sup>



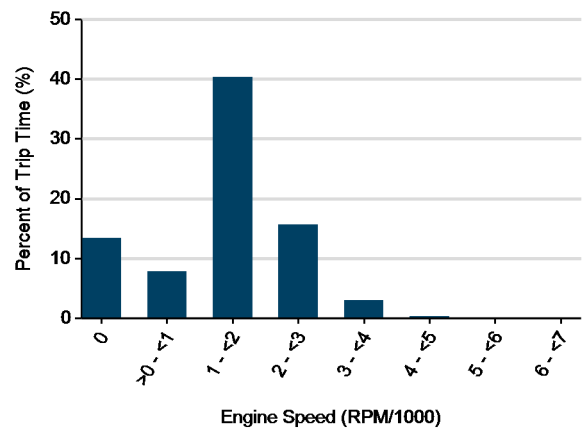
Distribution of Vehicle Speed<sup>2</sup>

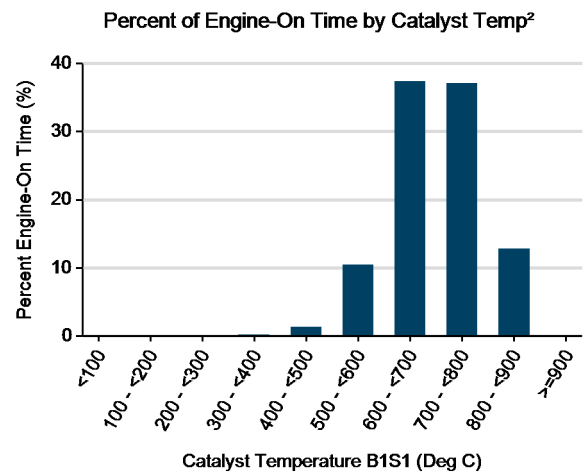
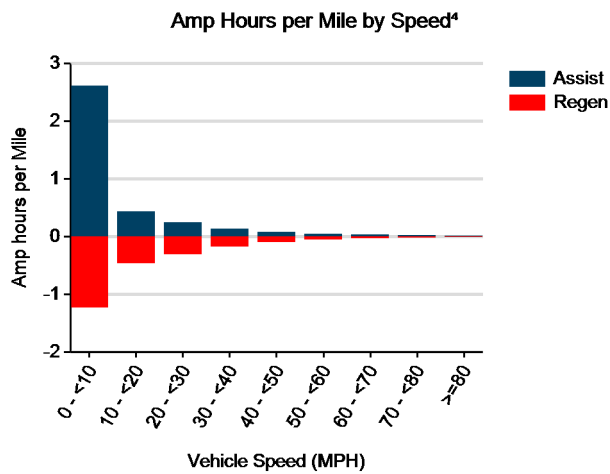
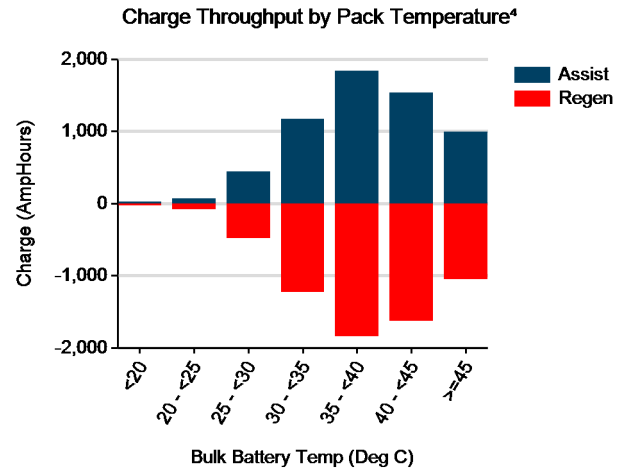
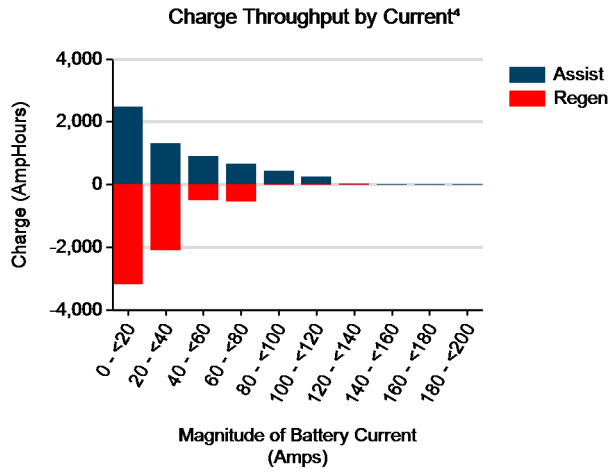


Distribution of Trip Distance<sup>2</sup>



Distribution of Engine Speed When Vehicle is Moving<sup>2</sup>





Total charge into battery pack (Ah)<sup>4</sup>: 6,345  
 Total charge out of battery pack (Ah)<sup>4</sup>: 6,077  
 Battery round trip efficiency<sup>4</sup>: 96%