

POLYMERIC MIRROR FILMS: DURABILITY IMPROVEMENT AND IMPLEMENTATION IN NEW COLLECTOR DESIGNS

SunShot CSP Program Review 2013

April 23-25

DE-FG36-08GO18027

Awardee: 3M

PI: Dr. Raghu Padiyath

Presenter: Dr. Daniel Chen

Acknowledgment: This material is based upon work supported by the Department of Energy under Award Number DE-FG36-08GO18027

This report was prepared as an account of work sponsored by an agency of the United States Government. Neither the United States Government nor any agency thereof, nor any of their employees, makes any warranty, express or implied, or assumes any legal liability or responsibility for the accuracy, completeness, or usefulness of any information, apparatus, product, or process disclosed, or represents that its use would not infringe privately owned rights. Reference herein to any specific commercial product, process, or service by trade name, trademark, manufacturer, or otherwise does not necessarily constitute or imply its endorsement, recommendation, or favoring by the United States Government or any agency thereof. The views and opinions of authors expressed herein do not necessarily state or reflect those of the United States Government or any agency thereof.

Outline

- Background and Objectives
- Technical Approach and Results
- Summary and Key Lessons

- CSP Cost Reduction and Solar Collectors
- Film based Solar Collectors
- Conclusions

Project Objectives and Outcomes

Objectives

- Develop novel optical coatings for silvered polymeric mirrors with PMMA front surfaces
- Contribute to cost reduction in CSP solar field
- Demonstrate manufacturing processes for these optical coatings and incorporate onto mirrors
- Validate the impact of these novel optical coatings in field trials (Abengoa, Gossamer Space Frames)

Expected Outcomes

- Decrease the rate of loss of specular reflectance by 50%
- Decrease the rate of irreversible soiling by 50%
- Reduced frequency of cleaning and O&M costs
- Expand mechanical cleaning options
- Positive impact on LCOE by enabling reflective film based collector designs

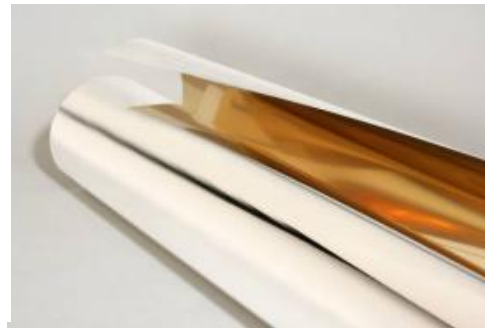
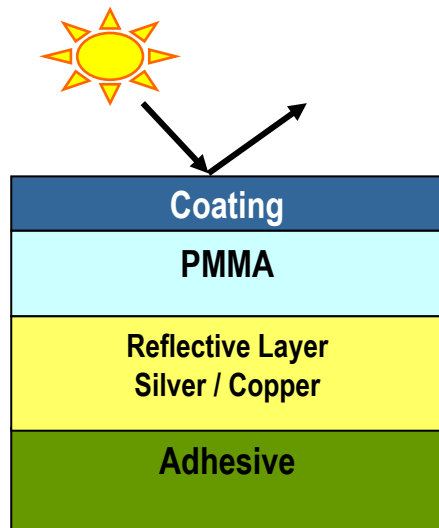
3M Silvered Polymeric Mirrors: Substrates for Coating Development

Description

- Broadband solar reflector based on metalized polymer film
- Silver as reflective layer

Key Features

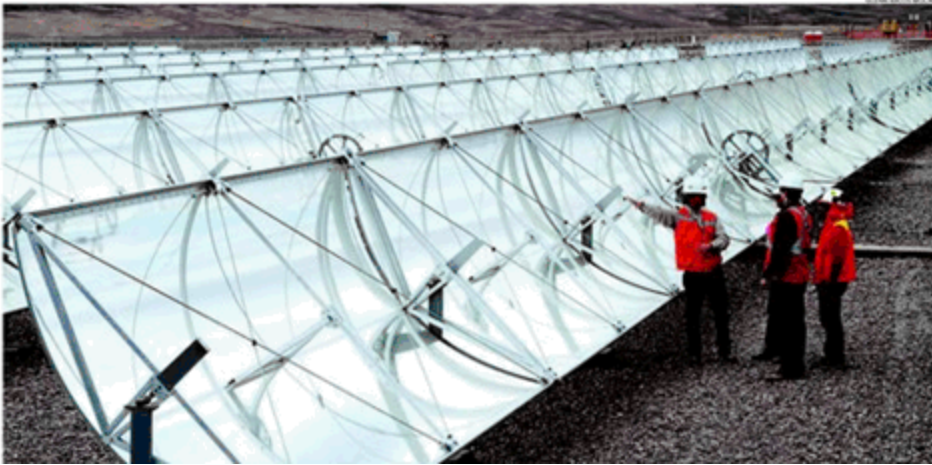
- Film-based reflector enables design flexibility & optimization
- High reflectivity and specularity
- Break resistant
- Low weight
- Scalable manufacturing



Property	3M Solar Mirror Film 1100
Solar Weighted Hemispherical Reflectance (G173)	94.5%
Specular Reflectance at 25 mradian acceptance angle	95.5%

Source: S. Meyen et. al, Standardization of Solar Mirror Reflectance Measurements Round Robin Test, SolarPACES 2010

Projects using Solar Mirror Films



Abengoa Solar, El Tosoro Chile
10 MW thermal
Uses 3M SMF 1100 Mirror Film
Commissioned Fall 2012

Photo Courtesy Abengoa Solar

Abengoa Solar, Englewood, CO USA
1.2 MW thermal
Uses 3M SMF 1100 Mirror Film
Commissioned June 2010

Photo Courtesy Abengoa Solar

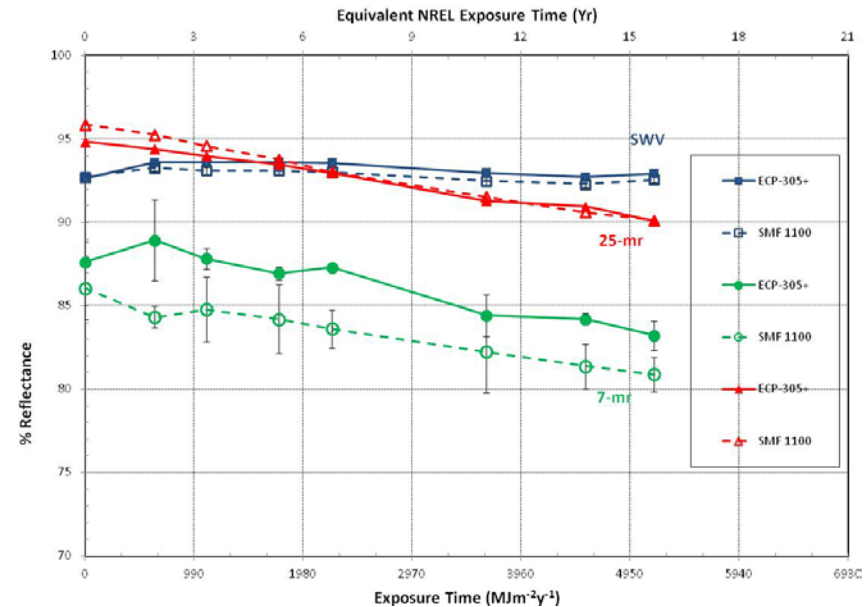


Mirror Films: Key Durability Concerns

- Resistance to UV degradation
- Abrasion resistance
- Interlayer delamination



Courtesy: C. Kennedy, NREL



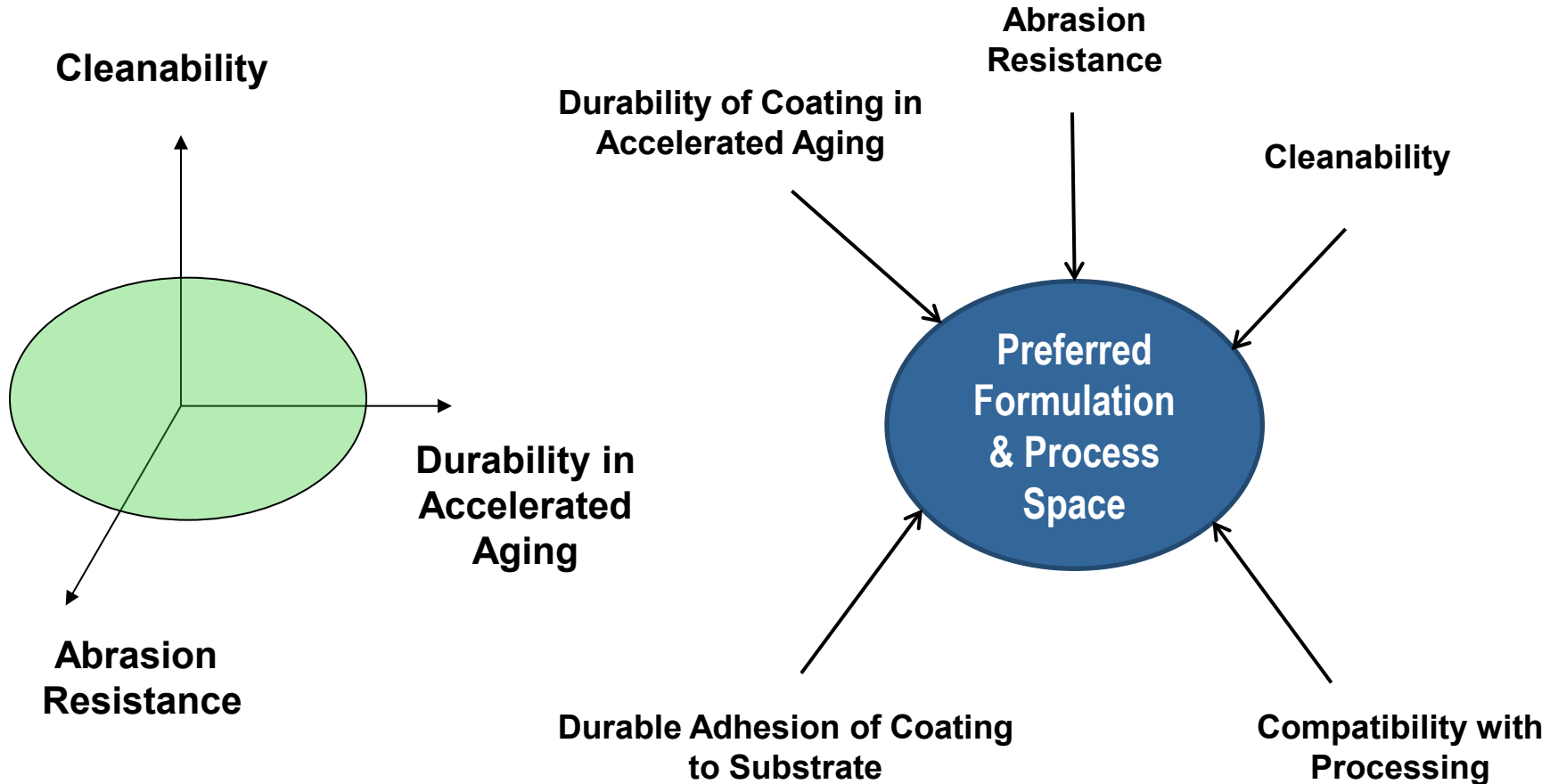
Courtesy: C. Kennedy, NREL

Outline

- Background and Objectives
- Technical Approach and Results
- Summary and Key Lessons

- CSP Cost Reduction and Solar Collectors
- Film based Solar Collectors
- Conclusions

Optimization of Coating Properties

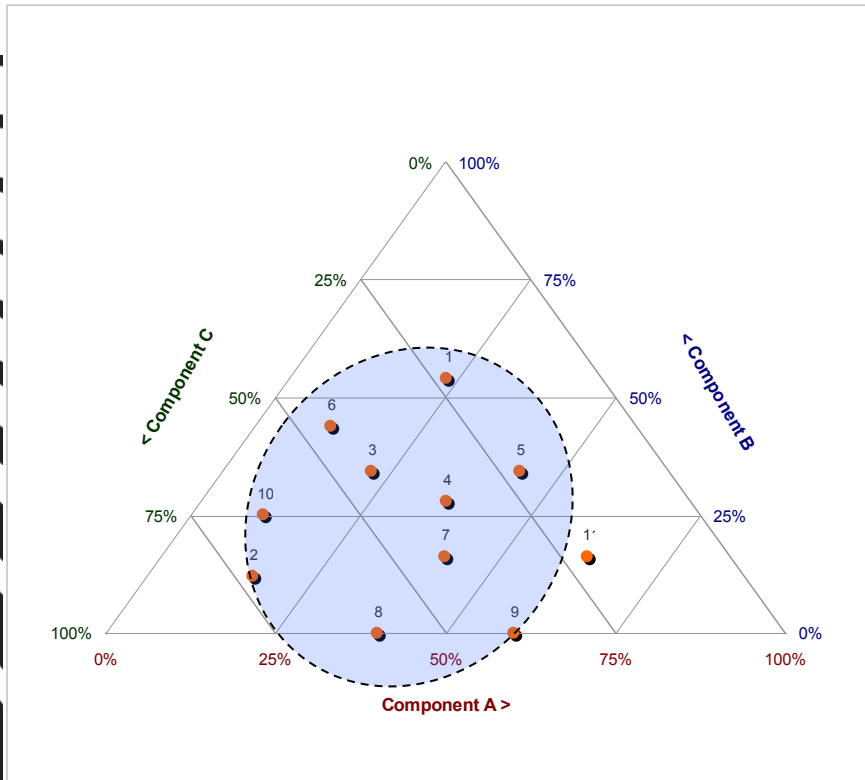


Balancing performance of virgin coatings against durable adhesion and compatibility with processing is critical to durable function

Mirror Durability Considerations

Failure Mode	Root Cause(s)	Impact	Test Methods
Corrosion	Coating failure Edge sealing failure	Mirror graying Loss of reflectivity	Damp heat Outdoor exposure
Abrasion	Installation Windborne sand Low surface hardness	Loss of specularity	Taber abrasion Falling sand
Radiative degradation	Poor UV protection	Hazing Loss of reflectivity	Xenon arc UV exposure Outdoor exposure
Delamination	Low interlayer adhesion Liquid moisture with edge seal failure	Loss in specularity	Water immersion Salt water immersion Outdoor exposure
Yellowing	Chemical interactions	Loss of reflectivity	UV exposure Colorimeter Outdoor exposure
Thermal degradation	CTE mismatch Water intrusion	Delamination	Thermal cycling Freeze-thaw

Technical Approach



Optics



Adhesion



Abrasion
Resistance



UV Resistance



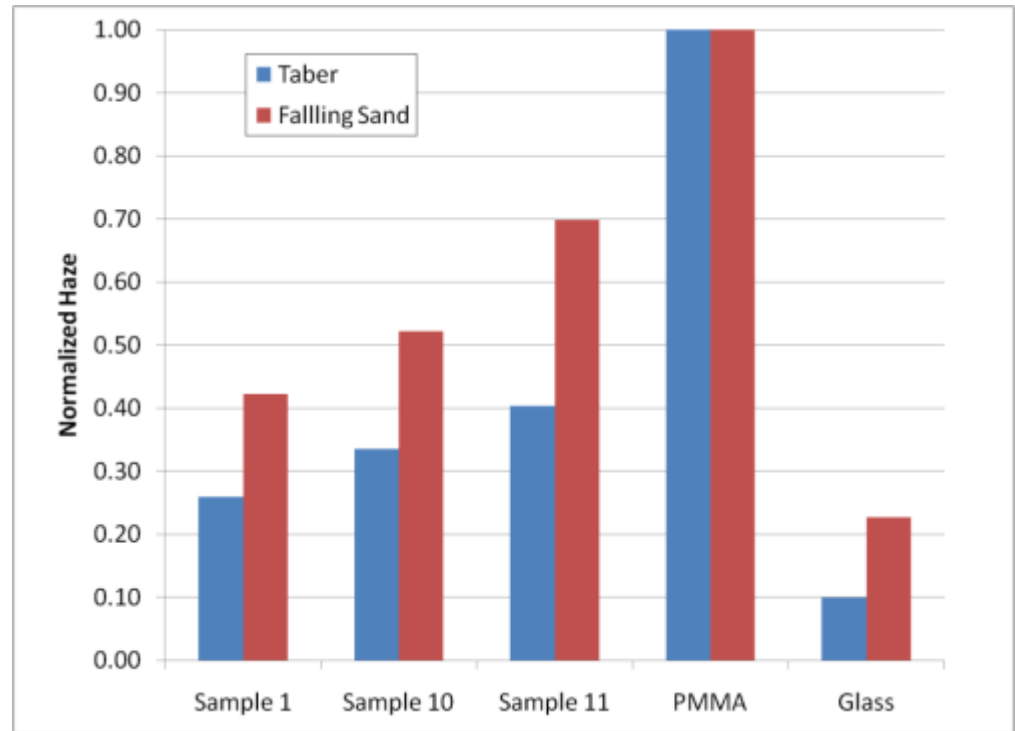
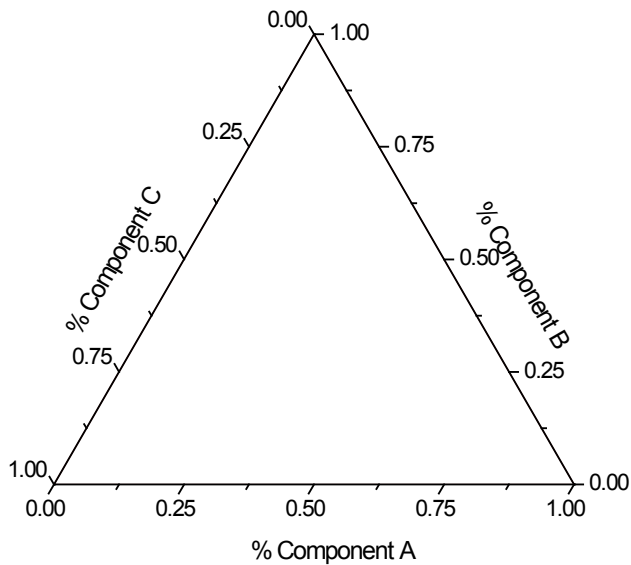
Moisture
Resistance



Thermal
Resistance

Technical approach balances chemistry, durability and weathering to create a reliable solution at optimal cost

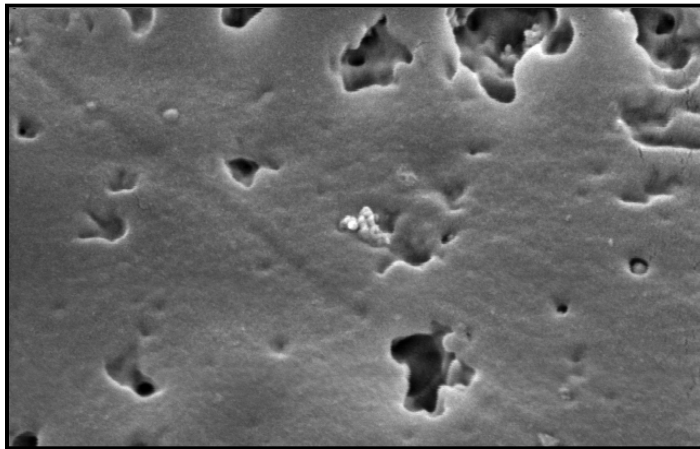
Key Accomplishments: Durable Coatings with Durable Adhesion



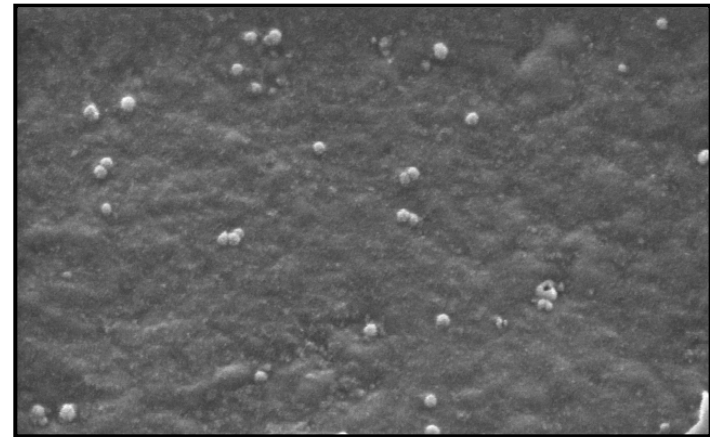
Demonstrated 30-75% improvement in abrasion resistance, retention of performance after >5000 h or accelerated weathering

Key Accomplishments: Durable Coatings with Durable Adhesion

**Surfaces of Weathered Samples
4000 h*, 60,000 x Magnification**



PMMA

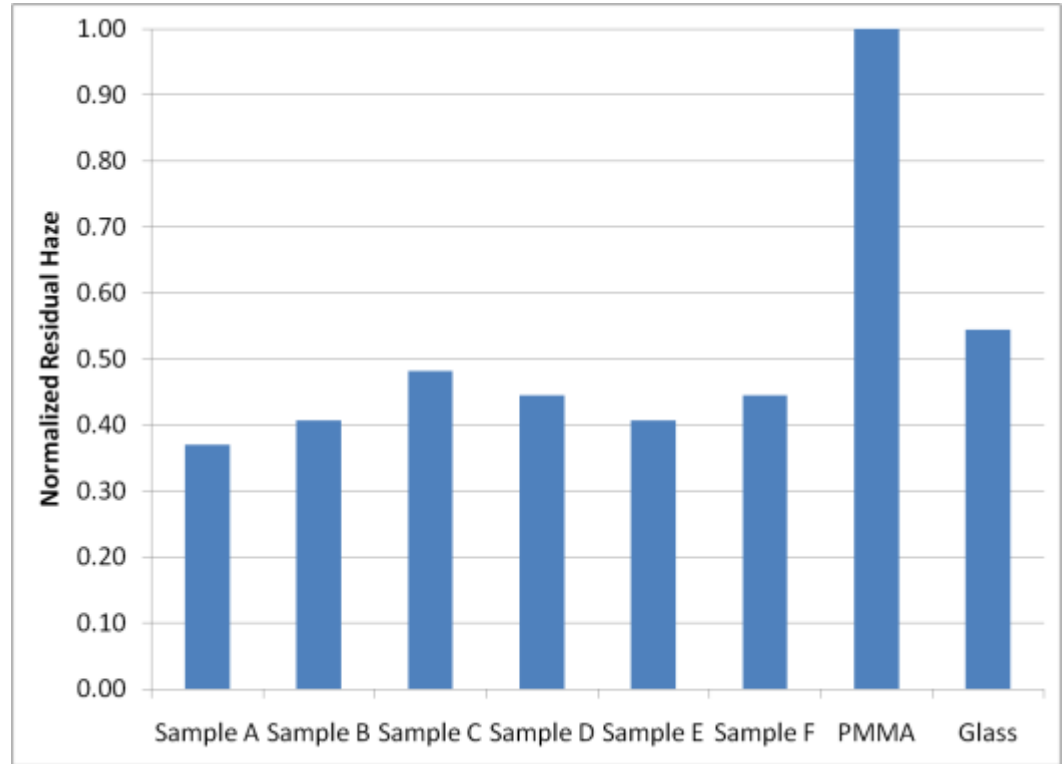
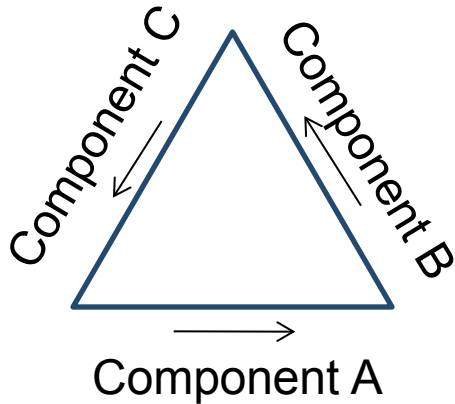


Hardcoated PMMA

Coatings can demonstrate significant improvement in surface durability and uniformity over acrylic surfaces

* 3M Proprietary Exposure Cycle

Key Accomplishments: Coatings with Enhanced Cleanability



**Additives may improve non-contact cleanability relative to PMMA
Retention past 4000 h of accelerated weathering**

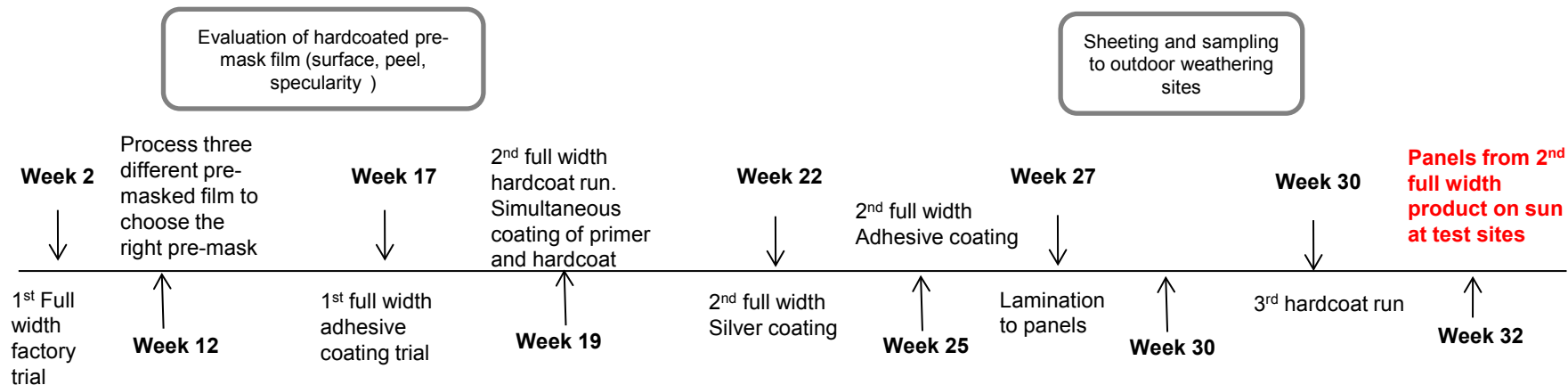
Weathering results on production material

Accelerated Weathering Feb 2013

Sample ID	Test	0 hrs	500 hrs	1000 hrs	1500 hrs	2000 hrs	2500 hrs	3000 hrs	Δ (final – initial)
101027-003	Specularity	93.7	93	93.1	93.4	92.8	93.1	92.7	-1
	THR	92.7	92.6	92.6	92.6	91.9	92.0	91.8	-0.9
101027-004	Specularity	94.2	94	93	93.3	92.9	93.0	92.7	-1.5
	THR	92.7	92.3	92.2	92.6	91.9	92.0	92.0	-0.7
Control	Specularity	94.3	94.1	93.7	NA	93.8	93.5	93.2	-1.1
	THR	94.4	93.9	93.6	NA	93.2	92.7	92.6	-1.8

Scale-Up

- Status
 - Successful scale-up to full width (49")
 - Volume in thousands of linear yards
 - Post processing complete to laminates
- Challenges
 - Web handling
 - Pre-mask adhesion



Outline

- Background and Objectives
- Technical Approach and Results
- Summary and Key Lessons
- CSP Cost Reduction and Solar Collectors
- Film based Solar Collectors
- Conclusions

Hardcoat Project: Summary and Key Lessons

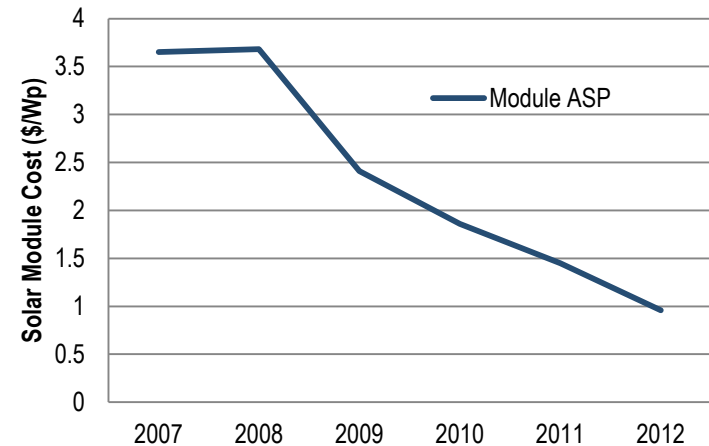
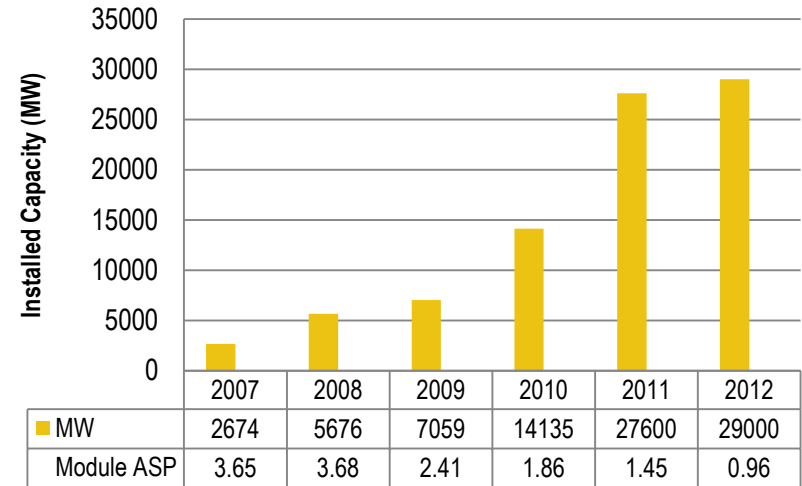
- Summary
 - We have successfully developed coating formulations which significantly increase the abrasion resistance of mirror films
 - We have demonstrated manufacturing scale-up of these films to full width and production volumes
 - Implementation of these films in commercial test sites is planned for Q2 2013 (Abengoa, Gossamer Space Frames)
- Key Lessons
 - Importance of testing and test design
 - Interaction effects in film construction
 - Lab to manufacturing – scale-up, details matter

Outline

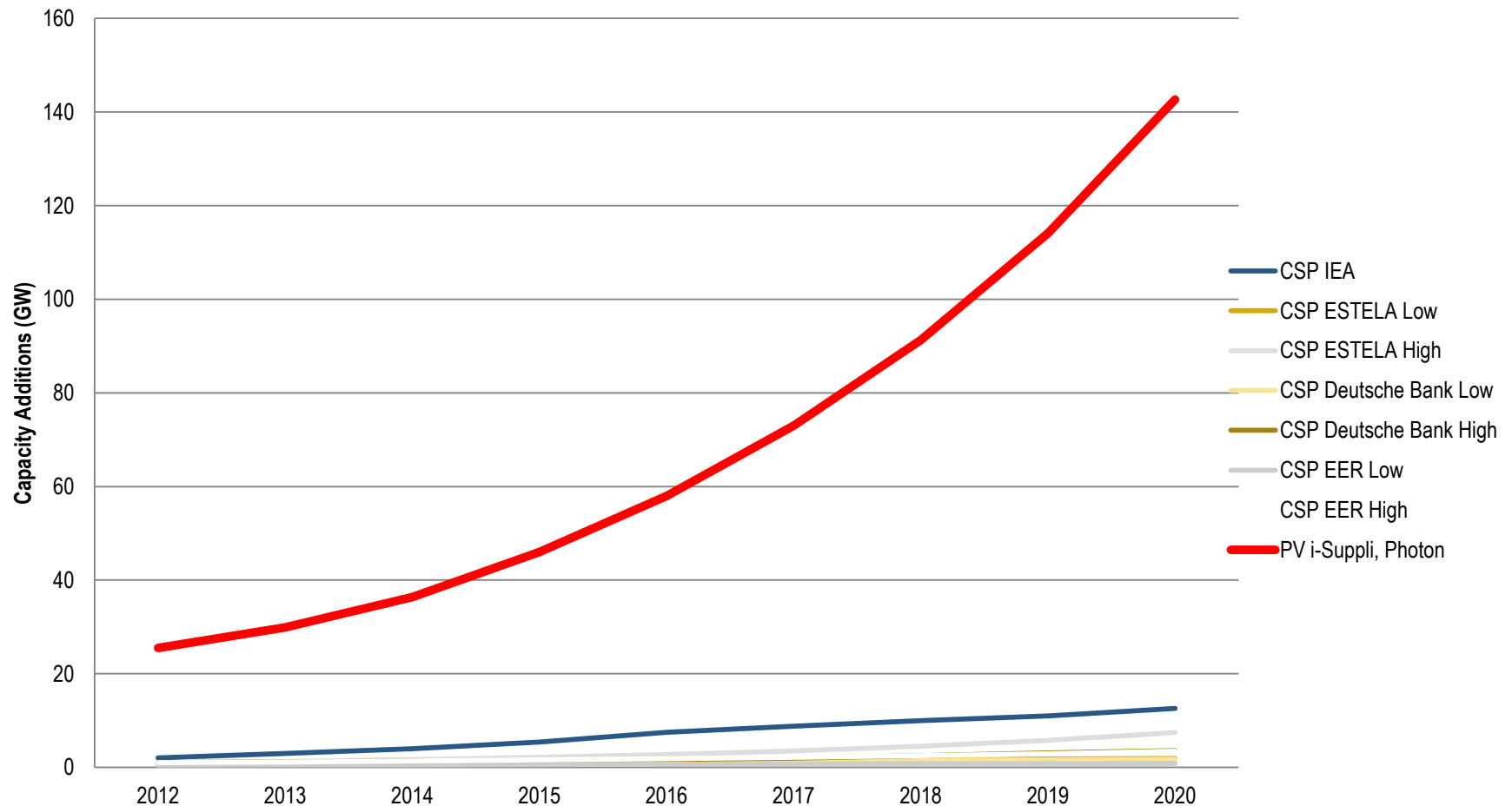
- Background and Objectives
- Technical Approach and Results
- Summary and Key Lessons
- CSP Cost Reduction and Solar Collectors
- Film based Solar Collectors
- Conclusions

Background

- High growth in new solar energy capacity, 10X increase since 2007
- PV dominant, over 90% share
- Cost reduction a key driver, over 70% reduction in PV module pricing since 2007
- CSP – dramatic cost reductions needed to remain competitive
- New solutions for the solar field a key opportunity



Solar Global Market Forecasts

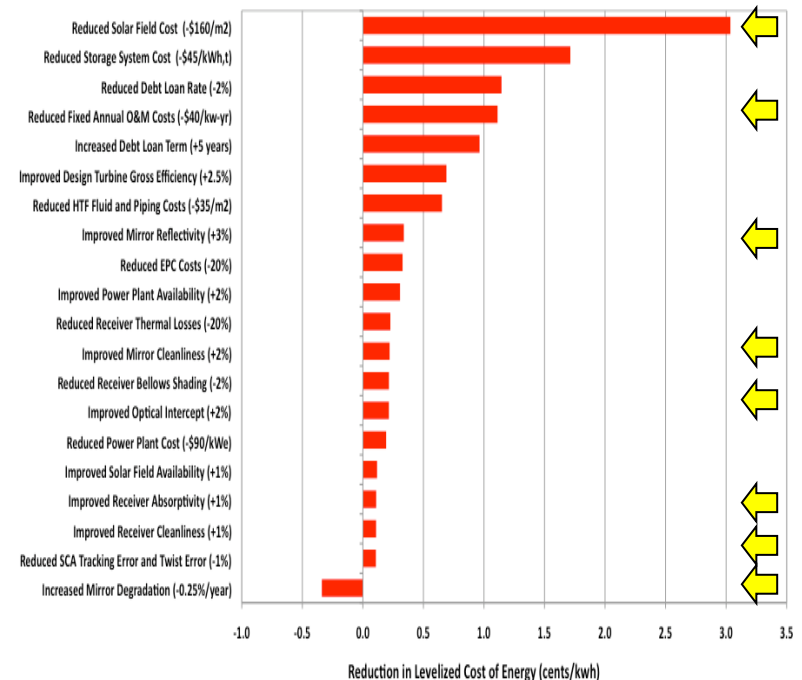
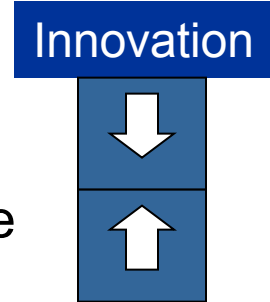


Positive outlook for solar energy in general, but current forecasts has CSP developing into a niche solution

Opportunities for LCOE Reduction

- Lower costs
 - Novel designs – reduced materials
 - Lower cost components
 - Higher volume
 - Easier assembly
 - Reduced O&M costs
- Higher performance
 - Higher optical efficiency
 - Increased structural and shape accuracy
 - Higher operating temperature

$$\text{LCOE} = \frac{\text{Cost}}{\text{Performance}}$$

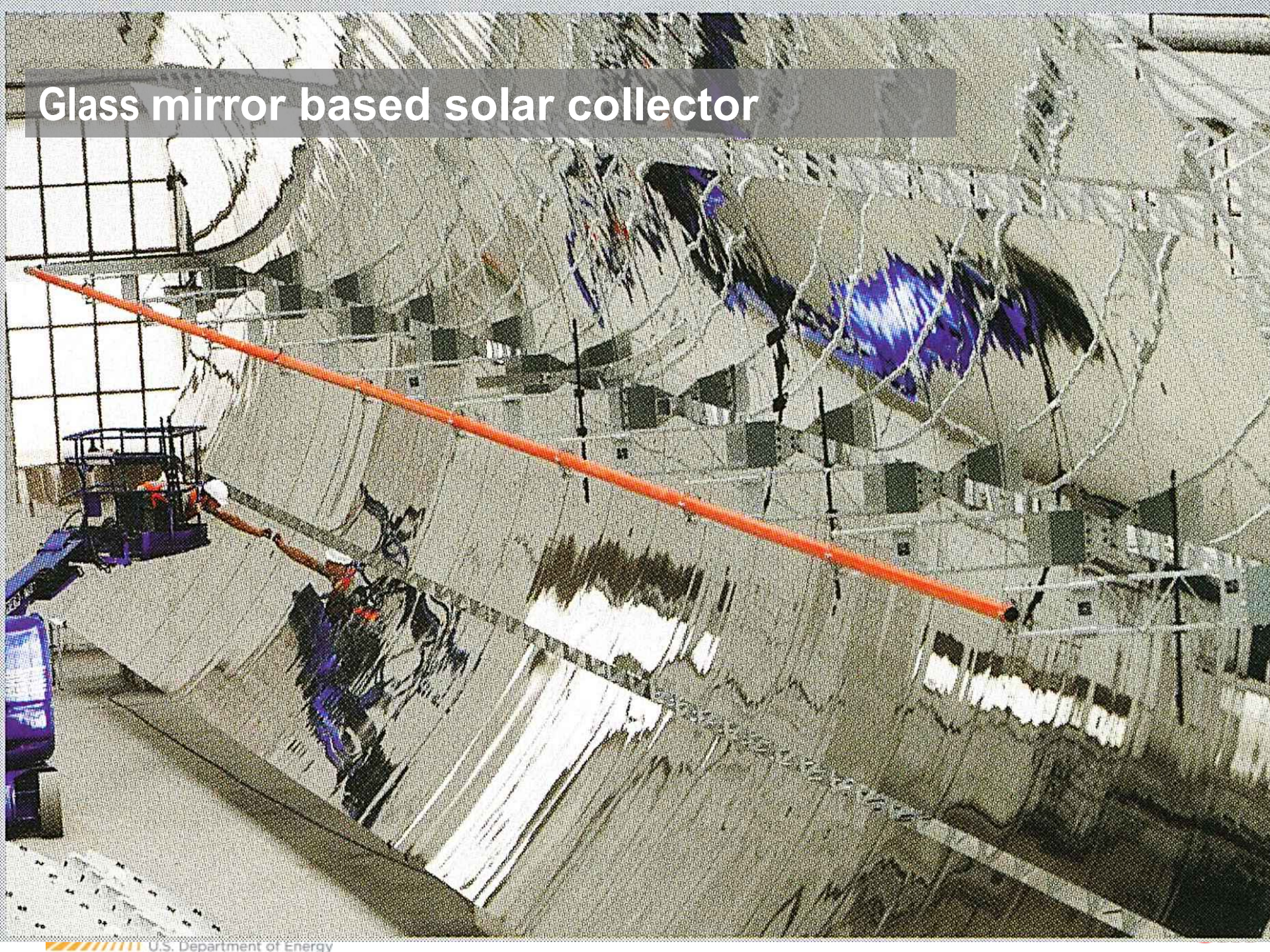


C. Kutscher, M. Mehos, C. Turchi, G. Glatzmaier, T. Moss,
 “Line-Focus Solar Power Plant Cost Reduction Plan”
 NREL/TP-5500-48175, December 2010

Outline

- Background and Objectives
- Technical Approach and Results
- Summary and Key Lessons
- CSP Cost Reduction and Solar Collectors
- Film based Solar Collectors
- Conclusions

Glass mirror based solar collector

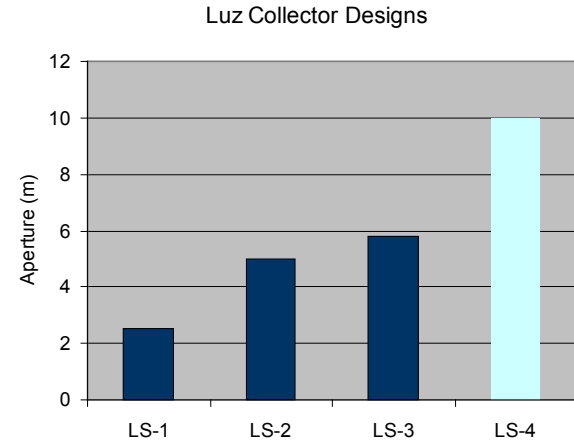


Film based solar collector



Large Aperture Parabolic Trough

- Increasing aperture size leverages other solar field fixed costs
- Luz designs envisioned up to 10m aperture (LS-4). Design had a capital cost target of <\$3000/kWe¹
- Flagsol Heliotrough, 15+% cost improvement for 6.8m aperture design²
- Kolb and Diver estimate up to 15% LCOE reduction going from 5 to 10 m aperture³



Power Plant Size	250 MW	
Heat Transfer Fluid	500 Hitec	
Thermal Storage	16 hours	
SCA Width [m]	5	10
SCA Area [m ²]	470.3	940.6
Average Focal Length [m]	1.8	3.6
Distance between Rows [m]	15	30
Field Aperture Area [m ²]	2,570,000	2,570,000
Total Plant Installed Cost	\$1300 M	\$1148 M
Annual Solar-Electric Efficiency	17.2%	18.3%
Annual Plant Capacity Factor	56%	60%
Nominal LCOE [\$ /kWh]	0.119	0.101
LCOE Improvement		15.1%

(1) P. de Laquill III, D. Kearney, M. Geyer, and R. Diver (in Solar Thermal Electric Technology, 1993)

(2) U. Herrmann, CSP Summit, San Francisco, 2010

(3) G. Kolb and R. Diver, SolarPaces 14, Las Vegas 2008

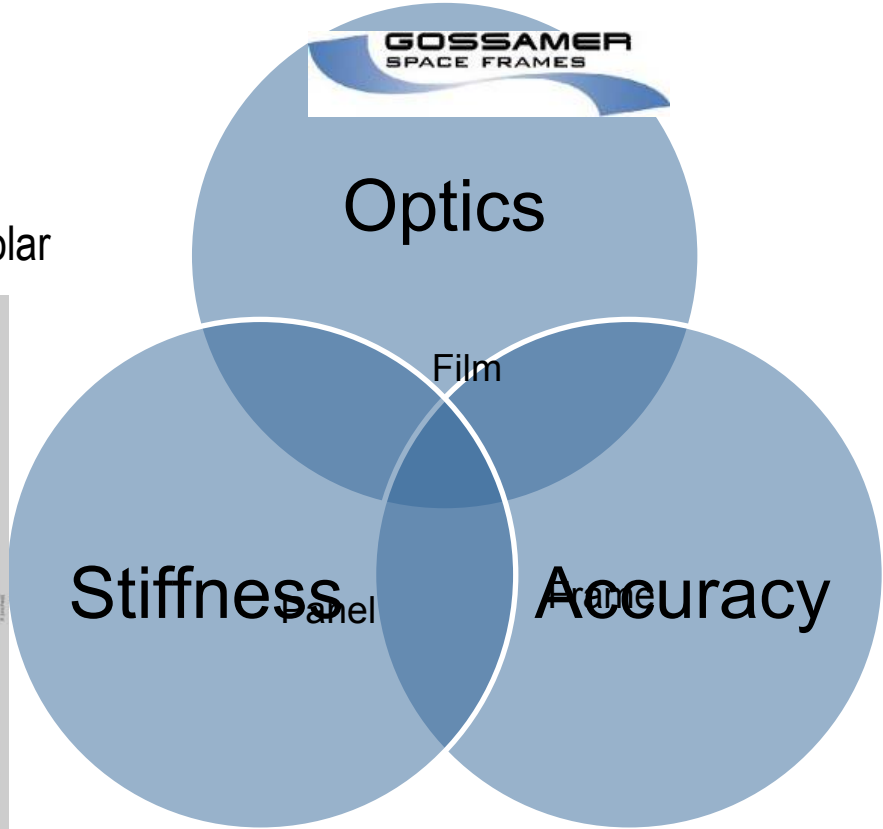
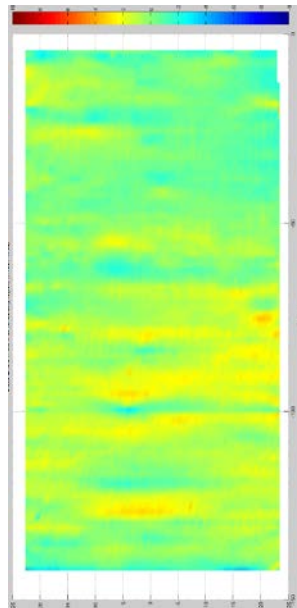
Larger aperture – an established means to reduce cost for parabolic trough CSP

Next Generation Solar Collector Design Approach

- Design Concept
 - Large Aperture parabolic trough
 - High concentration factor (100X +)
 - Increases productivity while minimizing solar field equipment

Elements

- Reflective film
- Panel technology
- Space frame



A. Molnar et al., "A Novel Geometry for the Characterization of Large Mirror-Film Based Panelized Reflectors," SolarPaces, Granada, Spain 2011

Integrated solution approach can address both cost reduction and performance improvement

Large Aperture Trough (LAT) Demonstration Loop

- Description

- Solar Collectors : 12m x 7.3m
- Concentration Factor: 103
- Loop: 16 solar collectors
- Output: 840 kWt / 275 kWe


- Location

- Plant: SEGS I
- Location: Daggett, CA
- Host: Cogentrix



Test Loop – SEGS I



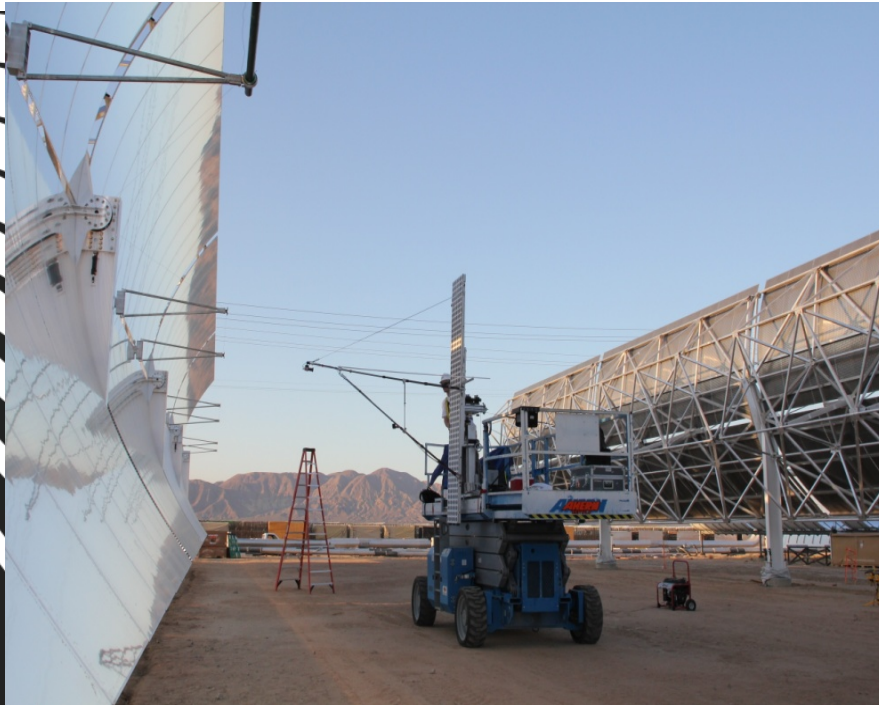
A large parabolic trough solar collector is shown in a desert landscape. The collector consists of a long, curved metal frame supported by a complex network of steel beams and columns. The frame is covered with a series of parallel, reflective parabolic troughs. The sun is shining brightly, creating a strong glare on the reflective surfaces. The background shows a clear blue sky and distant mountains.

Large Aperture Trough (LAT)
Engineered by Gossamer Space Frames and 3M

Parabolic Trough Demonstration Loop
Aperture 7.3m
Concentration factor 103

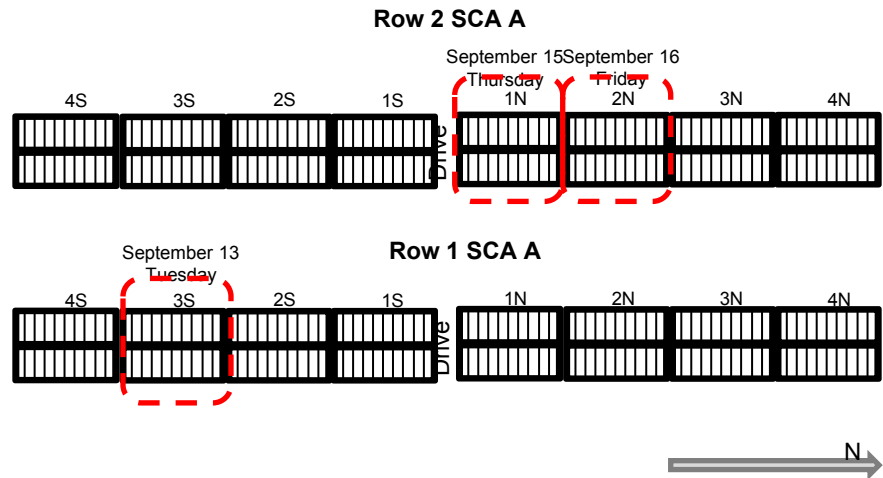
Host
SEGS I - Cogentrix
Daggett, CA (Mohave Desert)

NREL Field Deployed VSHOT



Assumptions

- Errors in the longitudinal direction are neglected.
- The reflective surface has perfect specular reflectance.
- The receiver tube has 100% absorbance.
- A 70 mm receiver tube is modeled without a glass envelope.
- DLR-measured sun shape is used as the source.
- 49,000 rays normal to the aperture are traced.



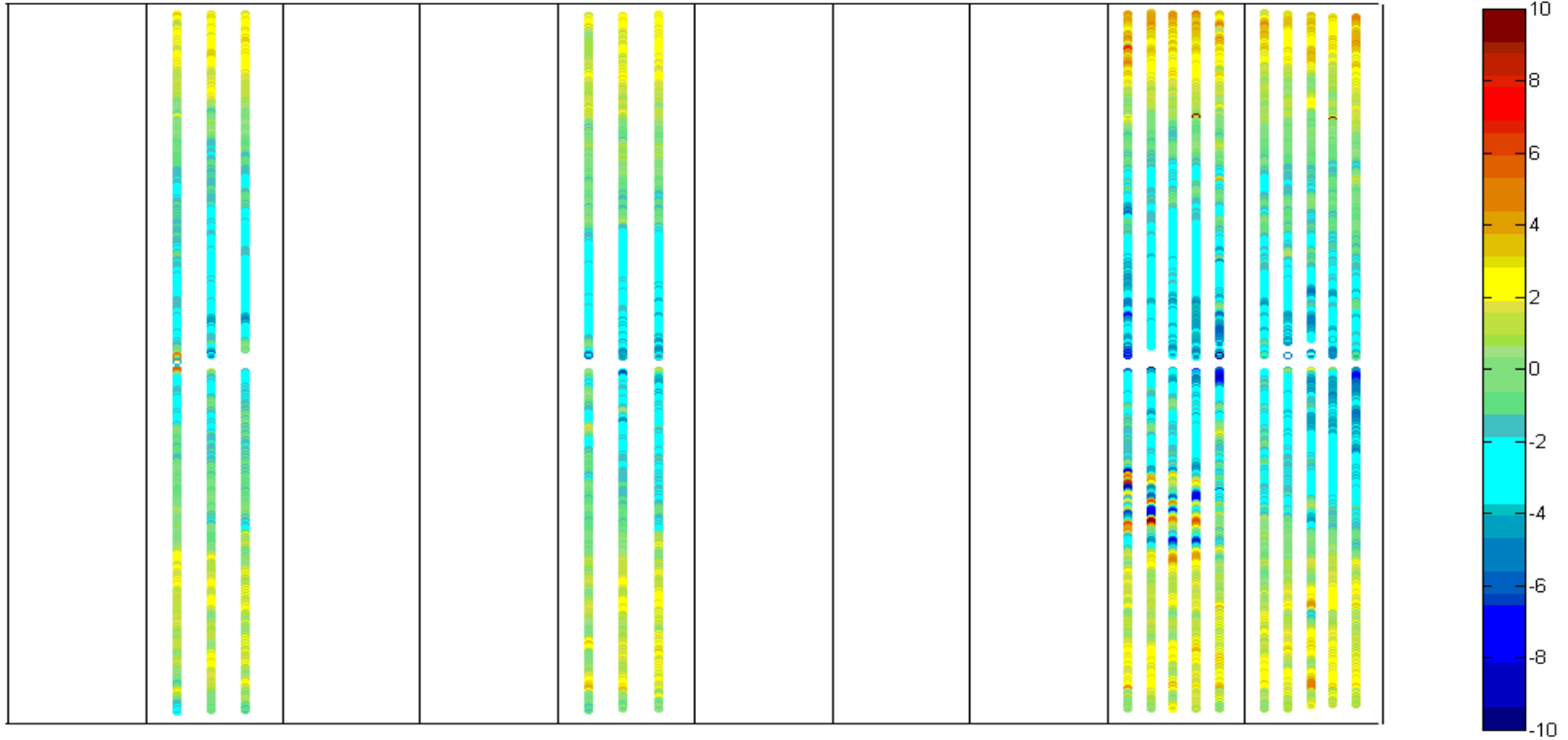
VSHOT Example Results

Panel 9 – 3 scans

Panel 6 – 3 scans

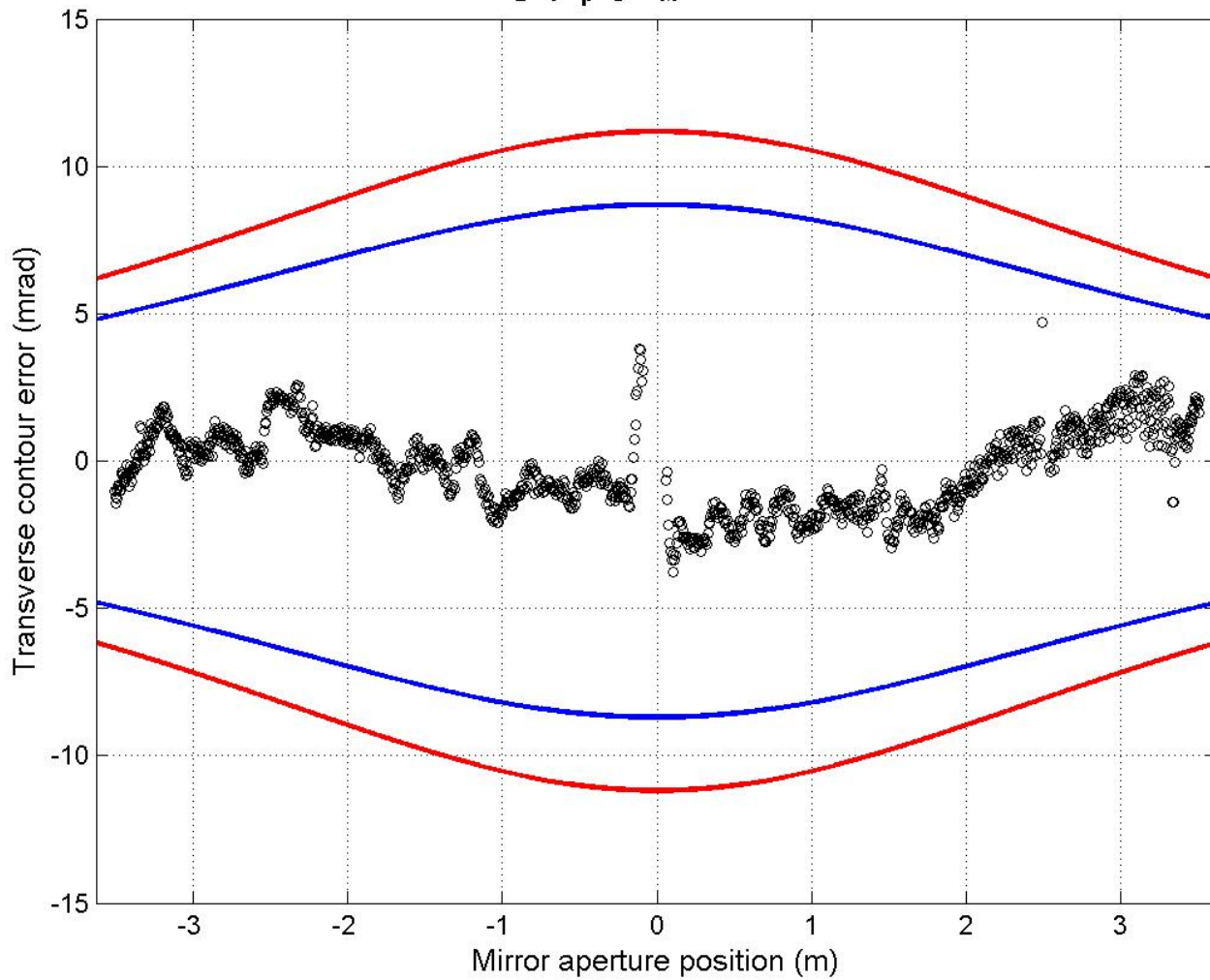
Panel 2 – 5 scans

Panel 1 – 5 scans



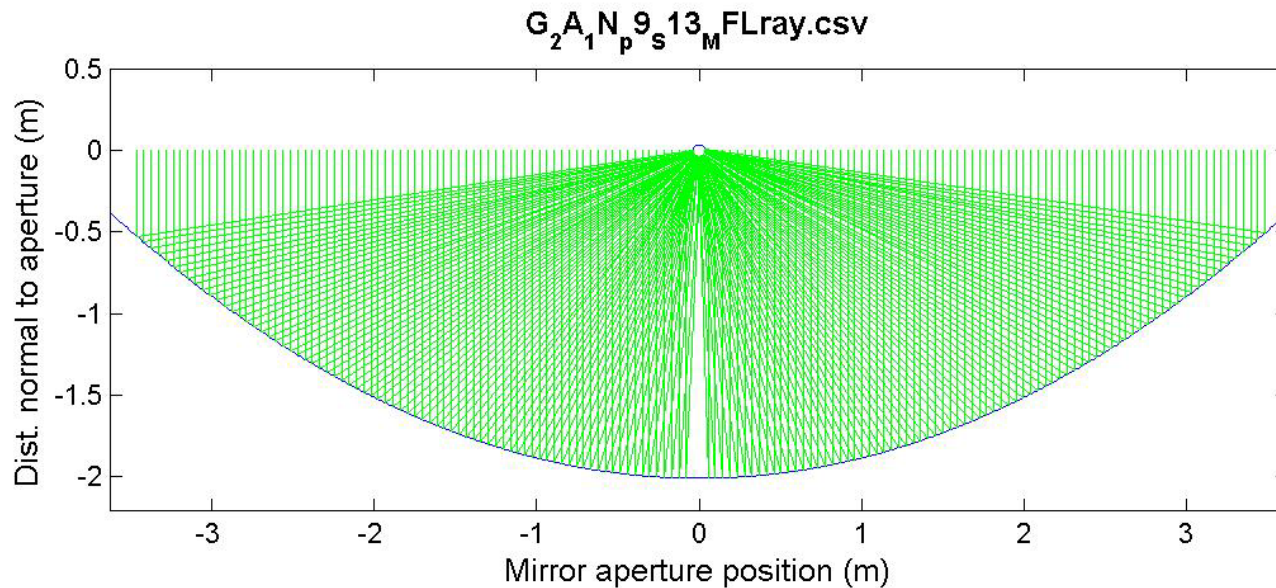
Example Acceptance Window Plot

G₂A₁N₉13_FLray.csv
p_sM



VSHOT Summary Results

SCE	Build Type	Average RMS Slope error (mrad)	Maximum RMS Slope error (mrad)	Minimum RMS Slope error (mrad)	Average Intercept Factor
1A 3S	Standard	3.60	4.22	3.31	95.20%
2A 1N	Modification 1	2.45	3.51	1.45	98.80%
2A 2N	Modification 2	2.27	2.77	1.74	99.30%



8m Aperture Trough



Courtesy: G. Reynolds, Gossamer Space Frames

Mirror Films: Heliostat Applications

- Background
 - Work driven by Sandia National Labs (Cliff Ho)¹
 - Mirror films typically not thought of as feasible for long focal range designs
- Objectives
 - Determine feasibility of mirror based heliostats
 - Explore new heliostat design options with mirror films

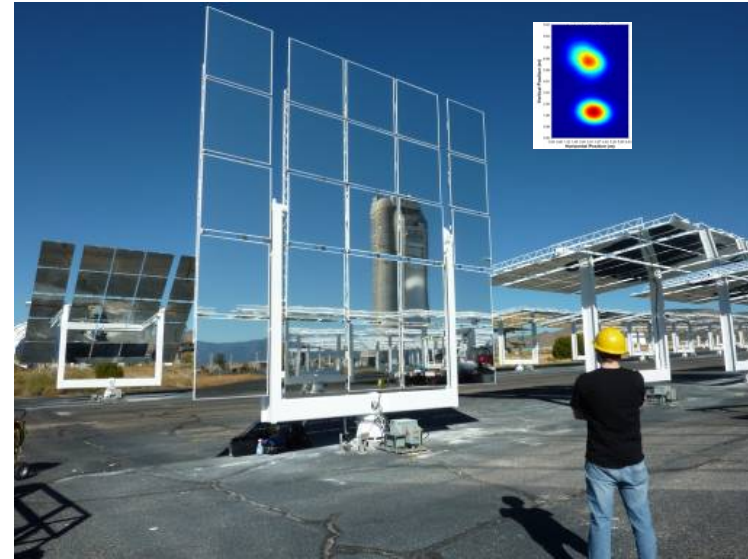
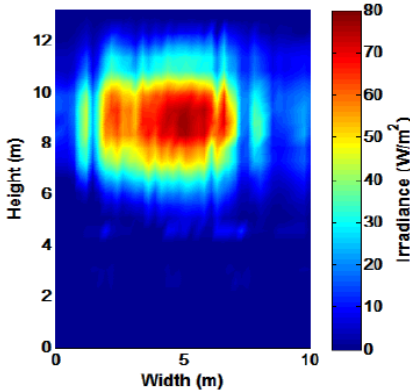


Figure 2. Left: Map showing the locations of the single-facet beam tests at 525 m and 1733 m away from the long-range heliostat target (LRHT). Right: Rig used to hold and track the facets.

“Characterization of Metallized Polymer Films for Long-Distance Heliostat Applications,
C. Ho, J. Sment, J. Yuan, C. Sims, SolarPACES 2012, Marrakech, Morocco, Sept 2012

Comparison: Glass vs Mirror Film Facets

Flux Map at 512m, Glass: 27-Jul-2012 13:46:34
Peak Flux = 77.3 W/m² DNI = 931 W/m²



Flux Map at 512m, Film: 27-Jul-2012 13:56:34
Peak Flux = 80.8 W/m² DNI = 937 W/m²

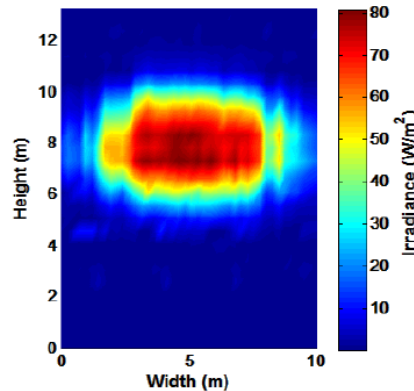
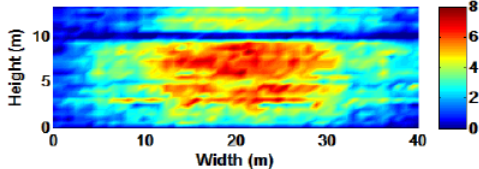


Figure 5. Measured irradiance distribution at ~500 m from the silvered glass facet (left) and the SMF1100 facet (right). The peak flux in both cases is ~80 W/m².

Flux Map at 1733m, Glass: 30-Jul-2012 15:11:34
Peak Flux = 8.0 W/m² DNI = 896 W/m²



Flux Map at 1733m, Film: 30-Jul-2012 14:43:56
Peak Flux = 7.2 W/m² DNI = 897 W/m²

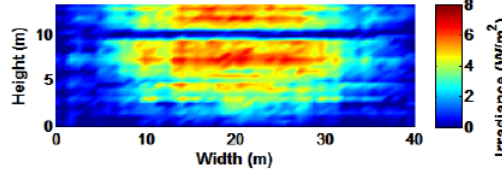
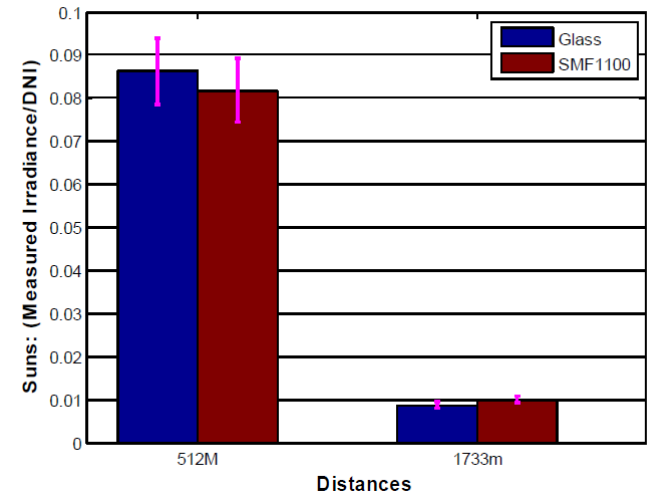


Figure 8. Measured irradiance distribution at ~1700 m from the silvered glass facet (left) and the SMF1100 facet (right). The peak flux in both cases is ~7-8 W/m².



Current commercially available reflective films have potential for long focal length applications

Outline

- Background and Objectives
- Technical Approach and Results
- Summary and Key Lessons
- CSP Cost Reduction and Solar Collectors
- Film based Solar Collectors
- Conclusions

Conclusions

- CSP
 - Solar Energy growing into a significant energy source globally (10X growth in 5 years)
 - CSP needs dramatic cost reduction in order to remain relevant
- Mirror Films
 - Mirror films enable new design space in solar collectors
 - Larger aperture parabolic trough collectors offer opportunity for cost reduction – reduced to practice at demonstration loop level
 - Feasibility of mirror films for long distance heliostats demonstrated
- Future Work (DE-EE005795 – 3M / Gossamer / Sandia / NREL)
 - New reflective films with higher SWTHR and specular reflectance
 - Advanced heliostat and solar collector design

Acknowledgments



Cogentrix

Cogentrix – S. Frymeyer, K. Anderson, R. Lawrence, K., Koele



Gossamer Space Frames – G. Reynolds, D. Hackbarth, G. Curtis, R. Vezzuto



National Renewable Energy Lab – C. Kennedy, A. Gray, M. Gray



Sandia National Lab - Cliff Ho



3M – R. Charles, S. Clear, D. Hart, A. Molnar, E. Peterson, T. Solin

감사합니다 Natick
Grazie Danke Ευχαριστίες Dalu Obrigado
Thank You Köszönöm
Tack
Спасибо Dank Gracias
谢谢 Merci Seeé
ありがとう

3M ECP 305+ Long Term Outdoor Exposure (NREL)

