



Portsmouth Paducah
Project Office

Portsmouth Site D&D Project

M. Judson Lilly,
Federal Project
Director





Gaseous Diffusion Plants in America



East Tennessee Technology Park



Portsmouth Gaseous Diffusion Plant



Paducah Gaseous Diffusion Plant

East Tennessee Technology Park

Operated: 1943 – 1985
Cleanup began in 1989

Portsmouth GDP

Operated: 1954 – 2004
Cleanup began in 1989

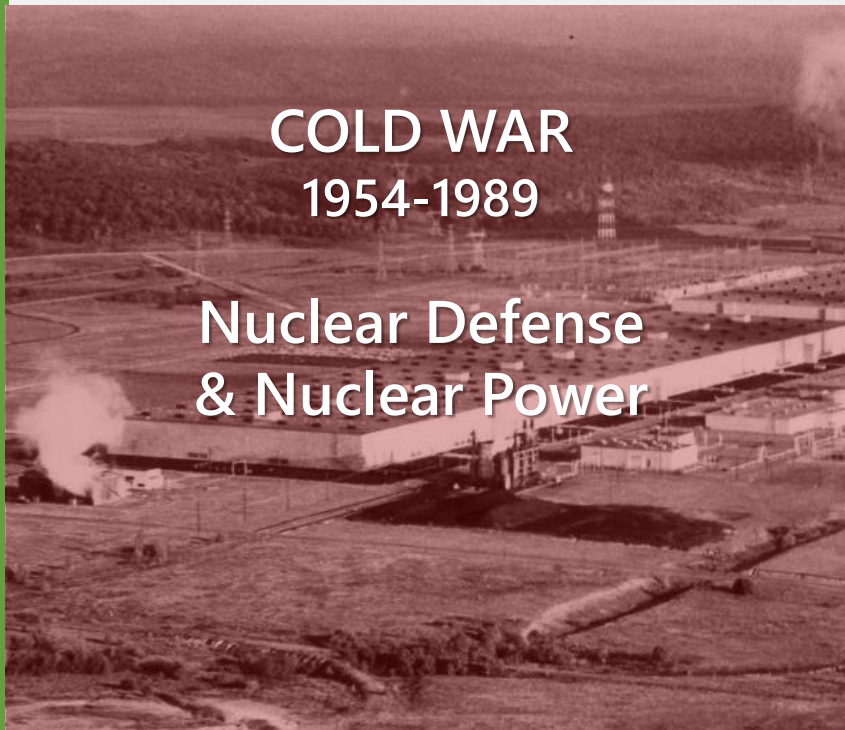
Paducah GDP

Operated: 1952 – 2013
Cleanup began in 1988



Portsmouth GDP Timeline

- ▶ The Portsmouth Gaseous Diffusion Plant was constructed from 1952-1956
- ▶ The Portsmouth site was the last of the nation's three GDPs
- ▶ Enriched uranium for the nation's nuclear weapons program and later for commercial nuclear reactors



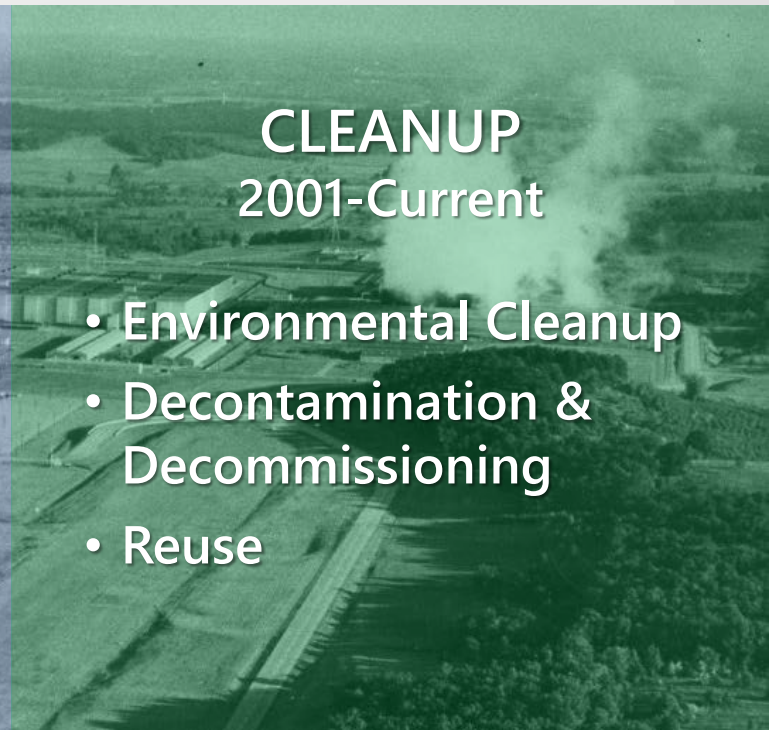
COLD WAR
1954-1989

**Nuclear Defense
& Nuclear Power**



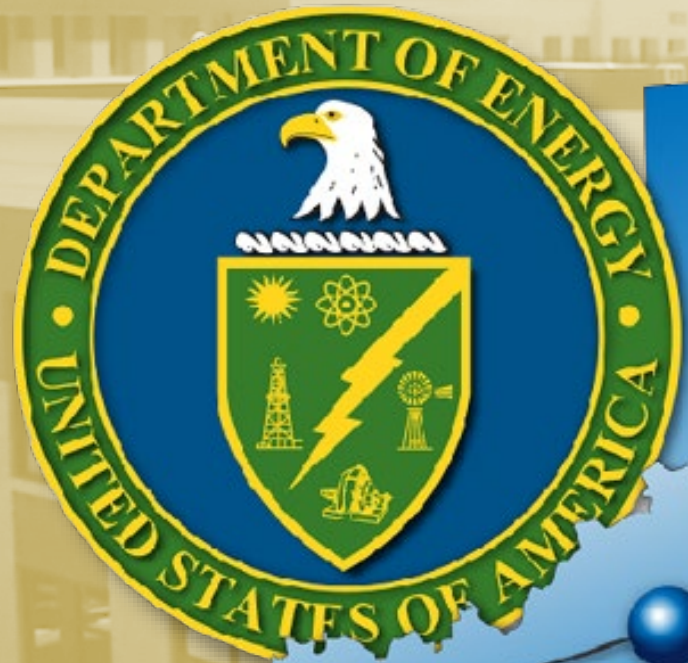
POST COLD WAR
1989-2001

**Commercial
Nuclear Power
& Environmental
Cleanup**



CLEANUP
2001-Current

- Environmental Cleanup
- Decontamination & Decommissioning
- Reuse





Key to Success:

Integration of

- ▶ Waste Disposal
- ▶ Demolition
- ▶ Soil Excavation





X-326 Process Building Demolition



**X-326
Pre-Demolition
08/05/11**



**X-326
Demolition Complete
01/31/24**



**X-326
Demolition
10/19/21**



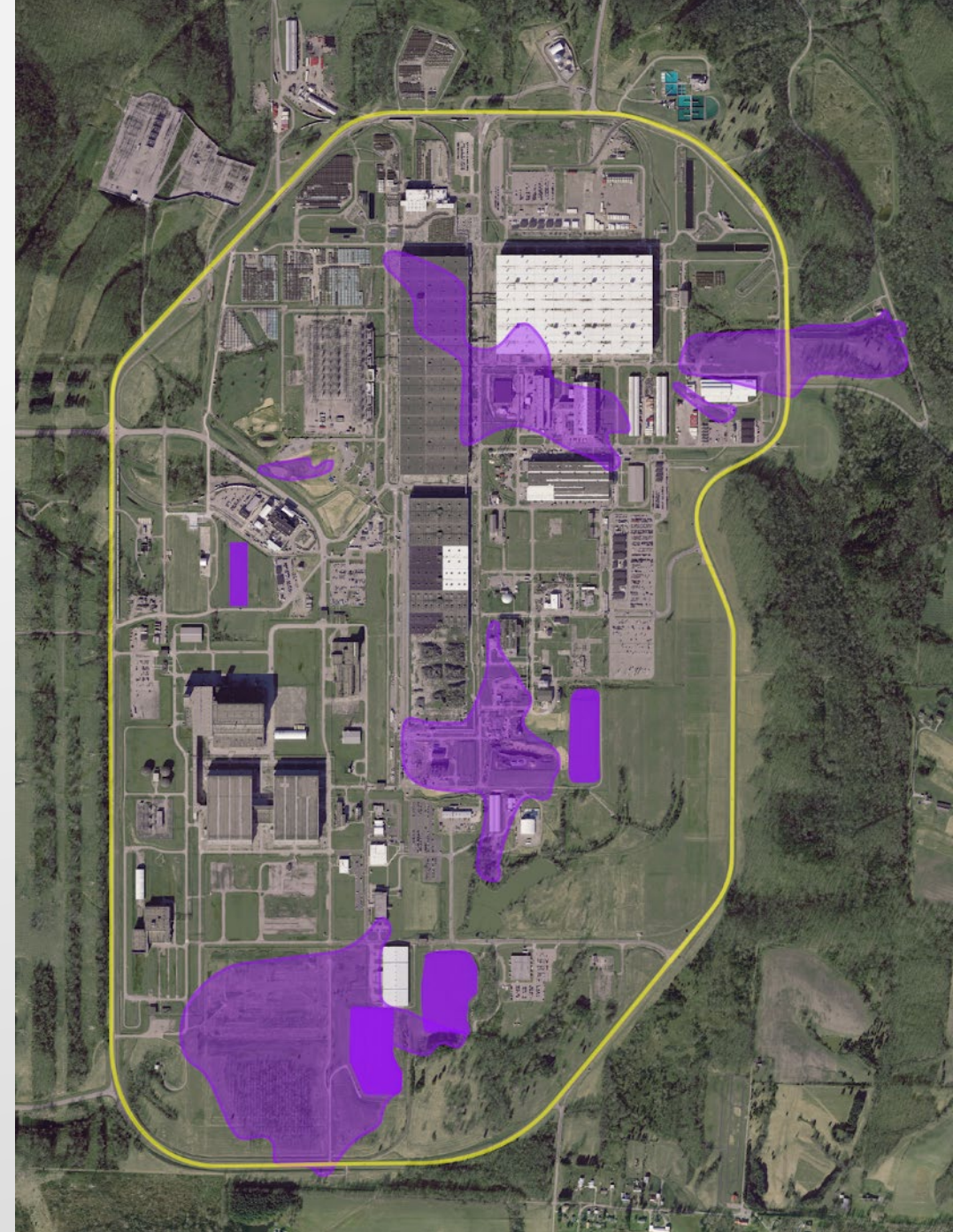
X-326 Demolition Team





Landfills and Plumes

- ▶ Excavation of previously closed landfills and plumes to use as fill for the OSWDF
- ▶ Unique regulatory approach to provide up 1000 contiguous acres for future reindustrialization





Soil Excavation for Engineered Fill at OSWDF





OSWDF Construction and Operation



- ✓ Waste Placement in Cells 1, 4, and 5
- ✓ 21 acres of waste disposal capacity
- ✓ 32-acre soil management area



OSWDF CAP-2 Construction



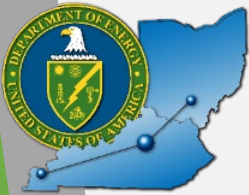


Upcoming D&D Projects

Portsmouth Process Building
Demolition Sequence:

X-326 ► X-333 ► X-330





Promising Future for Site Reuse

- ▶ Over 300 acres transferred
- ▶ Property transfers conducted through Community Reuse Organization, Southern Ohio Diversification Initiative (SODI)
- ▶ Trillium H2 Power, LLC recently purchased the initial 80 acres from SODI for a 250-acre h₂Trillium Energy and Manufacturing complex

Parcel Transfers	Acres	Status
Parcel 1	80 acres	Transfer complete
Parcel 2	226 acres	Transfer complete
Parcel 3	48 acres	Transfer Package is under development
Parcel Request	TBD	Received request for property from SODI

