

Citizen Potawatomi Nation



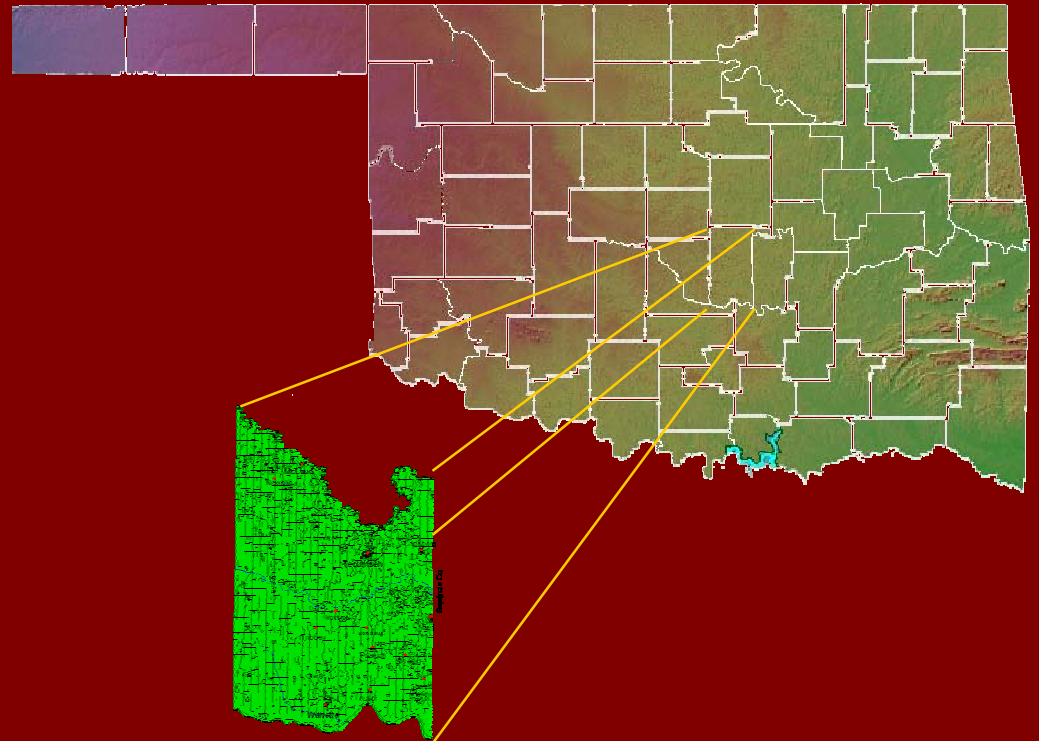
John A. Barrett, Jr. – Chairman

Linda Capps – Vice Chairman

D. Wayne Trousdale – Secretary/Treasurer

Located in Shawnee, Oklahoma

- **Citizen Potawatomi purchased allotment lands consisting of a small 900 square mile parcel**
- **The largest part of the Potawatomi made their way to the new reservation in the 1880s.**





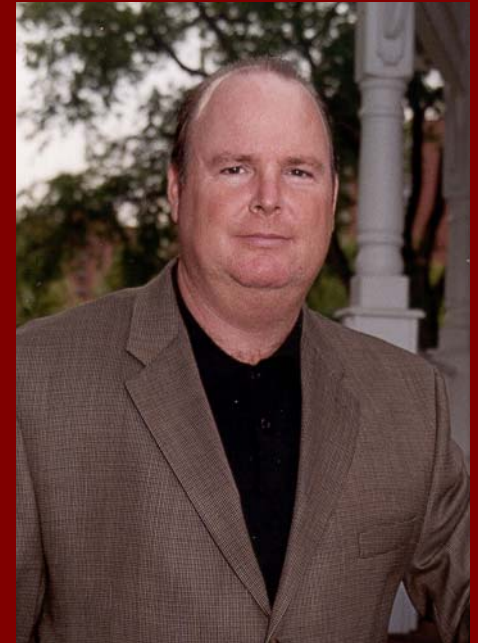
Tribal Leadership



John A. Barrett, Jr.
Chairman



Linda Capps
Vice Chairman



D. Wayne Trousdale
Secretary/Treasurer

Economic Impact

2002 Community Impact = \$73,087,828



CPN Employee Salaries/Benefits	\$22,797,063
Federal & Tribal Programs	\$17,579,096
Enterprise Expenditures	\$32,711,669
Annual Economic Impact	\$73,087,828

2001 Community Impact = \$56,642,420
2000 Community Impact = \$48,006,270

CPN Headquarters



The Tribal Administration Building houses:

- Administrative Offices
- Enterprise/Tribal Accounting
- Tribal Rolls
- Employment and Training
- Cultural Resources
- Child Development Center
- Office of Self Governance
- Title VI Elderly Program
- Human Resources
- Purchasing
- Networking
- Occupied February 1998

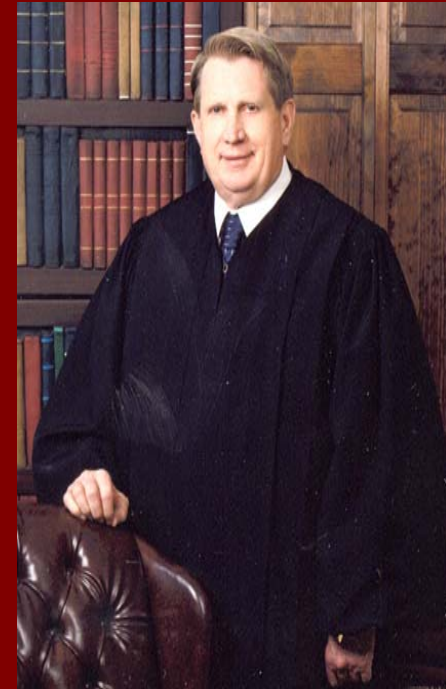
Citizen Potawatomi Population



CPN Tribal Member Densities based on 5 Digit ZIP Codes

Tribal Court

- In operation since 1986
- Seven Supreme Court Justices
- Three district court judges
- One prosecuting attorney
- One public defender
- One court clerk
- Jurisdiction over any Citizen Potawatomi - anywhere
- Civil jurisdiction over non-Indians.



Citizen Potawatomi Nation Tribal Government Structure



Jurisdictional Programs and Activities



Health Complex

Clinic ~ Pharmacy ~ CHRs

Contract Health ~ Optometry

Dental ~ Audiology

Behavioral Health ~ Substance Abuse

FireLake Wellness Center



Child Development Services

Child Care Center
After School Program



First National Bank & Trust Co. of Shawnee

Main Bank



FireLake Branch



With solid earnings performance for the past six years, First National Bank is the fastest growing bank in Shawnee and the community's *only* locally owned bank.

FNB/Holdenville



FireLake Golf Course



FireLake Casino



Potawatomi Gift Shop



FireLake Farms

1,200 Acres (Approx.)
1 Full-time employee
Best suited for agriculture
production

- Hay
- Horticultural Produce
- Field Crops





One acre produced 18,000 lbs. of sweet potatoes, 100-150 lbs of okra, 200 cantaloupes, 150 watermelons, 100 lbs of squash, & 100 bushels of peas.



FireLake Discount Foods





FireLake Discount Foods



Regional Tribal Functions

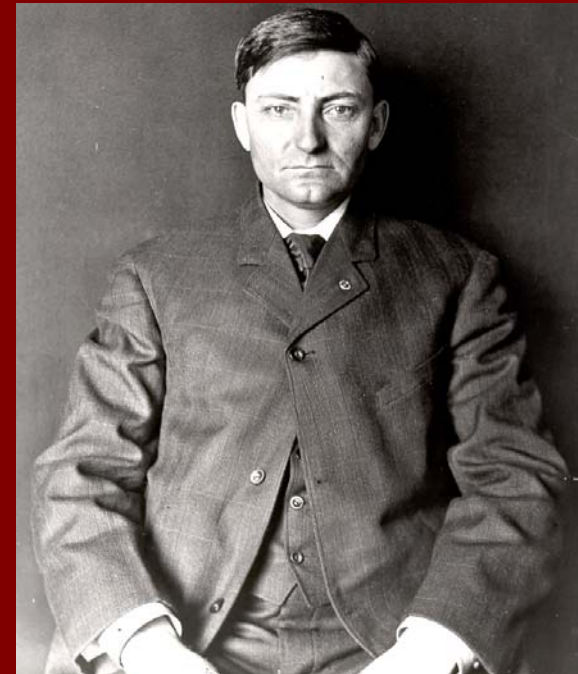


- To provide tribal members an opportunity to interact with tribal officials
- To assimilate and distribute information to the regional members
- Only tribe in the United States that hosts regional meetings

The first regional council meeting was held in 1984.

Tribal Rolls

- Enrollment
- Genealogy Research
- Provide and maintain photo ID cards
- Tribal Scholarships
- Burial Insurance Program



Mail-Order Pharmacy

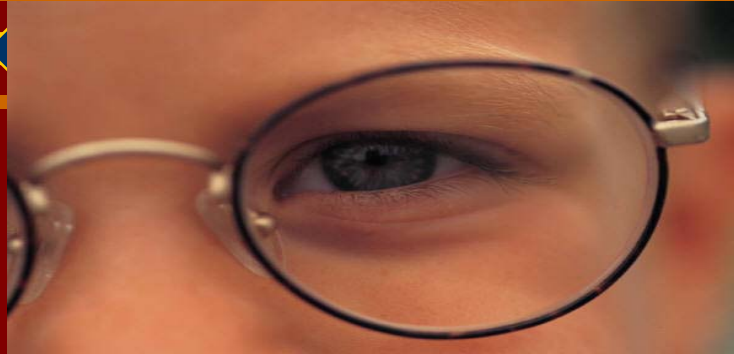


- **Plan A – Tribal members 63 OR OLDER. CPN will pay 100% of the cost for drugs on the formulary**
- **Plan B – Tribal members YOUNGER THAN 63. 100% co-pay by tribal member.**



Health Aids Foundation

- Eyeglasses
- Contacts
- Hearing Aids
- Dentures
- Partials
- Bridges
- Prosthetic devices



**Must have been born by June 29, 1961 or be at least
1/8 Citizen Potawatomi**

Scholarships and Educational Programs

- **Nishwamen Scholarship at St. Gregory's University**
- **Tribal Scholarships**
- **Higher Education**
- **Housing Allowance**
- **All programs have strict deadlines**



CPN Housing Authority

- **Emergency rehabilitation loan program**



- **Down payment and closing cost assistance grant**

Cultural Resources

- **Preserve Potawatomi Culture**
- **Language Classes**
- **Historic Preservation**
- **Archaeology**
- **Coming Soon Online Resources**



Family Reunion Festival

June 27-29, 2003



Reunion Families

2004: Clardy, Frapp,
Kahdot, Juneau, Pappan,
Crumbo



Project Overview



The Citizen Potawatomi Nation seeks to create long-term energy strategies, explore development of tribal utilities, and analyze renewable energy and energy efficiency options.

Objective One



Conduct planning sessions with the Citizen Potawatomi Nation Strategic Energy Planning Team. The goal is to set a baseline assessment and create an energy vision.

Team Members



CPN Chairman – Mr. John A. Barrett Jr.

CPN Vice Chairman – Ms. Linda Capps

CPN Secretary-Treasurer – Mr. D. Wayne Trousdale

Deputy Administrator – Mr. Bob Trousdale


Director/Self-Governance – Ms. Rhonda Butcher

Project Coordinator – Mr. Art Muller

CDIF Director – Ms. Kristi Coker


Housing Authority Director – Mr. Bob Carlile

Objective Two



Conduct an analysis of energy efficiency opportunities to reduce overhead and increase the efficiency of energy consuming devices, improve design of the overall system, switch to a more efficient system, improve control of the system, improve maintenance, and reduce energy demand in Citizen Potawatomi Nation buildings.

Objective Three



Conduct analysis and study feasibility of biomass and geothermal resources, propane and natural gas distribution systems, and the future of hydrogen and fuel cells for production, transportation, and storage of large quantities of energy.

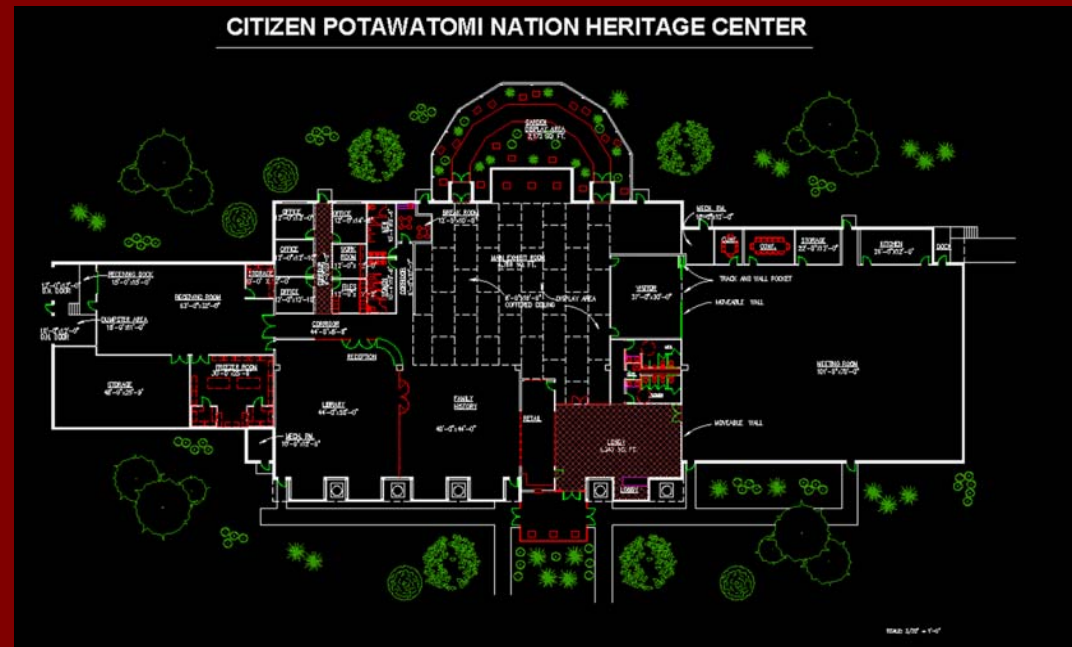
The CPN & Geo-Thermal Energy




**The CPN uses
geo-thermal energy in its
health care clinic.**

The CPN & Geo-Thermal Energy

The CPN's Heritage Center, now on the drawing board, will feature use of geo-thermal energy.



Objective Four



The Citizen Potawatomi Nation will address electricity restructuring by increasing our participation beyond continuing to purchase electricity from the local distribution utility. Determining the opportunities and pitfalls of electricity restructuring will prepare the CPN to protect and serve tribal interests.