

Sac and Fox Tribe of the Mississippi in Iowa

Meskwaki Nation

Meskwaki Planning Department
Looking to a Bright Future

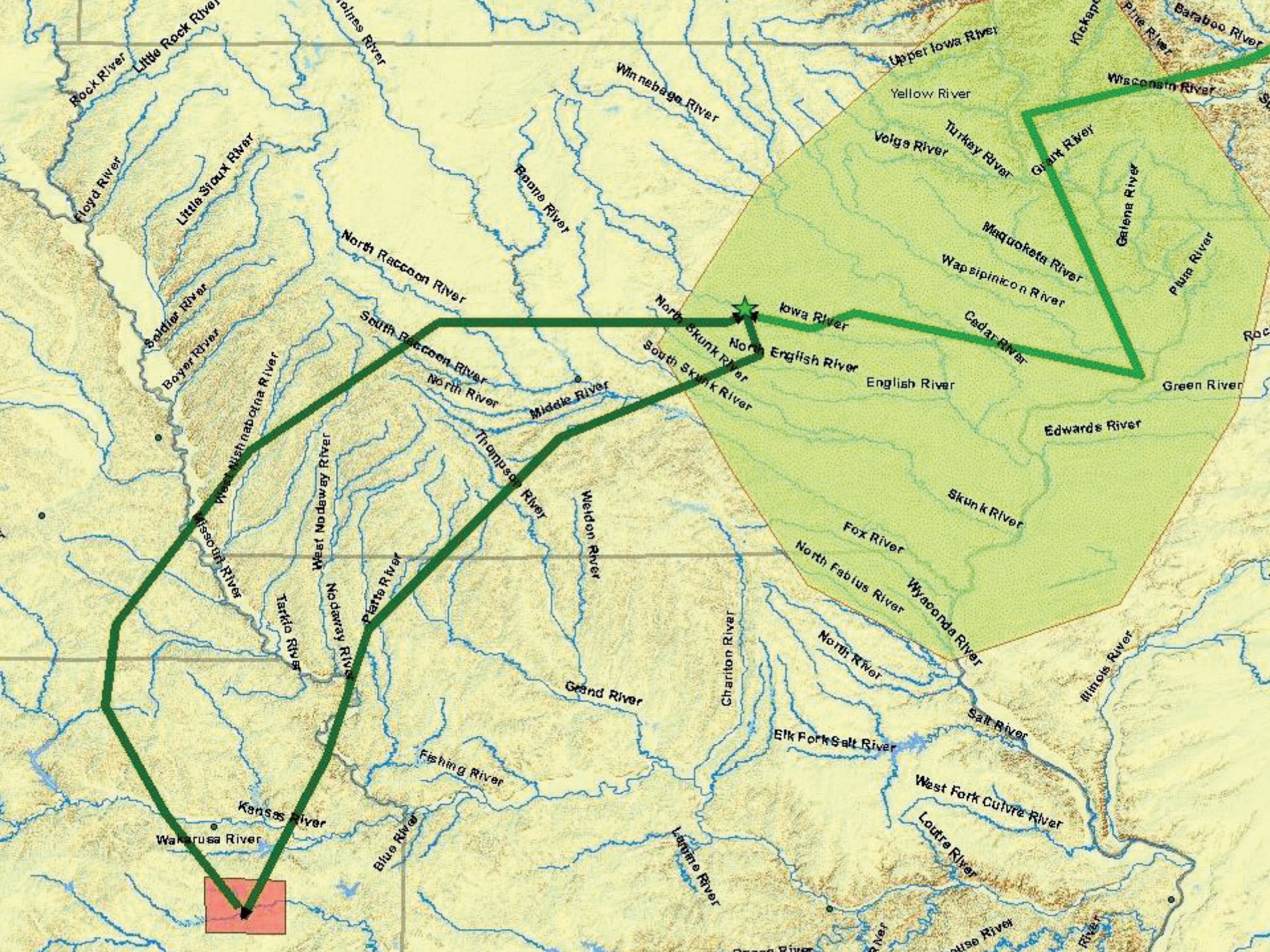


Meskwaki Nation

Department of Energy
Tribal Energy Program Review 2009
Denver, Colorado

Wind Energy Resource Assessment on Tribal Land
Presented by: Thomas Gearing
November 19, 2009

Project Participants:
Technical POC: Thomas M. Gearing
Business POC: Lucas Smith (Grants/Contracts Officer)



Meskwaki Menu

Meskwaki Nation Special Notices

Click the green outlined boxes for more information.



Meskwaki Annual Powwow

Meskwaki Nation Times Current Issue

Tribal Center Events - Weeks: 1 2 3 4 5



Wind Energy Project and RFP info



Sac & Fox Tribe

Hello Friend, we are pleased to welcome you to the official website of the Sac and Fox Tribe of the Mississippi in Iowa/Meskwaki. Our Tribe is governed by a seven member Tribal Council entrusted with the welfare of over 1,300 members. Our Settlement Lands include 7,000+ acres in two counties. Through self-determination we have made positive impacts for the people with accomplishments that include the Tribal Court, established in 2005 and Tribal Law Enforcement, established in 2006. Currently, we are undergoing revisions to our Tribe's Constitution, which was originally created in 1934 as a part of the Indian Reorganization Act. Thanks to our Tribe's gaming facility, we are able to continually improve and increase on our people's quality of life.

Tribal Operations

The Only All-Indian Four-Day Cultural Festival In The State Of Iowa!

2009 95th Annual Meskwaki Indian Powwow August 6-7-8-9

HELD ON THE
MESKWAKI INDIAN SETTLEMENT
NEAR TAMA, IOWA

- UNIQUE CEREMONIAL DANCES • AUTHENTIC ARTS & CRAFTS
 - HISTORICAL PRESERVATION EXHIBITS • COLORFUL NATIVE REGALIA
 - ARTISAN DEMONSTRATIONS • MESKWAKI VILLAGE REPLICA
 - FOOD VENDORS • FIELD DAY EVENTS & CONTESTS
- PUBLIC WELCOME!

FOR INFORMATION CONTACT:
MESKWAKI ANNUAL POWWOW ASSOCIATION, PH. 641-454-4678 OR VISIT: WWW.MESKWAKI.ORG





Renewable Energy?

- How to become involved
- Places to go
- Contacts to make
- Many free seminars
- Low-cost Expositions (\$10 – cheap!)
- Objectives – affordable, clean energy
- Make a plan – wind resource assessment
- Apply for a grant



Smart Choice. Clean Future. Better Iowa

DNR
of Natural Resources
dnr.iowa.gov

community

THE UNIVERSITY
OF IOWA
NATURAL RESOURCES

I-Renew Mainstreet
Registration
Information
Exhibitors
Food & Water
Workshops
4, 5, 6

CAR
POOL
PARKING
ONLY



THANK YOU



www.bagandtag.com/xstream



TAKING RECYCLING TO THE NEXT LEVEL

Please call the Iowa City Landfill & Recycling Center at 319-887-4169 to borrow this recycling bin for your public event!

TAKING RECYCLING TO THE



www.bagandtag.com/xstream



THANK YOU



PLASTIC BOTTLES AND ALUMINUM CANS ONLY





Iowa Energy Center - Energy Funding, Efficiency and Renewables - Windows Internet Explorer

http://www.energy.iastate.edu/Renewable/wind/assessment/calculate.aspx?county=Tama



File Edit View Favorites Tools Help

ArcGIS Explorer - ArcGIS Ex... Geospatial and Mapping Ad... Tribal Energy and Environ... Suggested Sites Free Hotmail Get More Add-ons

Iowa Energy Center - Energy Funding, Efficiency and ...

AVG Search Total Protection AVG Info Get More Identity Guard

Wind Calculator | Solar Calculator | Contact

Iowa Energy Center BECON ERS NBCIP DDC AERLP

About the Iowa Energy Center | Energy Grants & Funding | Renewable Energy | Energy Efficiency | News & Events

Wind Assessment and Calculator

Biomass **Wind Turbine Output Calculator** [Print Version](#)

Wind
 Solar
 Hydro
 Related
 Incentives
 Renewable Energy

Currently Viewing Cities For Tama County [Switch To a Different County](#)

Select Town: Mesquakie Indian Settlement

Select Period: All
(hold down Shift, Ctrl, or Command to Select Multiple)
 Annual
 January
 February

Use best in 8 km: (Annual Only) Yes: No:

Select Turbine Size: All

Select Turbine Type: AAER Wind Energy A-1500, 70m; 1500 kW

Select Units of Measurement: Metric: English:

Enter Tower Height: 165
(meters/feet):
 (Enter in meters if "Metric" was selected.
 Enter in feet if "English" was selected)

Enter Number of Turbines: 1

Enter Loss Factor (%): 12

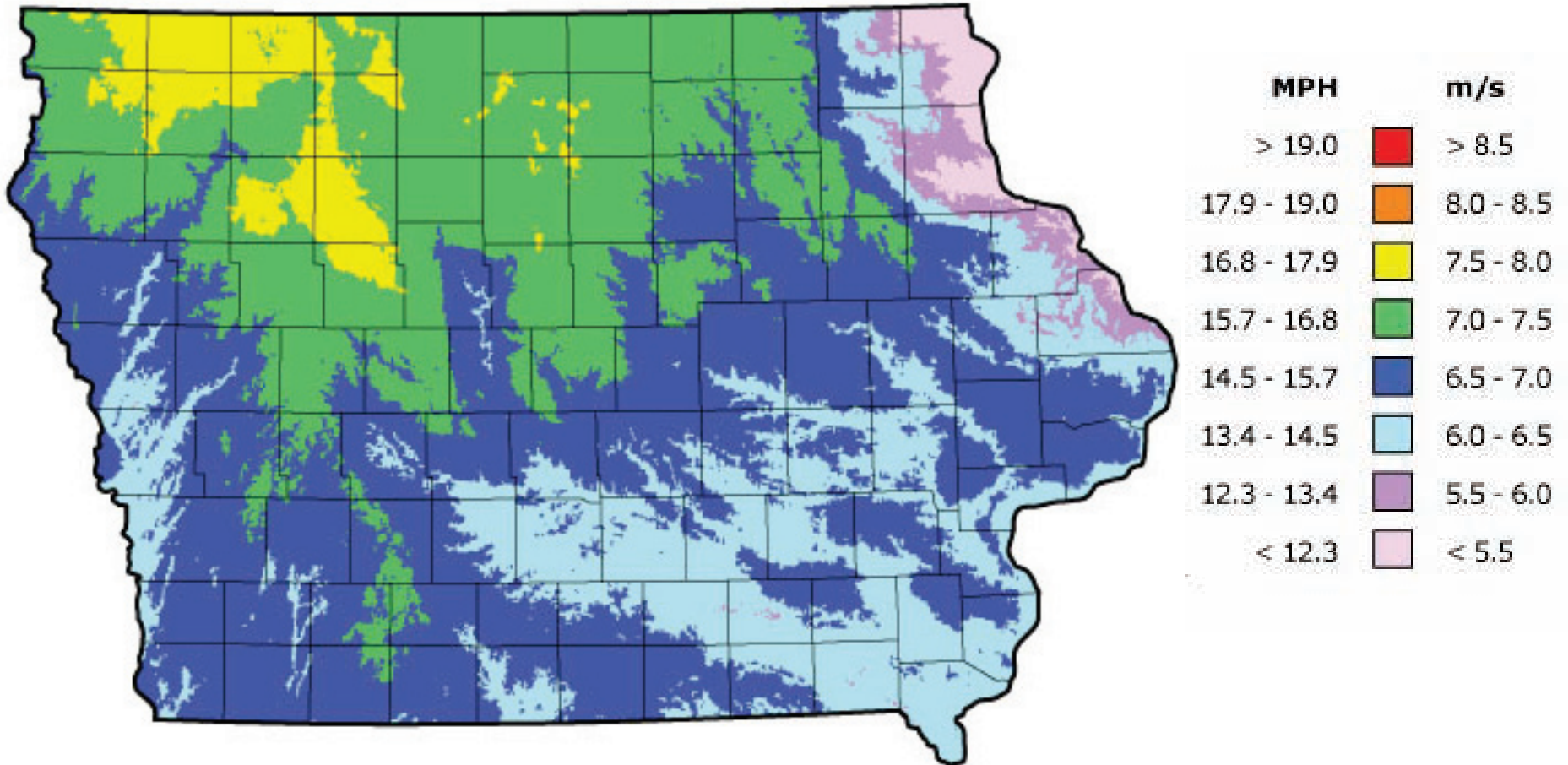
Display Frequency Distributions: No

Calculate

About the Iowa Energy Center | Energy Grants & Funding | Renewable Energy | Energy Efficiency | News & Events

Copyright 2006 - 2009 Iowa Energy Center. All Rights Reserved.

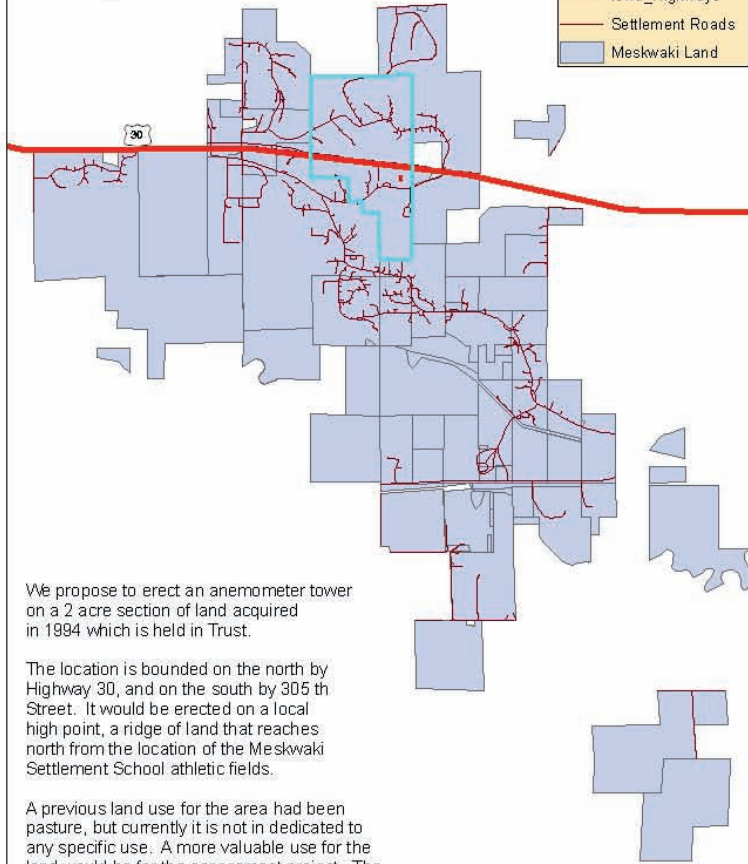
Locate free resources – Wind Maps



Project location

Meskwaki Settlement - Land Proposed For Wind Assessment

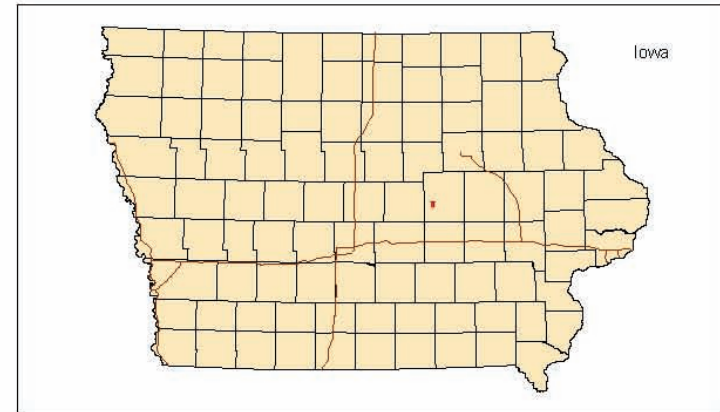
Wind Assessment - Project Location



We propose to erect an anemometer tower on a 2 acre section of land acquired in 1894 which is held in Trust.

The location is bounded on the north by Highway 30, and on the south by 305 th Street. It would be erected on a local high point, a ridge of land that reaches north from the location of the Meskwaki Settlement School athletic fields.

A previous land use for the area had been pasture, but currently it is not in dedicated to any specific use. A more valuable use for the land would be for the assessment project. The Tribal Realty Officer has stated that there are no current plans to use the parcel for any other purpose.



Great Plains Wind Energy Summit

Rapid City, SD



Federal Laws & Policies Applicable to Windpower

- Native American Policy of USFWS
- Secretarial Order 3206
- Endangered Species Act
- Migratory Bird Treaty Act
- Bald and Golden Eagle Protection Act
- National Wildlife Refuge System Improvement Act
- National Environmental Policy Act
- Clean Water Act





Electrical Engineer at Dept of Interior?





Tribal Energy Program

[About the Program](#)
[Information Resources](#)
[Financial Opportunities](#)
[Deployment](#)
[Home](#)

About the Program

Organization

 [Printable Version](#)

Program Implementation

This section provides background information about the Tribal Energy Program. Learn what the program does, how it is organized, and how program activities are implemented. This section also includes contact information for Tribal Energy Program staff.

Contacts

The Tribal Energy Program, under the Department of Energy's (DOE's) Office of Energy Efficiency and Renewable Energy, promotes tribal energy sufficiency, economic development, and employment through the use of renewable energy and energy efficiency technologies.

The program provides financial and technical assistance to tribes for the evaluation and development of renewable energy resources on tribal lands. As building knowledge and skills is essential to developing, implementing and sustaining energy efficiency and renewable energy projects, the program also offers education and training opportunities.

Join our e-mail list to receive information about the program, funding opportunities, workshops and training, and other tribal-energy-related information. To join, send your contact information to [Lizana Pierce](#).

Mission

Offering financial and technical assistance to tribes through *government-to-government* partnerships that:

1. Empower tribal leaders to make informed decisions about energy choices
2. Bring renewable energy and energy efficiency options to Indian Country
3. Enhance human capacity through education and training
4. Improve local tribal economies and the environment
5. Make a difference in the quality of life of Native Americans.

SAC & FOX TRIBE OF THE MISSISSIPPI IN IOWA
MESKWAKI RENEWAL ENERGY ASSESSMENT NARRATIVE
MESKWAKI SETTLEMENT, TAMA, IA 52339



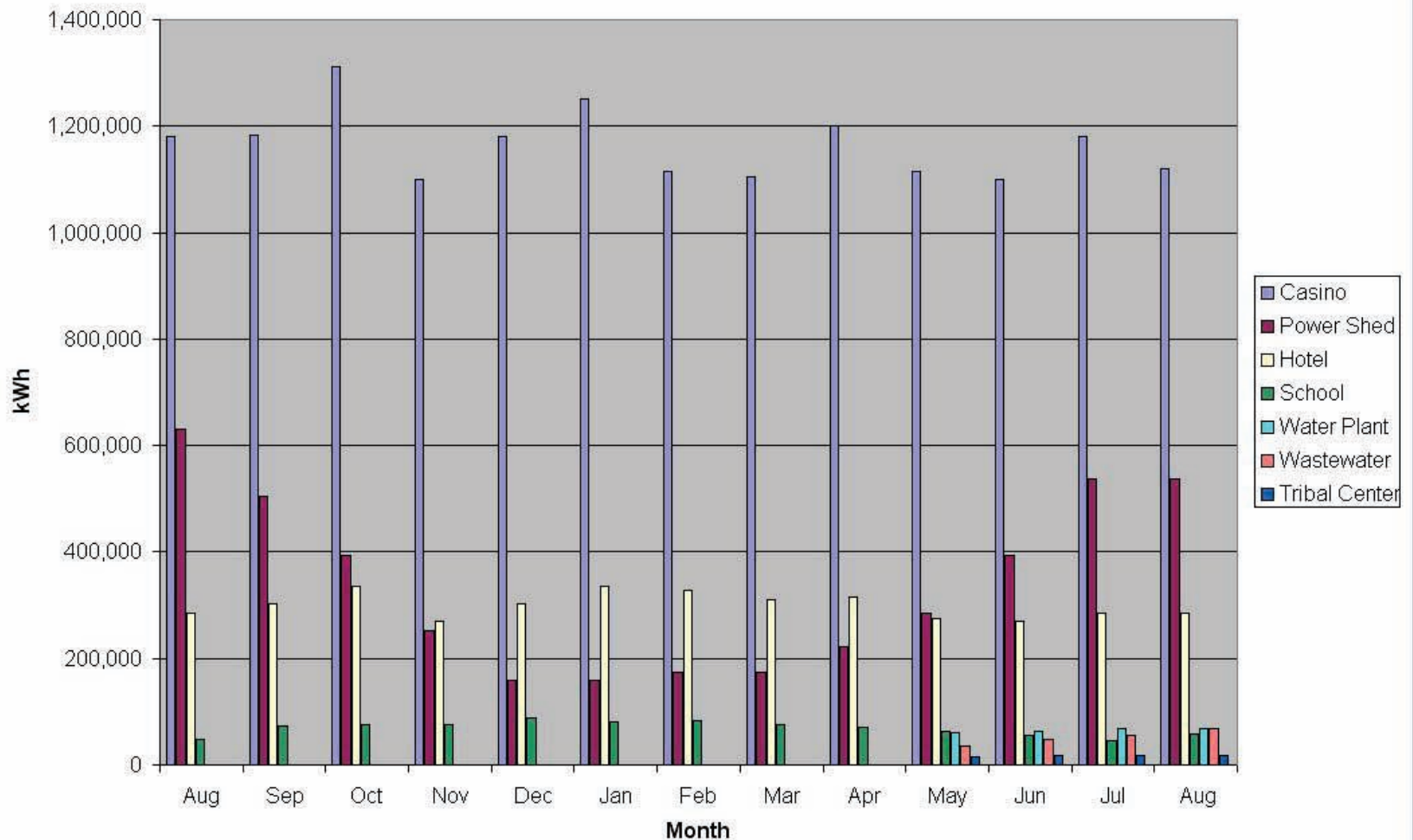
**Assessing the Feasibility of Renewable Energy Development and Energy Efficiency
Deployment on Tribal Lands**
Funding Opportunity Number: DE-PS36-09G099024
Topic Area: Renewable Energy Feasibility Studies

Contact Information:

Technical POC
Thomas Gearing (Technical Principal Investigator)
349 Meskwaki Road
Tama, IA 52339

Assess Energy Needs

Meskwaki Settlement: Kilowatt Hours Used, 2007 - 2008



Meskwaki Nation – Sac & Fox Tribe of the Mississippi in Iowa

Request for Qualifications & Request for Proposals

Wind Resource Assessment

1. Introduction

1.1 Document Purpose

This document is an outline defining the needs of the Meskwaki Nation's initiative in assessing the wind energy resource on Tribal Land with no reference to any specific vendor. The Meskwaki Nation is submitting this Request for Qualifications (RFQ) and Request for Proposal (RFP) to vendors/consultants. The responses to these requests will be used to select one or more candidate vendors for further evaluation.

1.2 Document Audience

The audience includes Tribal Council, Meskwaki Settlement School, Executive Management, Information Technology, Finance, and all identified stakeholders of the Meskwaki Nation as well as selected vendors.

2. Scope and Objectives

2.1 Scope of Work

The scope of work to be performed under this proposal shall include the securing of one anemometer tower with complete instrumentation at 3 levels and data logging and transmission. Contractor will provide for delivery of all equipment to the Tribe's address in Tama, Iowa. Upon arrival of all necessary equipment, contractor will perform assembly and commissioning of the anemometer tower and data transmission equipment. During the one-year term of data collection, contractor shall provide for the receipt and storage of data at the contractor's location. At year's end, the contractor shall provide a meteorological analysis of the year's data, producing a set of standard meteorological reports suitable for input to technical analysis for specific wind turbine models (technical analysis not to be provided under this proposal.).

Please provide the methodology of your project implementation: How quickly can you deliver and install your product? What are the industry ratings of the components you have chosen? If you are aware of similar options for a particular subsystem, you may present both options with your assessment of the relative cost versus quality tradeoffs. Do you have resource maps and/or models that could suggest a more optimal placement of the tower? What type of software is used to track and process the collected information? Are intermediate results readily available if requested?

Meskwaki Menu

Meskwaki Nation Special Notices

Public - Request for Proposals



Wind Energy Project - Department of Energy

We have just received good news that the Department of Energy has awarded us a grant to study our wind resource on the Meskwaki Settlement. The amount approved will fund complete studies of all aspects:

- 1). Technical characteristics of the wind, by installing a meteorological tower
- 2). Environmental aspects, to protect any plants, animals, birds, etc
- 3). Cultural and archaeological concerns;
- 4). Geological aspects, as regards suitability for building the future wind turbine tower
- 5). Educational benefits - how we can use our project to benefit our school programs

This is a complex project, but with the accumulated knowledge and experience available here, we can put it together. The end result will be everything we need to completely qualify for building our first wind turbine to bring clean, renewable, affordable electric power to the Meskwaki Settlement.

Next Steps

1. Distribute RFP to interested vendors
2. Post RFP for interested vendors
3. Review RFP received from vendors



For more information contact Tom Gearing at 641-484-4678 ext 2246



If you are an interested vendor and would like to review the [RFP](#), [click here](#).

Post your RFP wherever you can!

RE: Sac and Fox Tribe RFP for wind resource assessment program

Heffernan, Patrick J (RBI-US) [patrick.heffernan@reedbusiness.com]

You replied on 9/21/2009 9:52 AM.

To: Tom Gearing

Tom, please be advised that we have two paths for sending information to our subscribers: the weekly printed bulletins and the website. While we can attach the documents you sent to the project listing on the website, space limitations prevent us from doing the same in the printed bulletins. Most of our subscribers are Web-savvy by now but there are a few holdouts, so you may get a call or two asking you to send them the documents. Just wanted to give you a heads-up. Good luck!

From: Tom Gearing [mailto:gis.it@meskwaki.org]

Sent: Wednesday, August 26, 2009 1:53 PM

To: Heffernan, Patrick J (RBI-US)

Subject: Sac and Fox Tribe RFP for wind resource assessment program

Hi Pat,

We have finished the RFP. It comes with a confidentiality statement and a locator map as well, so 3 attachments. Let me know what I need to do next.

Thanks,

Tom Gearing
Principal Investigator, Wind Resource Assessment Project
Sac and Fox Tribe of the Mississippi in Iowa (Meskwaki Nation)
349 Meskwaki Rd
Tama, IA 52339
641-484-4678

http://www.nawindpower.com/e107_plugins/content/content.php?cat.611

File Edit View Favorites Tools Help

Favorites | ArcGIS Explorer - ArcGIS Ex... | Geospatial and Mapping Ad... | Tribal Energy and Environm... | Suggested Sites | Free Hotmail

AVG Search Total Protection AVG Info Get More



"Covering the world's *fastest growing* energy source in the world's *most promising* geographic market."

Subscribe Advertise Editorial Se

- Home
- Wind Jobs
- Forums
- Buyer's Guide
 - Browse/Search
- News Departments
 - New & Noteworthy
 - Projects & Contracts
 - Policy Watch
 - Products & Tech.
 - FYI
 - People
 - RFP
 - Search

Content Category: RFP

Avista Issues RFP

on 28 Sep 2009 by NAW Staff

Avista, a Spokane, Wash.-based utility, has issued a request for proposals (RFP) based on resource acquisition goals identified in its 2009 Electric Integrated Resource Plan [read more]

Meskwaki Nation RFQ, RFP

on 09 Sep 2009 by NAW Staff

The Meskwaki Nation of Iowa has issued a request for qualifications (RFQ) and request for proposals (RFP) to vendors/consultants for wind resource assessment. The [read more]

Division Of Capital Asset Management Issues RFP For Correctional Institution Wind Project

on 01 Sep 2009 by NAW Staff

Working in collaboration with the Department of Energy Resources, the Division of Capital Asset Management (DCAM) has issued requests for proposals (RFPs) to install two [read more]

Help is available!

Division of Energy & Mineral Development

About Our Company

The Division of Energy and Mineral Development (DEMD), in the Assistant Secretary ? Indian Affairs office assists Tribes in the exploration and development of Tribal energy (both renewable and non-renewable) and mineral resources. This activity includes the collection of exploratory and identification data on such resources, the funding and carrying out of feasibility studies, market analyses and other resource development initiatives.

Product Category:

- [Other](#)

Contact Information

Winter Jojola-Talbert

Division of Energy & Mineral Development
12136 W. Bayaud Ave, Suite 300
Lakewood, CO 80228
United States

Phone Number

(303) 969-5270

Microsoft Excel - MailingList.xls

File Edit View Insert Format Tools Data Window Help

Go to Office Live Open Save

Arial 10 B I U \$ %

	A	B	C	D	E	F
1	Company Name	Address 1	City	State	Zip	Phone
2	AAT inc.	3 rue des Cerisiers	Gaspe, Quebec, Canada		G4X 2M1	877-360-1228
3	ABS Consulting, Inc	4 Research Place, Suite 200A	Rockville	MD	20850	301-990-7181x204
4	Acterra Group					800-289-7371
5	Advanced Development Services	21700 Oxnard St, Suite 1840	Woodland Hills	CA	91367	800-590-8839
6	Anemometry Specialists	102 Main St	Alta	IA	51002	866-224-1631
7	Applied Science Associates, Inc	55 Village Square Dr	South Kingston	RI	2879	401-789-6224
8	APRS World					
9	AWS Truuwind	463 New Karner Rd	Albany	NY	122050	518-213-0044
10	CPP Wind	1415 Blue Spruce Dr	Fort Collins	CO	80524	970-221-3371
11	Denali Energy, Sovereign Wind	13954 Cypress Dr	Baxter	MN	56425	877-557-1031
12	EAPC	222 3rd St NW	Bemidji	MN	56601	218-751-0151
13	Energy & Environmental Research Center	15 North 23rd St, Stop 9018	Grand Forks	ND	58203	701-777-5000
14	FreedomWorks, LLC	525 Wren Lane	Harper's Ferry	WV	25425	202-369-6324
15	GPCo USA Inc	866 S Diestel Rd	Salt Lake City	UT	84105	801-649-3672
16	Jerry Henscheid	1018 6th St	Harlan	IA	51537	
17	Juhl Wind, Inc	996 190th Ave	Woodstock	MN	56186	877-584-5946
18	KB Energy, LLC	1704 State Hwy 13	Arlington	WY	82083	307-378-3480
19	Mariah Resources, Inc	310 N Cluff Ave, Bldg C	Lodi	CA	95241	800-619-0845
20	Meteorological Solutions Inc	2257 S 1100th E, Suite 203	Salt Lake City	UT	84106	801-474-3826
21	National Wind Assessments	3033 Excelsior Blvd, Suite 525	Minneapolis	MN	55416	612-746-6608
22	Native Green	286 State Road 65	River Falls	WI	54022	
23	Pioneer WindWorks	222 N Elm St	LaFarge	WI	54639	608-333-7041
24	Seventh Generation Energy Systems	100 S Baldwin St, Suite 304	Madison	WI	53703	877-229-9201
25	V-Bar, LLC attn Richard Simon	400 E Capitol Park Ave, Suite 404	Salt Lake City	UT	84103	
26	Wind Utility Consulting, PC	412 S Locust St	Jefferson	IA	50129	515-386-3405
27	3Tier	2001 Sixth Ave, Suite 2100	Seattle	WA	98121	206-325-1573
28	Wagoner Wind, LLC	3205 Poppleton Ave, Suite 12	Omaha	NE	68105	402-680-1110
29	WINData, Inc	104 2nd St S, Suite 202	Great Falls	MT	59401	406-727-1014
30	WindLogics, Inc	1021 Bandana Blvd E, Suite 111	St Paul	MN	55108	651-556-4200
31	Wind Prospect	4550 Cherry Creek S Dr, Suite 913	Denver	CO	80246	720-542-9922
32	Wind Rivers, LLC	1050 West Riverview Dr	Idaho Falls	ID	83401	208-529-9463

RFP Results

- 15 companies bid on our wind resource assessment project.
- 12 of the bids were fully qualified and within our budget expectations
- The 3 best of the companies have been selected for a chance to present their proposals in person



- [Home](#)
- [About Us](#)
- [Our Services](#)
- [Products](#)
- [Photo Gallery](#)
- [Contact Us](#)

Wind Energy Site Assessment

Anemometry Specialists wind energy site assessment services can help save you money. The selection of a wind turbine site is crucial to the profitability of your wind project. The availability of wind, transmission lines, value of energy to be produced, cost of land acquisition, land use considerations, and environmental impact of construction and operations can have a major impact on your potential profits.

Securing the right site and fully exploiting its wind resource is critical to the long-term profitability of your project. If you secure an excellent site with sufficient grid capacity and fully exploit its wind resource, you will guarantee that your business will profit from the power you generate.

Typical site location services include:

- Site Visits
- Evaluation of Topography
- Proximity to Power Lines
- Transmission Grid Studies
- Land Use and Ownership
- Compilation of Existing Wind Data
- Environmental Studies and Restrictions
- Permitting Requirements

Our Services

Anemometry Specialists is a full service wind energy assessment company. Use the links below to find out more about our services and expertise.

- [Wind Assessment](#)
- [Wind Energy Site Assessment](#)
- [Met Tower Installation](#)
- [Sodar Installation](#)
- [Wind Data Collection](#)
- [Wind Data Analysis](#)
- [Project Management & Consulting](#)
- [Tower Climb Installation](#)
- [Maintenance & Repair](#)



Wind Power 2009

We would like to thank everyone that visited our booth during the WindPower 2009 Conference in Chicago. More than 23,000 people attended the show which



HOME

ABOUT US

OUR SERVICES

Residential Energy
Wind for Farm + Business
Wind Farm Development
Wind Resource Monitoring
Site Assessments
Feasibility Studies
Tribal Initiatives

EDUCATION

PUBLIC POLICY

RESOURCES

CONTACT US

SITE ASSESSMENTS .

A renewable energy site assessment is the best and lowest risk option to find out if renewable energy is right for you. A certified wind or solar site assessor will meet with you at your home or business to discuss your objectives, evaluate your resource and identify several system options that would be best for your site. Within a few weeks, you'll receive a written report outlining:

- **Current energy use and costs**
- **Wind or solar resource potential**
- **System design goals**
- **Wind and/or solar system options including performance and cost estimates**
- **Installation barriers**
- **Siting, zoning and permitting issues**
- **Utility interconnection issues**
- **Next steps**

A Seventh Generation Energy site assessment will provide you with a comprehensive road map from which to evaluate the opportunities and challenges of a wind system at your site. Most importantly, we will quickly identify any fatal flaws that would stand in the way of your goals.

Engineering for the Future

WHO WE ARE

WHAT WE DO

Overview

Wireless Communication

Network Solutions

Mobile Data

Asset Tracking

Radio Systems

Video Solutions

Wireless Infrastructure

Specialty Construction

Building Services

■ Energy Infrastructure

Transportation Infrastructure

Electrical Power

Commerical/Industrial

Integrated Building Systems

Energy Infrastructure

As global energy demand rises, resources must be expanded. WPCS supports the development and delivery of energy solutions.

World economies are growing, standards of living are improving and energy supplies are dwindling. It's a scenario that has accelerated the search for new energy sources and better ways of delivery existing supplies. WPCS is contributing in both of these critical areas. WPCS designs and deploys alternative energy solutions in wind and solar power. Through a unique combination of scientific, geologic, engineering and construction expertise, we offer solutions in site design, solar installation, meteorological towers and wind turbine installation. In addition, we support energy companies as they maximize the efficiency of their energy supply infrastructure, by providing a range of services from pipeline trenching to the deployment of wireless solutions.

[contact solutions specialist](#)

Current Status:

- Waiting to hear the words: “The check is in the mail”
- Assembling a Final Assessment Committee to pick the contractor to install our anemometer tower.
- Continuing to search for our “Tribal Champion”

Thank You!

- Questions?