

# Cumberland River System Rehabilitation Program

## SharePoint Site Orientation, Discussion and Training

April 30, 2014

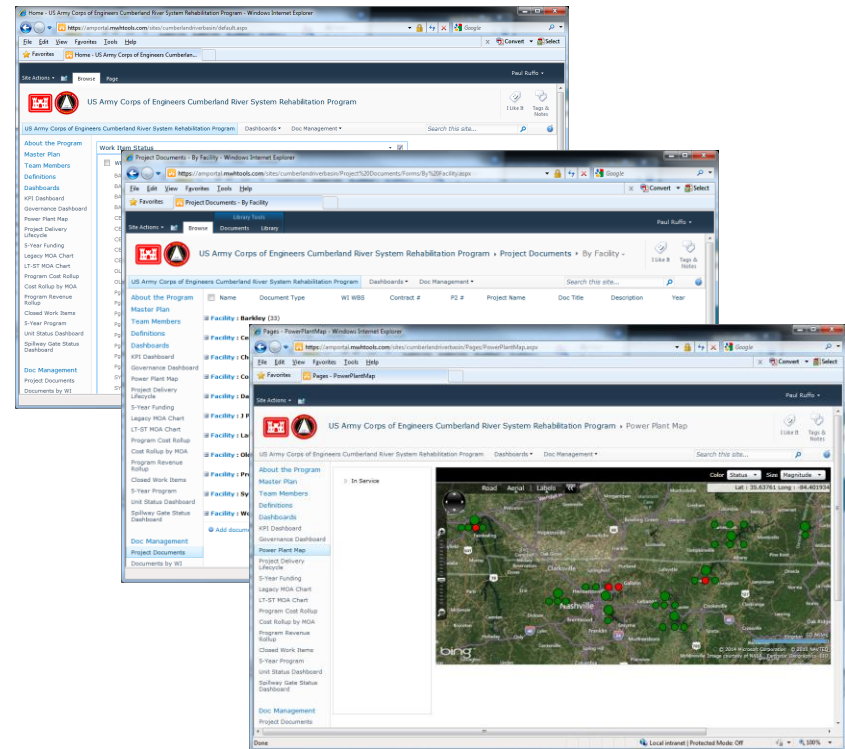


**MWH®**

***BUILDING A BETTER WORLD***

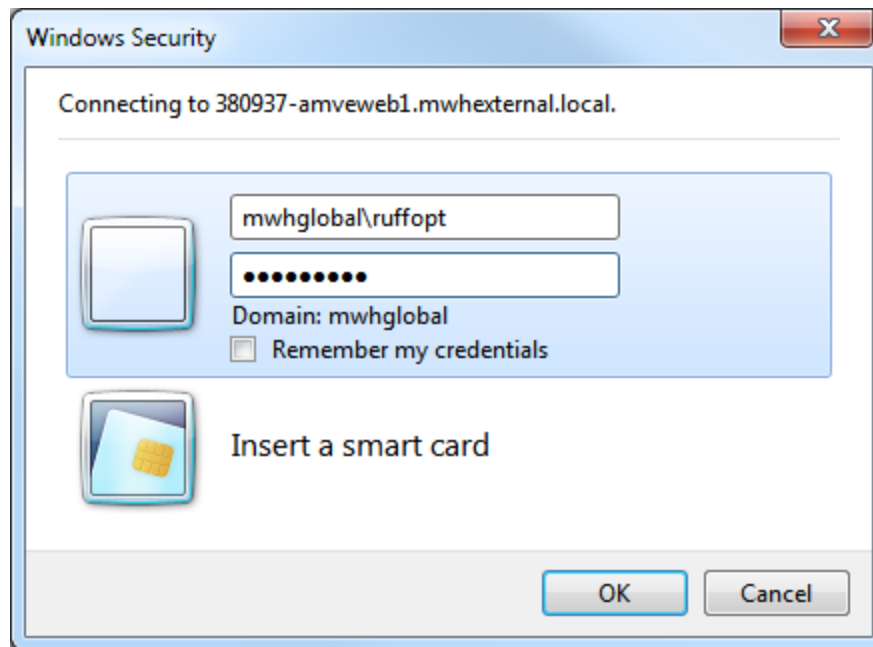
# Agenda

- Introduction
  - Site Overview/Purpose
  - Site History
- Site Login
- Newly Added/Modified
  - Migration to SharePoint 2010
  - Front Page
  - Document Management
  - Dashboards
  - URL
- Discussion



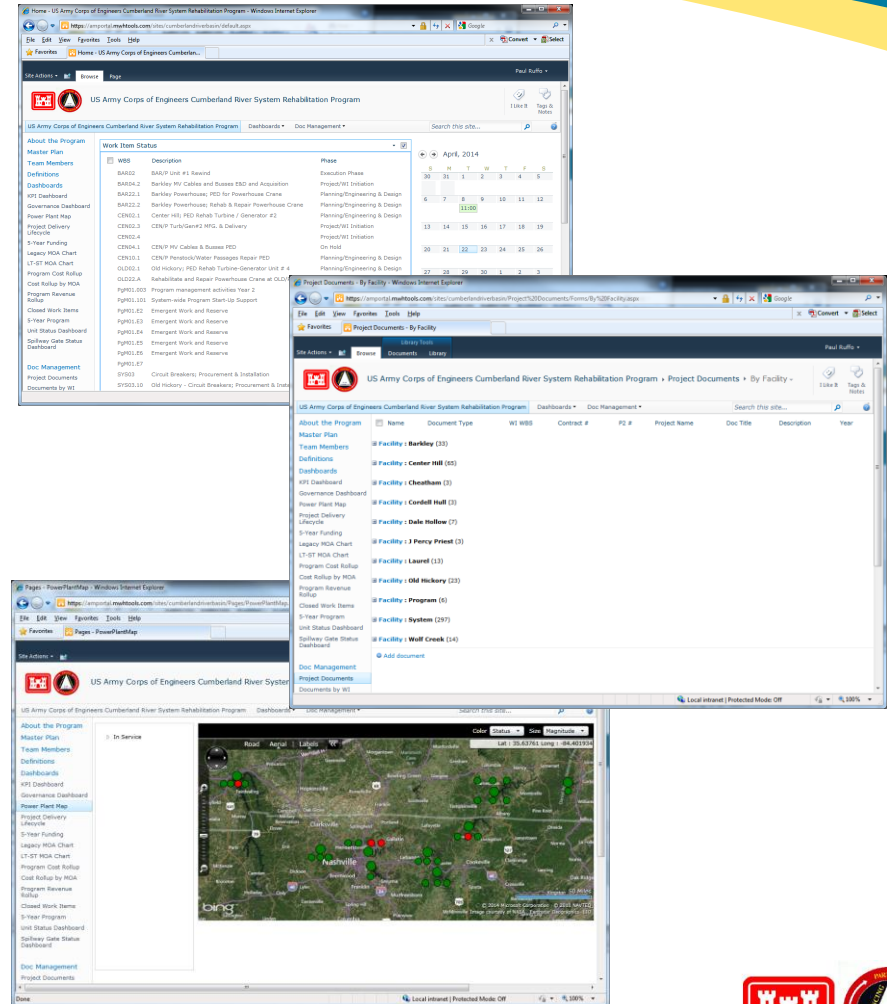
# Site Login

- Make sure to use “mwhglobal\” in front of your User ID
  - Passwords are Case Sensitive



# Newly Added/Modified

- Migration to SharePoint 2010
  - New look to Menus
- Front Page
  - Added Calendar
- Document Management
  - Categorization
  - Automatic Alerts
- Dashboards
  - Map – Unit Status Indicators
- URL



# Training on Live Site

- <https://amportal.mwhtools.com/sites/cumberlandriverbasin/>

The screenshot shows a web browser window displaying the 'US Army Corps of Engineers Cumberland River System Rehabilitation Program' website. The browser's address bar shows the URL: <https://amportal.mwhtools.com/sites/cumberlandriverbasin/default.aspx>. The website has a dark blue header with the Corps of Engineers logo and the program name. Below the header, there is a navigation menu with links like 'About the Program', 'Dashboards', and 'Doc Management'. The main content area is titled 'Work Item Status' and contains a table with columns for 'WBS', 'Description', and 'Phase'. The table lists various work items with their descriptions and current phases. To the right of the table is a calendar for April 2014, showing dates from 30 to 27. Below the calendar are 'Quick Links' to 'Key Performance Indicator (KPI)' and 'Generation Pre-Schedule'. The bottom of the browser window shows the status bar with 'Local intranet | Protected Mode: Off' and a zoom level of 100%.

WBS	Description	Phase
BAR02	BAR/P Unit #1 Rewind	Execution Phase
BAR04.2	Barkley MV Cables and Buses E&D and Acquisition	Project/WI Initiation
BAR22.1	Barkley Powerhouse; PED for Powerhouse Crane	Planning/Engineering & Design
BAR22.2	Barkley Powerhouse; Rehab & Repair Powerhouse Crane	Planning/Engineering & Design
CEN02.1	Center Hill; PED Rehab Turbine / Generator #2	Planning/Engineering & Design
CEN02.3	CEN/P Turb/Gen#2 MFG. & Delivery	Project/WI Initiation
CEN02.4		Project/WI Initiation
CEN04.1	CEN/P MV Cables & Buses PED	On Hold
CEN10.1	CEN/P Penstock/Water Passages Repair PED	Planning/Engineering & Design
OLD02.1	Old Hickory; PED Rehab Turbine-Generator Unit # 4	Planning/Engineering & Design
OLD22.A	Rehabilitate and Repair Powerhouse Crane at OLD/P	Execution Phase
PgM01.003	Program management activities Year 2	Project/WI Initiation
PgM01.101	System-wide Program Start-Up Support	Execution Phase
PgM01.E2	Emergent Work and Reserve	Execution Phase
PgM01.E3	Emergent Work and Reserve	Execution Phase
PgM01.E4	Emergent Work and Reserve	Execution Phase
PgM01.E5	Emergent Work and Reserve	Execution Phase
PgM01.E6	Emergent Work and Reserve	Execution Phase
PgM01.E7		Project/WI Initiation
SYS03	Circuit Breakers; Procurement & Installation	Close-Out Phase
SYS03.10	Old Hickory - Circuit Breakers; Procurement & Installation	Close-Out Phase



Thank You!

